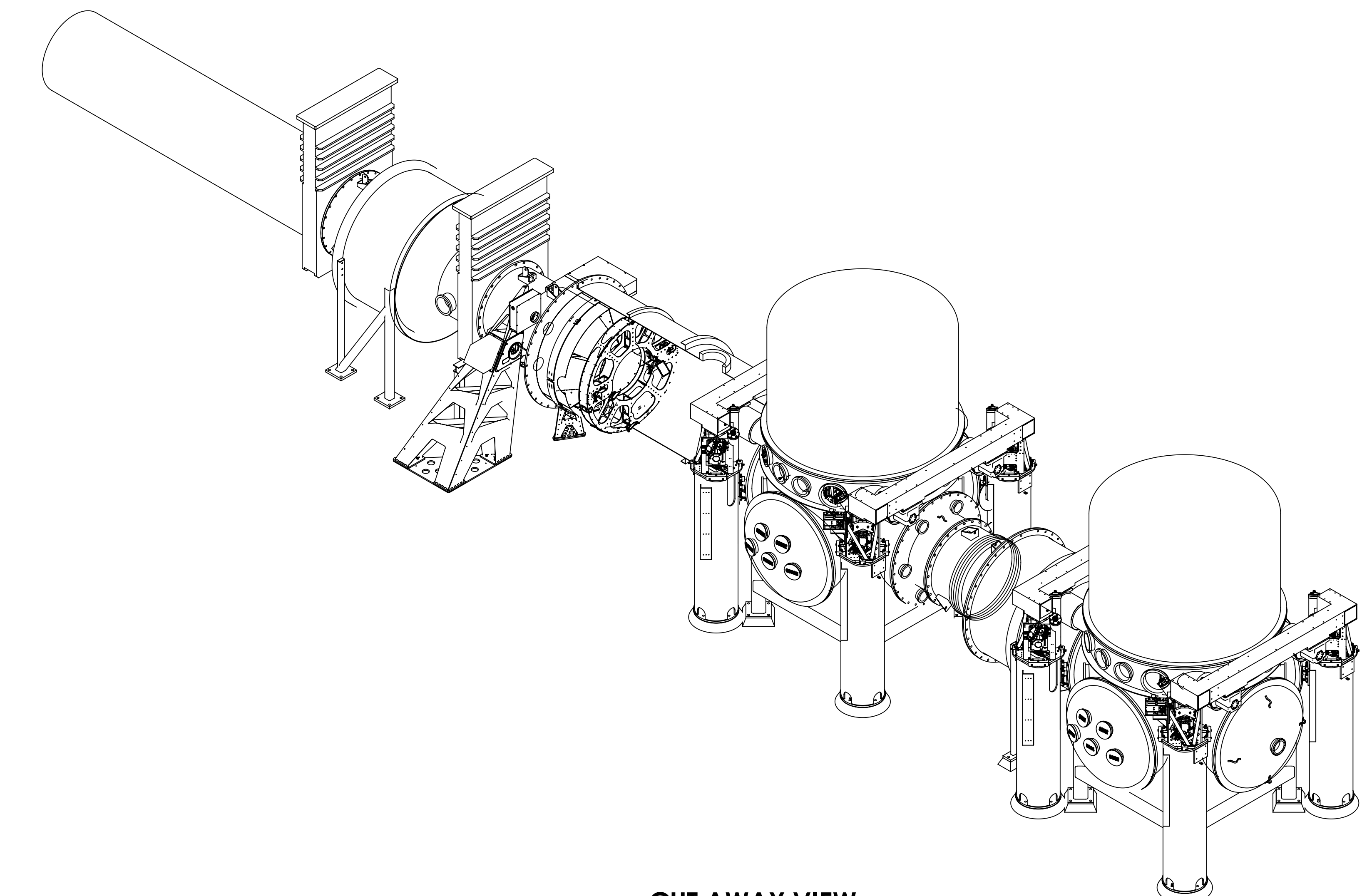
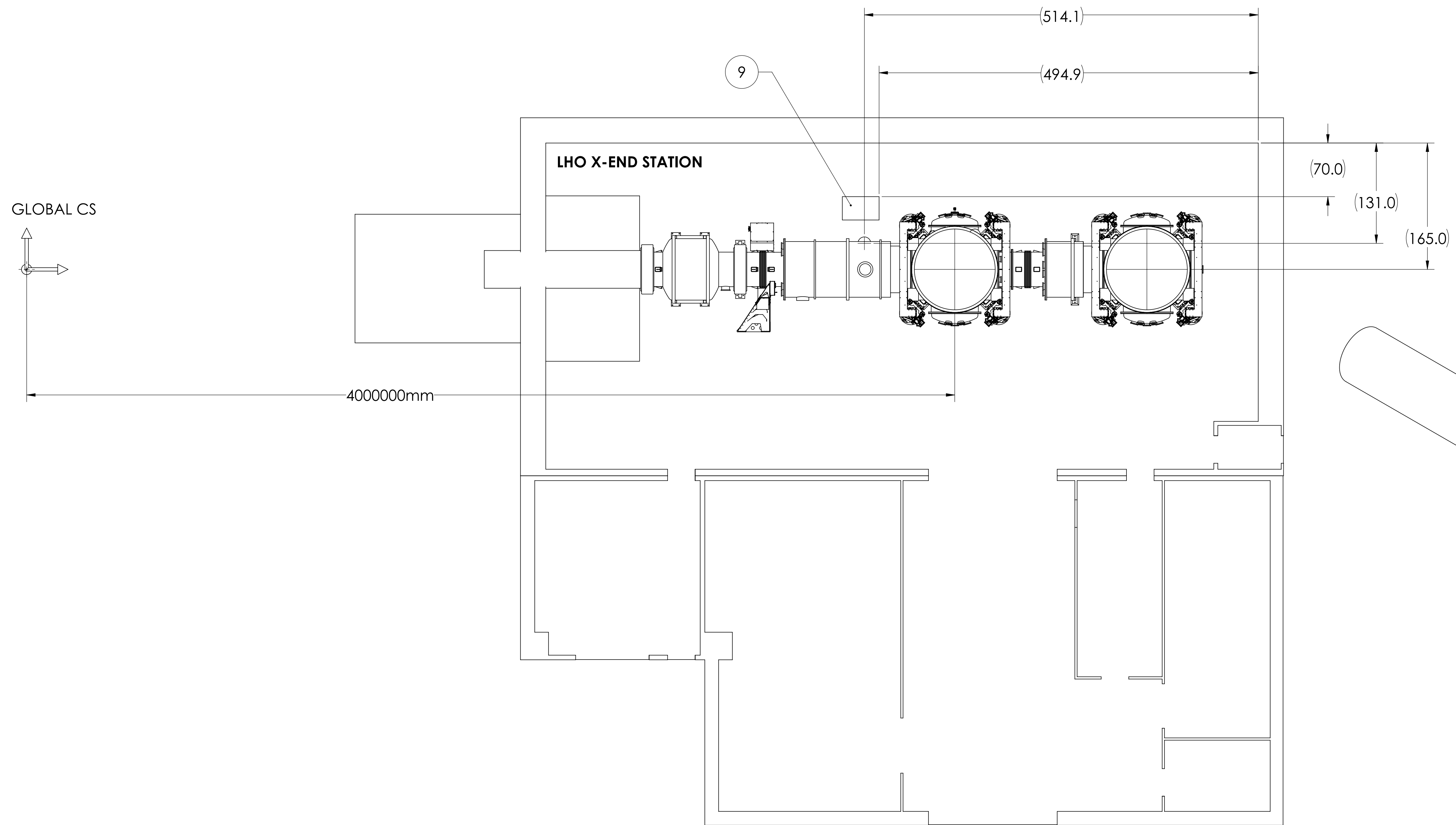
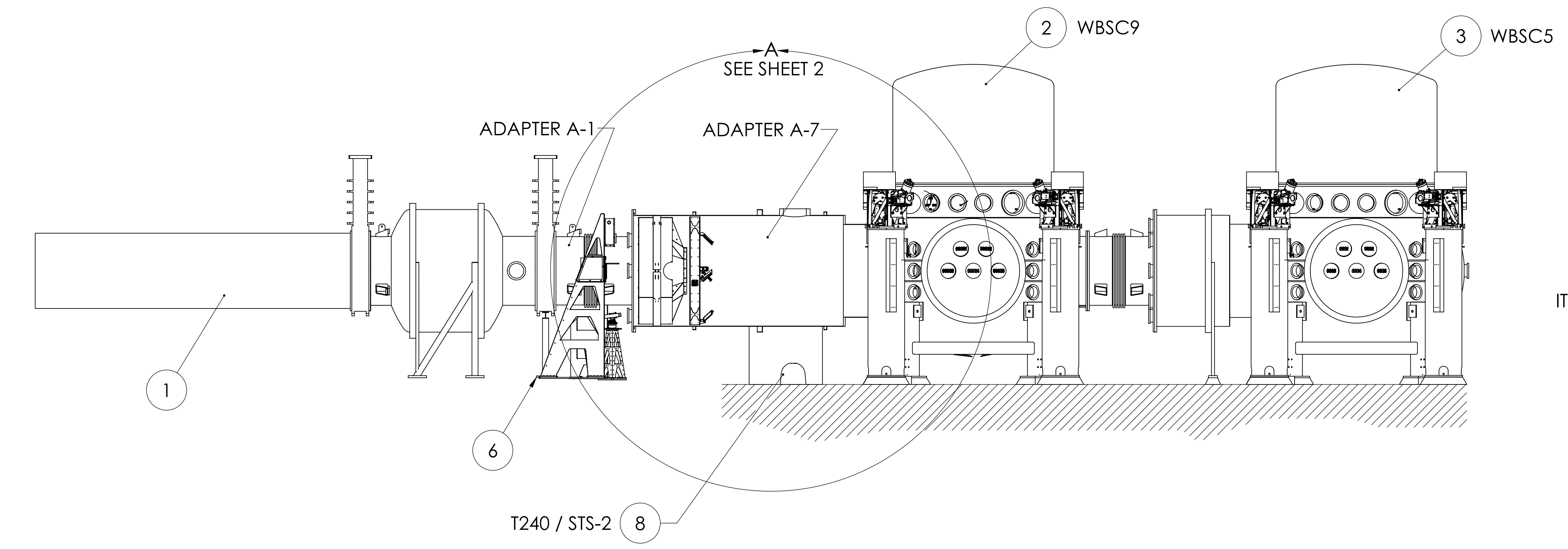


REV.	DATE	DCN #	DRAWING TREE #
v1	25 OCT 2012	-	-
v9	28 JUL 2014	E1400335-x0	-
-	-	-	-



CUT AWAY VIEW



ITEM NO. 8 IS A TEMPORARY REPLACEMENT FOR STS-2  
NOT SHOWN

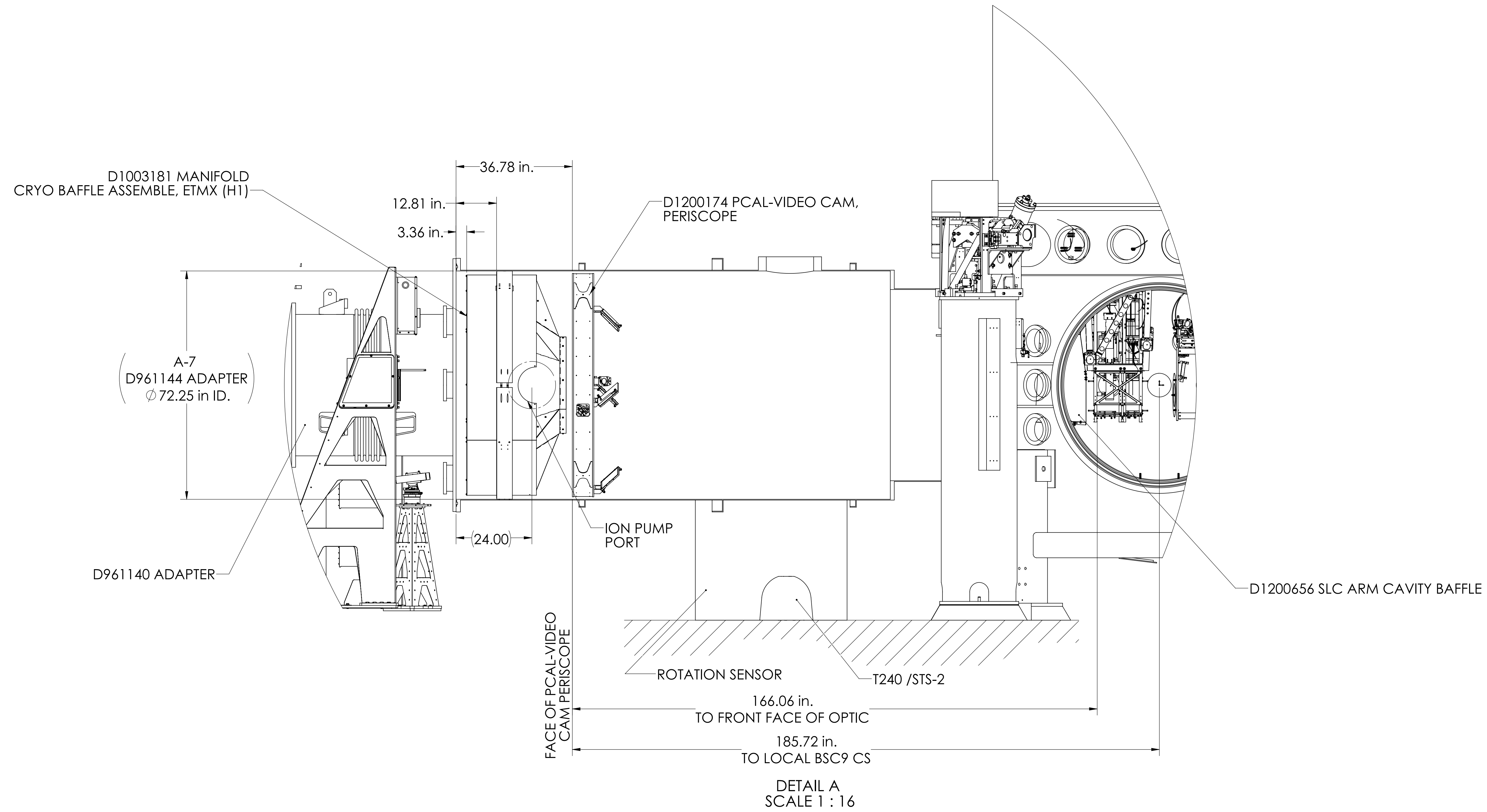
LIST OF SUSPENSION	
LHO - H1	OPTIC(s)
BSC9	ETMX
LHO - H2	OPTIC(s)
BSC5	ETMX
NOTE: H2 WILL NOT BE POPULATED	

- REFER TO LIGO D1201550 FOR aLIGO CARTRIDGE & CLEAN ROOM LAYOUT
- ALL ITEMS SHOWN FOR VISUAL PURPOSES ONLY. PLEASE REFER TO P/N LISTED IN THE BOM FOR DETAILS.
- FOR RACK, CABLE TRAY LAYOUT AND EXTERNAL OPTIC TABLE REFER TO D1100024.

ITEM NO.	PART NUMBER	DESCRIPTION	QTY.
9	D1400179	aLIGO, SEI, UWash ROTATION SENSOR	1
8	TRILLIUM 240 OR EQ.	SEISMOMETER	1
7	G1000719	Floor Occupancy, Oplev & PCAL LHO X-End Station	1
6	D1000323	ALIGO AOS FULLY DETAILED & ENVELOPE FOR OPLEV & PCAL INSTALLATIONS (ETMX-LHO, LLO)	1
5	D1003181	MANIFOLD CRYO BAFFLE ASSY, ETMX H1	1
4	D1200174-02	aLIGO, PCAL-VIDEO CAM, PERISCOPE, X-ARM	1
3	D0900502	aLIGO Systems, WBSC5-H2 Top Level Chamber Assembly	1
2	D0901150	aLIGO Systems, WBSC9-H1 Top Level Chamber Assembly	1
1	D0901866	AdvLIGO, Vacuum Equipment Layout, LHO X-End Station	1

DIMENSIONS ARE IN INCHES		NOTES AND TOLERANCES: (UNLESS OTHERWISE SPECIFIED)		CALIFORNIA INSTITUTE OF TECHNOLOGY MASSACHUSETTS INSTITUTE OF TECHNOLOGY		PART NAME <b>SYSTEM LAYOUT, LHO X-END STATION</b>	
MATERIAL		FINISH		SYSTEM <b>ADVANCED LIGO</b>		DESIGNER K. BUCKLAND	
N/A		N/A μinch		SUB-SYSTEM <b>SYS</b>		SIZE DWG. NO. <b>E D0901468</b>	
		NEXT ASSY		D0901477		APPROVAL 	
				SCALE: NTS		SHEET 1 OF 2	

PCAL & MANIFOLD CRYO BAFFLE INSTALLATION



GENERAL PCAL-VIDEO CAM PERISCOPE & MANIFOLD CRYO BAFFLE INSTALLATION INSTRUCTIONS:

1. REMOVE D961140 A-1 ADAPTER
2. INSTALL D1200174 P-CAL ASSEMBLY INTO D970380 A-7B ADAPTER
3. INSTALL D1003181 MANIFOLD CRYO BAFFLE ASSEMBLY INTO D970380 A-7B ADAPTER

