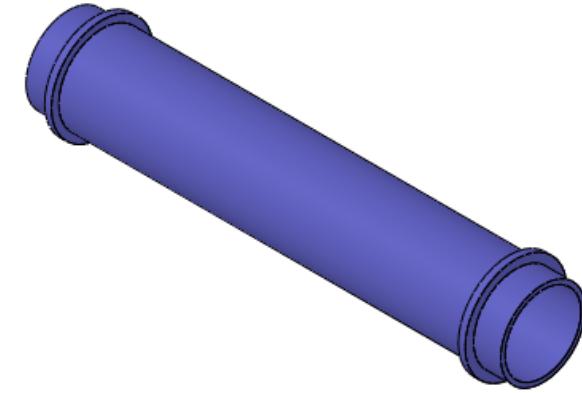
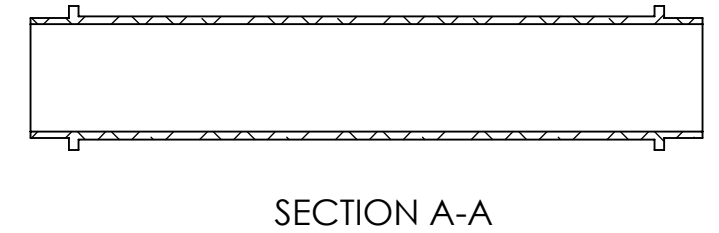
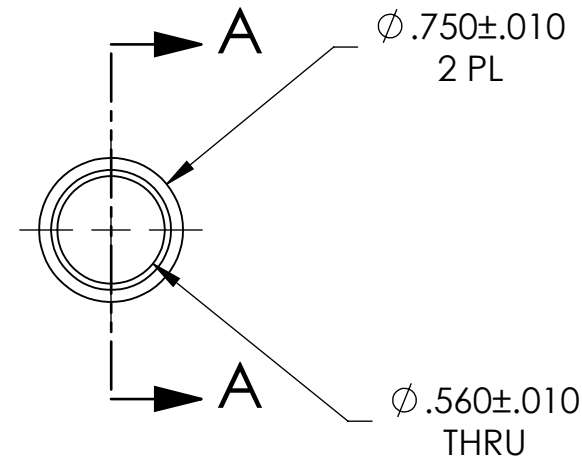
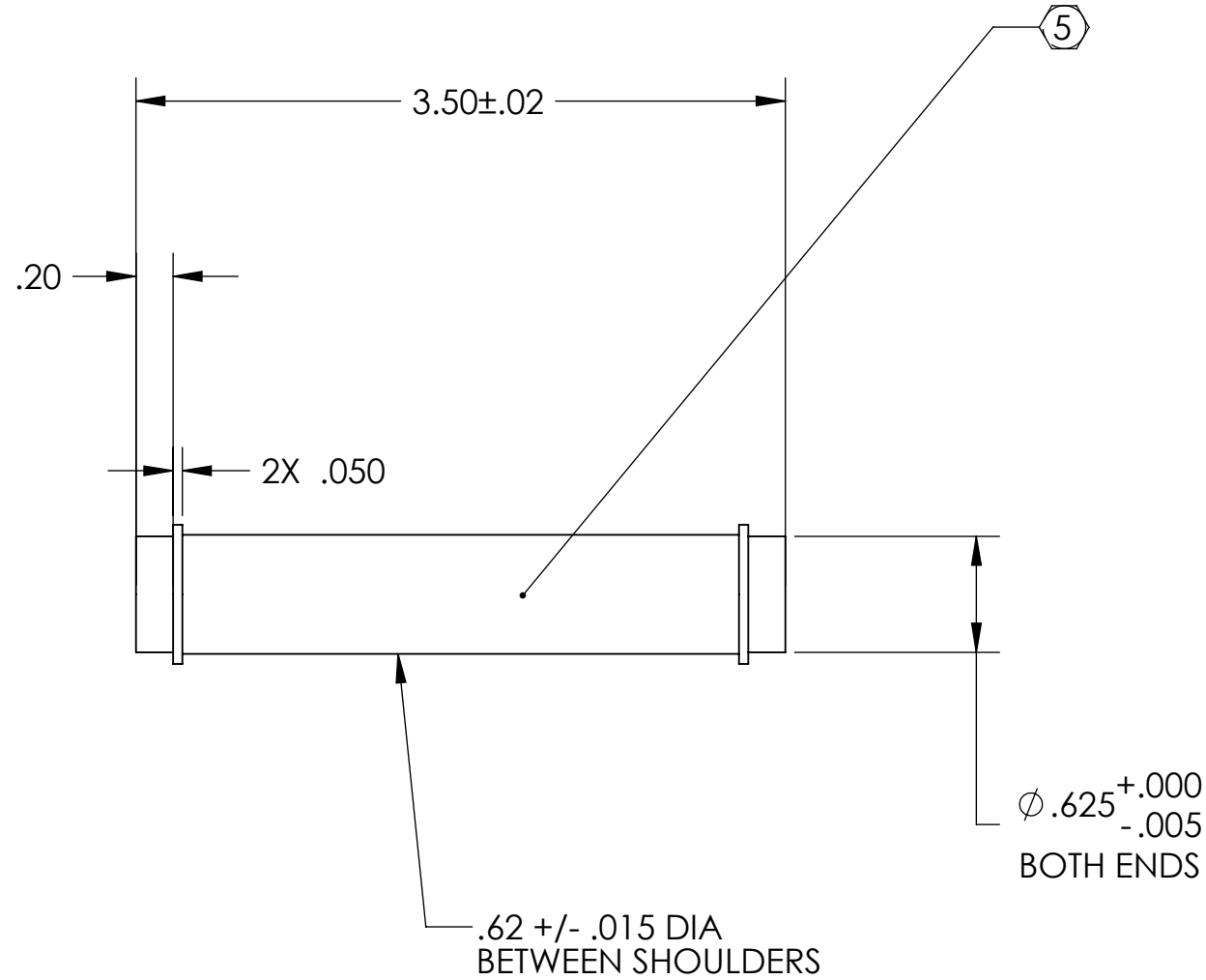


D0901449_AD_LIGO_TCS_LASER_ENCLOSURE_DUMP_TUBE, PART PDM REV: X-000, DRAWING PDM REV: X-001

NOTES CONTINUED:
 ⑤ SCRIBE, ENGRAVE, OR MECHANICALLY STAMP (NO INKS OR DYES) DRAWING PART NUMBER AND REVISION ON NOTED SURFACE FOLLOWED ON THE NEXT LINE BY A THREE DIGIT SERIAL NUMBER. SERIAL NUMBERS START AT 001 FOR THE FIRST ARTICLE AND PROCEED CONSECUTIVELY. USE .07" HIGH CHARACTERS. EXAMPLE: DXXXXXX-VY, S/N 001. A VIBRATORY TOOL MAY BE USED.

REV.	DATE	DCN #	DRAWING TREE #
-	07-29-2009	E0900223-v1	-
-	-	-	-
-	-	-	-



NOTES AND TOLERANCES: (UNLESS OTHERWISE SPECIFIED)				LIGO CALIFORNIA INSTITUTE OF TECHNOLOGY MASSACHUSETTS INSTITUTE OF TECHNOLOGY		PART NAME	
DIMENSIONS ARE IN INCHES TOLERANCES: .XX ± .02 .XXX ± .010 ANGULAR ± 1.0°				1. INTERPRET DRAWING PER ASME Y14.5-1994. 2. REMOVE ALL SHARP EDGES, R.02 MIN. 3. DO NOT SCALE FROM DRAWING. 4. ALL MACHINING FLUIDS SHALL BE WATER SOLUBLE AND FREE OF SULFUR, CHLORINE AND SILICONE, SUCH AS CINCINNATI MILACRON'S CIMTECH 410.		ADLIGO_TCS_LASER_ENCLOSURE_DUMP_TUBE	
MATERIAL		FINISH		SYSTEM		SUB-SYSTEM	
6061-T6		N/A		ADVANCED LIGO		AOS	
NEXT ASSY				DESIGNER		DATE	
D0901417				KMAILAND		07-16-2009	
CHECKER				DRAFTER		SIZE DWG. NO.	
APPROVAL				KMAILAND		B D0901449	
SCALE: 1:1				PROJECTION:		REV.	
						v1	
						SHEET 1 OF 1	