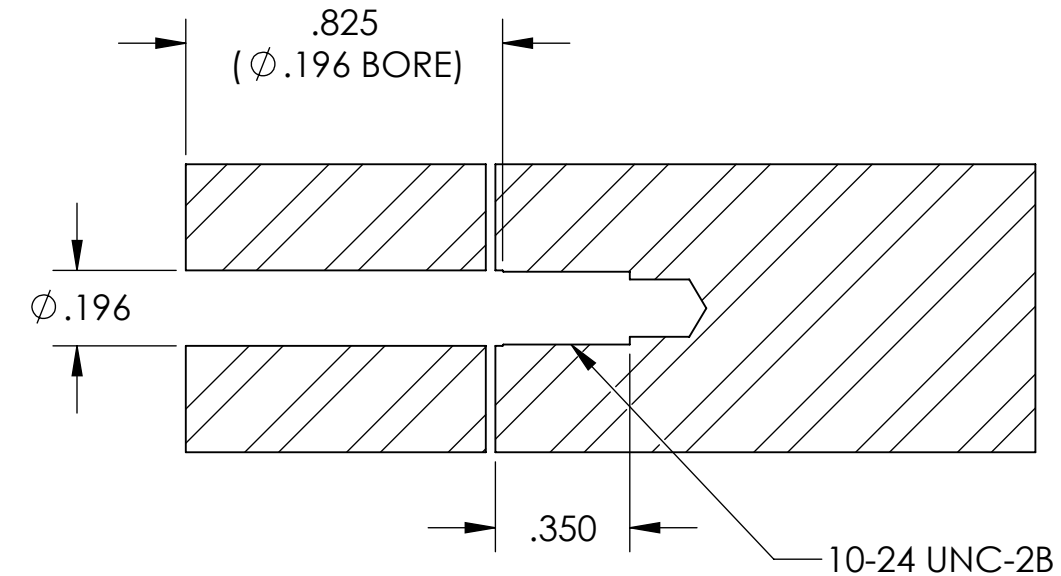
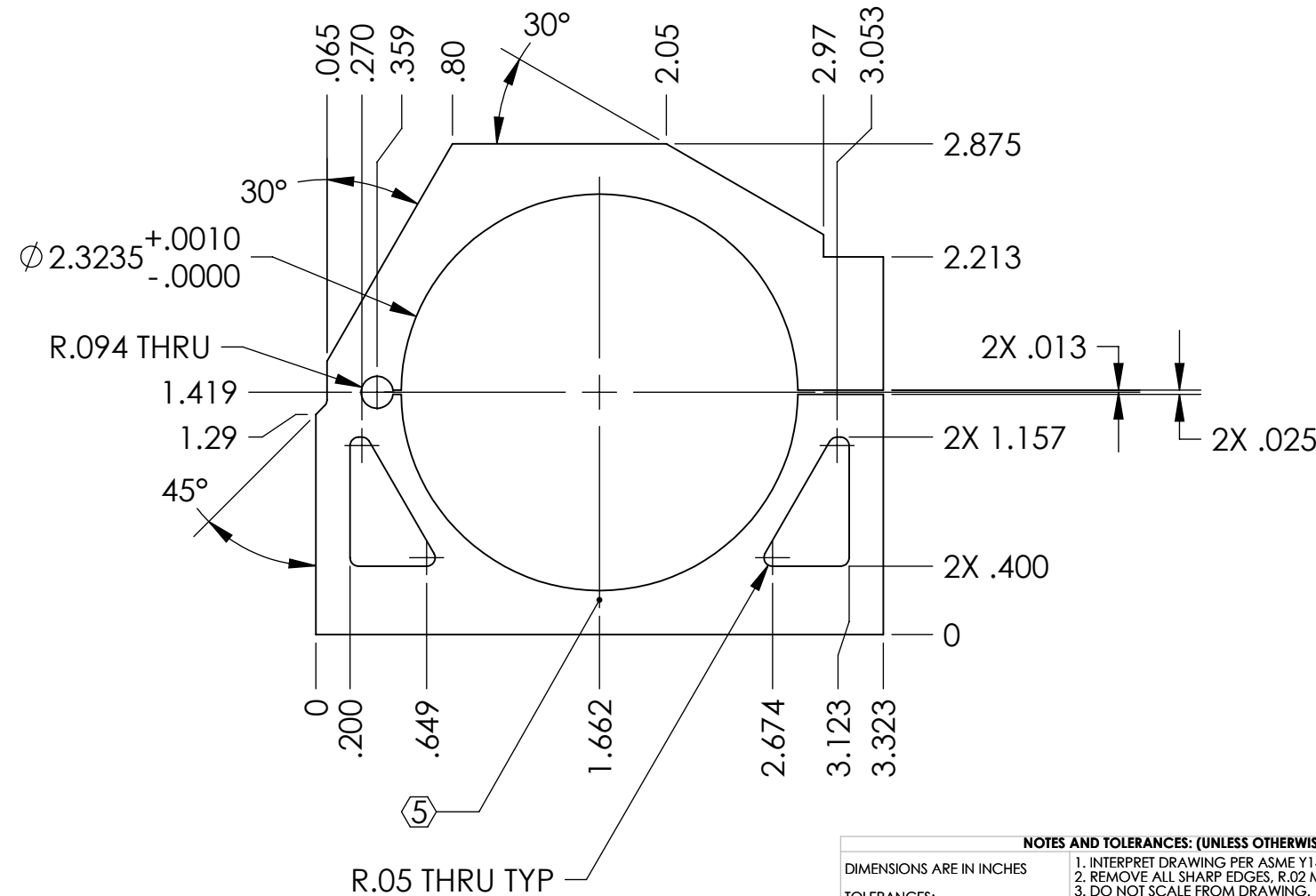
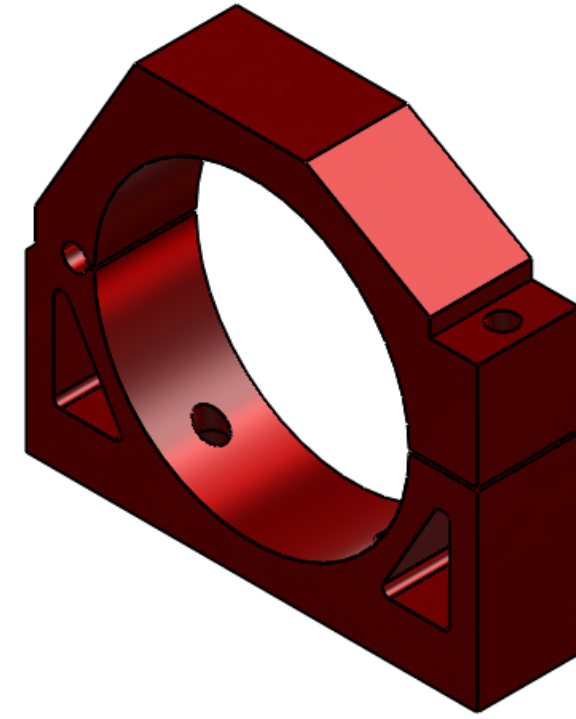
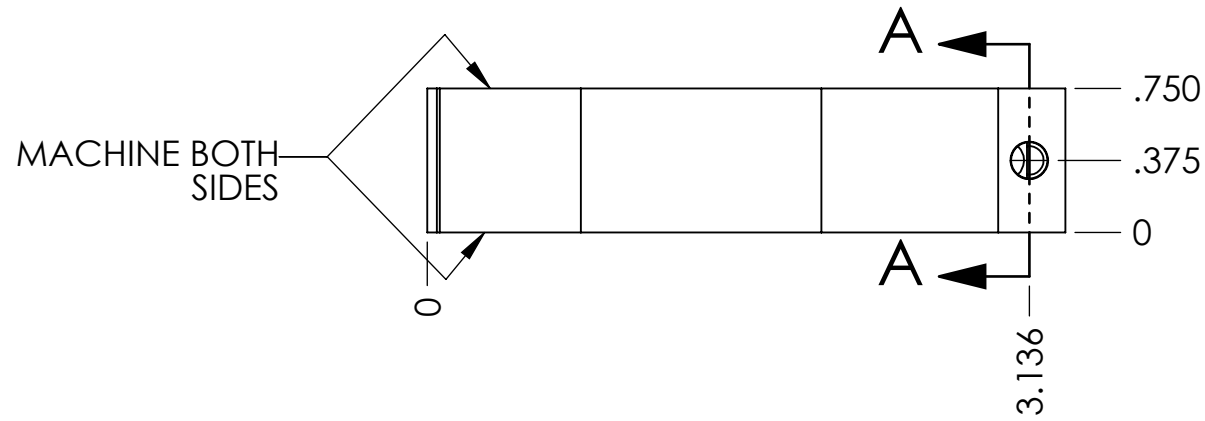


NOTES CONTINUED:
 5 SCRIBE, ENGRAVE, OR MECHANICALLY STAMP (NO INKS OR DYES) DRAWING PART NUMBER AND REVISION ON NOTED SURFACE FOLLOWED ON THE NEXT LINE BY A THREE DIGIT SERIAL NUMBER. SERIAL NUMBERS START AT 001 FOR THE FIRST ARTICLE AND PROCEED CONSECUTIVELY. USE .07" HIGH CHARACTERS. EXAMPLE: DXXXXXX-VY, S/N 001. A VIBRATORY TOOL MAY BE USED.

REV.	DATE	DCN #	DRAWING TREE #
v1	09 JULY 2009	E0900192	E0900191
-	-	-	-
-	-	-	-



D0901379 AdLIGO AOS Oplev Telescope Clamp, 2.323 in D, PART PDM REV: X-008, DRAWING PDM REV: X-007

NOTES AND TOLERANCES: (UNLESS OTHERWISE SPECIFIED)
 1. INTERPRET DRAWING PER ASME Y14.5-1994.
 2. REMOVE ALL SHARP EDGES, R.02 MIN.
 3. DO NOT SCALE FROM DRAWING.
 4. ALL MACHINING FLUIDS SHALL BE WATER SOLUBLE AND FREE OF SULFUR, CHLORINE AND SILICONE, SUCH AS CINCINNATI MILACRON'S CIMTECH 410.

DIMENSIONS ARE IN INCHES
 TOLERANCES:
 .XX ± .01
 .XXX ± .005
 ANGULAR ± 1.0°

MATERIAL		FINISH		NEXT ASSY		PART NAME		SIZE		DWG. NO.		REV.	
AISI 304		N/A µinch		D0901364		ADVANCED LIGO AOS		B		D0901379		v1	
DESIGNER		DRAFTER		CHECKER		APPROVAL		SCALE		PROJECTION		SHEET 1 OF 1	
C. CONLEY		C. CONLEY						NONE		FIRST ANGLE			