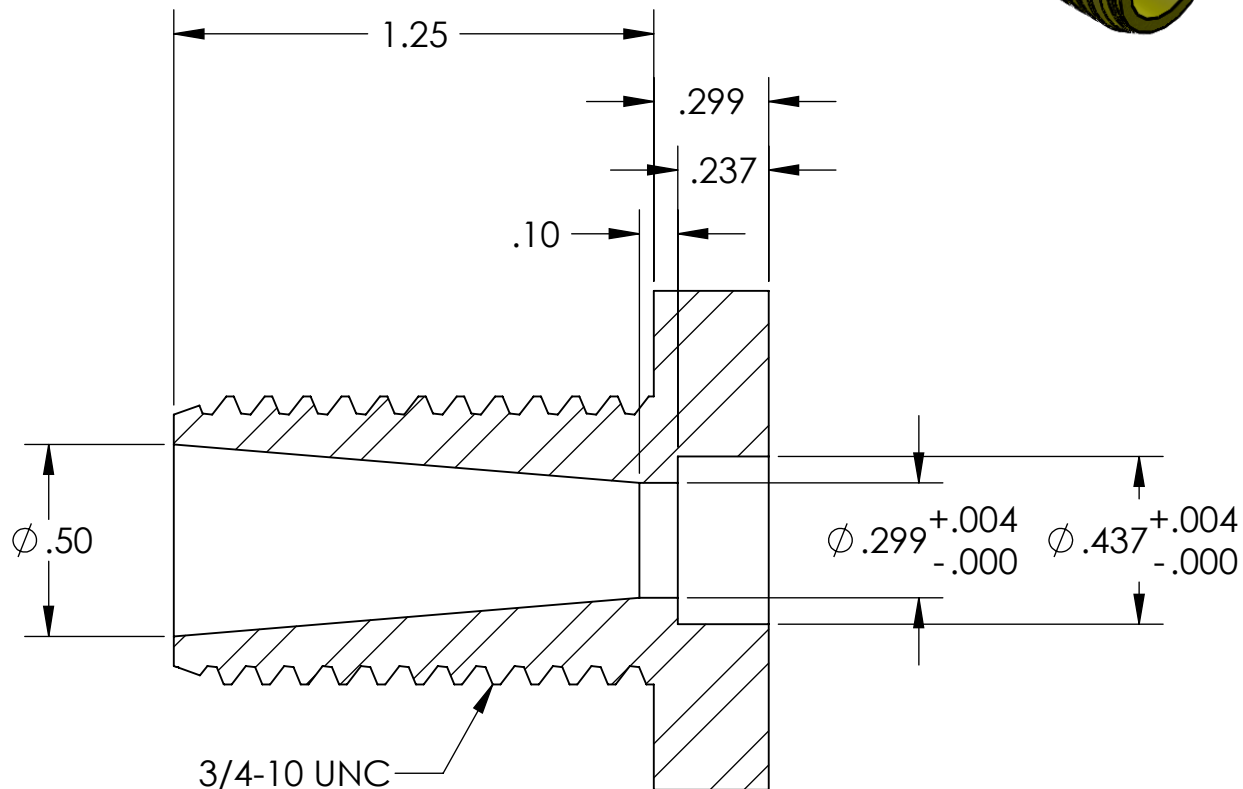
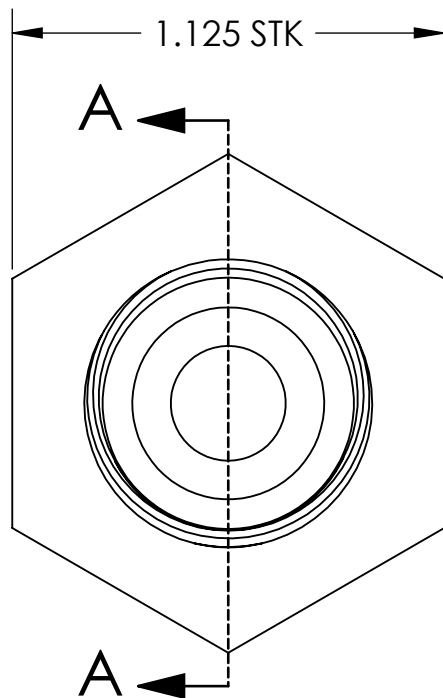
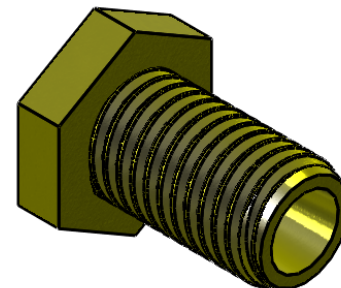


NOTES CONTINUED:

Ⓢ BAG ALL ITEMS INDIVIDUALLY AND MARK OR TAG EACH BAG WITH DRAWING NUMBER, REVISION, AND QUANTITY. EXAMPLE: DXXXXXX-VY, QTY: 1

Ⓢ MAKE FROM: HEX SCREW, 300 SERIES STAINLESS STEEL, 3/4-10 UNC, 1-1/4 LONG, 1-1/8 HEX

REV.	DATE	DCN #	DRAWING TREE #
v1	08 JULY 2009	E0900192	E0900191
-	-	-	-
-	-	-	-



SECTION A-A

NOTES AND TOLERANCES: (UNLESS OTHERWISE SPECIFIED)

DIMENSIONS ARE IN INCHES

TOLERANCES:

.XX ± .01
.XXX ± .005

ANGULAR ± 1.0°

1. INTERPRET DRAWING PER ASME Y14.5-1994.
2. REMOVE ALL SHARP EDGES, R.02 MIN.
3. DO NOT SCALE FROM DRAWING.
4. ALL MACHINING FLUIDS SHALL BE WATER SOLUBLE AND FREE OF SULFUR, CHLORINE AND SILICONE, SUCH AS CINCINNATI MILACRON'S CIMTECH 410.

MATERIAL



FINISH

N/A μinch



CALIFORNIA INSTITUTE OF TECHNOLOGY
MASSACHUSETTS INSTITUTE OF TECHNOLOGY

SYSTEM

ADVANCED LIGO

NEXT ASSY

D0901363

SUB-SYSTEM

AOS

PART NAME

ADLIGO AOS OPLEV LOAD ADJUSTMENT SCREW

DESIGNER

C. CONLEY 08 JULY 2009

DRAFTER

C. CONLEY 08 JULY 2009

CHECKER

APPROVAL

SIZE

A

DWG. NO.

D0901372

REV.

v1

SCALE: NONE

PROJECTION:



SHEET 1 OF 1