

4

3

2

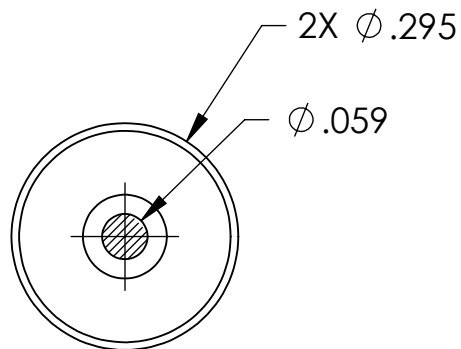
1

NOTES CONTINUED:

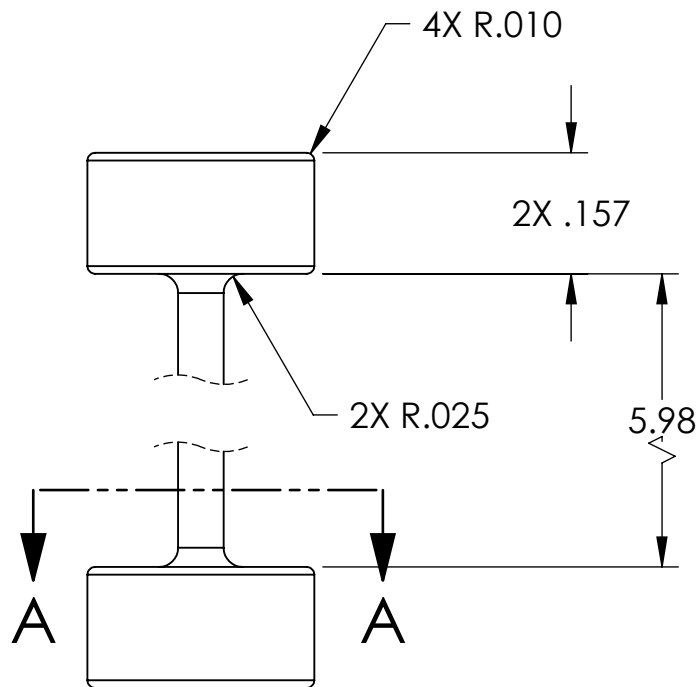
Ⓢ BAG ALL ITEMS INDIVIDUALLY AND MARK OR TAG EACH BAG WITH DRAWING NUMBER, REVISION, AND QUANTITY. EXAMPLE: DXXXXXX-VY, QTY: 1

Ⓢ MATERIAL: MARAGING STEEL, 245 KSI MINIMUM YIELD STRENGTH.

REV.	DATE	DCN #	DRAWING TREE #
v1	14 JULY 2009	E0900192	E0900191
-	-	-	-
-	-	-	-



SECTION A-A



NOTES AND TOLERANCES: (UNLESS OTHERWISE SPECIFIED)

DIMENSIONS ARE IN INCHES

TOLERANCES:

.XX ± .01  
.XXX ± .005

ANGULAR ± 1.0°

1. INTERPRET DRAWING PER ASME Y14.5-1994.
2. REMOVE ALL SHARP EDGES, R.02 MIN.
3. DO NOT SCALE FROM DRAWING.
4. ALL MACHINING FLUIDS SHALL BE WATER SOLUBLE AND FREE OF SULFUR, CHLORINE AND SILICONE, SUCH AS CINCINNATI MILACRON'S CIMTECH 410.

MATERIAL



FINISH

N/A μinch



CALIFORNIA INSTITUTE OF TECHNOLOGY  
MASSACHUSETTS INSTITUTE OF TECHNOLOGY

SYSTEM

ADVANCED LIGO

SUB-SYSTEM

AOS

NEXT ASSY

D0900912

PART NAME

ADLIGO AOS OPLEV LOAD WIRE, 5.98"

DESIGNER

C. CONLEY 07 JULY 2009

DRAFTER

C. CONLEY 14 JULY 2009

CHECKER

APPROVAL

SIZE

A

DWG. NO.

D0901360

REV.

v1

SCALE: NONE

PROJECTION:



SHEET 1 OF 1

4

3

2

1