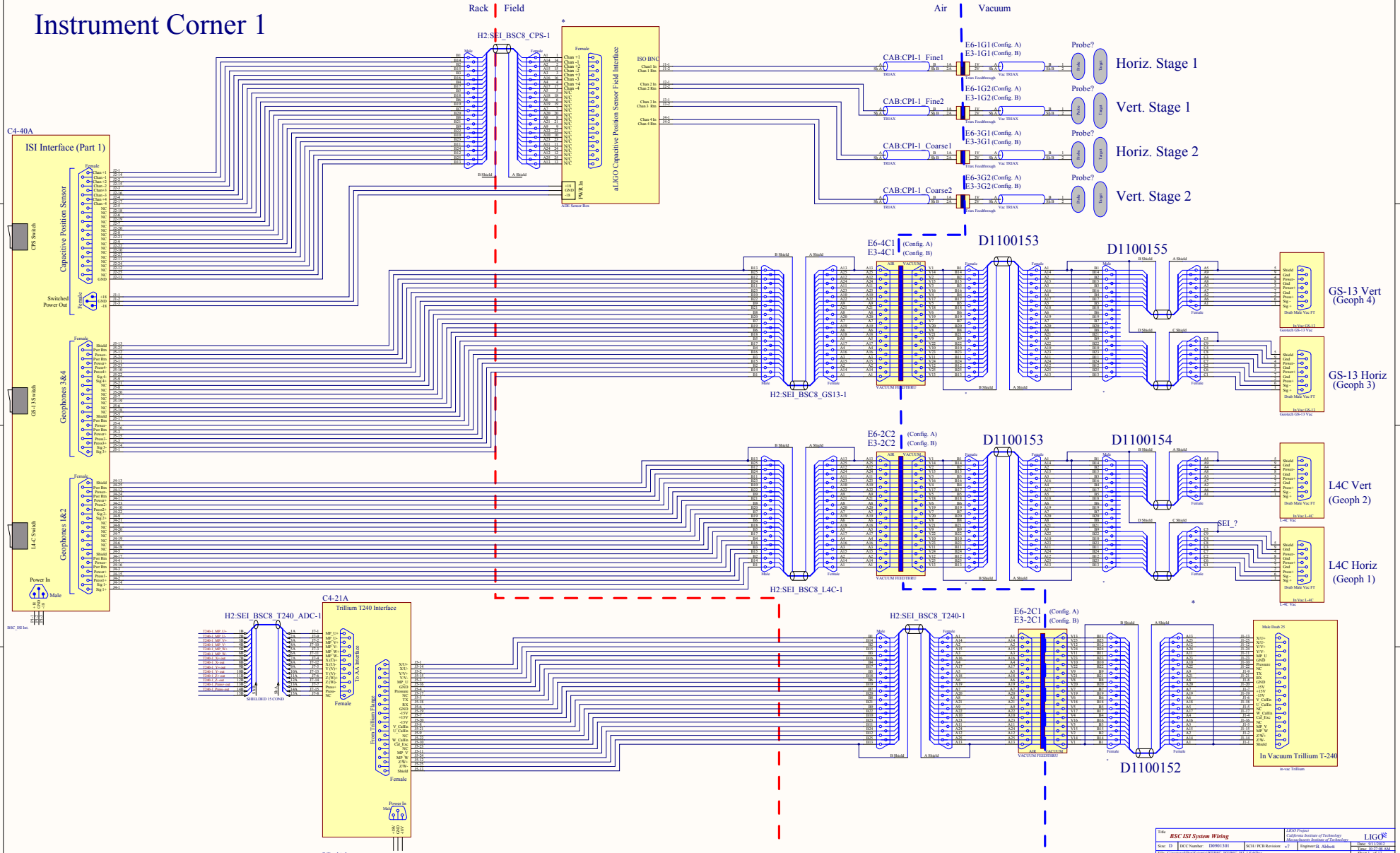
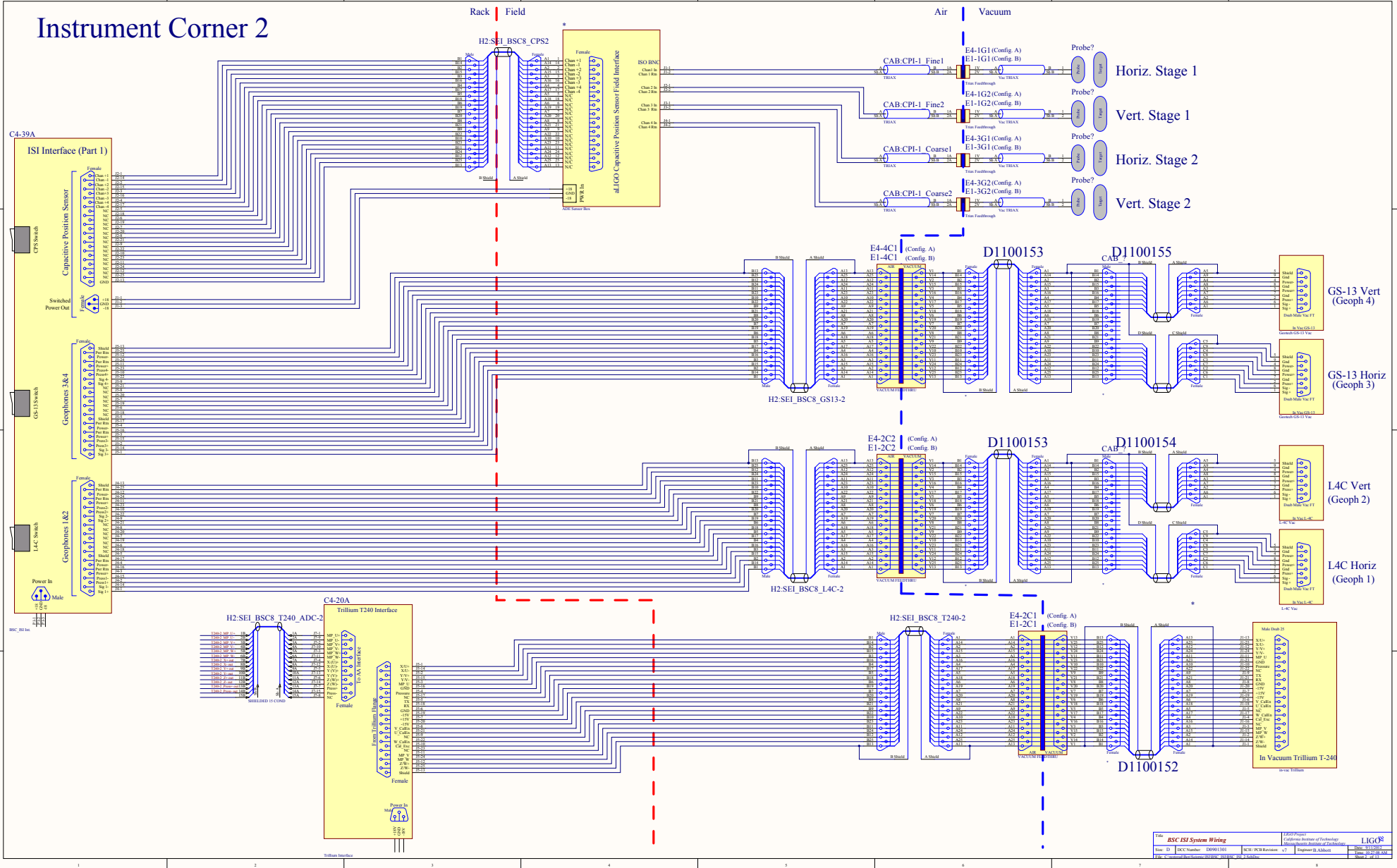


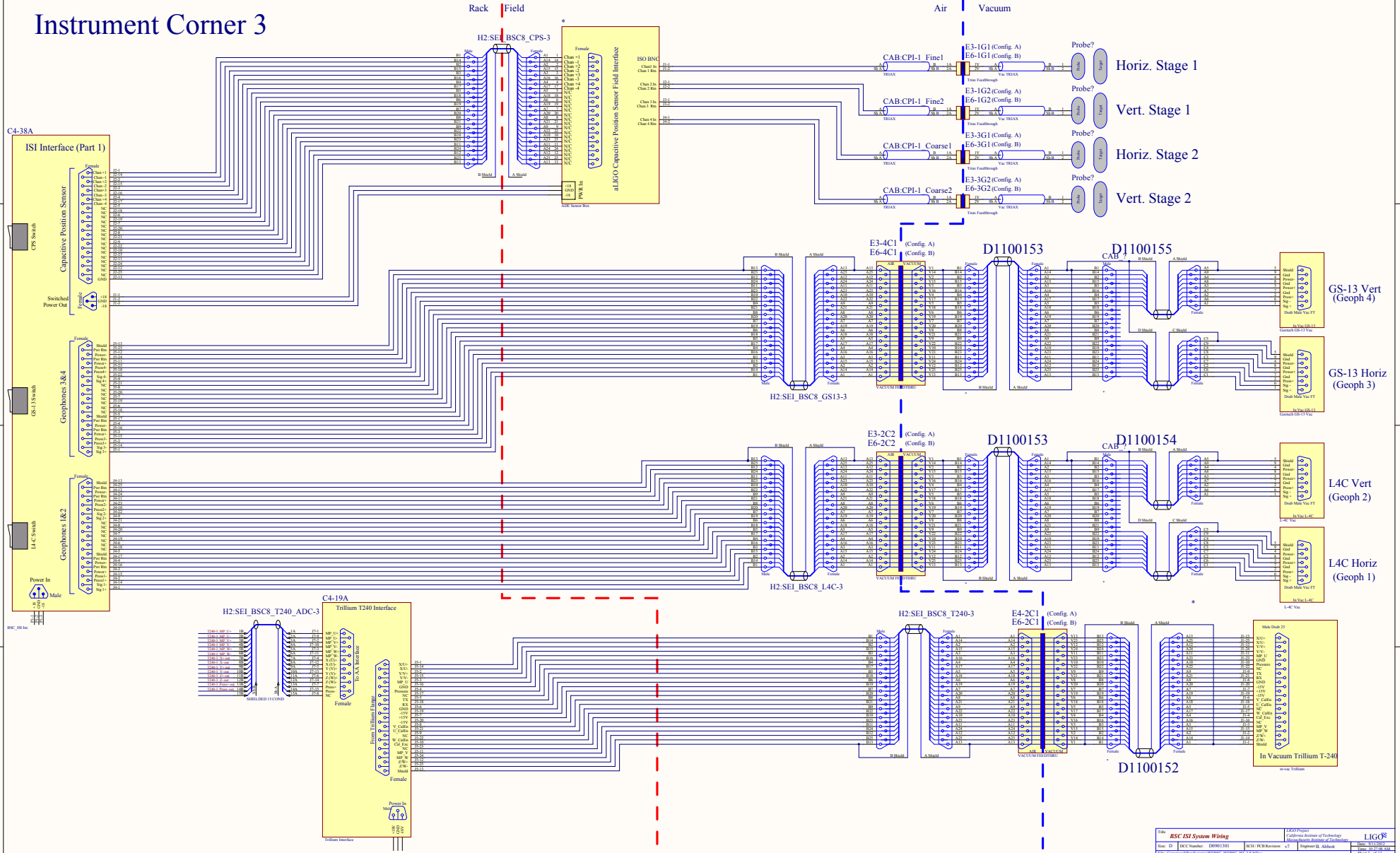
Instrument Corner 1



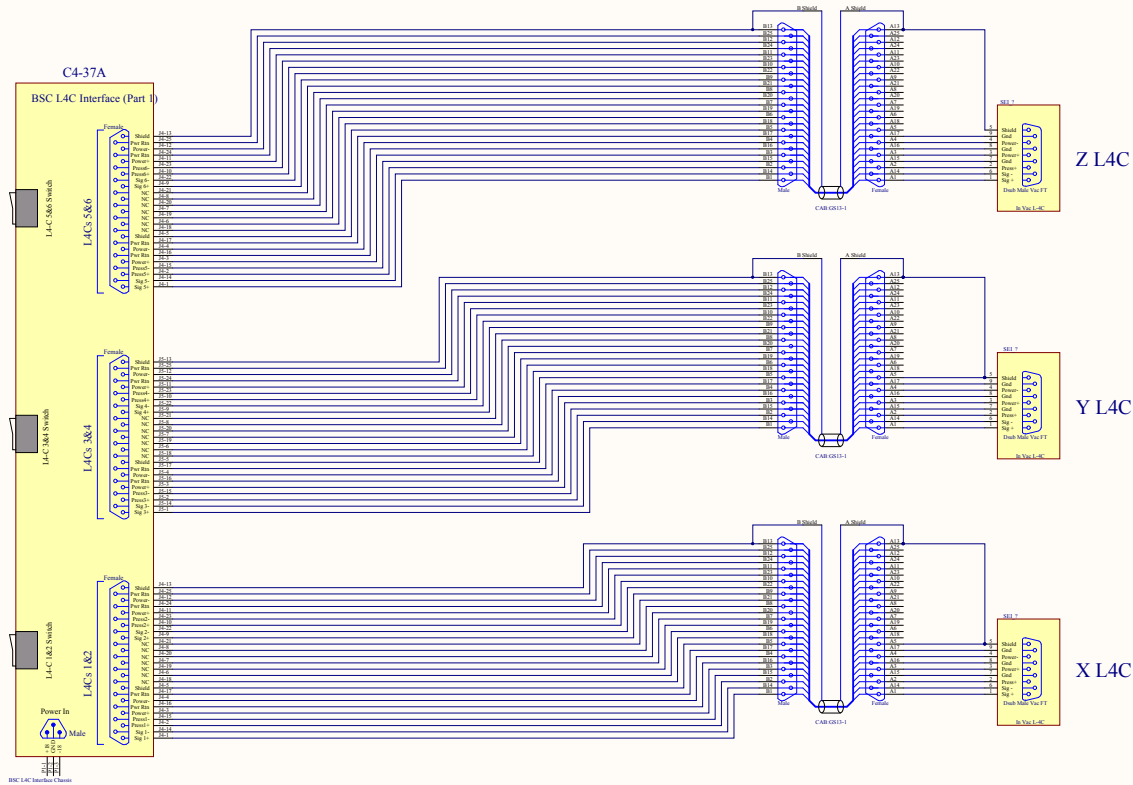
Instrument Corner 2

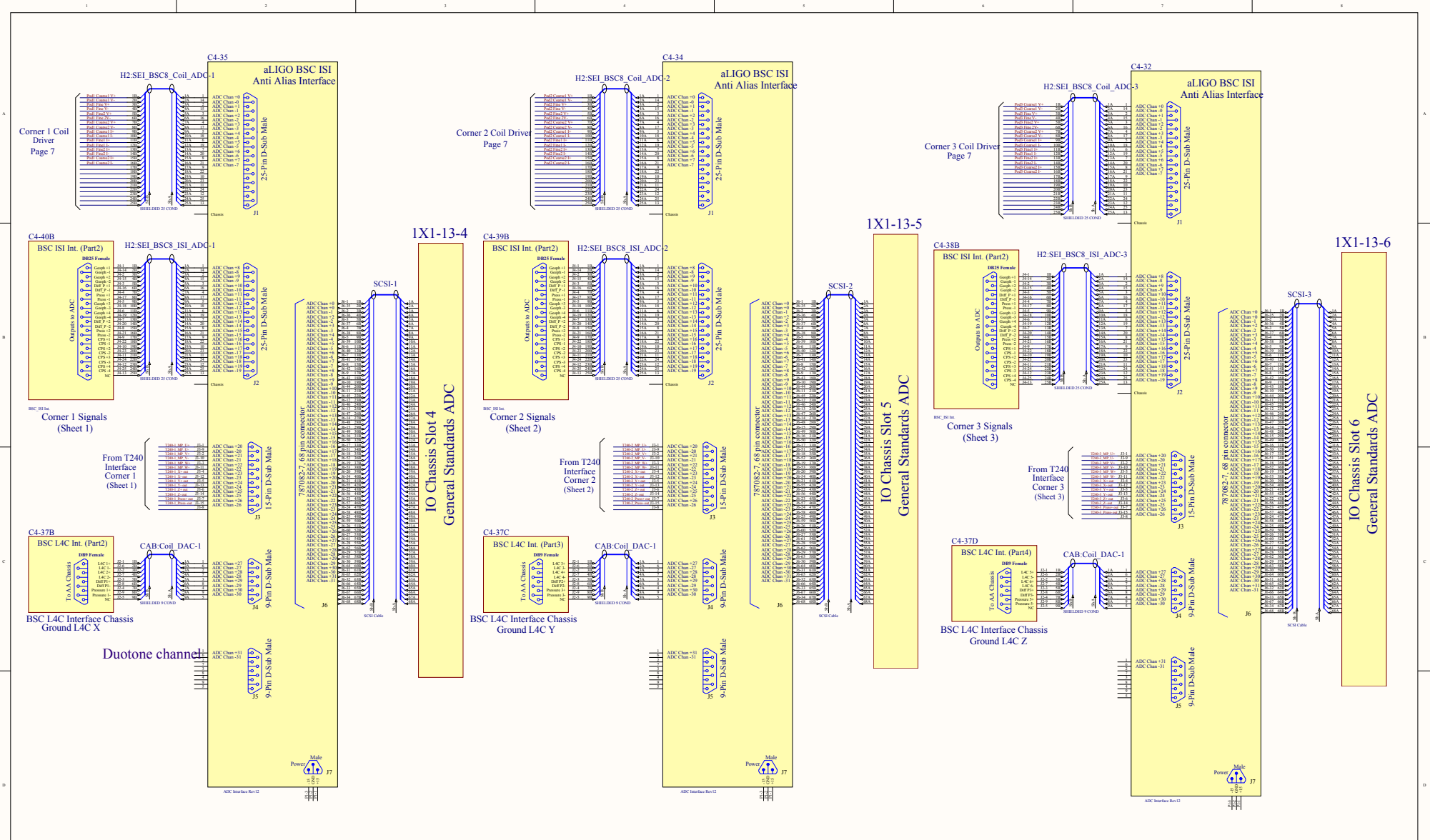


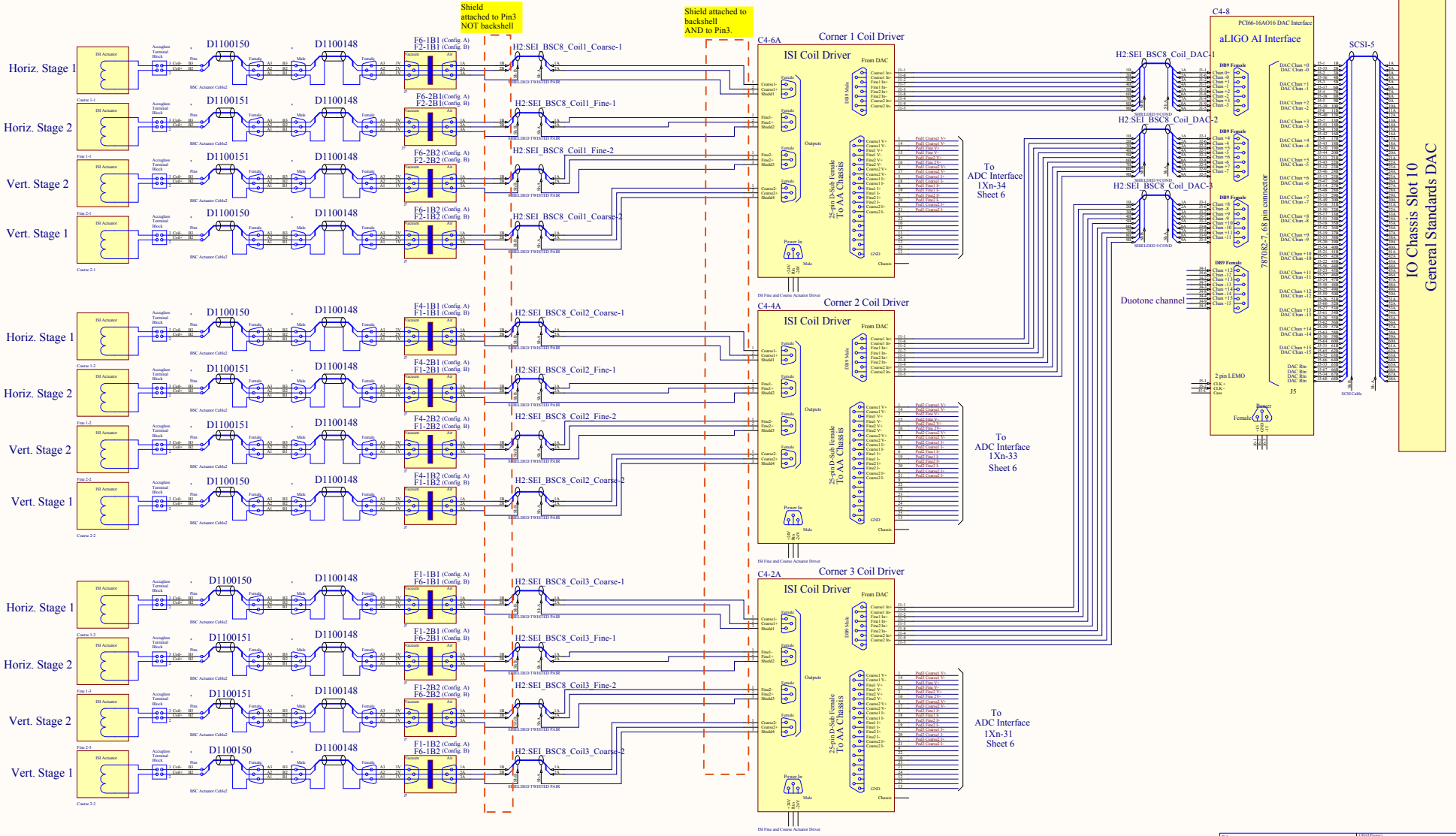
Instrument Corner 3



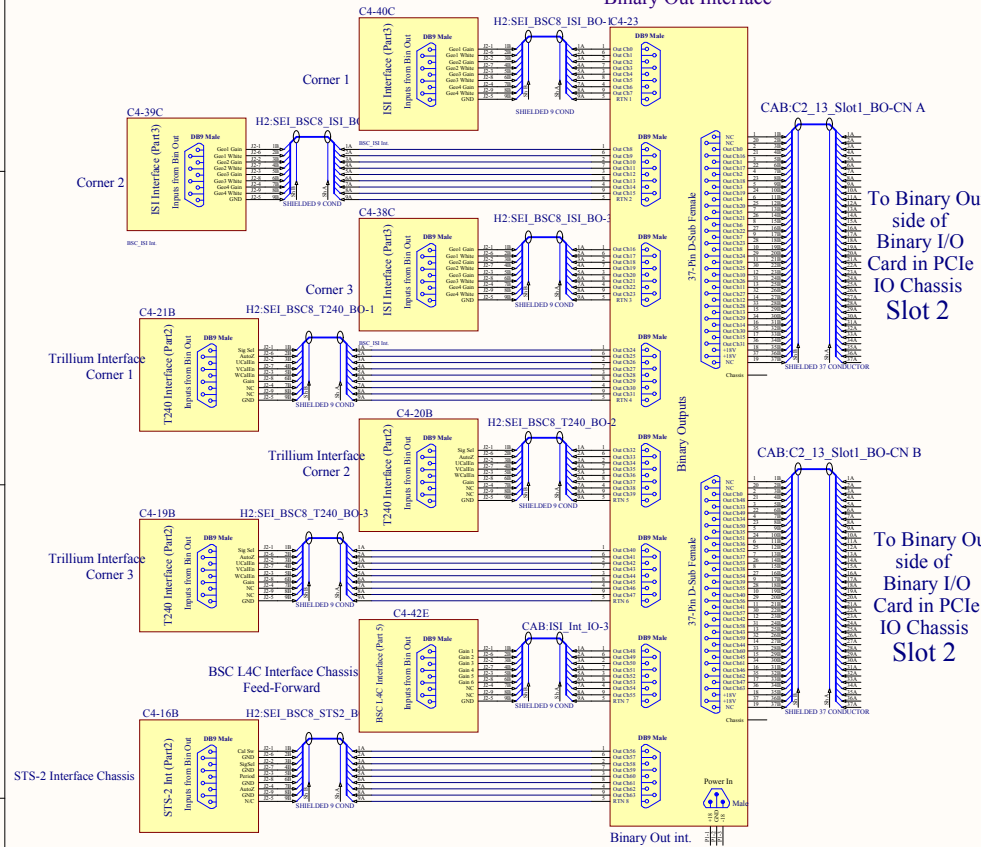
L4C Ground Sense geophones







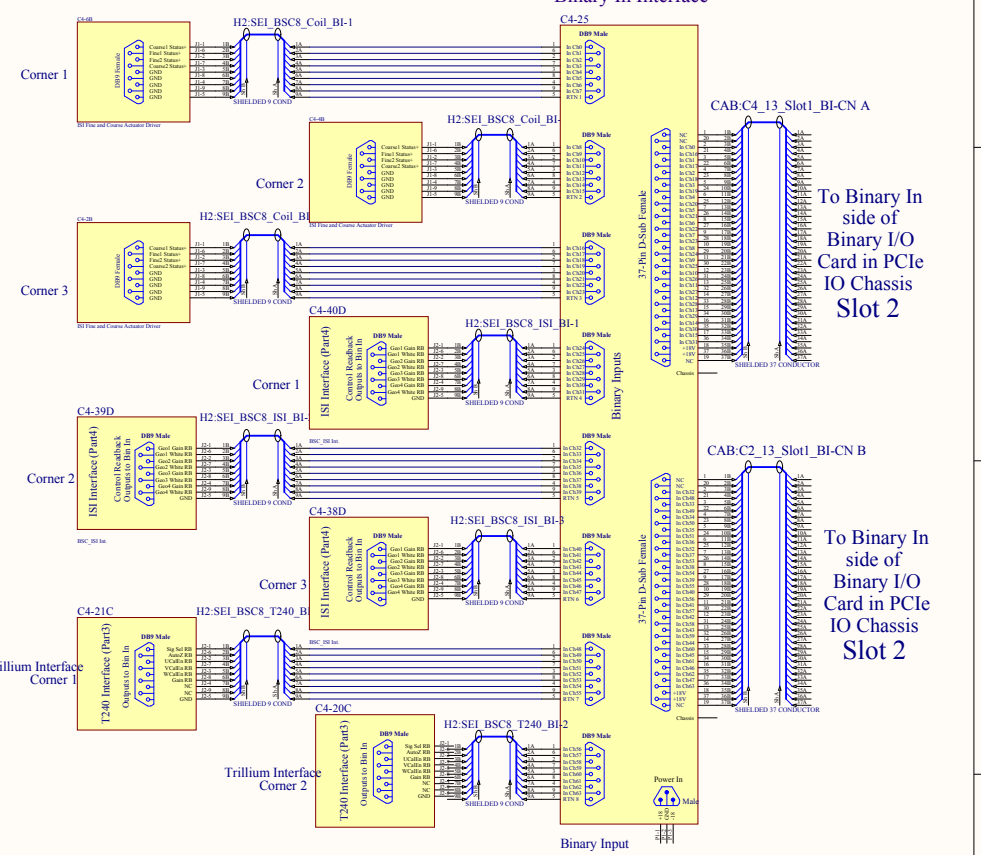
Binary Out Interface



To Binary Out side of Binary I/O Card in PCIe IO Chassis Slot 2

To Binary Out side of Binary I/O Card in PCIe IO Chassis Slot 2

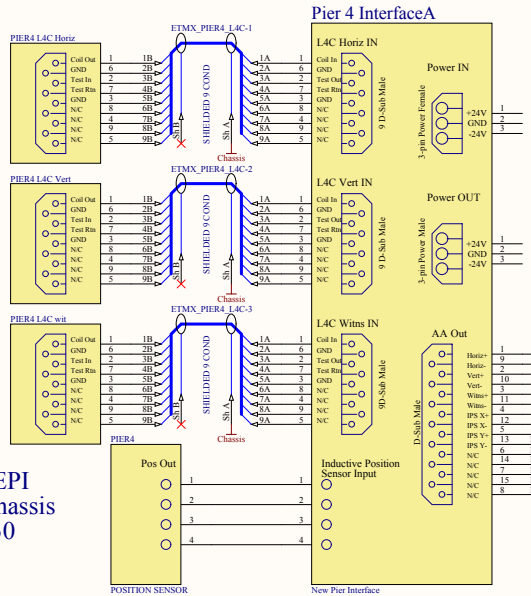
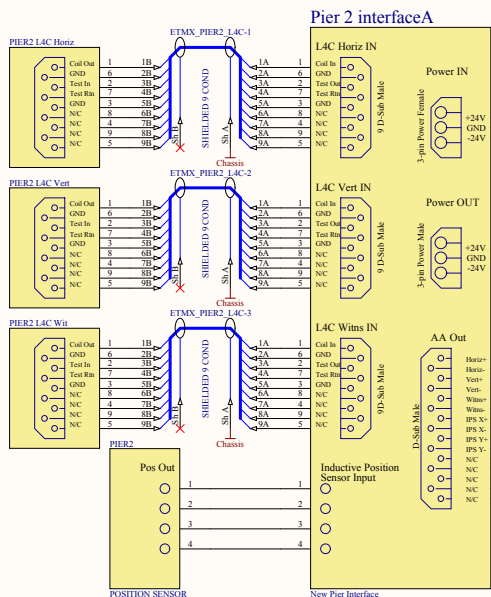
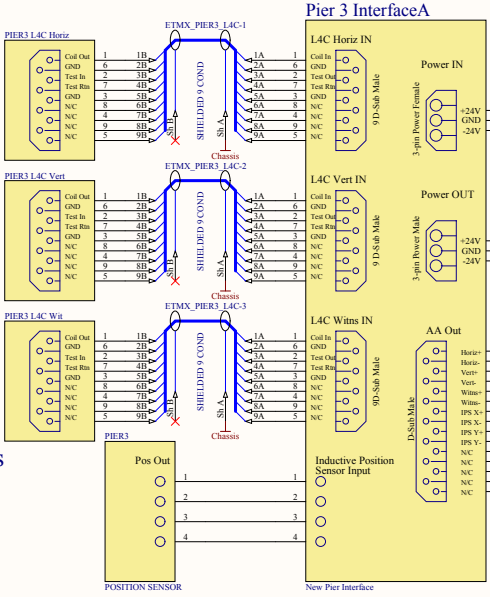
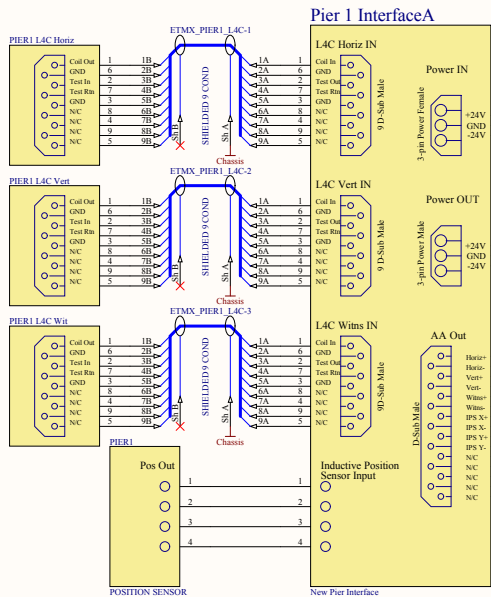
Binary In Interface



To Binary In side of Binary I/O Card in PCIe IO Chassis Slot 2

To Binary In side of Binary I/O Card in PCIe IO Chassis Slot 2

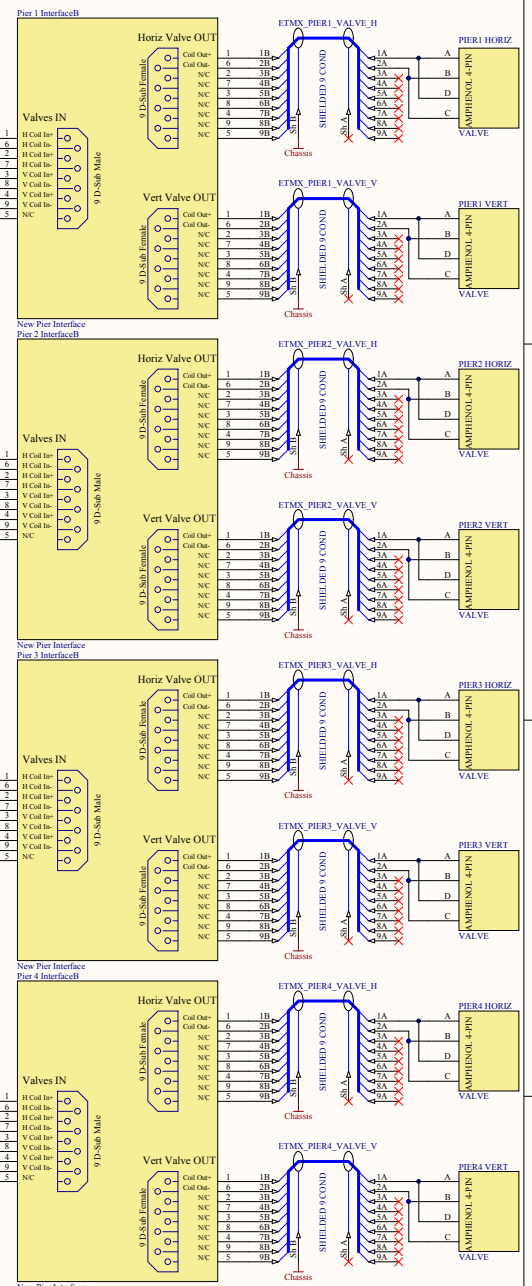
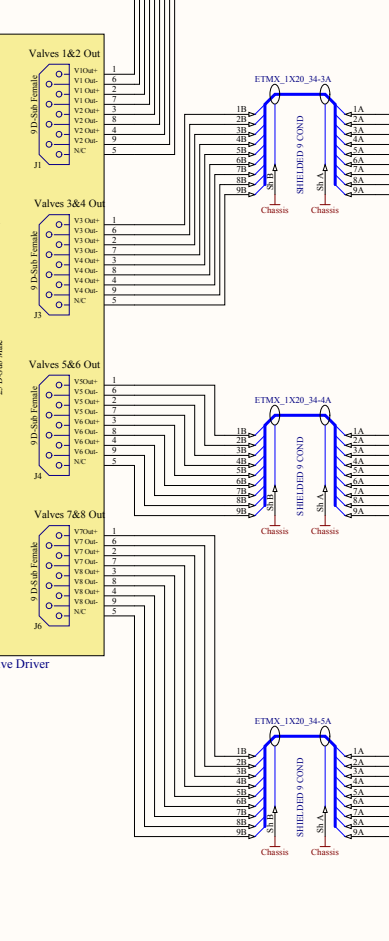
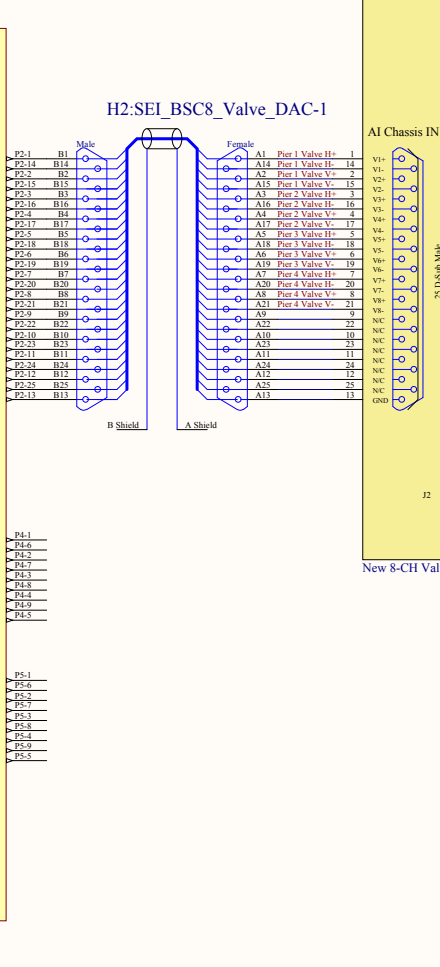
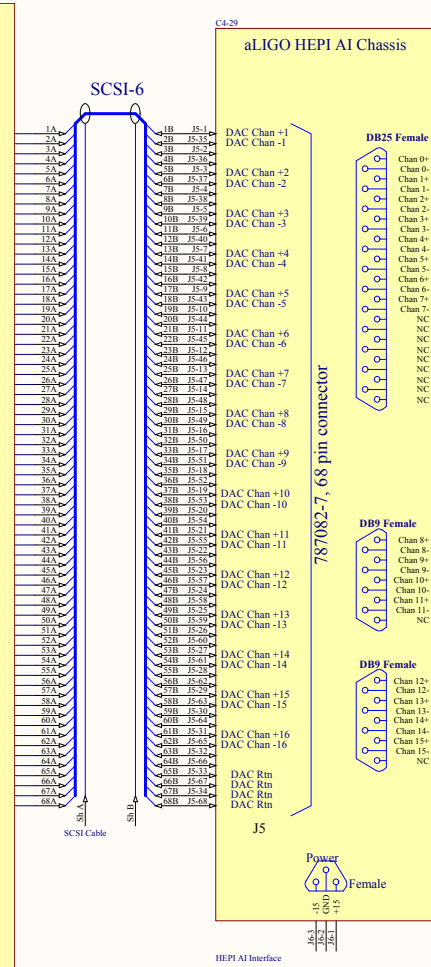
BSC IS3 System Wiring			
Rev:	D	IS3 Number: 020901.001	4200-Project
Author:	D	Customer: Institute of Technology	Customer: Institute of Technology
Date:	Rev: 01/2012	Revision: 07	Drawn and checked by: [Name]
File Name:	Rev: 01/2012	Revision: 07	Checked by: [Name]



Title: ALIGO BSC ISI HEPI System Schematics			
Size: C	DCC Number: D0901301	Ligo Project California Institute of Technology Massachusetts Institute of Technology	Cannot open file C:\Bett\miscellan aligologo_1.jpg
Drawn by: Ben Abbott	Date: 9/11/2012	Revision: v7	
File: C:\instrom\BscSchem\ISI\BSC_ISI\HEPI_SchDoc		Time: 10:27:10 AM Sheet 10 of 13	

1X1-13-11

IO Chassis Slot 11
General Standards DAC

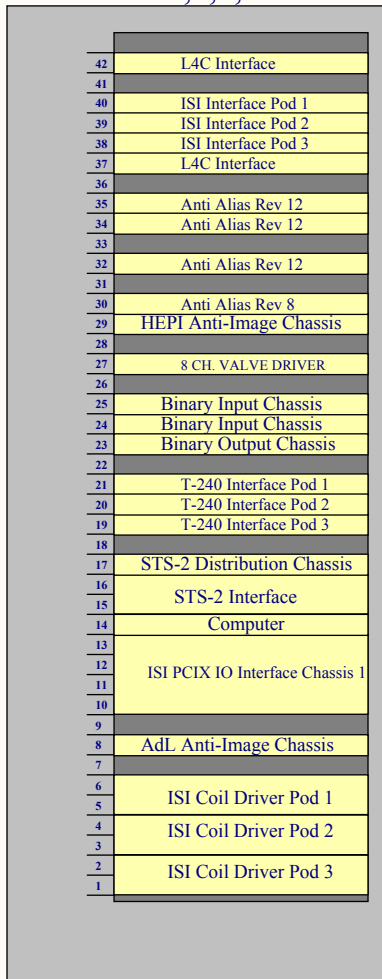


Title	aLIGO BSC ISI HEPI System Schematics		
Size	C	DCC Number: D0901301	Ligo Project California Institute of Technology Massachusetts Institute of Technology ligo.org
Drawn by:	Ben Abbott	Date: 9/11/2012	Revision: v7
File:	C:\inst3\BSC\ISIS\HEPI_SchDoc	Time:	10:27:11 AM Sheet 12 of 13

L1-SEI-C4, C5, C6, and Ends BSC 1,2,3,4&5

Per Chamber Per aLIGO (x16 BSCs)

BSC AA Chassis = 3	48
HEPI AA Chassis = 1	16
HEPI AI Chassis = 1	16
aLIGO AI Chassis = 1	16
Filter Boards = 20	320
Binary In Chassis = 2	32
Binary Out Chassis = 1	16
BSC ISI Int = 3	48
Trillium Chassis = 3	48
8Ch. Valve = 1	16
STS Dist Chassis = 1	16
STS Int. Chassis = 1	16
Coil dvr. Chassis = 3	48



➤ HEPI Components

➤ STS-2 Input /Distribution

Title <i>BSC ISI System Wiring</i>			
Size: B	DCC Number: D0901301		<i>Ligo Project</i> <i>California Institute of Technology</i> <i>Massachusetts Institute of Technology</i>
Drawn by: Ben Abbott	Date: 9/11/2012	Revision: v7	
File: C:\restored\Ben\Seismic\ISI\BSC_ISI\BSC_ISI_10_SchDoc			Cannot open file C:\Ben\miscellan y\ligologo_1.jpg
Time: 10:27:11 AM			Sheet 13 of 13