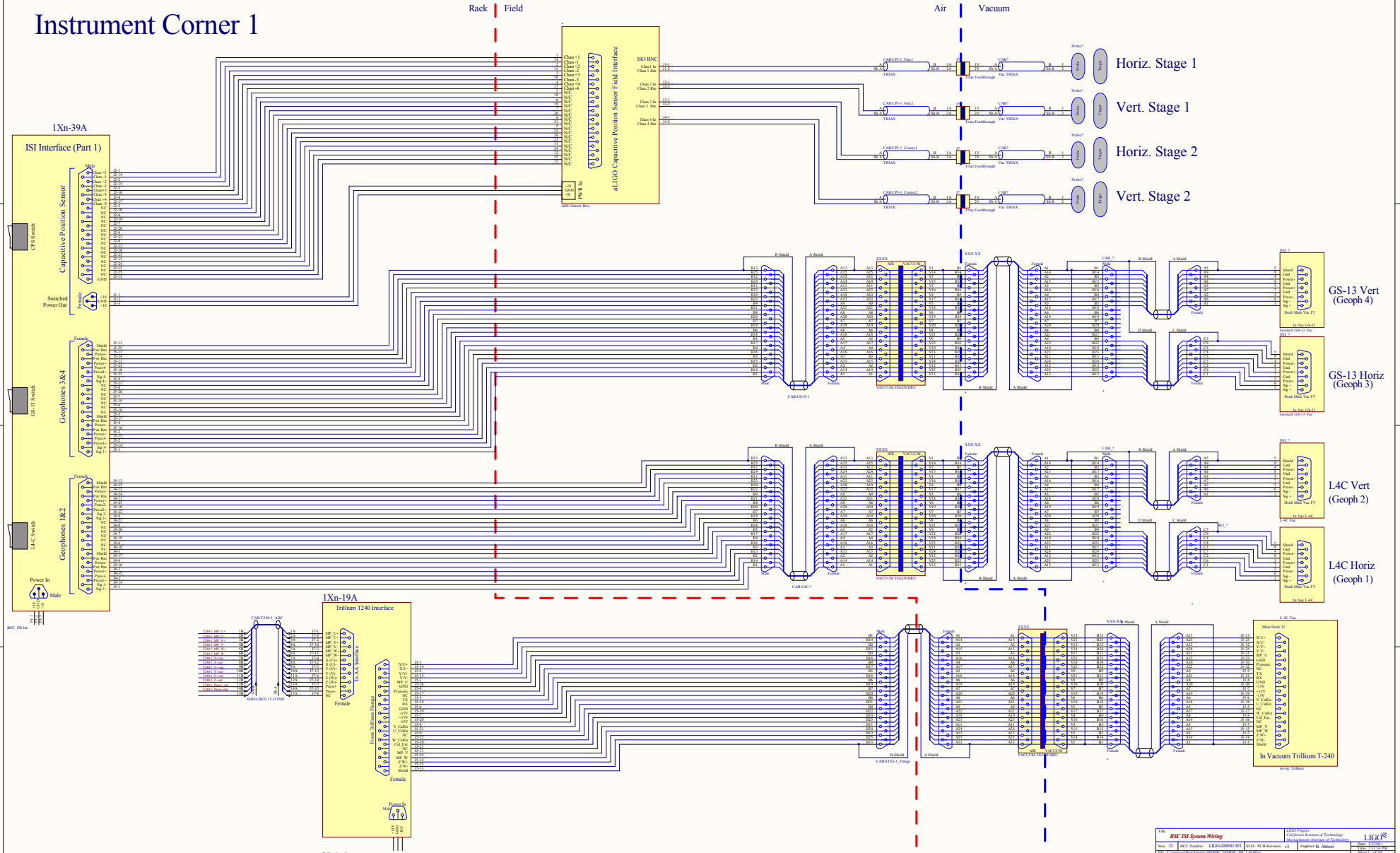
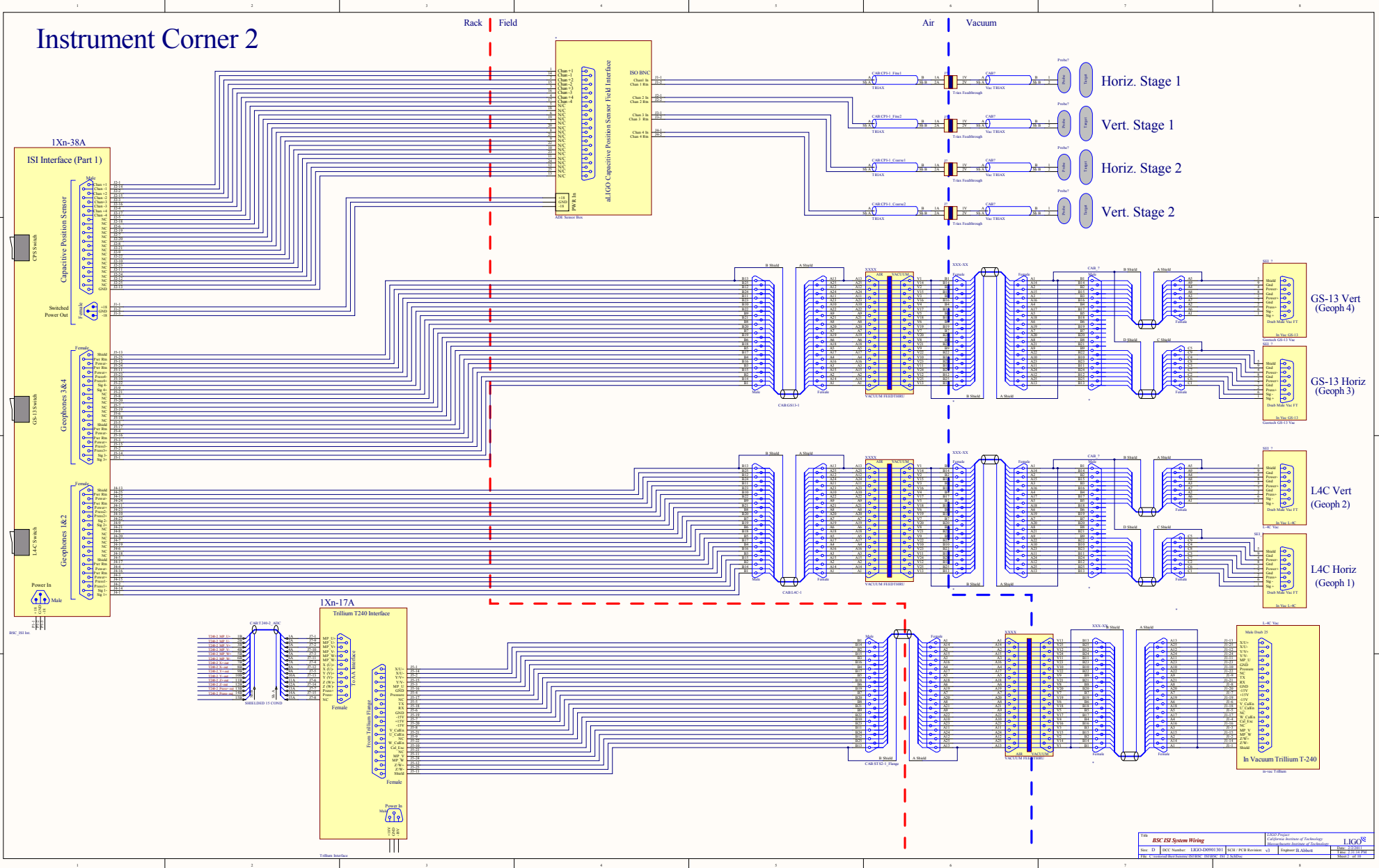


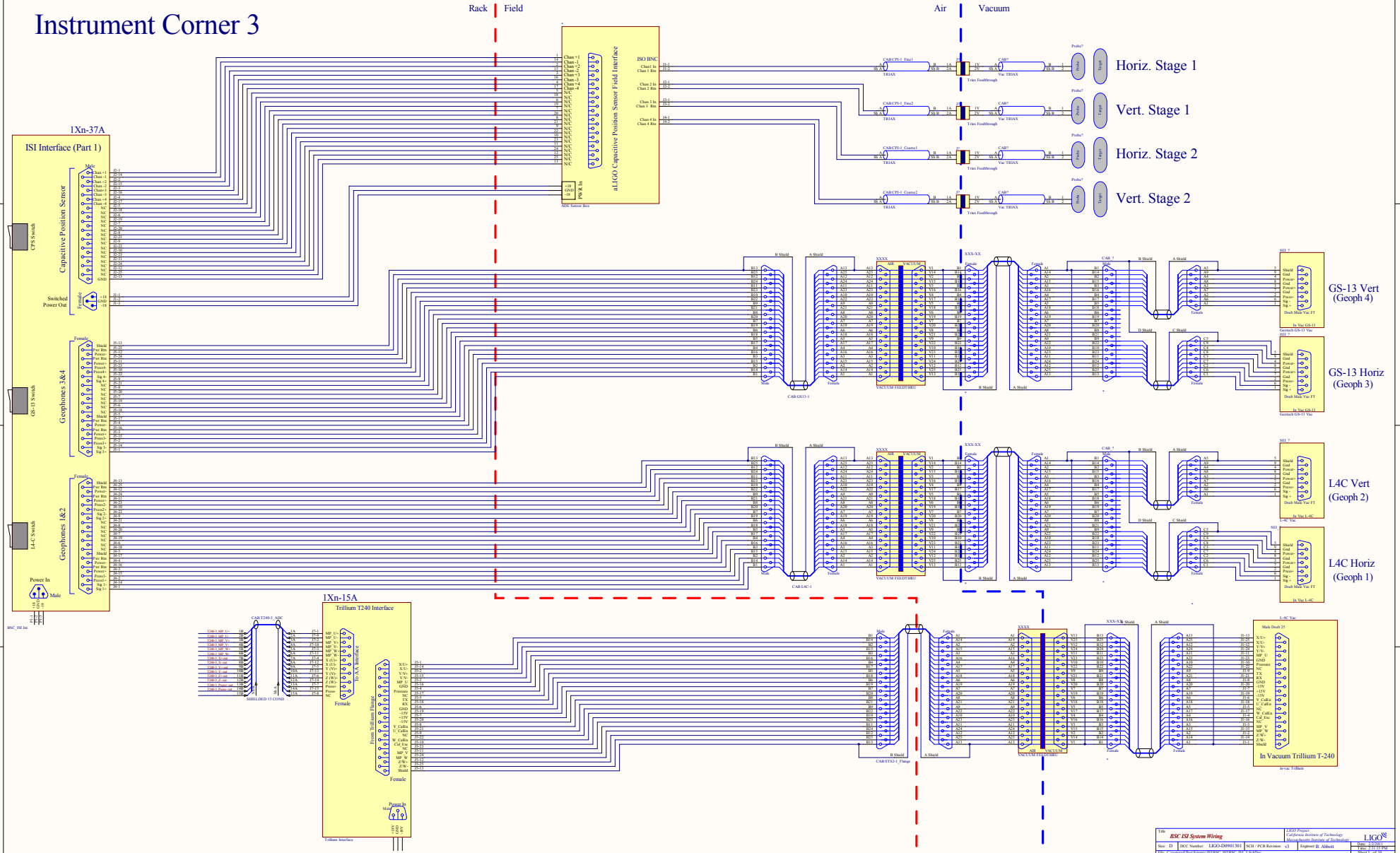
Instrument Corner 1



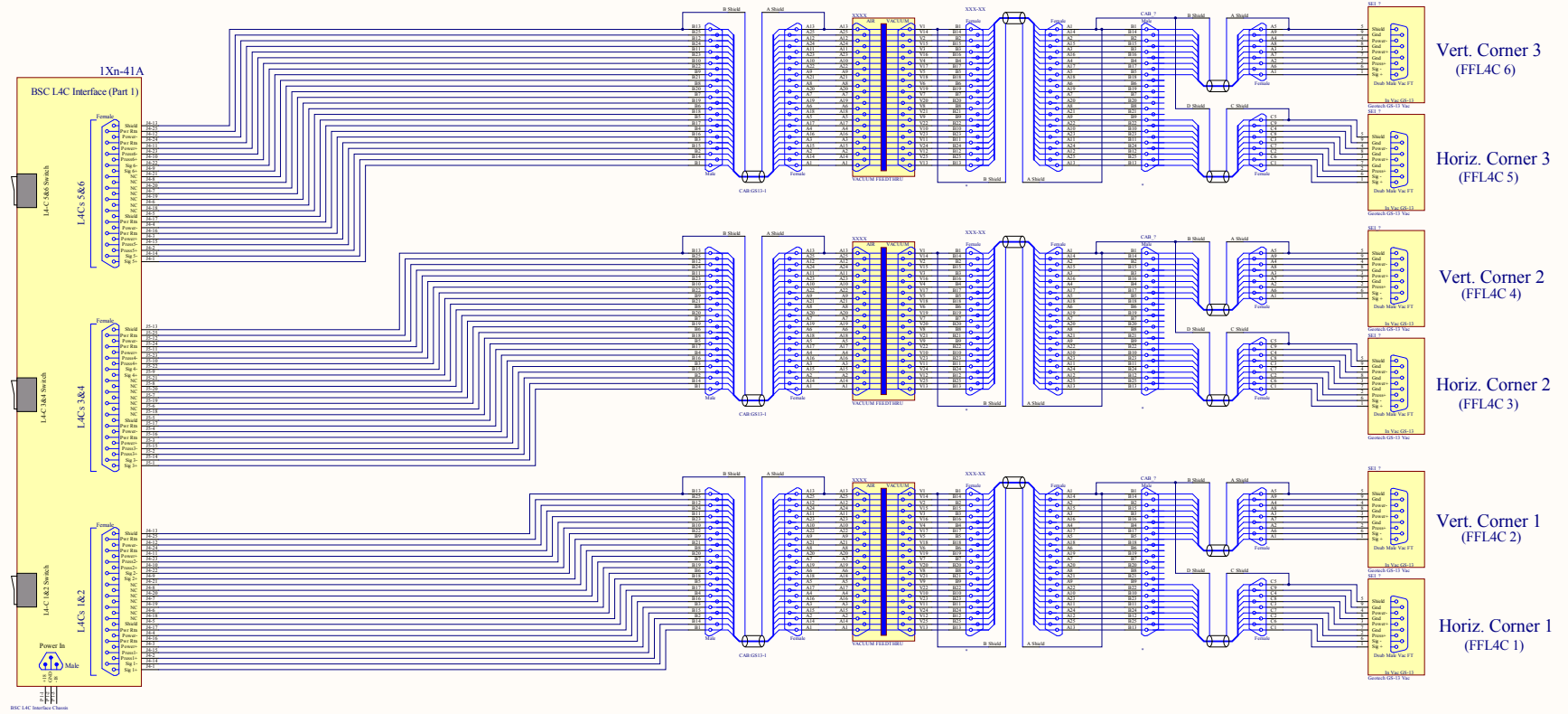
Instrument Corner 2



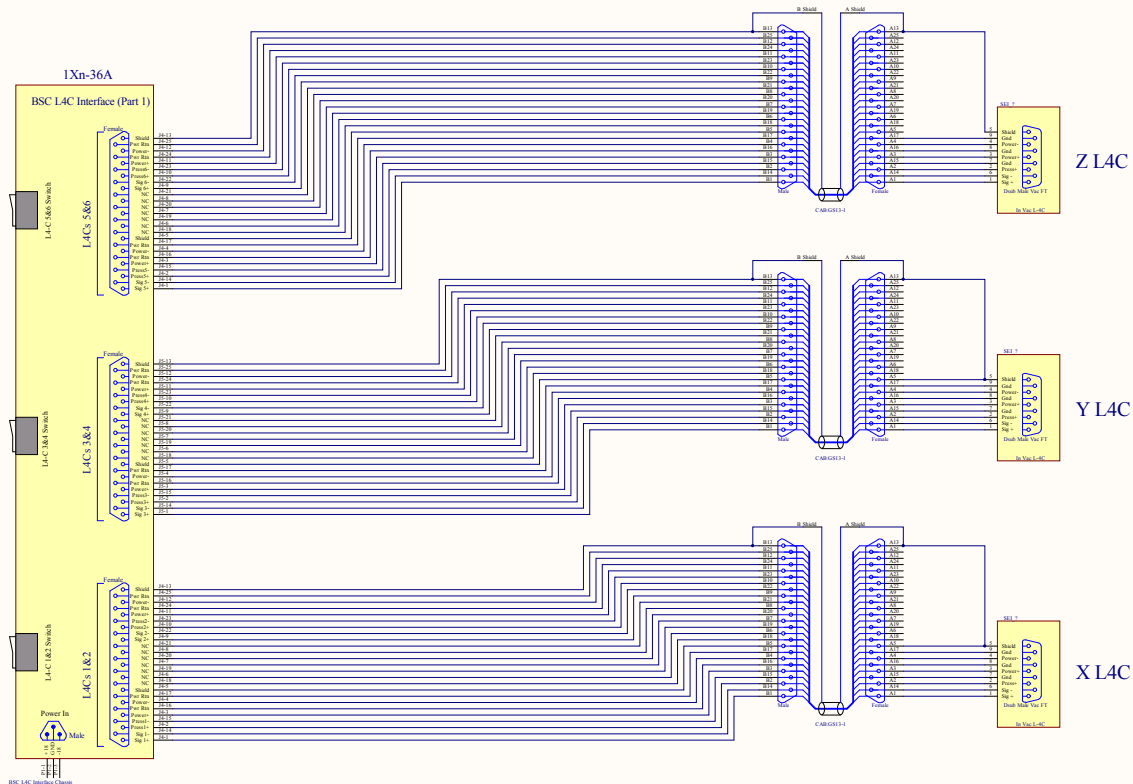
Instrument Corner 3



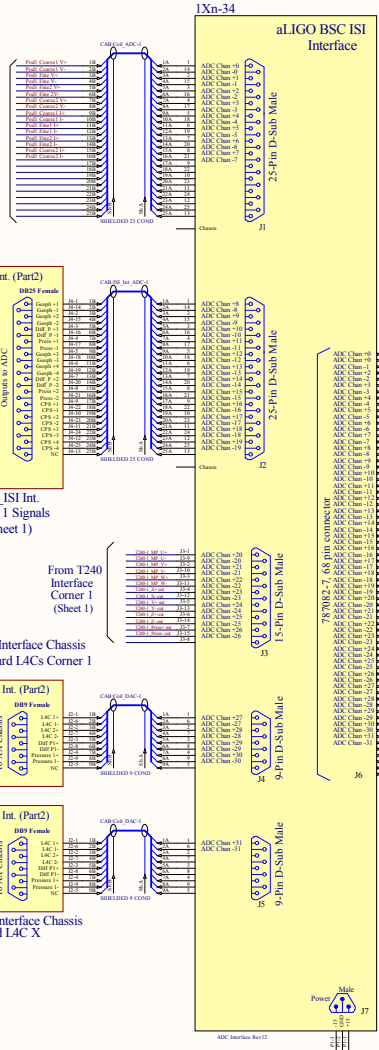
L4C Feed Forward Geophones



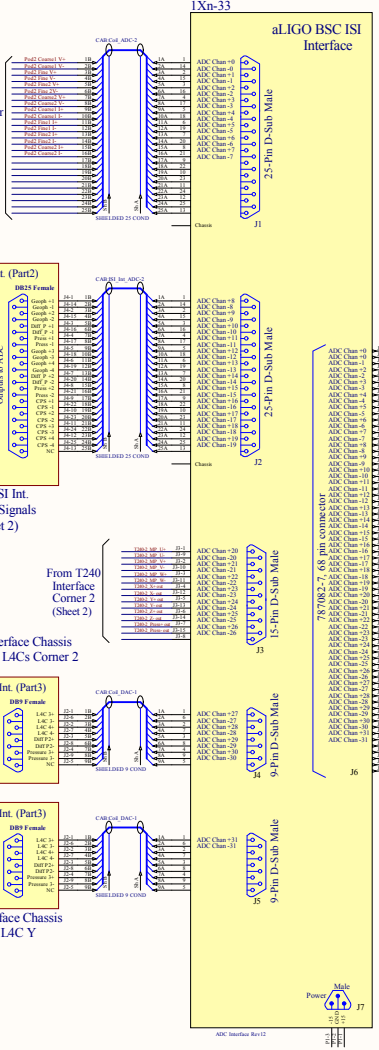
L4C Ground Sense geophones



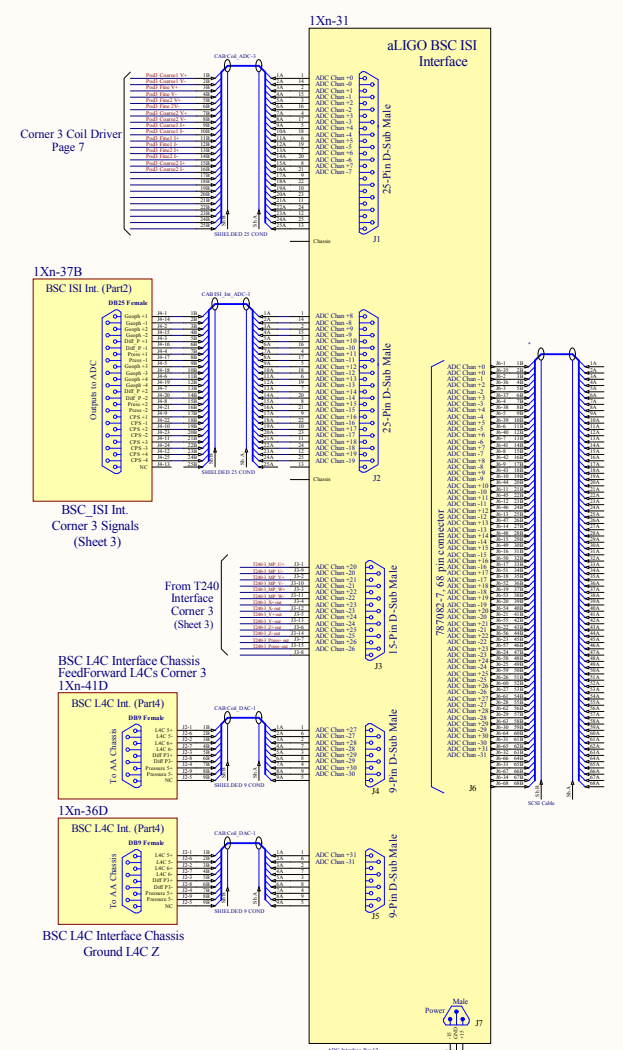
Corner 1 Coil Driver
Page 7

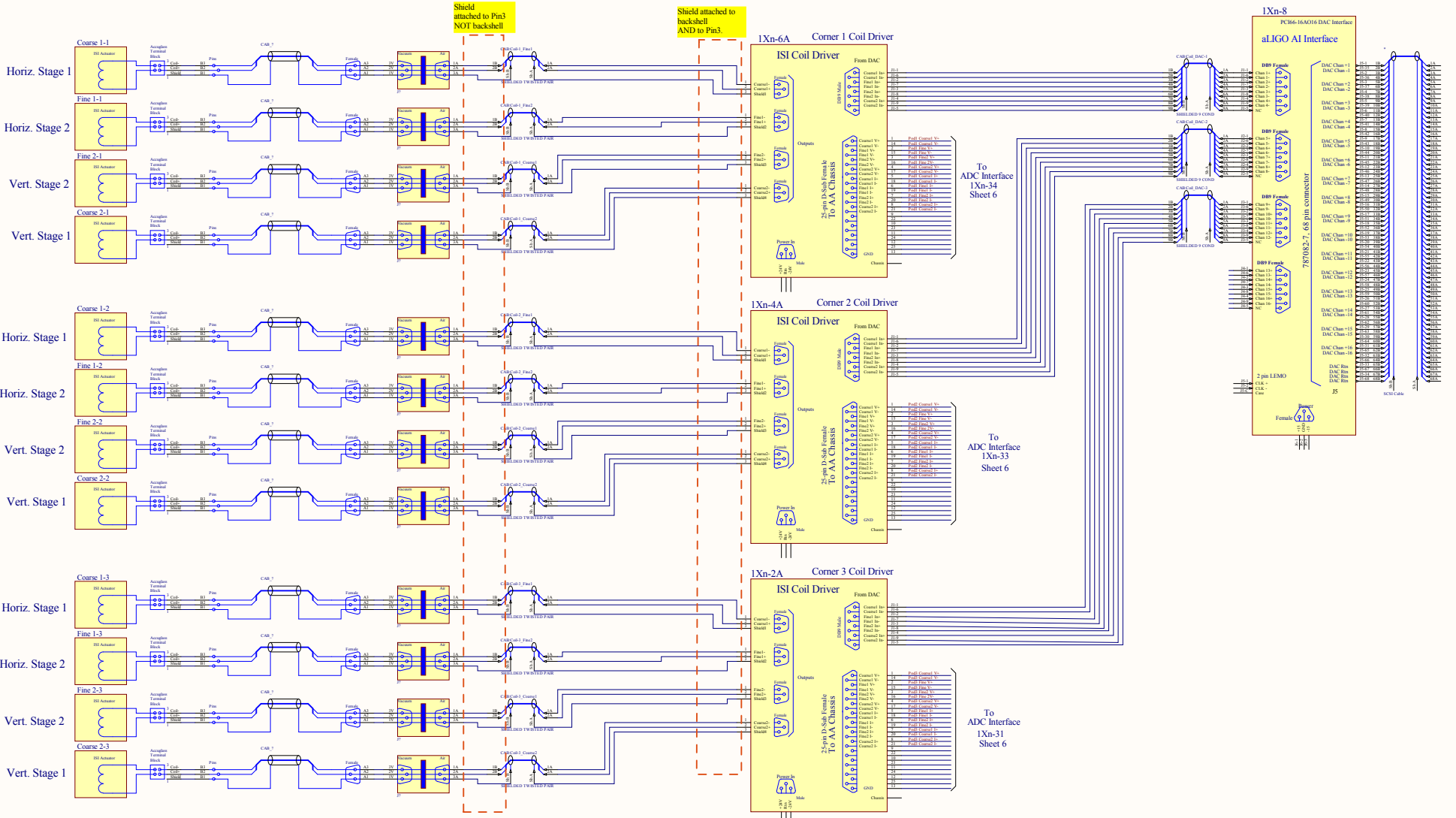


Corner 2 Coil Driver
Page 7



Corner 3 Coil Driver
Page 7





Shield attached to Pin3 NOT backshell

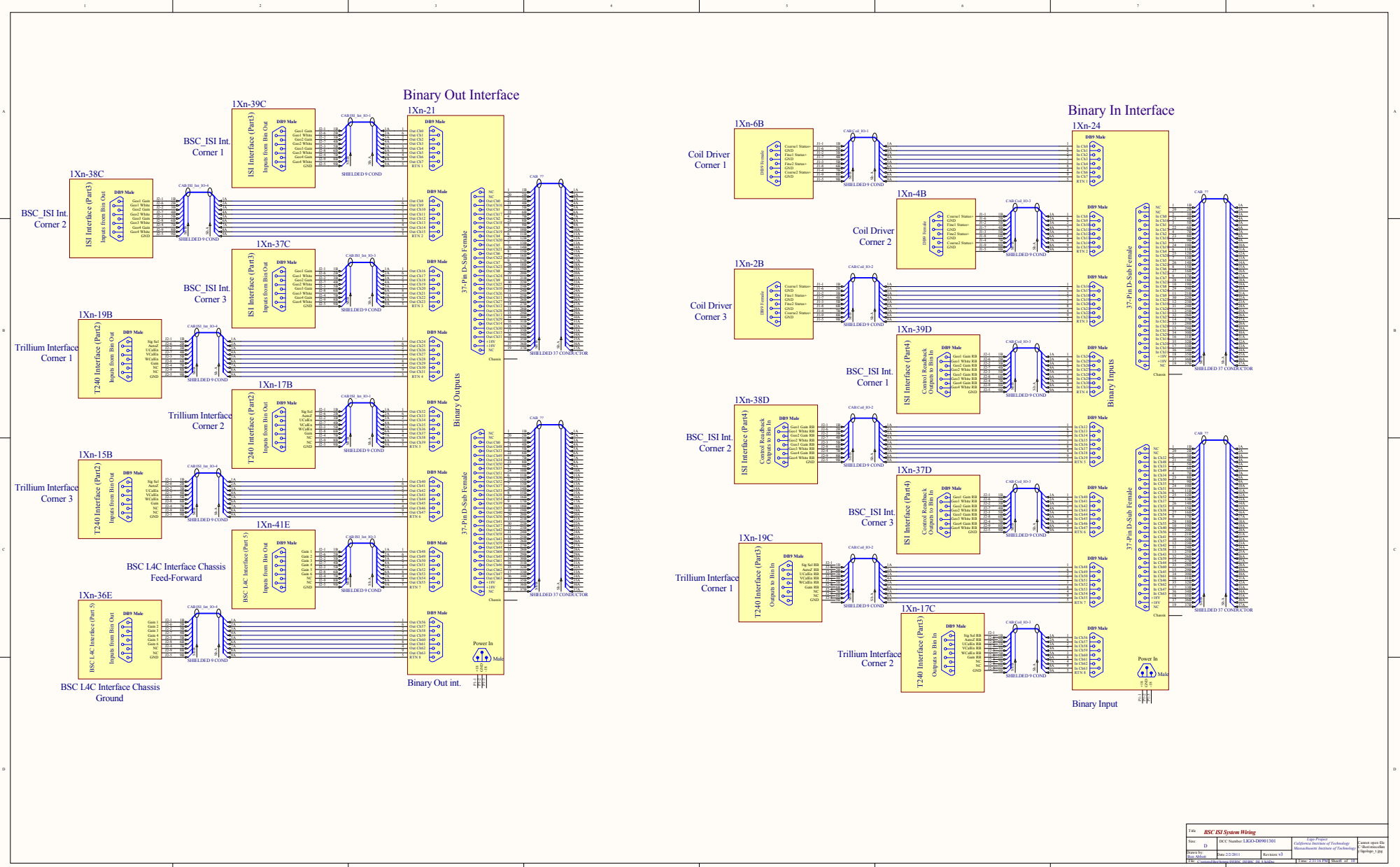
Shield attached to backshell AND to Pin3.

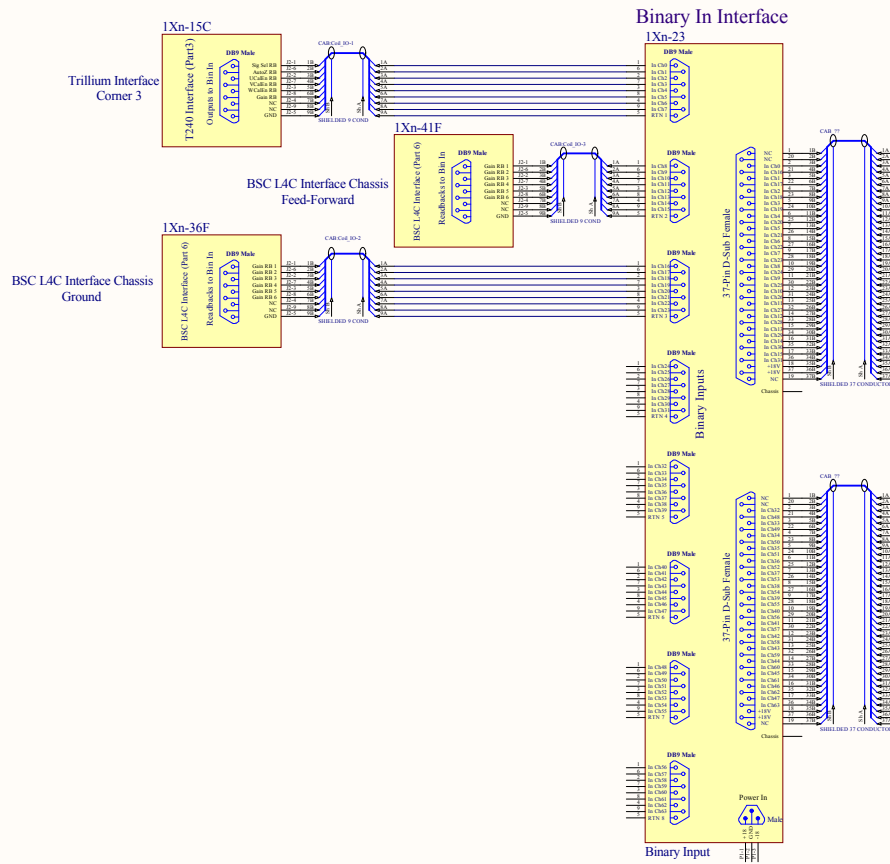
1Xn-8
PCI6-16A018 DAC Interface
aLIGO AI Interface

To ADC Interface
1Xn-34
Sheet 6

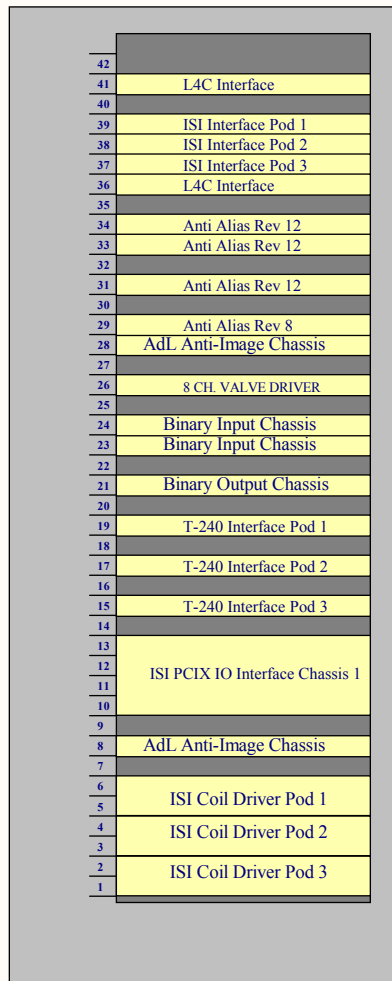
To ADC Interface
1Xn-33
Sheet 6

To ADC Interface
1Xn-31
Sheet 6





BSC 1,2,3,4&5



HEPI Components

Title <i>BSC ISI System Wiring</i>			
Size: B	DCC Number: LIGO-D0901301		<i>Ligo Project</i> <i>California Institute of Technology</i> <i>Massachusetts Institute of Technology</i>
Drawn by: Ben Abbott	Date: 2/2/2011	Revision: v3	
File: C:\restored\Ben\Seismic\ISI\BSC_ISI\BSC_ISI_10_SchDoc			Cannot open file C:\Ben\miscellan\y\ligologo_1.jpg
Time: 2:31:16 PM			Sheet 10 of 10