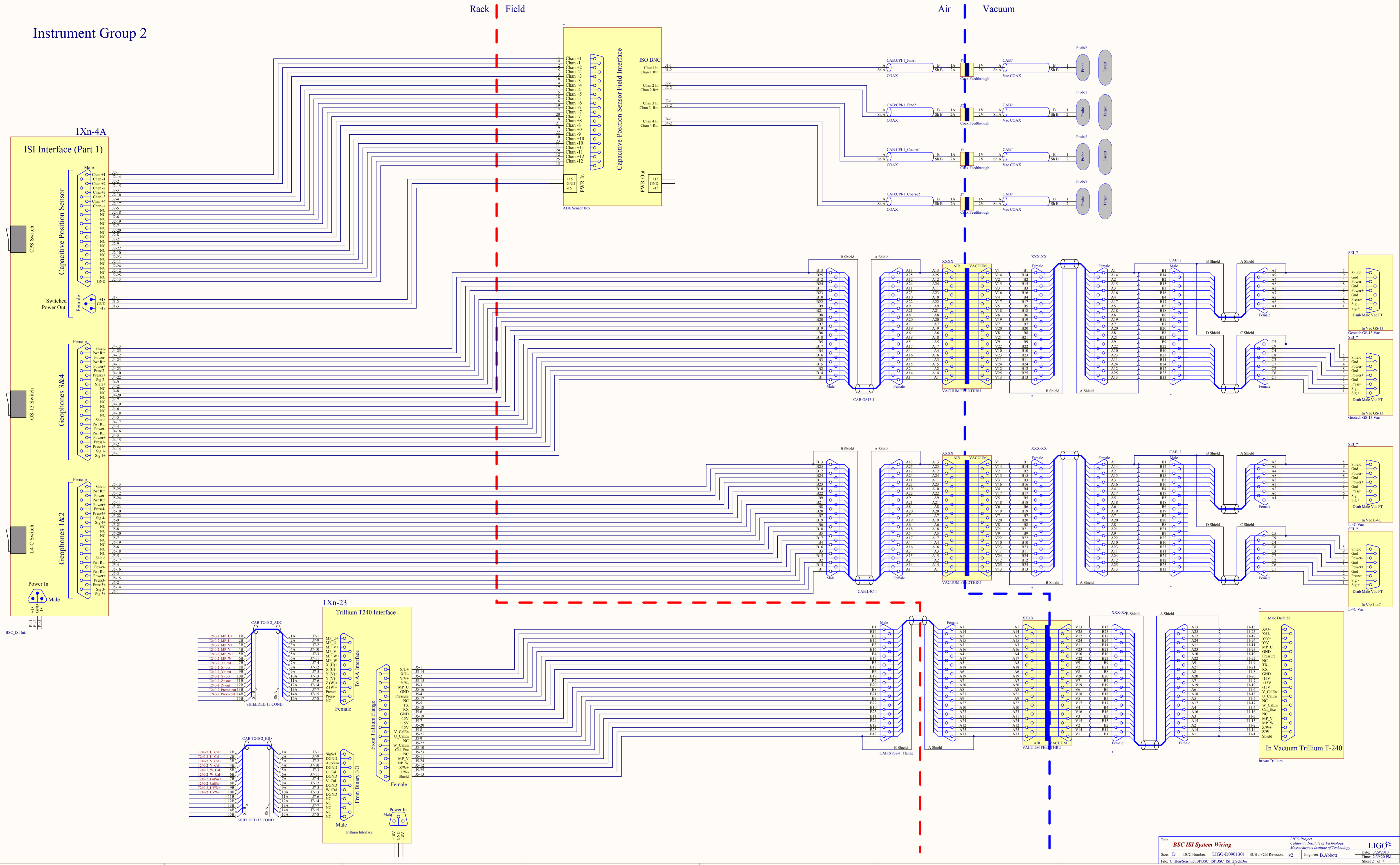


Instrument Group 2



Instrument Group 3

1Xn-5A

ISI Interface (Part 1)

CPS Switch

Capacitive Position Sensor

Switched Power Out

GS-13 Switch

Geophones 3&4

L-4-C Switch

Geophones 1&2

Power In

ISI Interface

ISI Interface

ISI Interface

ISI Interface

ISI Interface

ISI Interface

ISI Interface

ISI Interface

ISI Interface

ISI Interface

ISI Interface

ISI Interface

ISI Interface

ISI Interface

ISI Interface

ISI Interface

ISI Interface

ISI Interface

ISI Interface

ISI Interface

ISI Interface

ISI Interface

ISI Interface

ISI Interface

ISI Interface

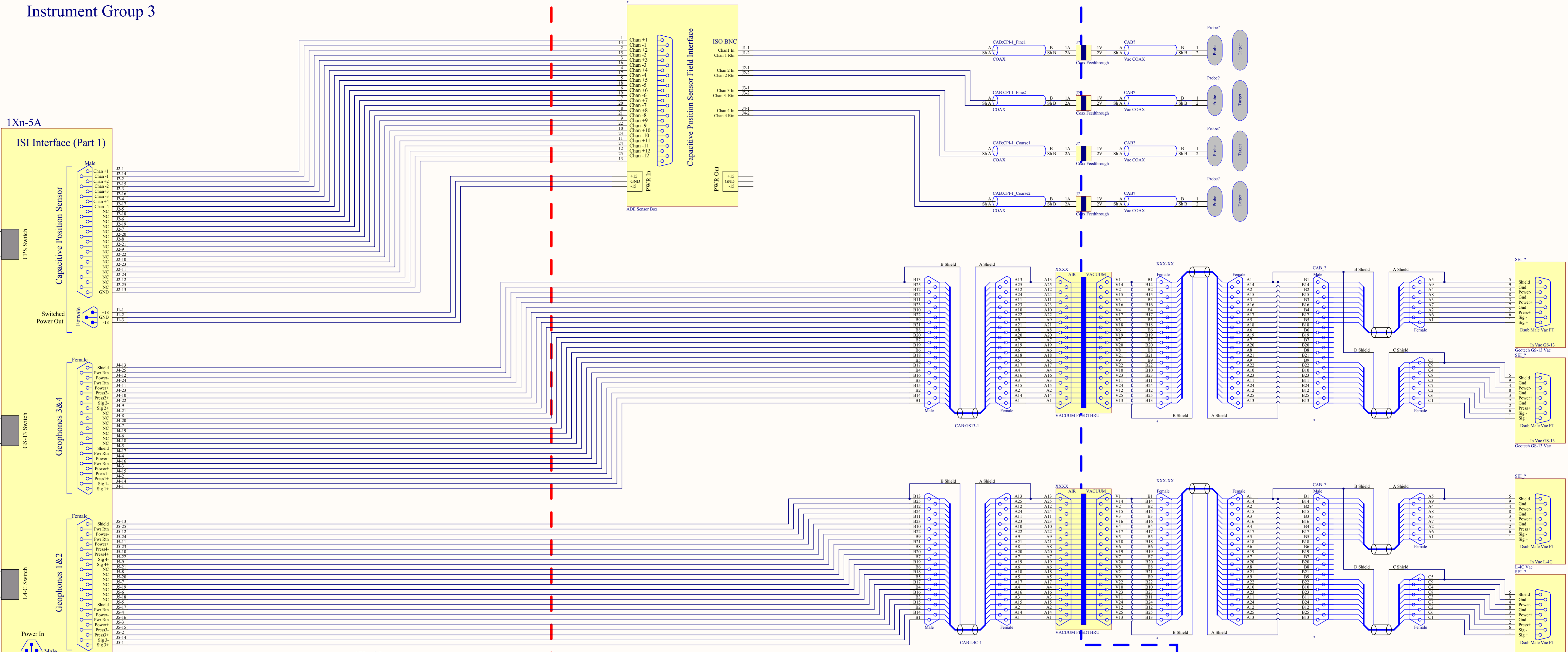
ISI Interface

ISI Interface

ISI Interface

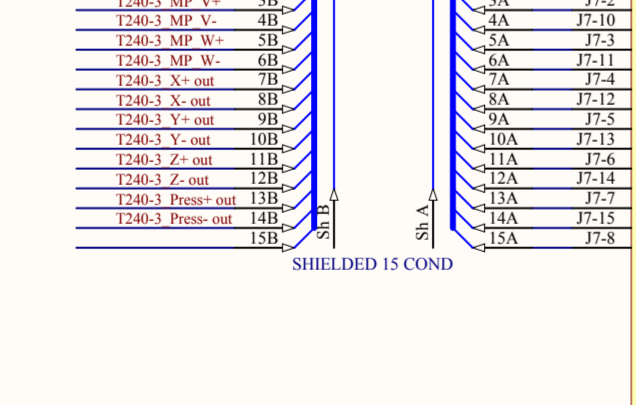
Rack | Field

Air | Vacuum

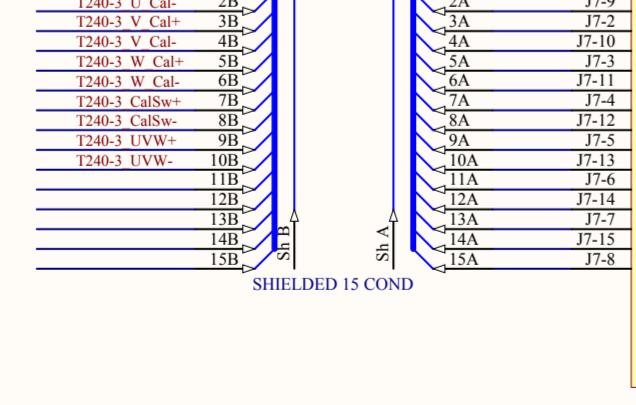


1Xn-25

CAB-T240-3-ADC

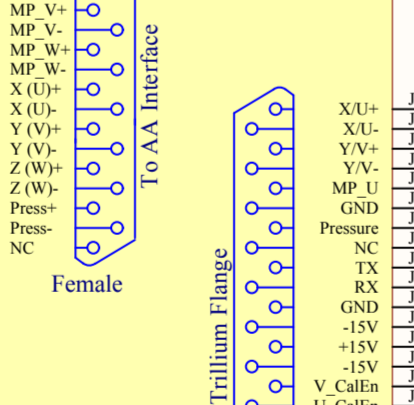


CAB-T240-3-BIO

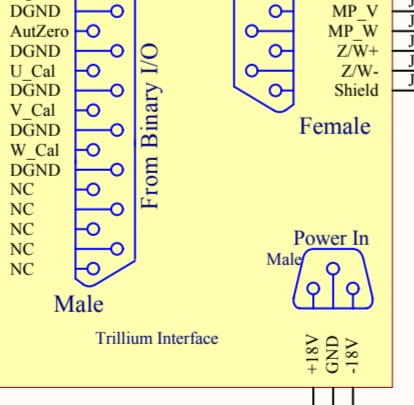


Trillium T240 Interface

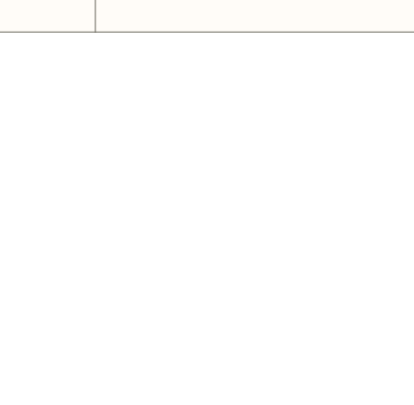
To AAX Interface



From Trillium Flange

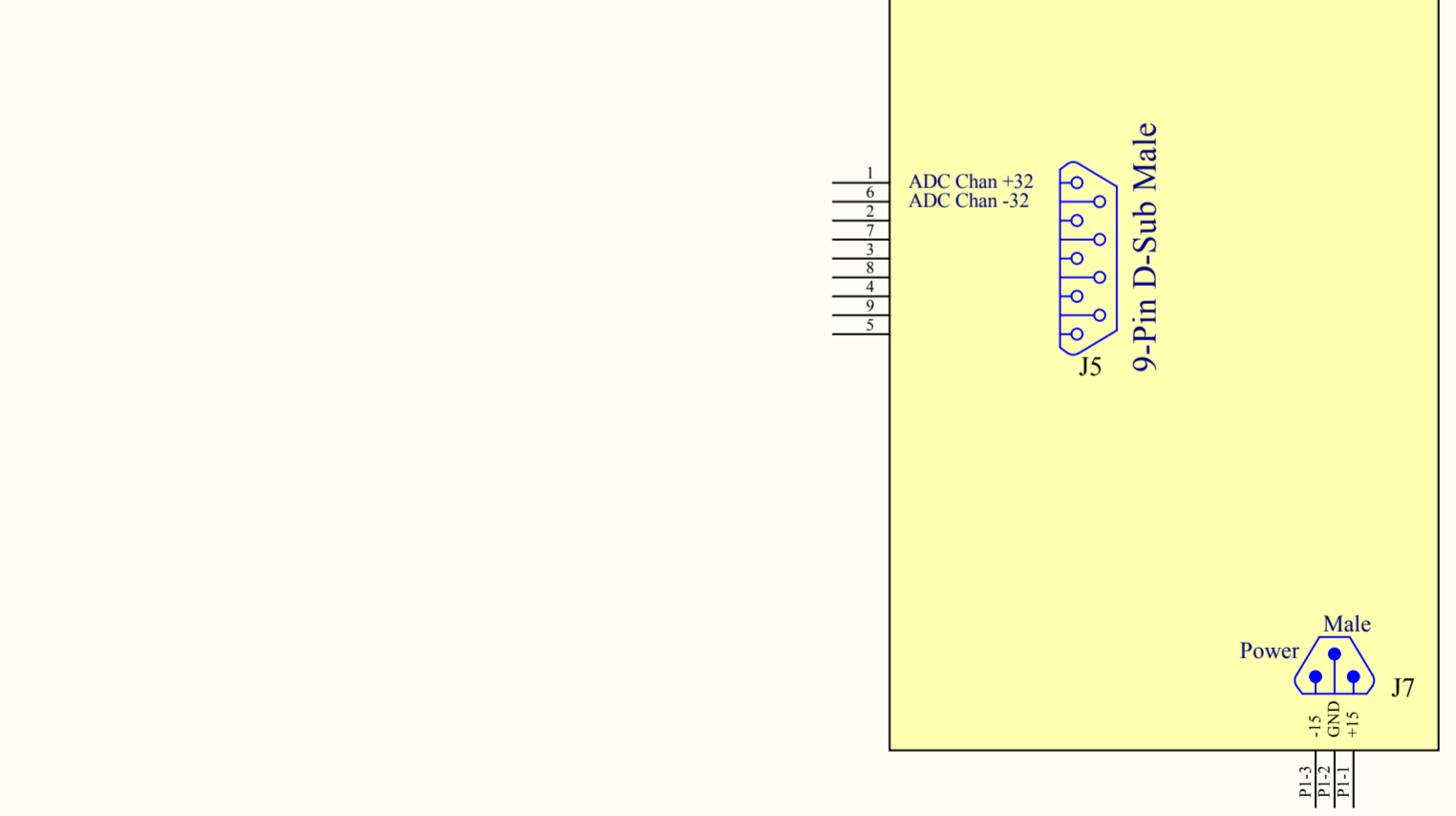
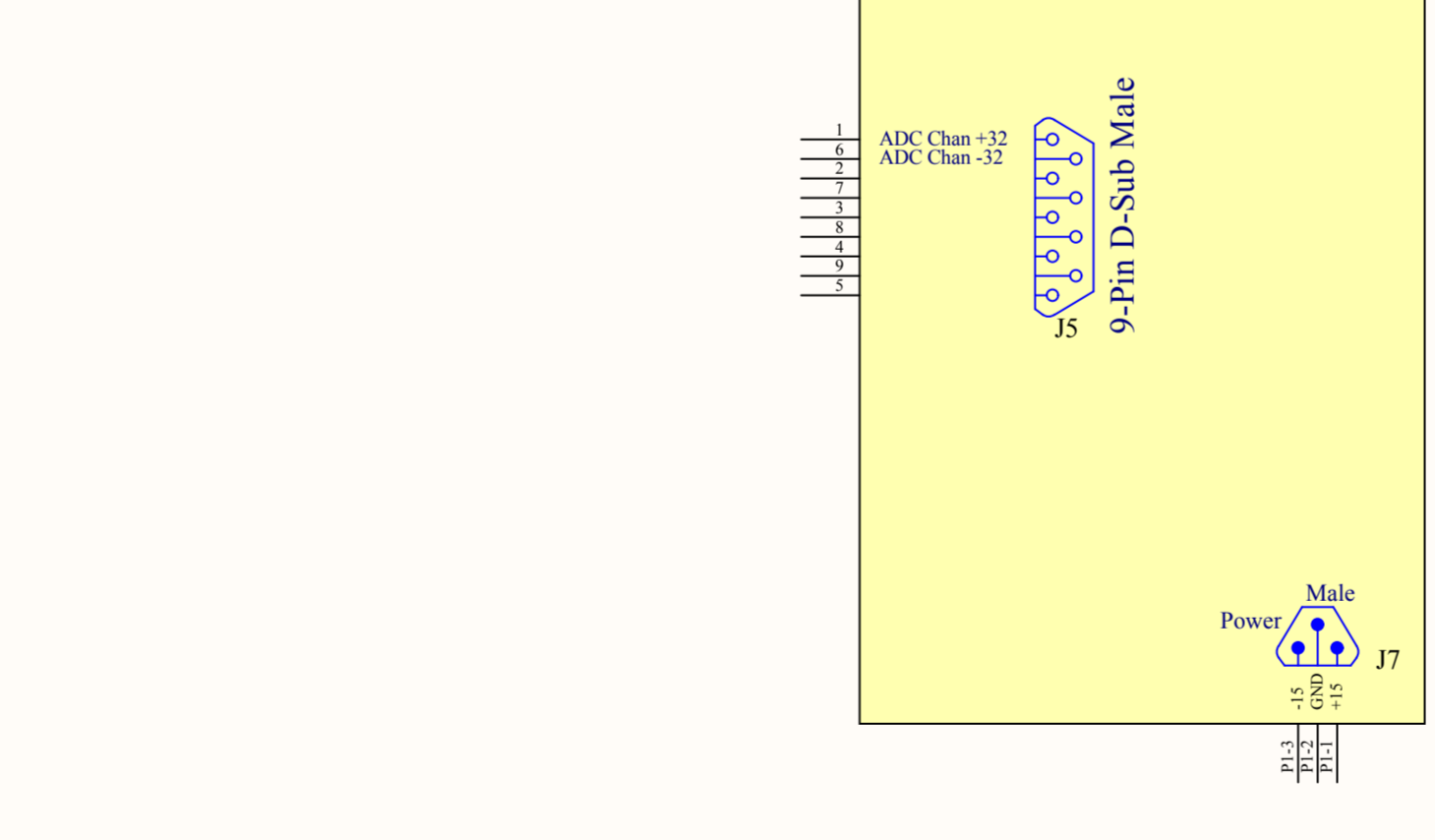
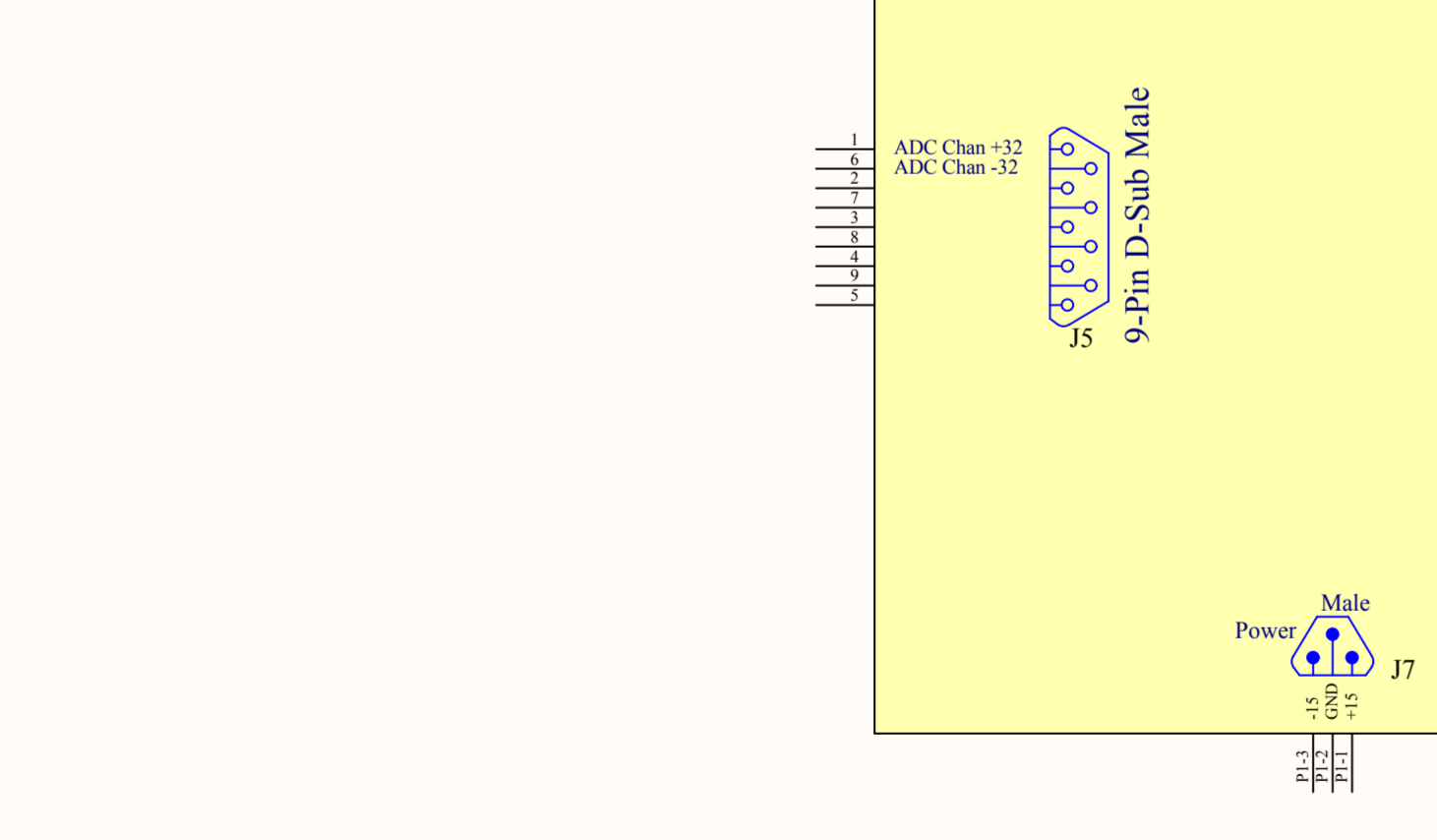
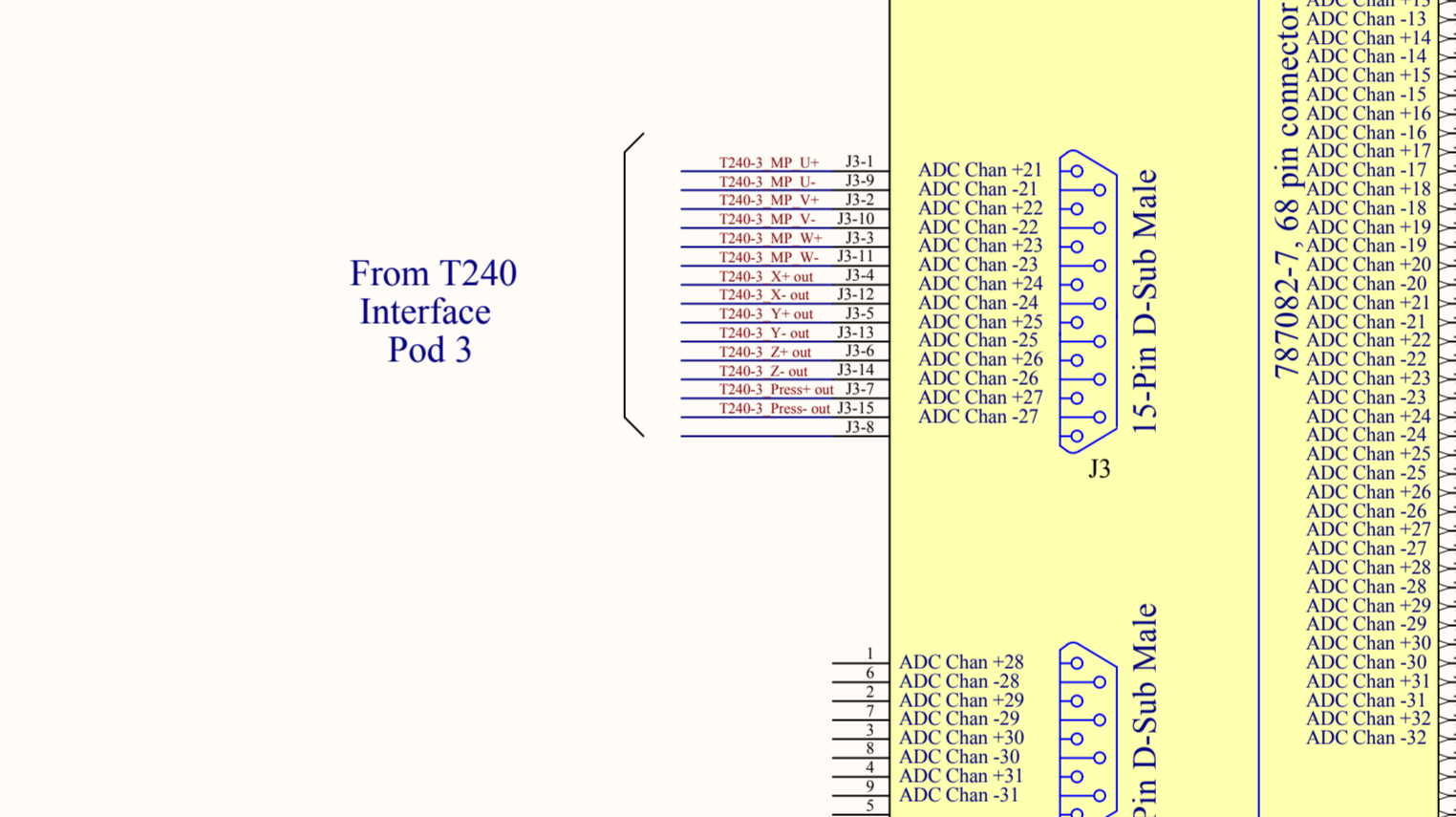
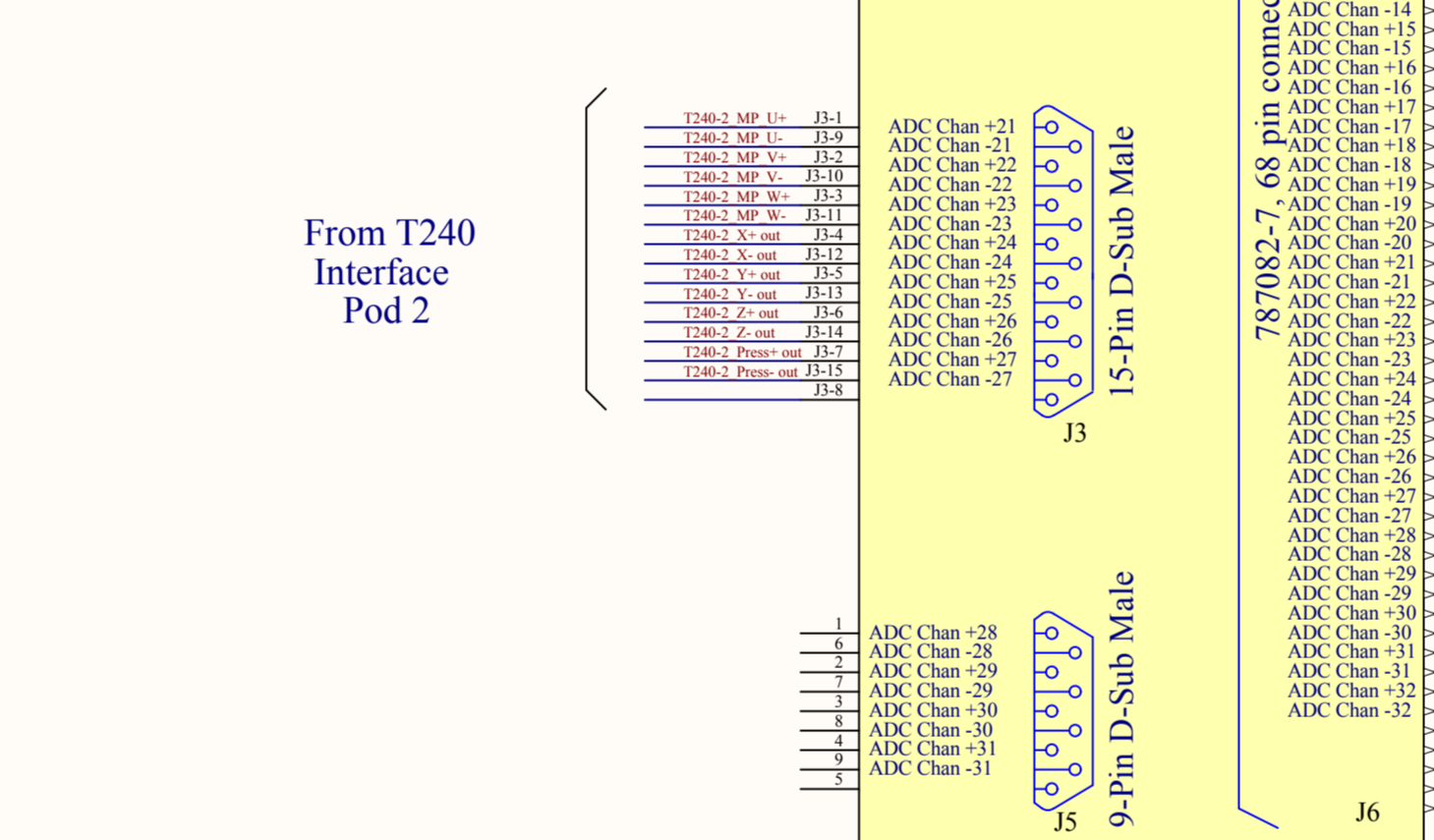
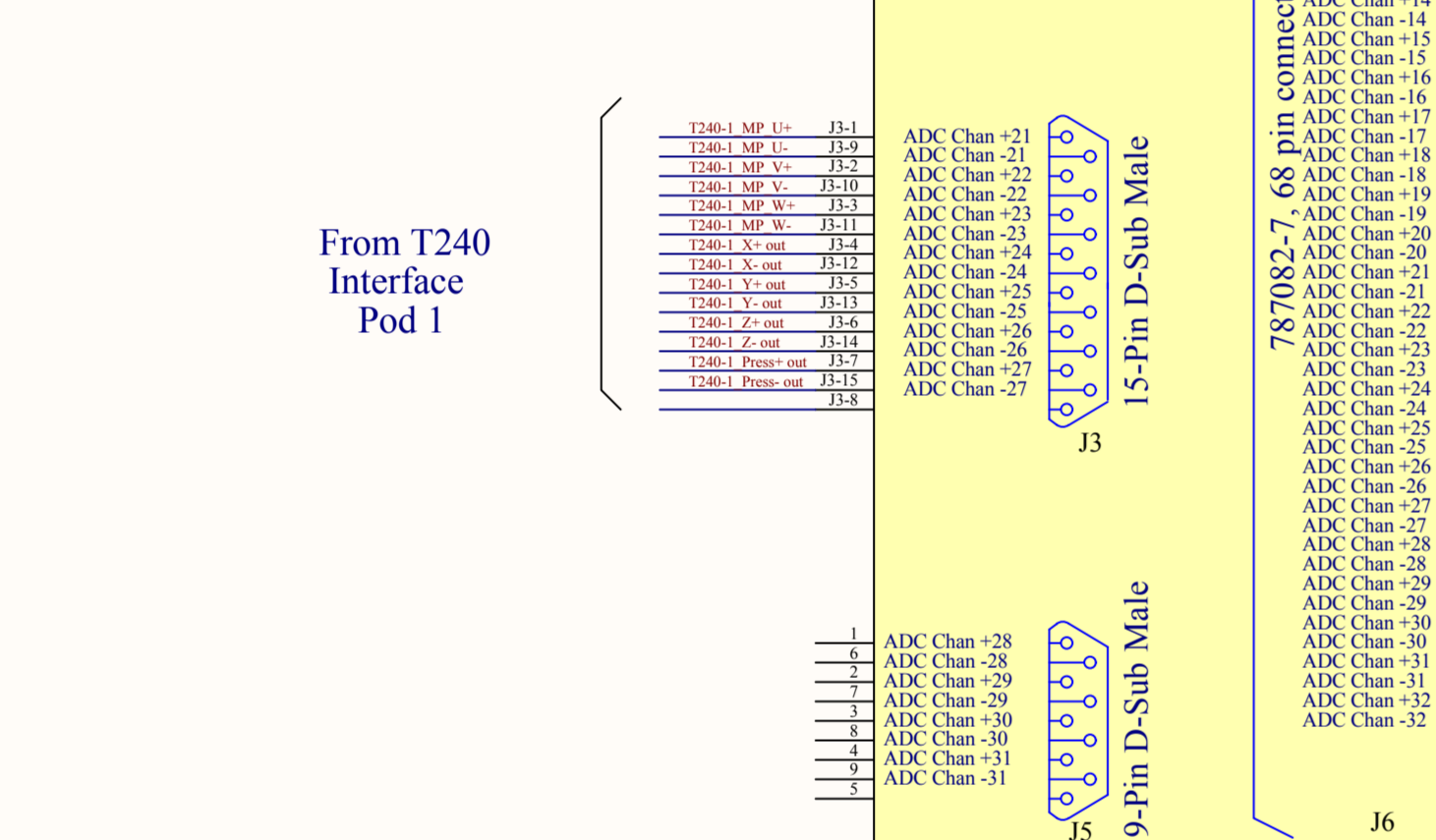
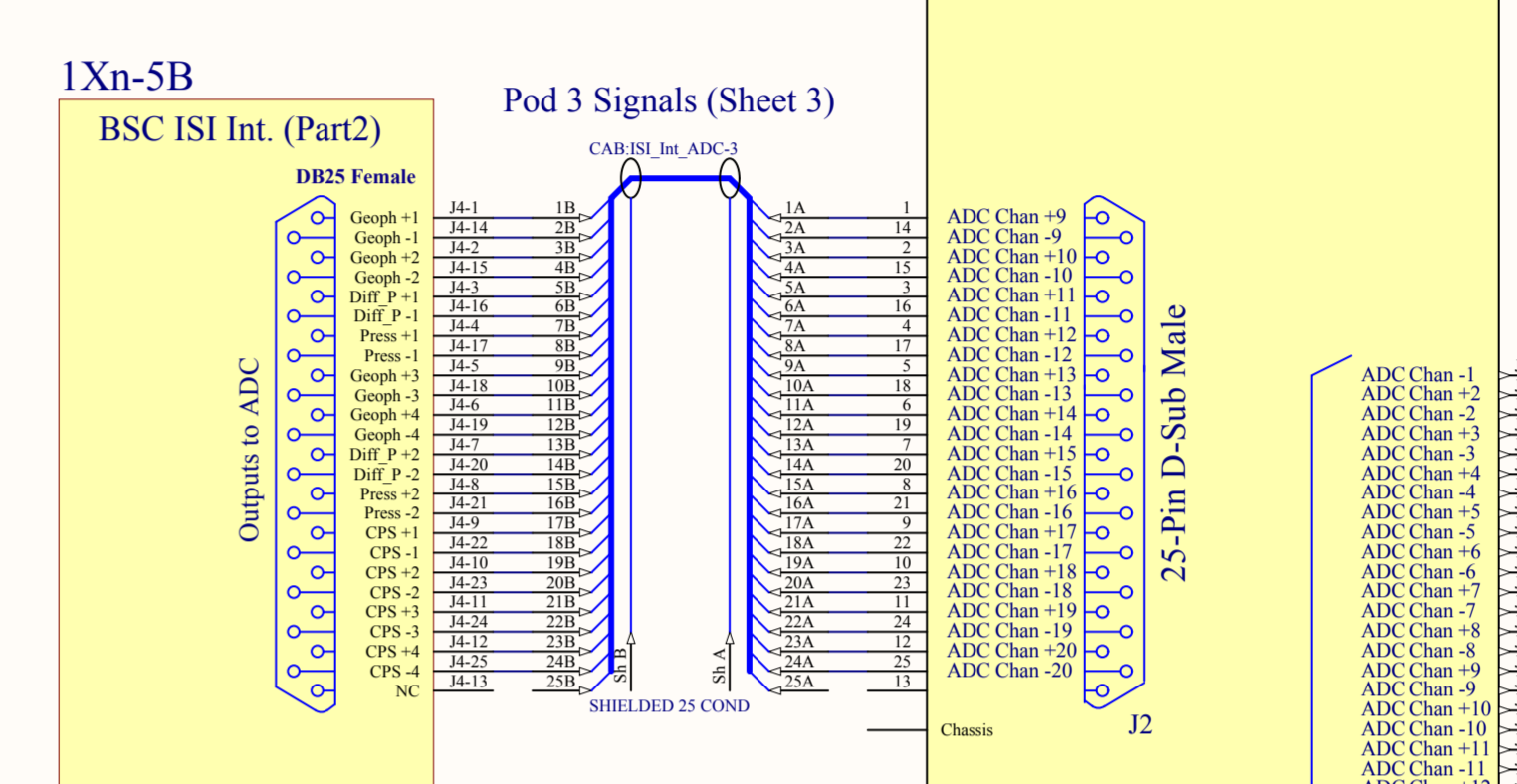
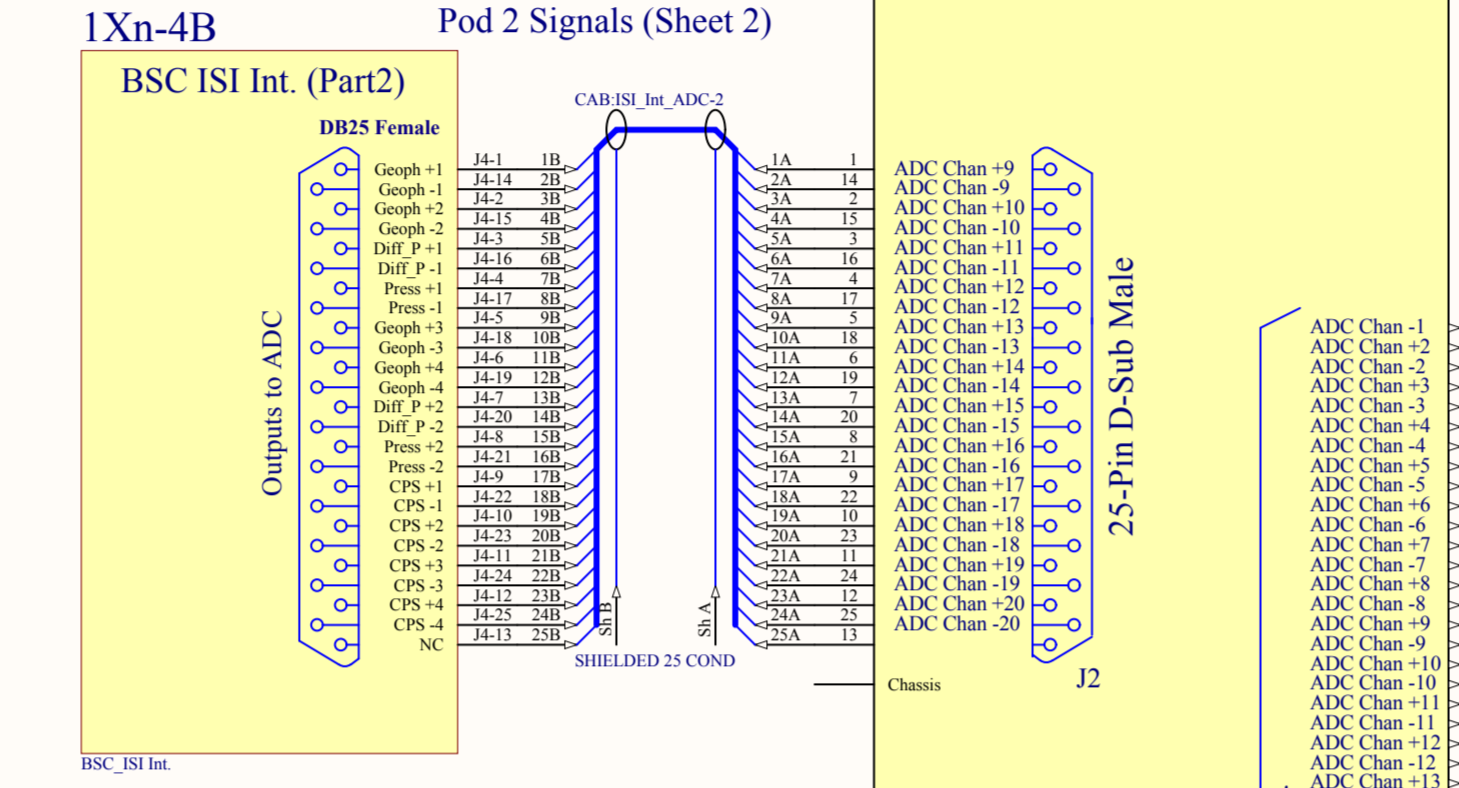
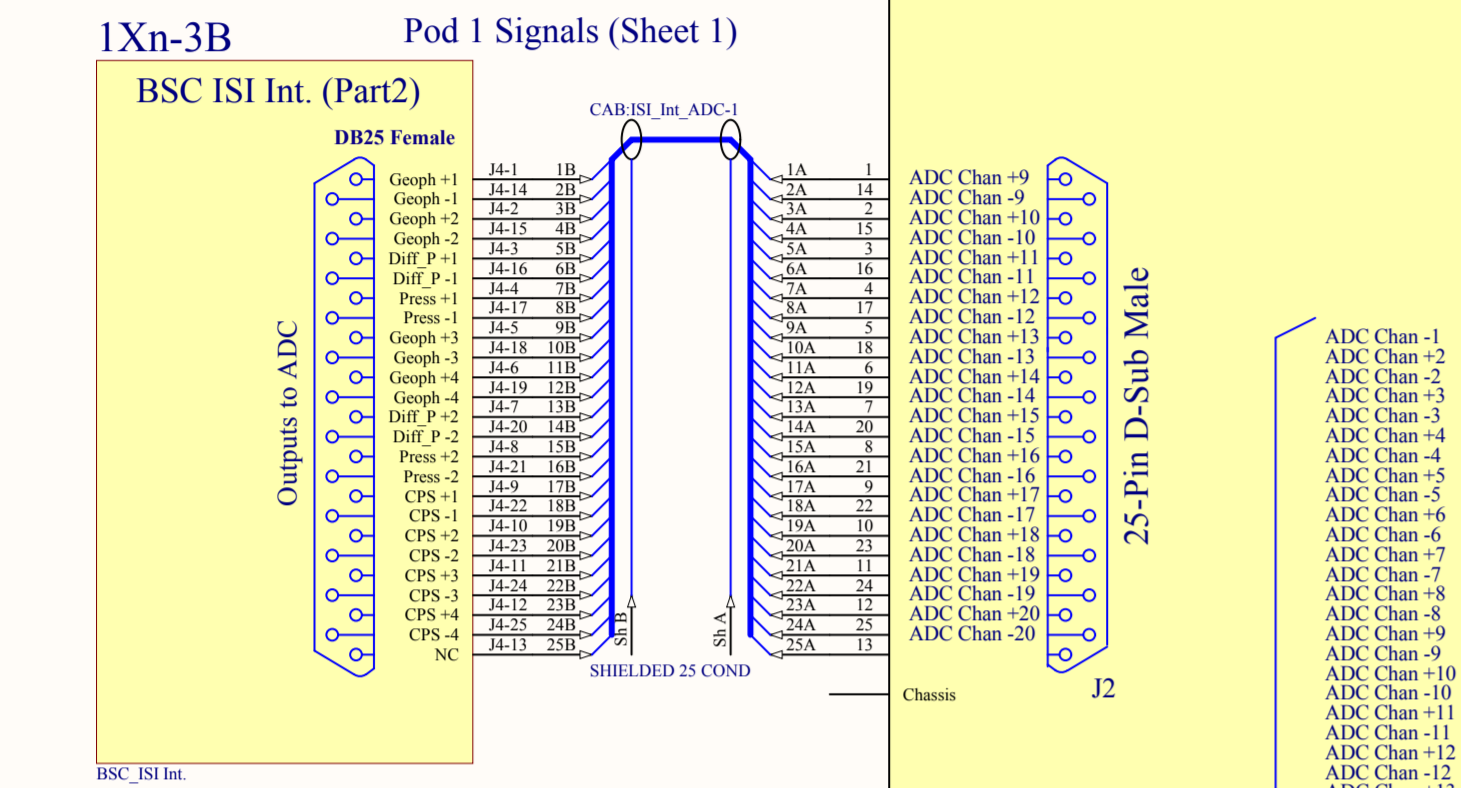
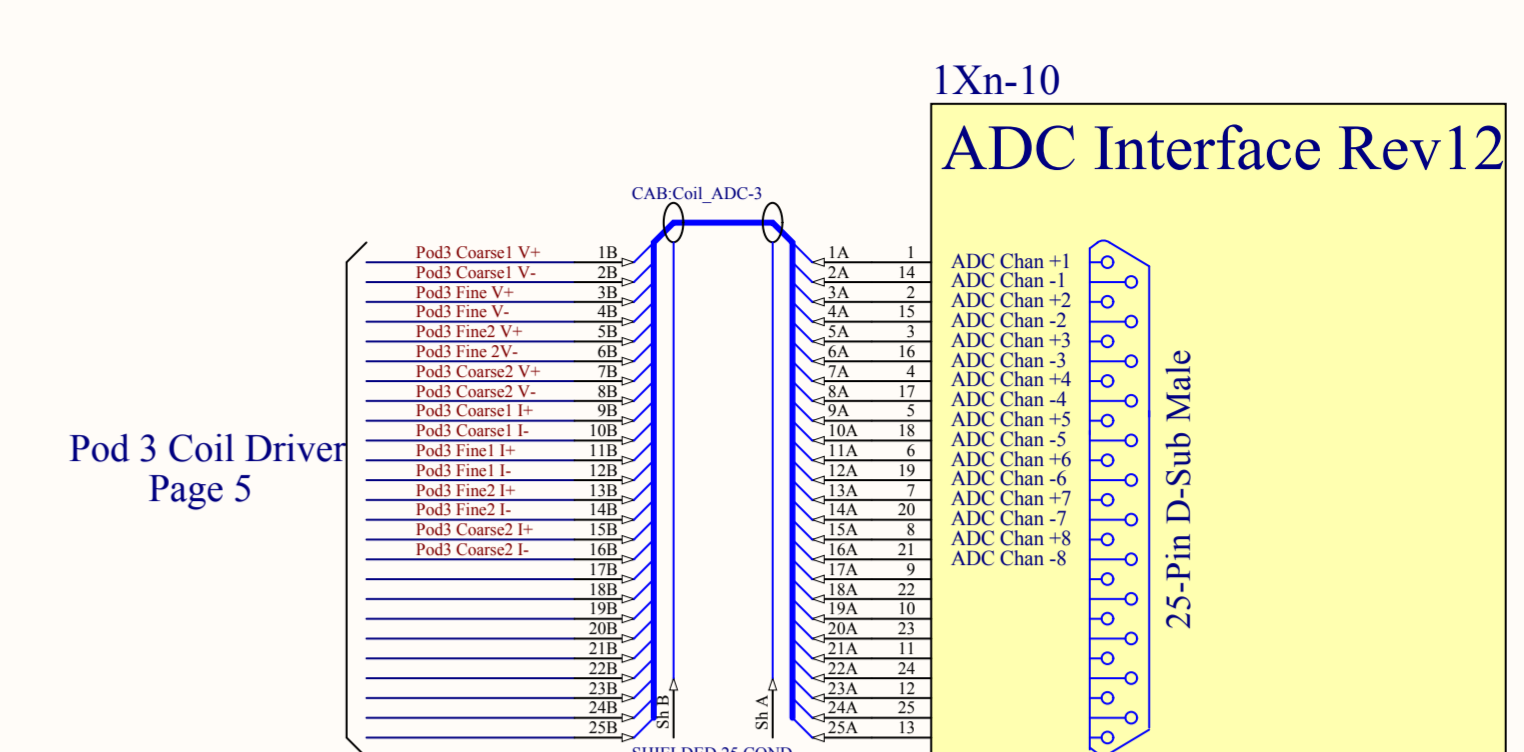
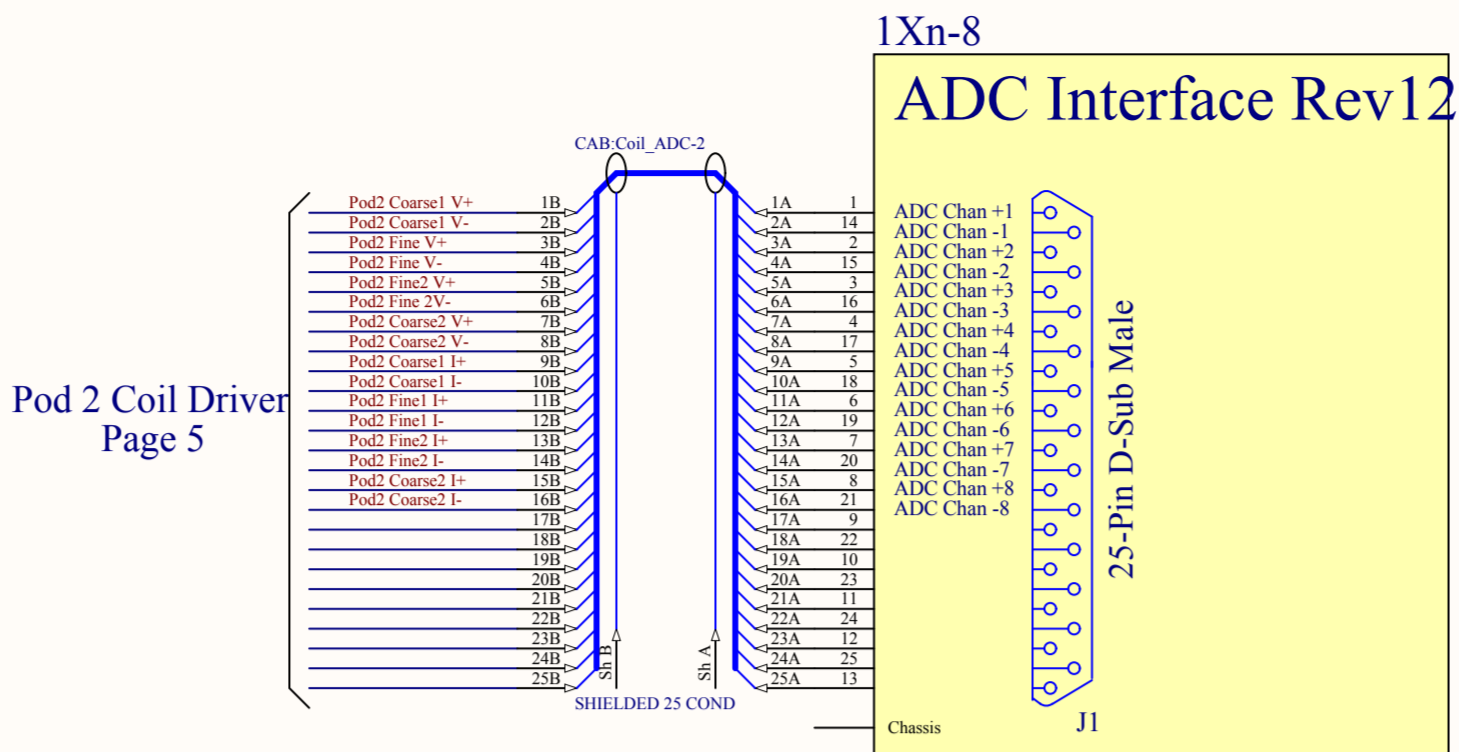
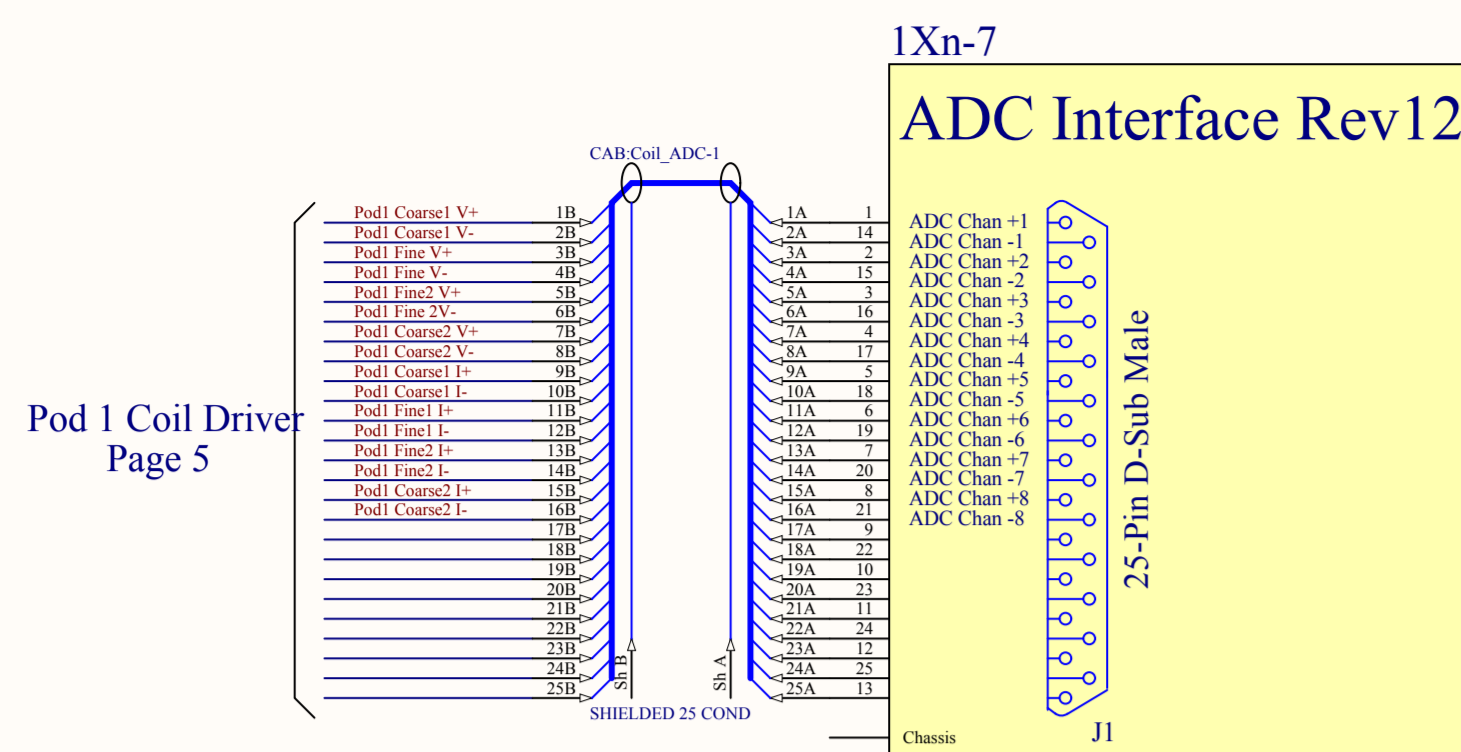


From Binary I/O

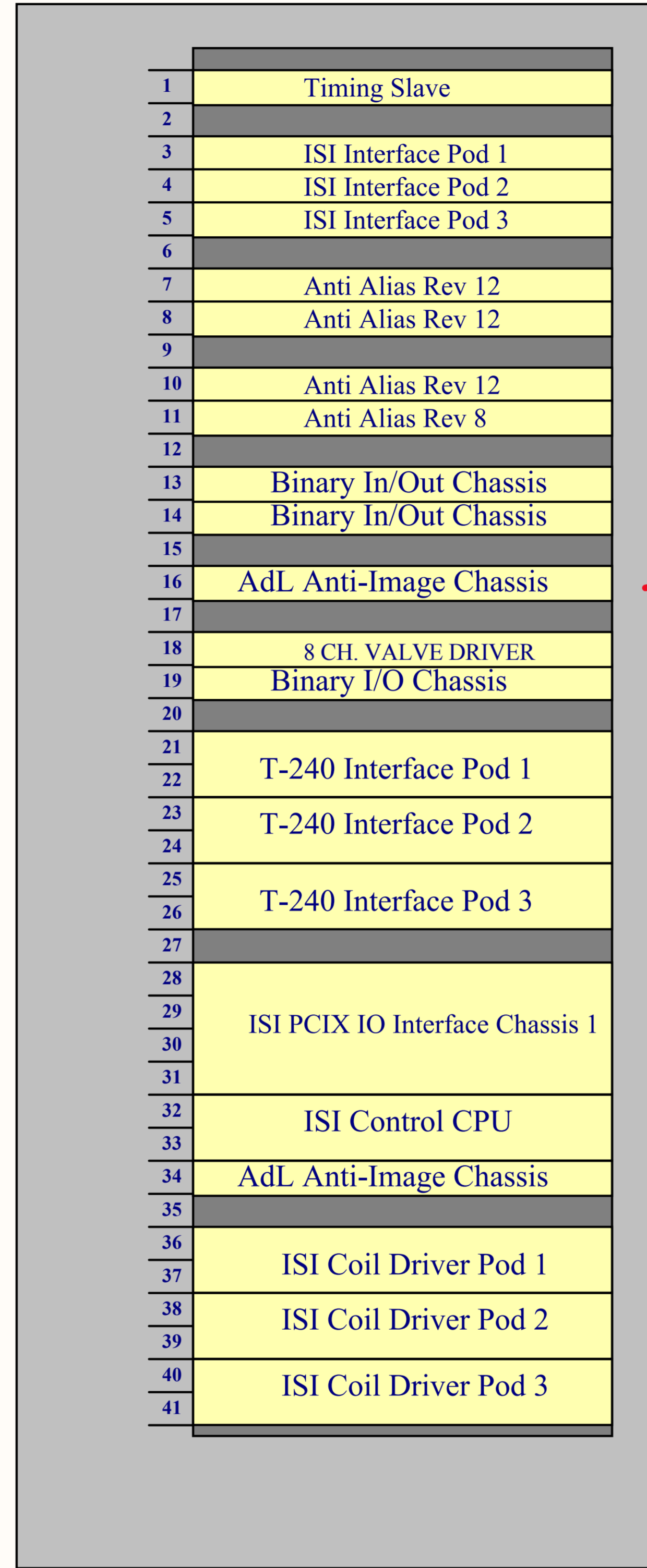


Power In






1Xn



HEPI Components

| | | | |
|---|---------------------------|--------------|--|
| Title BSC ISI System Wiring | | | |
| Size: B | DCC Number: LIGO-D0901301 | | <i>Ligo Project</i> <i>California Institute of Technology</i> <i>Massachusetts Institute of Technology</i>  |
| Drawn by: Ben Abbott | Date: 3/29/2010 | Revision: v2 | |
| File: C:\Ben\Seismic\ISI\BSC_ISI\BSC_ISI_7.SchDoc | | | Time: 2:39:22 PM Sheet 7 of 7 |