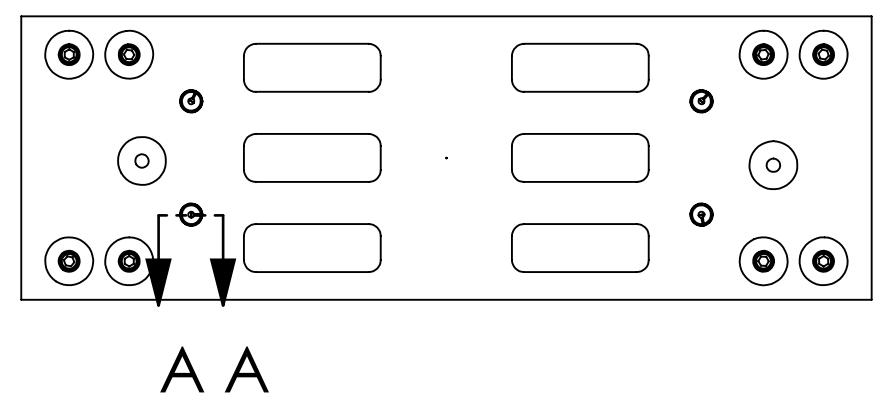
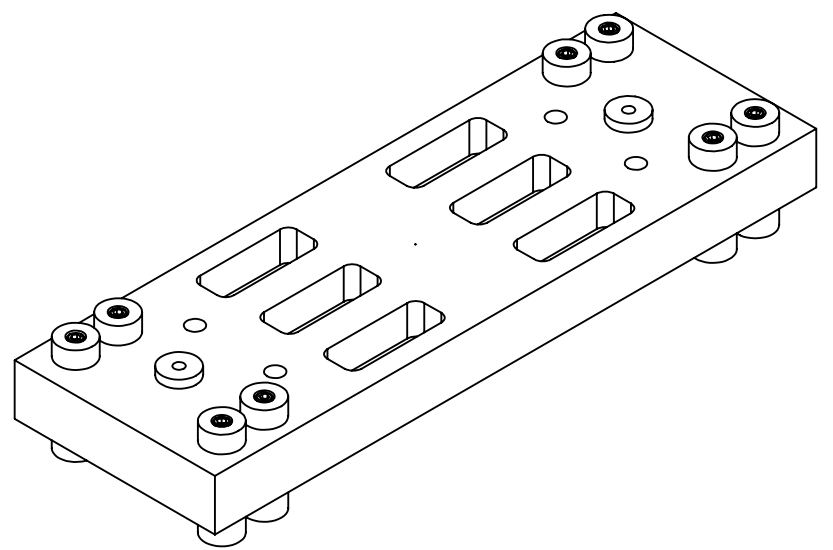
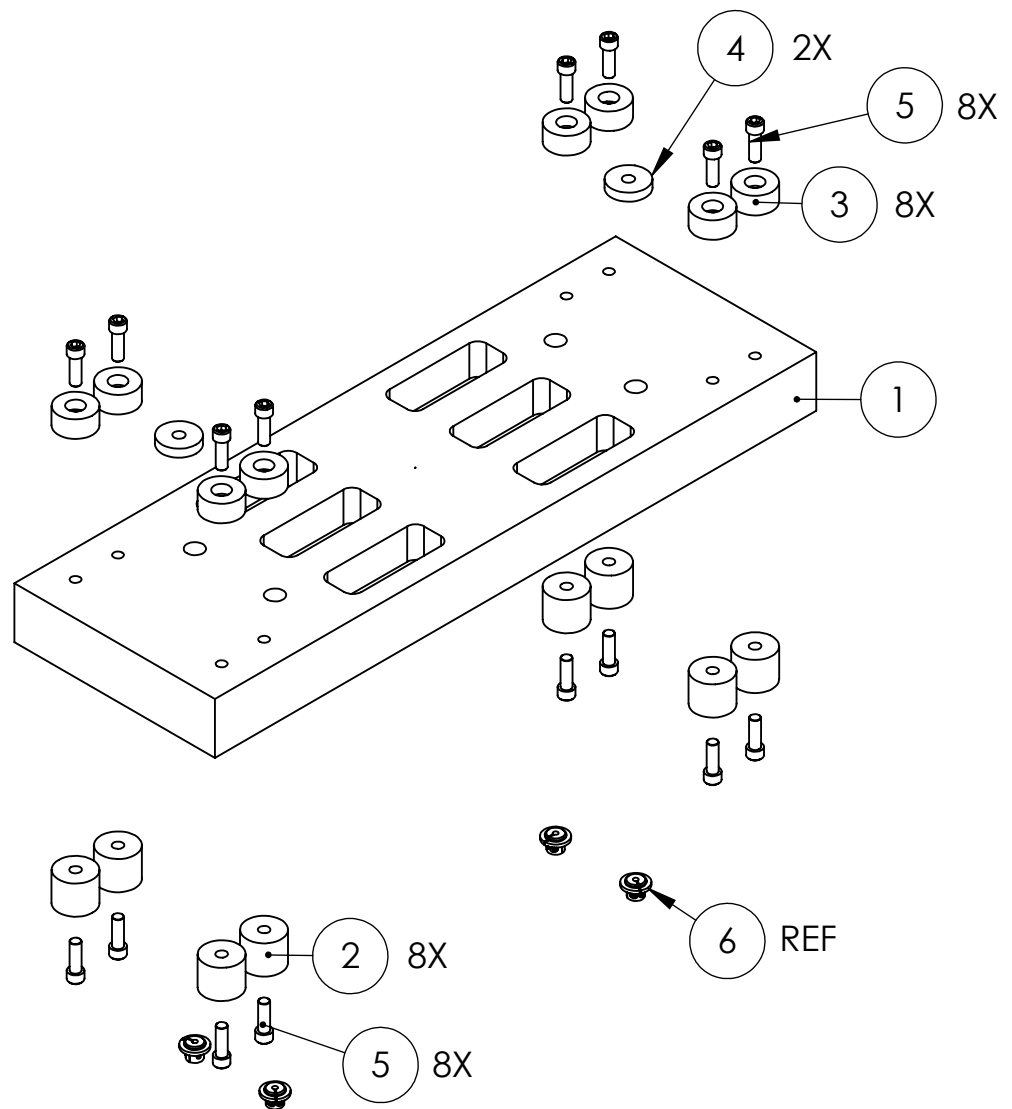
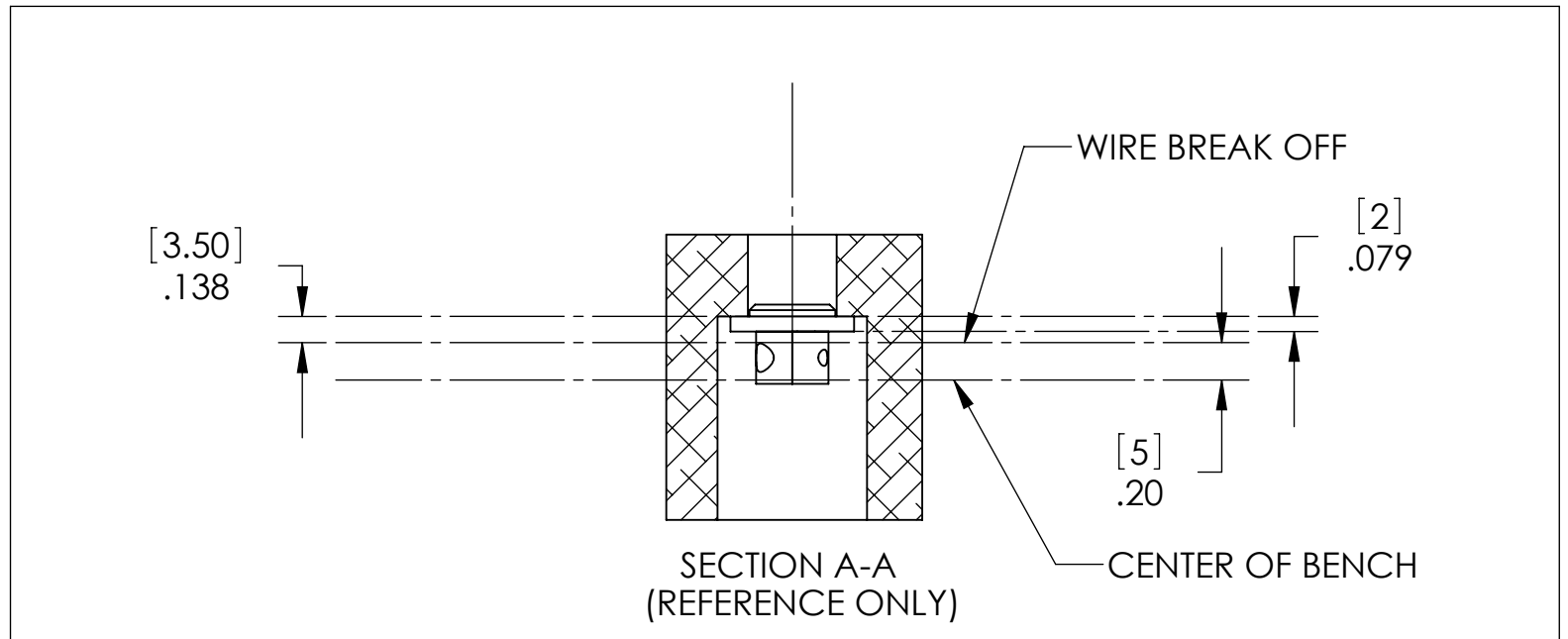


REV.	DATE	DCN #	DRAWING TREE #
A	9 FEB 2007	E070025-00-D	
B	20 JUL 2007	E070186-00-D	
C	18 MAR 2008	E080111	

D
C
B
A



ITEM NO.	REQ	SPARE	TOTAL	PART NUMBER	DESCRIPTION	MATERIAL
6	REF		REF	D070067	LOWER CLAMP WIRE CLAMP ASSEMBLY	--
5	16		16	--	SST SOCKET HEAD CAP SCREW 0.25-20 UNC-2A X 0.75 LONG	300 SSTL
4	2	4	6	D030078	UPPER MASS 20g ADD ON MASS	304 SSTL
3	8	4	12	D020351	UPPER MASS 50g ADD ON MASS	304 SSTL
2	8	4	12	D020350	UPPER MASS 100g ADD ON MASS	304 SSTL
1	1		1	D070027	METAL DUMMY OPTICAL BENCH	6061-T6-AI



PARTS LIST

NOTES: (UNLESS OTHERWISE SPECIFIED)
 DIMENSIONS ARE IN INCHES [mm]
 TOLERANCES:
 .XX ± 0.01
 .XXX ± 0.005
 ANGULAR ± 0.5°
 MATERIAL: --
 FINISH: --

DRAWN	CHECKED	APPROVED	NAME	DATE
			C. TORRIE	7 FEB 2007
			D. BRIDGES	

SYSTEM: ADVANCED LIGO
 SUB-SYSTEM: SUSPENSIONS
 NEXT ASSY: OMC
 PART NAME: METAL BENCH ASSEMBLY
 SIZE DWG. NO.: B D070035
 SCALE: NTS PROJECTION: SHEET 1 OF 1

8 7 6 5 4 3 2 1

8 7 6 5 4 3 2 1