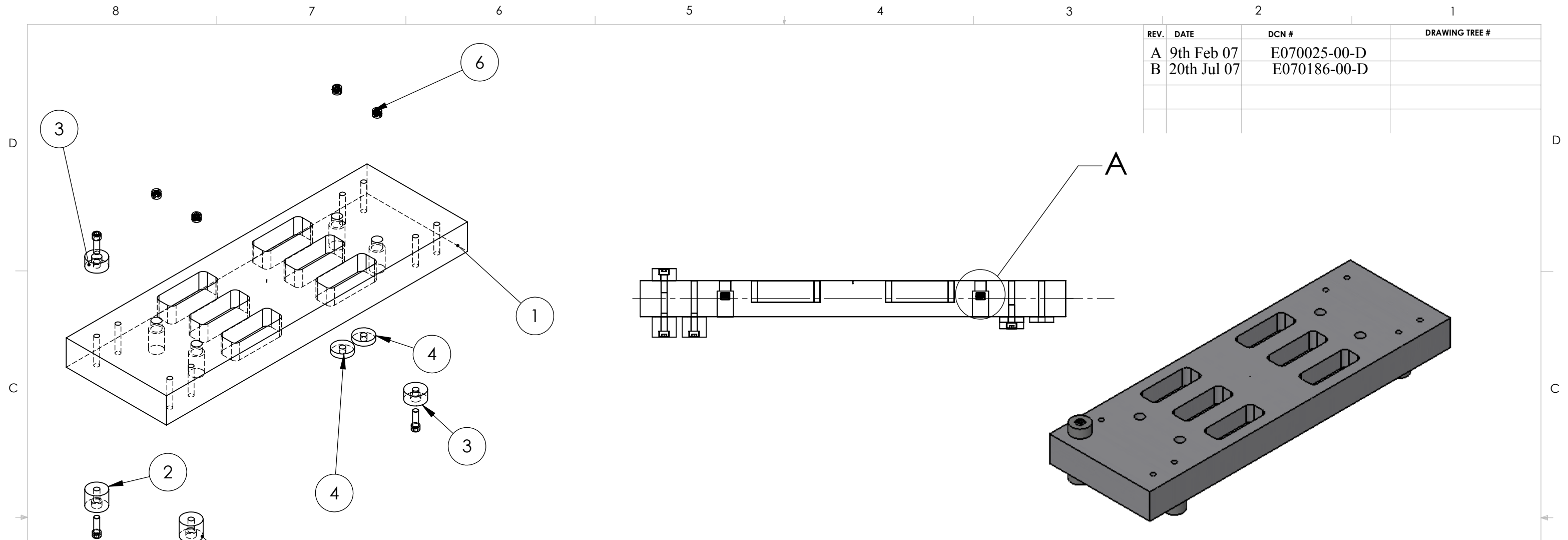


REV.	DATE	DCN #	DRAWING TREE #
A	9th Feb 07	E070025-00-D	
B	20th Jul 07	E070186-00-D	



ITEM NO.	REQ	SPARE	TOTAL	PART NUMBER	DESCRIPTION	MATERIAL
6	4		4	D070067	LOWER CLAMP WIRE CLAMP ASSEMBLY	--
5	4		4	--	SST SOCKET HEAD CAP SCREW 0.25-20 UNC-2A X 0.75 LONG	300 SSTL
4	2	4	6	D030078_20g_ADDONMAS S	UPPER MASS 20g ADD ON MASS	300 SERIES STAINLESS
3	2	4	6	D020351_50g_mass	UPPER MASS 50g ADD ON MASS	300 SERIES STAINLESS
2	2	4	6	D020350_100g_mass	UPPER MASS 100g ADD ON MASS	300 SSTL
1	1		1	D070027	METAL DUMMY OPTICAL BENCH	6061-T6-AI

**PARTS LIST**

<p>NOTES: (UNLESS OTHERWISE SPECIFIED)</p> <p>DIMENSIONS ARE IN INCHES</p> <p>TOLERANCES:          .XX ± 0.01          .XXX ± 0.005</p> <p>ANGULAR ± 0.5°</p> <p>MATERIAL --</p> <p>FINISH -- μ inch</p>		CALIFORNIA INSTITUTE OF TECHNOLOGY MASSACHUSETTS INSTITUTE OF TECHNOLOGY IGR, GLASGOW UNIVERSITY GEO 600 GROUP SCOTTISH UNIVERSITIES PHYSICS ALLIANCE TECHNOLOGY FOR EXPERIMENTAL & OBSERVATIONAL PHYSICS IN SCOTLAND (TEOPS)								
<table border="1"> <tr> <th>NAME</th> <th>DATE</th> </tr> <tr> <td>C Torrie</td> <td>7th Feb 2007</td> </tr> <tr> <td>M. Meyer</td> <td></td> </tr> <tr> <td></td> <td></td> </tr> </table>		NAME	DATE	C Torrie	7th Feb 2007	M. Meyer				<p>SYSTEM <b>ADVANCED LIGO</b></p> <p>SUB-SYSTEM <b>SUSPENSIONS</b></p> <p>NEXT ASSY <b>OMC</b></p> <p>PART NAME <b>METAL BENCH ASSEMBLY</b></p> <p>SIZE DWG. NO. <b>D070035</b></p> <p>SCALE: NTS PROJECTION: </p>
NAME	DATE									
C Torrie	7th Feb 2007									
M. Meyer										
<p>DRAWN</p> <p>CHECKED</p> <p>APPROVED</p>	<p>REV. <b>B</b></p>	<p>SHEET 1 OF 1</p>								