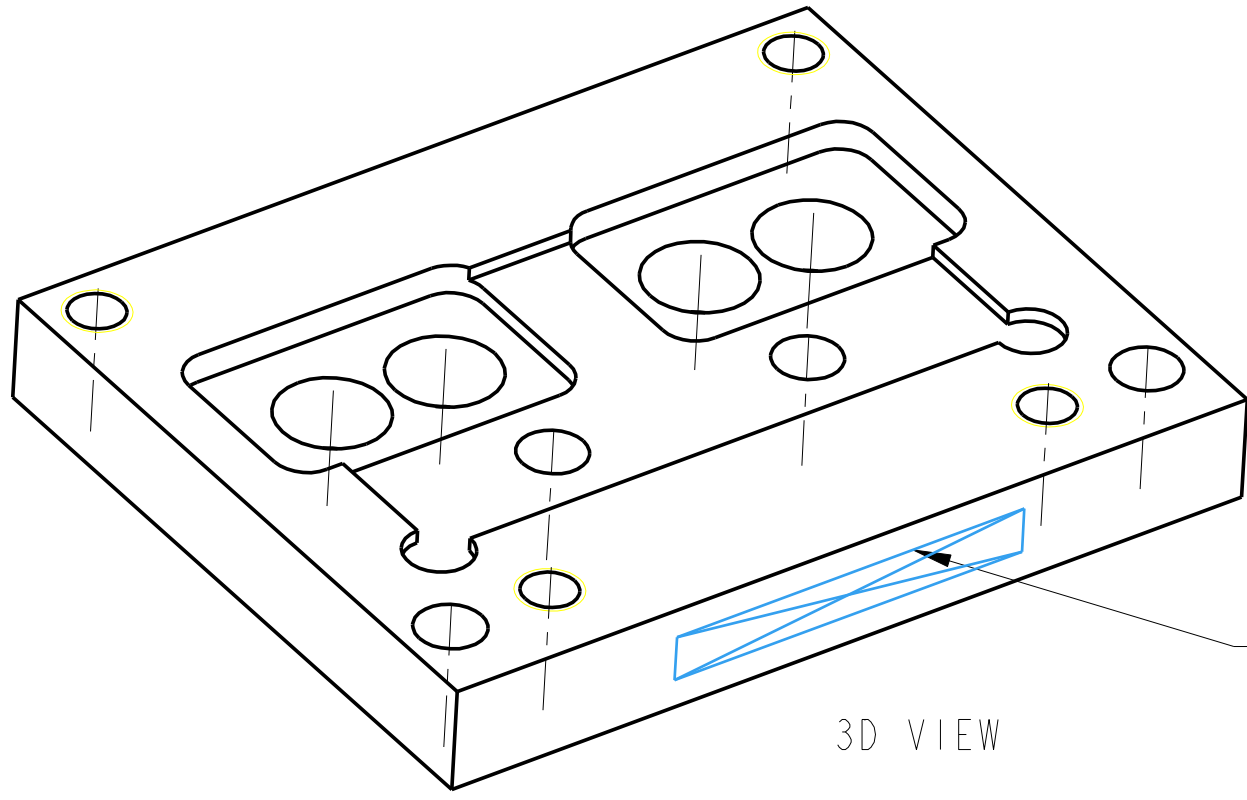
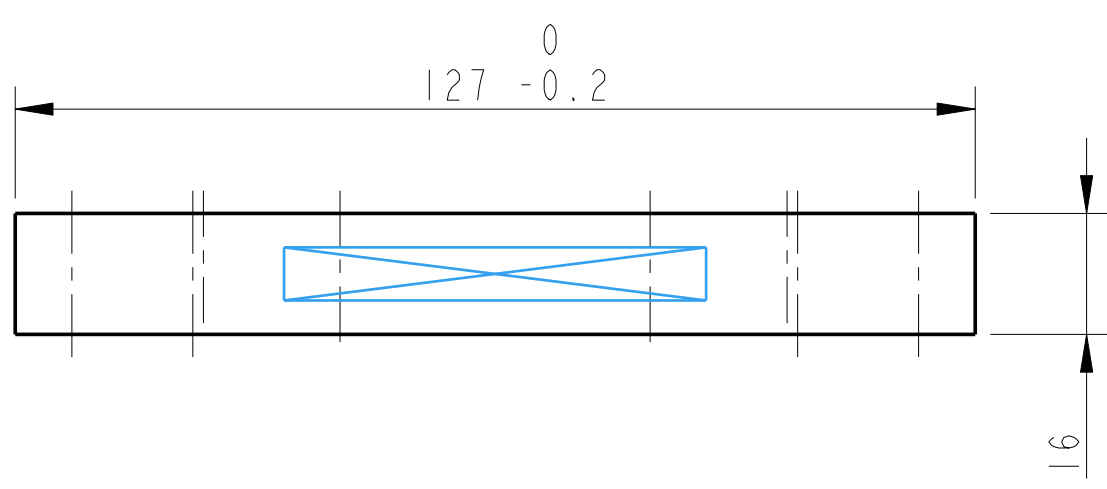
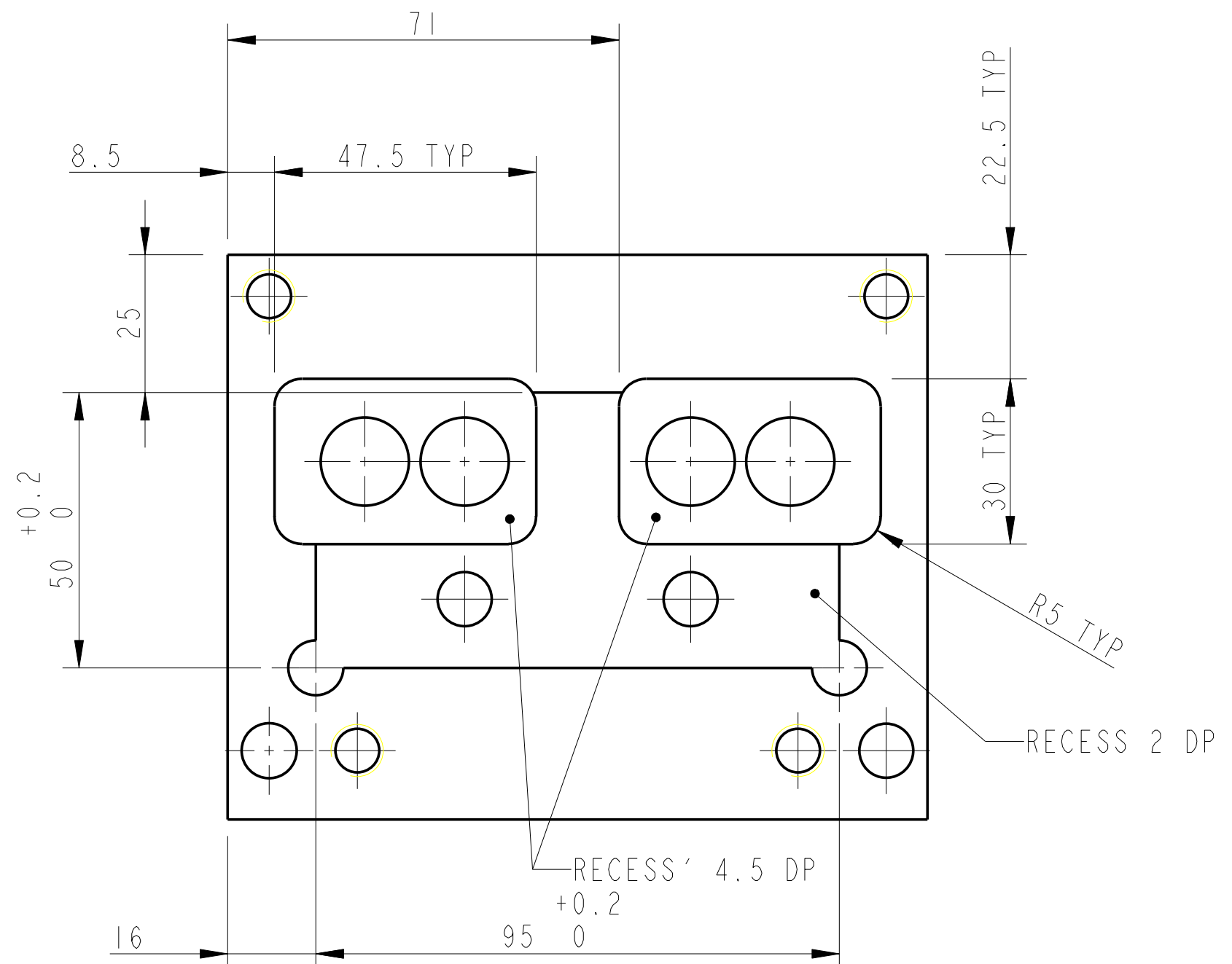
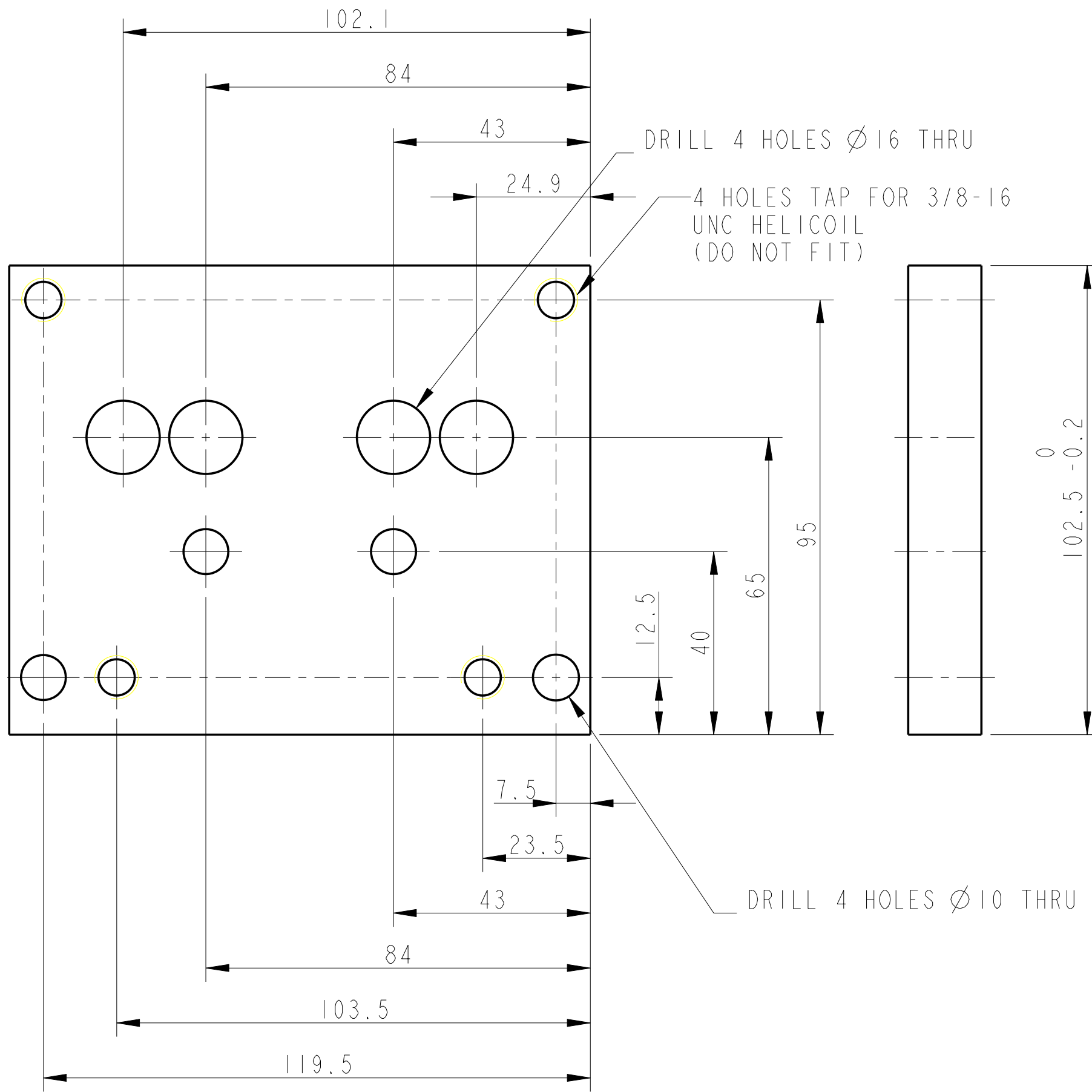


REV.	DATE	DCN #	DRAWING TREE #
A	17/OCT/06	E060242	



3D VIEW

PART No.
SEE NOTE 4

NOTES: (UNLESS OTHERWISE SPECIFIED)

- REMOVE ALL SHARP EDGES, R.02 MIN.
- DO NOT SCALE FROM DRAWING.
- ALL MACHINING FLUIDS SHALL BE WATER SOLUBLE AND FREE OF SULFUR, CHLORINE AND SILICONE, SUCH AS CINCINNATI MILACRON'S CIMTECH 410 (STAINLESS STEEL).
- SCRIBE, ENGRAVE OR STAMP DRAWING PART NUMBER ON NOTED SURFACE OF PART AND A THREE DIGIT SERIAL NUMBER. SERIAL NUMBERS START AT 001 FOR THE FIRST PART AND PROCEED CONSECUTIVELY. USE .07" HIGH CHARACTERS. EXAMPLE: D020188-001. A VIBRATORY TOOL MAY BE USED.

DIMENSIONS ARE IN mm (INCHES)	
X.XX ± mm (INCHES)	
ANGULAR ±0.25°	
MATERIAL:	AL ALLOY 6061 T6
FINISH:	CLEAN AND DEGREASED
√µm (µin)	Ro = 1.6
DRAWN	I WILMUT 19/sep/06
CHECKED	J'OD 17/OCT/06
APPROVED	RJG 17/OCT/06

SYSTEM	ADVANCED LIGO
SUB-SYSTEM	SUS
NEXT ASSY	QUAD INPTYPE TOP STAGE, TOP STAGE BLADE TOOLING
PART NAME	BLADE CLAMP BASE BLOCK
DRG. NO.	D060367
SCALE	1:1
PROJECTION	1
SHEET	1 OF 1