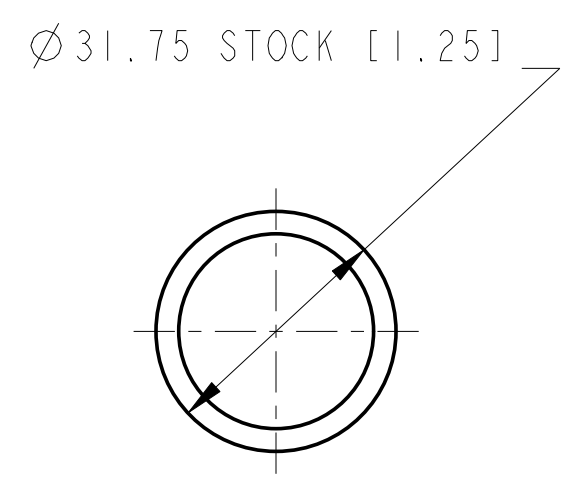
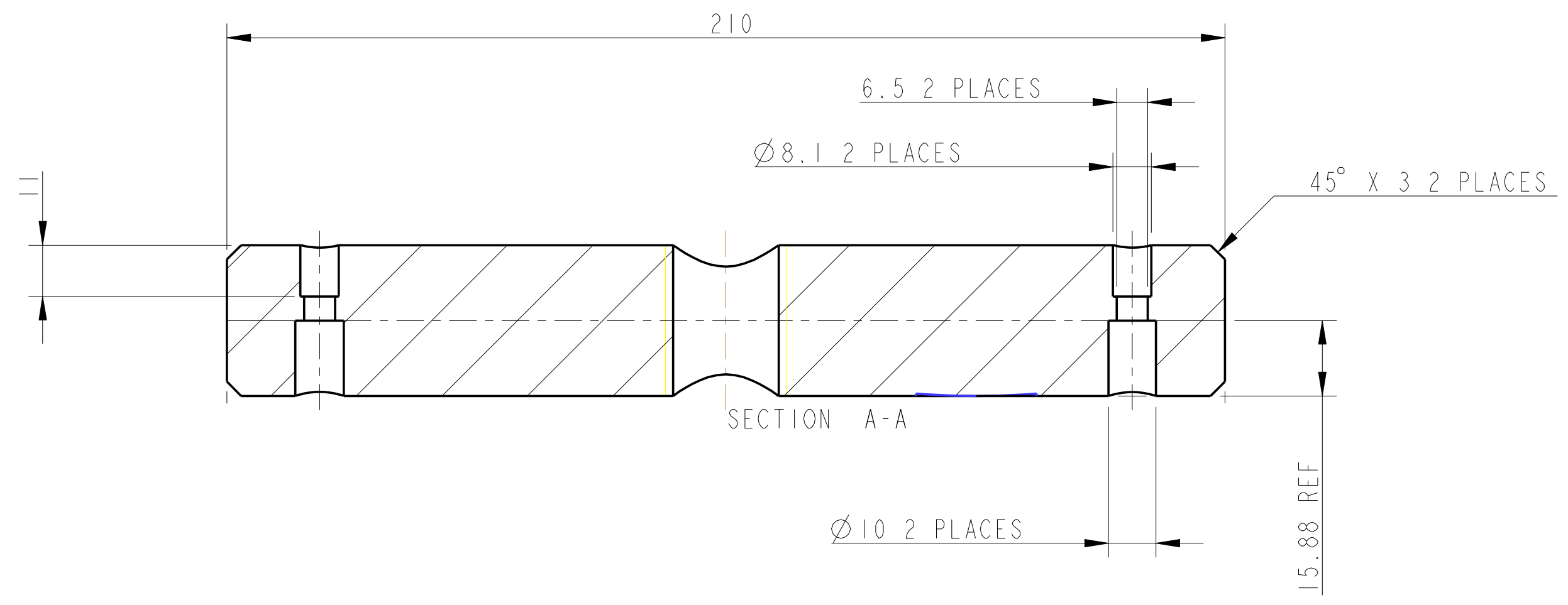
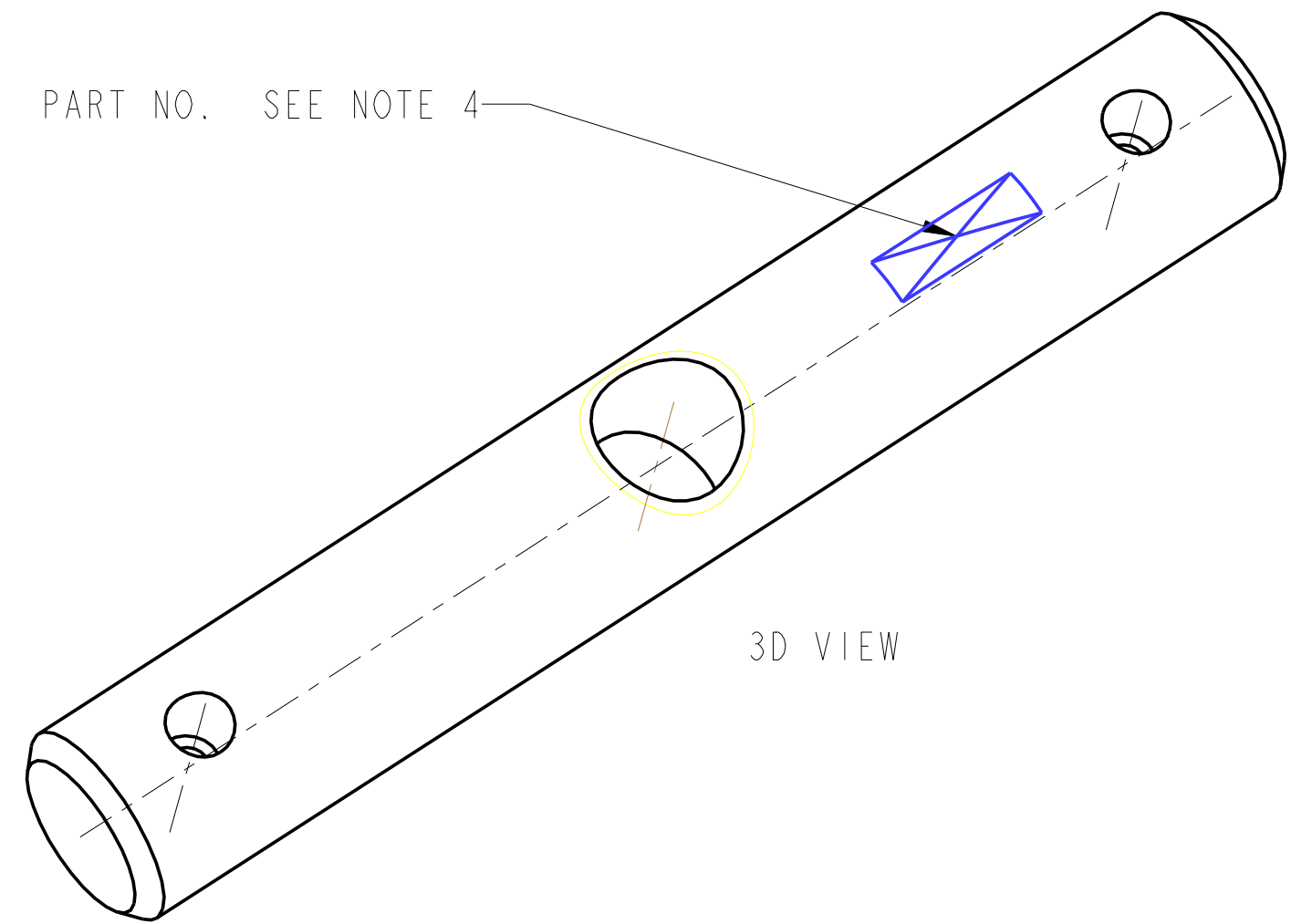
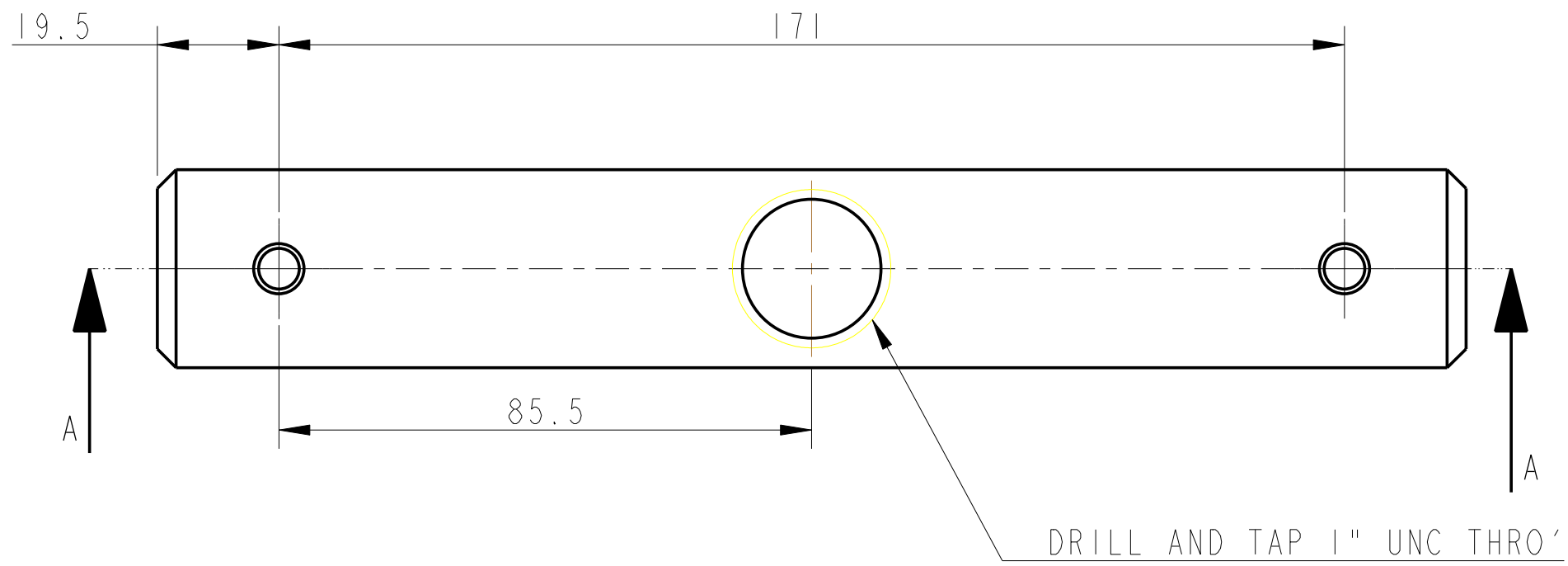


REV.	DATE	DCN #	DRAWING TREE #
A	17/OCT/06	E060242	



NOTES: (UNLESS OTHERWISE SPECIFIED)

- REMOVE ALL SHARP EDGES. R.02 MIN.
- DO NOT SCALE FROM DRAWING.
- ALL MACHINING FLUIDS SHALL BE WATER SOLUBLE AND FREE OF SULFUR, CHLORINE AND SILICONE, SUCH AS CINCINNATI MILACRON'S CIMTECH 410 (STAINLESS STEEL).
- SCRIBE, ENGRAVE OR STAMP DRAWING PART NUMBER ON NOTED SURFACE OF PART AND A THREE DIGIT SERIAL NUMBER. SERIAL NUMBERS START AT 001 FOR THE FIRST PART AND PROCEED CONSECUTIVELY. USE .07" HIGH CHARACTERS. EXAMPLE: D020188-001. A VIBRATORY TOOL MAY BE USED.

DIMENSIONS ARE IN mm [INCHES]		CALIFORNIA INSTITUTE OF TECHNOLOGY MASSACHUSETTS INSTITUTE OF TECHNOLOGY 1GR, GLASGOW UNIVERSITY GEO 600 GROUP RUTHERFORD APPLETON LABORATORIES	
TOLERANCES:		SYSTEM ADVANCED LIGO	
X.XX ± mm [INCHES]		SUB-SYSTEM SUS	
ANGULAR ±0.25°		NEXT ASSY QUAD INPTYPE TOP STAGE; TOP STAGE BLADE TOOLING	
MATERIAL: AL ALLOY 6061 T6		PART NAME STRAIGHTENING CARRIAGE HANDLE	
FINISH: √µm [µin] Ro = 63 [1.6]		SIZE C	
DRAWN	I WILMUT	DATE	19/SEP/06
CHECKED	J'OD	DATE	17/OCT/06
APPROVED	RJG	DATE	17/OCT/06
DRG. NO. D060363		SHEET 1 OF 1	

SCALE 1:1 PROJECTION: SHEET 1 OF 1