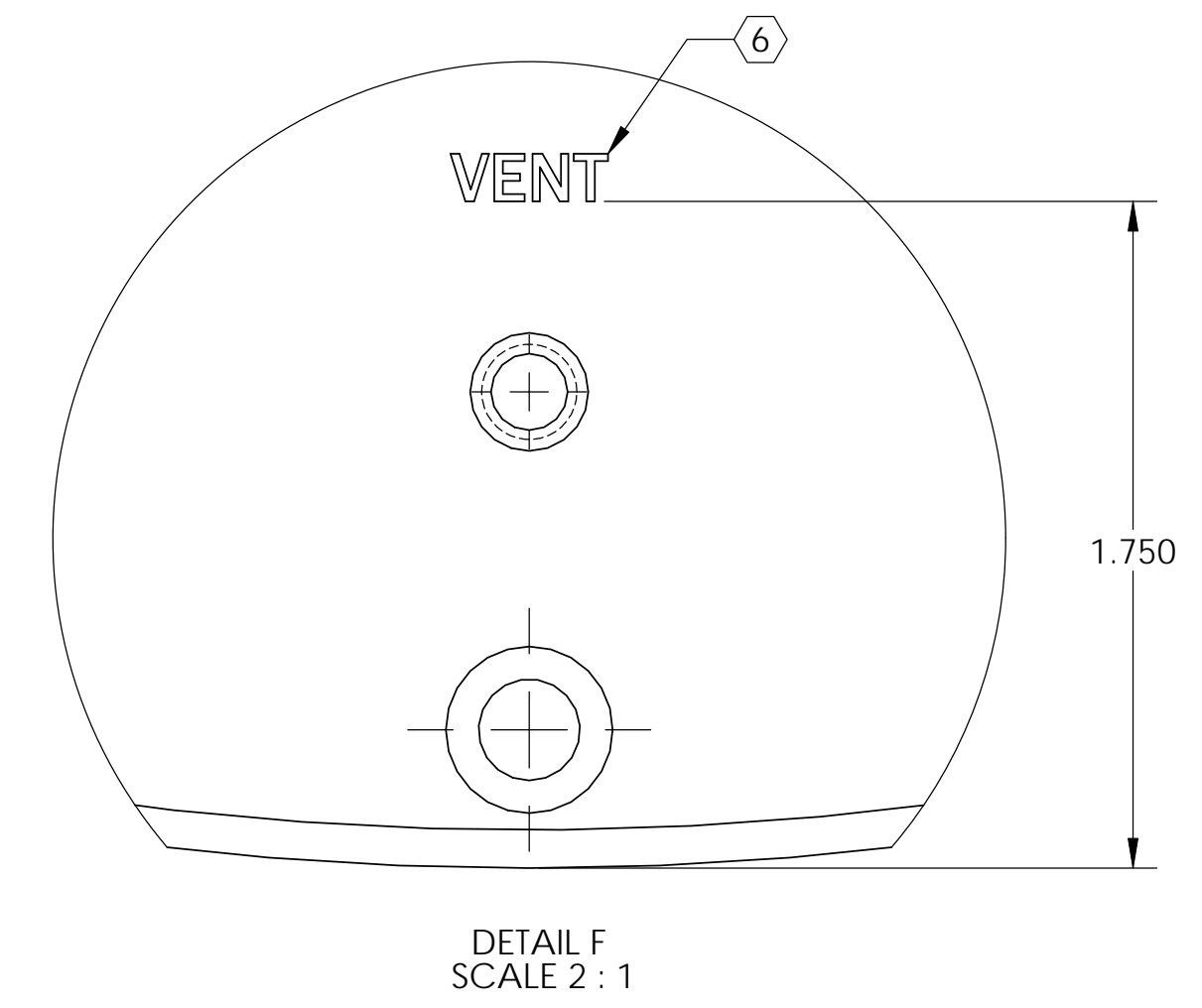
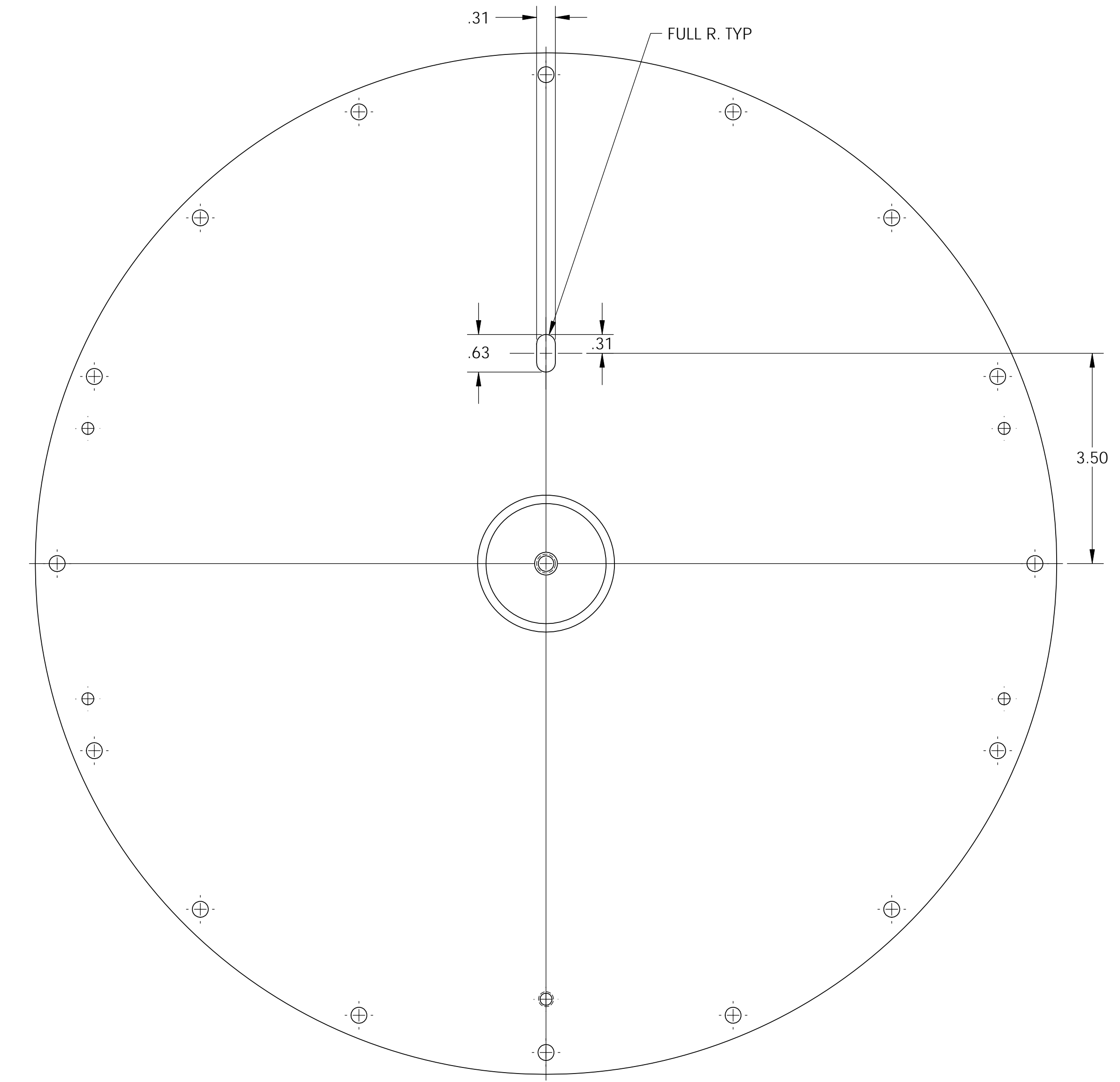
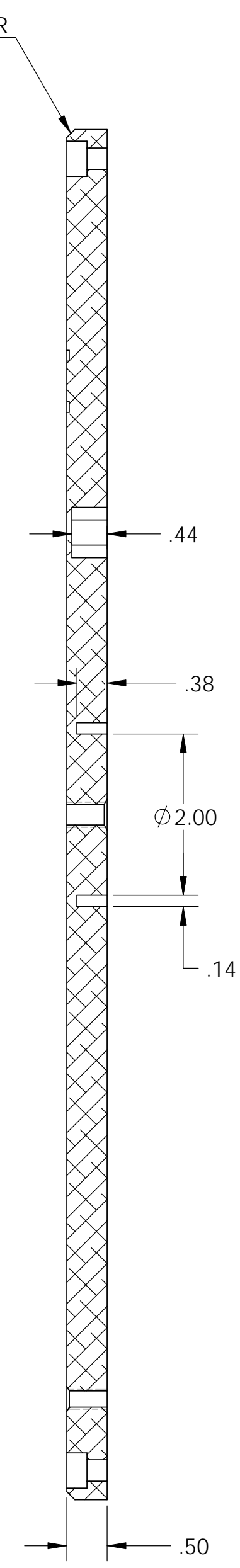
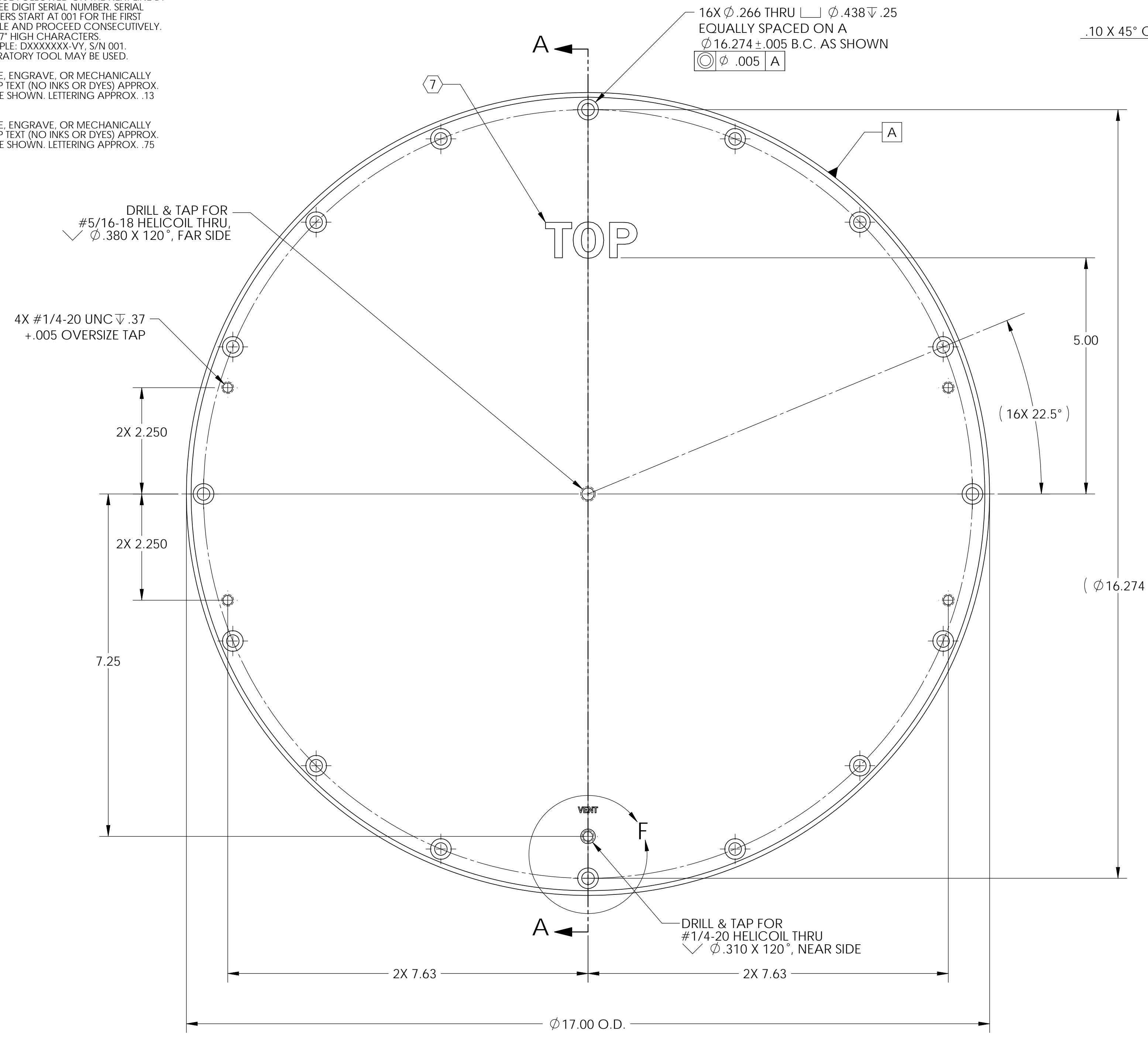


NOTES CONTINUED:
 ⑤ SCRIBE, ENGRAVE, OR MECHANICALLY STAMP (NO INKS OR DYES) DRAWING PART NUMBER AND REVISION ON NOTED SURFACE FOLLOWED ON THE NEXT LINE BY A THREE DIGIT SERIAL NUMBER. SERIAL NUMBERS START AT 001 FOR THE FIRST ARTICLE AND PROCEED CONSECUTIVELY. USE .07" HIGH CHARACTERS. EXAMPLE: DXXXXXX-VY, S/N 001. A VIBRATORY TOOL MAY BE USED.
 ⑥ SCRIBE, ENGRAVE, OR MECHANICALLY STAMP TEXT (NO INKS OR DYES) APPROX. WHERE SHOWN. LETTERING APPROX. .13 HIGH.
 ⑦ SCRIBE, ENGRAVE, OR MECHANICALLY STAMP TEXT (NO INKS OR DYES) APPROX. WHERE SHOWN. LETTERING APPROX. .75 HIGH.

REV.	DATE	DCN #	DRAWING TREE #
-	-	REFER TO E0900200-v1	-
-	-	-	-
-	-	-	-



NOTES AND TOLERANCES: (UNLESS OTHERWISE SPECIFIED)

- INTERPRET DRAWING PER ASME Y14.5-1994.
- REMOVE ALL SHARP EDGES, R .02 MIN.
- DO NOT SCALE FROM DRAWING.
- ALL MACHINING FLUIDS SHALL BE WATER SOLUBLE AND FREE OF SULFUR, CHLORINE AND SILICONE, SUCH AS CINCINNATI MILACRON'S CIMTECH 410.

DIMENSIONS ARE IN INCHES

TOLERANCES:
 .XX \pm 0.01
 .XXX \pm 0.005

ANGULAR \pm 0.5°

MATERIAL	6061-T6 Alum	FINISH	32 μ inch
----------	--------------	--------	---------------

CALIFORNIA INSTITUTE OF TECHNOLOGY MASSACHUSETTS INSTITUTE OF TECHNOLOGY SYSTEM ADVANCED LIGO	SUB-SYSTEM COC	PART NAME		Cover, Lid, ETM Optic Container		
		DESIGNER	ED CHAVEZ	15 JUN 2009	SIZE	DWG. NO.
		DRAFTER	ED CHAVEZ	14 JUL 2009	D	D0901210
NEXT ASSY		CHECKER	REFER TO E0900200-v1	APPROVAL	REFER TO E0900200-v1	
ETM Optic Container		SCALE:	1:2	PROJECTION:	SHEET 1 OF 1	

D0901210 Cover, Lid, Alum, Box, Rev. ETM, PART FROM REV. X.001, DRAWING FROM REV. X.002