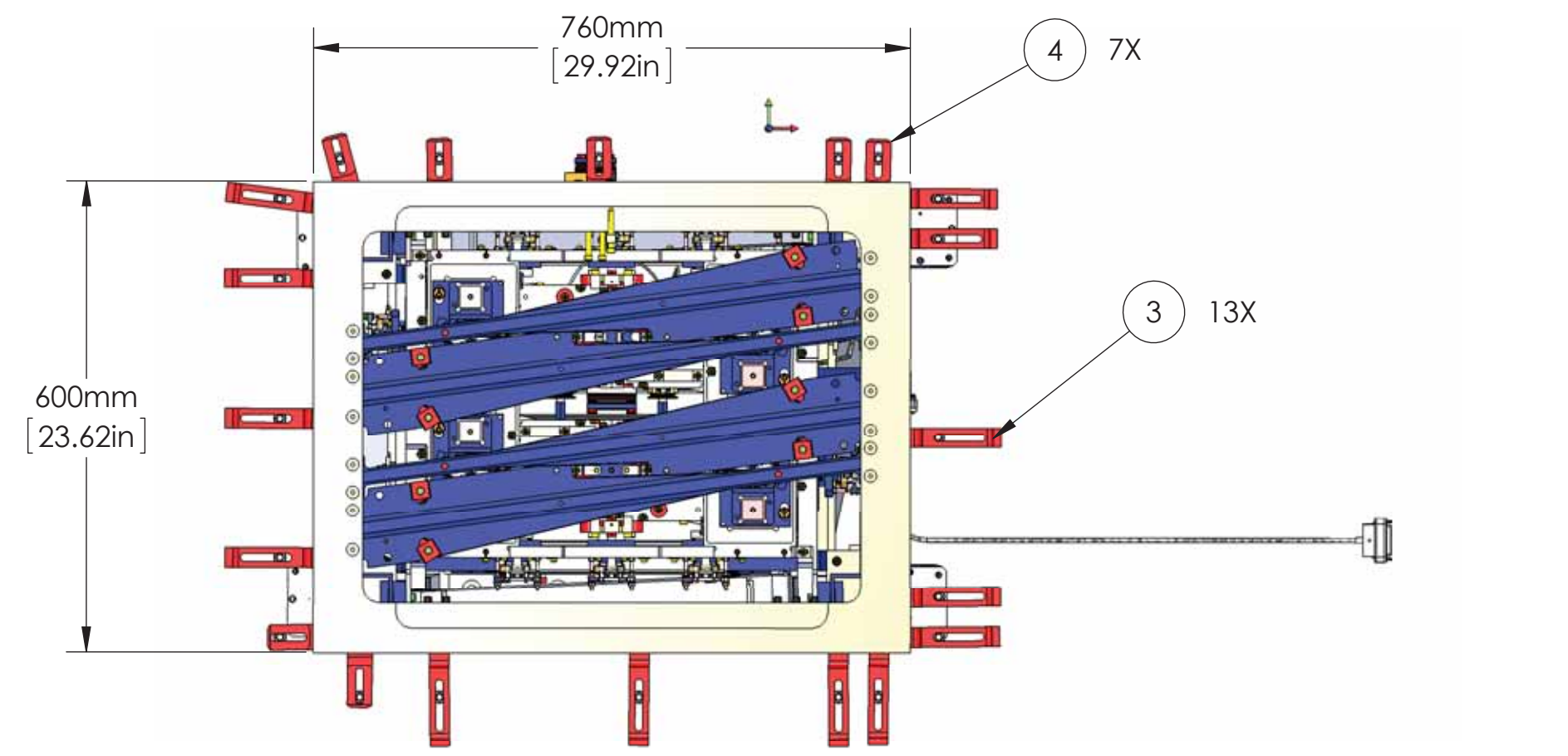
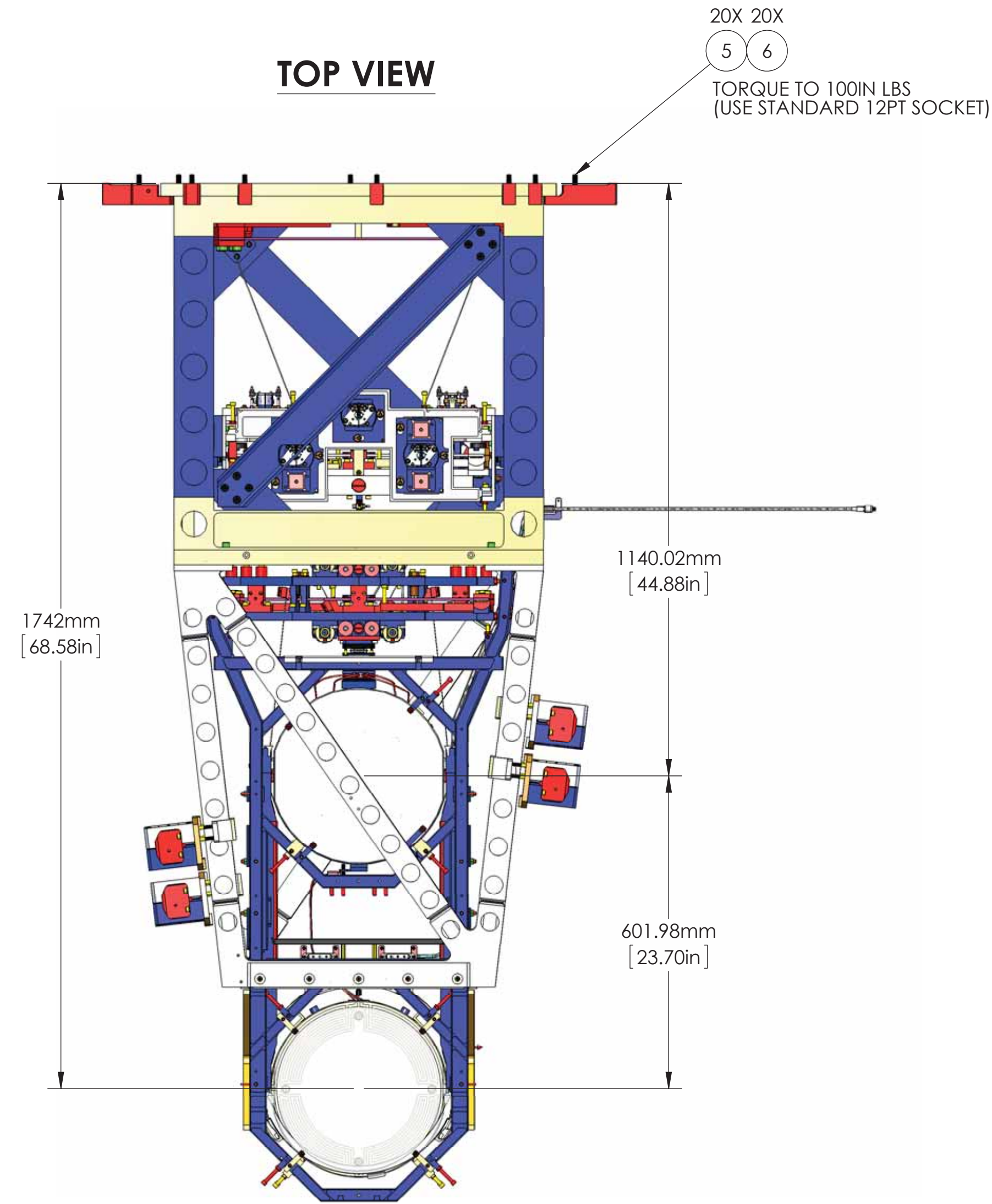


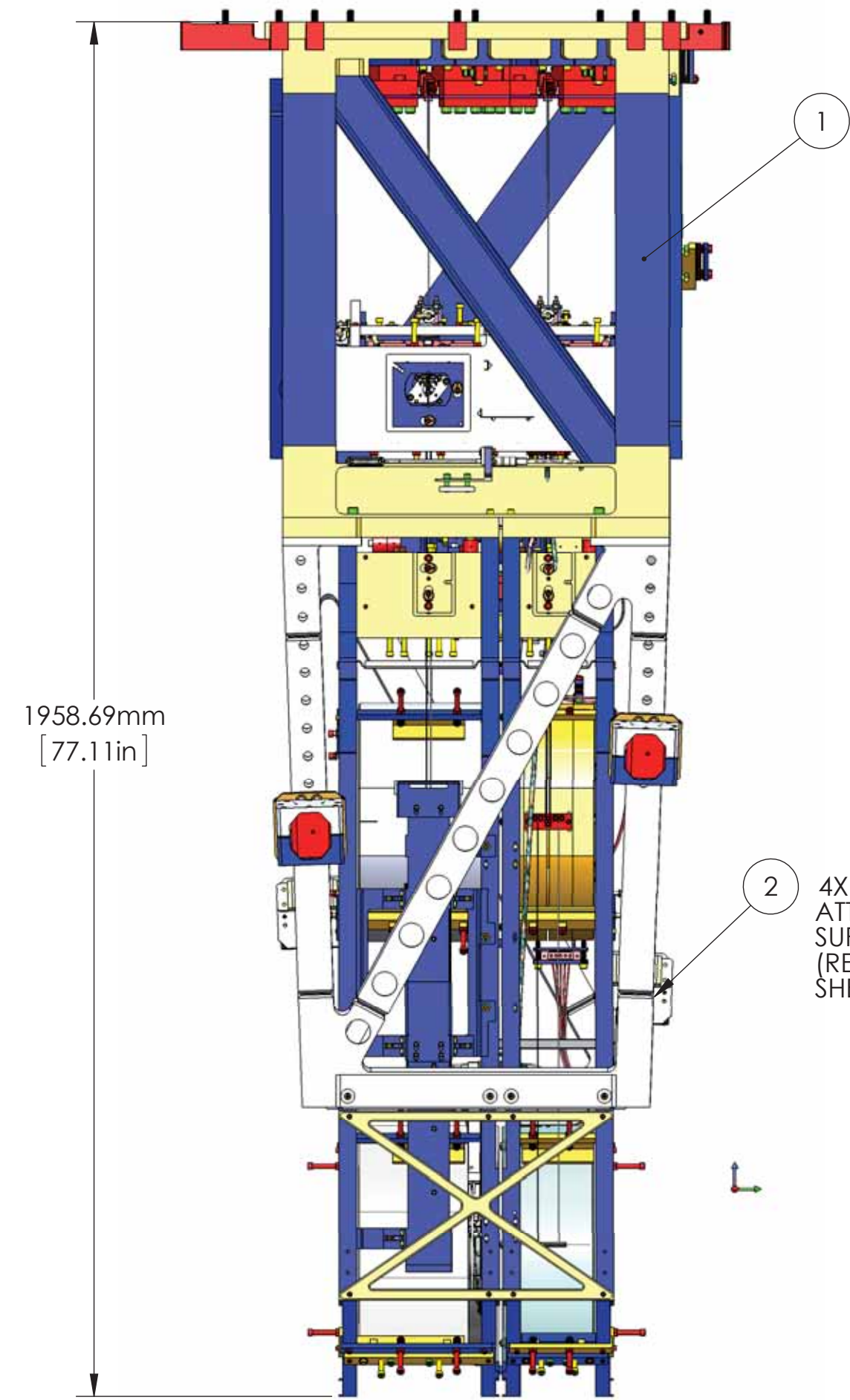
REV.	DATE	DCN #	DRAWING TREE #
v1	31 MAY 2013	-	-
v4	11 NOV 2013	E1300861-x0	-
-	-	-	-



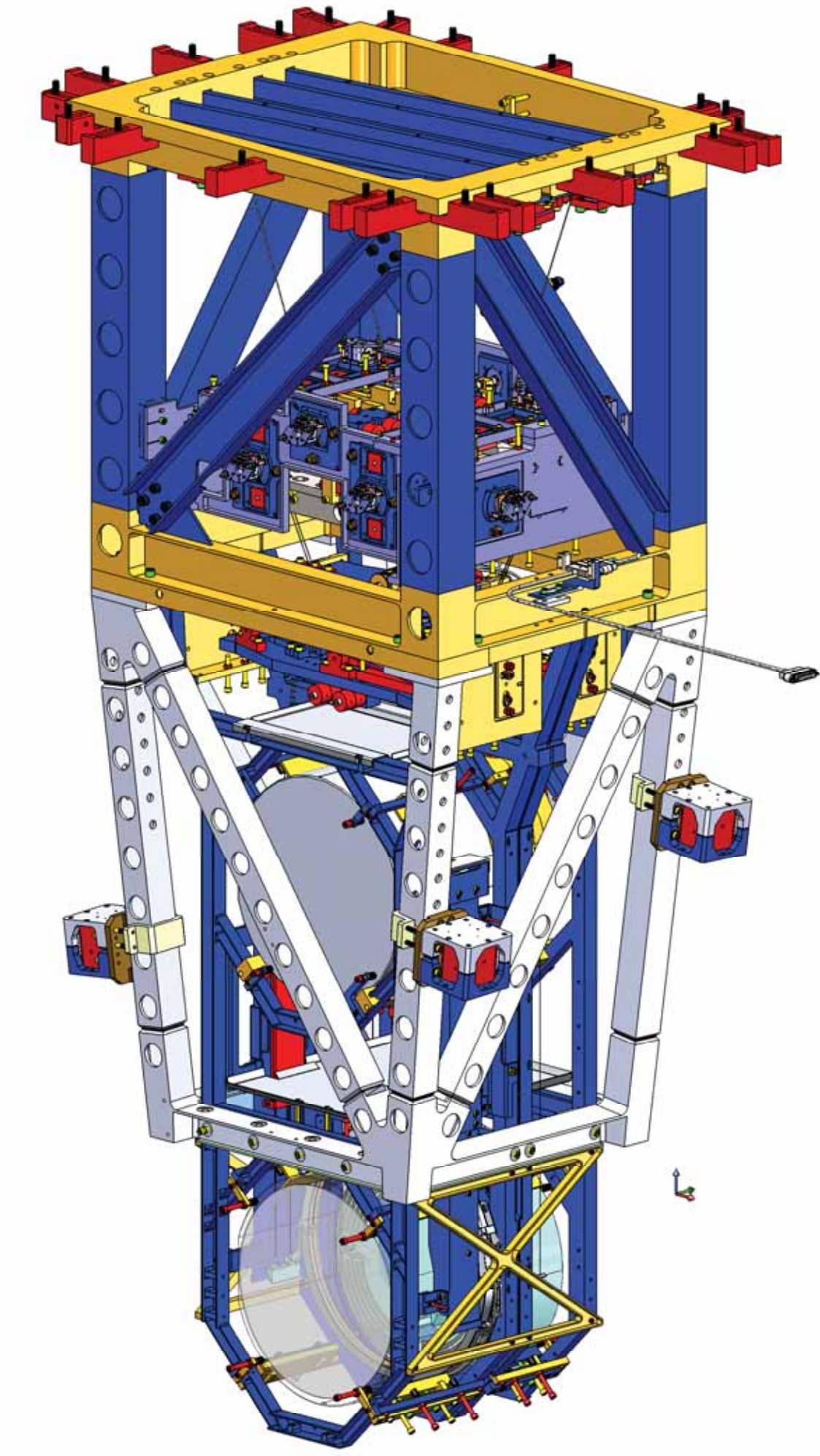
**TOP VIEW**



**FRONT VIEW**



**RIGHT VIEW**



**LOCAL COORDINATES REFERENCE**

X mm	Y mm	Z mm	Y aw°
-200.0	-537.6	-80.0	0.0

SEE PAGE 4 FOR CS DEFINITION

**NOTES AND TOLERANCES: (UNLESS OTHERWISE SPECIFIED)**

DIMENSIONS ARE IN	1. INTERPRET DRAWING PER ASME Y14.5-1994.
TOLERANCES:	2. REMOVE ALL SHARP EDGES, .005-.015, FOR MACHINED PARTS. ROUND ALL EDGES APPROXIMATELY R.02 FOR SHEET METAL PARTS.
.XX ±	3. DO NOT SCALE FROM DRAWING.
.XXX ±	4. ALL MACHINING FLUIDS MUST BE FULLY SYNTHETIC, FULLY WATER SOLUBLE AND FREE OF SULFUR, SILICONE, AND CHLORINE.
ANGULAR ± °	
MATERIAL	N/A
FINISH	N/A μinch

**LIGO** CALIFORNIA INSTITUTE OF TECHNOLOGY  
MASSACHUSETTS INSTITUTE OF TECHNOLOGY

SYSTEM: ADVANCED LIGO    SUB-SYSTEM: SUS

NEXT ASSY: D0901154

PART NAME: AdvLIGO SUS BSC10-H1, XYZ Local CS for ETMY

DESIGNER: ED CHAVEZ	DATE: 31 MAY 2013	SIZE: D	DWG. NO.: D0901157	REV.: v4
CHECKER: CALUM TORRIE	DATE: 31 MAY 2013	SCALE: 1:12	PROJECTION:	SHEET 1 OF 4
APPROVAL: SEE DCC	DATE: SEE DCC			

ITEM NO.	PART NUMBER	DESCRIPTION	QTY.
6	D1100785-562	WASHER, FLAT, .38 X .562 O.D.	20
5	3AJ1.500-12CL	3/8-16 X 1.50 12PT BOLT	20
4	D1003190	ALIGO QUAD SHORTER DOG CLAMP	7
3	D070056	ALIGO SUS QUAD N-PTYPE, QUAD DOG CLAMP	13
2	D1002424	VIBRATION ABSORBER ASSEMBLY	4
1	D0901346-04	ALIGO SUS QUAD ETM SUS ASSY TOP LEVEL TD-1084-090	1

PARTS LIST

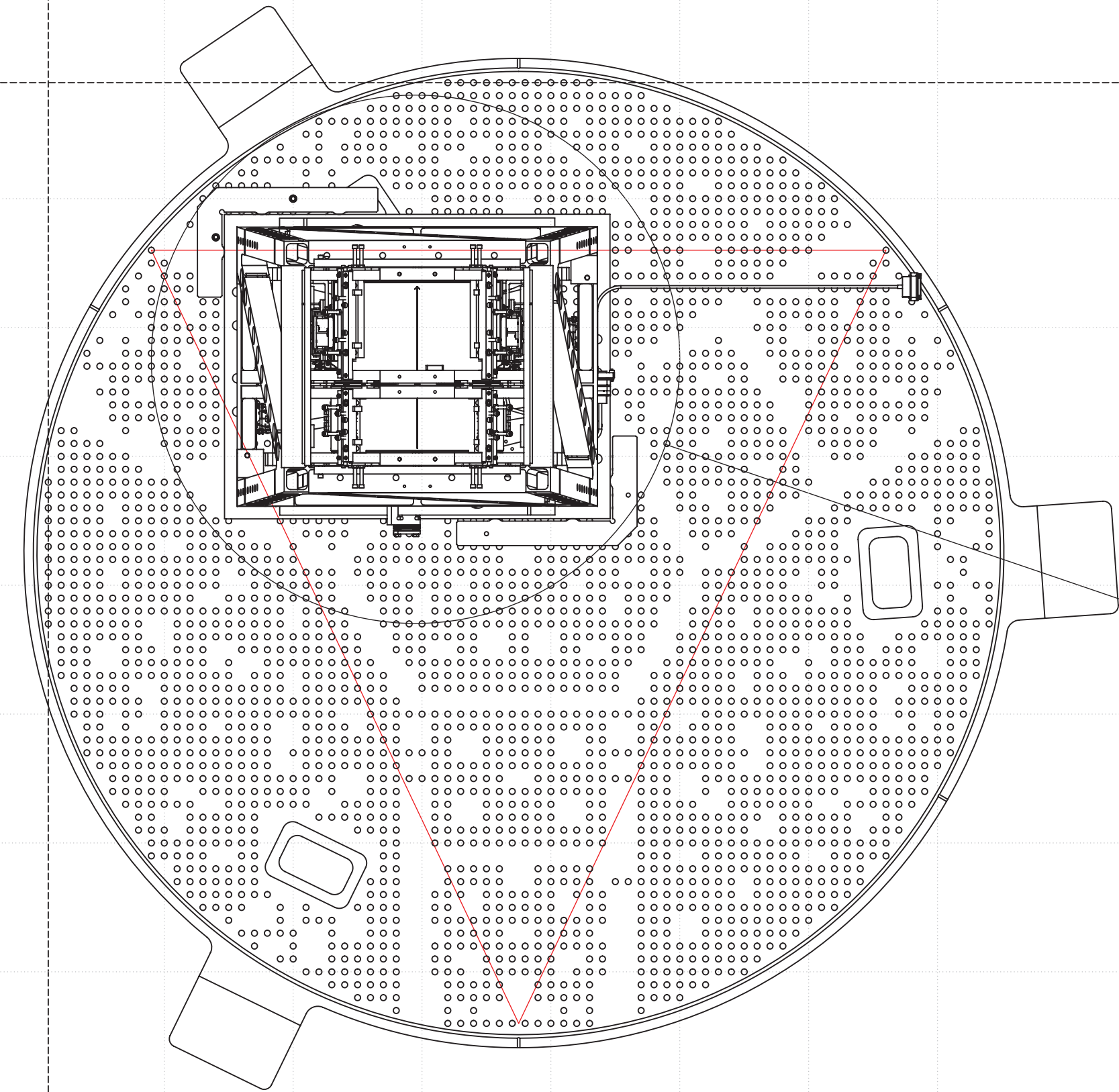
D0901157 AdvLIGO SUS BSC10-H1, XYZ Local CS for ETMY, PART PDM REV: X-059, DRAWING PDM REV: X-004

A10 A20 A30 A40 A50 A60 A70

B1  
B10  
B20  
B30  
B40  
B50  
B60  
B70

BSC1-H1 ↑

HR SIDE ↓



D1101050-29 "WBSC5A"  
NOTE: ONLY ONE TEMPLATE USED,  
THIS ONE OR D1101050-30  
ON OPPOSITE CORNER

SCREW HOLE  
A20, B10

A20

A30

A40

+X

B10

SCREW HOLE  
A13, B14

B20

B30

BOTTOM VIEW  
(LOOKING UP)

+Y ↓

+Y ↑

+X

AR SIDE ↑

SCREW HOLE  
A46, B33

D1101050-30 "WBSC5B"  
NOTE: ONLY ONE TEMPLATE USED,  
THIS ONE OR D1101050-29 ON  
OPPOSITE CORNER

SCREW HOLE  
A35, B36

**BOTTOM VIEW (LOOKING UP)**  
**D0901516 OPTICAL TABLE SHOWN FOR QUAD POSITIONING.**  
**TEMPLATE LOCATION AND ORIENTATION ONLY. (VIBRATION ABSORBERS,**  
**DOG CLAMPS AND MOUNTING HARDWARE NOT SHOWN FOR CLARITY)**

BSC1-H1 ↓

TOP VIEW  
(LOOKING DOWN)

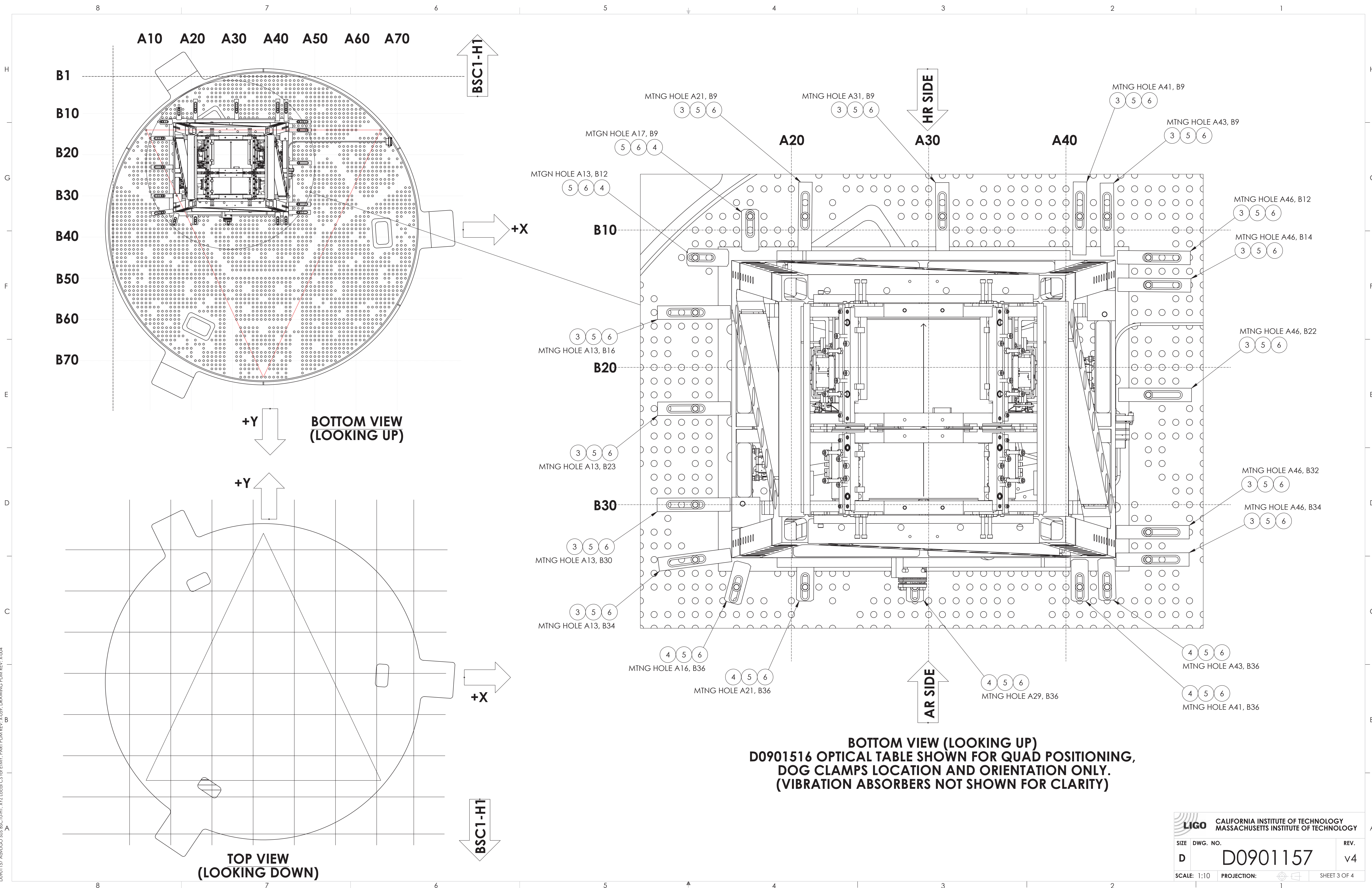
**LIGO** CALIFORNIA INSTITUTE OF TECHNOLOGY  
MASSACHUSETTS INSTITUTE OF TECHNOLOGY

SIZE DWG. NO. REV.

D D0901157 v4

SCALE: 1:10 PROJECTION: SHEET 2 OF 4

D0901157\_A04\LGO\_S16\_BSC10-H1\_XYZ\_Local\_CS\_for\_EIMY\_PART\_PDM\_REV\_X-059\_DRAWING\_PDM\_REV\_X-004



**BOTTOM VIEW (LOOKING UP)  
D0901516 OPTICAL TABLE SHOWN FOR QUAD POSITIONING,  
DOG CLAMPS LOCATION AND ORIENTATION ONLY.  
(VIBRATION ABSORBERS NOT SHOWN FOR CLARITY)**

D0901157 Asst LIGO S16 BSC10-H1 XZ Local CS for ENVI PART PDM REV. X-059 DRAWING PDM REV. X-004

