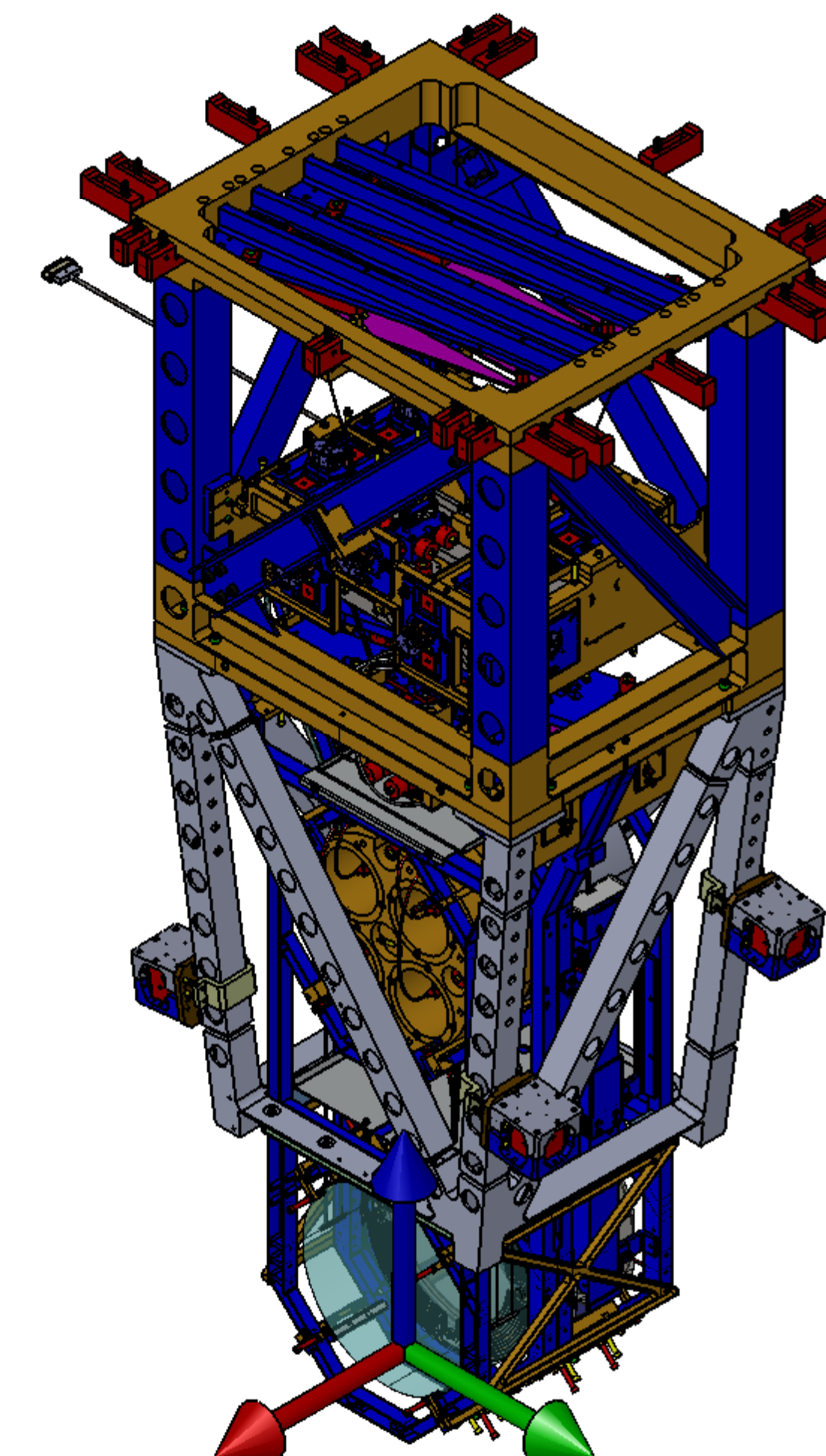
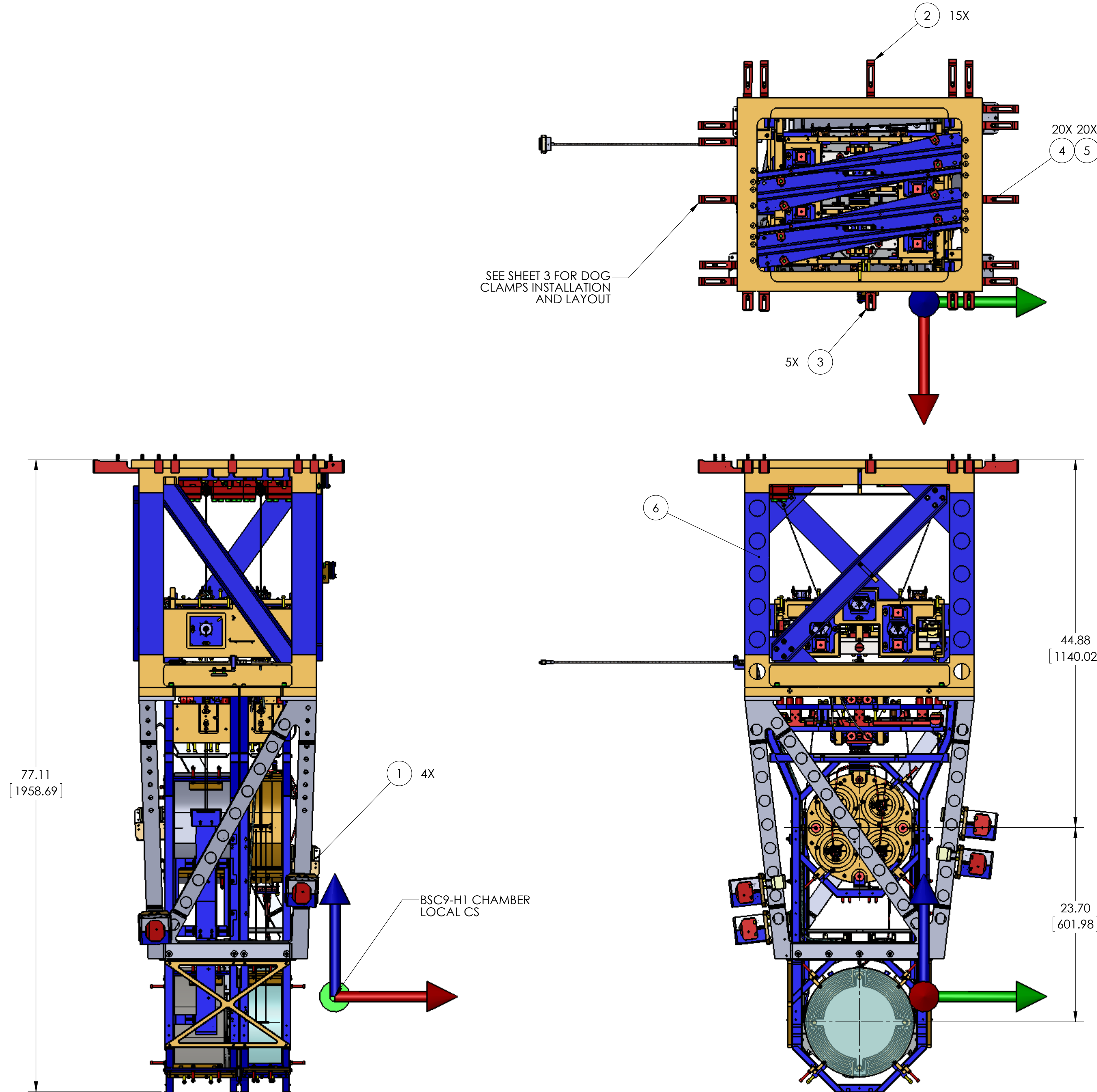


REV.	DATE	DCN #	DRAWING TREE #
v1	04 APR 2013	-	-
v2	16 JUL 2013	-	-
-	-	-	-



LOCAL COORDINATES - REFERENCE

X mm	Y mm	Z mm	Yaw°
- 502.0	- 200.0	- 80.0	0.0

NOTES AND TOLERANCES: (UNLESS OTHERWISE SPECIFIED)	
DIMENSIONS ARE IN	1. INTERPRET DRAWING PER ASME Y14.5-1994.
TOLERANCES:	2. REMOVE ALL SHARP EDGES, .005-.015, FOR MACHINED PARTS. ROUND ALL EDGES APPROXIMATELY R.02 FOR SHEET METAL PARTS.
.XX ±	3. DO NOT SCALE FROM DRAWING.
.XXX ±	4. ALL MACHINING FLUIDS MUST BE FULLY SYNTHETIC, FULLY WATER SOLUBLE AND FREE OF SULFUR, SILICONE, AND CHLORINE.
ANGULAR ± °	
MATERIAL	FINISH
--	-- μinch

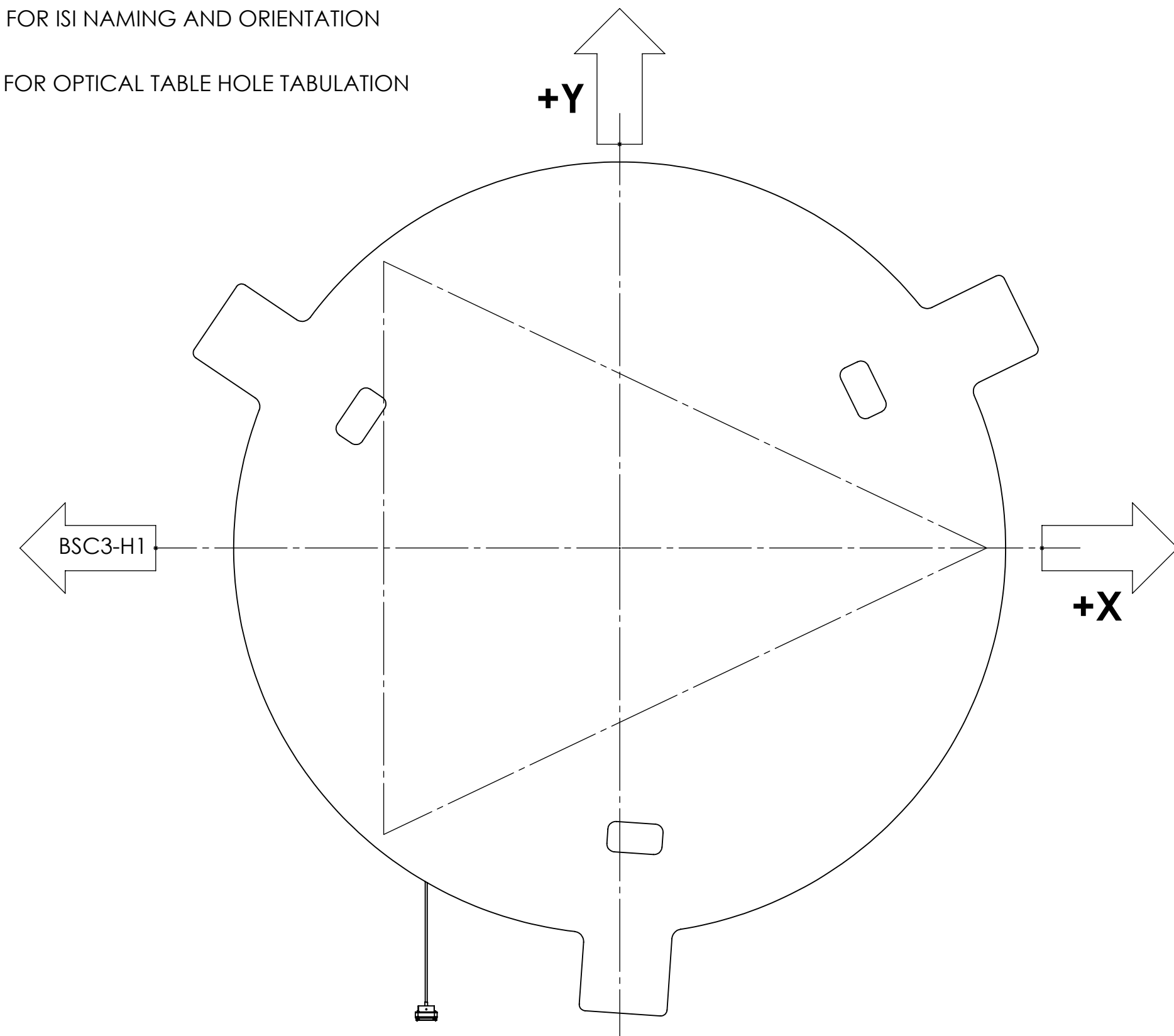
CALIFORNIA INSTITUTE OF TECHNOLOGY MASSACHUSETTS INSTITUTE OF TECHNOLOGY	
SYSTEM	SUB-SYSTEM
ADVANCED LIGO	SUS
NEXT ASSY	

PART NAME		PARTS LIST	
AdvLIGO SUS BSC9-H1, XYZ Local CS for ETMX			
DESIGNER	ED CHAVEZ	DATE	04 APR 2012
CHECKER		SCALE	1:12
APPROVAL		PROJECTION	
SIZE	D	DWG. NO.	D0901153
REV.	v2	SHEET	1 OF 4

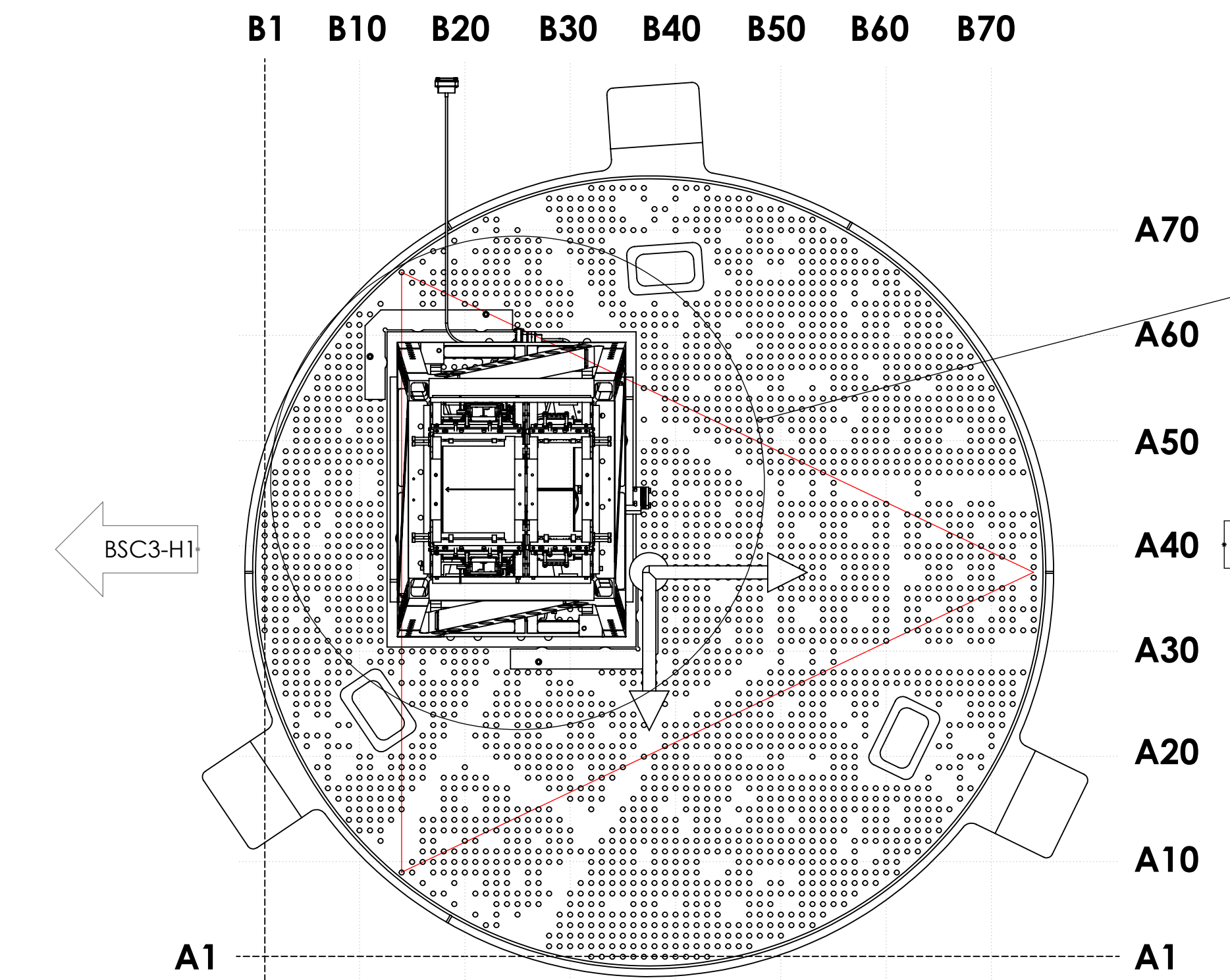
ITEM NO.	PART NUMBER	DESCRIPTION	MATERIAL	QTY REQ
6	D0901346-04	AdvLIGO SUS QUAD ETM SUS ASSY TOP LEVEL TD-1084-090	N/A	1
5	D1100785-562	WASHER, FLAT, .38 X .562 O.D.	NITRONIC 60	20
4	3AJ1.500-12CL	3/8-16 X 1.50 12PT BOLT	450 SSSL	20
3	D1003190	AdvLIGO QUAD SHORTER DOG CLAMP	304 SSSL	5
2	D070056	AdvLIGO, SUS, QUAD N-PTYPE, QUAD DOG CLAMP	304 SSSL	15
1	D1002424	VIBRATION ABSORBER ASSEMBLY	N/A	4

D0901153 AdvLIGO SUS BSC9-H1, XYZ Local CS for ETMX, PART PDM REV. X-246, DRAWING PDM REV. X-001

5. REFER TO G1000125 FOR ISI NAMING AND ORIENTATION CONVENTION.
 6. REFER TO D1101271 FOR OPTICAL TABLE HOLE TABULATION CONVENTION



**TOP VIEW
(LOOKING DOWN)**

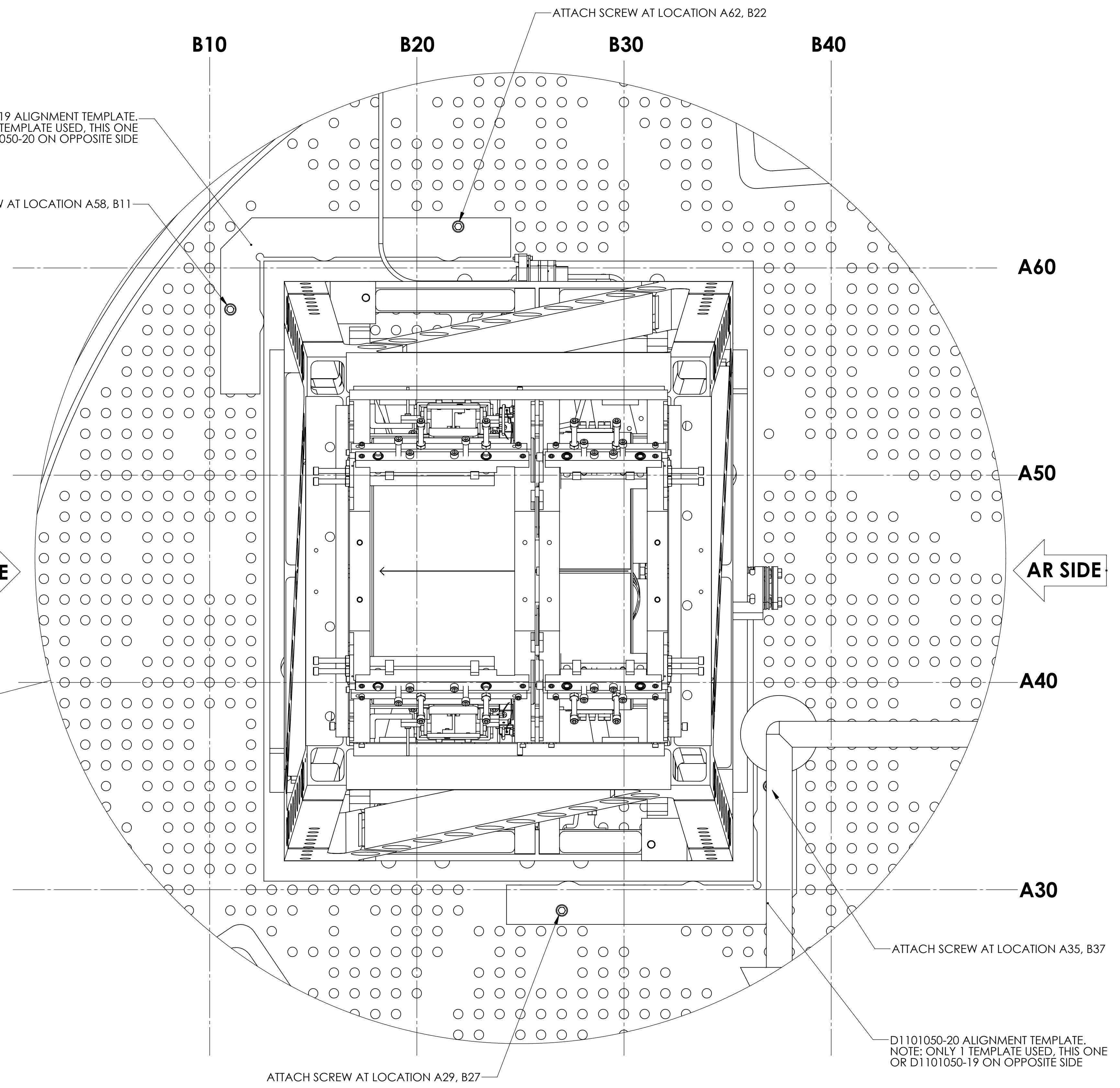


**BOTTOM VIEW
(LOOKING UP)**

D1101050-19 ALIGNMENT TEMPLATE.
 NOTE: ONLY 1 TEMPLATE USED, THIS ONE
 OR D1101050-20 ON OPPOSITE SIDE

ATTACH SCREW AT LOCATION A58, B11

HR SIDE



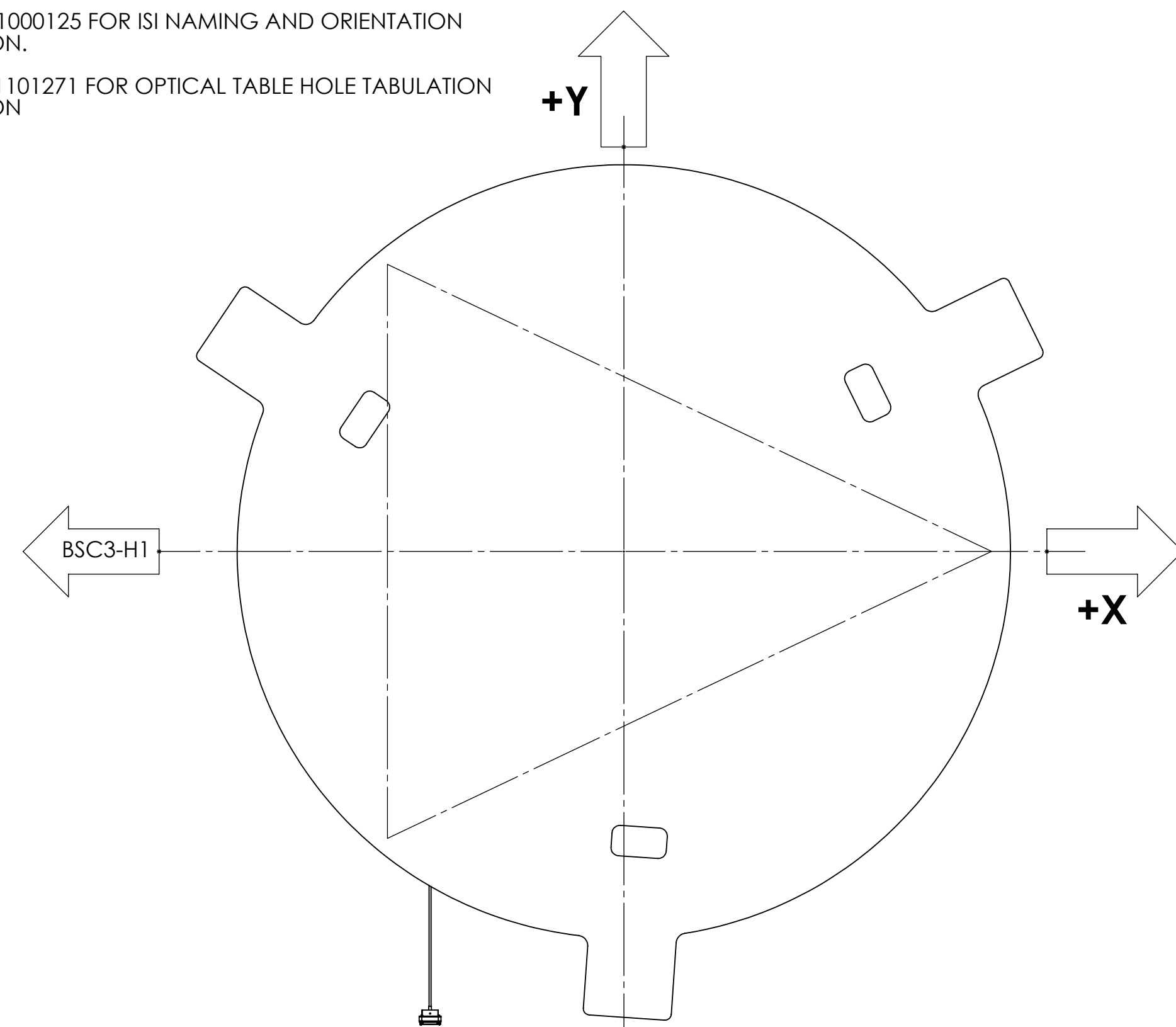
**DETAIL 'A'
SCALE 1:3**

**BOTTOM VIEW (LOOKING UP)
 D0901516 OPTICAL TABLE SHOWN FOR QUAD POSITIONING
 TEMPLATE LOCATION AND ORIENTATION ONLY. (DOG CLAMPS
 AND MOUNTING HARDWARE NOT SHOWN FOR CLARITY)**

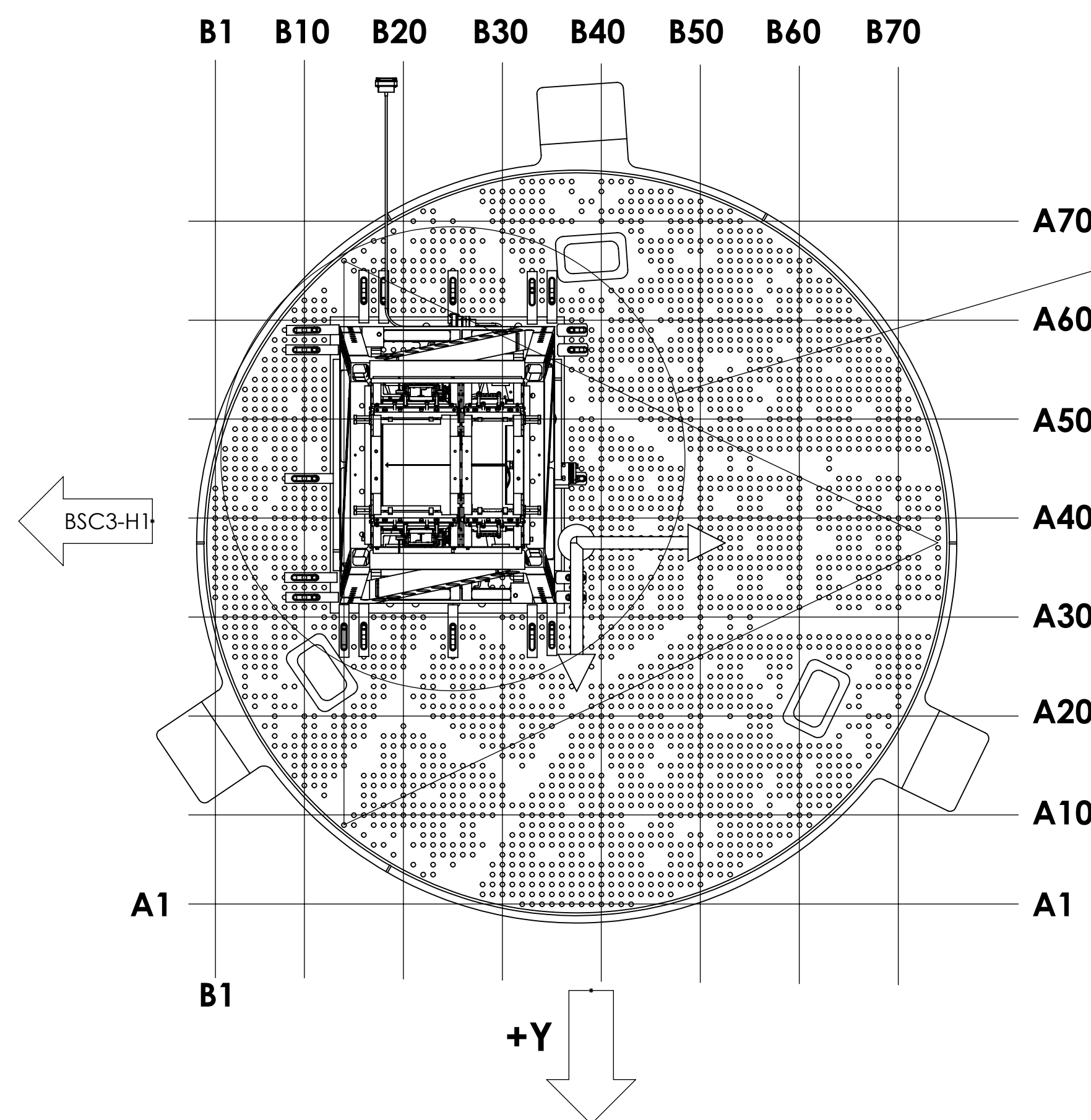
LIGO CALIFORNIA INSTITUTE OF TECHNOLOGY MASSACHUSETTS INSTITUTE OF TECHNOLOGY		REV.
SIZE DWG. NO.	D0901153	v2
SCALE: 1:16	PROJECTION:	SHEET 2 OF 4

D0901153-ASU/LGO-SUB-BSC3-H1.XTZ Loc: C3 for ETMX. PART PDM REV: X-046. DRAWING PDM REV: X-001

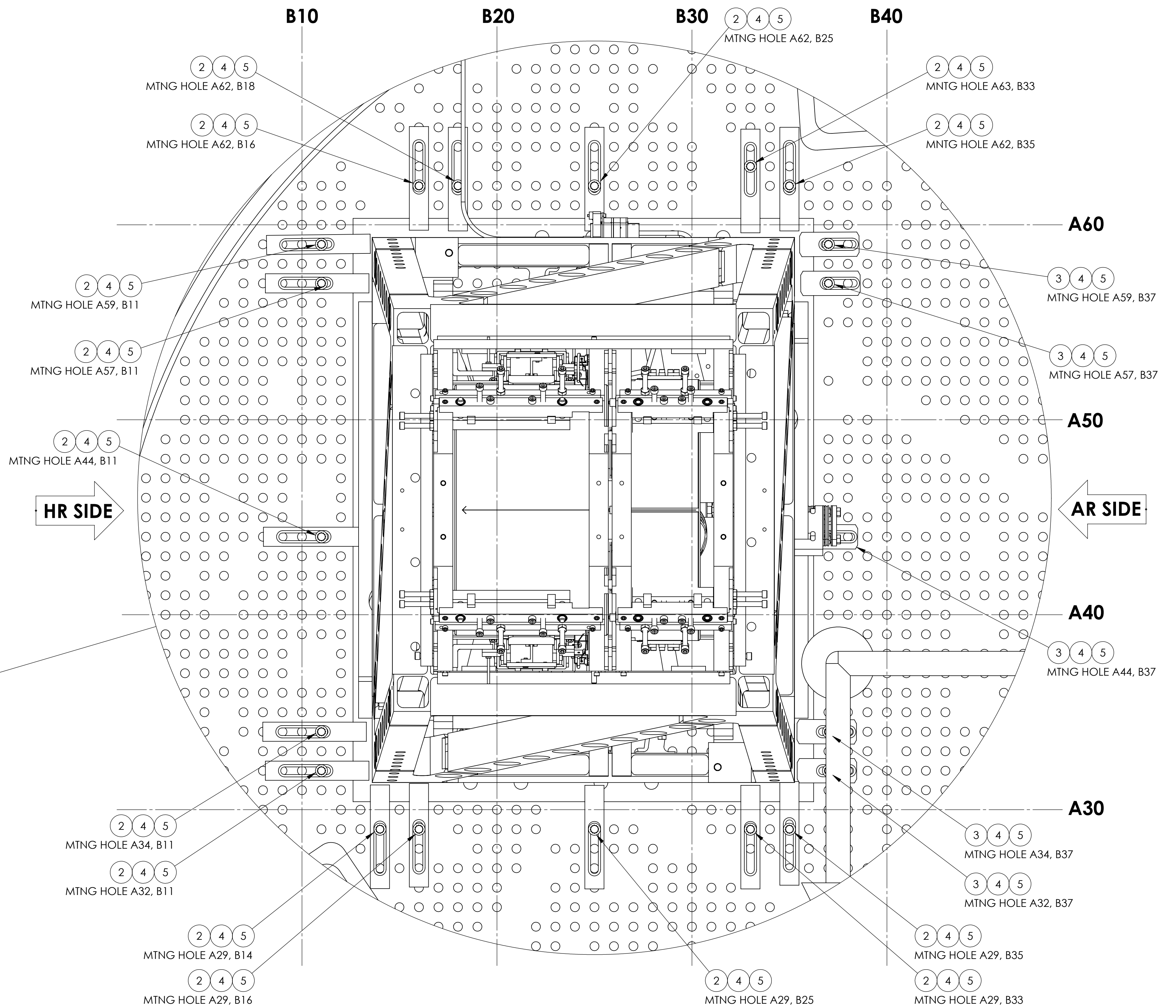
5. REFER TO G1000125 FOR ISI NAMING AND ORIENTATION CONVENTION.
 6. REFER TO D1101271 FOR OPTICAL TABLE HOLE TABULATION CONVENTION



**TOP VIEW
(LOOKING DOWN)**



**BOTTOM VIEW
(LOOKING UP)**

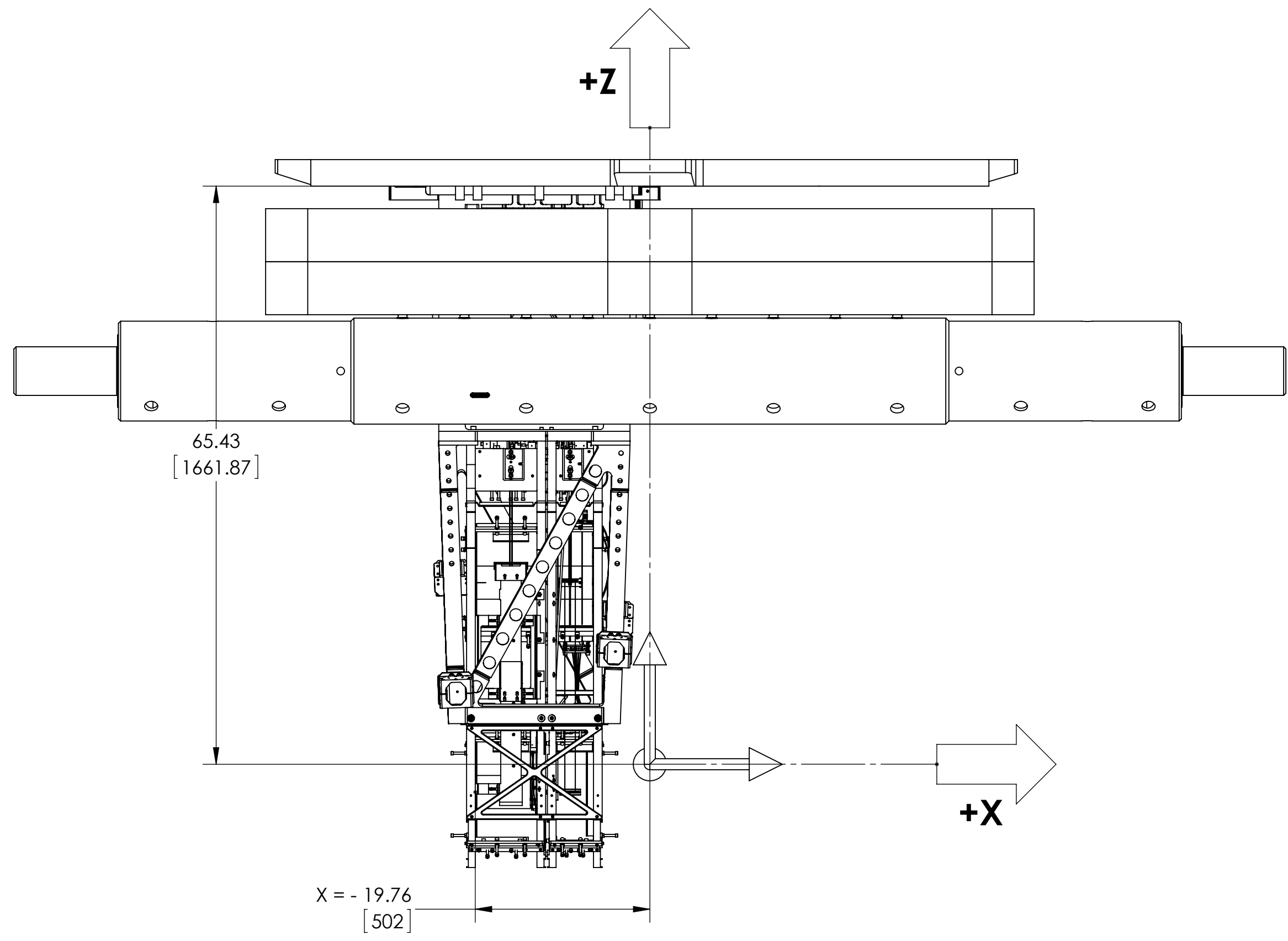


**DETAIL "B"
SCALE 1:3**

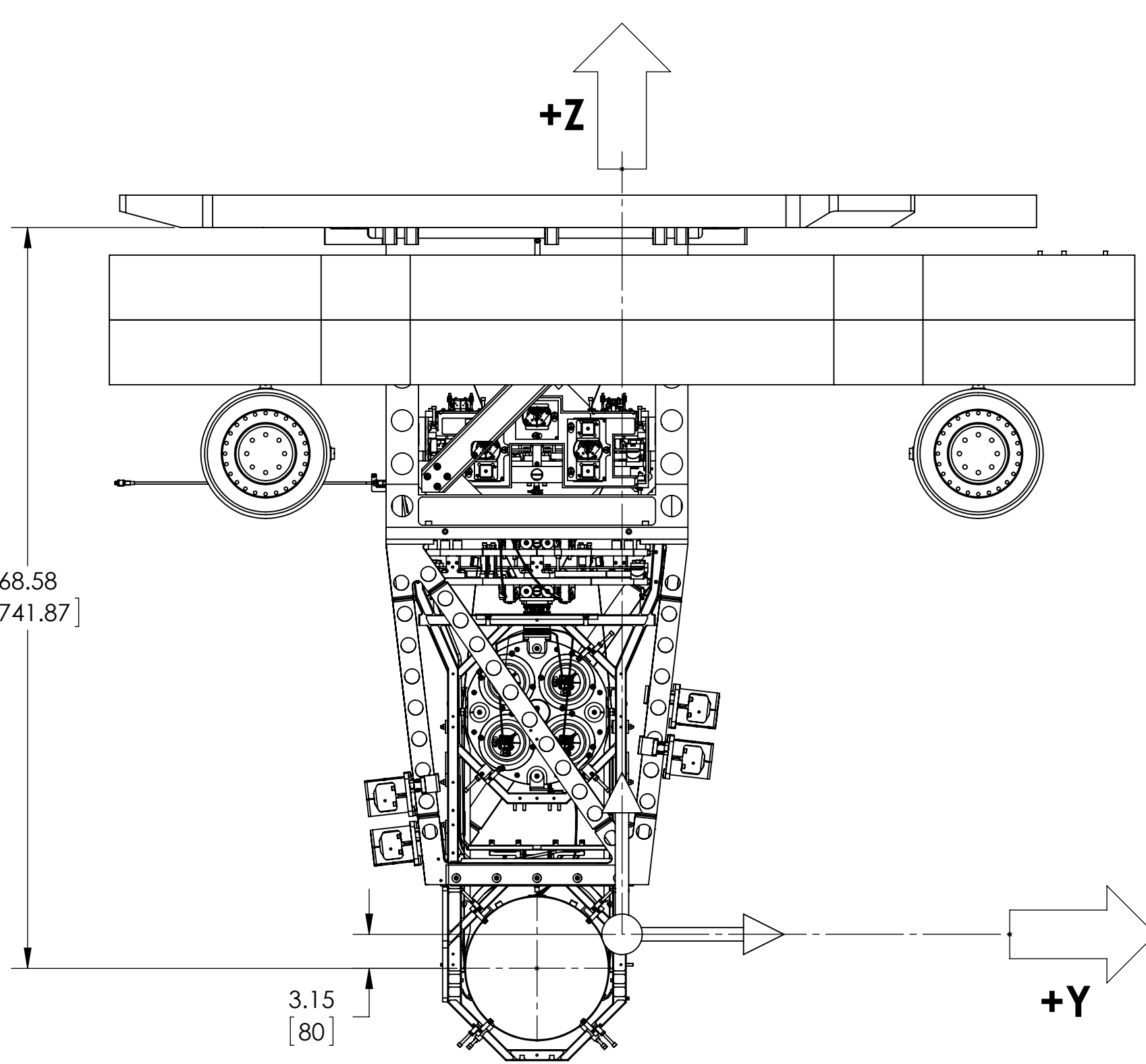
**BOTTOM VIEW (LOOKING UP)
 D0901516 OPTICAL TABLE SHOWN FOR QUAD
 AND DOG CLAMPS LOCATION & ORIENTATION ONLY.
 (VIBRATION ABSORBERS REMOVED FOR CLARITY)**

LIGO CALIFORNIA INSTITUTE OF TECHNOLOGY MASSACHUSETTS INSTITUTE OF TECHNOLOGY		REV.
SIZE DWG. NO.	D0901153	v2
SCALE: 1:16	PROJECTION:	SHEET 3 OF 4

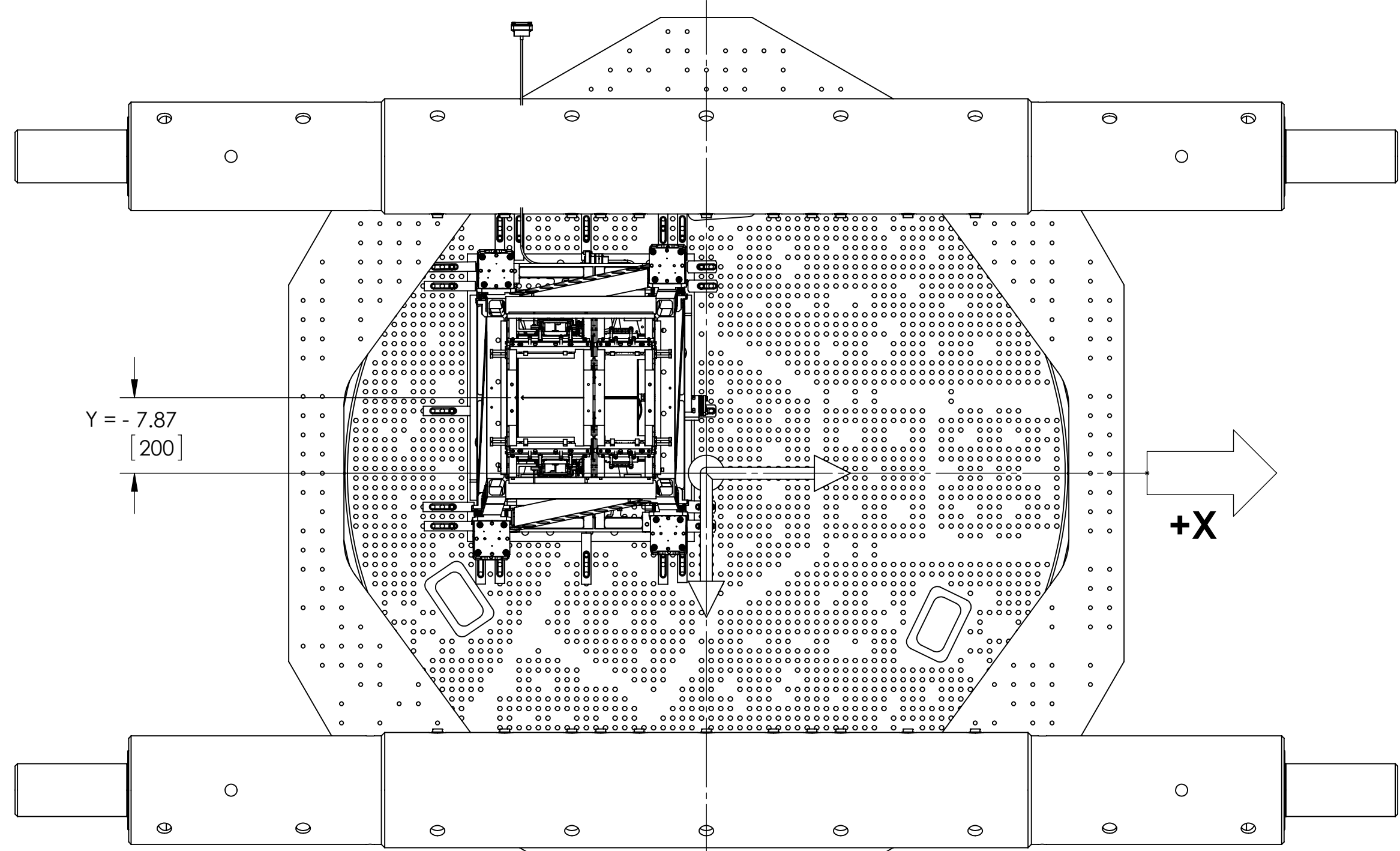
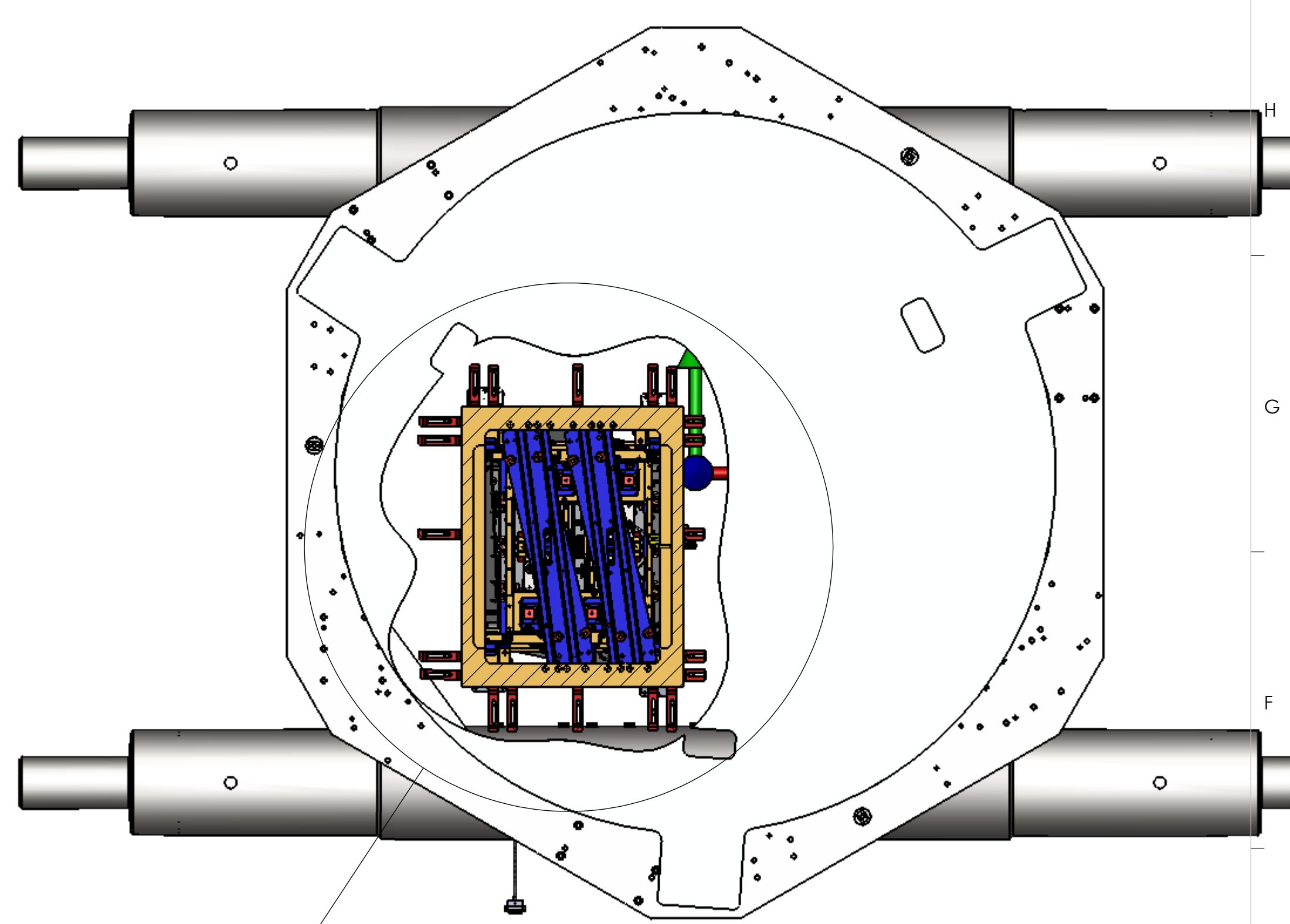
D0901153-ASU-LIGO-SUB-BSC3-H1.XYZ Locs C3 for ETMX. PART PDM REV. X-046. DRAWING PDM REV. X-001



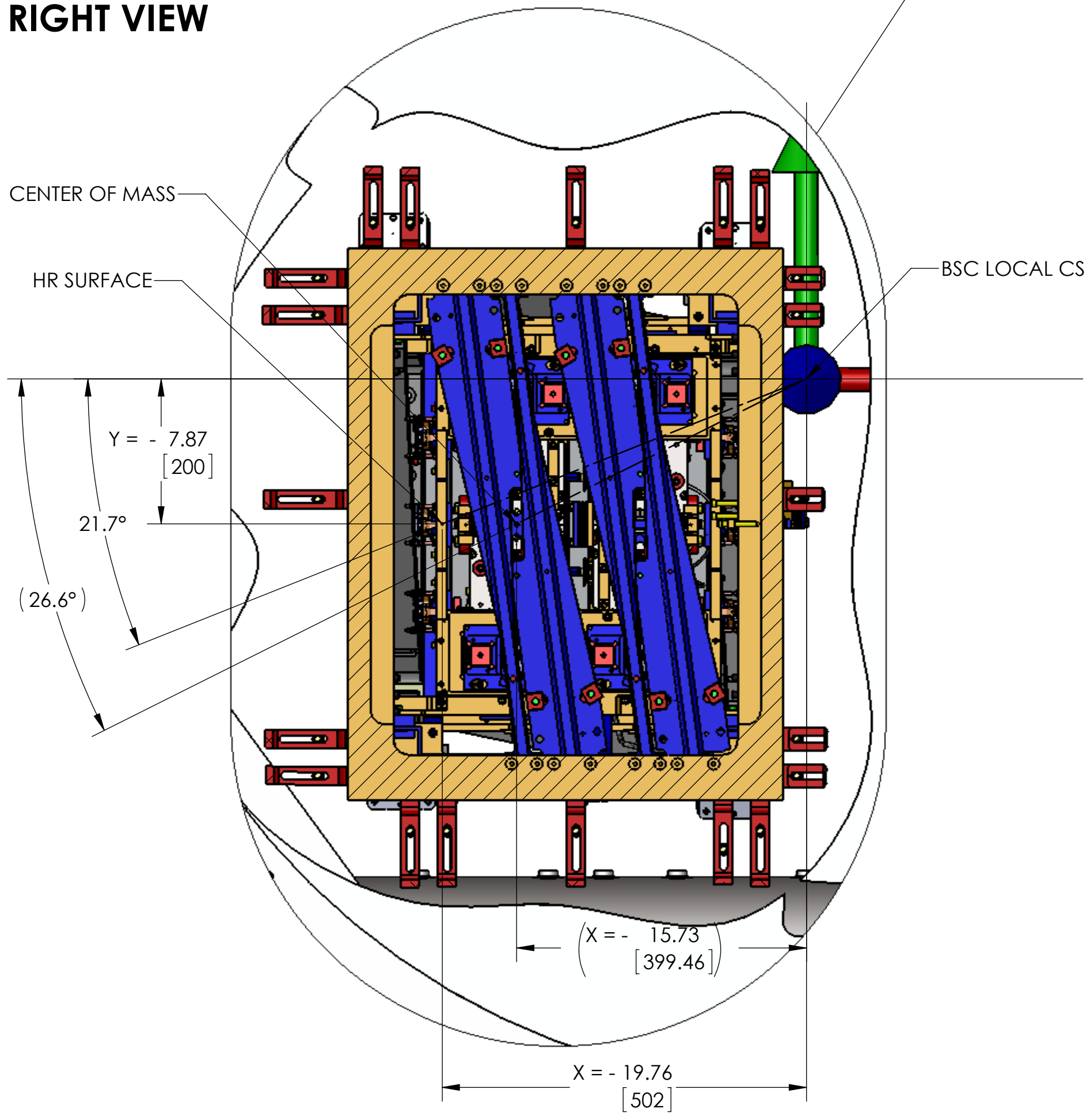
FRONT VIEW



RIGHT VIEW



**BOTTOM VIEW
(LOOKING UP)**



**DETAIL "C"
SCALE 1:6**

**DIMENSIONS IN PARENTHESIS
(REFERENCE DIMENSIONS)
ARE FROM CENTER OF MASS**

LIGO CALIFORNIA INSTITUTE OF TECHNOLOGY MASSACHUSETTS INSTITUTE OF TECHNOLOGY		REV.
SIZE DWG. NO.	D0901153	v2
SCALE: 1:16	PROJECTION:	SHEET 4 OF 4

DD0901153.ASM LIGO S116.BCCH-1.XYZ Local CS for ETMX. PART PDM REV. X-046. DRAWING PDM REV. X-001