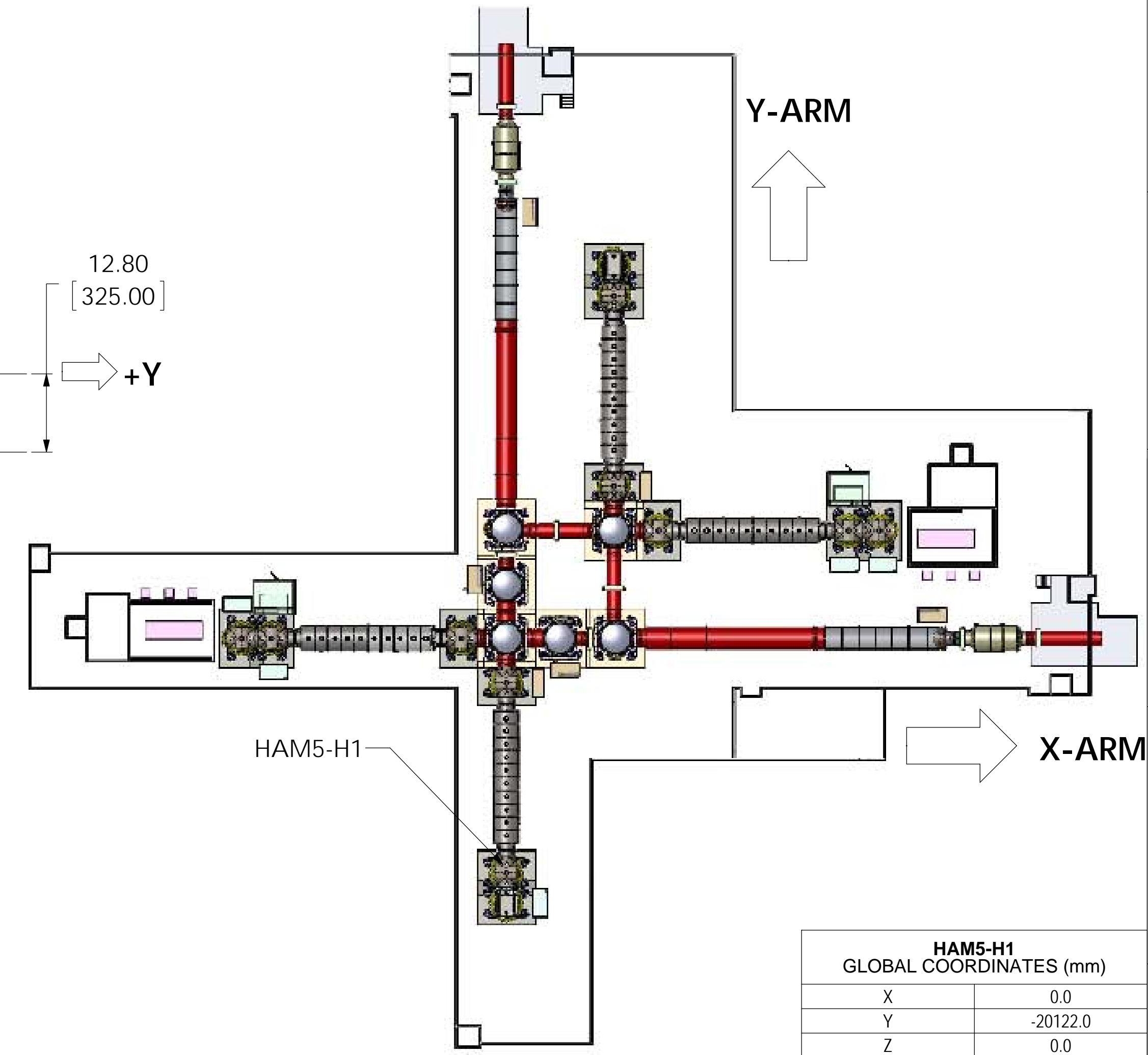
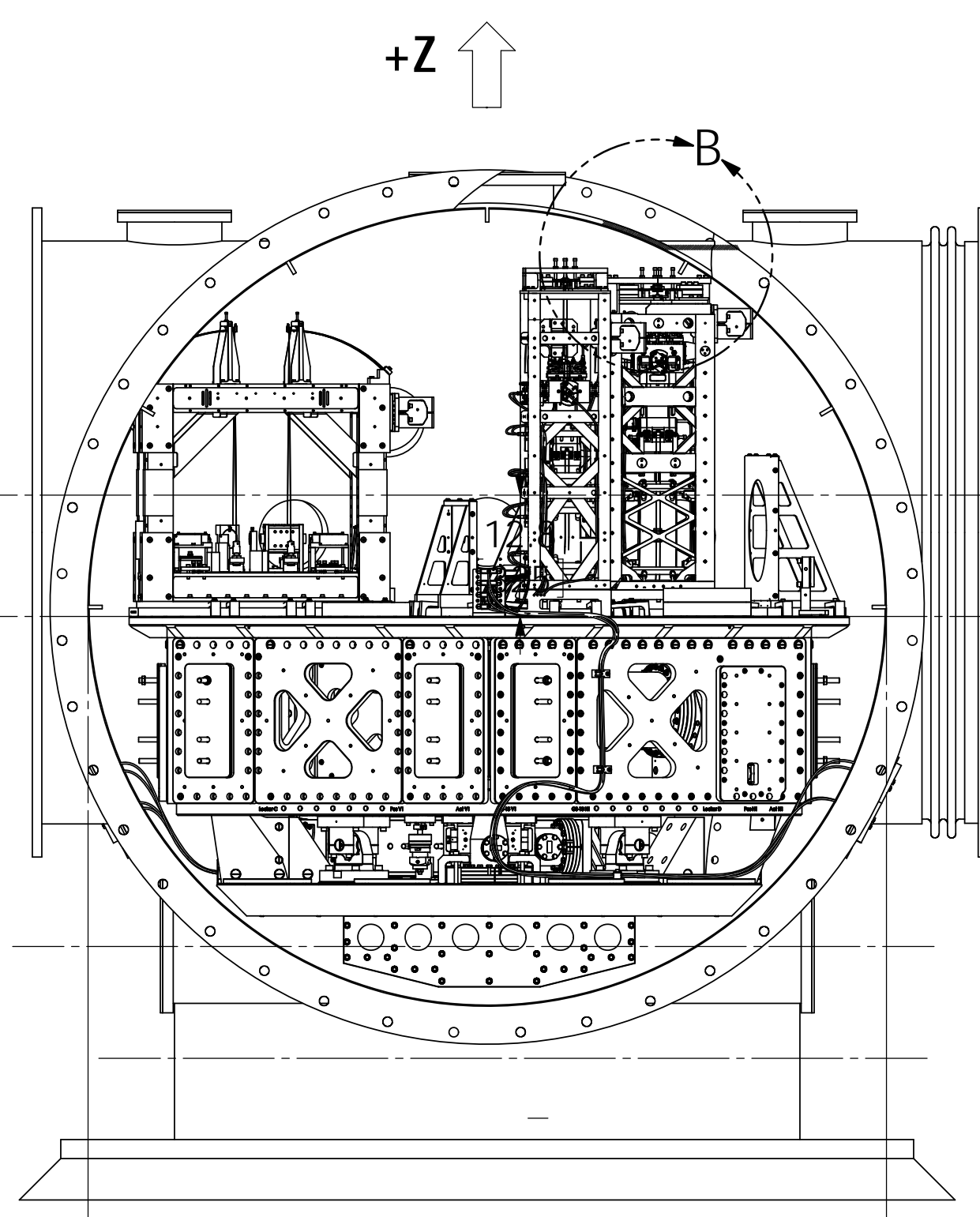
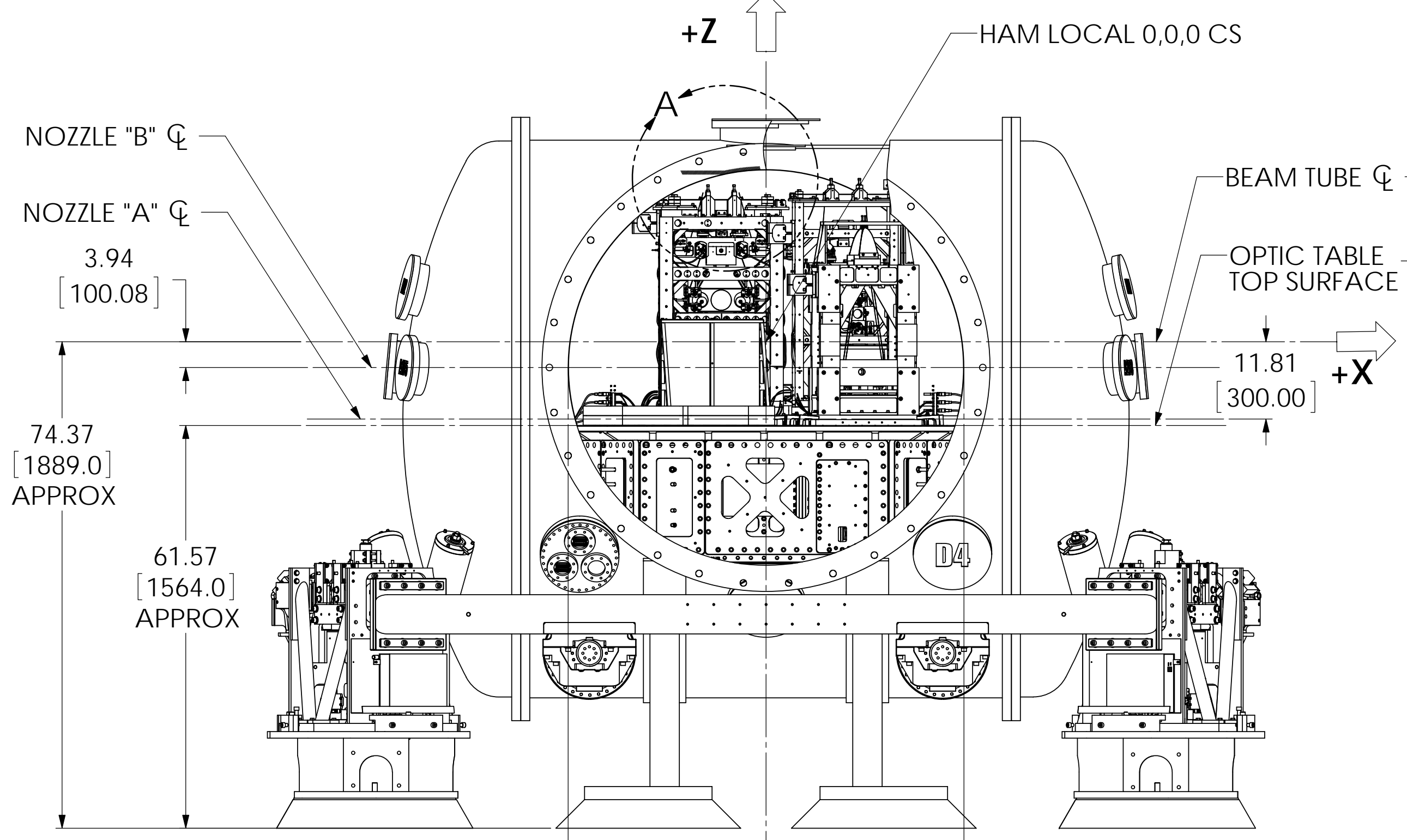
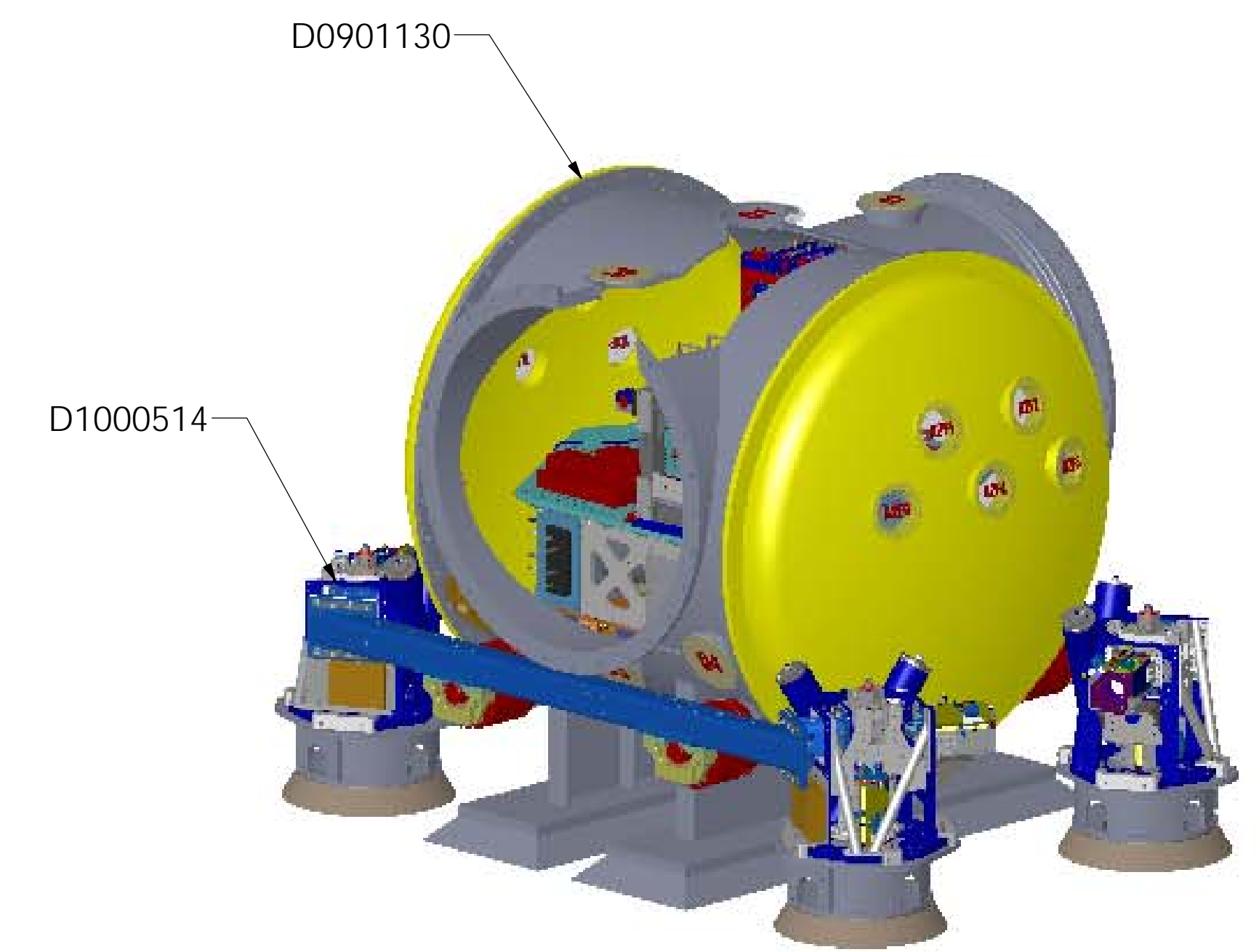
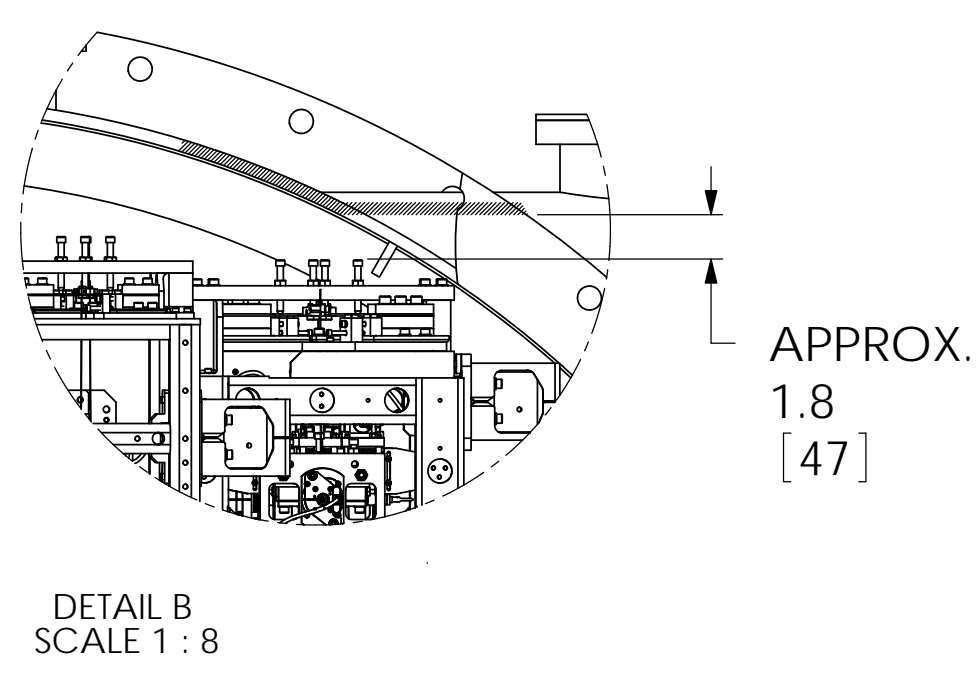
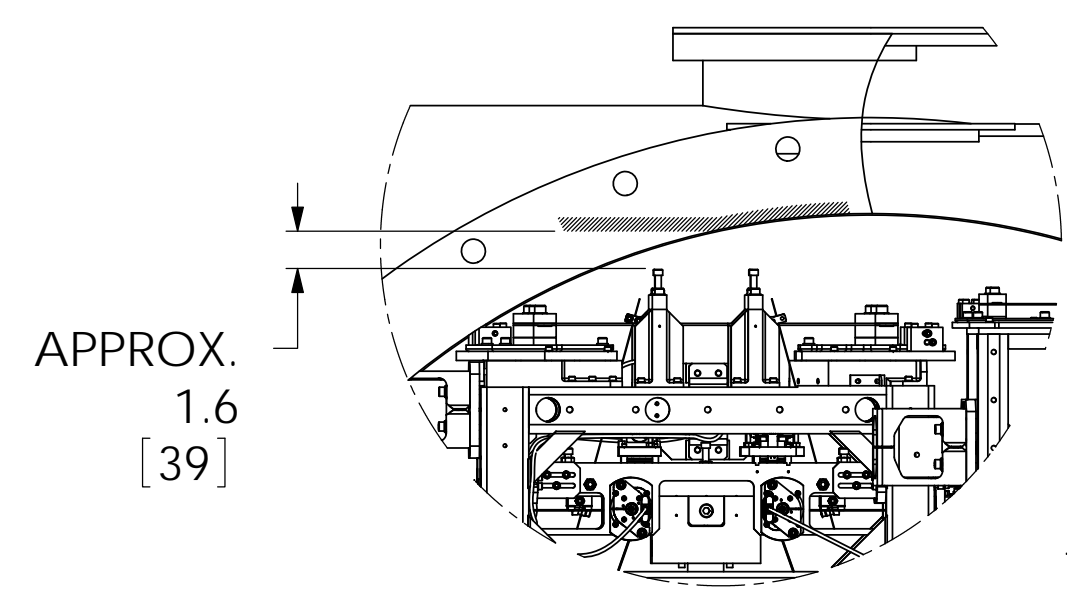
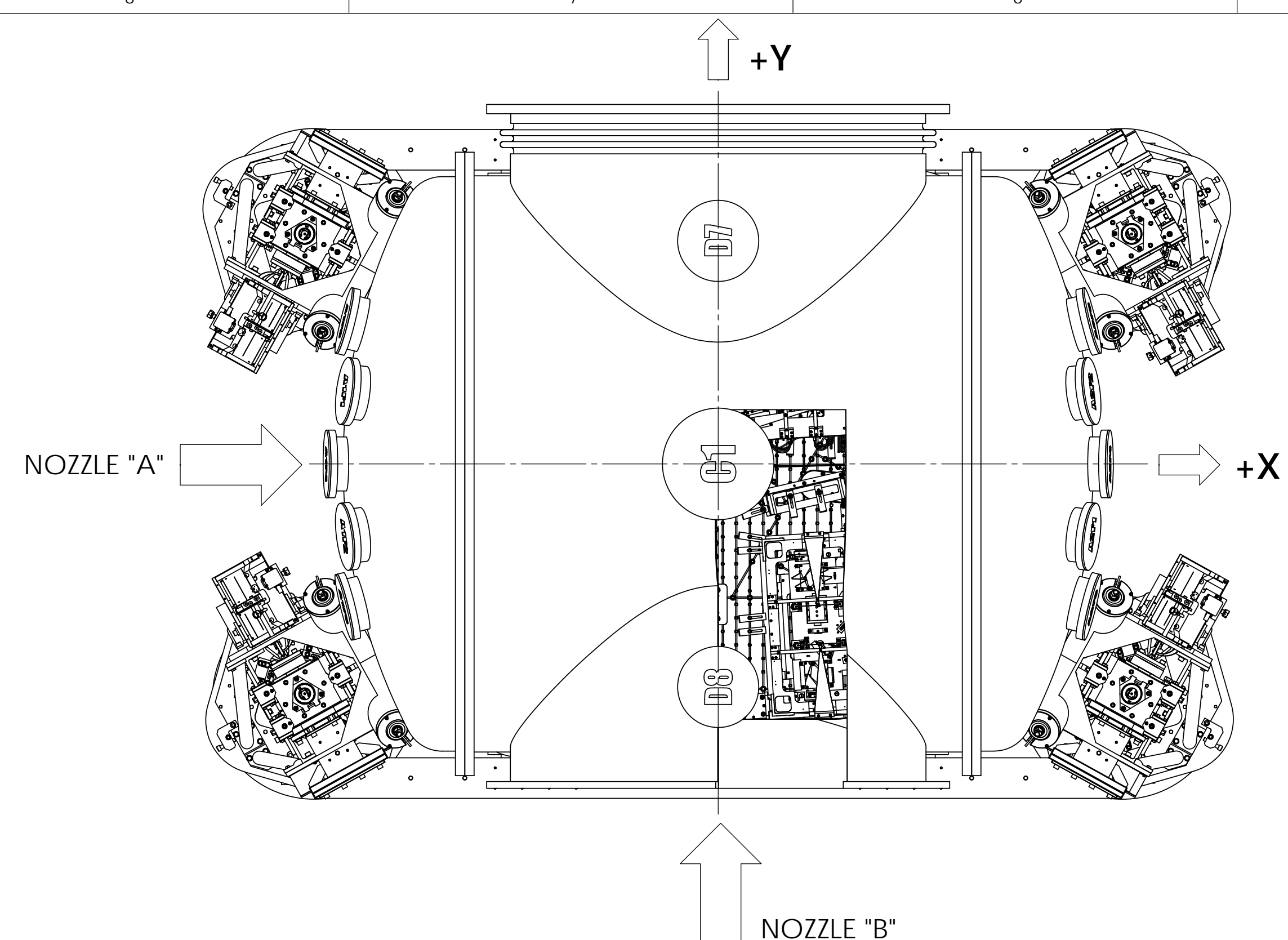


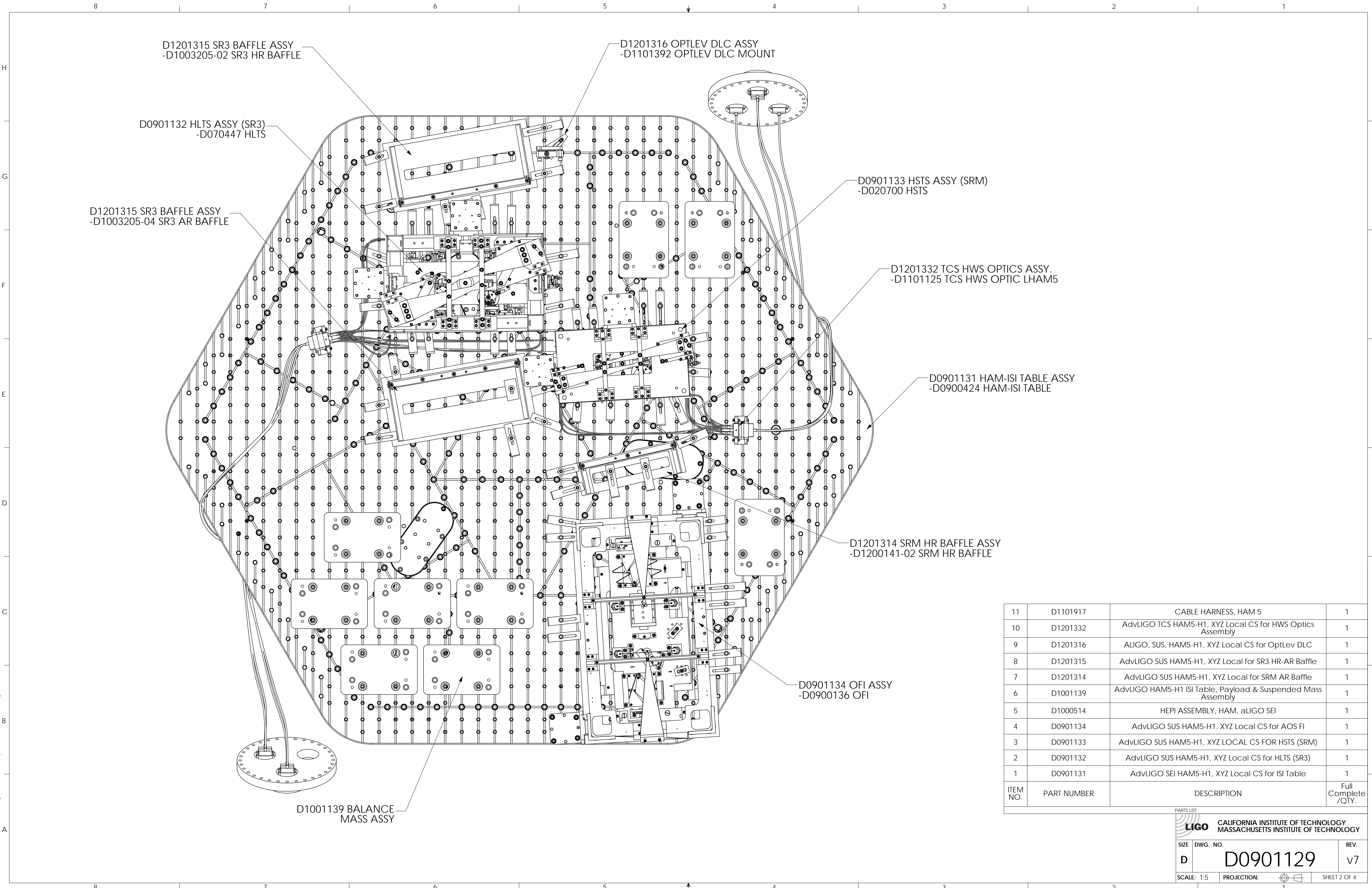
REV.	DATE	DCN #	DRAWING TREE #
v5	14 MAY 2013	E1300401-x0	
v6	22 MAY 2013	E1300472-x0	
v7	27 SEP 2013	E1300716-x0	



HAM5-H1 GLOBAL COORDINATES (mm)	
X	0.0
Y	-20122.0
Z	0.0

NOTES AND TOLERANCES: (UNLESS OTHERWISE SPECIFIED)		LIGO CALIFORNIA INSTITUTE OF TECHNOLOGY MASSACHUSETTS INSTITUTE OF TECHNOLOGY		PART NAME	
MATERIAL	--	SYSTEM	ADVANCED LIGO	ALIGO SYSTEMS, HAM5-H1 TOP LEVEL CHAMBER ASSY	
FINISH	-- μ inch	SUB-SYSTEM	SUS	DESIGNER	ED CHAVEZ
		NEXT ASSY		DRAFTER	ED CHAVEZ
				CHECKER	C. TORRIE
				APPROVAL	SEE DCC
				SCALE:	1:16
				PROJECTION:	SEE DCC
				SIZE	D
				DWG. NO.	D0901129
				REV.	v7
					SHEET 1 OF 4

AutoRecover of D0901129 AdvLIGO Systems, HAM5-H1 Top Level Chamber Assembly, ALL PART PDM REV. X.070, DRAWING PDM REV. X.009



ITEM NO.	PART NUMBER	DESCRIPTION	Full Complete /QTY.
11	D1101917	CABLE HARNESS, HAM 5	1
10	D1201332	AdvLIGO TCS HAM5-H1, XYZ Local CS for HWS Optics Assembly	1
9	D1201316	ALIGO, SUS, HAM5-H1, XYZ Local CS for OptLev DLC	1
8	D1201315	AdvLIGO SUS HAM5-H1, XYZ Local for SR3 HR-AR Baffle	1
7	D1201314	AdvLIGO SUS HAM5-H1, XYZ Local for SRM AR Baffle	1
6	D1001139	AdvLIGO HAM5-H1 ISI Table, Payload & Suspended Mass Assembly	1
5	D1000514	HEPI ASSEMBLY, HAM, aLIGO SEI	1
4	D0901134	AdvLIGO SUS HAM5-H1, XYZ Local CS for AOS FI	1
3	D0901133	AdvLIGO SUS HAM5-H1, XYZ LOCAL CS FOR HSTS (SRM)	1
2	D0901132	AdvLIGO SUS HAM5-H1, XYZ Local CS for HLTS (SR3)	1
1	D0901131	AdvLIGO SEI HAM5-H1, XYZ Local CS for ISI Table	1

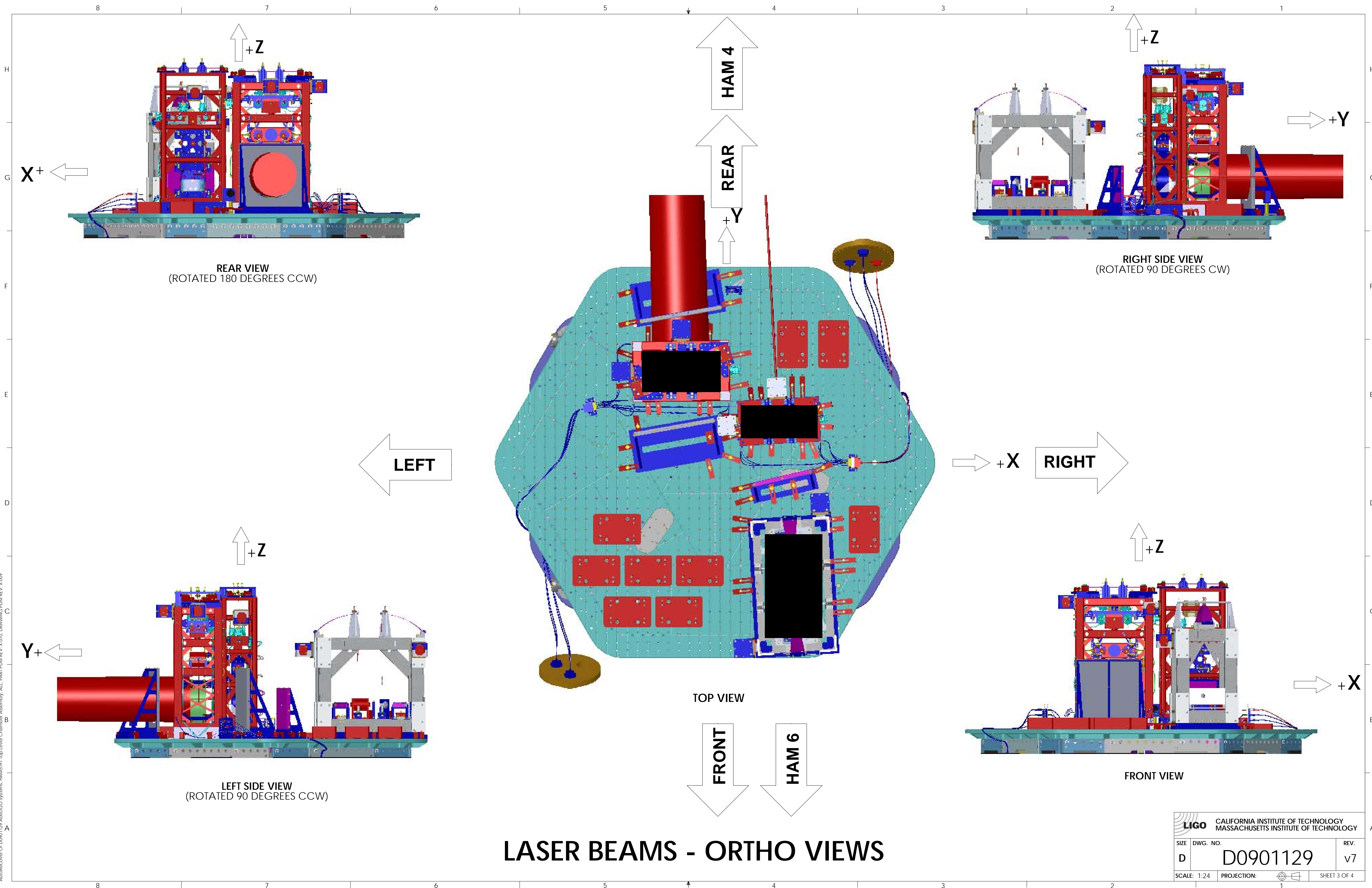
PARTS LIST

LIGO CALIFORNIA INSTITUTE OF TECHNOLOGY
MASSACHUSETTS INSTITUTE OF TECHNOLOGY

SIZE	DWG. NO.	REV.
D	D0901129	v7

SCALE: 1:5 PROJECTION: SHEET 2 OF 4

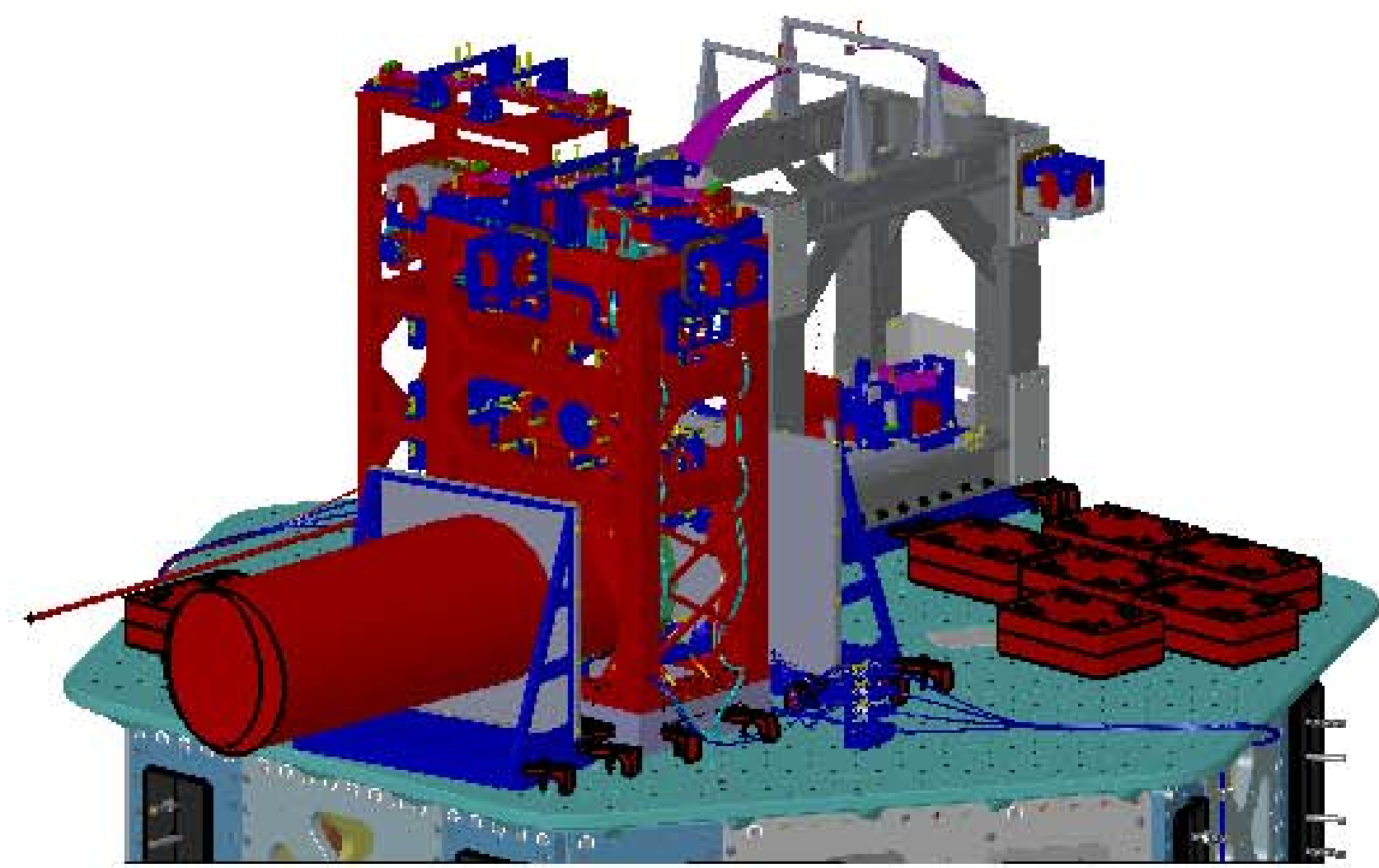
AutoRecover of D:\0901129 AdvLIGO Systems, HAM5-H1 Top Level Chamber Assembly, ALL PART PDM REV. X.070, DRAWING PDM REV. X.009



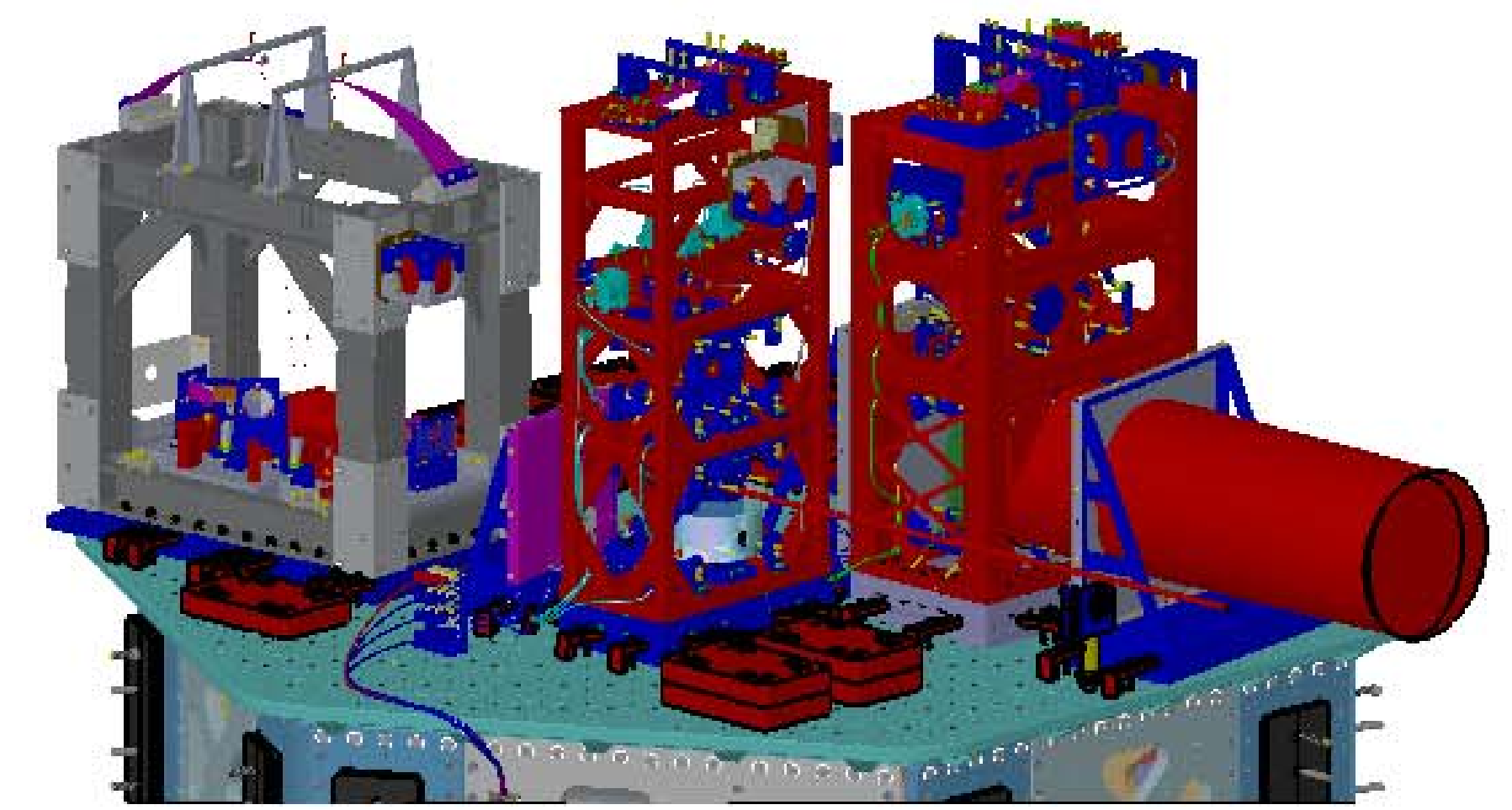
LASER BEAMS - ORTHO VIEWS

LIGO CALIFORNIA INSTITUTE OF TECHNOLOGY MASSACHUSETTS INSTITUTE OF TECHNOLOGY	
SIZE DWG. NO.	REV.
D D0901129	v7
SCALE: 1:24	PROJECTION:
SHEET 3 OF 4	

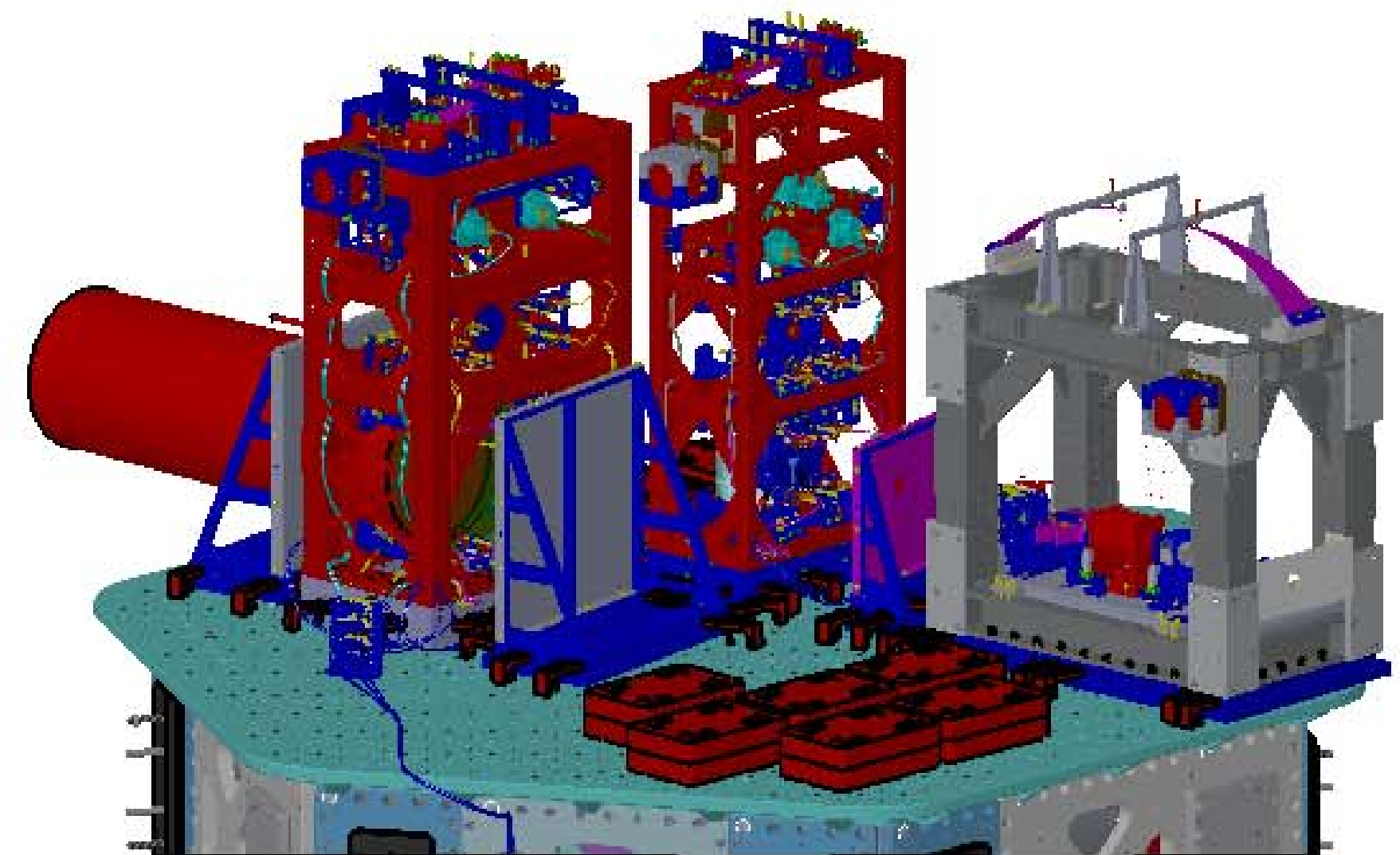
AutoRecover: C:\D901129\Adulico Systems\HAM6-H1 Top Level Chamber Assembly - ALL PART PDM\REV-X.070.DRAWING PDM REV-X.009



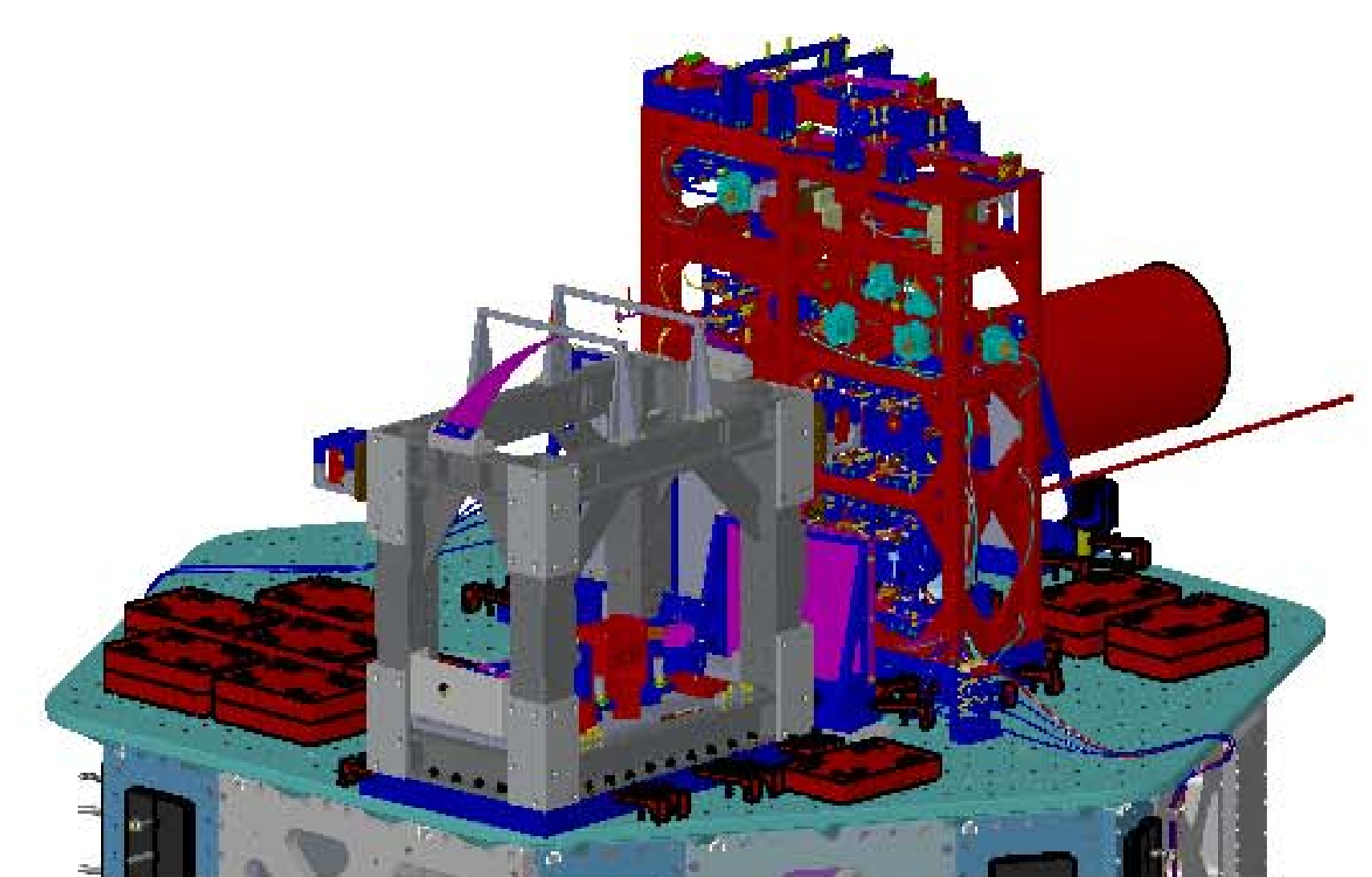
ISO REAR - LEFT



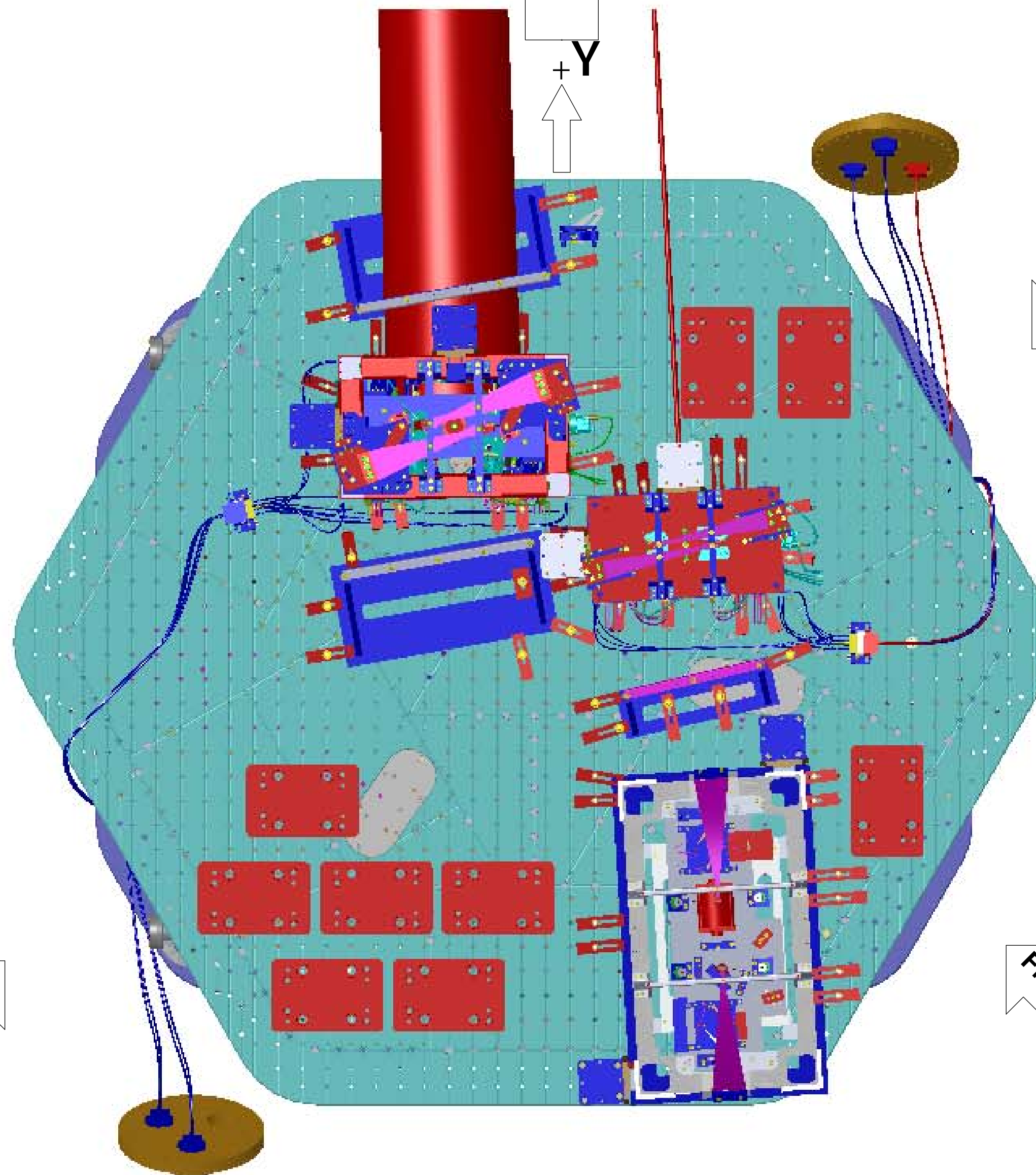
ISO REAR - RIGHT



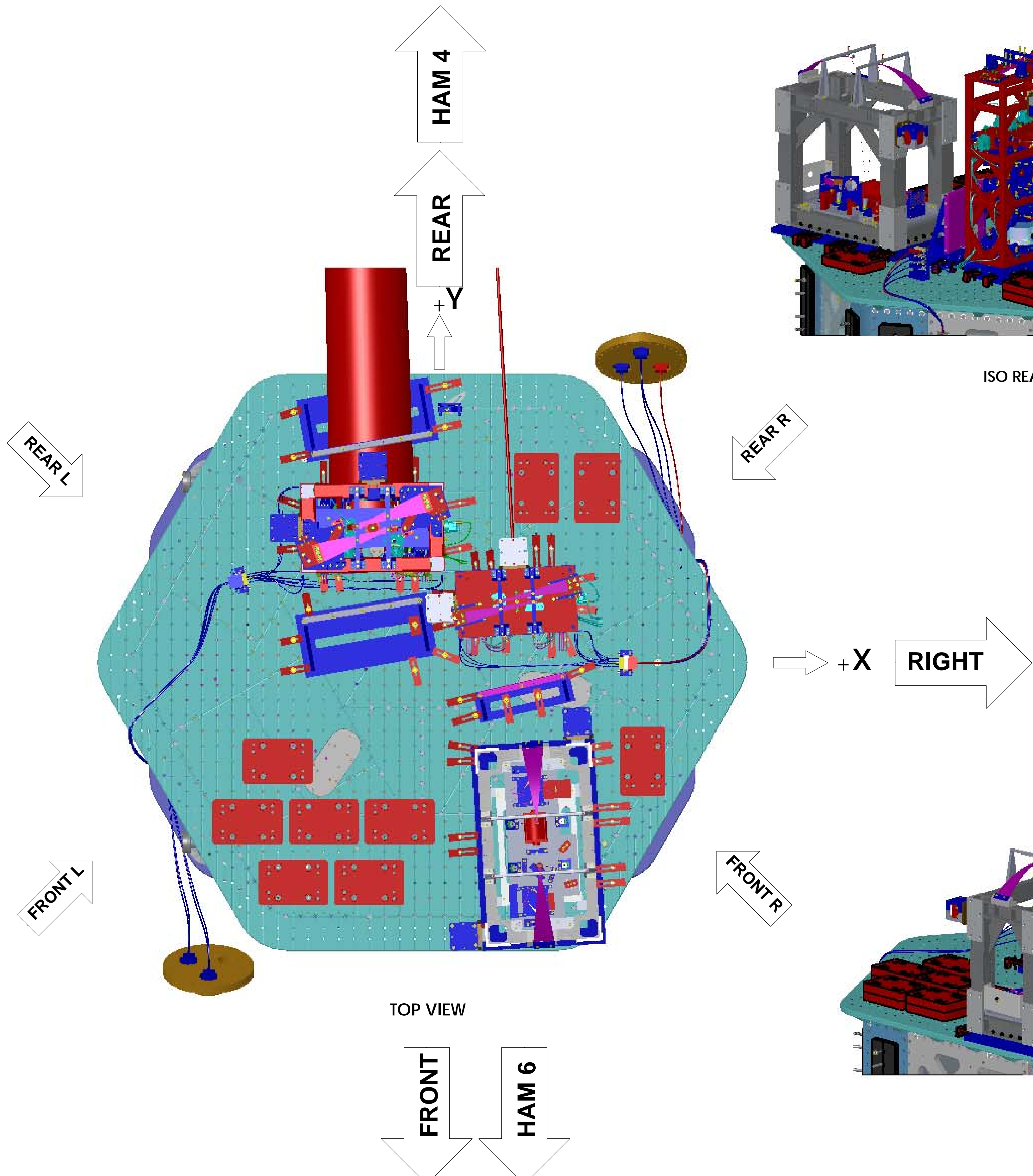
ISO FRONT - LEFT



ISO FRONT - RIGHT



TOP VIEW



LASER BEAMS - ISO VIEWS

LIGO CALIFORNIA INSTITUTE OF TECHNOLOGY MASSACHUSETTS INSTITUTE OF TECHNOLOGY	
SIZE DWG. NO.	REV.
D D0901129	v7
SCALE: 1:24	PROJECTION:
SHEET 4 OF 4	

AutoRecover: C:\D0901129_AudioCD Systems - HAM-H1 - Top Level Chamber Assembly - ALL PART PDM REV. X.070 - DRAWING PDM REV. X.009