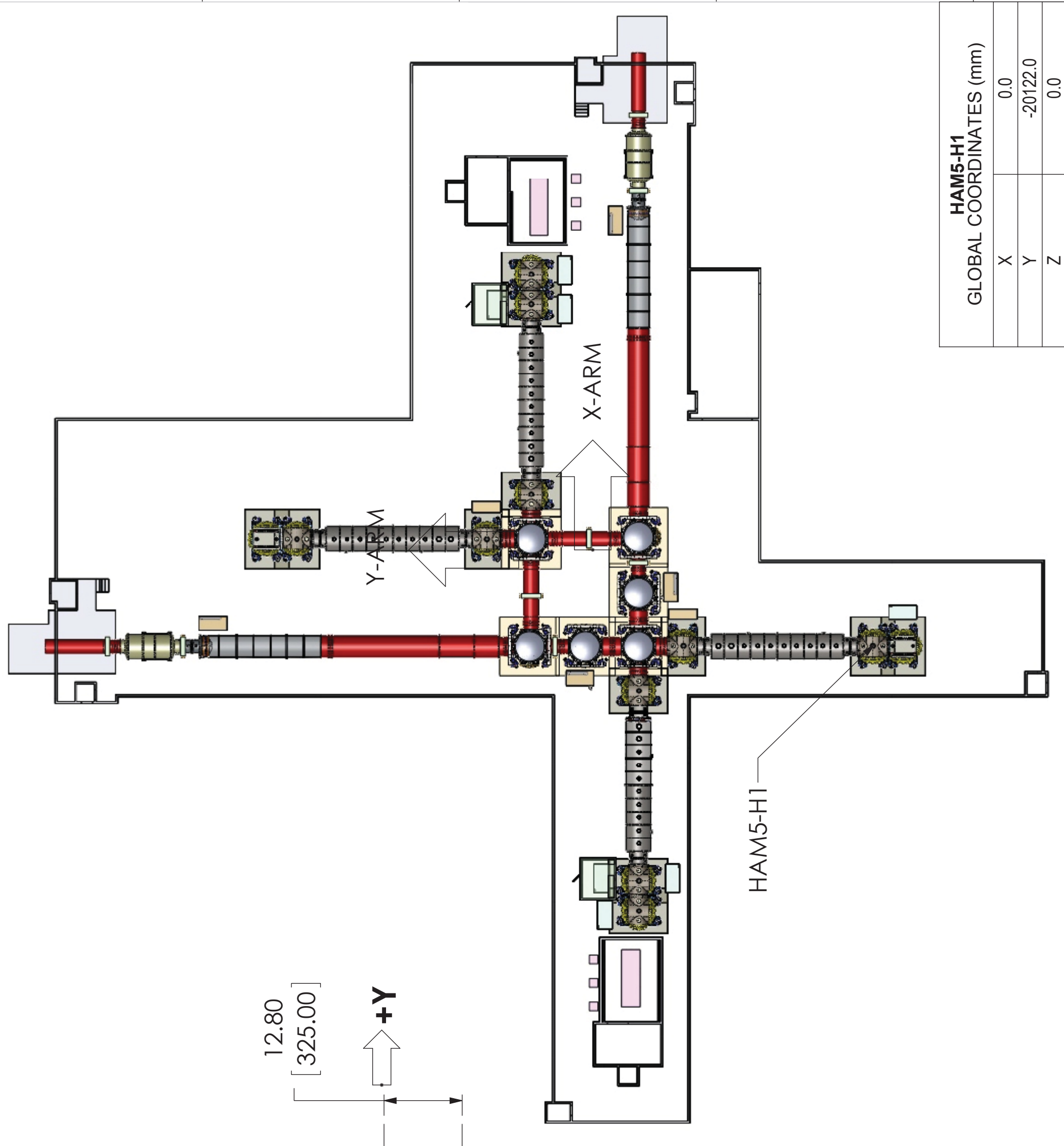
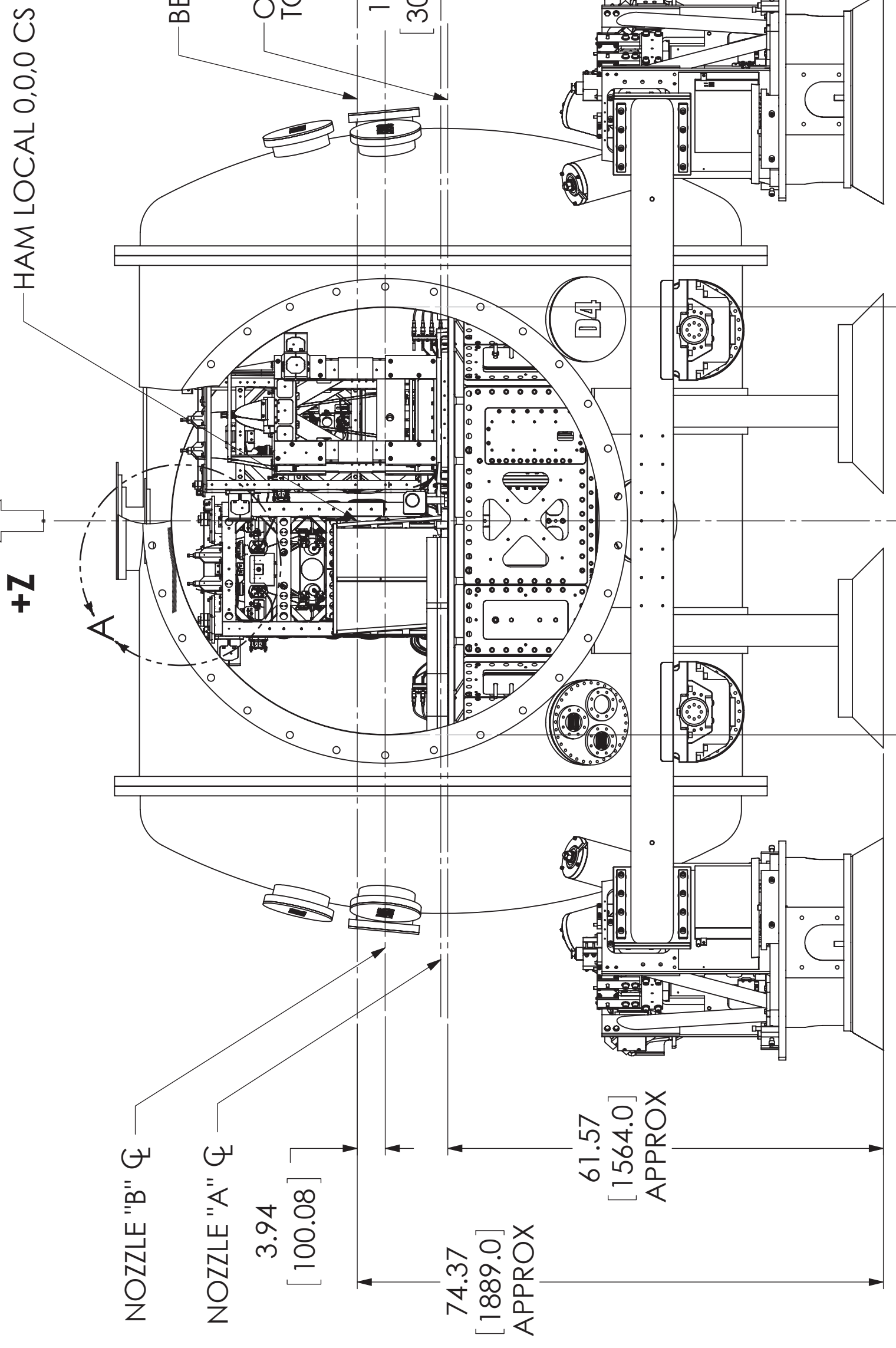
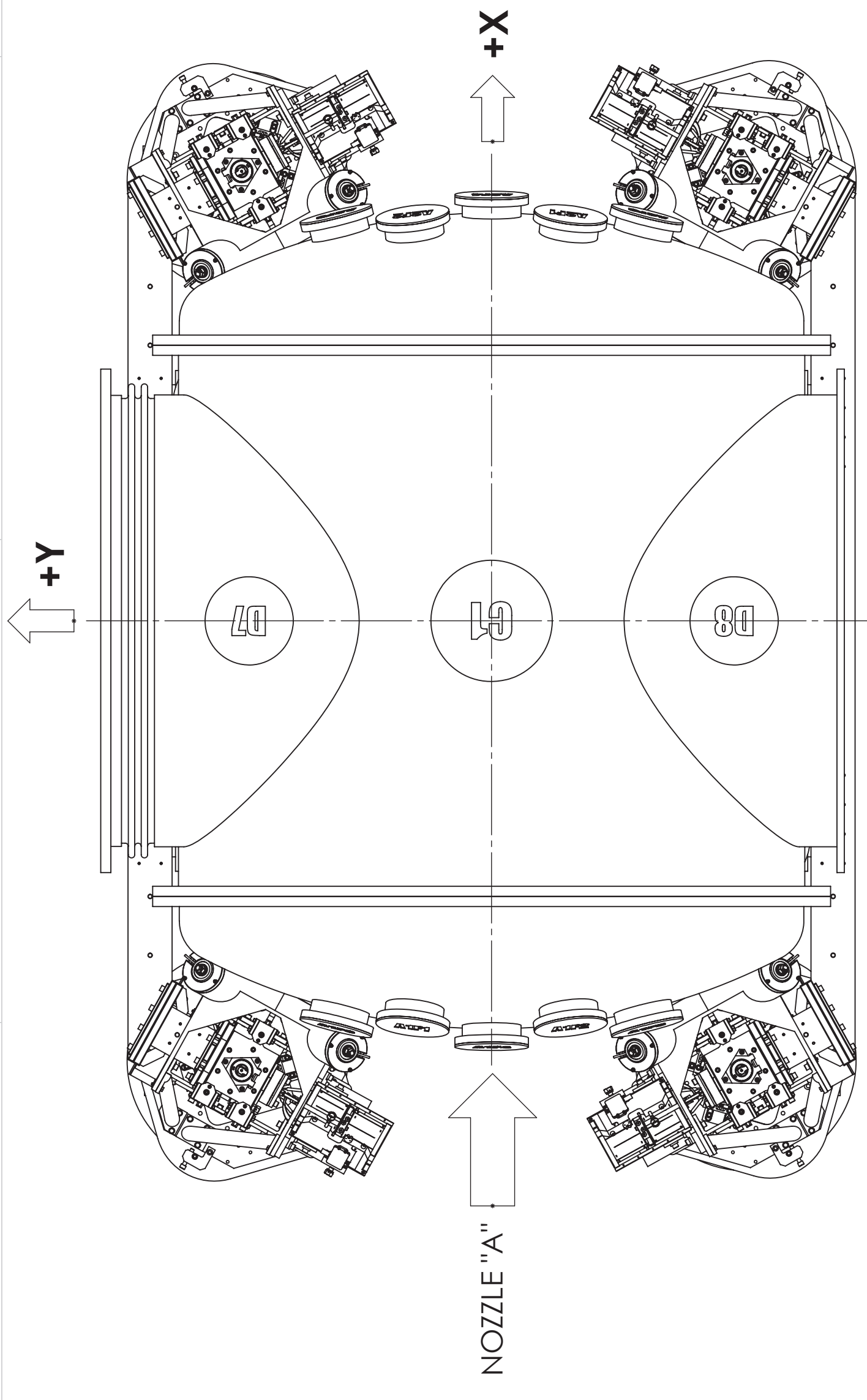
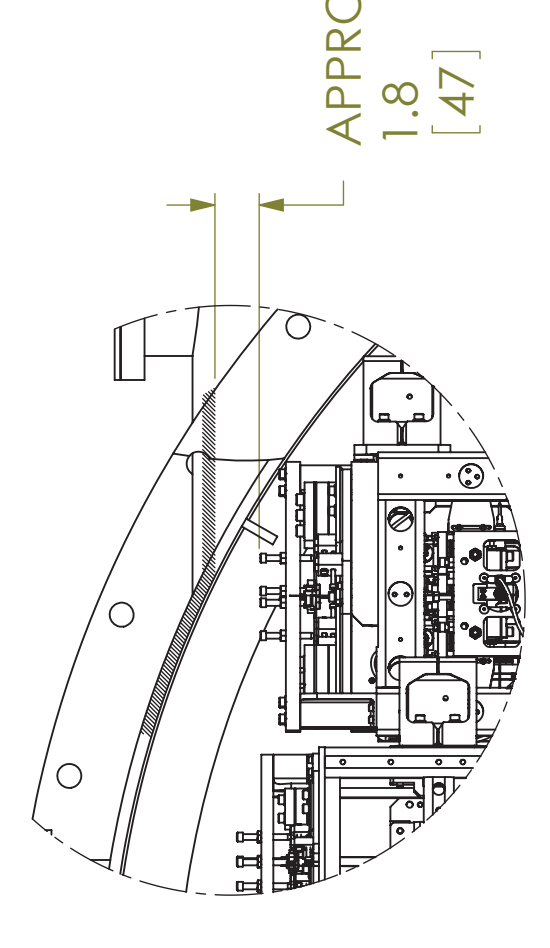
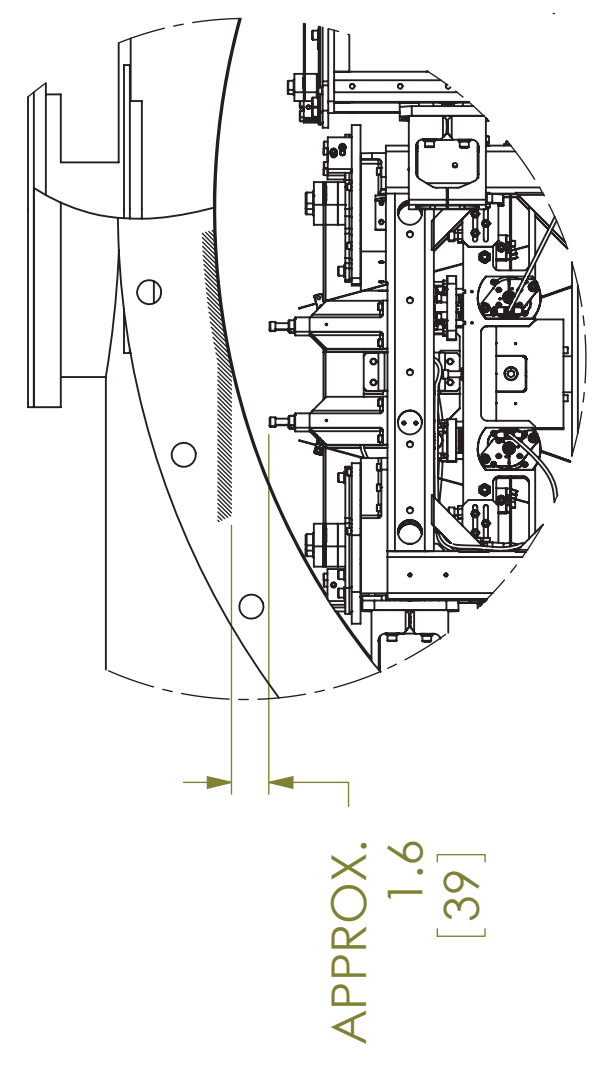
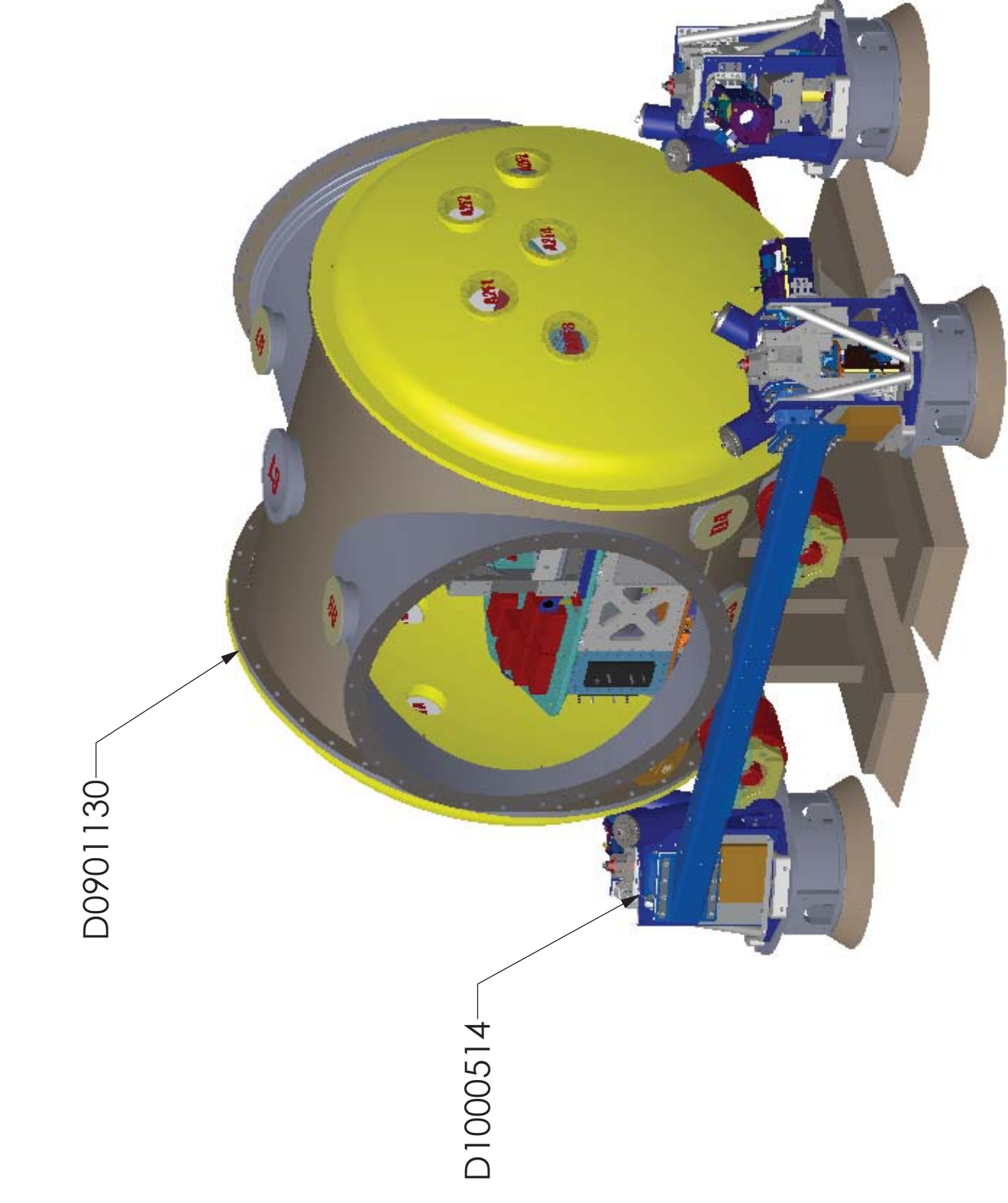


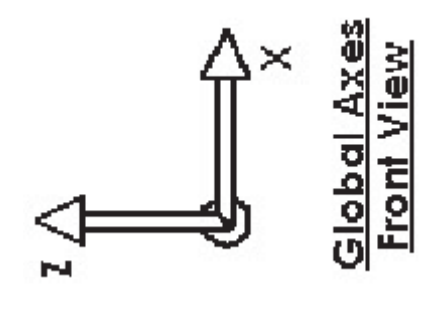
REV.	DATE	DESCRIPTION	DRAWING TREE #
V3	28 MAY 2011		
V2	20 OCT 2009		
V4	27 MAR 2013		

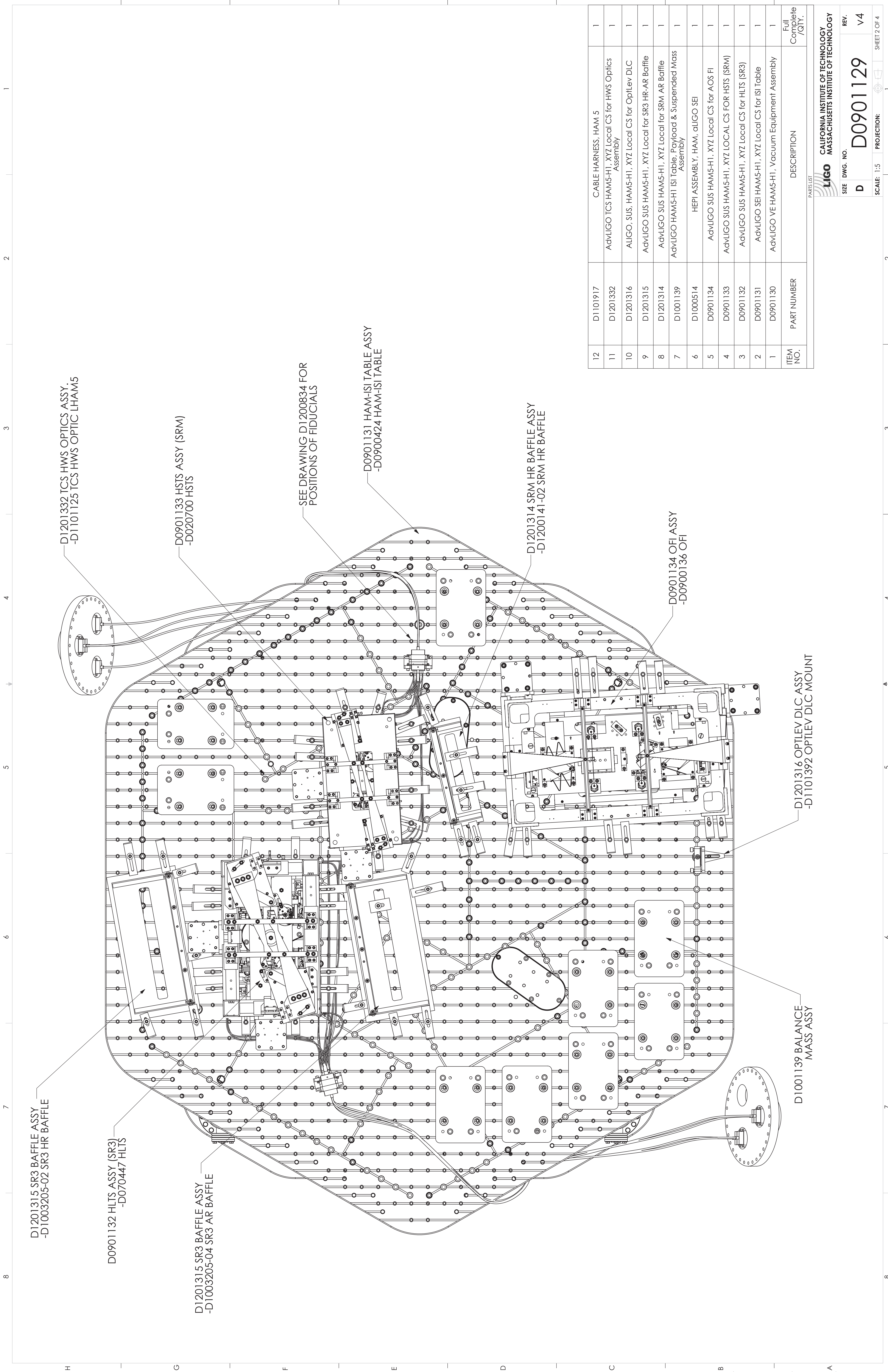


HAM5-H1 GLOBAL COORDINATES (mm)	
X	0.0
Y	-20122.0
Z	0.0

NOTES AND TOLERANCES: (UNLESS OTHERWISE SPECIFIED)

LIGO CALIFORNIA INSTITUTE OF TECHNOLOGY MASSACHUSETTS INSTITUTE OF TECHNOLOGY		PART NAME	
ADVANCED LIGO	SUS	ALIGO SYSTEMS, HAM5-H1 TOP LEVEL CHAMBER ASSY	
MATERIAL	FINISH	SIZE	DWG. NO.
	---	D	D0901129
	---	SCALE	1:16
	---	PROJECTION	1st Angle
	---	REV.	V4
	---	SHEET	1 OF 4





ITEM NO.	PART NUMBER	DESCRIPTION	Full Complete / QTY.
12	D1101917	CABLE HARNESS, HAM 5	1
11	D1201332	AdvLIGO TCS HAM5-H1, XYZ Local CS for HWS Optics Assembly	1
10	D1201316	ALIGO, SUS, HAM5-H1, XYZ Local CS for OptLev DLC	1
9	D1201315	AdvLIGO SUS HAM5-H1, XYZ Local for SR3 HR-AR Baffle	1
8	D1201314	AdvLIGO SUS HAM5-H1, XYZ Local for SRM AR Baffle	1
7	D1001139	AdvLIGO HAM5-H1 ISI Table, Payload & Suspended Mass Assembly	1
6	D1000514	HEPI ASSEMBLY, HAM, aLIGO SEI	1
5	D0901134	AdvLIGO SUS HAM5-H1, XYZ Local CS for AOS FI	1
4	D0901133	AdvLIGO SUS HAM5-H1, XYZ LOCAL CS FOR HSTS (SRM)	1
3	D0901132	AdvLIGO SUS HAM5-H1, XYZ Local CS for HLTS (SR3)	1
2	D0901131	AdvLIGO SEI HAM5-H1, XYZ Local CS for ISI Table	1
1	D0901130	AdvLIGO VE HAM5-H1, Vacuum Equipment Assembly	1

PARTS LIST

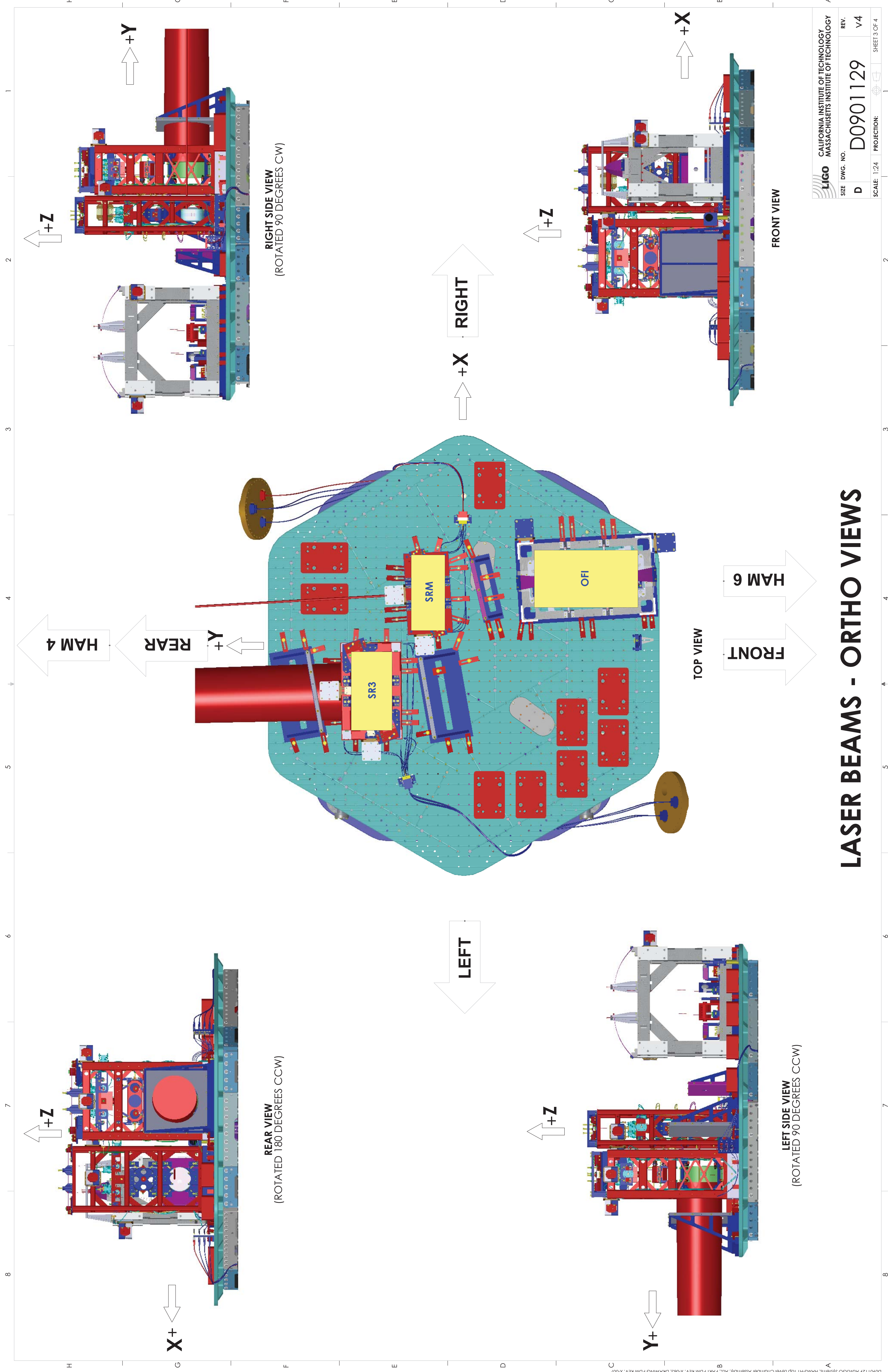
CALIFORNIA INSTITUTE OF TECHNOLOGY
 MASSACHUSETTS INSTITUTE OF TECHNOLOGY

SIZE DWG. NO. **D** **D0901129**

REV. **V4**

SCALE: 1:5 PROJECTION:

SHEET 2 OF 4



RIGHT SIDE VIEW
(ROTATED 90 DEGREES CW)

FRONT VIEW

TOP VIEW

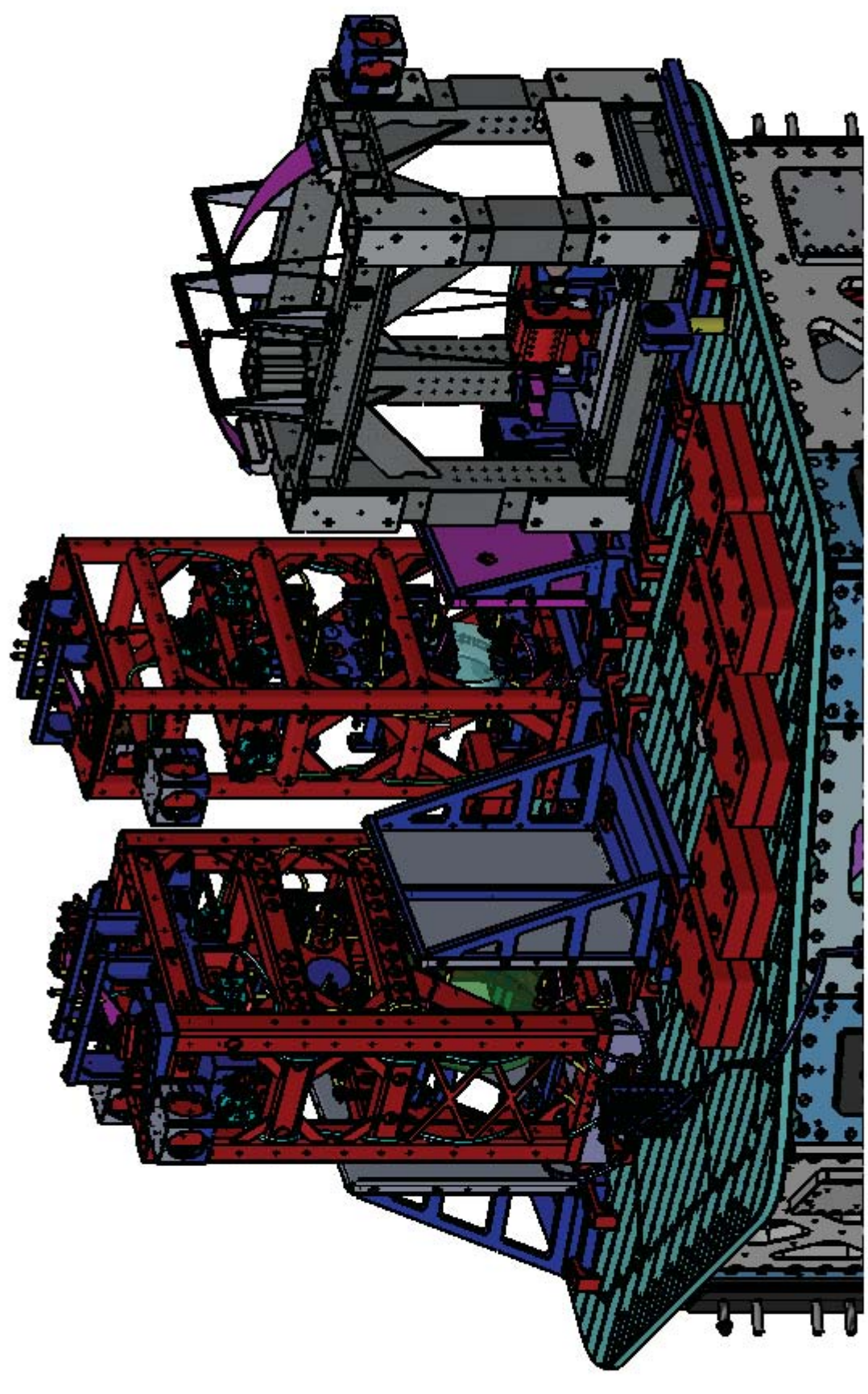
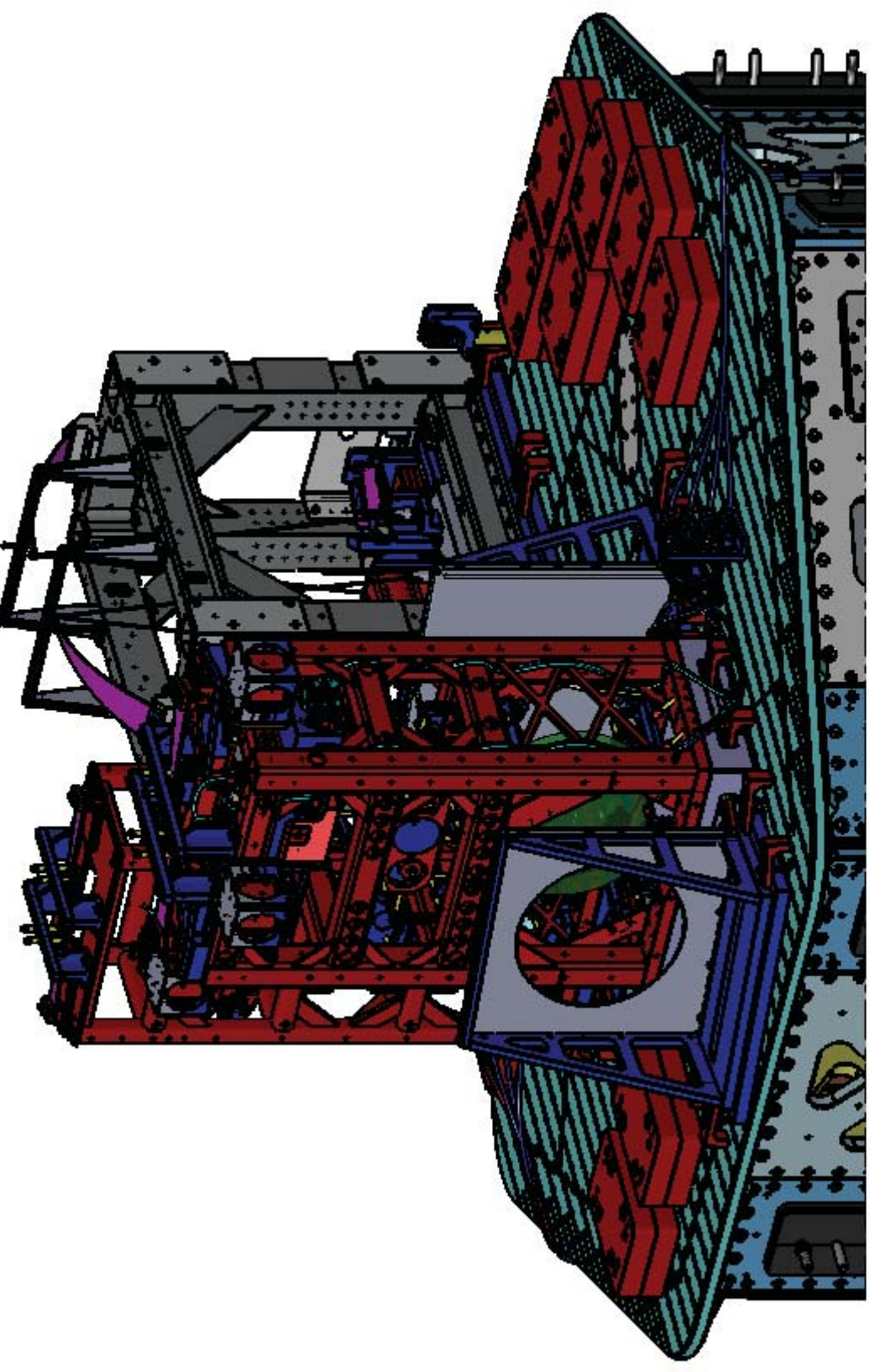
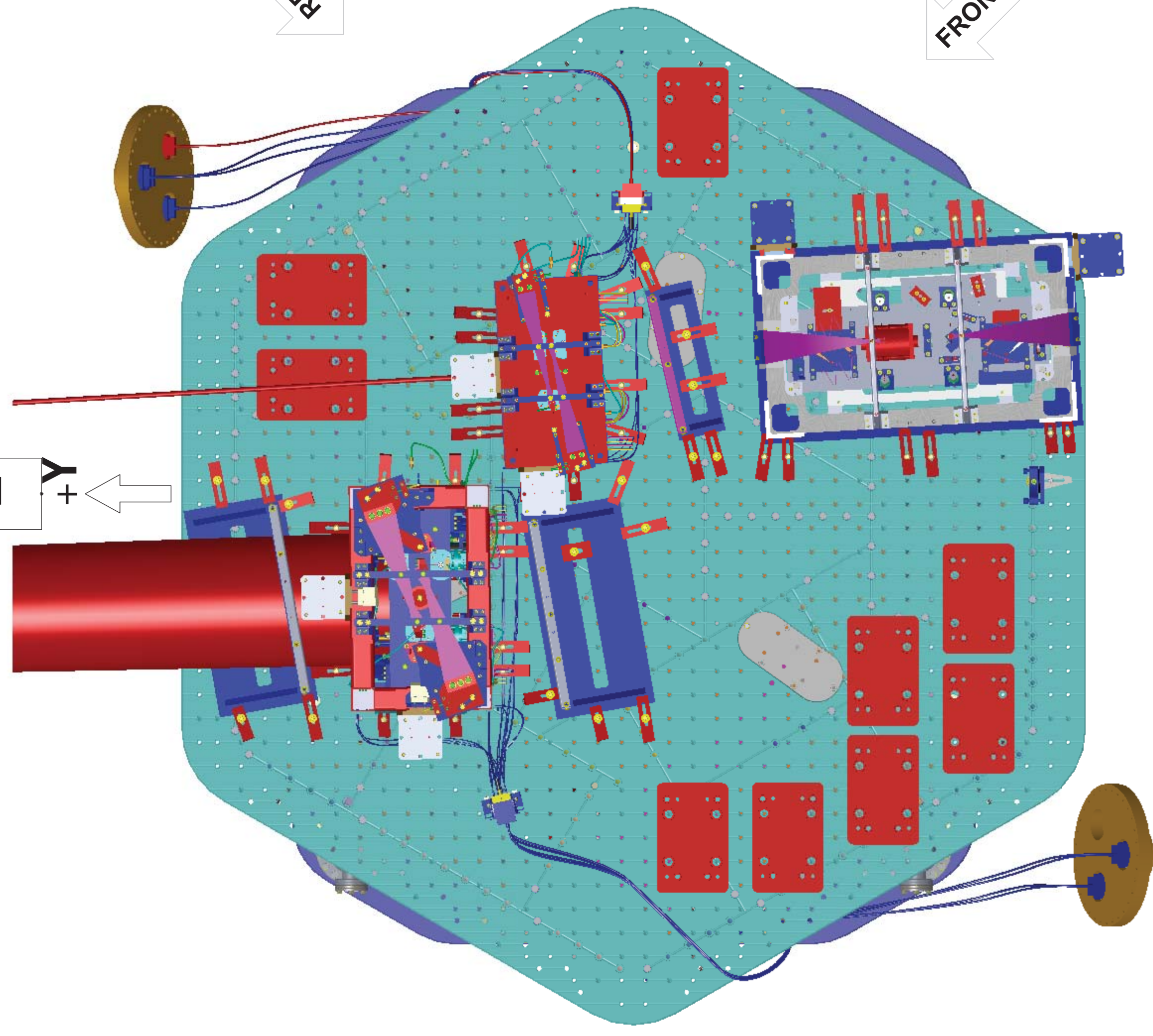
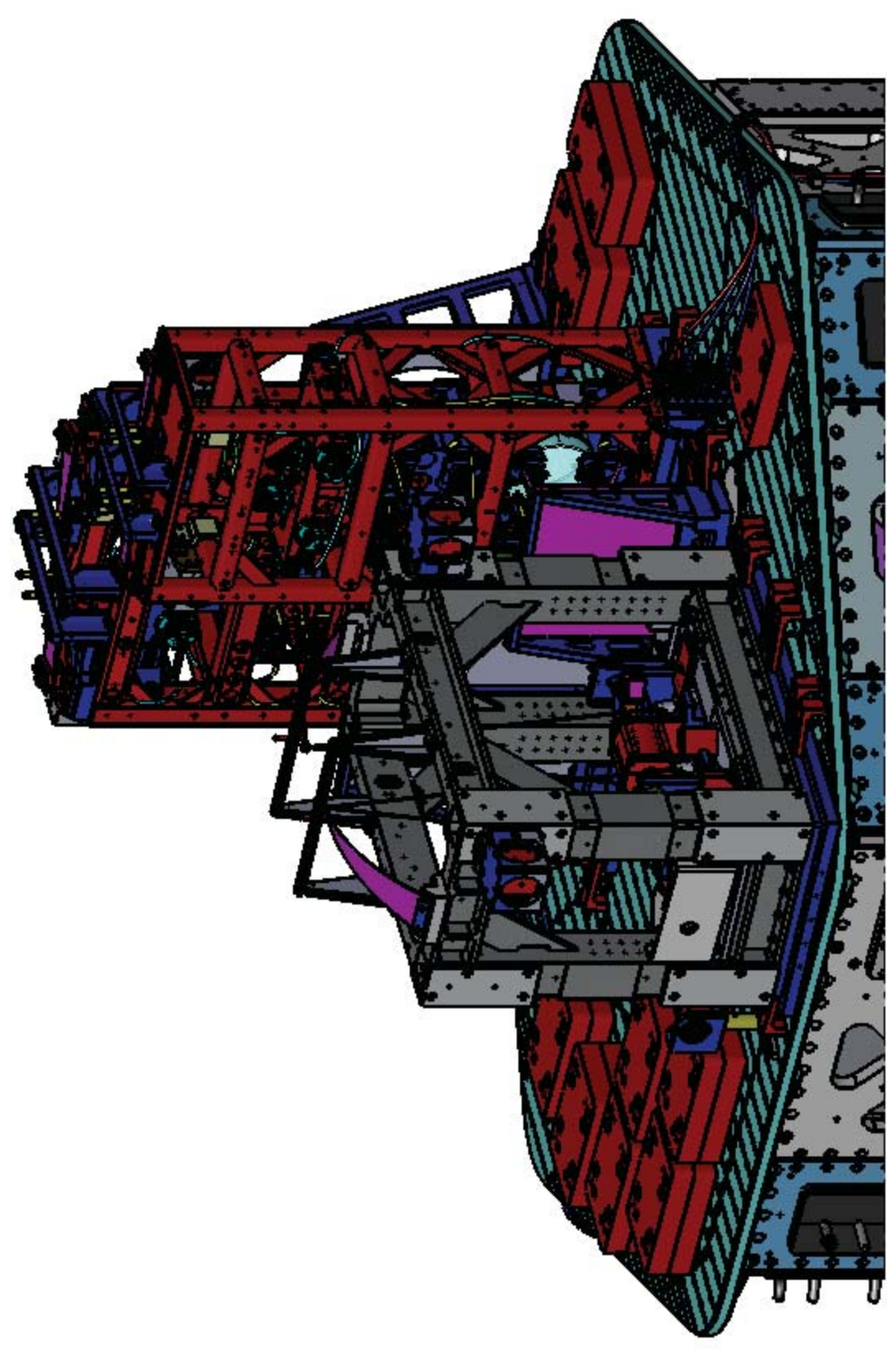
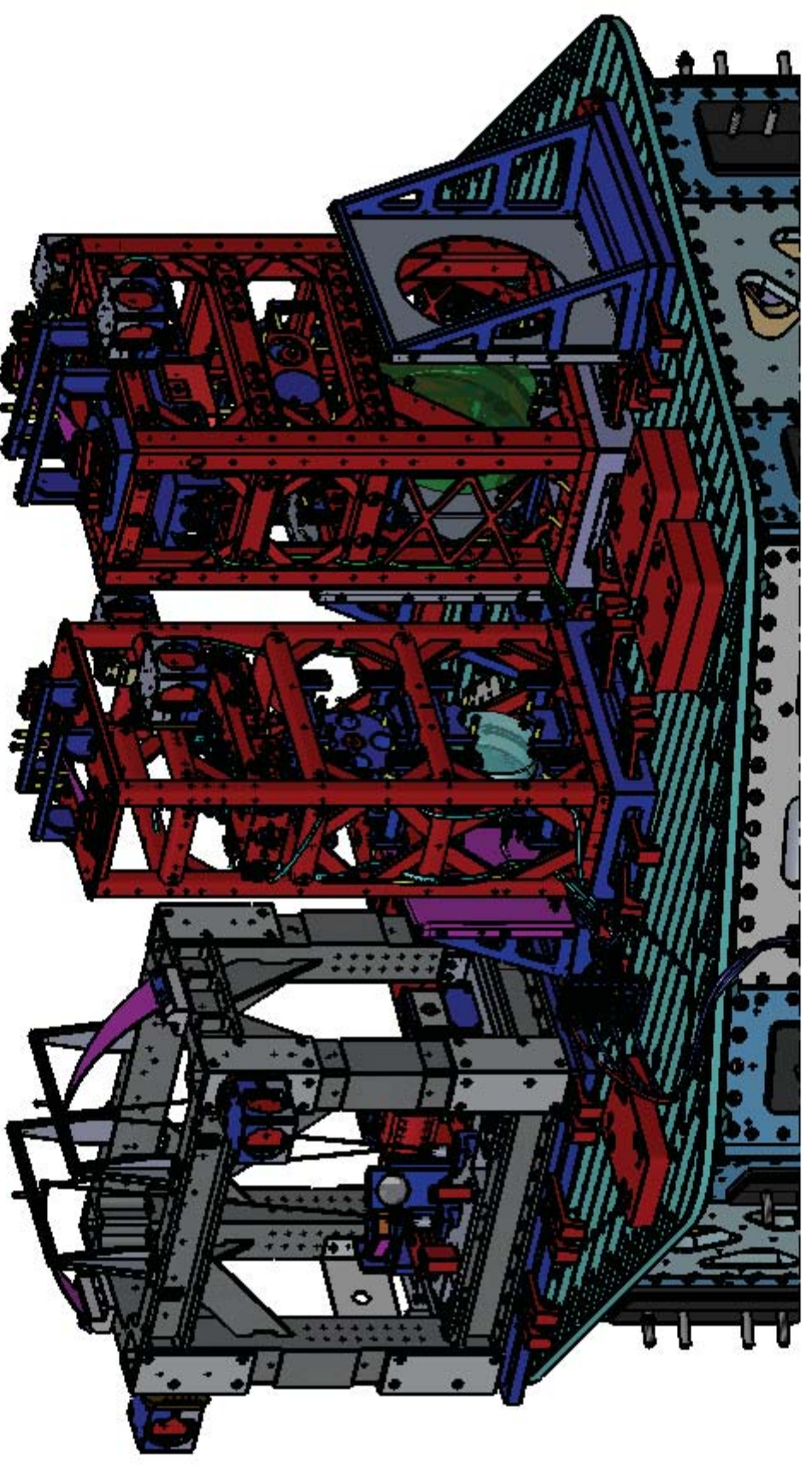
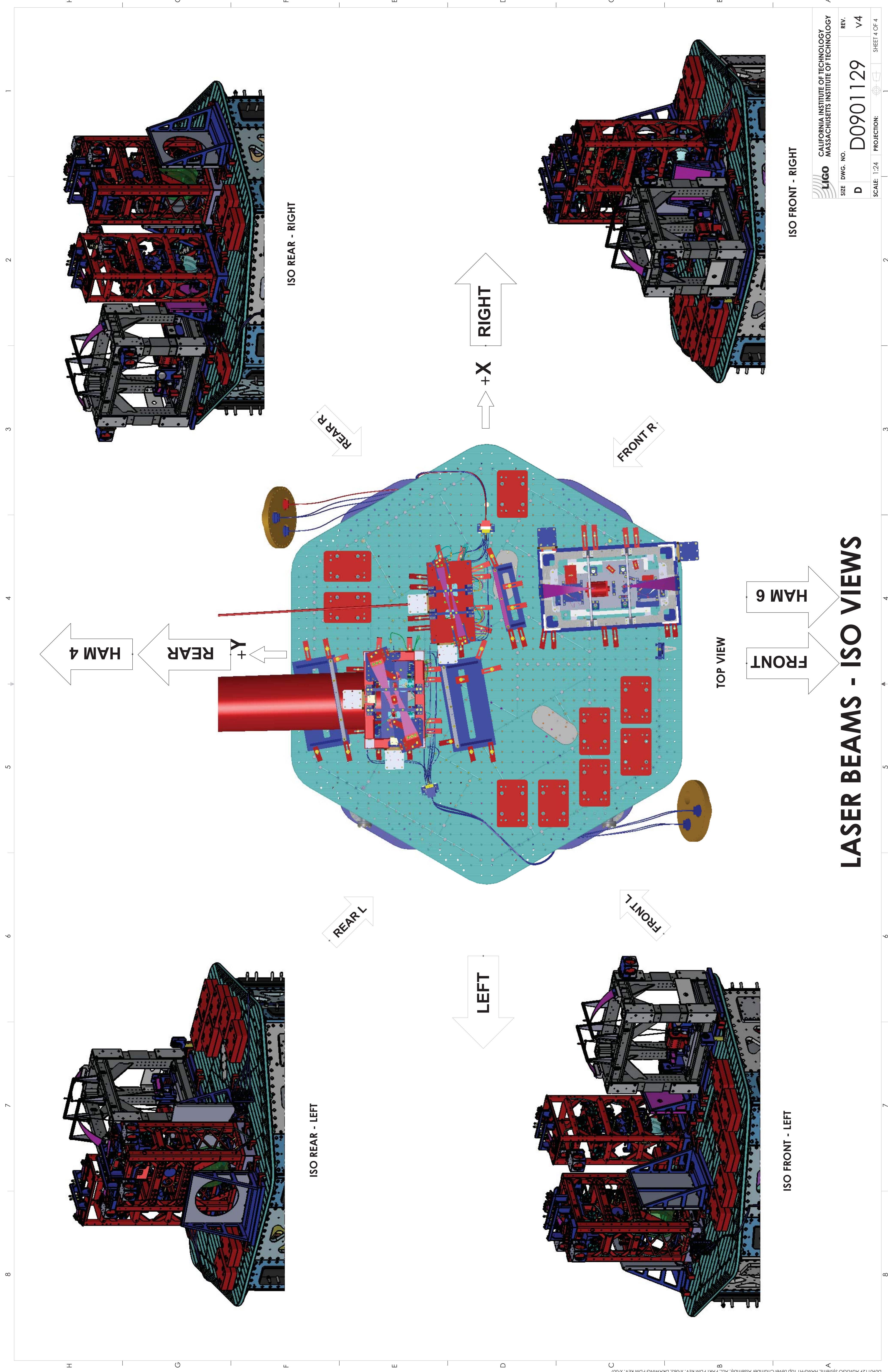
REAR VIEW
(ROTATED 180 DEGREES CCW)

LEFT SIDE VIEW
(ROTATED 90 DEGREES CCW)

LASER BEAMS - ORTHO VIEWS

CALIFORNIA INSTITUTE OF TECHNOLOGY MASSACHUSETTS INSTITUTE OF TECHNOLOGY	
SIZE	DWG. NO.
D	D0901129
SCALE: 1:24	PROJECTION:
REV.	SHEET 3 OF 4
V4	

D0901129 Adv/LIGO Systems, HAM5-H1 Top Level Chamber Assembly, ALL PART PDM REV: X-063, DRAWING PDM REV: X-007



LIGO		CALIFORNIA INSTITUTE OF TECHNOLOGY MASSACHUSETTS INSTITUTE OF TECHNOLOGY	
SIZE	DWG. NO.	REV.	
D	D0901129	V4	
SCALE:	1:24	PROJECTION:	SHEET 4 OF 4

LASER BEAMS - ISO VIEWS