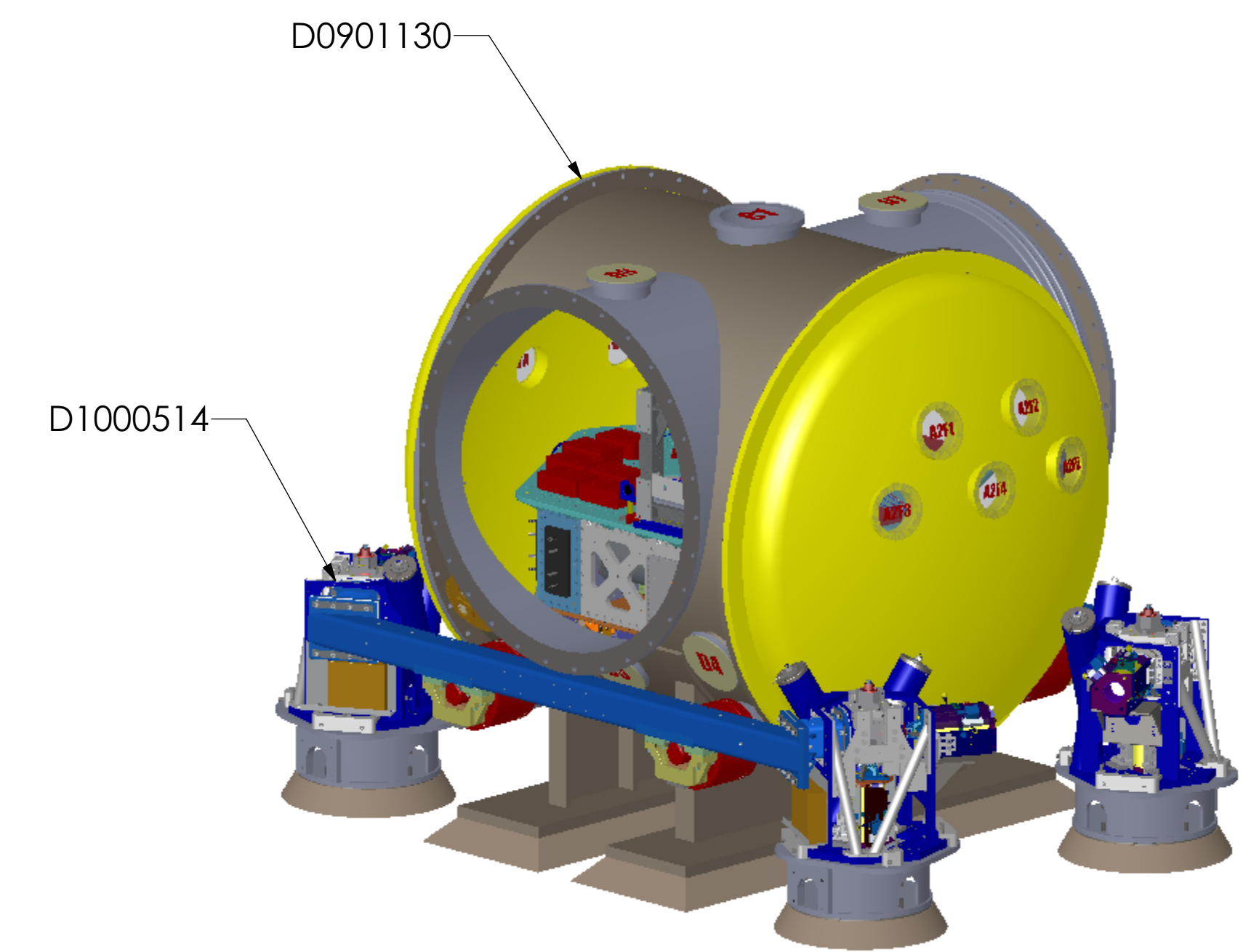
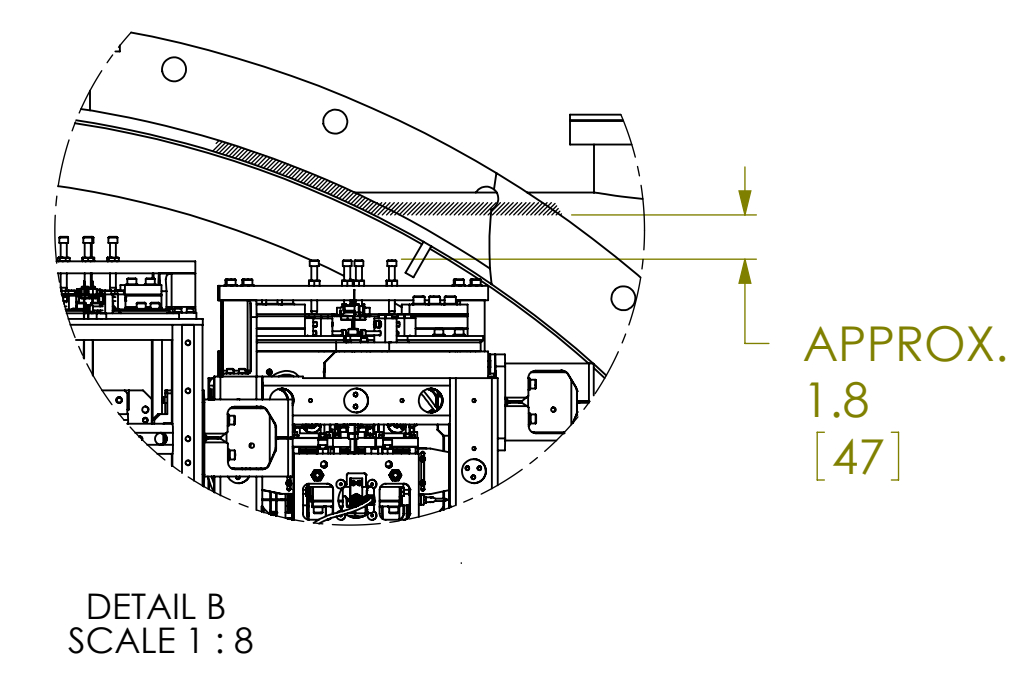
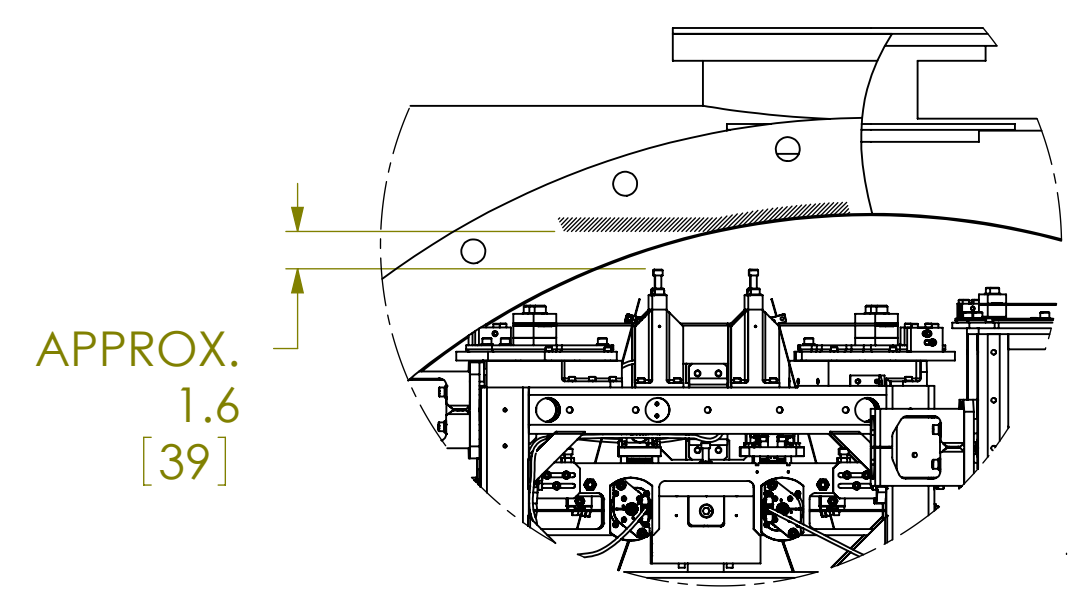
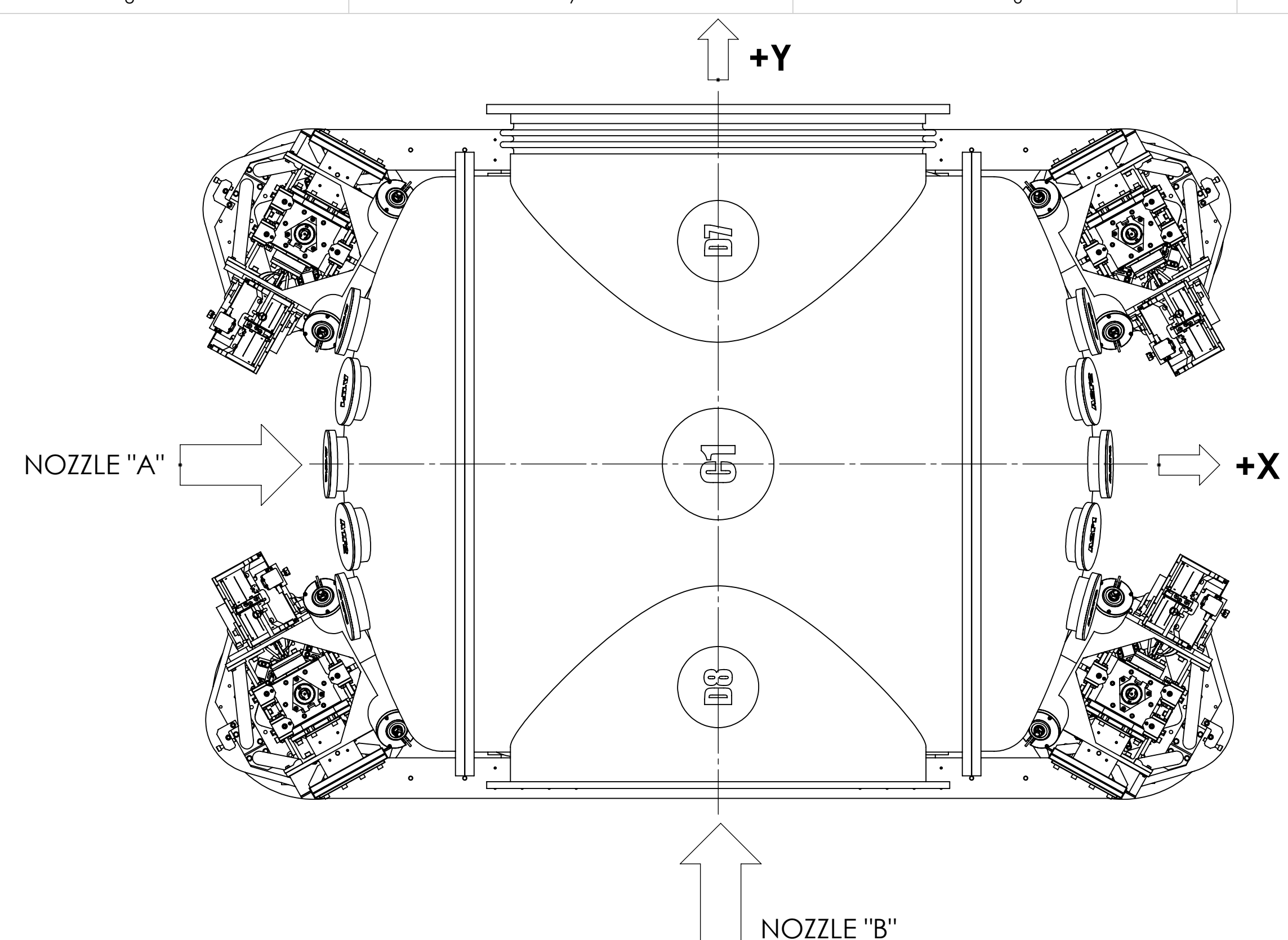
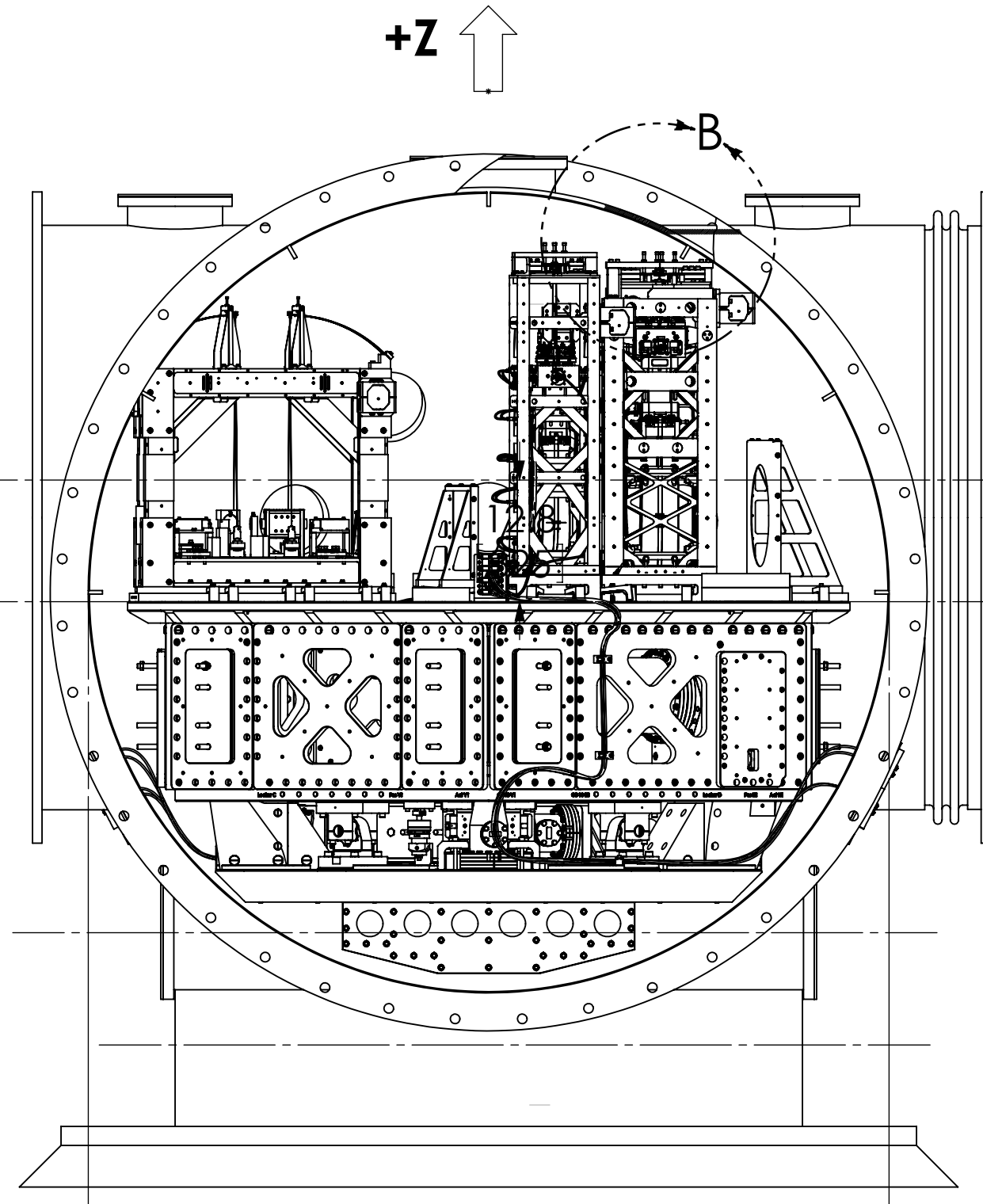
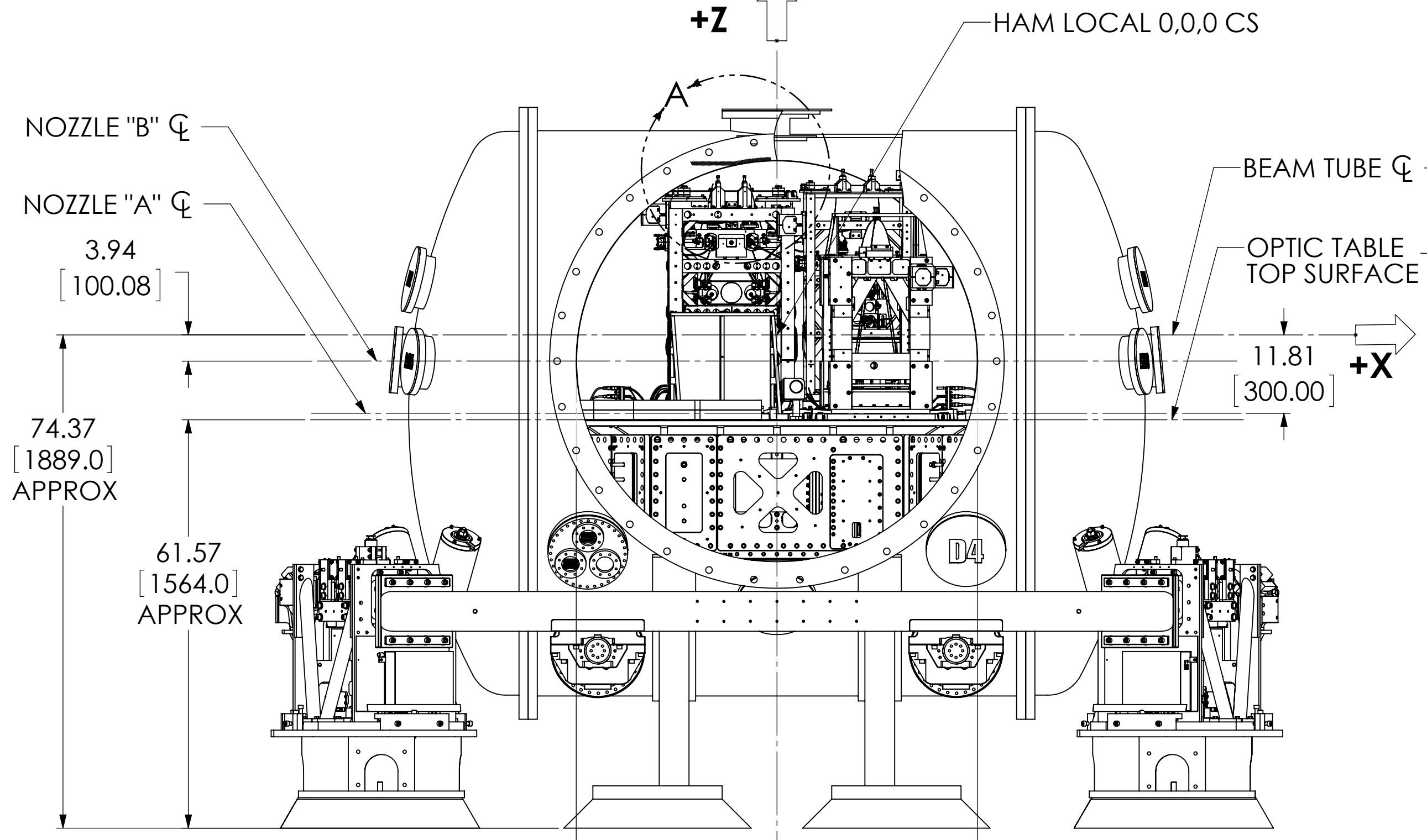


REV.	DATE	DCH #	DRAWING TREE #
v3	28 MAY 2011		
v2	20 OCT 2009		
v4	27 MAR 2013		

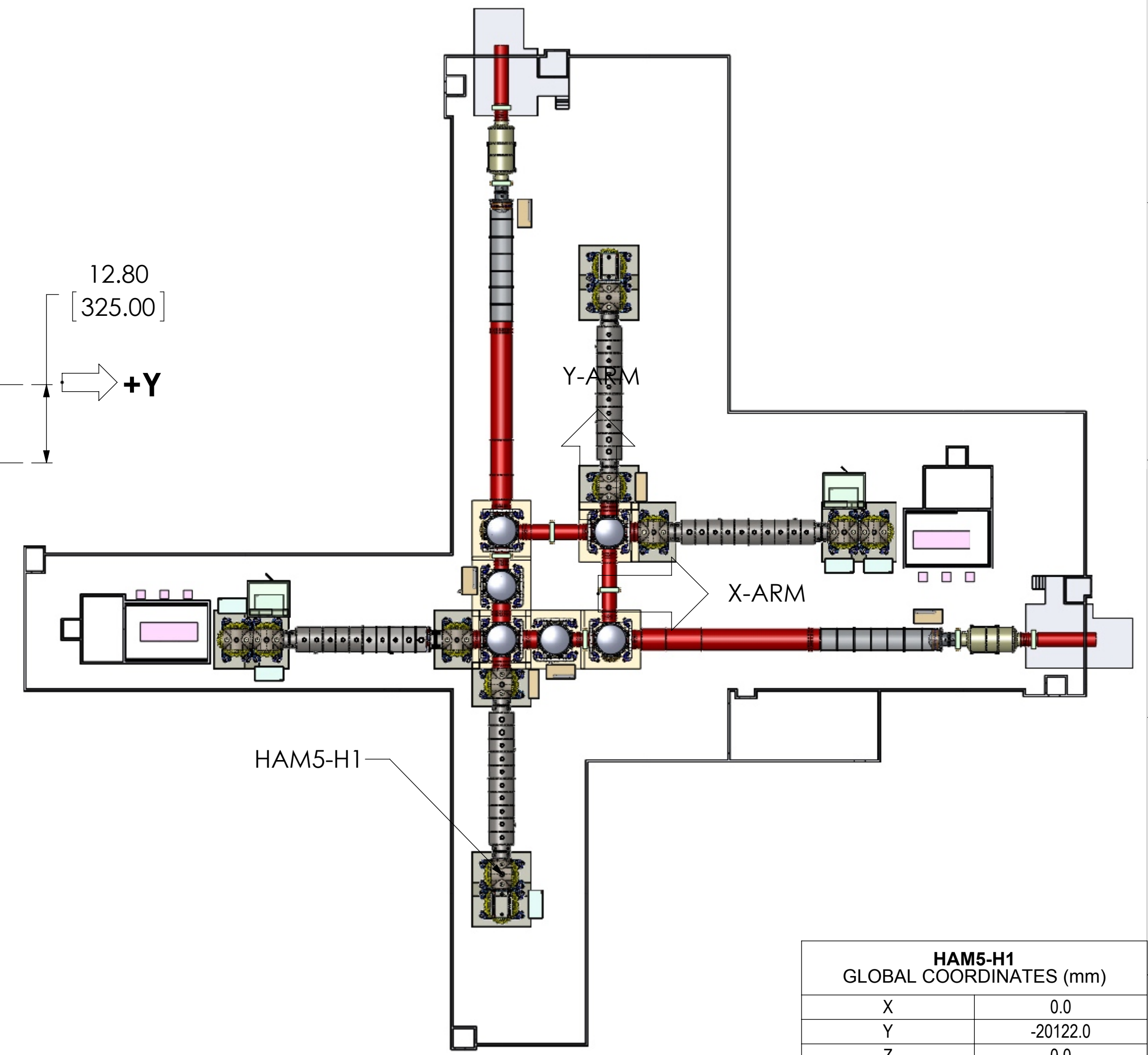


TOP VIEW

↑ +Z



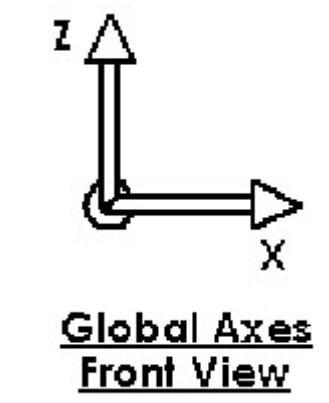
RIGHT VIEW



SMALL ACCESS DOOR \varnothing 60.50 [1536.70]

LARGE ACCESS DOOR \varnothing 84.25 [2139.95]

HAM5-H1 GLOBAL COORDINATES (mm)	
X	0.0
Y	-20122.0
Z	0.0



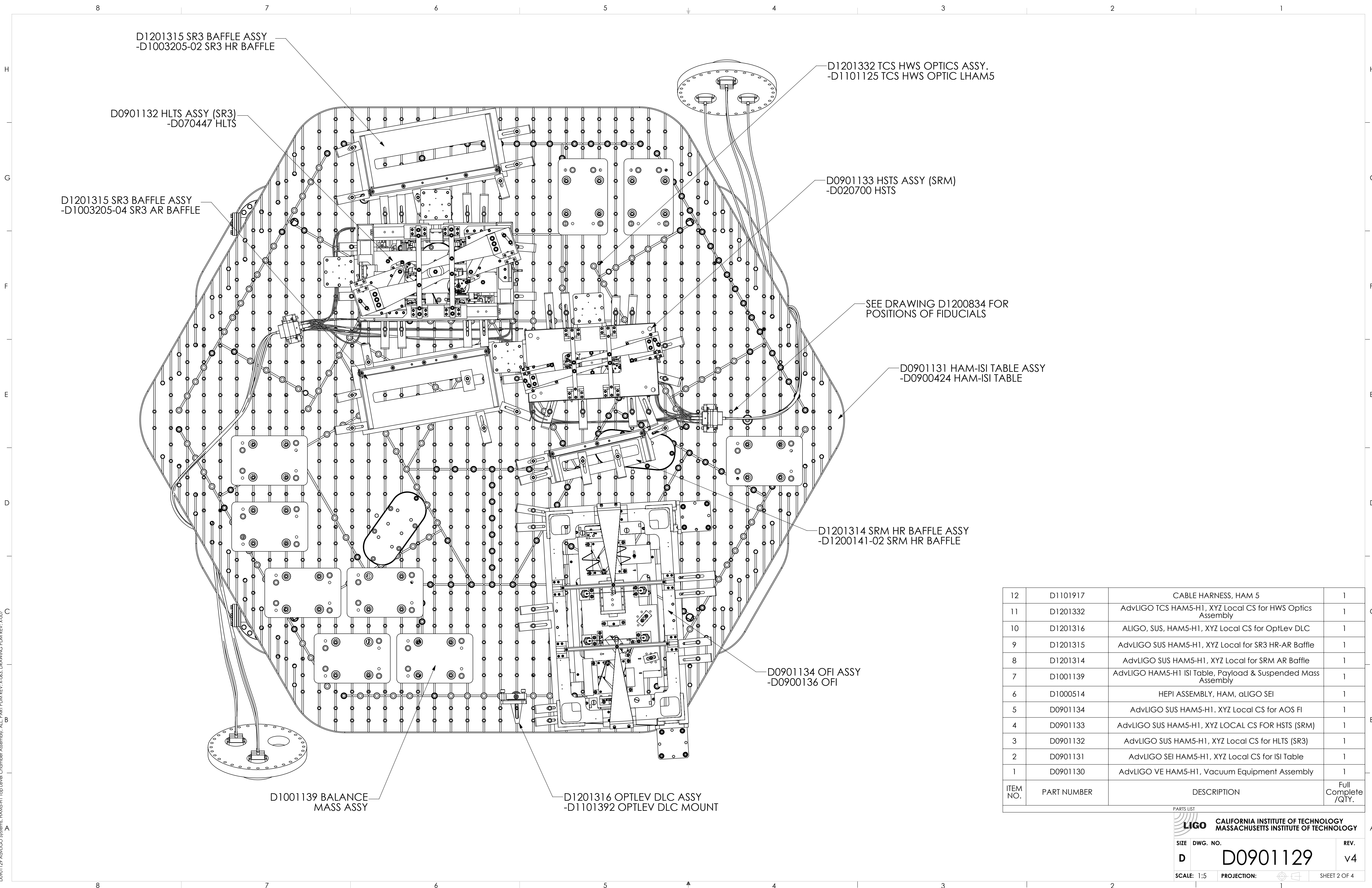
NOTES AND TOLERANCES: (UNLESS OTHERWISE SPECIFIED)

MATERIAL	--	FINISH	-- μ inch
----------	----	--------	---------------

CALIFORNIA INSTITUTE OF TECHNOLOGY MASSACHUSETTS INSTITUTE OF TECHNOLOGY	
SYSTEM	ADVANCED LIGO
SUB-SYSTEM	SUS
NEXT ASSY	

PART NAME		ALIGO SYSTEMS, HAM5-H1 TOP LEVEL CHAMBER ASSY	
DESIGNER	ED CHAVEZ	10 NOV 2009	
DRAFTER	C. TORRIE	15 NOV 2011	
CHECKER	SEE DCC	SEE DCC	
APPROVAL	SEE DCC	SEE DCC	
SIZE	D	DWG. NO.	D0901129
REV.	v4	SCALE:	1:16
PROJECTION:			
SHEET 1 OF 4			

D0901129 Asst LIGO Systems, HAM5-H1 Top Level Chamber Assembly, ALL PART PDM REV: X-003, DRAWING PDM REV: X-007



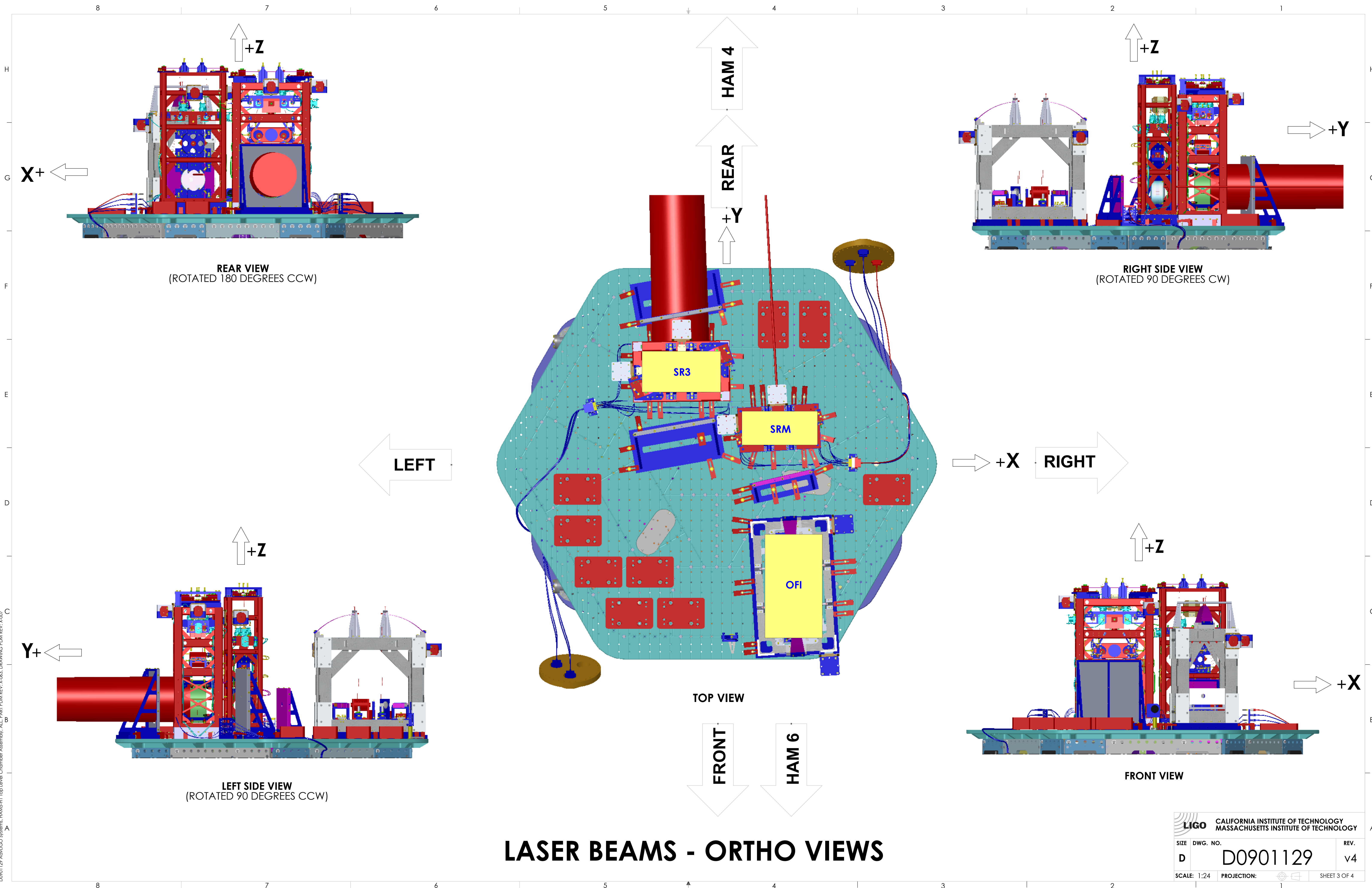
12	D1101917	CABLE HARNESS, HAM 5	1
11	D1201332	AdvLIGO TCS HAM5-H1, XYZ Local CS for HWS Optics Assembly	1
10	D1201316	ALIGO, SUS, HAM5-H1, XYZ Local CS for OptLev DLC	1
9	D1201315	AdvLIGO SUS HAM5-H1, XYZ Local for SR3 HR-AR Baffle	1
8	D1201314	AdvLIGO SUS HAM5-H1, XYZ Local for SRM AR Baffle	1
7	D1001139	AdvLIGO HAM5-H1 ISI Table, Payload & Suspended Mass Assembly	1
6	D1000514	HEPI ASSEMBLY, HAM, aLIGO SEI	1
5	D0901134	AdvLIGO SUS HAM5-H1, XYZ Local CS for AOS FI	1
4	D0901133	AdvLIGO SUS HAM5-H1, XYZ LOCAL CS FOR HSTS (SRM)	1
3	D0901132	AdvLIGO SUS HAM5-H1, XYZ Local CS for HLTS (SR3)	1
2	D0901131	AdvLIGO SEI HAM5-H1, XYZ Local CS for ISI Table	1
1	D0901130	AdvLIGO VE HAM5-H1, Vacuum Equipment Assembly	1
ITEM NO.	PART NUMBER	DESCRIPTION	Full Complete /QTY.


CALIFORNIA INSTITUTE OF TECHNOLOGY
MASSACHUSETTS INSTITUTE OF TECHNOLOGY

SIZE DWG. NO. REV.
D **D0901129** **v4**

SCALE: 1:5 PROJECTION: SHEET 2 OF 4

D0901129 AdvLIGO Systems, HAM5-H1 Top Level Chamber Assembly, ALL PART PDM REV. X-003, DRAWING PDM REV. X-007



REAR VIEW
(ROTATED 180 DEGREES CCW)

RIGHT SIDE VIEW
(ROTATED 90 DEGREES CW)

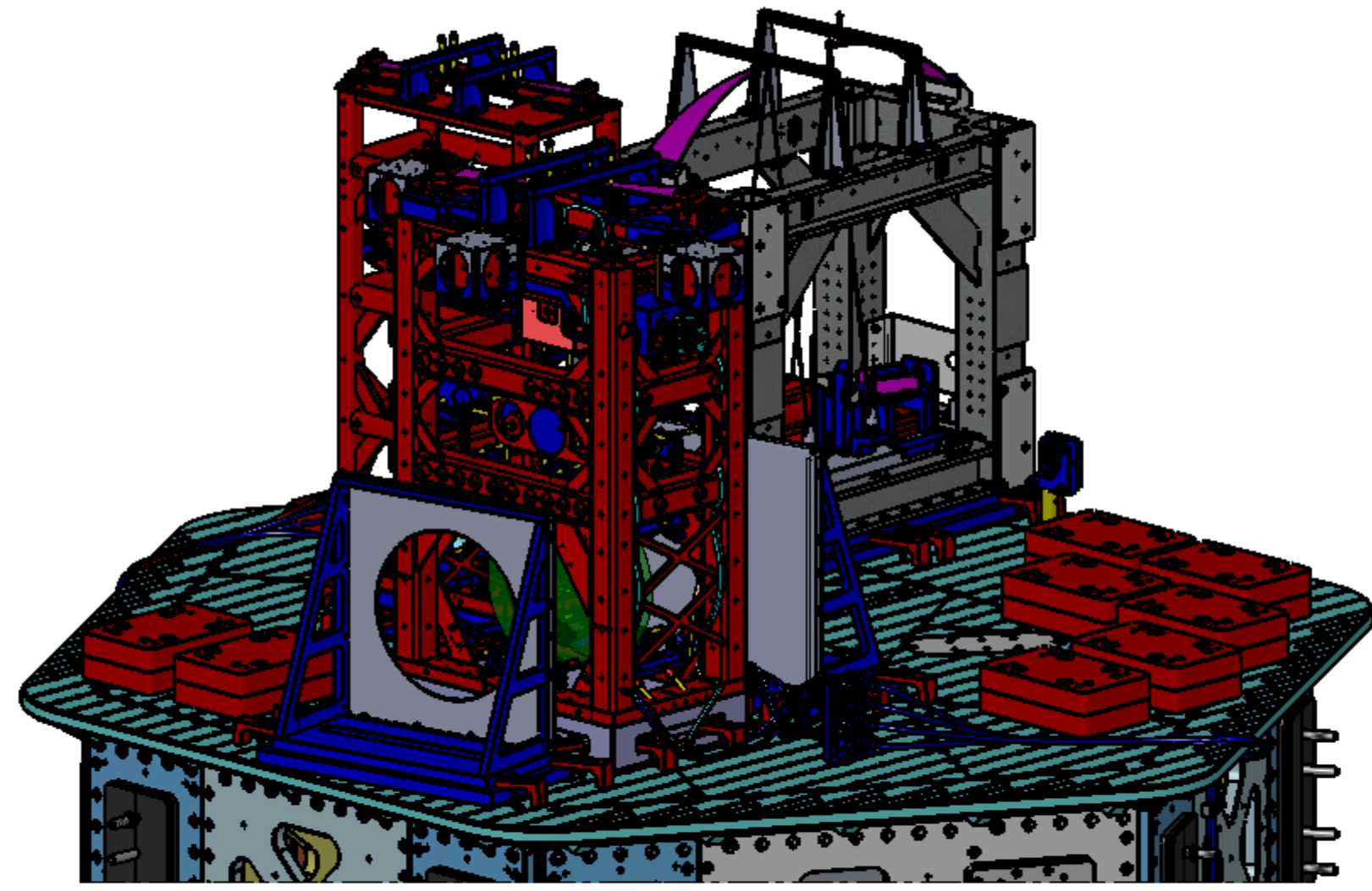
LEFT SIDE VIEW
(ROTATED 90 DEGREES CCW)

FRONT VIEW

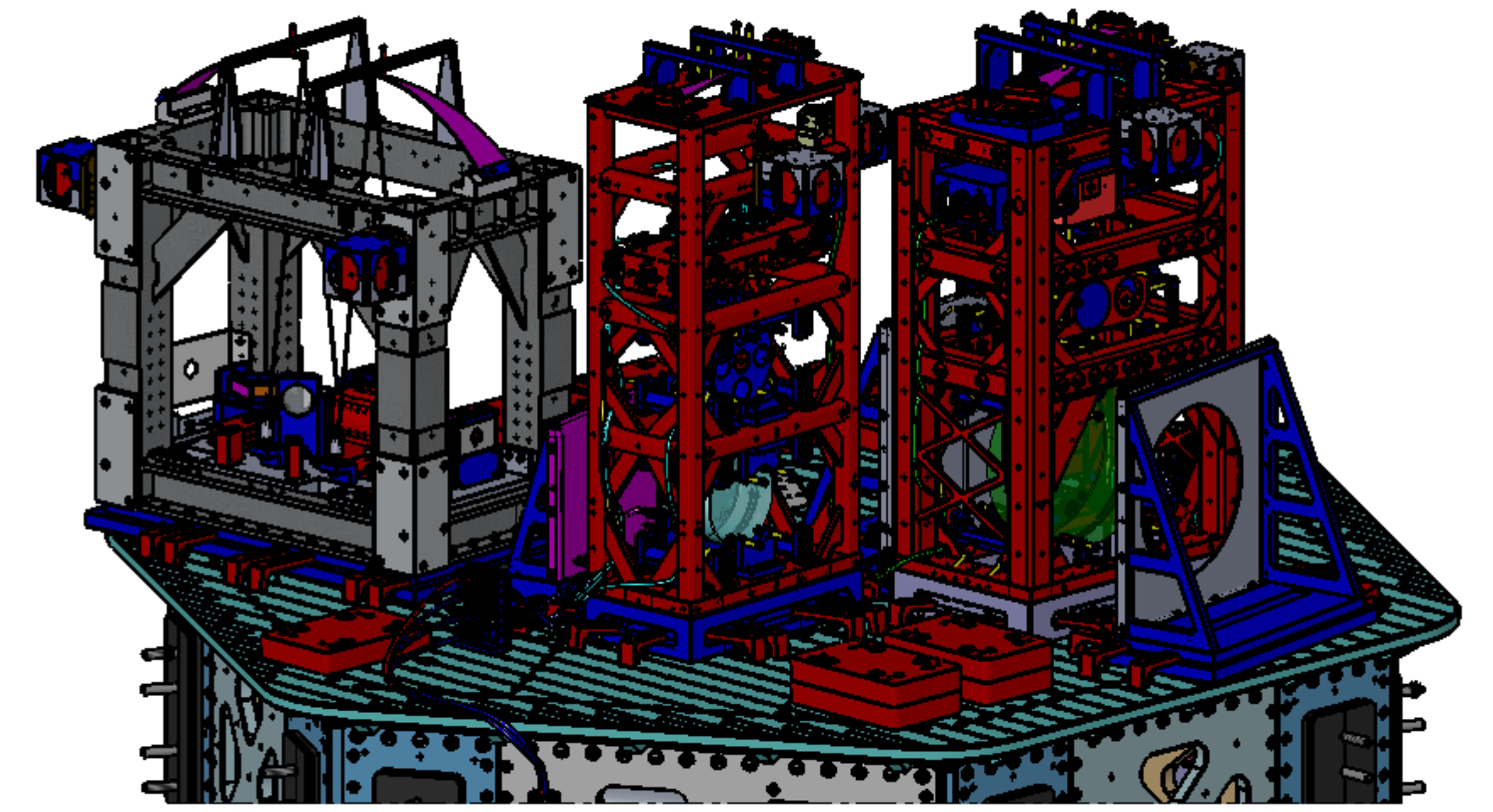
LASER BEAMS - ORTHO VIEWS

CALIFORNIA INSTITUTE OF TECHNOLOGY MASSACHUSETTS INSTITUTE OF TECHNOLOGY		REV.
SIZE	DWG. NO.	REV.
D	D0901129	v4
SCALE: 1:24	PROJECTION:	SHEET 3 OF 4

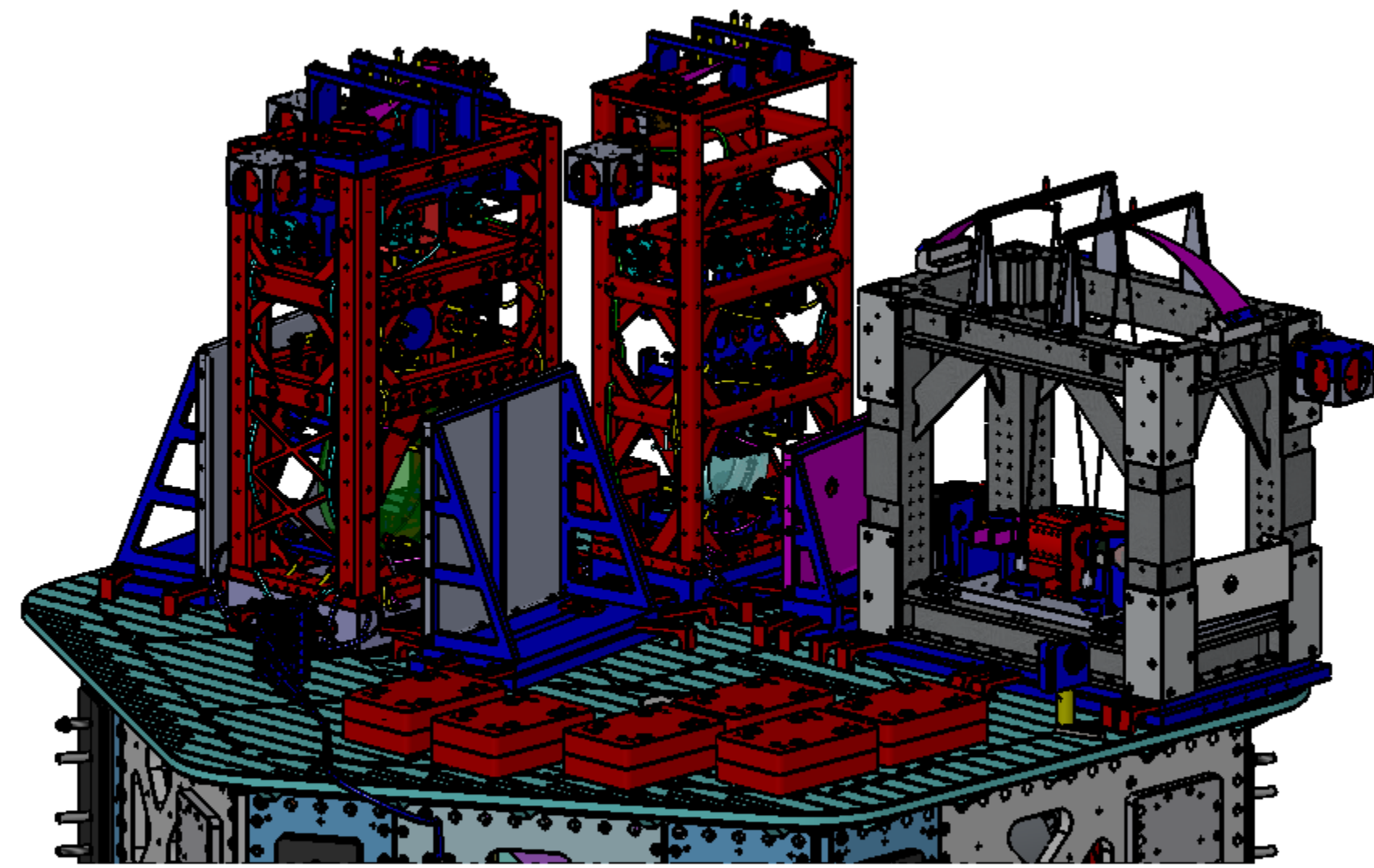
D0901129 Asst LIGO Systems: HAMSH1 Top Level Chamber Assembly, ALL PART PDM REV: X-003, DRAWING PDM REV: X-007



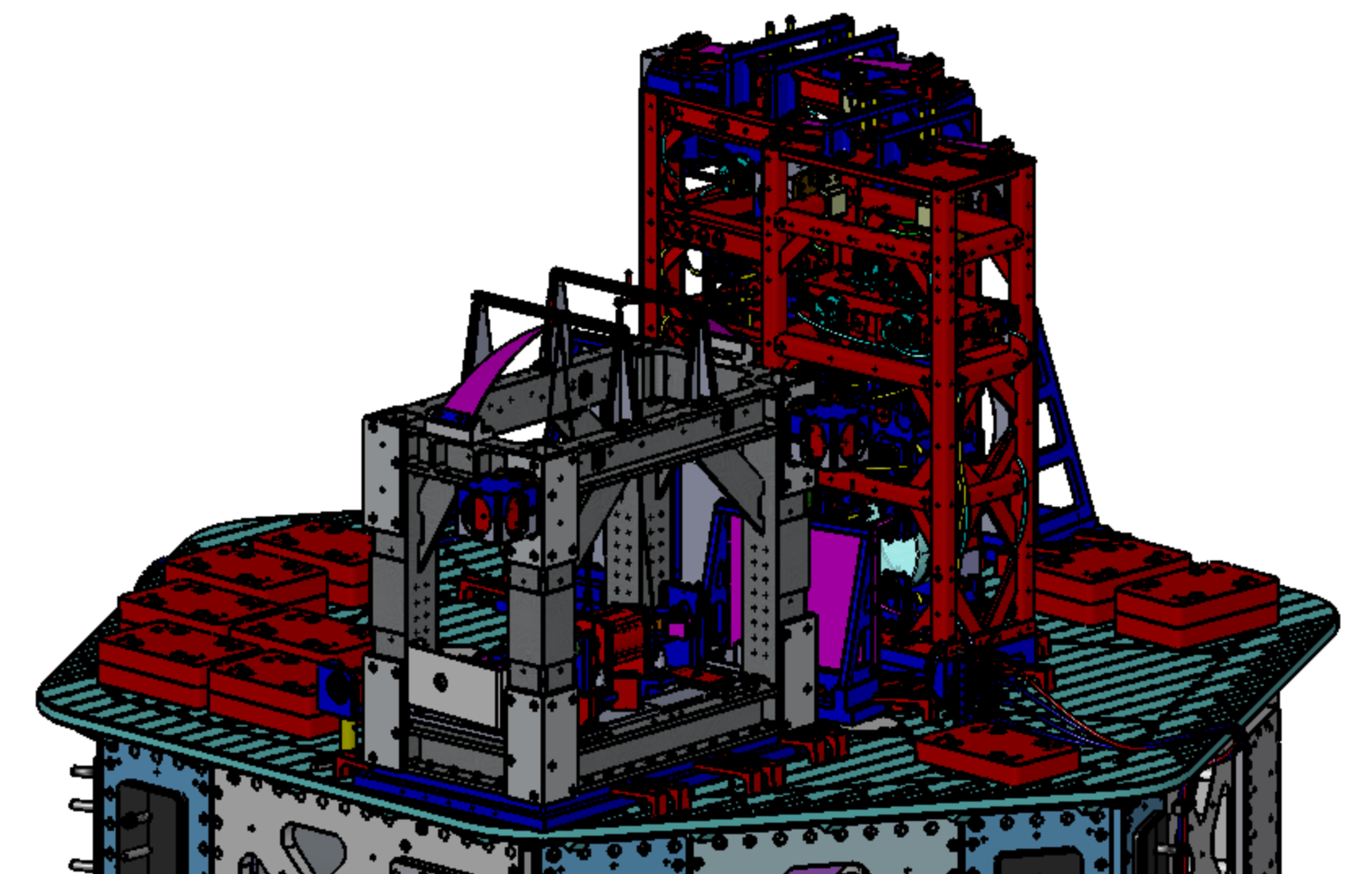
ISO REAR - LEFT



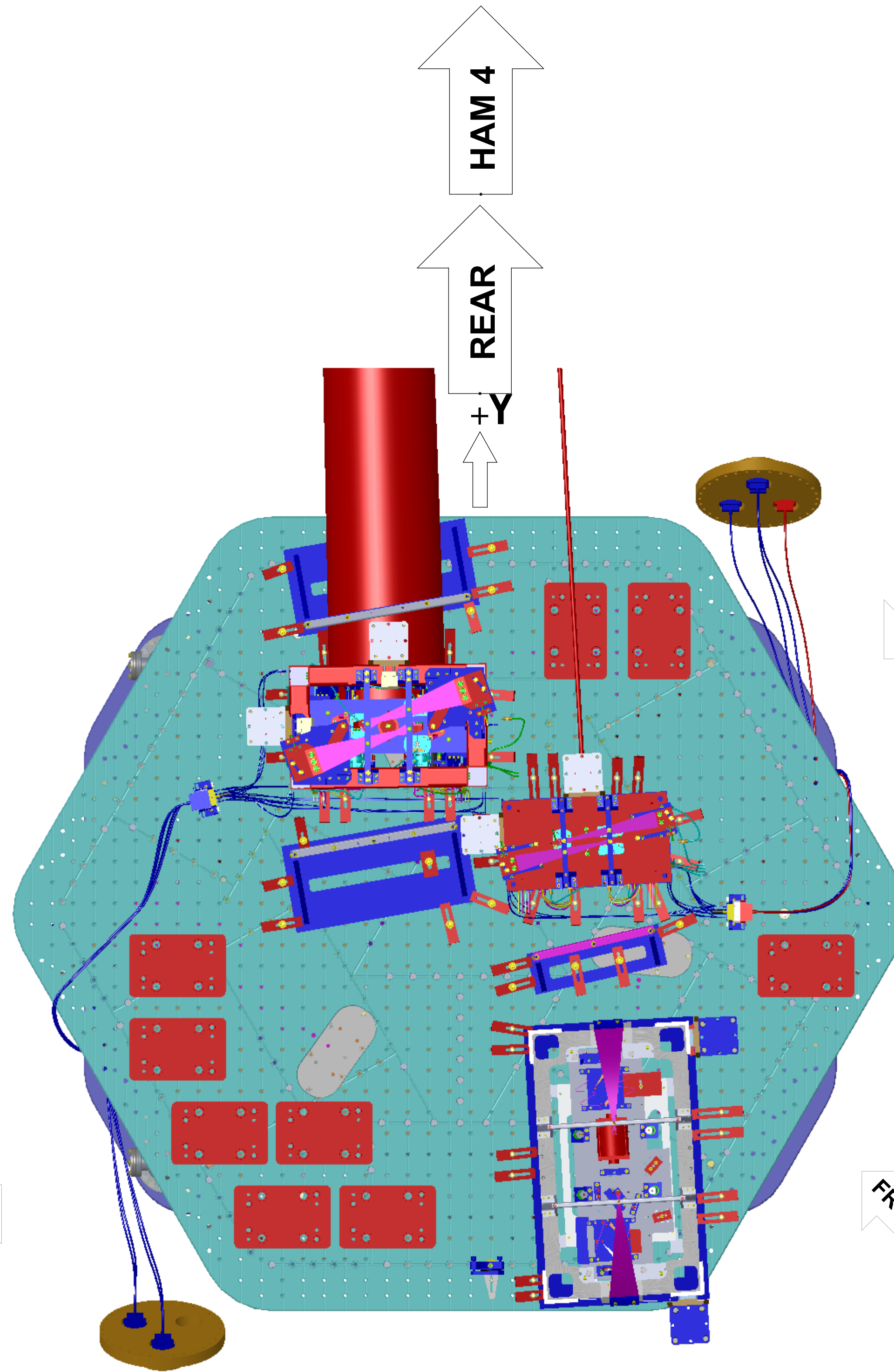
ISO REAR - RIGHT



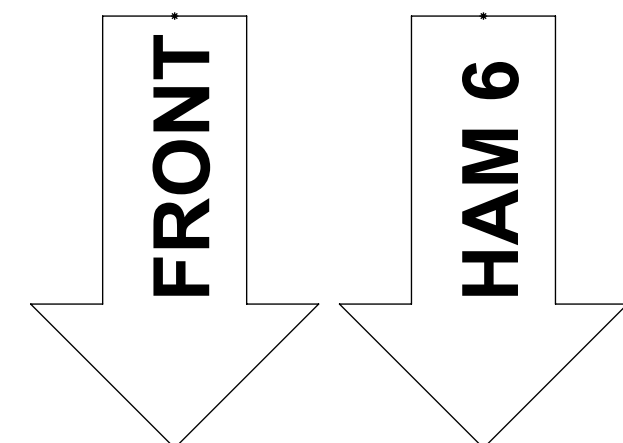
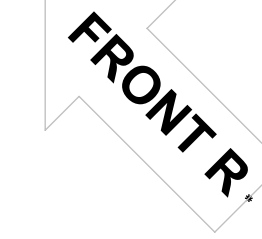
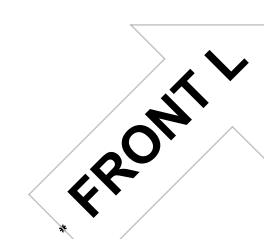
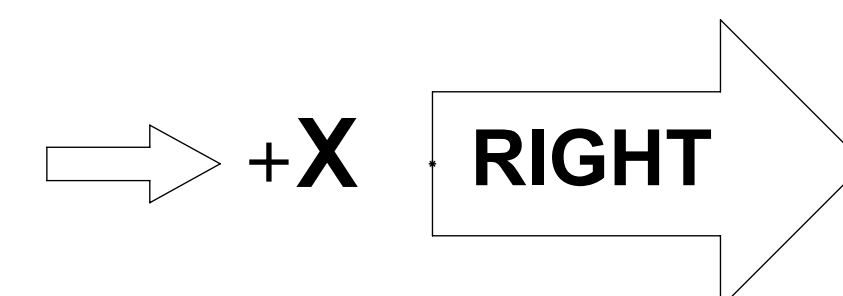
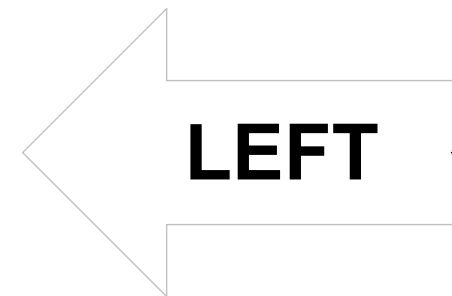
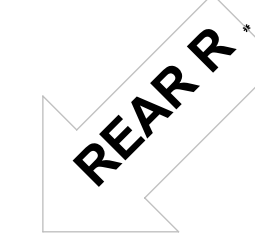
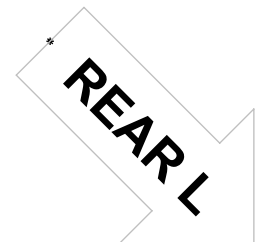
ISO FRONT - LEFT



ISO FRONT - RIGHT



TOP VIEW



LASER BEAMS - ISO VIEWS

CALIFORNIA INSTITUTE OF TECHNOLOGY MASSACHUSETTS INSTITUTE OF TECHNOLOGY		REV.
SIZE	DWG. NO.	REV.
D	D0901129	v4
SCALE: 1:24	PROJECTION:	SHEET 4 OF 4

D0901129 Asst LIGO Systems: HAMSH1 Top Level Chamber Assembly, ALL PART PDM REV: X-003, DRAWING PDM REV: X-007