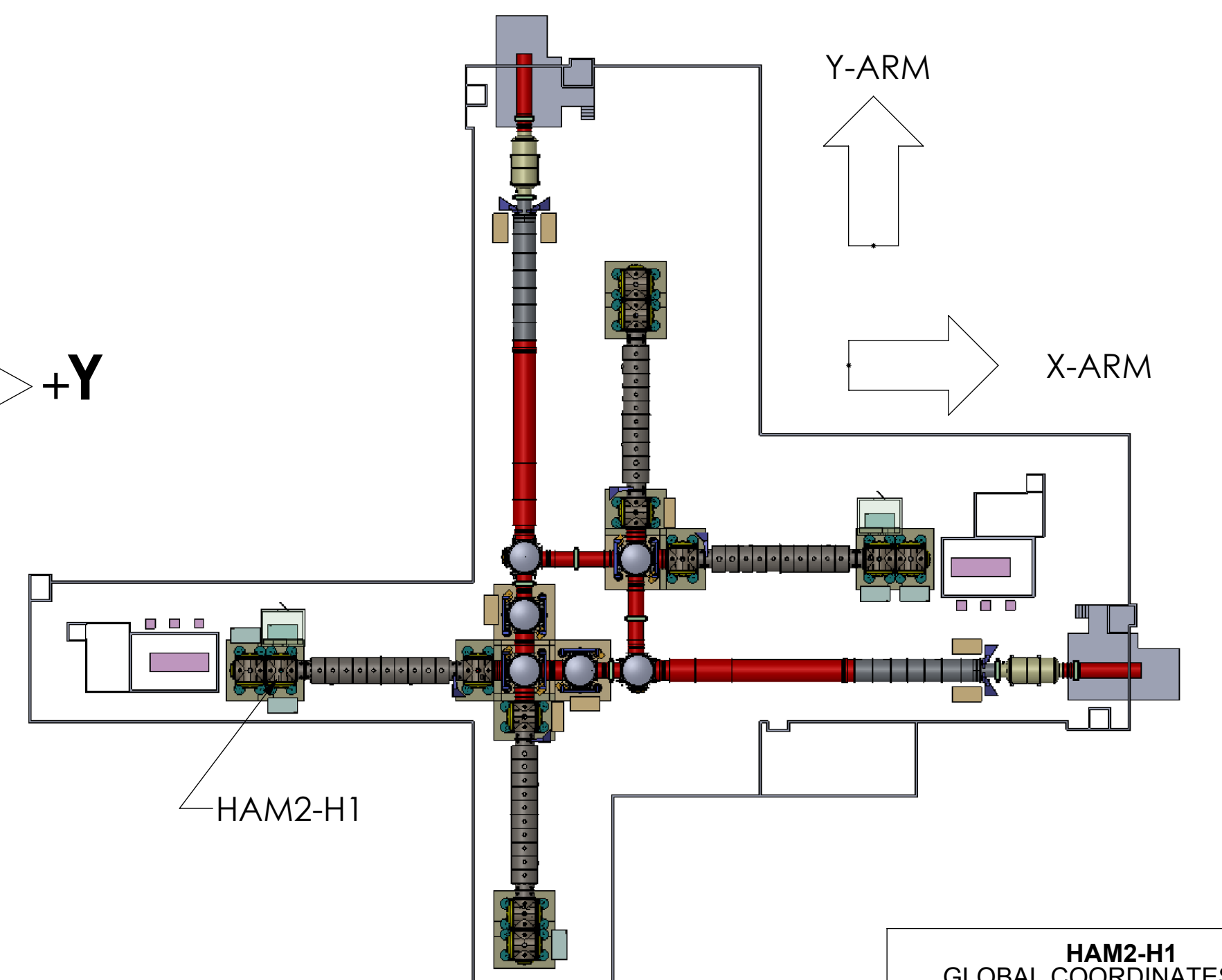
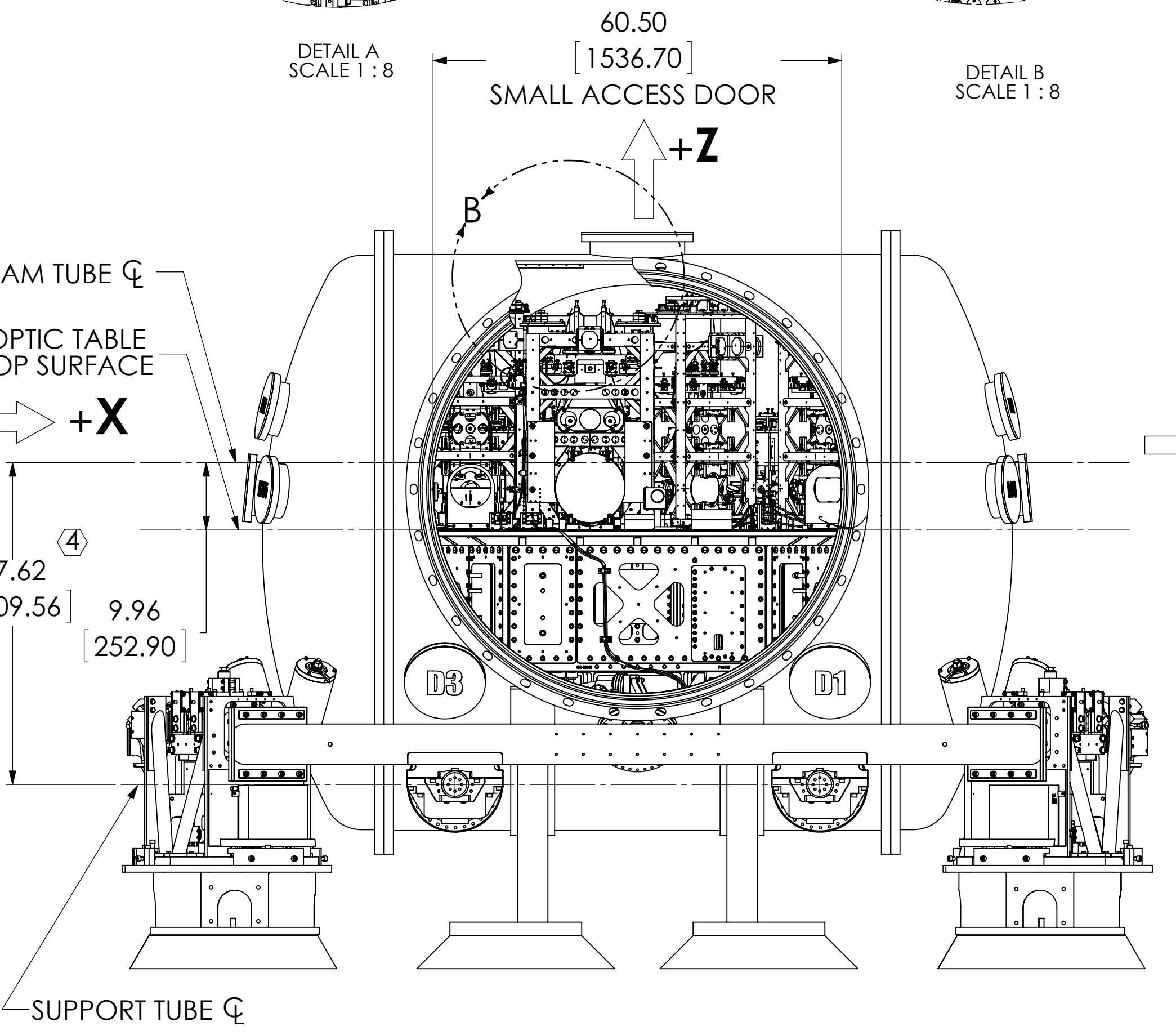
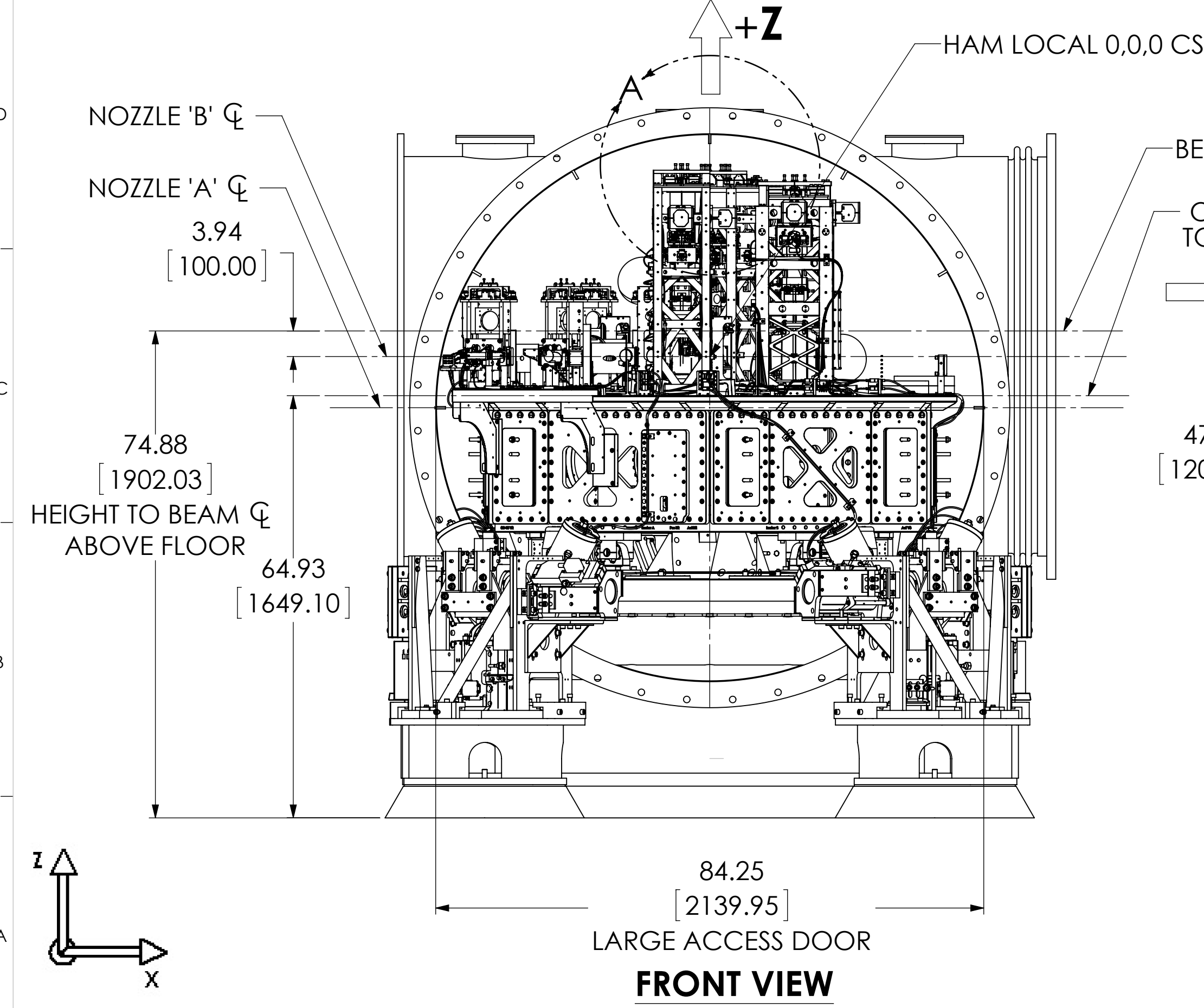
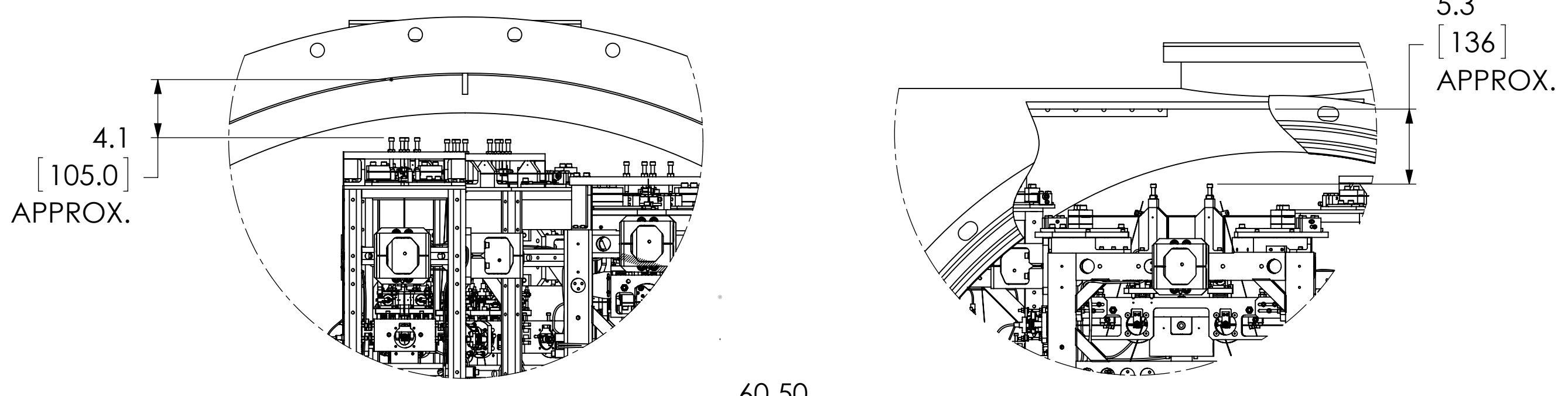
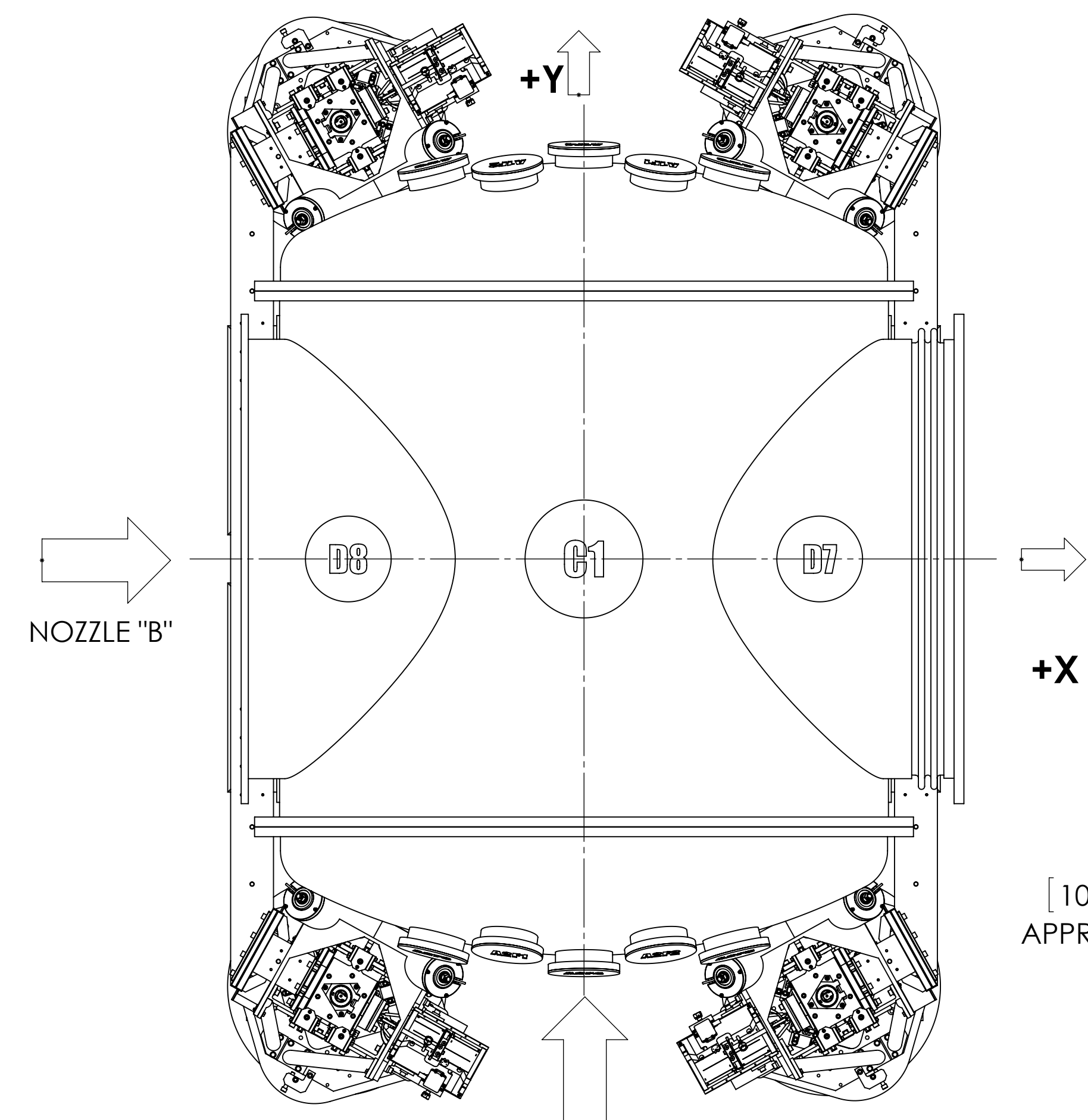
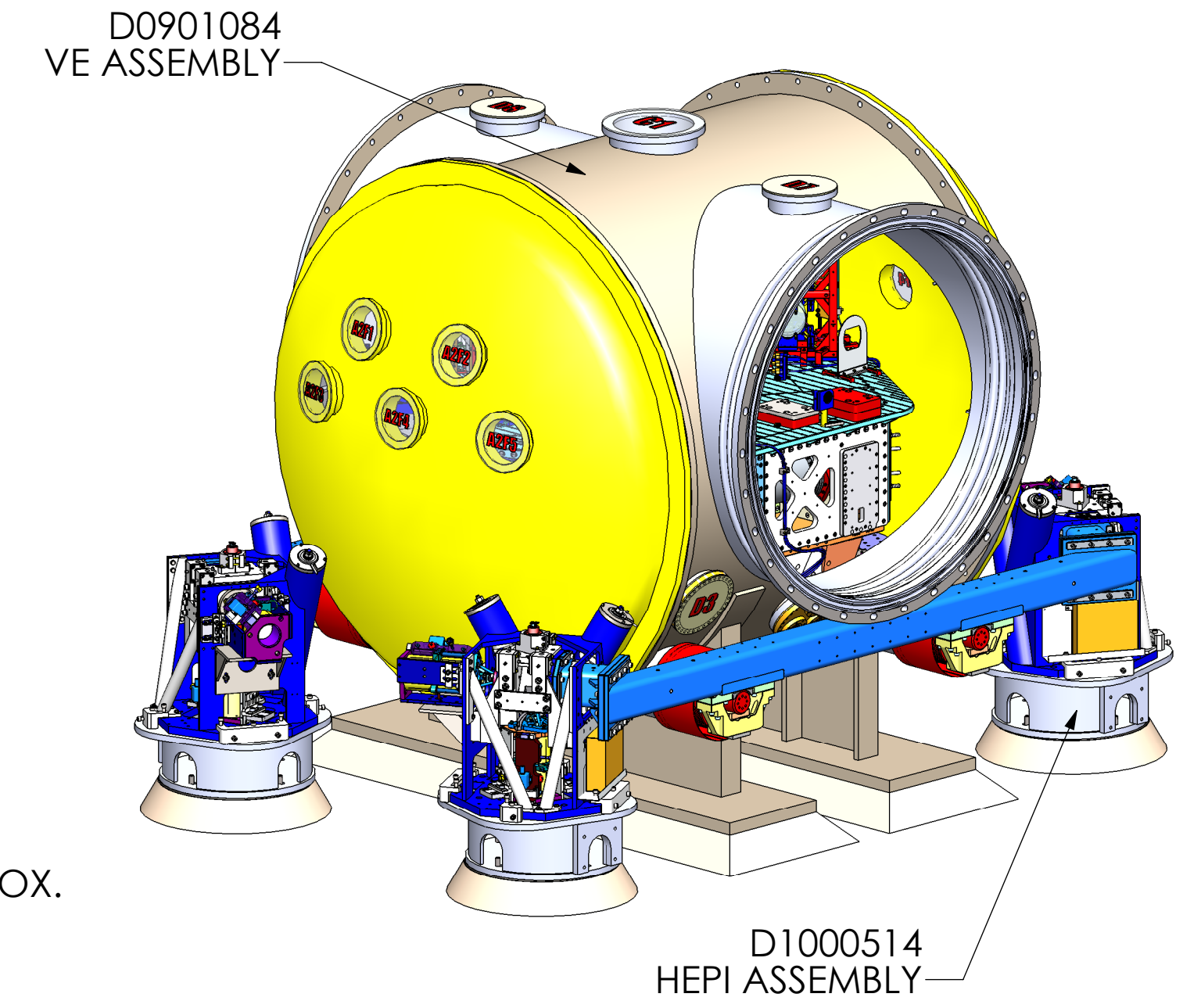


REV.	DATE	DCN #	DRAWING TREE #
v10	22 OCT 2013	E1300798-x0	-
v11	12 NOV 2013	-	-
v12	15 JUL 2014	E1400266-x0	-

1. REFER TO DOCUMENT D1101296 FOR OPTICAL TABLE HOLE TABULATION.
2. REFER TO G1000125 FOR ISI NAMING AND ORIENTATION CONVENTION..
3. REFER TO T1100292 FOR VIEWPORT DEFINITION.
- ④ DIMENSION WRT LOCAL BUILDING CS. REFER TO E1200625 FOR LOCAL COORDINATES OF SUPPORT TUBE ENDS.



HAM2-H1 GLOBAL COORDINATES (mm)	
X	-20122.0
Y	0.0
Z	0.0

NOTES AND TOLERANCES: (UNLESS OTHERWISE SPECIFIED)

LIGO CALIFORNIA INSTITUTE OF TECHNOLOGY
MASSACHUSETTS INSTITUTE OF TECHNOLOGY

SYSTEM: ADVANCED LIGO SUB-SYSTEM: SUS

MATERIAL: -- FINISH: -- μinch

NEXT ASSY: D0901469

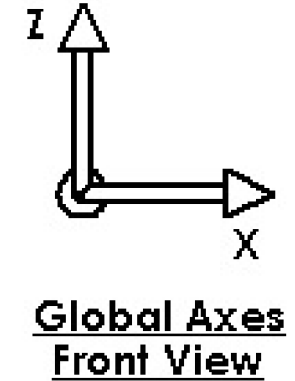
PART NAME: HAM2-H1 Top Level Chamber Assembly, Fully Defined

DESIGNER: ED CHAVEZ
DRAFTER: ED CHAVEZ 27 JUL 2009
CHECKER: C. TORRIE 27 JUL 2011
APPROVAL: SEE DCC

SIZE: D DWG. NO.: D0901083 REV.: v12

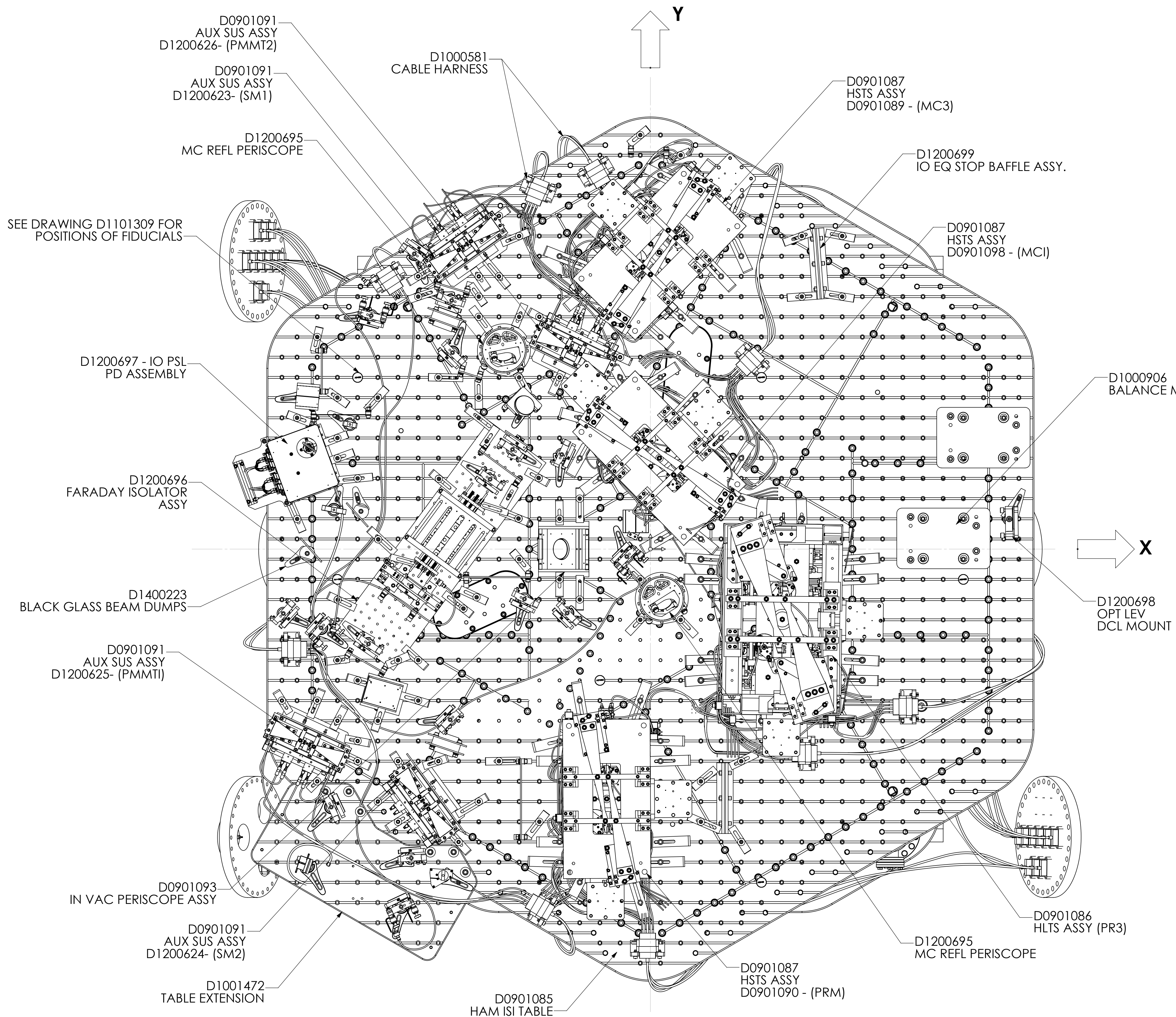
SCALE: 1:16 PROJECTION: SHEET 1 OF 6

D0901083 Adv LIGO Systems: HAM2-H1 Top Level Chamber Assembly, ALL PART PDM REV: X:132, DRAWING PDM REV: X:013



8 7 6 5 4 3 2 1

H G F E D C B A



ITEM NO.	PART NUMBER	DESCRIPTION	QTY.
18	D1400223	AdvLIGO, SUS, HAM2-H1, XYZ Local Cs for Black Glass Beam Dumps	1
17	D1101309	aLIGO, FIDUCIAL KIT, 1/4-20, HAM2 / HAM3	1
16	D1000581	CABLE HARNESS ROUTING, HAM 2	1
15	D1200699	AdvLIGO IO, HAM2-H1 Table, IO EQ Stop Baffle Assembly	1
14	D1200698	AdvLIGO SUS HAM2-H1, XYZ Local CS for Optlev DLC	1
13	D1200697	AdvLIGO IO HAM2-H1, XYZ Local CS for IO PSL PD Assembly	1
12	D1200696	AdvLIGO IO HAM2-H1, XYZ Local CS for Faraday Isolator	1
11	D1200695	AdvLIGO IO HAM2-H1, XYZ Local CS for MC Refl Periscope	1
10	D1200694	AdvLIGO SUS, HAM2-H1 Table, IO Straight Baffle Assembly	1
9	D1000906	AdvLIGO HAM2-H2 ISI Table, Payload & Suspended Mass Assembly	1
8	D1000514	HEPI ASSEMBLY, HAM, aLIGO SEI	1
7	D1200693	AdvLIGO SUS HAM2-H1, XYZ Local CS for Fixed Mount Optics	1
6	D0901093	AdvLIGO IO HAM2-H1, XYZ Local CS for In Vacuum Periscope	1
5	D0901091	AdvLIGO IO HAM2-H1, XYZ Local CS for SOS assy (SM1,SM2,PMMT1,PMMT2)	1
4	D0901087	AdvLIGO SUS HAM2-H1, XYZ Local CS for HSTS (MC1,MC3,PRM)	1
3	D0901086	AdvLIGO SUS HAM2-H1, XYZ Local CS for HLTS (PR3)	1
2	D0901085	AdvLIGO, SEI HAM2-H1, ISOLATION TABLE TOP LEVEL ASSY.	1
1	D0901084	AdvLIGO VE HAM2-H1, Vacuum Equipment Assembly	1

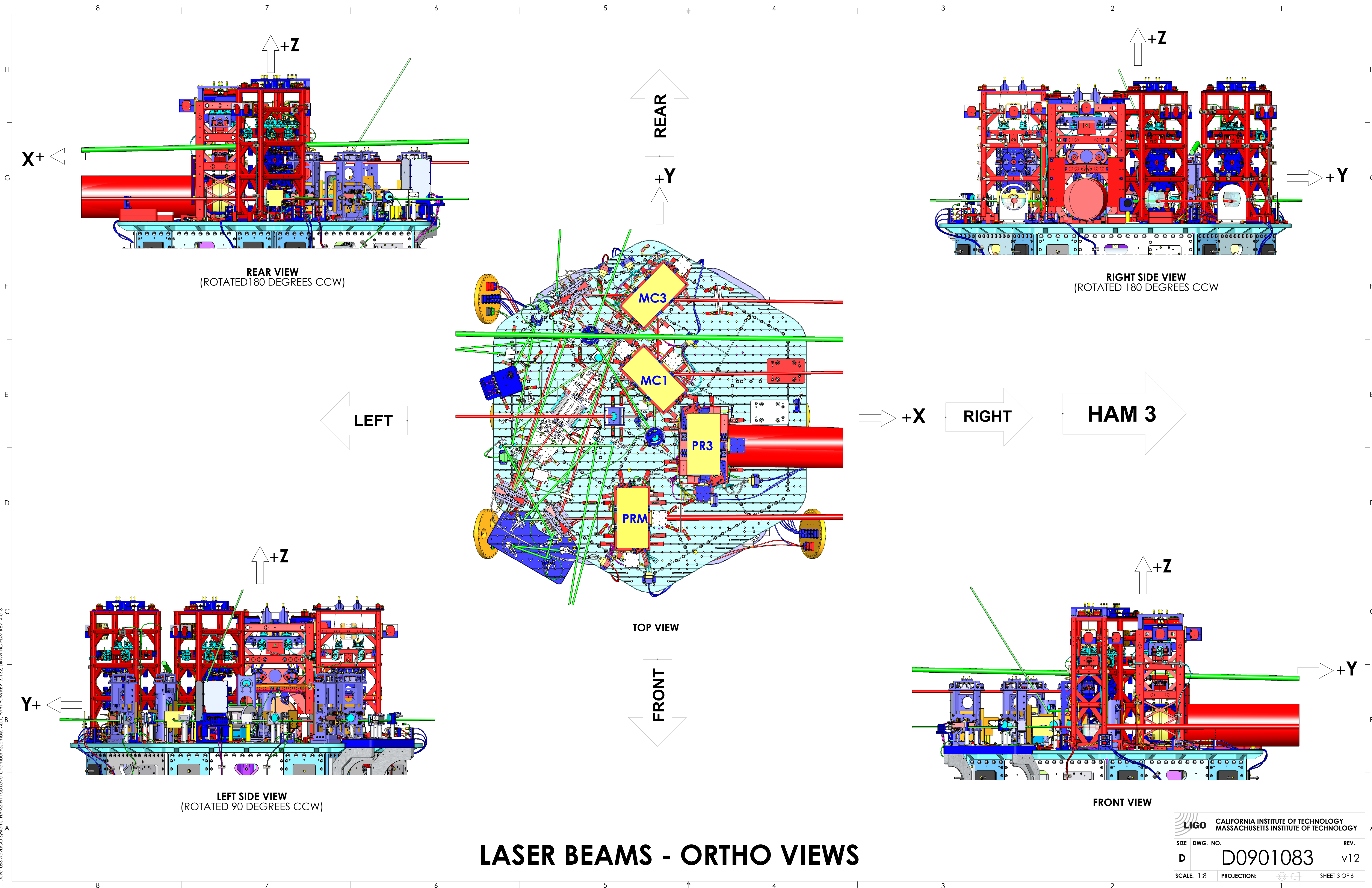
LIGO CALIFORNIA INSTITUTE OF TECHNOLOGY MASSACHUSETTS INSTITUTE OF TECHNOLOGY

SIZE DWG. NO. **D0901083** REV. **v12**

SCALE: 1:5 PROJECTION: SHEET 2 OF 6

8 7 6 5 4 3 2 1

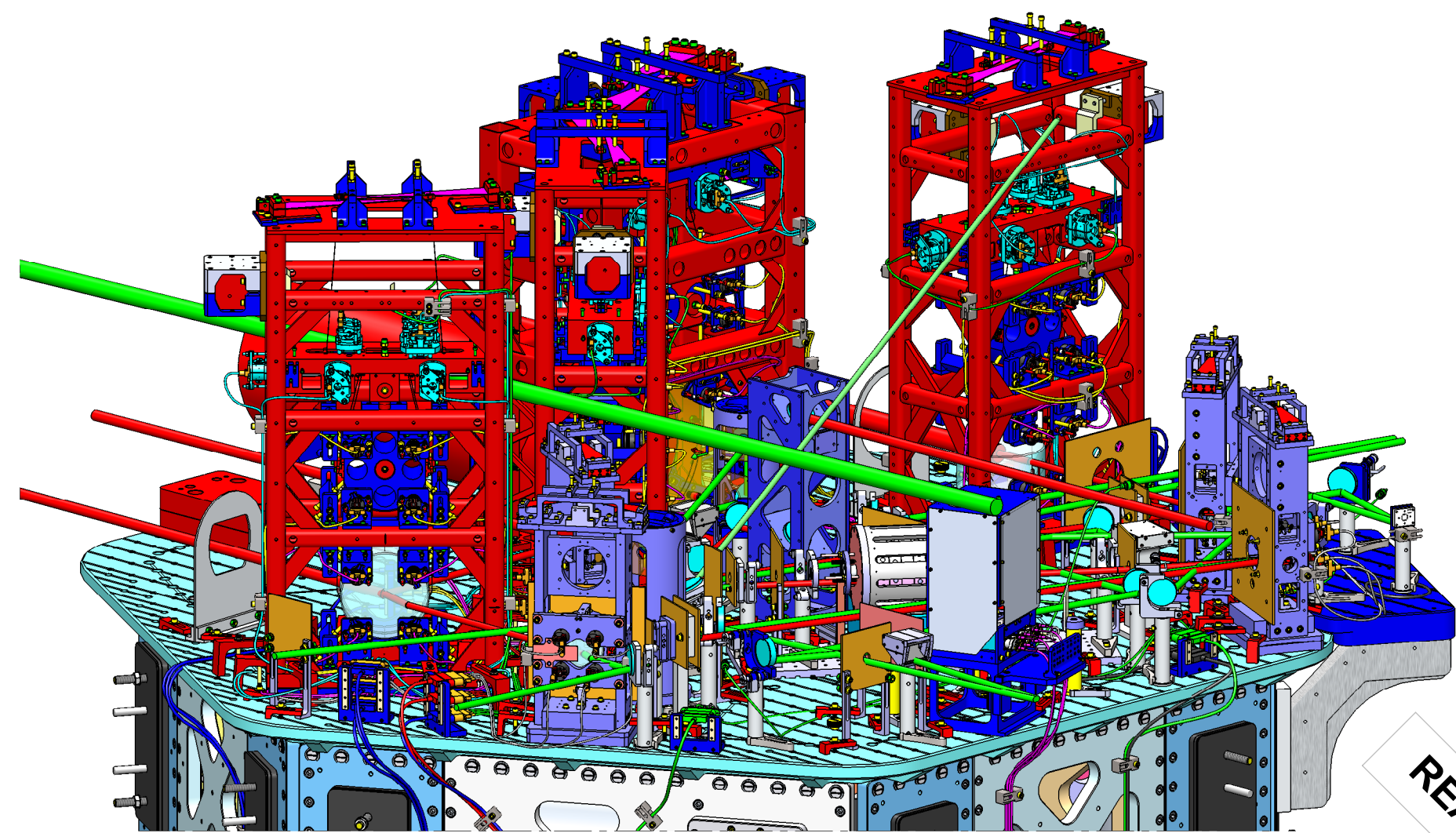
D0901083 AdvLIGO Systems, HAM2-H1 Top Level Chamber Assembly, ALL PART PDM REV-X:132, DRAWING PDM REV, X:013



LASER BEAMS - ORTHO VIEWS

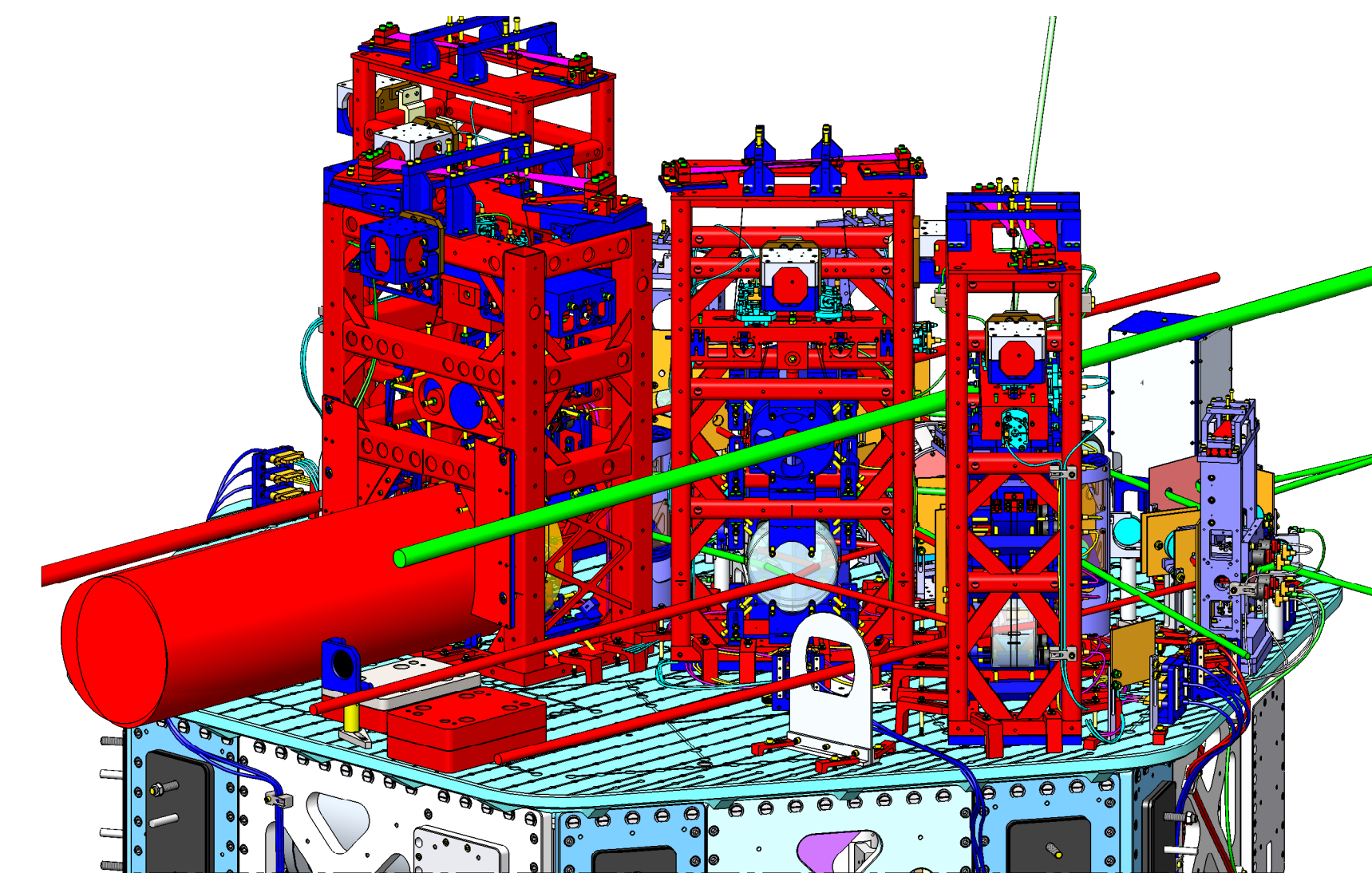
CALIFORNIA INSTITUTE OF TECHNOLOGY MASSACHUSETTS INSTITUTE OF TECHNOLOGY		REV.
SIZE	DWG. NO.	REV.
D	D0901083	v12
SCALE: 1:8	PROJECTION:	SHEET 3 OF 6

DD901083 Asst LIGO Systems: HAM2-H1 Top Level Chamber Assembly, ALL PART PDM REV-X:132, DRAWING PDM REV-X:013



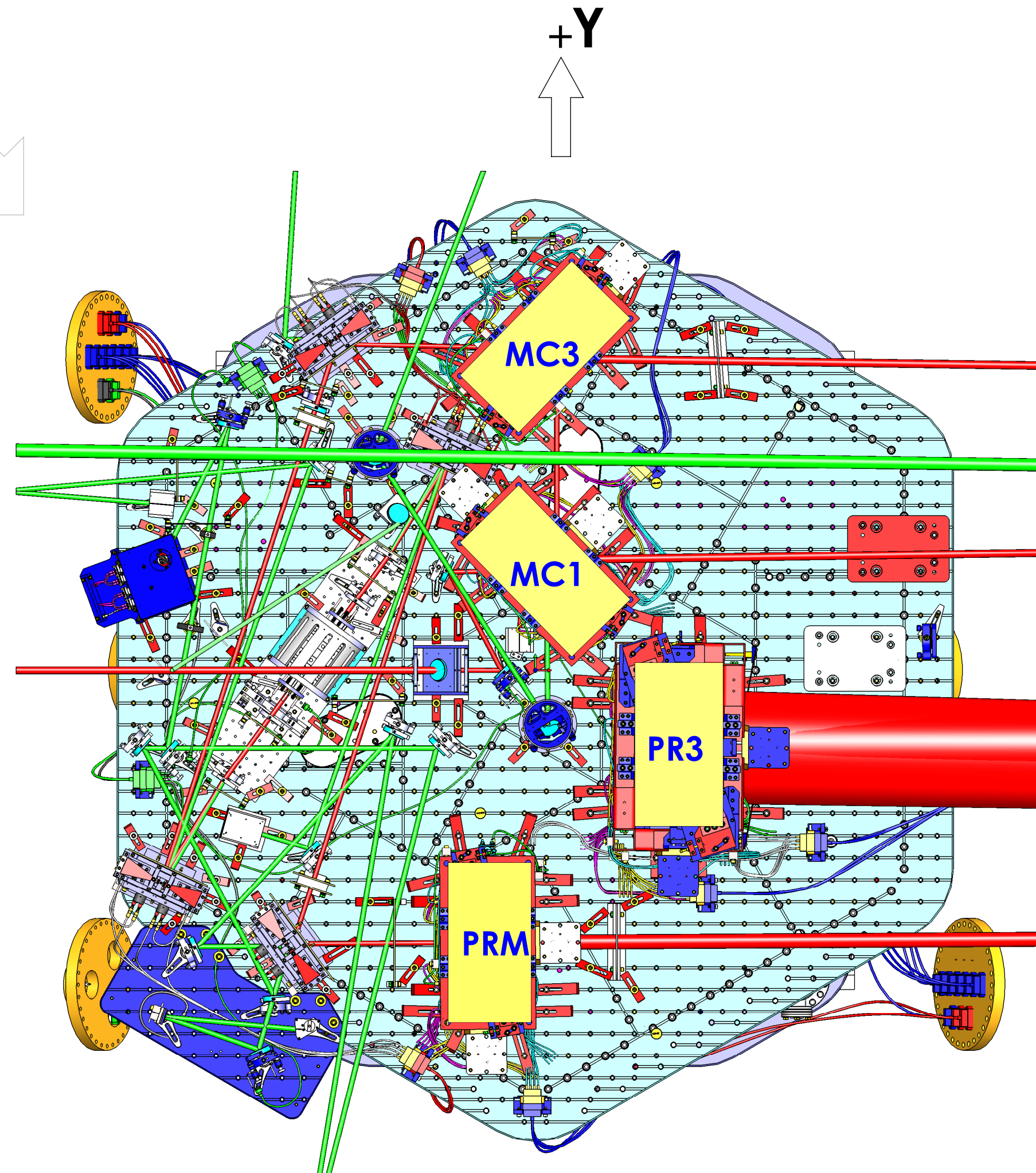
ISO REAR - LEFT

REAR L



ISO REAR - RIGHT

REAR R

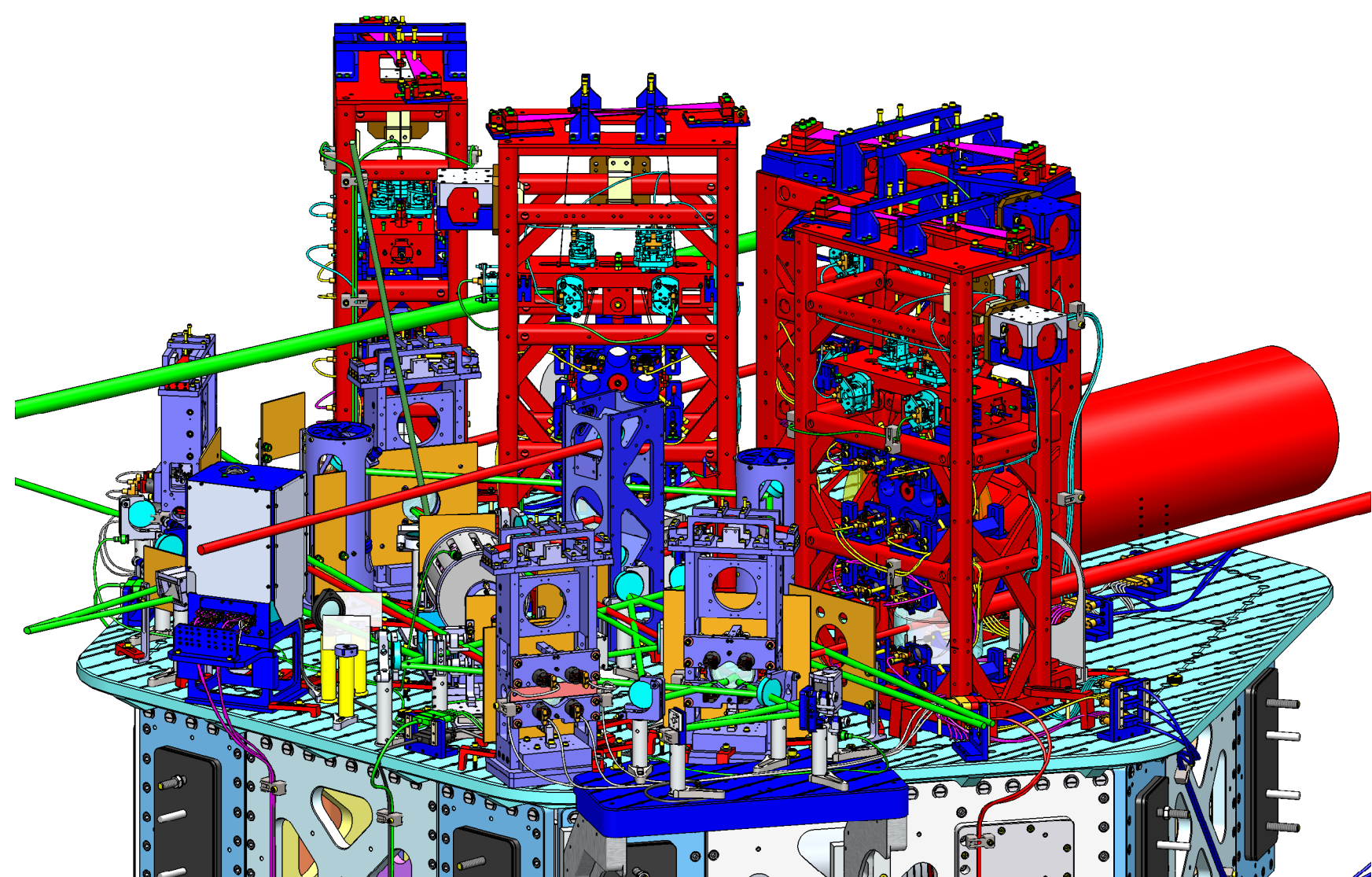


TOP VIEW

+Y

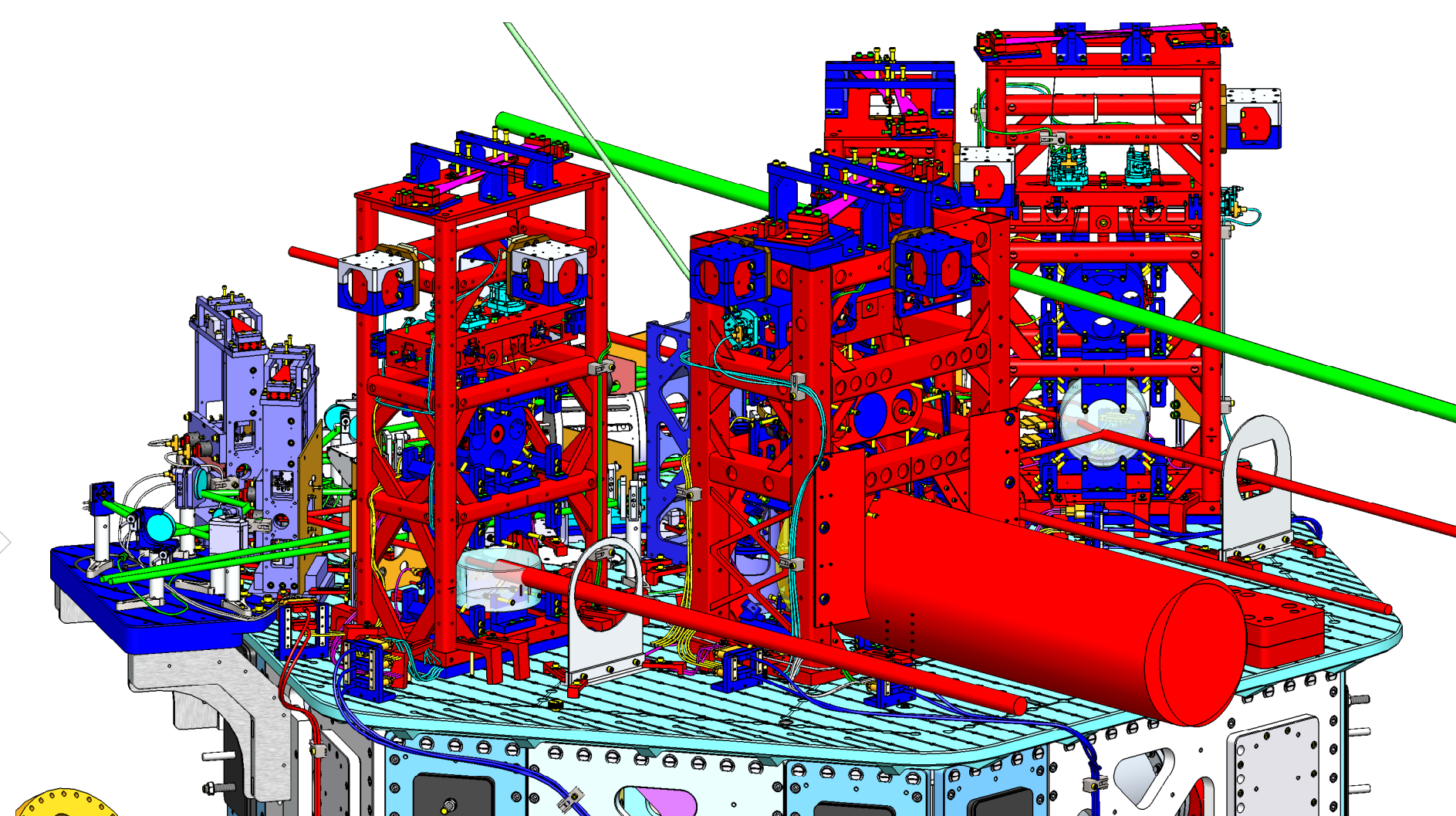
+X

HAM 3



ISO FRONT - LEFT

FRONT L



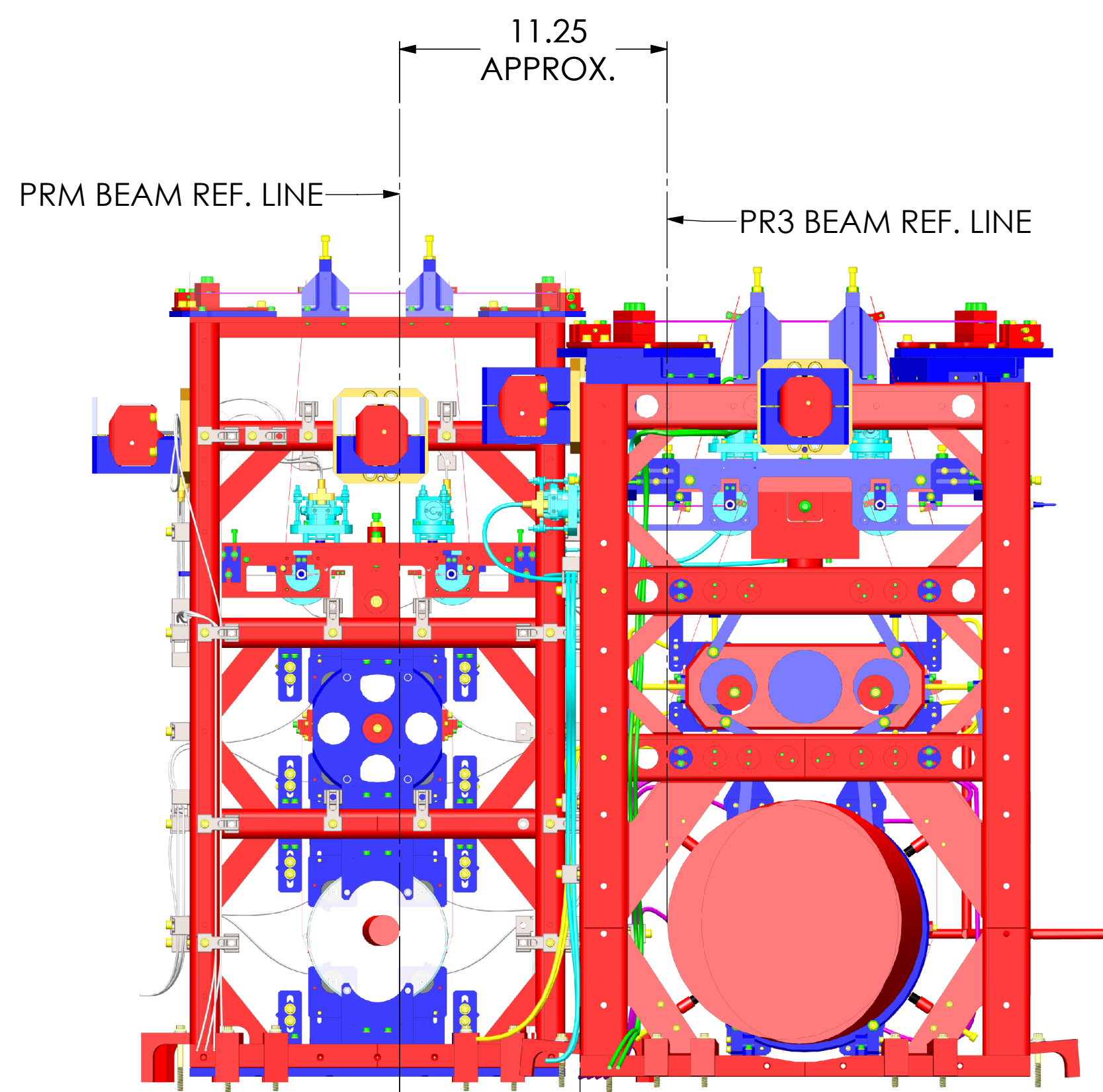
ISO FRONT - RIGHT

FRONT R

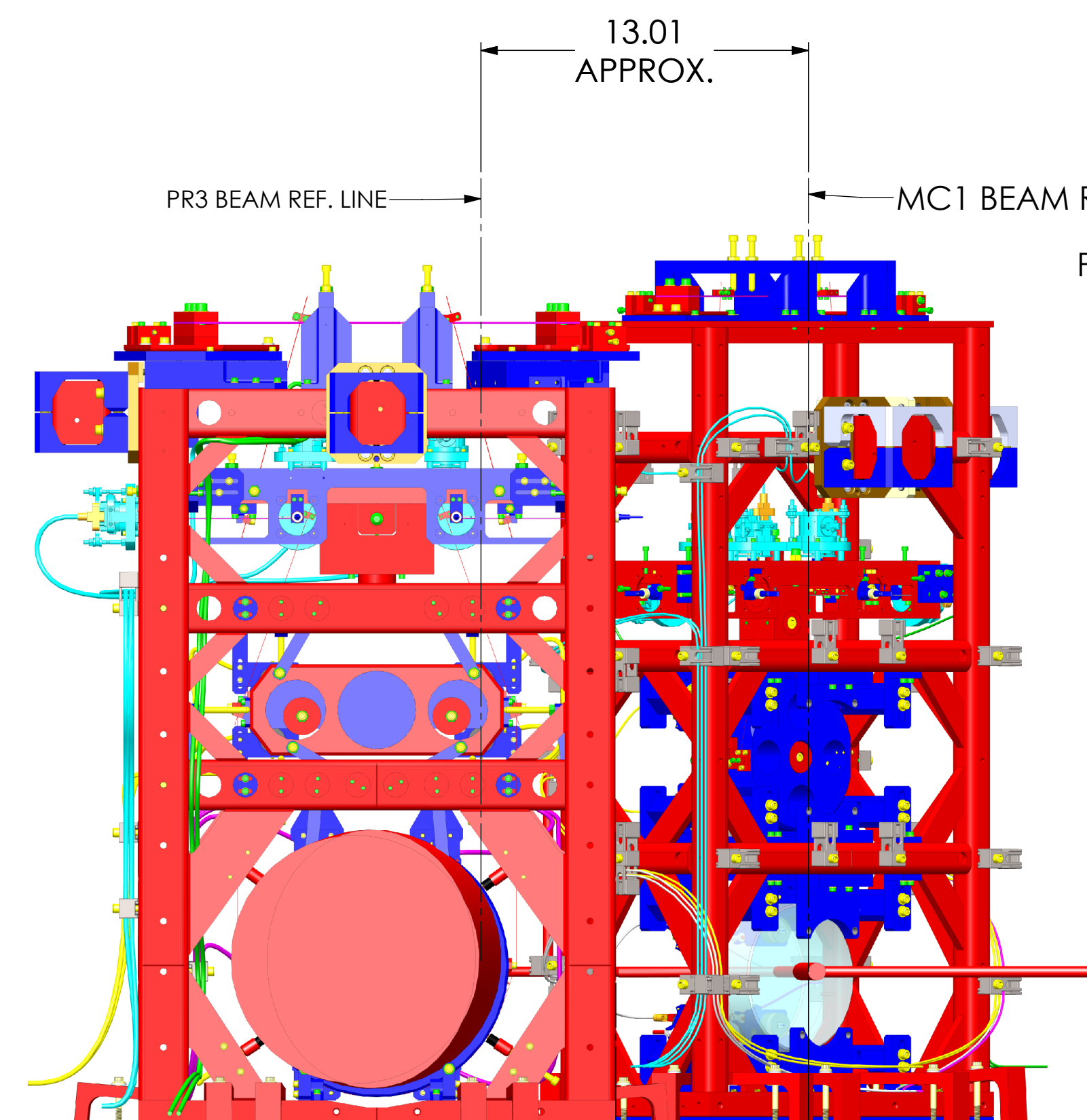
LASER BEAMS - ISO VIEWS

CALIFORNIA INSTITUTE OF TECHNOLOGY MASSACHUSETTS INSTITUTE OF TECHNOLOGY		REV.
SIZE	DWG. NO.	v12
D	D0901083	
SCALE: 1:8	PROJECTION:	SHEET 4 OF 6

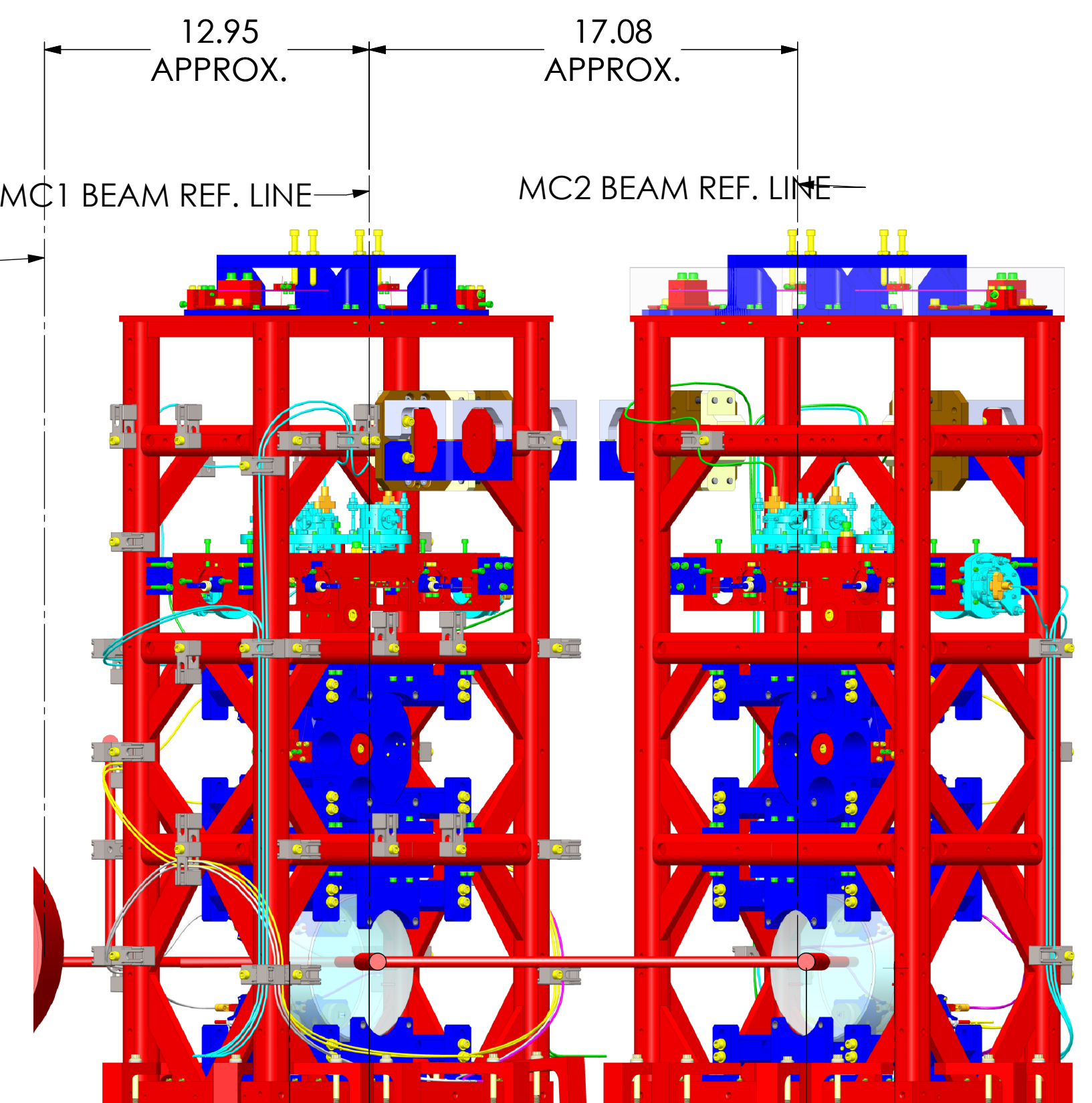
D0901083 Asst LIGO Systems: HAM2-H1 Top Level Chamber Assembly, ALL PART PDM REV: X-132, DRAWING PDM REV: X-013



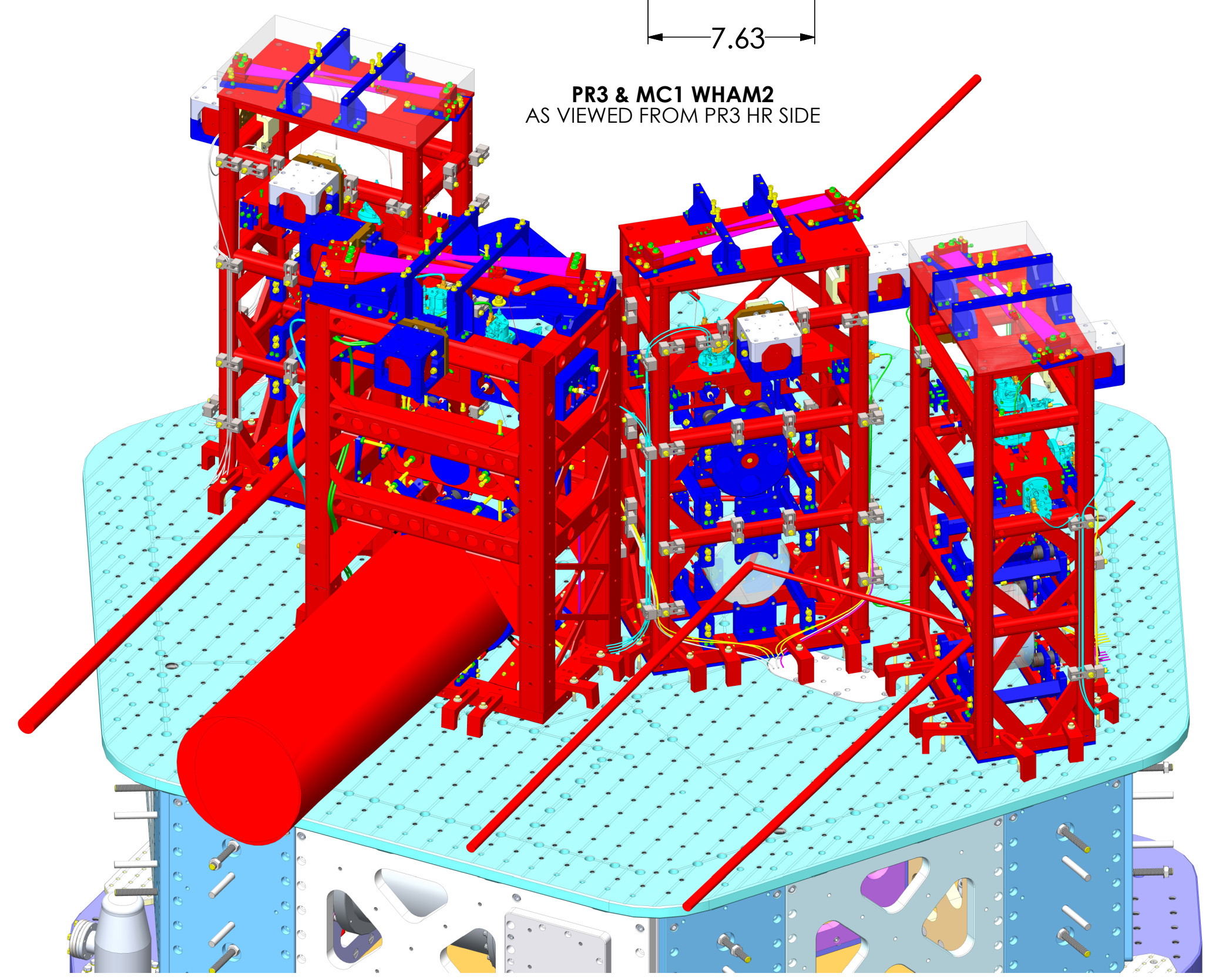
11.25 APPROX.
PRM BEAM REF. LINE
PR3 BEAM REF. LINE
7.58 APPROX.
PRM & PR3 WHAM2
AS VIEWED FROM HR SIDE



13.01 APPROX.
PR3 BEAM REF. LINE
MC1 BEAM REF. LINE
7.63
PR3 & MC1 WHAM2
AS VIEWED FROM PR3 HR SIDE



12.95 APPROX.
17.08 APPROX.
MC1 BEAM REF. LINE
MC2 BEAM REF. LINE
3.17 APPROX.
3.17 APPROX.
MC1 & MC3 WHAM2
AS VIEWED FROM PR3 HR SIDE



ISO VIEW, REAR LEFT

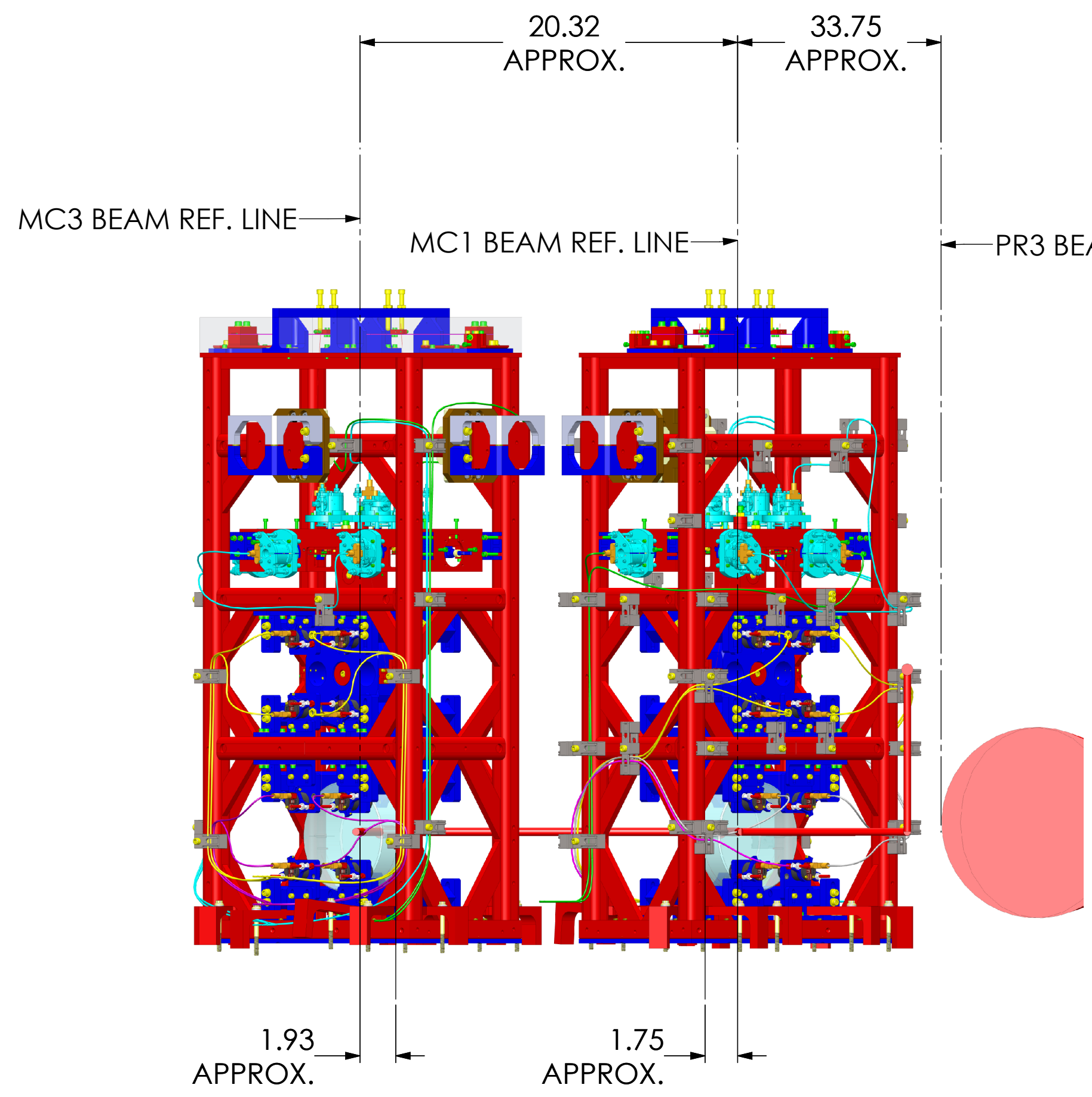
LASER BEAMS HR SIDE CLEARANCES

LIGO CALIFORNIA INSTITUTE OF TECHNOLOGY MASSACHUSETTS INSTITUTE OF TECHNOLOGY	
SIZE DWG. NO.	REV.
D D0901083	v12
SCALE: NTS	PROJECTION:
SHEET 5 OF 6	

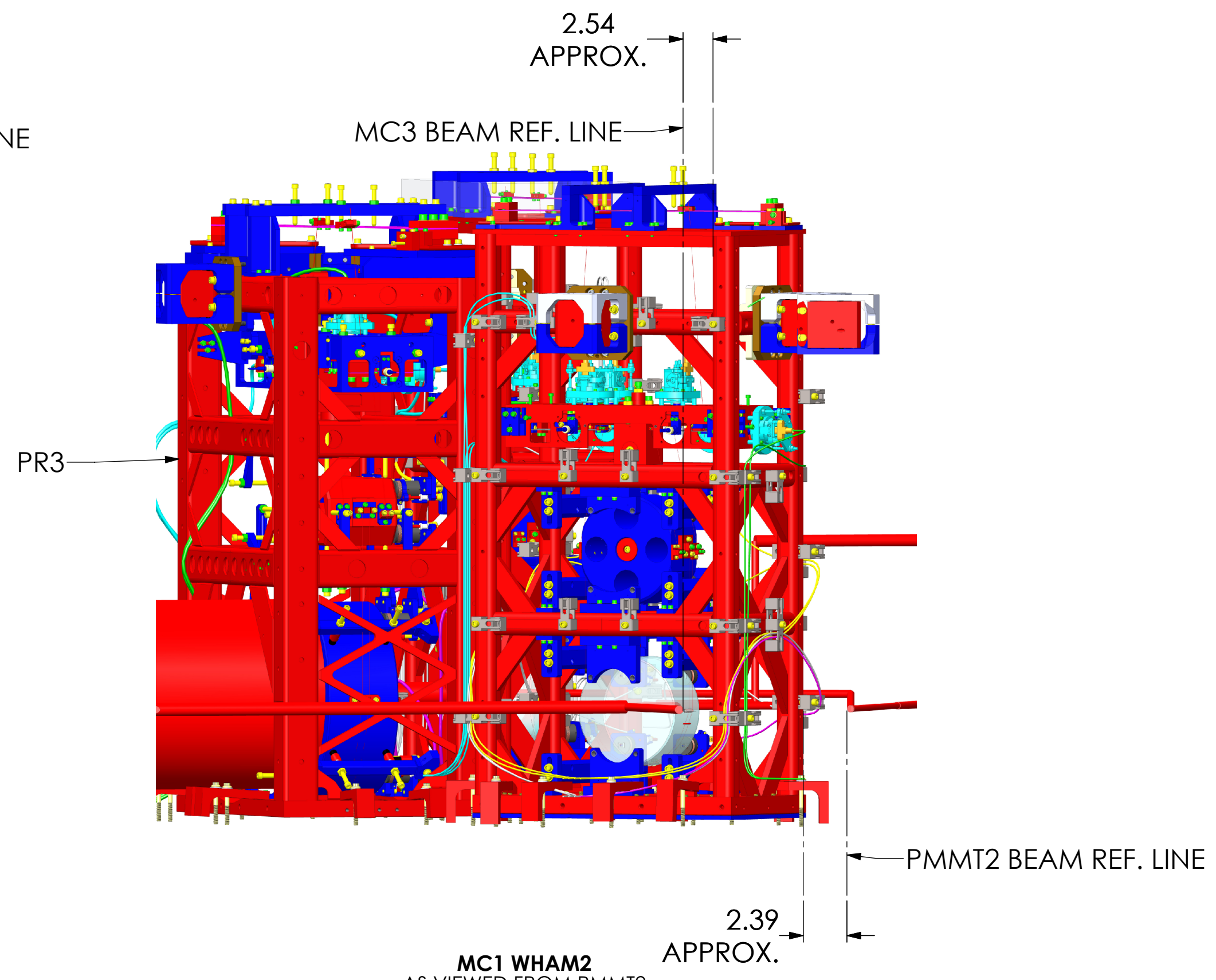
8 7 6 5 4 3 2 1

H
G
F
E
D
C
B
A

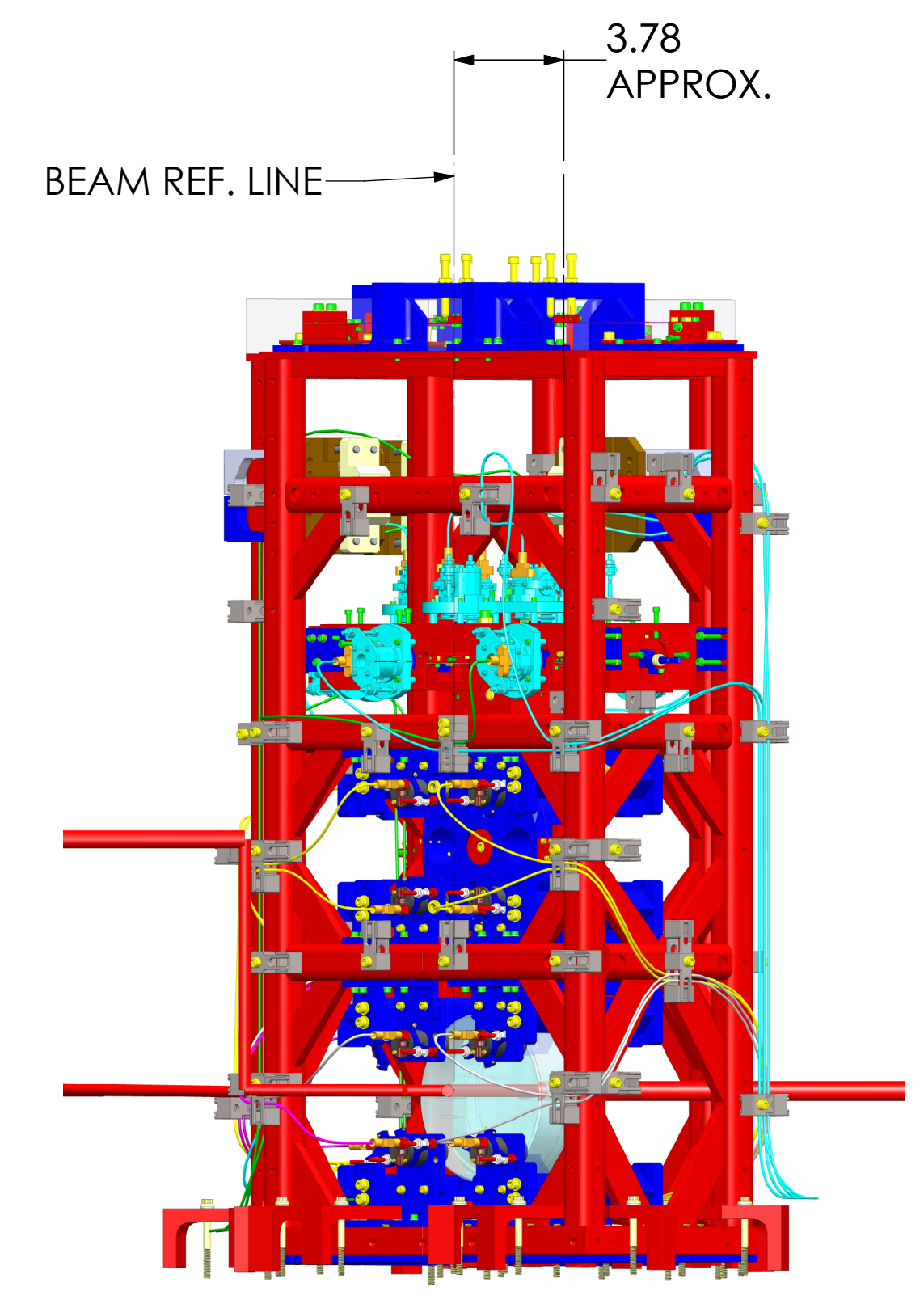
H
G
F
E
D
C
B
A



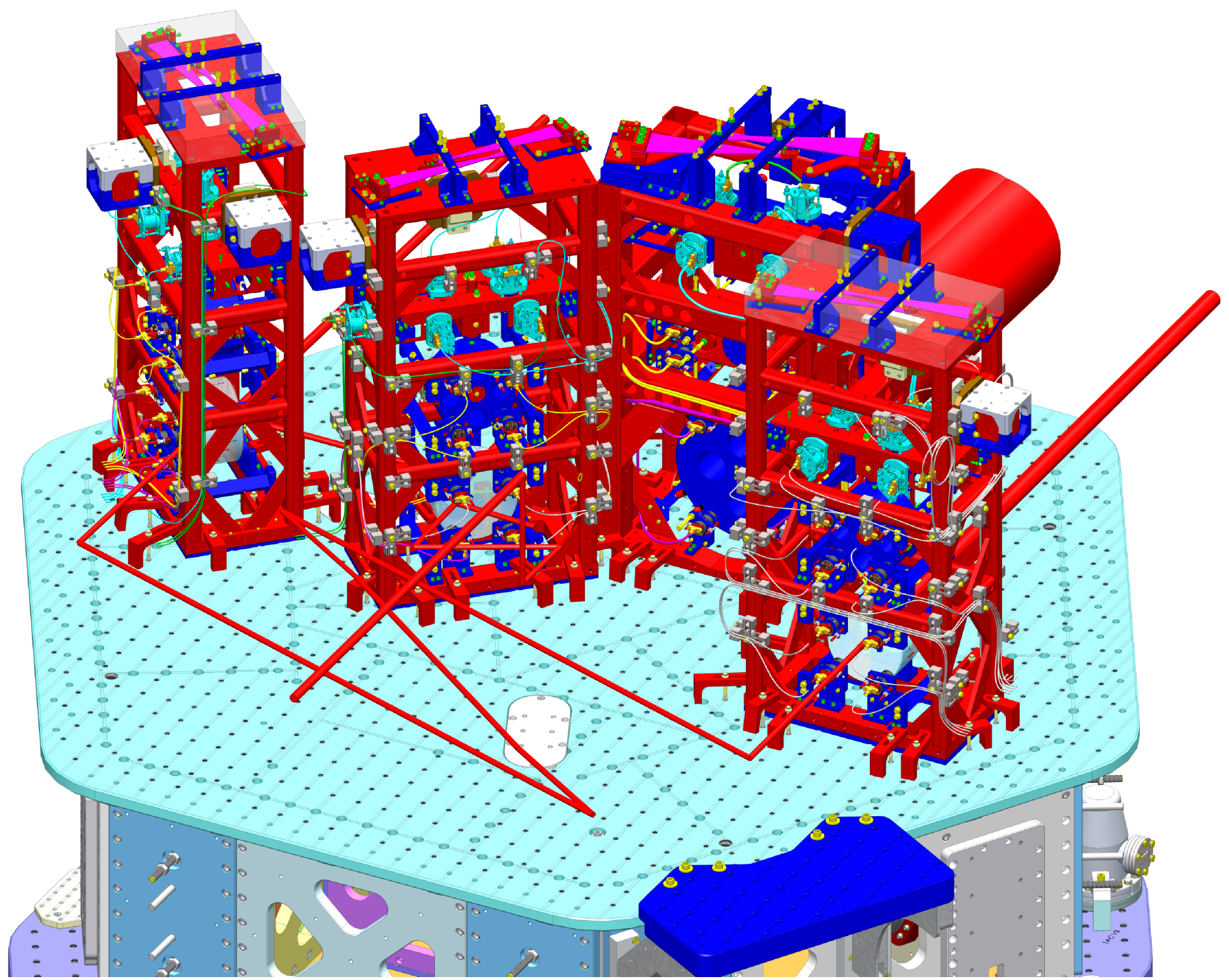
MC3 & MC1 WHAM2
AS VIEWED FROM AR SIDE



MC1 WHAM2
AS VIEWED FROM PMMT2



MC1 LWHAM2
ISO VIEW, REAR RIGHT



ISO VIEW, FRONT LEFT

LASER BEAMS AR SIDE CLEARANCES

LIGO CALIFORNIA INSTITUTE OF TECHNOLOGY MASSACHUSETTS INSTITUTE OF TECHNOLOGY	
SIZE DWG. NO.	REV.
D D0901083	v12
SCALE: NTS	PROJECTION:
SHEET 6 OF 6	

8 7 6 5 4 3 2 1

D0901083-AsstLIGO Systems-HAM2-H1 Top Level Chamber Assembly, ALL PART PDM REV., DRAWING PDM REV.:X-013