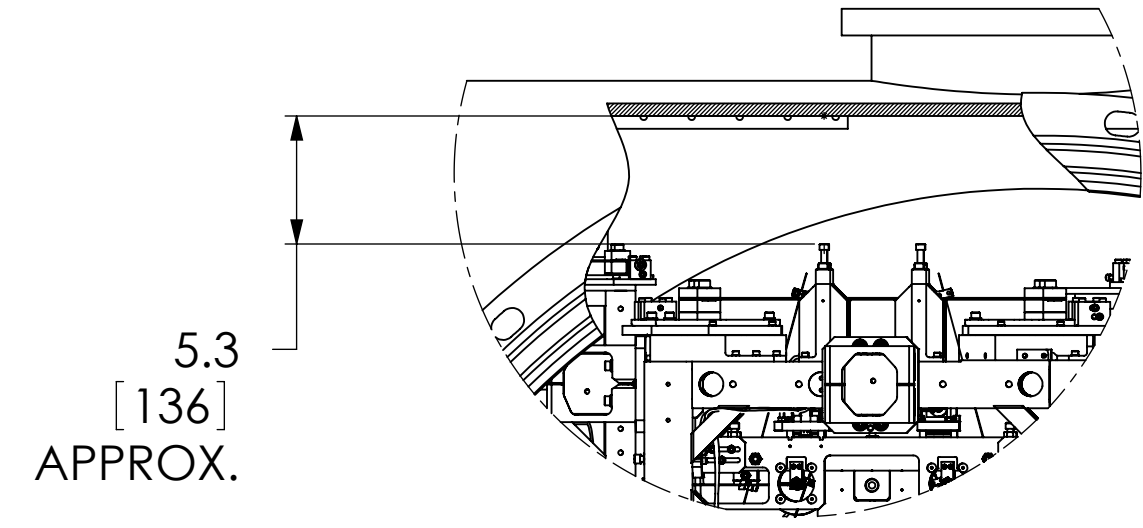
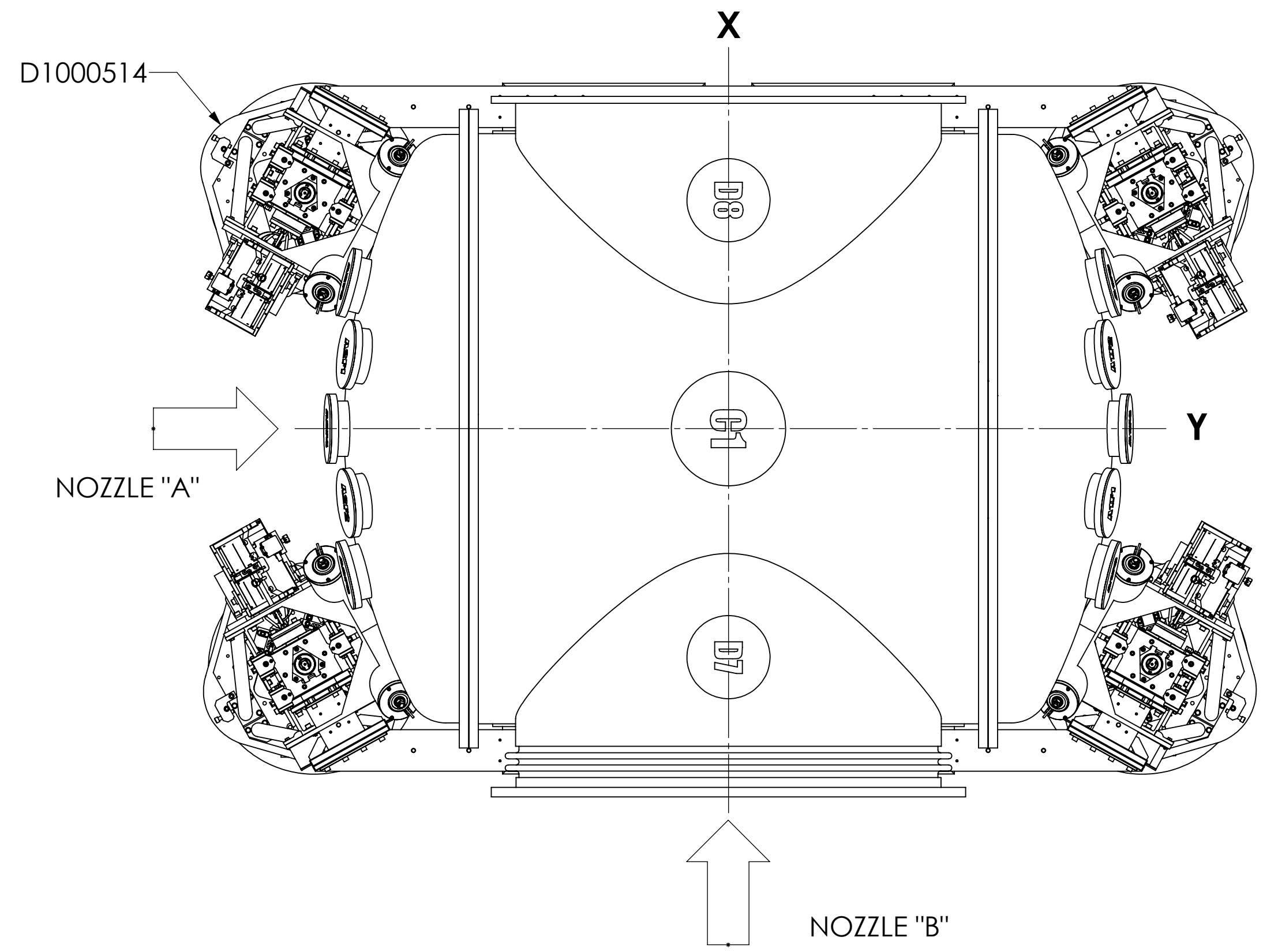


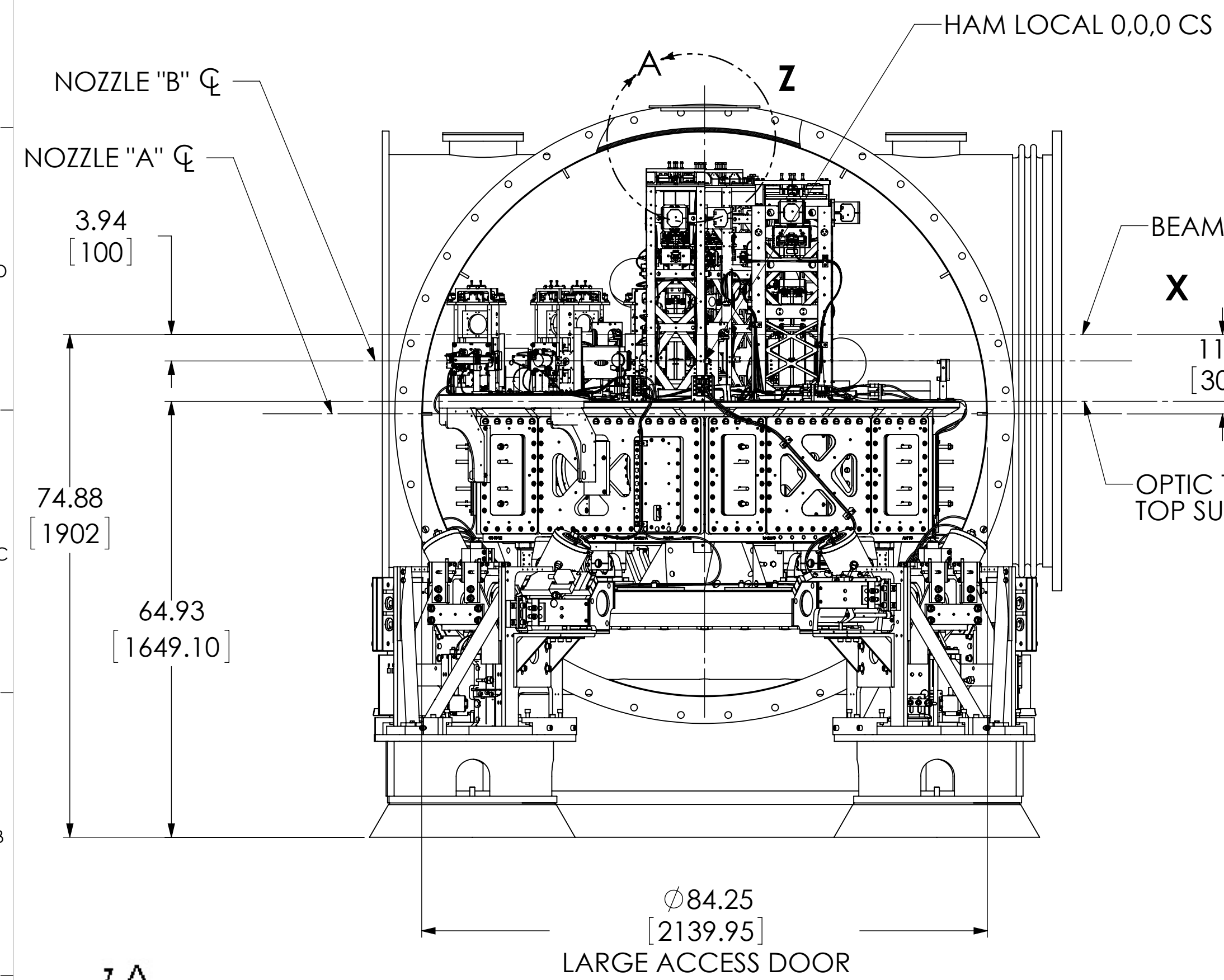
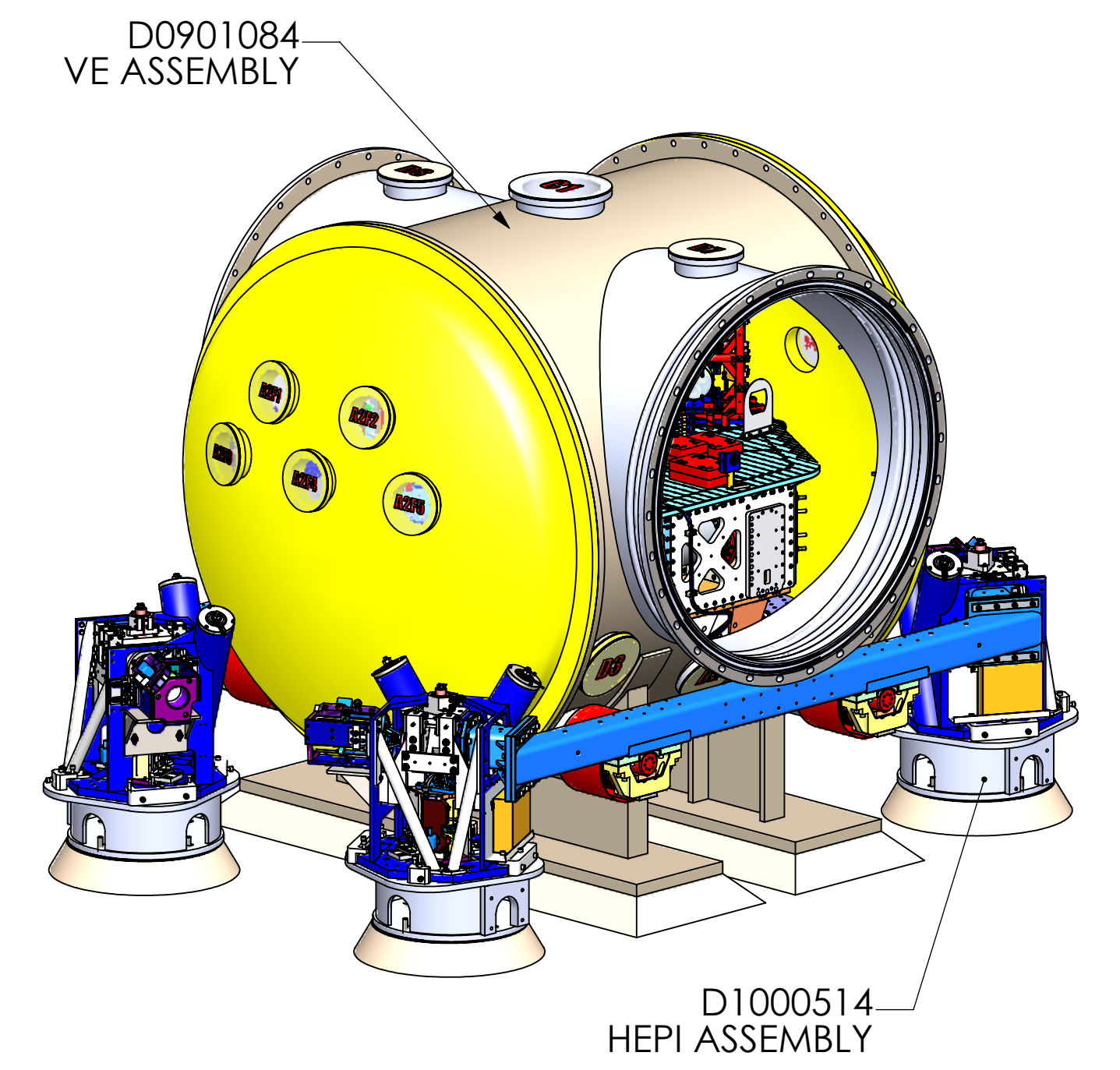
DETAIL A  
SCALE 1 : 8



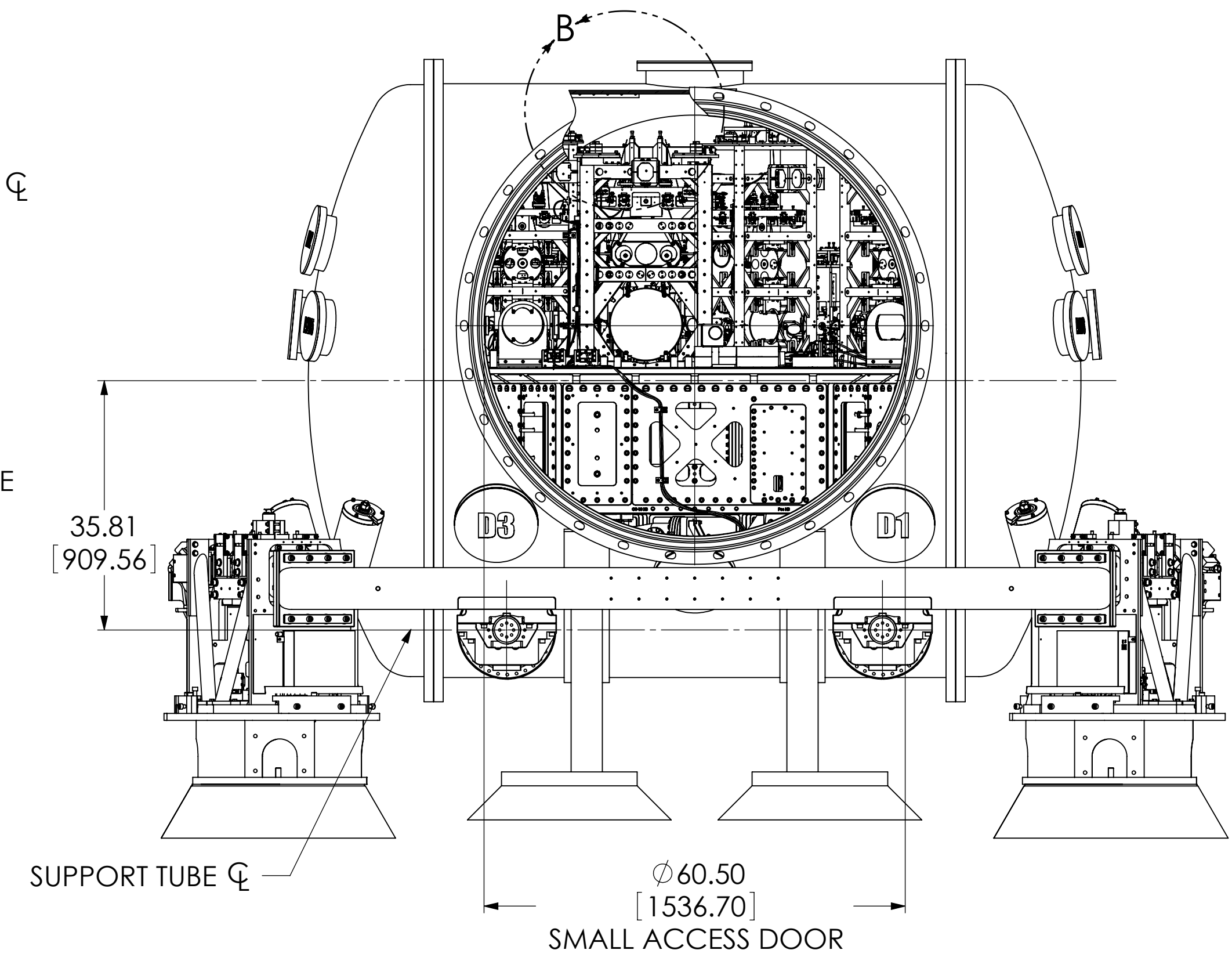
DETAIL B  
SCALE 1 : 8



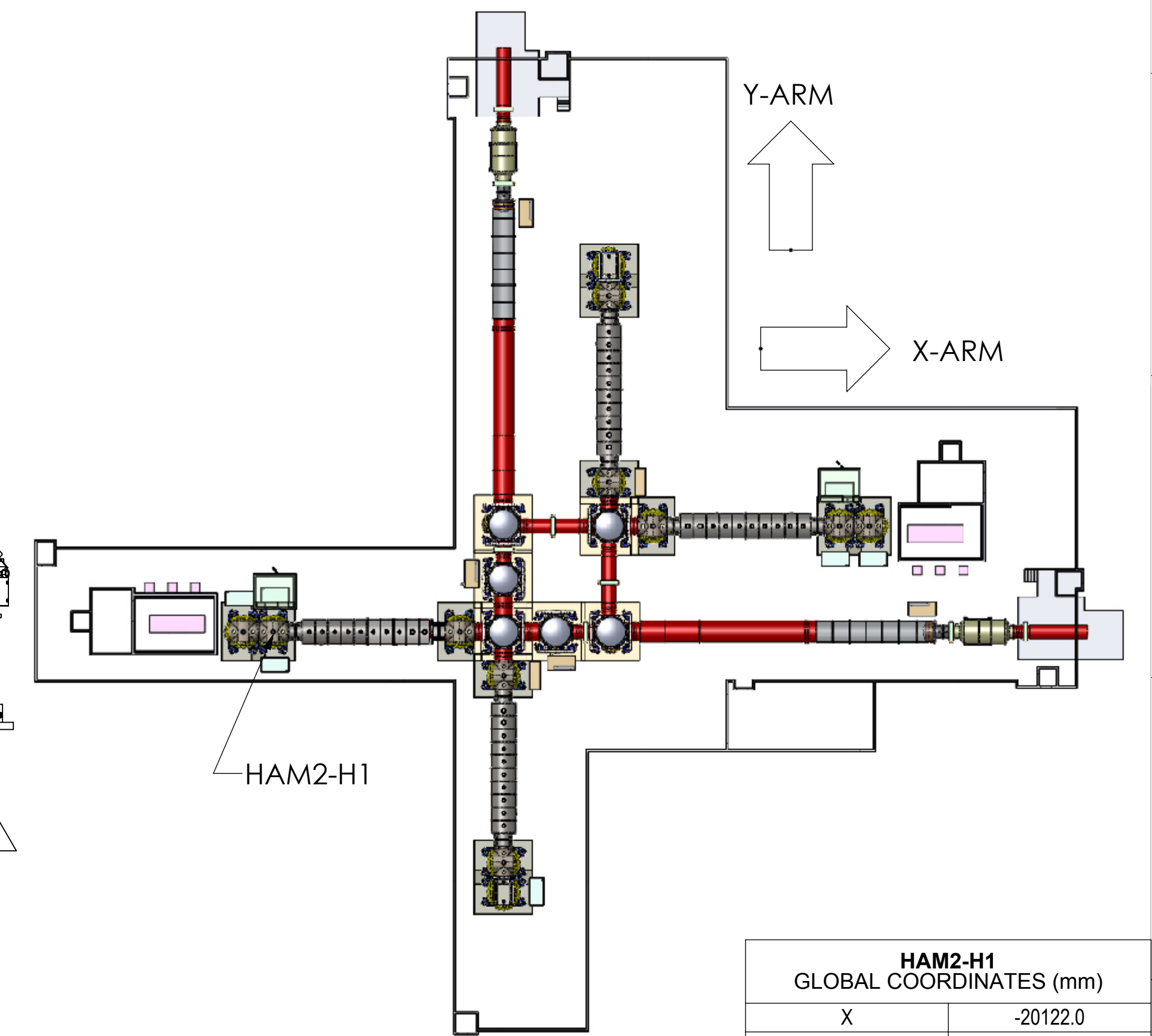
TOP VIEW



FRONT VIEW



RIGHT VIEW



HAM2-H1 GLOBAL COORDINATES (mm)	
X	-20122.0
Y	0.0
Z	0.0

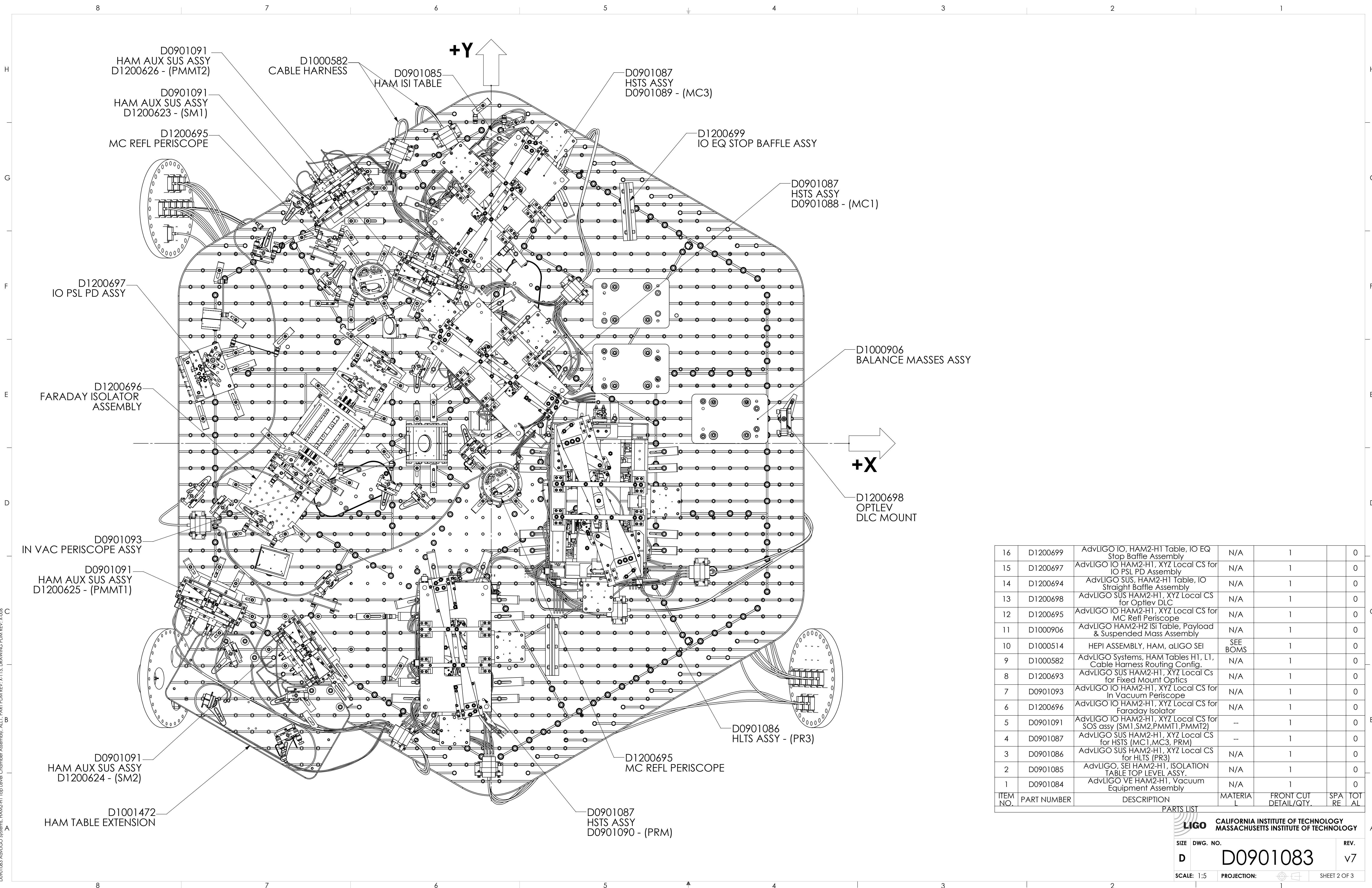


NOTES AND TOLERANCES: (UNLESS OTHERWISE SPECIFIED)	
1. INTERPRET DRAWING PER ASME Y14.5-1994.	
2. REMOVE ALL SHARP EDGES, .005-.015, FOR MACHINED PARTS. ROUND ALL EDGES APPROXIMATELY R.02 FOR SHEET METAL PARTS.	
3. DO NOT SCALE FROM DRAWING.	
4. ALL MACHINING FLUIDS MUST BE FULLY SYNTHETIC, FULLY WATER SOLUBLE AND FREE OF SULFUR, SILICONE, AND CHLORINE.	
MATERIAL	FINISH
--	-- $\mu$ inch

LIGO CALIFORNIA INSTITUTE OF TECHNOLOGY MASSACHUSETTS INSTITUTE OF TECHNOLOGY	
SYSTEM	SUB-SYSTEM
ADVANCED LIGO	SUS
NEXT ASSY	

PART NAME		HAM4-H1 TOP LEVEL CHAMBER ASSEMBLY	
DESIGNER	SIZE	DWG. NO.	REV.
DRAFTER	N. CUSTARD	D	D0900365
CHECKER			v7
APPROVAL	SCALE: 1:16	PROJECTION:	SHEET 1 OF 3

D0901084 Adv LIGO Systems: HAM2-H1 Top Level Chamber Assembly, ALL PART PDM REV-X-115, DRAWING PDM REV-X-006



D0901083 AdvLIGO Systems, HAM2-H1 Top Level Chamber Assembly, ALL PART PDM REV-X-115, DRAWING PDM REV-X-005

ITEM NO.	PART NUMBER	DESCRIPTION	MATERIAL	FRONT CUT DETAIL/QTY.	SPA RE	TOT AL
16	D1200699	AdvLIGO IO, HAM2-H1 Table, IO EQ Stop Baffle Assembly	N/A	1		0
15	D1200697	AdvLIGO IO HAM2-H1, XYZ Local CS for IO PSL PD Assembly	N/A	1		0
14	D1200694	AdvLIGO SUS, HAM2-H1 Table, IO Straight Baffle Assembly	N/A	1		0
13	D1200698	AdvLIGO SUS HAM2-H1, XYZ Local CS for Optlev DLC	N/A	1		0
12	D1200695	AdvLIGO IO HAM2-H1, XYZ Local CS for MC Refl Periscope	N/A	1		0
11	D1000906	AdvLIGO HAM2-H2 ISI Table, Payload & Suspended Mass Assembly	N/A	1		0
10	D1000514	HEPI ASSEMBLY, HAM, aLIGO SEI	SEE BOMS	1		0
9	D1000582	AdvLIGO Systems, HAM Tables H1, L1, Cable Harness Routing Config.	N/A	1		0
8	D1200693	AdvLIGO SUS HAM2-H1, XYZ Local CS for Fixed Mount Optics	N/A	1		0
7	D0901093	AdvLIGO IO HAM2-H1, XYZ Local CS for In Vacuum Periscope	N/A	1		0
6	D1200696	AdvLIGO IO HAM2-H1, XYZ Local CS for Faraday Isolator	N/A	1		0
5	D0901091	AdvLIGO IO HAM2-H1, XYZ Local CS for SOS assy (SM1, SM2, PMMT1, PMMT2)	--	1		0
4	D0901087	AdvLIGO SUS HAM2-H1, XYZ Local CS for HSTS (MC1, MC3, PRM)	--	1		0
3	D0901086	AdvLIGO SUS HAM2-H1, XYZ Local CS for HLTS (PR3)	N/A	1		0
2	D0901085	AdvLIGO, SEI HAM2-H1, ISOLATION TABLE TOP LEVEL ASSY.	N/A	1		0
1	D0901084	AdvLIGO VE HAM2-H1, Vacuum Equipment Assembly	N/A	1		0

**LIGO** CALIFORNIA INSTITUTE OF TECHNOLOGY  
MASSACHUSETTS INSTITUTE OF TECHNOLOGY

SIZE DWG. NO. REV.  
**D** **D0901083** v7  
SCALE: 1:5 PROJECTION: SHEET 2 OF 3

8

7

6

5

4

3

2

1

H

H

G

G

F

F

E

E

D

D

C

C

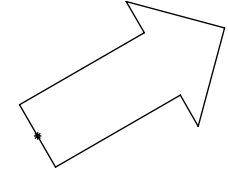
B

B

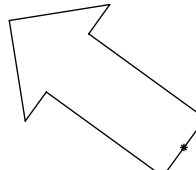
A

A

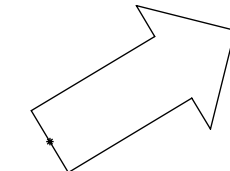
FRONT VIEW



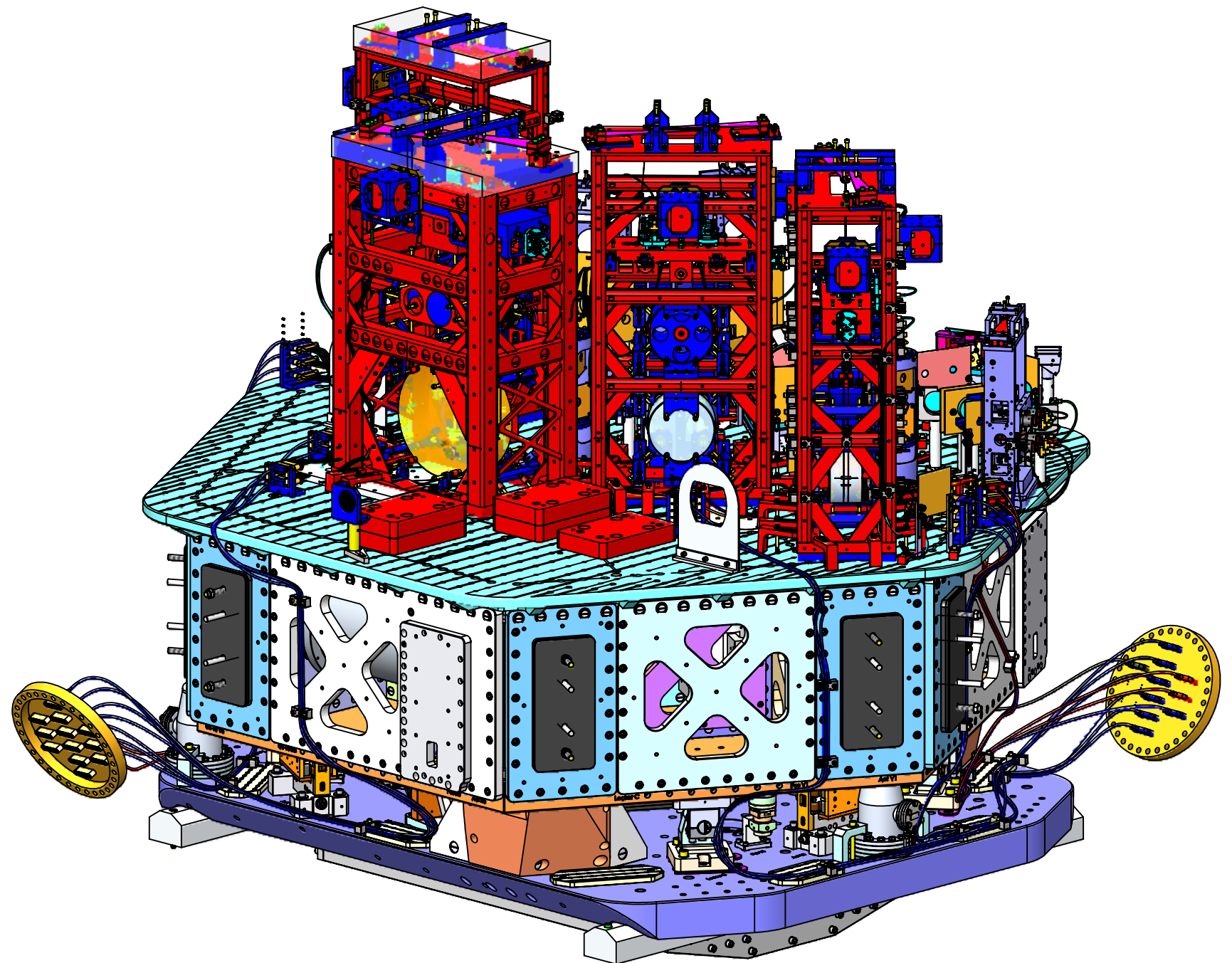
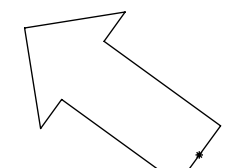
RIGHT SIDE VIEW



LEFT SIDE VIEW



FRONT SIDE VIEW



<b>LIGO</b> CALIFORNIA INSTITUTE OF TECHNOLOGY MASSACHUSETTS INSTITUTE OF TECHNOLOGY		
SIZE	DWG. NO.	REV.
D	D0901125	v7
SCALE: 1:8	PROJECTION:	SHEET 3 OF 3

DD0901083 Asst LIGO Systems: HAM2-H1 Top Level Chamber Assembly, ALL PART PDM REV-X-115, DRAWING PDM REV-X-006