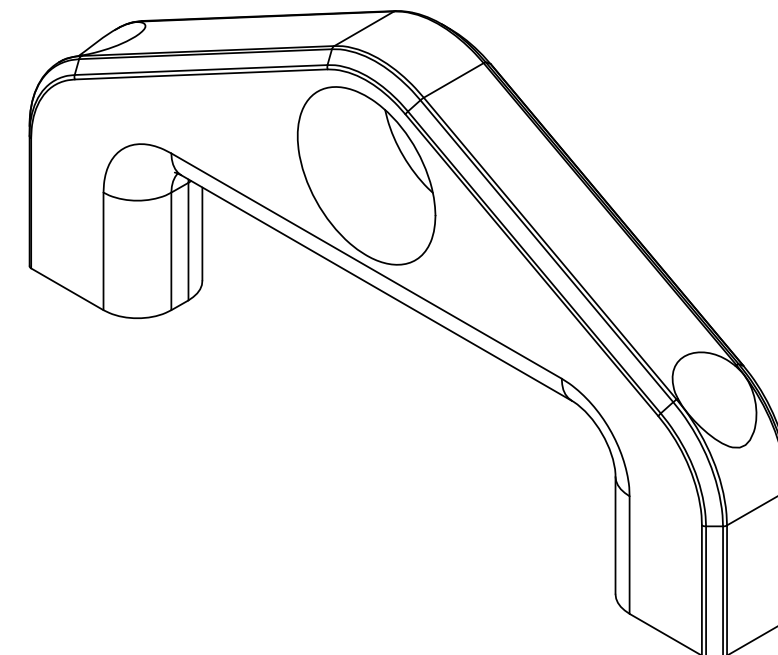
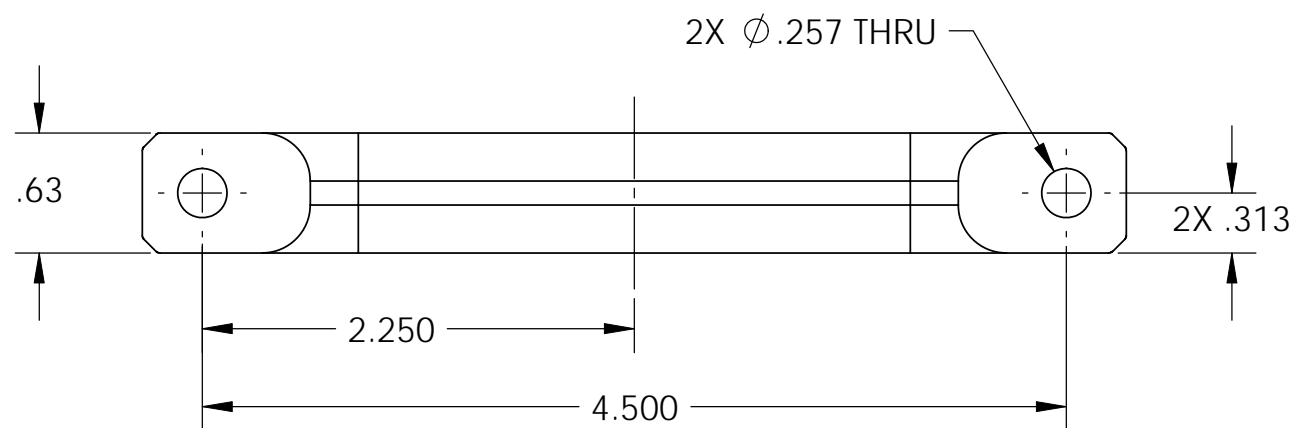
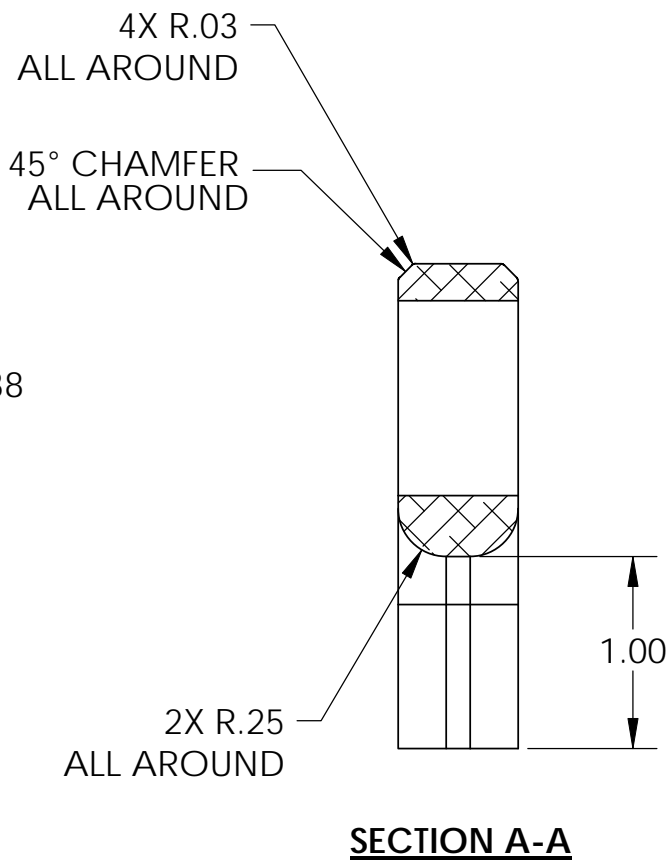
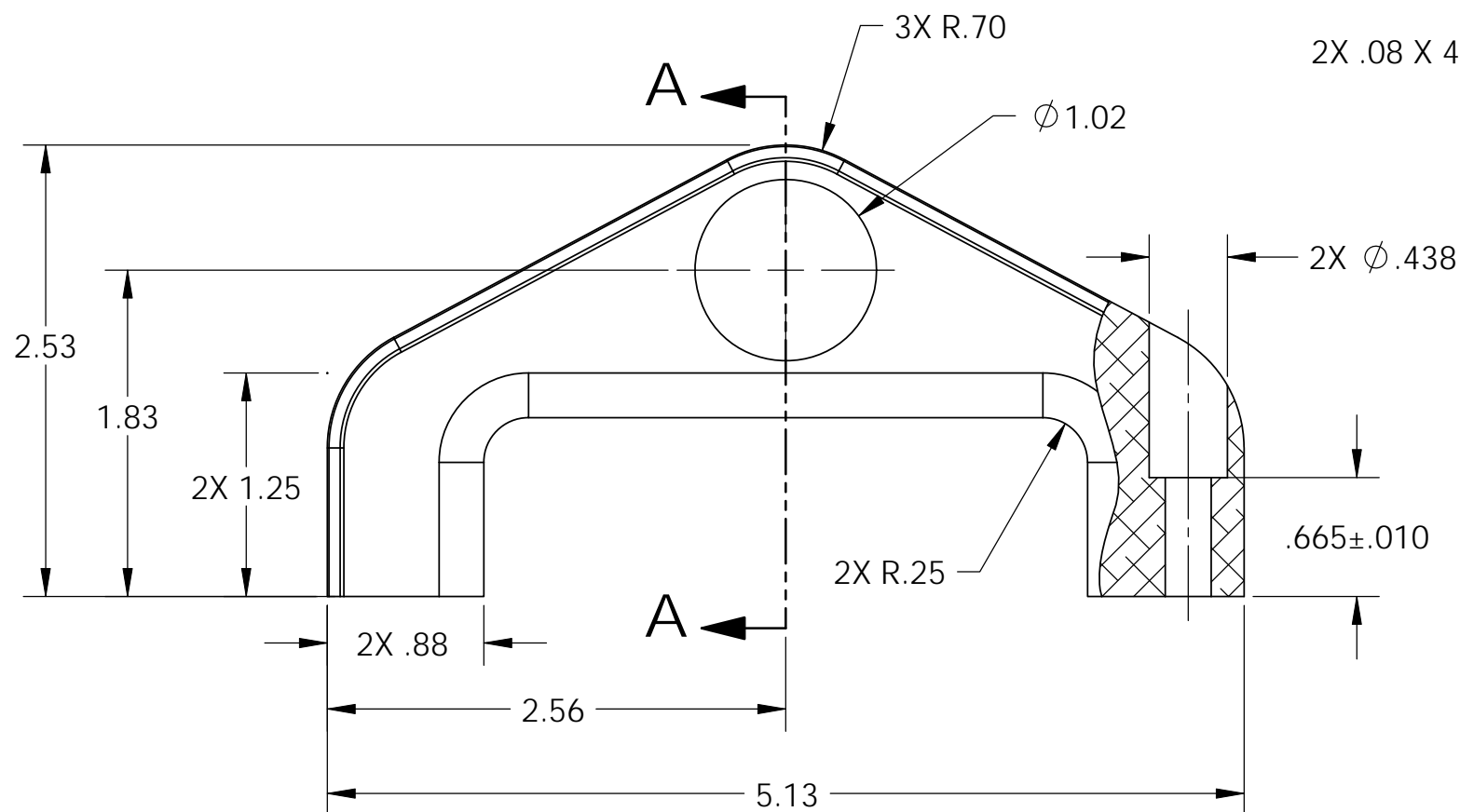


NOTES CONTINUED:  
 ⑤ SCRIBE, ENGRAVE, OR MECHANICALLY STAMP (NO INKS OR DYES) DRAWING PART NUMBER AND REVISION ON NOTED SURFACE FOLLOWED ON THE NEXT LINE BY A THREE DIGIT SERIAL NUMBER. SERIAL NUMBERS START AT 001 FOR THE FIRST ARTICLE AND PROCEED CONSECUTIVELY. USE .07" HIGH CHARACTERS. EXAMPLE: DXXXXXX-VY, S/N 001. A VIBRATORY TOOL MAY BE USED.

REV.	DATE	DCN #	DRAWING TREE #
-	-	REFER TO E0900200-v1	-
-	-	-	-
-	-	-	-



NOTES AND TOLERANCES: (UNLESS OTHERWISE SPECIFIED)				LIGO CALIFORNIA INSTITUTE OF TECHNOLOGY MASSACHUSETTS INSTITUTE OF TECHNOLOGY		PART NAME	
DIMENSIONS ARE IN INCHES TOLERANCES: .XX ± 0.01 .XXX ± 0.005 ANGULAR ± 0.5°				1. INTERPRET DRAWING PER ASME Y14.5-1994. 2. REMOVE ALL SHARP EDGES, R.02 MIN. 3. DO NOT SCALE FROM DRAWING. 4. ALL MACHINING FLUIDS SHALL BE WATER SOLUBLE AND FREE OF SULFUR, CHLORINE AND SILICONE, SUCH AS CINCINNATI MILACRON'S CIMTECH 410.		Handle, Cover Lid, Optic Container	
						MATERIAL 6061-T6 Alum FINISH 32 μinch	
				SYSTEM ADVANCED LIGO SUB-SYSTEM SUS		DESIGNER ED CHAVEZ 14 JUL 2009 DRAFTER	
				NEXT ASSY Optic Container		SIZE DWG. NO. B D0901064 CHECKER REFER TO E0900200-v1 APPROVAL REFER TO E0900200-v1	
						SCALE: 1:1 PROJECTION: SHEET 1 OF 1	

D0901064 Handle, Cover Lid, Alum Box Rnd., PART PDM REV: X-001, DRAWING PDM REV: X-002