

4

3

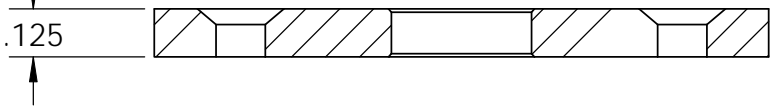
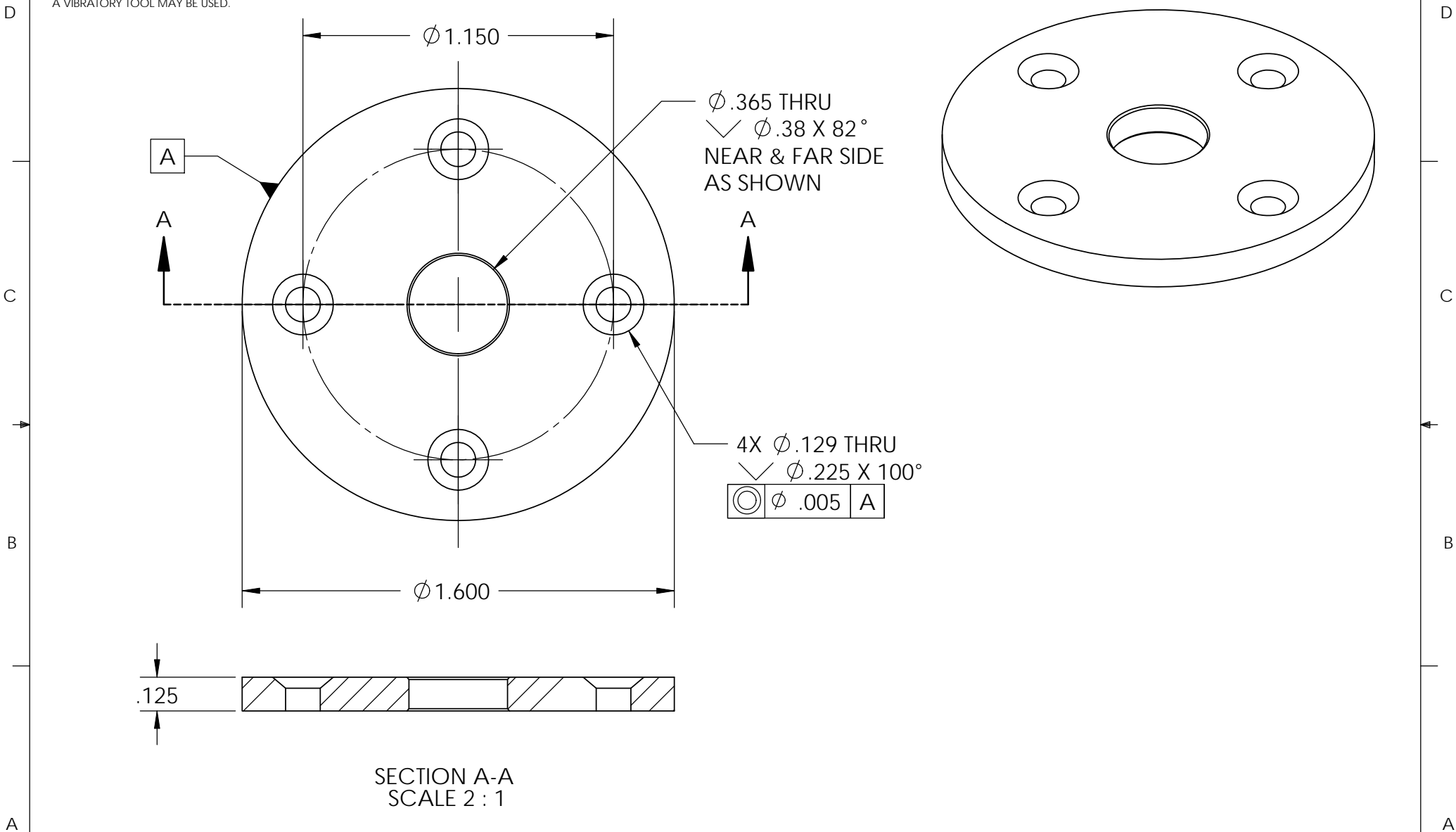
2

1

NOTES CONTINUED:

⑤ SCRIBE, ENGRAVE, OR MECHANICALLY STAMP (NO INKS OR DYES) DRAWING PART NUMBER AND REVISION ON NOTED SURFACE FOLLOWED ON THE NEXT LINE BY A THREE DIGIT SERIAL NUMBER. SERIAL NUMBERS START AT 001 FOR THE FIRST ARTICLE AND PROCEED CONSECUTIVELY. USE .07" HIGH CHARACTERS. EXAMPLE: DXXXXXXX-VY, S/N 001. A VIBRATORY TOOL MAY BE USED.

REV.	DATE	DCN #	DRAWING TREE #
-	-	REFER TO E0900200-v1	-
-	-	-	-
-	-	-	-



SECTION A-A
SCALE 2 : 1

NOTES AND TOLERANCES: (UNLESS OTHERWISE SPECIFIED)

DIMENSIONS ARE IN INCHES

TOLERANCES:
XX ± 0.01
XXX ± 0.005

ANGULAR ± 0.5°

1. INTERPRET DRAWING PER ASME Y14.5-1994.	
2. REMOVE ALL SHARP EDGES, R.02 MIN.	
3. DO NOT SCALE FROM DRAWING.	
4. ALL MACHINING FLUIDS SHALL BE WATER SOLUBLE AND FREE OF SULFUR, CHLORINE AND SILICONE, SUCH AS CINCINNATI MILACRON'S CIMTECH 410.	
MATERIAL	17-4 SS
FINISH	32 μinch

LIGO CALIFORNIA INSTITUTE OF TECHNOLOGY
MASSACHUSETTS INSTITUTE OF TECHNOLOGY

SYSTEM: **ADVANCED LIGO** SUB-SYSTEM: **COC**

NEXT ASSY: **Optic Container**

PART NAME				Plate, Retaining Screw, Mirror Wedge			
DESIGNER	ED CHAVEZ	16 JUN 2009	SIZE	DWG. NO.	REV.		
DRAFTER	ED CHAVEZ	14 JUL 2009	A	D0901063	v1		
CHECKER	REFER TO E0900200-v1		SCALE: 1:1	PROJECTION:	SHEET 1 OF 1		
APPROVAL	REFER TO E0900200-v1						