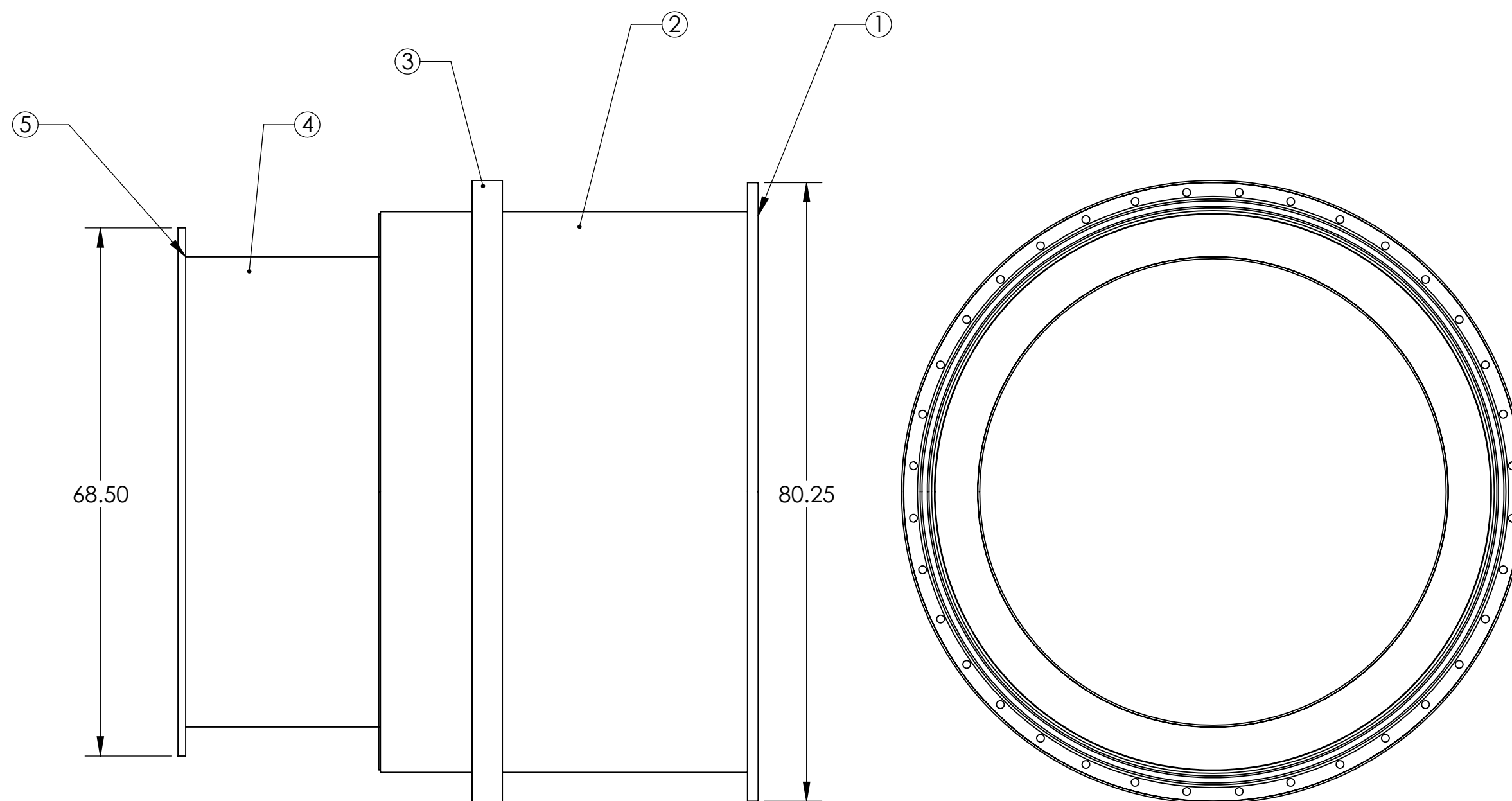
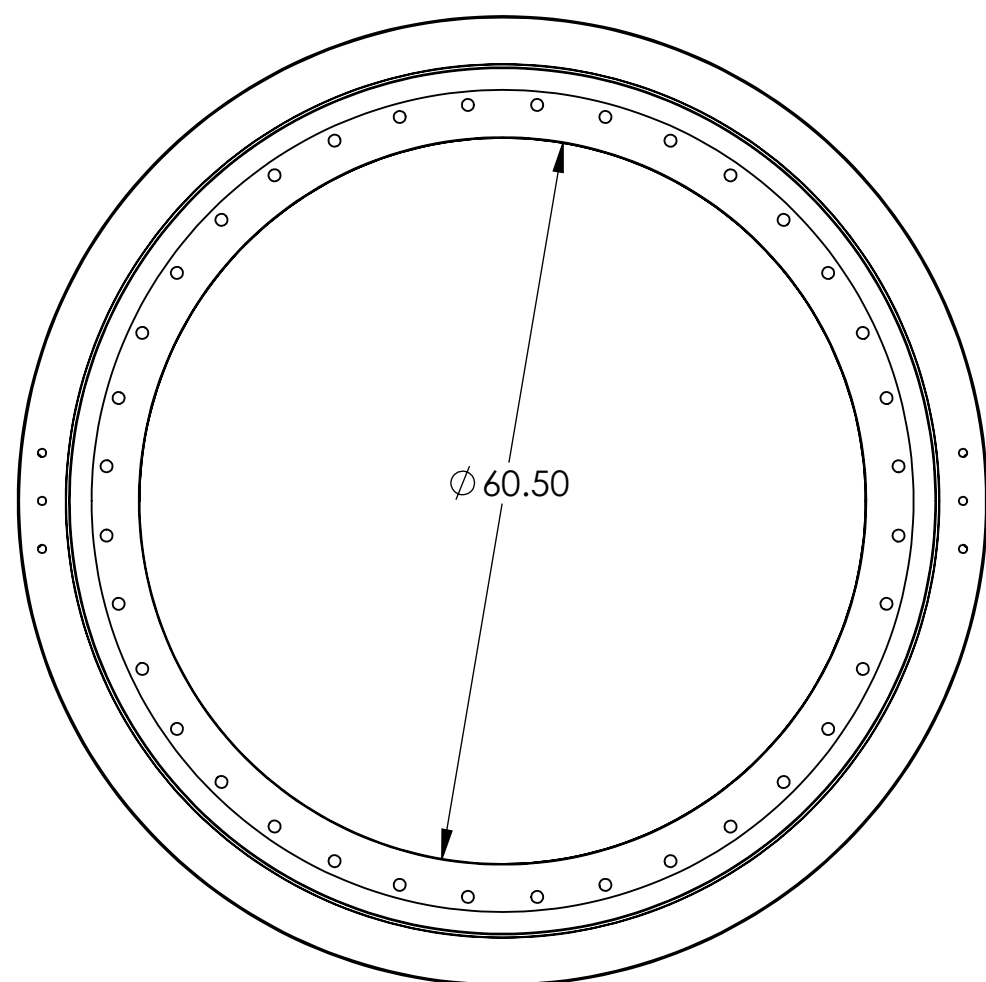
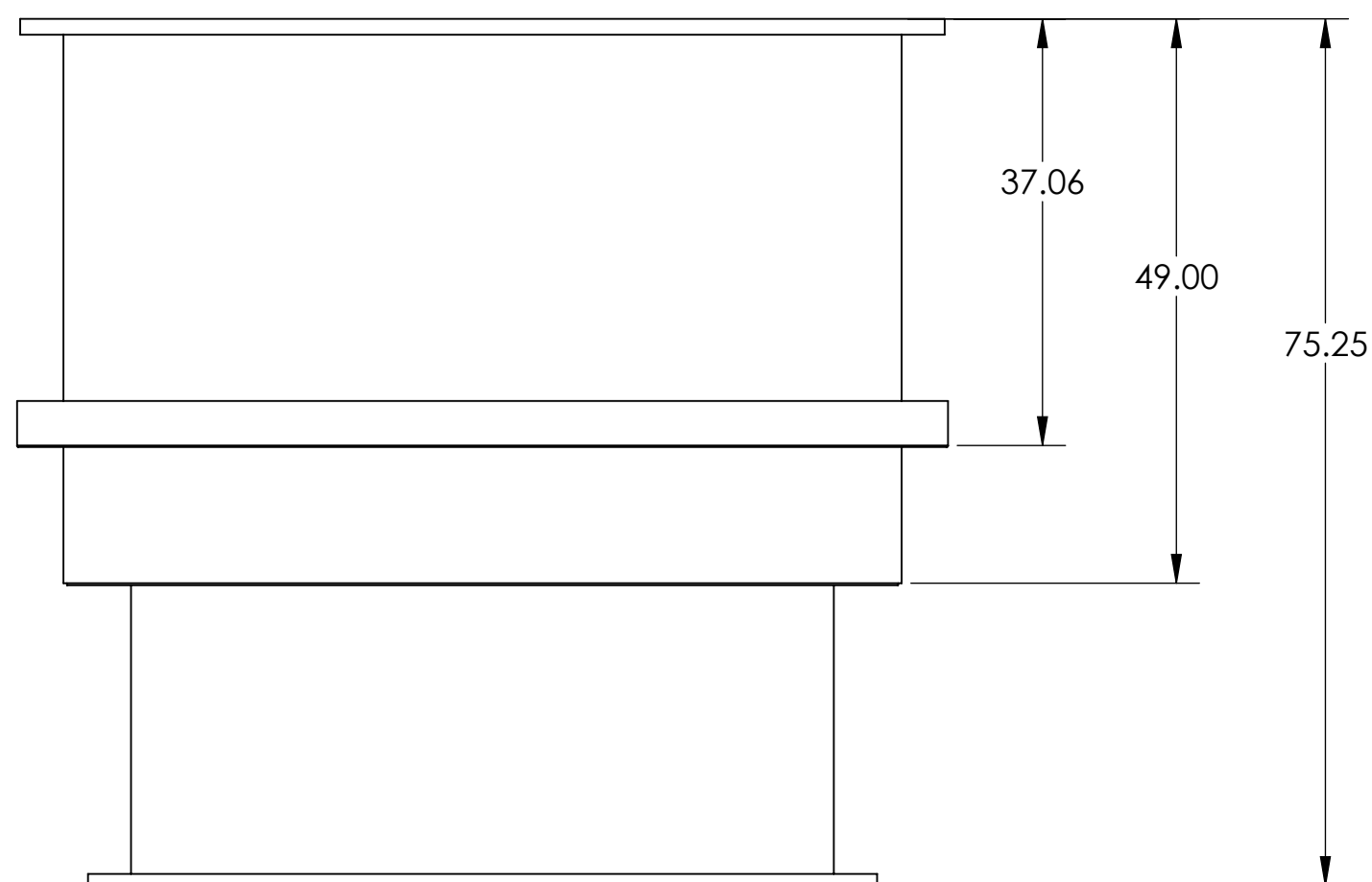


NOTES CONTINUED:
 ⑤ SCRIBE, ENGRAVE, OR MECHANICALLY STAMP (NO INKS OR DYES) DRAWING PART NUMBER AND REVISION ON NOTED SURFACE FOLLOWED ON THE NEXT LINE BY A THREE DIGIT SERIAL NUMBER. SERIAL NUMBERS START AT 001 FOR THE FIRST ARTICLE AND PROCEED CONSECUTIVELY. USE .07" HIGH CHARACTERS. EXAMPLE: DXXXXXX-VY, S/N 001. A VIBRATORY TOOL MAY BE USED.

REV.	DATE	DCN #	DRAWING TREE #
-	-	-	-
-	-	-	-
-	-	-	-

Item #	Part #	Description	Material	Req	Spare	Total
1	D0900953	Grooved Flange, 72.25ID, D961130-04, PSI V049-4-20 rev 2	AISI 304	1		1
2	D0900970	Cylindrical Shell 72.25ID	AISI 304	1		1
3	D0900967	Ring, Angle, 4 x 4 x .25, LIGO VE, PSI V049M814	AISI 304	1		1
4	D0900971	Cylindrical Shell, 60.50ID	AISI 304	1		1
5	D0900961	Flange, Flat Faced 60.50ID x 68.50 OD, LIGO VE D961128-01, PSI V049-4-097 rev 1	AISI 304	1		1



NOTES AND TOLERANCES: (UNLESS OTHERWISE SPECIFIED)

1. REMOVE ALL SHARP EDGES, R.02 MIN.
2. DO NOT SCALE FROM DRAWING.
3. DESIGN AND FABRICATE THIS COMPONENT PER LIGO SPECIFICATION E0900411-V1

MATERIAL N/A FINISH N/A μinch

LIGO CALIFORNIA INSTITUTE OF TECHNOLOGY
 MASSACHUSETTS INSTITUTE OF TECHNOLOGY

SYSTEM ADVANCED LIGO SUB-SYSTEM FMP

NEXT ASSY

PART NAME Adapter A-18, 60 1/2" I.D. x 72 1/4" I.D., LIGO VE

DESIGNER	Dennis Coyne	12 May 2009	SIZE	DWG. NO.	REV.
DRAFTER			c	D0900948	
CHECKER					
APPROVAL			SCALE: 1:16	PROJECTION:	SHEET 1 OF 1