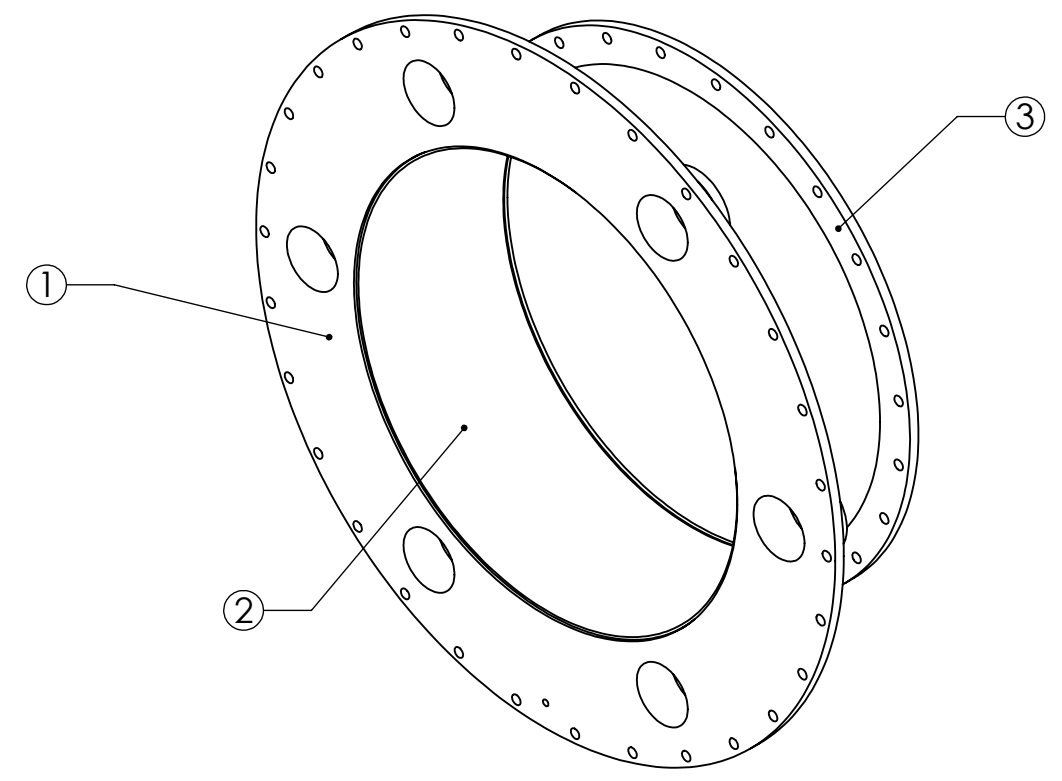
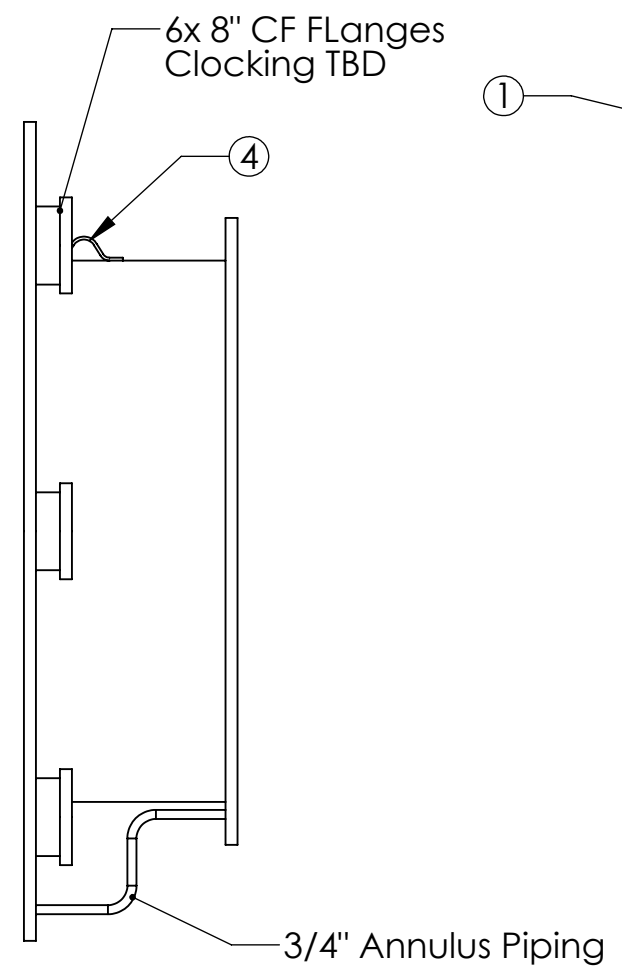
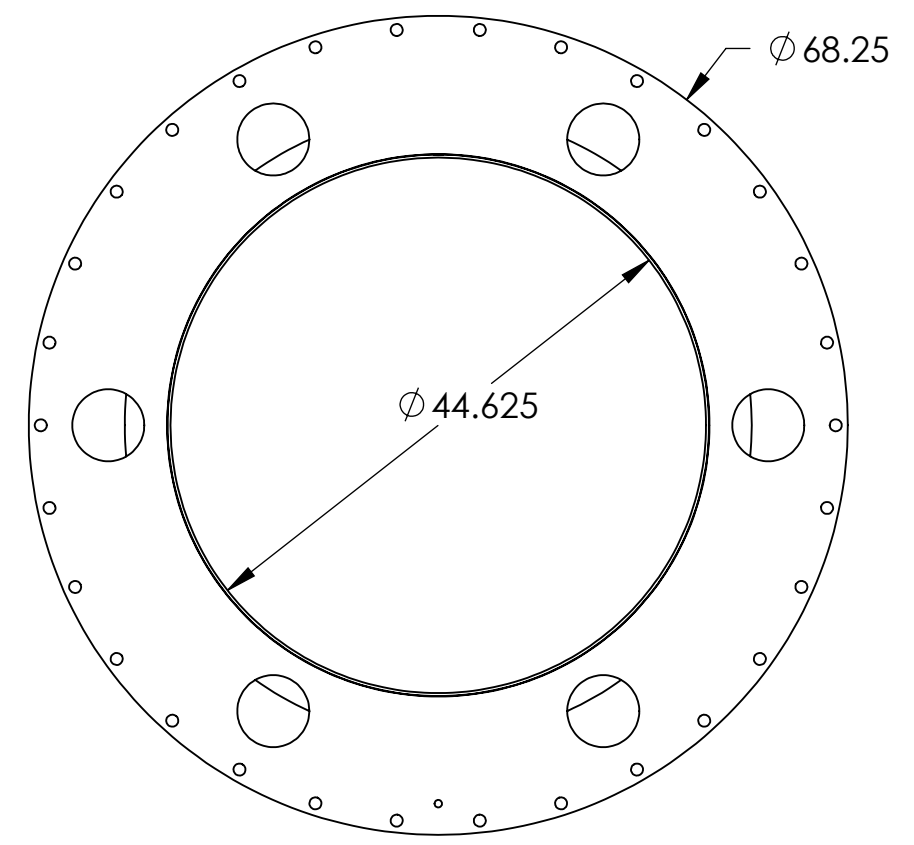
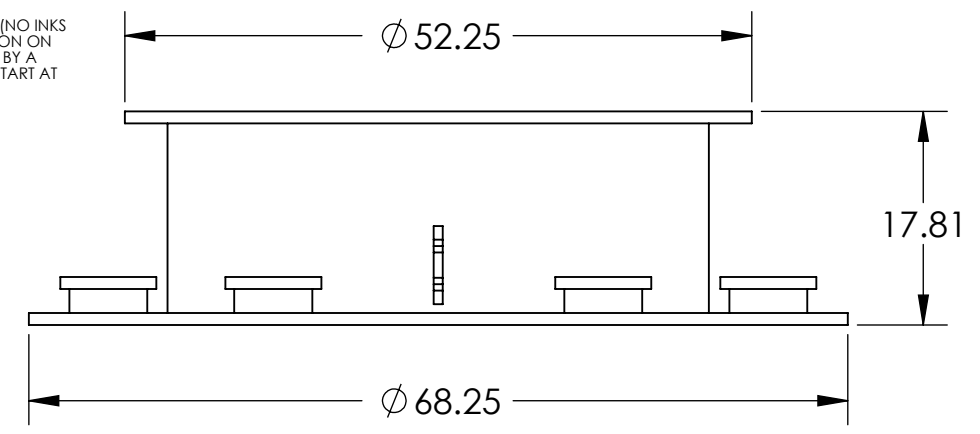


**NOTES CONTINUED:**  
 ⑤ SCRIBE, ENGRAVE, OR MECHANICALLY STAMP (NO INKS OR DYES) DRAWING PART NUMBER AND REVISION ON NOTED SURFACE FOLLOWED ON THE NEXT LINE BY A THREE DIGIT SERIAL NUMBER. SERIAL NUMBERS START AT 001 FOR THE FIRST ARTICLE AND PROCEED CONSECUTIVELY. USE .07" HIGH CHARACTERS. EXAMPLE: DXXXXXX-VY, S/N 001. A VIBRATORY TOOL MAY BE USED.

REV.	DATE	DCN #	DRAWING TREE #
-	-	-	-
-	-	-	-
-	-	-	-



Item #	Part #	Description	Material	Req	Spare	Total
1	D0900961	Flange, Flat Faced, 45.19ID x 68.25OD D961129-01, PSI 049-4-58	AISI 304	1		1
2	D0900962	Cylindrical Shell fo Adapter A-16, 44.625ID, LGO VE	AISI 304	1		1
3	D0900963	Flat Faced Flange, 44.625ID, LIGO VE D961124-01, PSI V049-4-042	AISI 304	1		1
4	D0900964	Lifting Lug, D970446-00, PSI V049-4-159	AISI 304	1		1

**NOTES AND TOLERANCES: (UNLESS OTHERWISE SPECIFIED)**  
 DIMENSIONS ARE IN  
 TOLERANCES:  
 .XX ±  
 .XXX ±  
 ANGULAR ± °  
 MATERIAL N/A  
 FINISH N/A μinch

**LIGO** CALIFORNIA INSTITUTE OF TECHNOLOGY  
 MASSACHUSETTS INSTITUTE OF TECHNOLOGY  
 PART NAME Adapter A-16, 44 1/4" I.D. x 60 1/2" I.D., LIGO VE  
 SYSTEM ADVANCED LIGO SUB-SYSTEM FMP  
 DESIGNER Dennis Coyne 12 May 2009  
 DRAFTER  
 CHECKER  
 APPROVAL  
 SIZE DWG. NO. B D0900946-V3  
 REV.  
 SCALE: 1:16 PROJECTION: SHEET 1 OF 1

D0900946\_rev, PART PDM REV: X-005, DRAWING PDM REV: