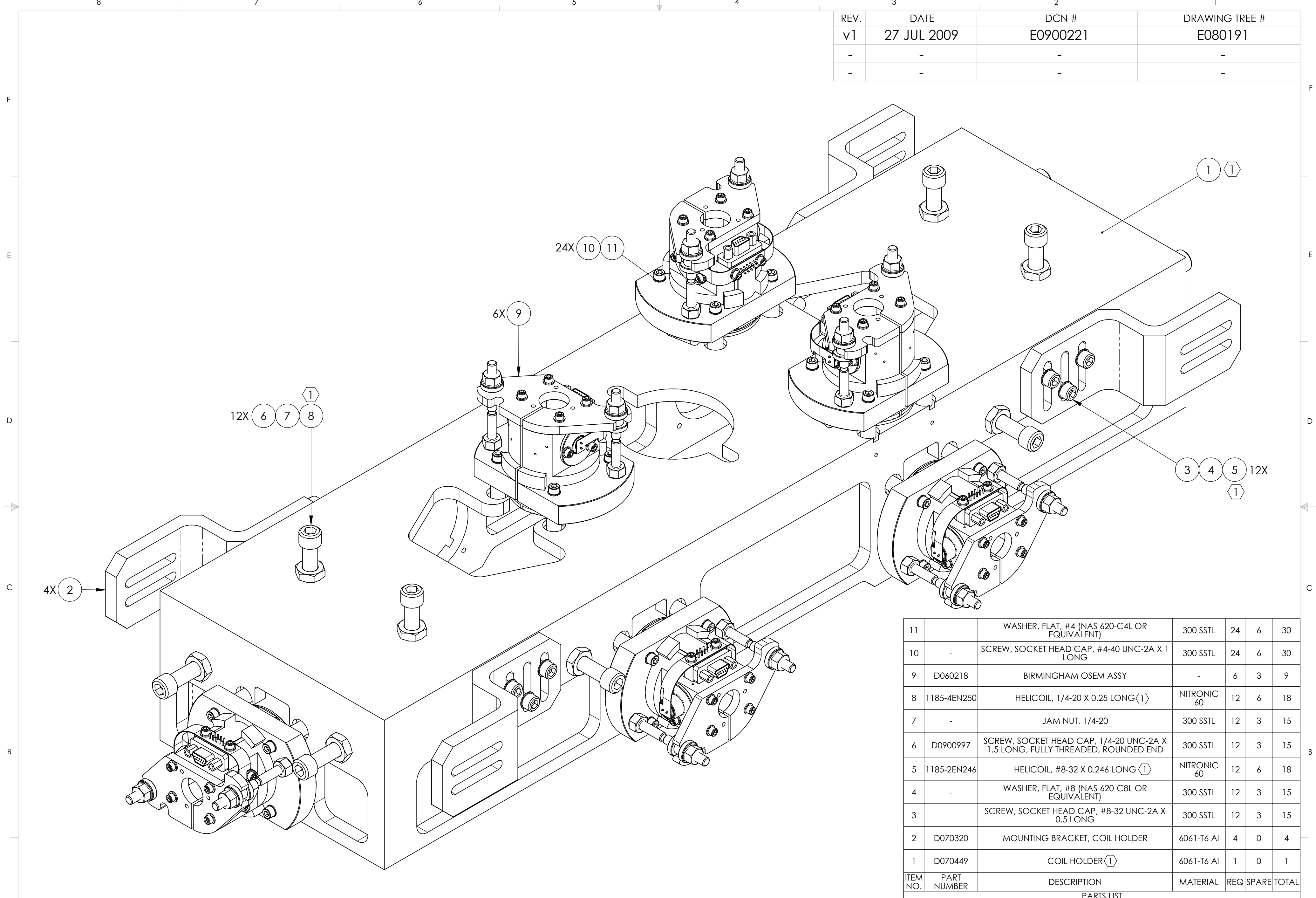


REV.	DATE	DCN #	DRAWING TREE #
v1	27 JUL 2009	E0900221	E080191
-	-	-	-
-	-	-	-



ITEM NO.	PART NUMBER	DESCRIPTION	MATERIAL	REQ	SPARE	TOTAL
11	-	WASHER, FLAT, #4 (NAS 620-C4L OR EQUIVALENT)	300 SSSL	24	6	30
10	-	SCREW, SOCKET HEAD CAP, #4-40 UNC-2A X 1 LONG	300 SSSL	24	6	30
9	D060218	BIRMINGHAM OSEM ASSY	-	6	3	9
8	1185-4EN250	HELICOIL, 1/4-20 X 0.25 LONG (1)	NITRONIC 60	12	6	18
7	-	JAM NUT, 1/4-20	300 SSSL	12	3	15
6	D0900997	SCREW, SOCKET HEAD CAP, 1/4-20 UNC-2A X 1.5 LONG, FULLY THREADED, ROUNDED END	300 SSSL	12	3	15
5	1185-2EN246	HELICOIL, #8-32 X 0.246 LONG (1)	NITRONIC 60	12	6	18
4	-	WASHER, FLAT, #8 (NAS 620-C8L OR EQUIVALENT)	300 SSSL	12	3	15
3	-	SCREW, SOCKET HEAD CAP, #8-32 UNC-2A X 0.5 LONG	300 SSSL	12	3	15
2	D070320	MOUNTING BRACKET, COIL HOLDER	6061-T6 Al	4	0	4
1	D070449	COIL HOLDER (1)	6061-T6 Al	1	0	1
PARTS LIST						

NOTES AND TOLERANCES: (UNLESS OTHERWISE SPECIFIED)

(1) HELICOILS TO BE INSTALLED INTO ITEM NO. 1 BY LIGO AFTER ALL PARTS ARE CLEANED AND BAKED.  
 2. PARTS TO BE ASSEMBLED ACCORDING TO E080208 HLTS ASSEMBLY SPECIFICATION.

MATERIAL: N/A  
 FINISH: N/A μinch

**LIGO** CALIFORNIA INSTITUTE OF TECHNOLOGY  
 MASSACHUSETTS INSTITUTE OF TECHNOLOGY

SYSTEM: ADVANCED LIGO      SUB-SYSTEM: SUS

NEXT ASSY: HLTS OVERALL ASSY

PART NAME: **COIL HOLDER ASSY**

DESIGNER	D. BRIDGES	27 JUL 2009	SIZE	DWG. NO.	REV.
DRAFTER	D. BRIDGES	28 JUL 2009	C	<b>D080677</b>	v1
CHECKER	M. MEYER	28 JUL 2009			
APPROVAL			SCALE: 1:1	PROJECTION:	SHEET 1 OF 1