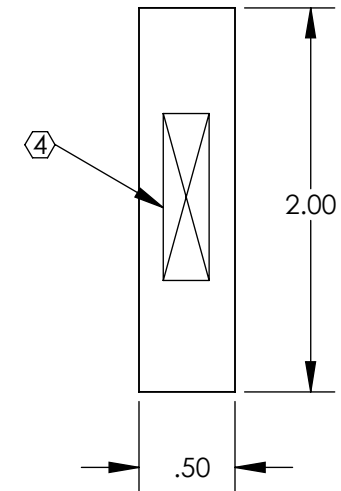
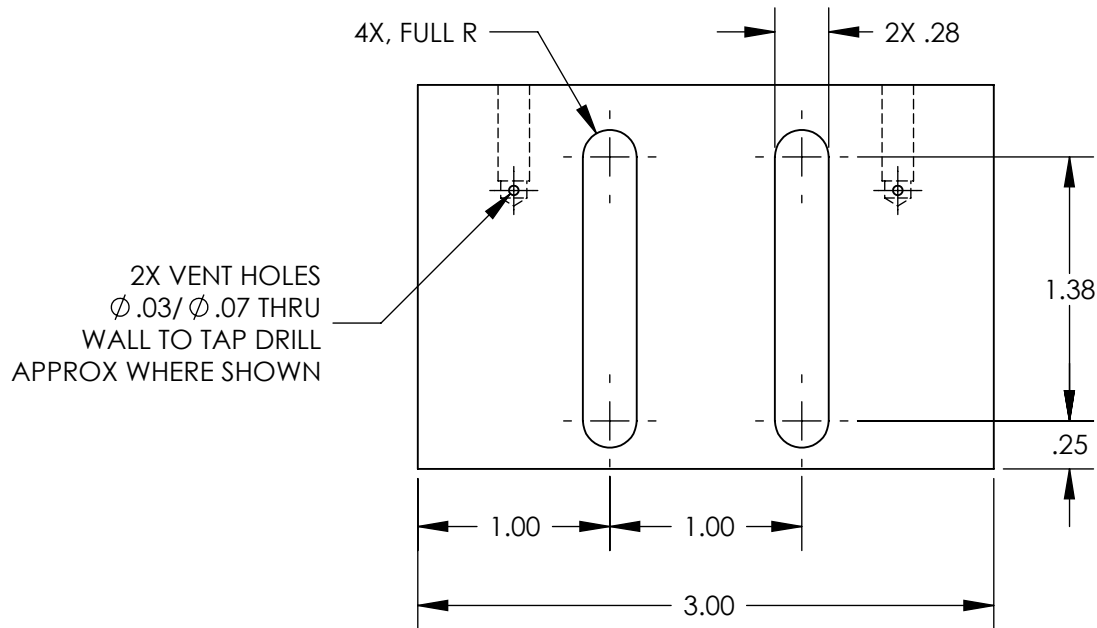
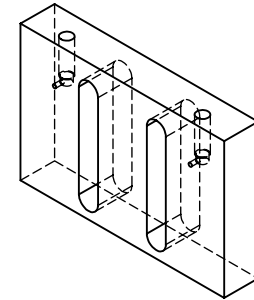
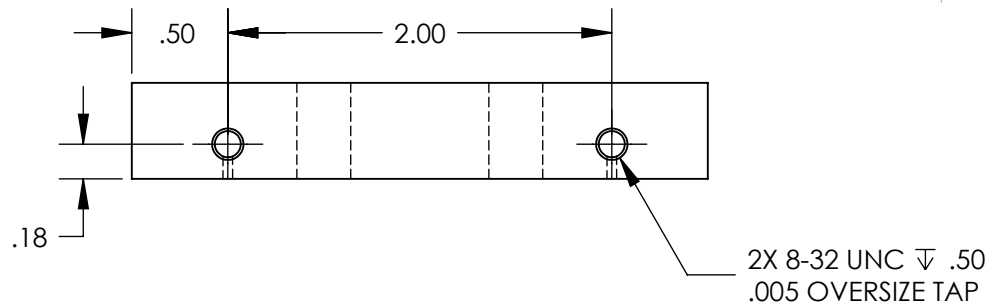


REV.	DATE	DCN #	DRAWING TREE #
A	28 MAR 2008	E080113-00	



NOTES: (UNLESS OTHERWISE SPECIFIED)

1. REMOVE ALL SHARP EDGES, R.02 MIN.
2. DO NOT SCALE FROM DRAWING.
3. ALL MACHINING FLUIDS SHALL BE WATER SOLUBLE AND FREE OF SULFUR, CHLORINE AND SILICONE, SUCH AS CINCINNATI MILACRON'S CIMTECH 410 (STAINLESS STEEL)
- ④ SCRIBE, ENGRAVE OR STAMP DRAWING PART NUMBER ON NOTED SURFACE OF PART AND THEN A THREE DIGIT SERIAL NUMBER. SERIAL NUMBERS START AT 001 FOR THE FIRST PART AND PROCEED CONSECUTIVELY. USE .07" HIGH CHARACTERS. EXAMPLE: D020188-001. A VIBRATORY TOOL MAY BE USED.

DIMENSIONS ARE IN INCHES

TOLERANCES:
 .XX \pm 0.01
 .XXX \pm 0.005

ANGULAR \pm 0.5 °

MATERIAL
 6061-T6 Alum

FINISH
 32

	NAME	DATE
DRAWN	M. Meyer	24 JAN 2008
CHECKED	J. ROMIE	25 JAN 2008
APPROVED		



SYSTEM
 ADVANCED LIGO

SUB-SYSTEM
 SUS

NEXT ASSY
 D080163

PART NAME
 OMC CROSSBAR SIDE PLATE

SIZE DWG. NO. **D080165** **REV.** **A**

SCALE: 1:1 **PROJECTION:** **SHEET 1 OF 1**