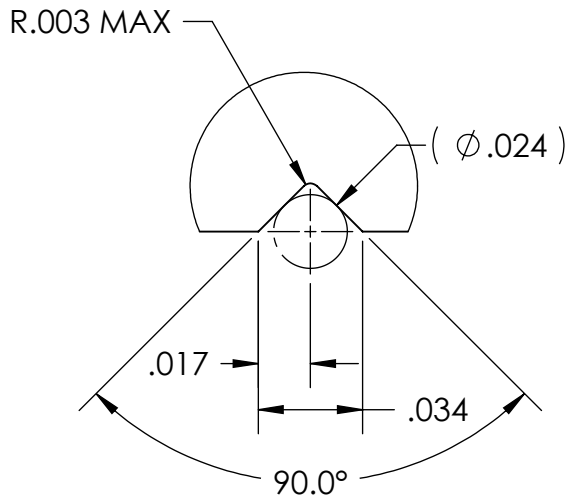
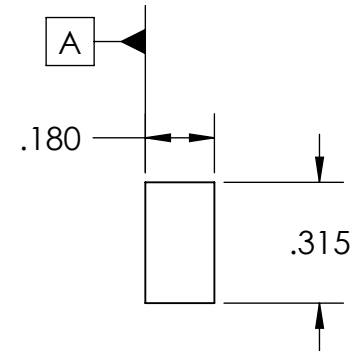
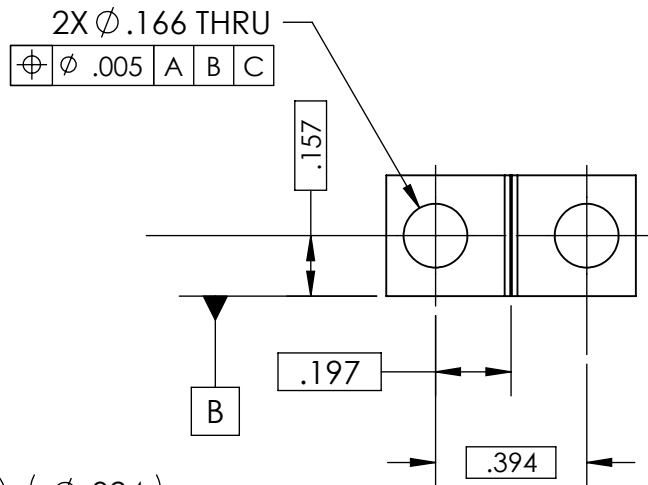
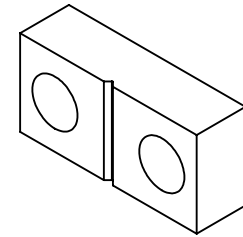
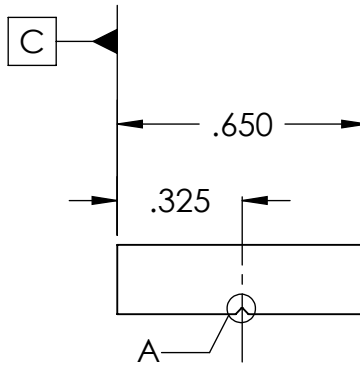


REV.	DATE	DCN #	DRAWING TREE #
A	01 AUG 2008	E080418-00	E080191-00



DETAIL A
SCALE 16 : 1

NOTES: (UNLESS OTHERWISE SPECIFIED)

1. REMOVE ALL SHARP EDGES, R.02 MIN.
2. DO NOT SCALE FROM DRAWING.
3. ALL MACHINING FLUIDS SHALL BE WATER SOLUBLE AND FREE OF SULFUR, CHLORINE AND SILICONE, SUCH AS CINCINNATI MILACRON'S CIMTECH 410 (STAINLESS STEEL)
4. BAG ALL ITEMS INDIVIDUALLY AND TAG EACH BAG WITH THE DRAWING NUMBER, REVISION, AND QUANTITY E.G.: D070341-A, QTY: TBD
5. 'L' AND 'LN' VARIANTS OF 304 AND 316 TYPE STAINLESS STEEL ARE ACCEPTABLE
6. 303 TYPE STAINLESS STEEL IS NOT ACCEPTABLE

DIMENSIONS ARE IN INCHES

TOLERANCES:
 .XX ± 0.01
 .XXX ± 0.005

ANGULAR ± 0.5 °

MATERIAL
304, 316 OR 302 SSTL

FINISH
32 μ inch

	NAME	DATE
DRAWN	B. KIRSNER	21 DEC 2007
CHECKED	M. MEYER	08 MAY 2008
APPROVED		



SYSTEM **ADVANCED LIGO**

SUB-SYSTEM **SUS**

NEXT ASSY **UPPER WIRE ASSEMBLY**

PART NAME
UPPER CLAMP, UPPER WIRE, OUTSIDE

SIZE DWG. NO.
A D070341

REV.
A

SCALE: 2:1 PROJECTION: SHEET 1 OF 1