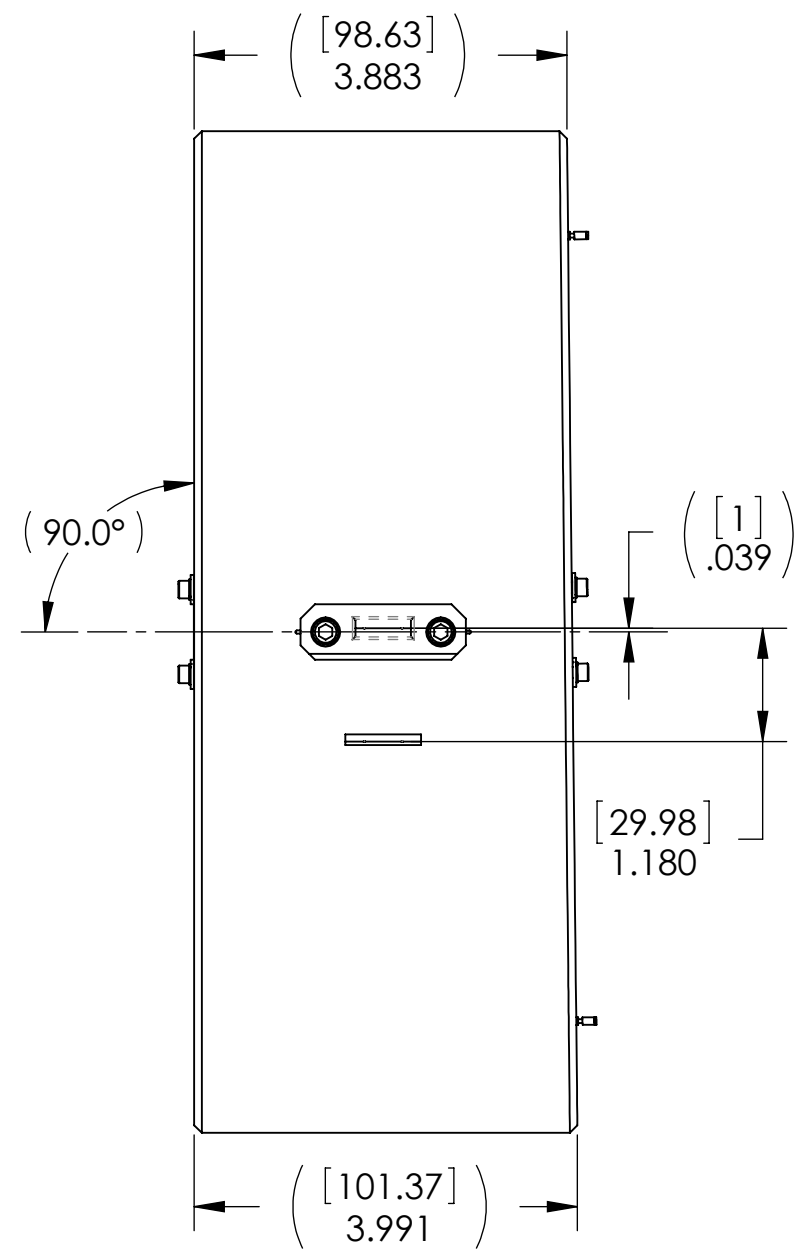


D070337_Advanced_LIGO_SUS_HLTS_Test_Mass_Assembly, PART PDM REV: V7-001, DRAWING PDM REV: V7-001

REV.	DATE	DCN #	DRAWING TREE #
v1	24 JUN 2009	E0900176	E080191
v2	05 AUG 2009	E0900232	E080191
v3	03 SEP 2009	E0900277	E080191
v4	02 DEC 2009	E0900446	E080191
v5	18 MAY 2010	E1000166	E080191
v6	09 DEC 2010	E1000849	E080191
v7	12 FEB 2012	E1200212	E080191
v8	09 OCT 2012	E1200887	E080191



11	D0901286	SECONDARY METAL PRISM BREAKOFF, HLTS	316 SSTL	2	1	3
10	-	SCREW, SOCKET HEAD CAP, #4-40 UNC-2A X 0.5 LONG, VENTED	300 SSTL	8	2	10
9	-	WASHER, FLAT, VENTED, #4 (U-C COMPONENTS P/N WFV-04 OR EQUIVALENT)	300 SSTL	8	2	10
8	-	METALLIZED MIRROR, ROUND (OPTOSIGMA P/N 033-0280 OR EQUIVALENT)	BK7 GLASS	2	0	2
7	D1100197	SPACER, BOTTOM MASS OPTIC, HLTS/HSTS	6061-T6 Al	2	0	2
6	-	SCREW, SOCKET HEAD CAP, #8-32 UNC-2A X 0.75 LONG	300 SSTL	4	1	5
5	-	WASHER, FLAT, VENTED, #8 (U-C COMPONENTS P/N WFV-08 OR EQUIVALENT)	300 SSTL	12	3	15
4	D080124	PRISM BREAKOFF, LOWER WIRE	304, 316 OR 302 SSTL	2	1	3
3	-	UHV-COMPATIBLE ADHESIVE (MASTERBOND EP30-2 OR EQUIVALENT)	-	A/R	0	0
2	D0902432	MAGNET/STANDOFF ASSEMBLY	N/A	4	1	5
1	D070338	METAL BOTTOM MASS	6061-T6 Al	1	0	1
ITEM NO.	PART NUMBER	DESCRIPTION	MATERIAL	REQ	SPARE	TOTAL

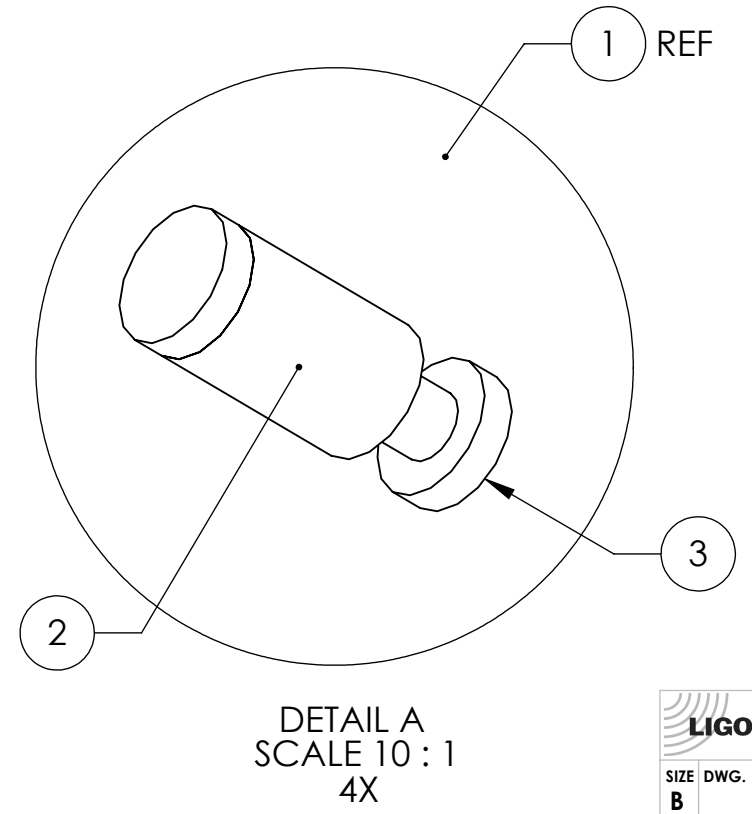
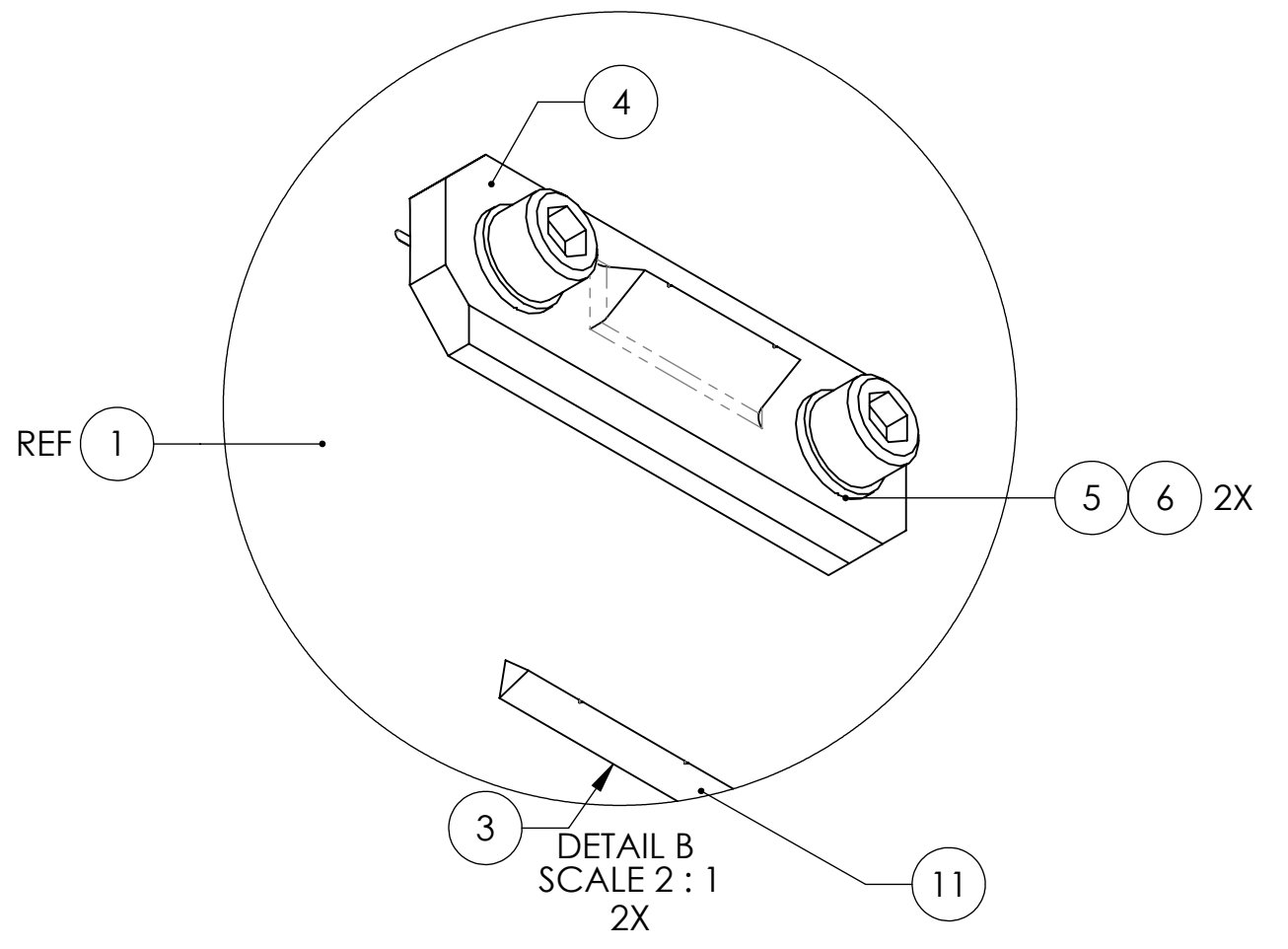
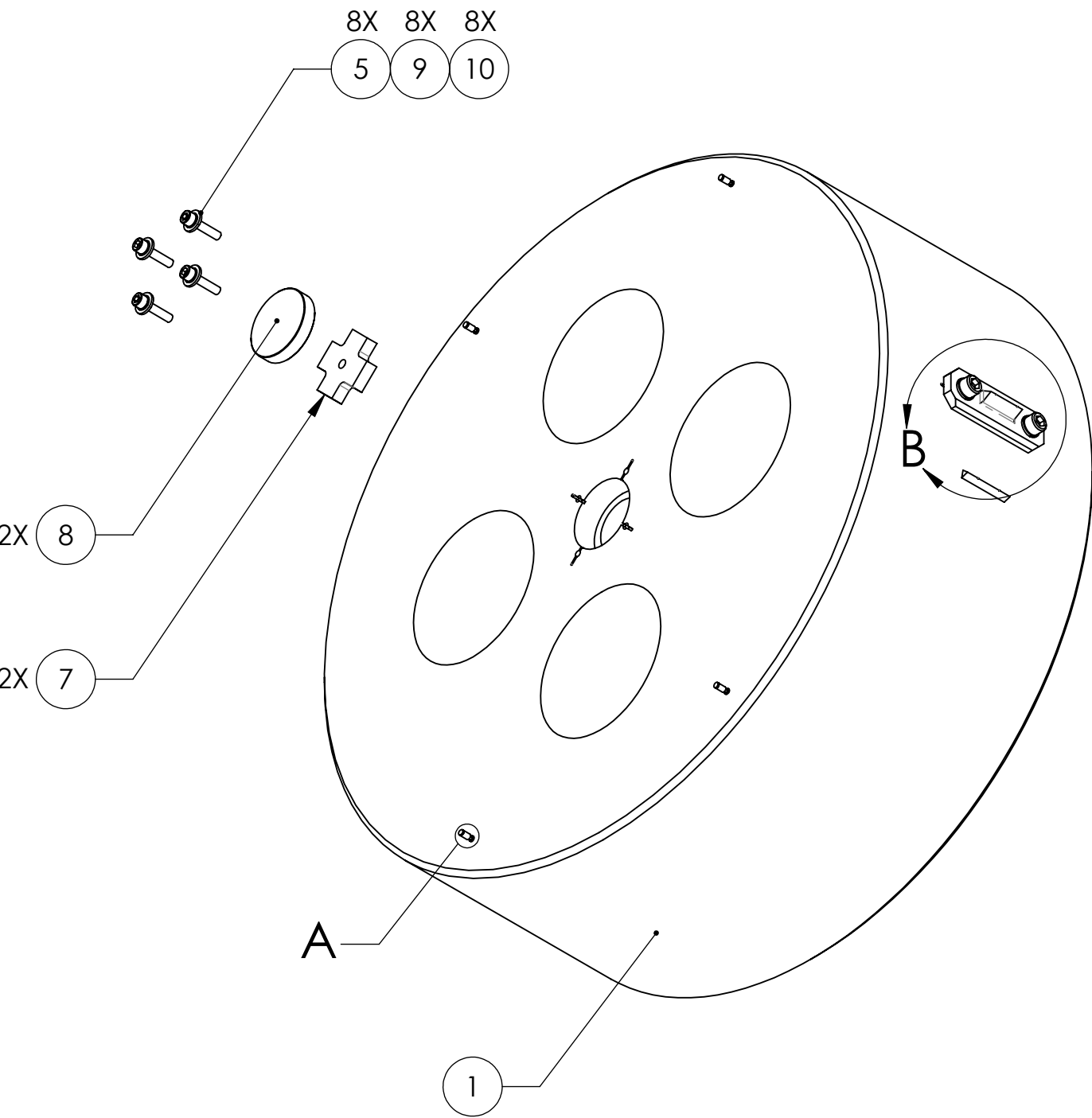
PARTS LIST

<p>NOTES AND TOLERANCES: (UNLESS OTHERWISE SPECIFIED)</p> <p>DIMENSIONS ARE IN INCHES [MM]</p> <p>TOLERANCES: .XX ± .01 .XXX ± .005 ANGULAR ± 0.5°</p>		<p>1. PARTS TO BE ASSEMBLED ACCORDING TO E080208 HLTS ASSEMBLY SPECIFICATION, USING D0901460 HLTS BOTTOM MASS MAGNET PLACEMENT FIXTURE AND D1101789 HLTS METAL BOTTOM MASS SECONDARY PRISM PLACEMENT FIXTURE.</p>		<p>LIGO CALIFORNIA INSTITUTE OF TECHNOLOGY MASSACHUSETTS INSTITUTE OF TECHNOLOGY</p>		<p>PART NAME BOTTOM MASS ASSY</p>	
<p>MATERIAL N/A</p>		<p>FINISH N/A μinch</p>		<p>SYSTEM ADVANCED LIGO</p>		<p>SUB-SYSTEM SUS</p>	
<p>NEXT ASSY HLTS SUSPENSION ASSY</p>		<p>DESIGNER D. BRIDGES</p>		<p>DATE 09 OCT 2012</p>		<p>SIZE DWG. NO. B D070337</p>	
<p>APPROVAL</p>		<p>DRAFTER D. BRIDGES</p>		<p>DATE 09 OCT 2012</p>		<p>REV. v8</p>	
<p>CHECKER B. MOORE</p>		<p>DATE 10 OCT 2012</p>		<p>SCALE: 1:2</p>		<p>PROJECTION: </p>	
<p>SHEET 1 OF 2</p>							

D070337_Advanced_LIGO_SUS_SUS_HLTS_Test_Mass_Assembly, PART PDM REV: V7-001, DRAWING PDM REV: V7-001

8 7 6 5 4 3 2 1

D
C
B
A



LIGO CALIFORNIA INSTITUTE OF TECHNOLOGY
MASSACHUSETTS INSTITUTE OF TECHNOLOGY

SIZE	DWG. NO.	REV.
B	D070337	v8
SCALE: 1:2	PROJECTION:	SHEET 2 OF 2

8 7 6 5 4 3 2 1