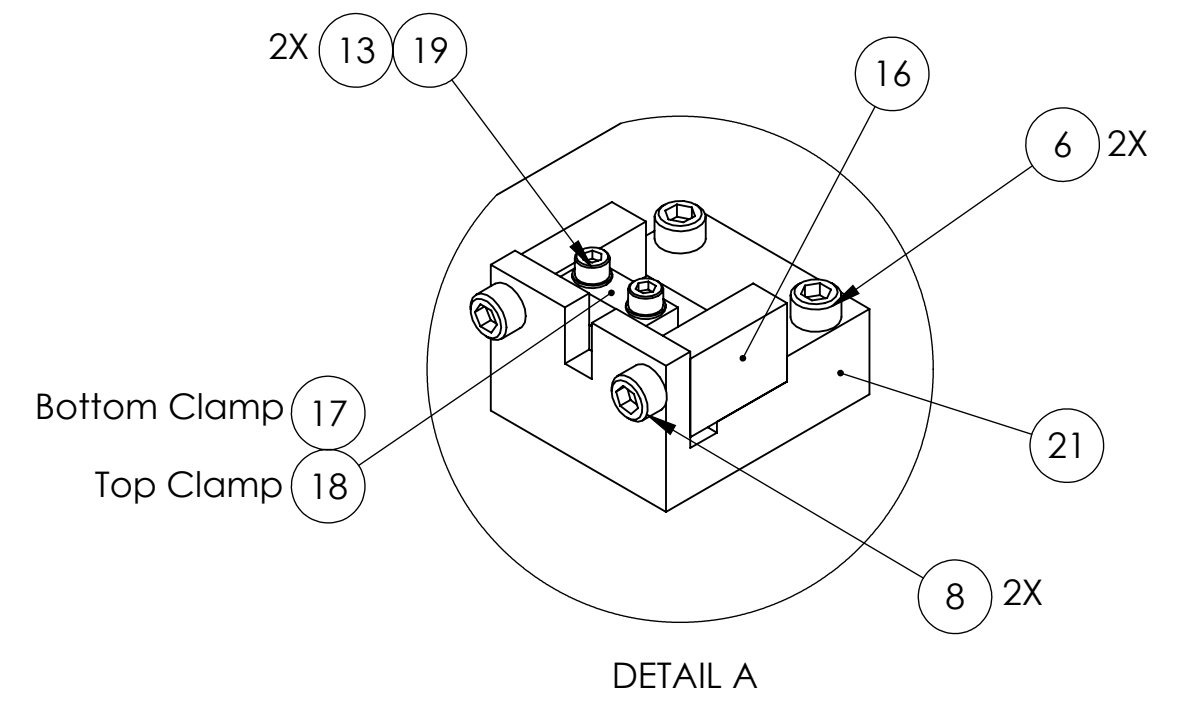
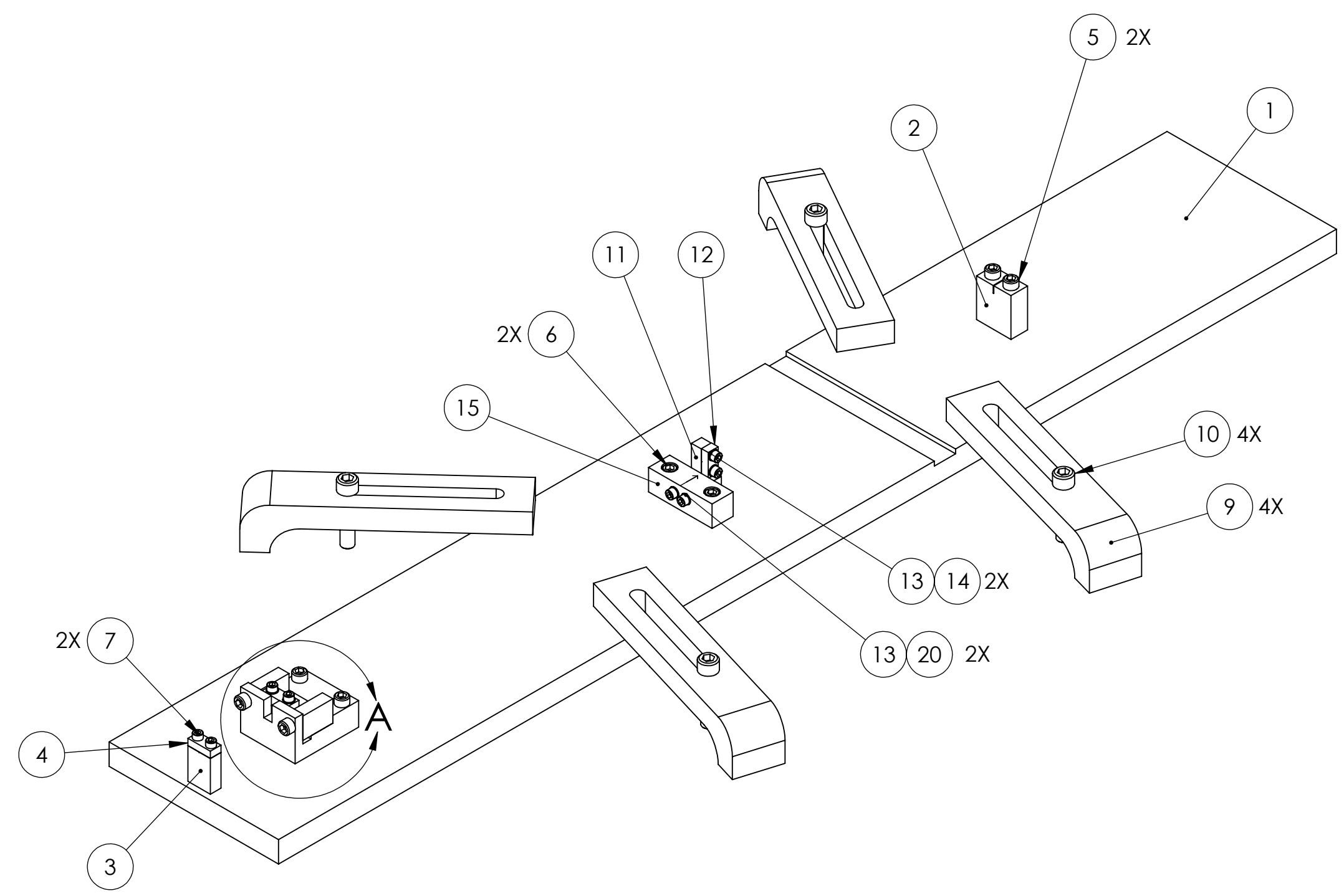


REV.	DATE	DCN #	DRAWING TREE #
A	28 MAR 2008	E080113-00	
B	02 APR 2008	E080129-00	
v1	1 MAY 2009	E0900122	E0900052



ITEM NO.	REQ	SPARE	TOTAL	PART NUMBER	DESCRIPTION	MATERIAL
21	1	0	1	D070038	BAR JIG STEP PLATE	6061-T6-AI
20	2	0	2	-	SCREW, SOCKET HEAD CAP, #4-40 X 0.75 LG	300 SSSL, Ag-PLTD
19	2	0	2	-	SCREW, SOCKET HEAD CAP, #4-40 UNC-2A X 0.5 LONG	Ag-PLATED 300 SSSL
18	REF	-	REF	D020139	UPPER MASS WIRE CLAMP PLATE	300 SERIES STAINLESS
17	REF	-	REF	D020309	UPPER MASS WIRE CLAMP PLATE (WITH GROOVE)	300 SERIES STAINLESS
16	REF	-	REF	D070030	UPPER MASS C CLAMP	300 SSSL
15	1	0	1	D070023	UPPER BLADE WIRE CLAMP ATTACHMENT	6061-T6-AI
14	2	1	3	-	SCREW, SOCKET HEAD CAP, #4-40 X 0.3125 LG	300 SSSL, Ag-PLTD
13	6	2	8	NAS620-C4L	WASHER, FLAT, #4	300 SSSL
12	REF	-	REF	D030042	UPPER BLADE WIRE CLAMP PLATE	300 SSSL
11	REF	-	REF	D070022	TOP BLADE WIRE CLAMP	300 SSSL
10	4	1	5	-	SCREW, SOCKET HEAD CAP, 1/4-20 X 1.125 LG	300 SSSL
9	4	0	4	D980184	LOS CLAMP LONG	300 SSSL
8	2	0	2	-	SCREW, SOCKET HEAD CAP, #8-32 UNC-2A X 0.75 LONG	Ag-PLATED 300 SSSL
7	2	0	2	-	SCREW, SOCKET HEAD CAP, #4-40 X 1.25 LG	300 SSSL
6	4	1	5	-	SCREW, SOCKET HEAD CAP, #8-32 X 0.625 LG	300 SSSL
5	2	0	2	-	SCREW, SOCKET HEAD CAP, #8-32 X 1.125 LG	300 SSSL
4	1	0	1	D020380	WIRE START CLAMP UPPER	6061-T6-AI
3	1	0	1	D020540	WIRE START MATCHED HEIGHT (GROOVED CLAMP)	6061-T6-AI
2	1	0	1	D020440	UPPER WIRE HEIGHT BALANCE	6061-T6-AI
1	1	0	1	D080121	BAR JIG FOR UPPER WIRES	6061-T6-AI

NOTES: (UNLESS OTHERWISE SPECIFIED)

- DO NOT SCALE FROM DRAWING.
- REMOVE ALL SHARP EDGES, R.02 MAX.
- ALL MACHINING FLUIDS SHALL BE WATER SOLUBLE AND FREE OF SULFUR, CHLORINE AND SILICONE.

DIMENSIONS ARE IN INCHES
TOLERANCES:
.XX ± 0.01
.XXX ± 0.005
ANGULAR ± 0.5 °

CALIFORNIA INSTITUTE OF TECHNOLOGY
MASSACHUSETTS INSTITUTE OF TECHNOLOGY

SYSTEM: ADVANCED LIGO
SUB-SYSTEM: SUS
NEXT ASSY: OMC OVERALL ASSY
PART NAME: OMC UPPER WIRE JIG ASSEMBLY

DRAWN	M. MEYER	13 MAR 08
CHECKED	D. BRIDGES	24 MAR 2008
APPROVED		

SCALE: NPS PROJECTION: SHEET 1 OF 1