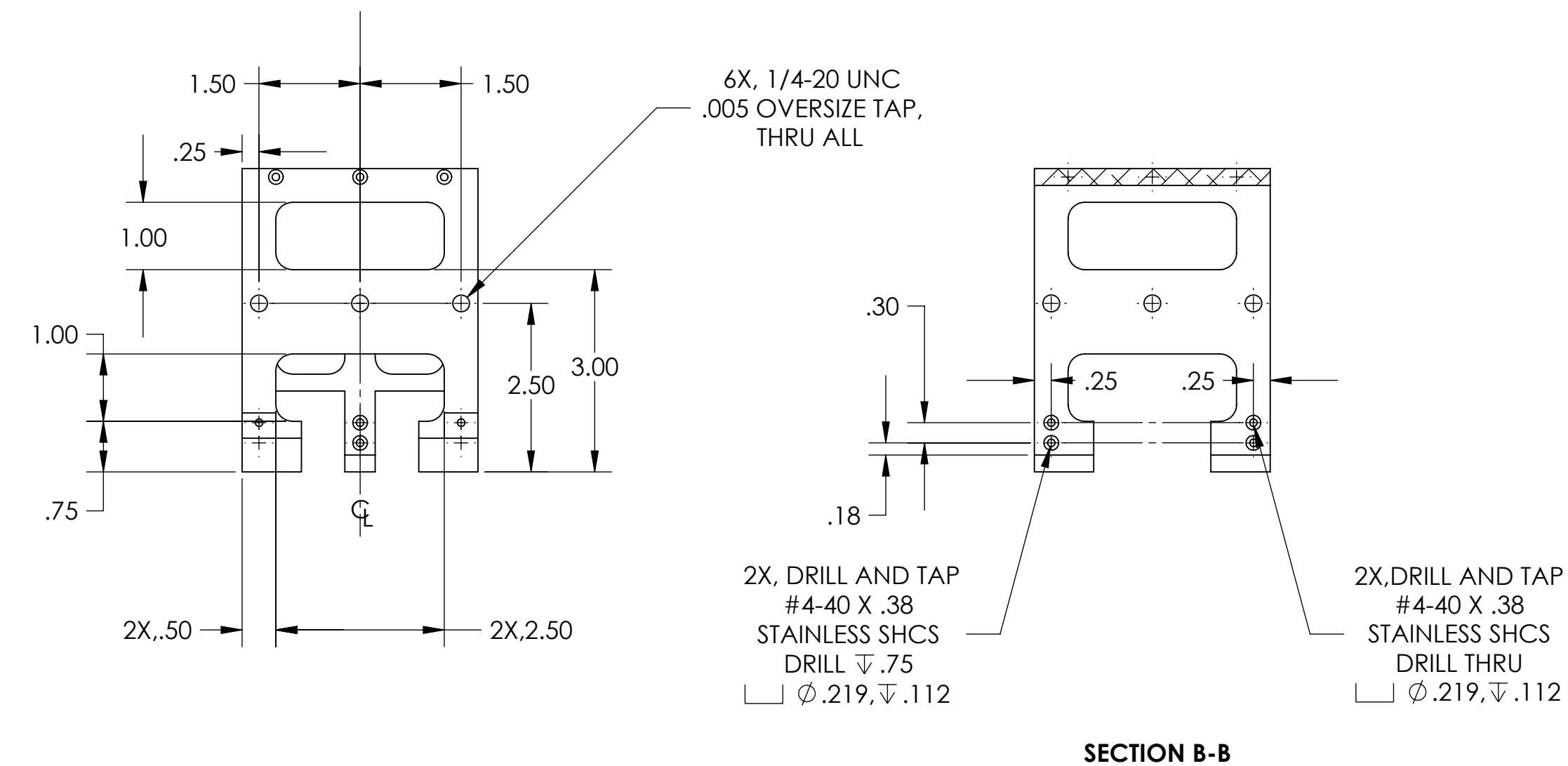
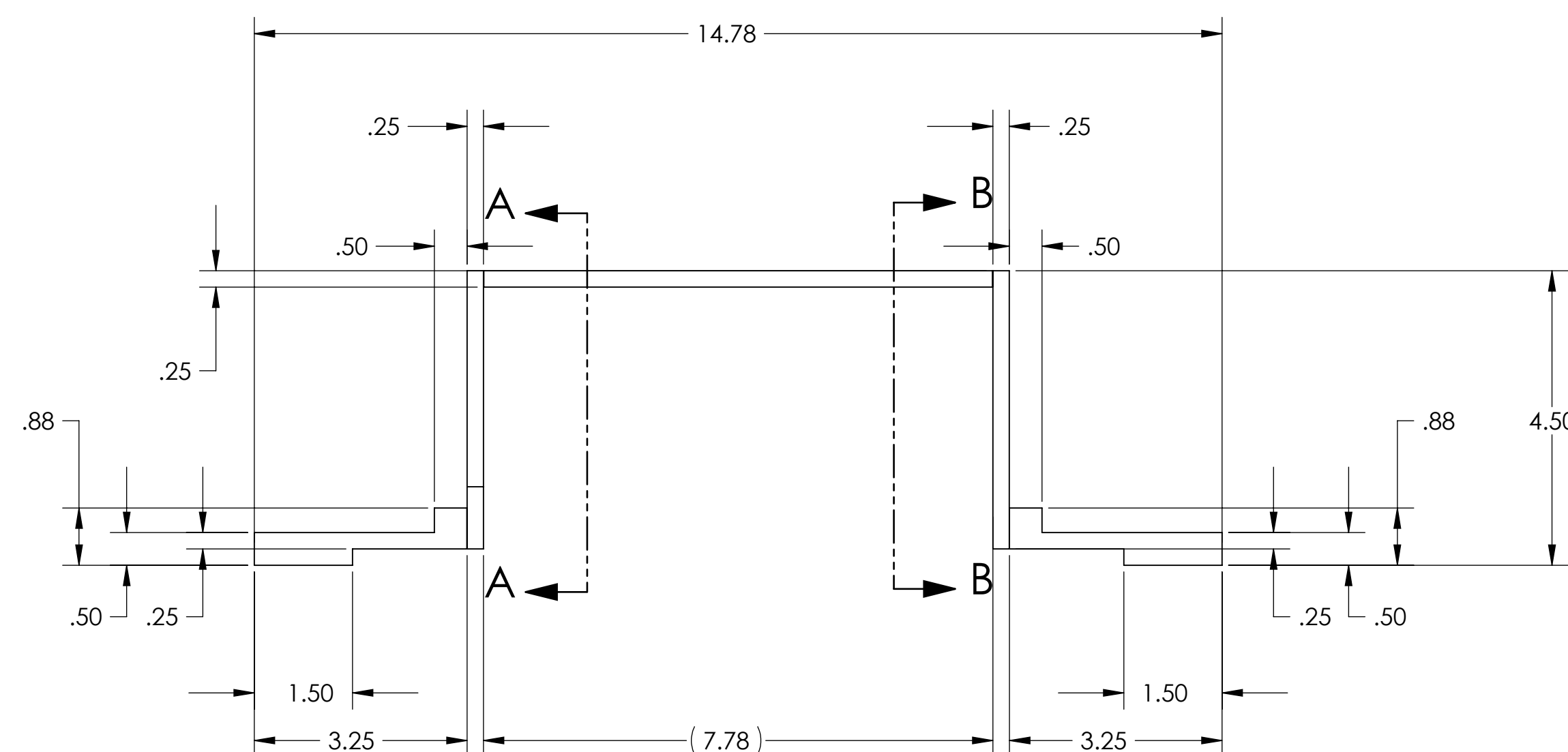
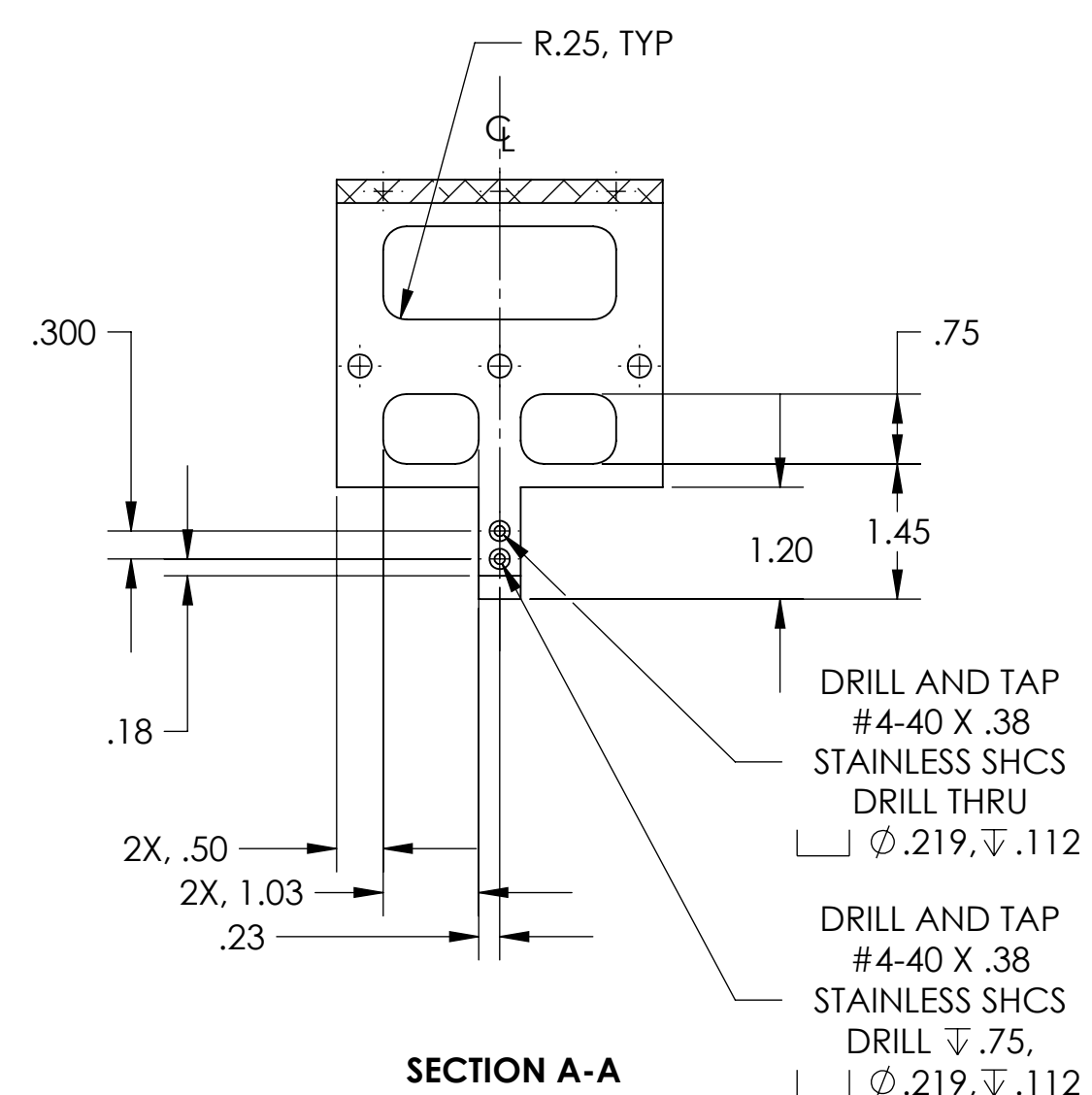
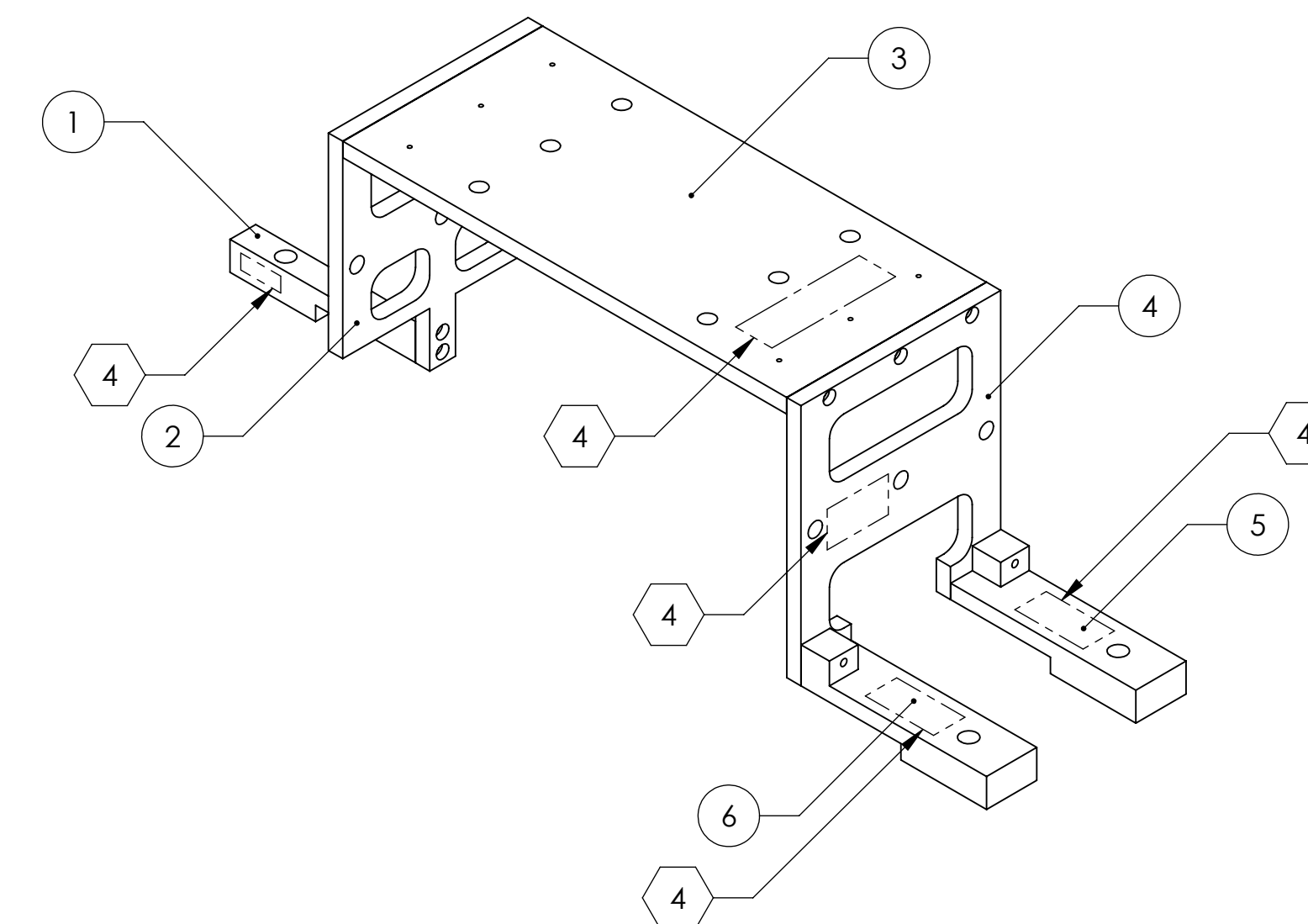
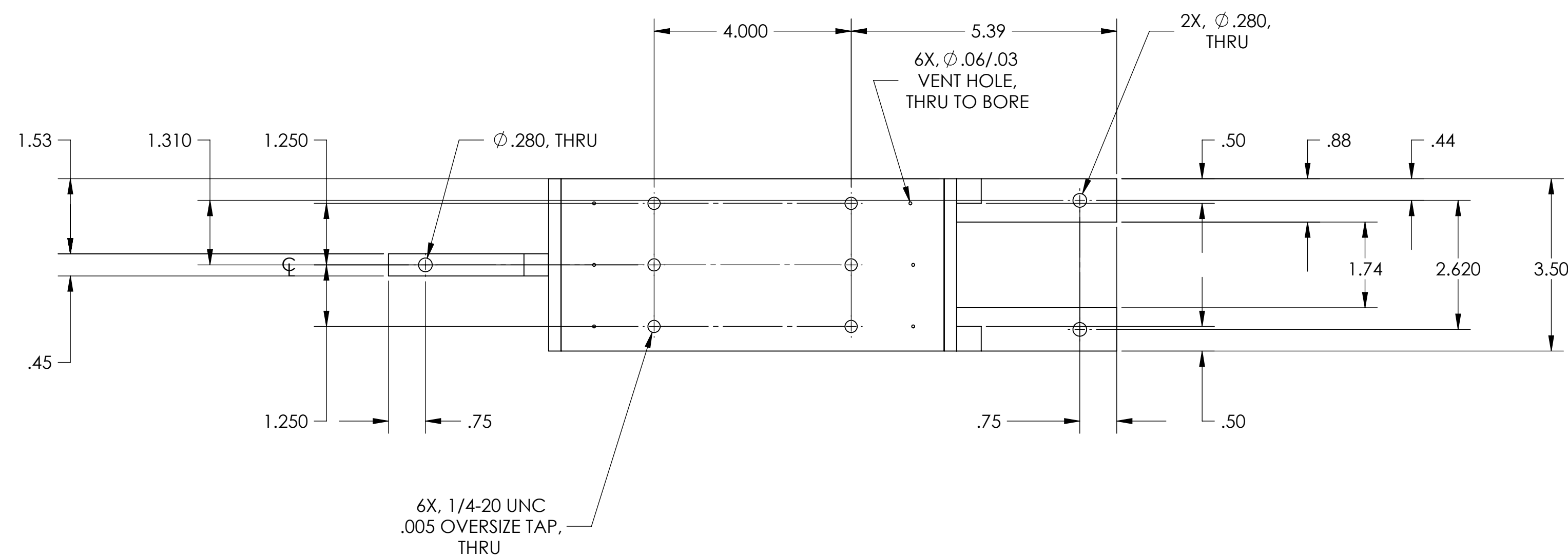


REV.	DATE	DCN #	DRAWING TREE #
A	28 MAR 2008	E080113-00	
v1	15 MAY 2009	E0900149	



ITEM NUMBER	QTY	DASH NUMBER
6	1	-06
5	1	-05
4	1	-04
3	1	-03
2	1	-02
1	1	-01

PARTS LIST		
NOTES: (UNLESS OTHERWISE SPECIFIED)		
1. DO NOT SCALE FROM DRAWING.		
2. REMOVE ALL SHARP EDGES, R.02 MAX.		
3. ALL MACHINING FLUIDS SHALL BE WATER SOLUBLE AND FREE OF SULFUR, CHLORINE AND SILICONE.		
4. SCREWS ENGRAVE OR MECHANICALLY STAMP (NO INKS OR DYES) DRAWING PART NUMBER, DASH NUMBER, AND REVISION ON NOTED SURFACES FOLLOWED ON THE HEADLINE BY A THREE DIGIT SERIAL NUMBER. SERIAL NUMBERS START AT 001 FOR THE FIRST ARTICLE AND PROCEED CONSECUTIVELY. USE 07" HIGH CHARACTERS. EXAMPLE: 00XXXXX-0X-vY, S/N 001. A VIBRATORY TOOL MAY BE USED.		
DIMENSIONS ARE IN INCHES	LIGO CALIFORNIA INSTITUTE OF TECHNOLOGY MASSACHUSETTS INSTITUTE OF TECHNOLOGY	
TOLERANCES:	SYSTEM ADVANCED LIGO	
XXX ± 0.01	SUB-SYSTEM SUS	
XXXX ± 0.005	NEXT ASSY OMC	
ANGULAR ± 0.5°	PART NAME EQ BRACKET TOP	
MATERIAL 6061-T6 Al	FINISH 63 μinch	
NAME J. ROMA	DATE FEB 2007	SCALE 1:2
CHECKED D. BRIGGS	DATE 27 MAR 2008	PROJECTION
APPROVED		