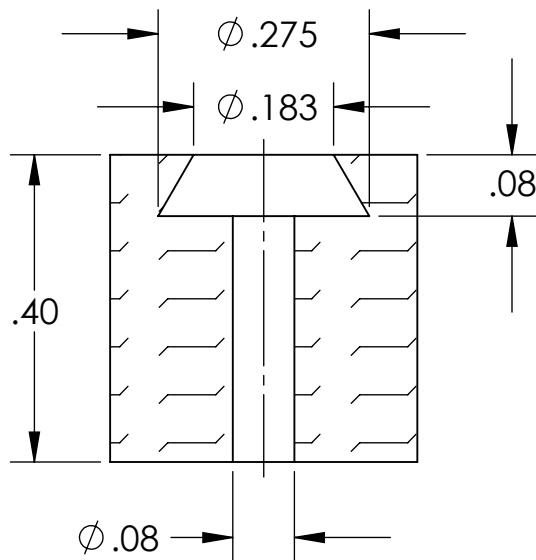
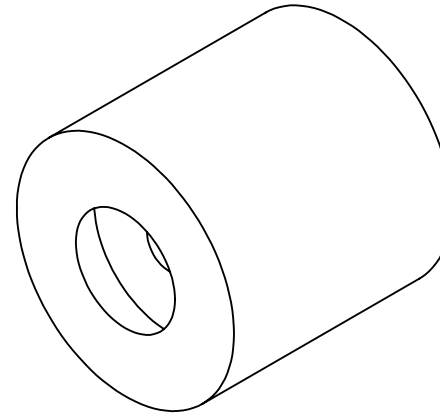
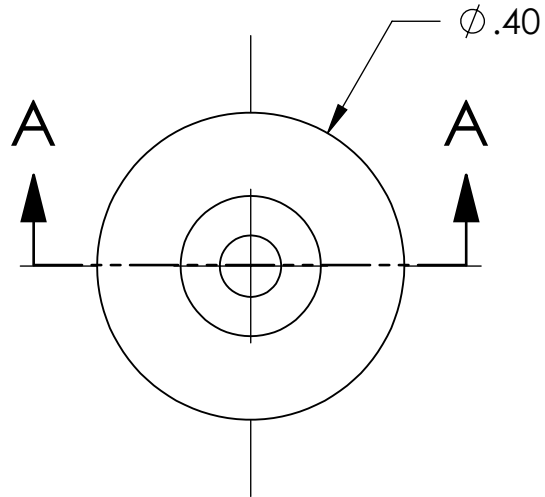


REV.	DATE	DCN #	DRAWING TREE #
A	-	-	-
v1	3 MAR 2009	E0900066	E080191



SECTION A-A

NOTES: (UNLESS OTHERWISE SPECIFIED)

- DO NOT SCALE FROM DRAWING.
- ALL MACHINING FLUIDS AND RELEASE AGENTS SHALL BE WATER SOLUBLE AND FREE OF SULFUR, CHLORINE AND SILICONE.
- PART TO BE INJECTION MOLDED.
- FLUOREL COMPOUND TO CONSIST OF:  
 100 PARTS FLUOREL FC2180 OR FE 5641  
 20 PARTS MT BLACK (N990)  
 3 PARTS MAGLITE (MgO)  
 6 PARTS Ca(OH)<sub>2</sub>  
 3 PARTS CaO
- MOLDED PARTS MUST BE KEPT FREE OF HYDROCARBONS AND HANDLED WITH CLEAN TOOLS OR CLEAN NITRILE GLOVES.
- FLASH REMOVAL TO BE DONE USING BLADE, NOT ABRASIVE.
- PARTS TO BE FOIL WRAPPED AND BAGGED. TAG EACH BAG WITH DRAWING NUMBER, REVISION AND QUANTITY.

EXAMPLE: D060546-v1 QTY: tbd

DIMENSIONS ARE IN INCHES		
TOLERANCES: .XX ± 0.01 .XXX ± 0.005		
ANGULAR ± 0.5 °		
MATERIAL FLUOREL (4)		
FINISH -		
	NAME	DATE
DRAWN	D. BRIDGES	12 NOV 2008
CHECKED	M. MEYER	12 NOV 2008
APPROVED		

	CALIFORNIA INSTITUTE OF TECHNOLOGY MASSACHUSETTS INSTITUTE OF TECHNOLOGY IGR, GLASGOW UNIVERSITY GEO 600 GROUP	
	SYSTEM	ADVANCED LIGO
SUB-SYSTEM	SUS	
NEXT ASSY	MULTIPLE ASSYS	
PART NAME	IMPACT ABSORBER FOR GLASS STOPS	
SIZE	DWG. NO.	REV.
A	D060546	v1
SCALE: 4:1	PROJECTION:	SHEET 1 OF 1