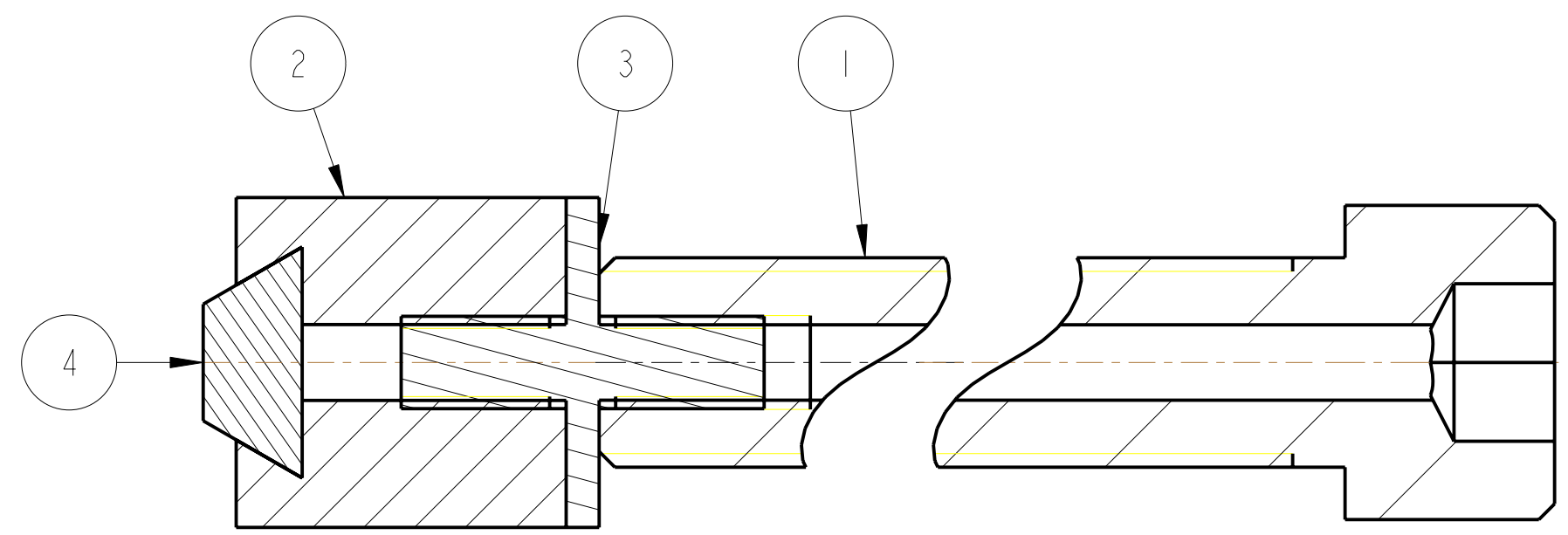
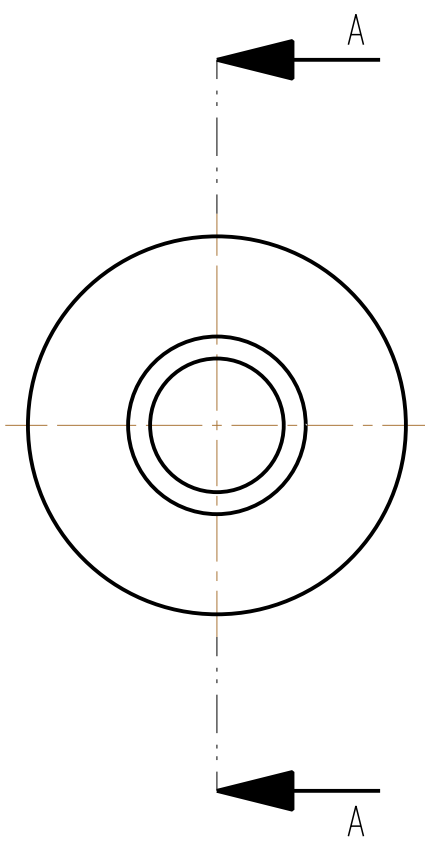


REV.	DATE	DCN #	DRAWING TREE #



SECTION A-A

ITEM	QTY	SPARE	TOTAL	PART NUMBER	DESCRIPTION	MATERIALS
1	1			D060545	EARTHQUAKE STOP ADJUSTER; MADE FROM 1/4" 20 UNC X 2" CAP HEAD	ST STEEL: 304/316
2	1			D060546	EARTHQUAKE STOP: (COMPLIANT)	FLOUREL: SEE NOTES
3	1			D060547	EARTHQUAKE STOP MOUNT PLATE: .	ST STEEL: 304/316
4	1			D060548	FUSED SILICA EARTHQUAKE STOP: .	FUSED SILICA: ANY GRADE

NOTES: (UNLESS OTHERWISE SPECIFIED)

- REMOVE ALL SHARP EDGES, R.02 MIN.
- DO NOT SCALE FROM DRAWING.
- ALL MACHINING FLUIDS SHALL BE WATER SOLUBLE AND FREE OF SULFUR, CHLORINE AND SILICONE, SUCH AS CINCINNATI MILACRON'S CIMTECH 410 (STAINLESS STEEL)
- SCRIBE, ENGRAVE OR STAMP DRAWING PARTNUMBER ON NOTED SURFACE OF PART AND A THREE DIGIT SERIAL NUMBER. SERIAL NUMBERS START AT 001 FOR THE FIRST PART AND PROCEED CONSECUTIVELY. USE .07" HIGH CHARACTERS. EXAMPLE: D020188- 001. A VIBRATORY TOOL MAY BE USED.

DIMENSIONS ARE IN mm [INCHES]
TOLERANCES:
X.XX ±N/A mm
ANGULAR ±N/A °

MATERIAL: N/A

FINISH: N/A
√μm [μin] Ra = -----

NAME	DATE
DRAWN I WILMUT	13/Dec/06
CHECKED MB	15/MAR/10
APPROVED JOD	15/MAR/10

CALIFORNIA INSTITUTE OF TECHNOLOGY
MASSACHUSETTS INSTITUTE OF TECHNOLOGY
IGR, GLASGOW UNIVERSITY GEO 600 GROUP
RUTHERFORD APPLETON LABORATORIES

SYSTEM **aLIGO**
SUB-SYSTEM **SUS**
NEXT ASSY **QUAD LOWER STRUCTURE**
PART NAME **EARTHQUAKE STOP ASSY**

SCALE 5:1 PROJECTION: SHEET 1 OF 1