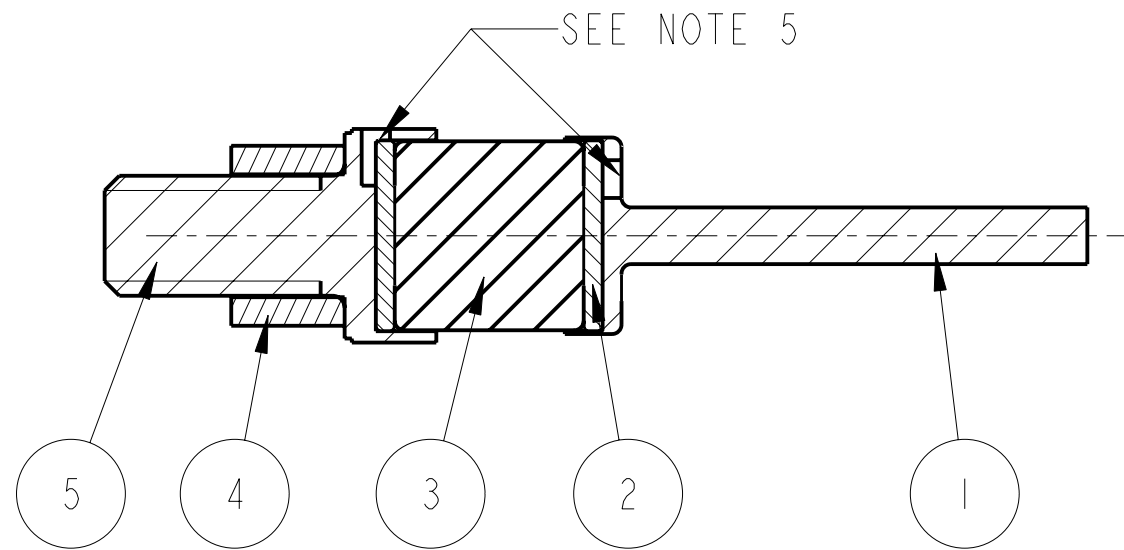
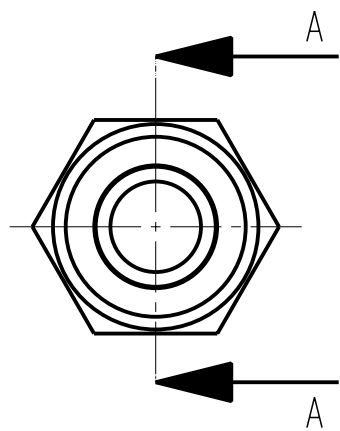
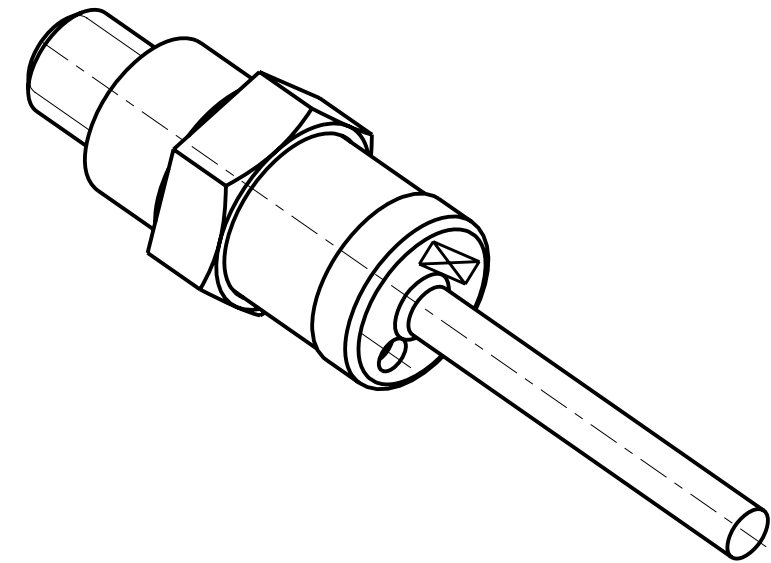


REV.	DATE	DCN #	DRAWING TREE #
A	19/OCT/06	E060248	
B	17/DEC/07	E060248-B	
H	15/JULY/08	E080368	



SECTION A-A



3-D VIEW

ADDITIONAL NOTES:

- 5. STEEL PLUGS ARE PRESS FITTED IN TO ALU AND SS PARTS
- 6. SUPPLY ALL ASSEMBLIES IN PART FORM

ITEM	QTY	SPARE	TOTAL	PART NUMBER	DESCRIPTION	MATERIALS
1	1			D060400	OSEM MAGNET FLAG; (MEGNETIC DESIGN)	ALUMINIUM: 5082
2	2			D060401	MAGNETIC PLUG; .	STAINLESS STEEL: 416
3	1			D0901344	10MM DIA X 10MM MAGNET; .	AS PAR SPEC: -----
4	1			D1003126	FLAG SPACER; QUAD TOP MASS	AL ALLOY: 6061/5083
5	1			D1003127	MAGNET RETAINER; (MODIFIED 1/4-20 HEX HEAD SCREW)	STAINLESS STEEL: 304/316
PARTS LIST						

NOTES: (UNLESS OTHERWISE SPECIFIED)

1. REMOVE ALL SHARP EDGES, R.02 MIN.
2. DO NOT SCALE FROM DRAWING.
3. ALL MACHINING FLUIDS SHALL BE WATER SOLUBLE AND FREE OF SULFUR, CHLORINE AND SILICONE, SUCH AS CINCINNATI MILACRON'S CIMTECH 410 (STAINLESS STEEL)
4. SCRIBE, ENGRAVE OR STAMP DRAWING PARTNUMBER ON NOTED SURFACE OF PART AND A THREE DIGIT SERIAL NUMBER. SERIAL NUMBERS START AT 001 FOR THE FIRST PART AND PROCEED CONSECUTIVELY. USE .07" HIGH CHARACTERS. EXAMPLE: D020188- 001. A VIBRATORY TOOL MAY BE USED.

DIMENSIONS ARE IN mm [INCHES]	
TOLERANCES:	
X.XX ±	mm °
ANGULAR ± °	
MATERIAL: AS DRAWING	
FINISH: AS DRW	
√μm [μin]	Ro = -----
NAME	DATE
DRAWN I WILMUT	30/03/11
CHECKED MB	15/MAR/10
APPROVED JOD	15/MAR/10

CALIFORNIA INSTITUTE OF TECHNOLOGY  
 MASSACHUSETTS INSTITUTE OF TECHNOLOGY  
 IGR, GLASGOW UNIVERSITY GEO 600 GROUP  
 RUTHERFORD APPLETON LABORATORIES

SYSTEM **ADVANCED LIGO**

SUB-SYSTEM **SUS**

NEXT ASSY **QUAD TOP MASS**

PART NAME **OSEM MAGNET AND FLAG**

SIZE **B** DRG. NO. **D060416** REV **K.**

SCALE 5:2 PROJECTION: SHEET 1 OF 1