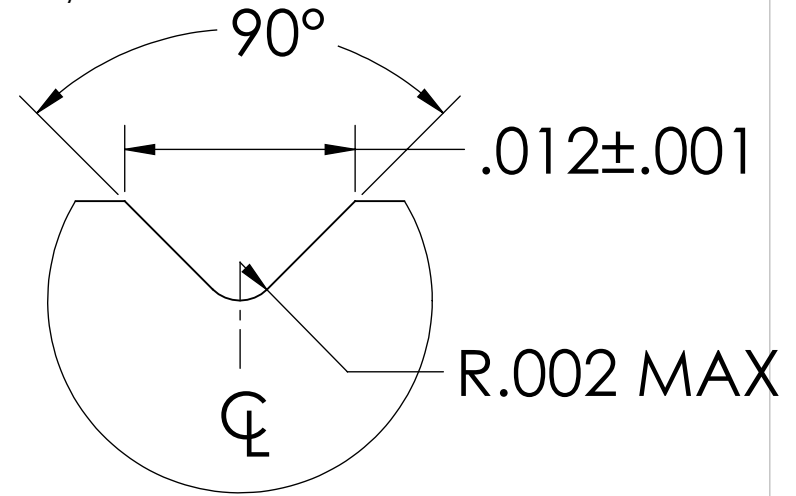
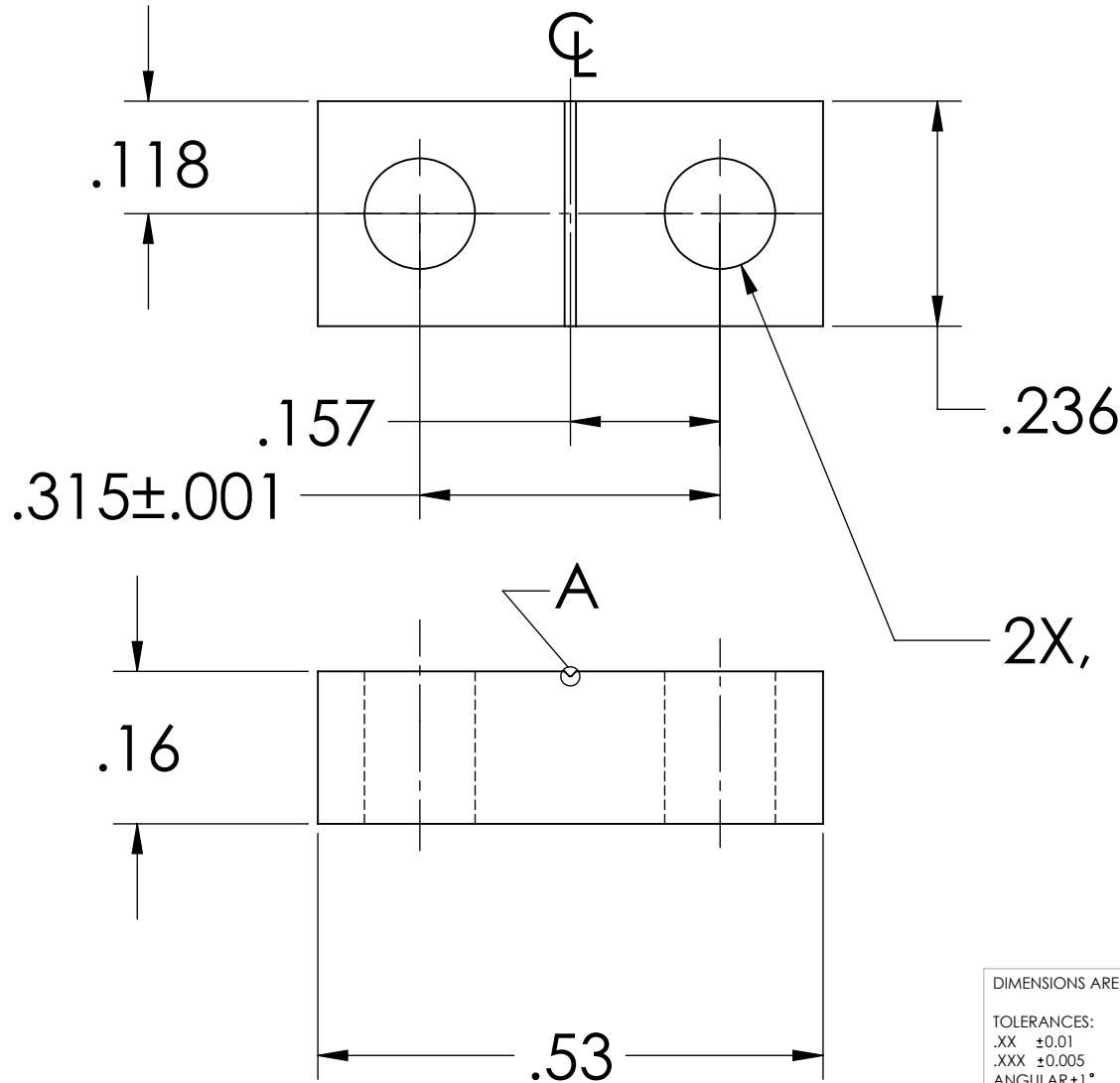


NOTES: (UNLESS OTHERWISE SPECIFIED)

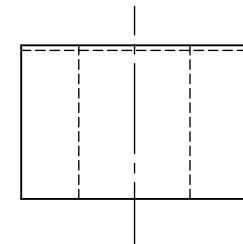
1. DIMENSIONS IN INCHES


2. ALL MACHINING FLUIDS SHALL BE WATER SOLUBLE AND FREE OF SULFUR, CHLORINE AND SILICONE, SUCH AS CINCINNATI MILACRON'S CIMTECH 410 (STAINLESS STEEL)

REV.	DATE	COMMENT
A	24th JUNE 2004	E040303-00
v1	21 APRIL 2009	E0900107-v1



DETAIL A
SCALE 100 : 1



DIMENSIONS ARE IN INCHES		NAME	DATE	 CALIFORNIA INSTITUTE OF TECHNOLOGY MASSACHUSETTS INSTITUTE OF TECHNOLOGY
TOLERANCES: .XX ±0.01 .XXX ±0.005 ANGULAR ±1°		CIT/RJ	05/02	
MATERIAL 302, 304 OR 316 SSSL		COMMENTS:		SYSTEM ADVANCED LIGO
FINISH				SUB-SYSTEM SUS
				NEXT ASSY MC: UPPER MASS
				PART NAME UPPER BLADE WIRE CLAMP PLATE
		SIZE A	DWG. NO. D030042	REV V1
		SCALE: NTS		SHEET 1 OF 1