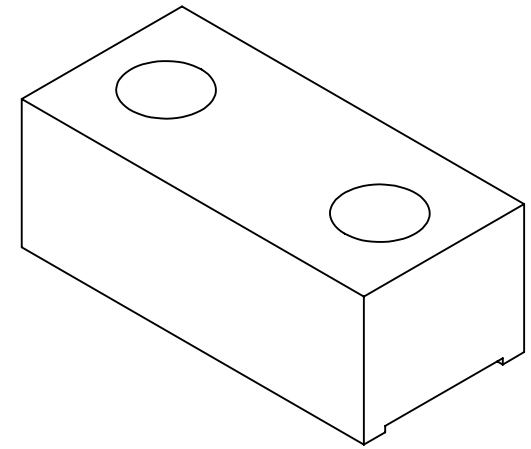
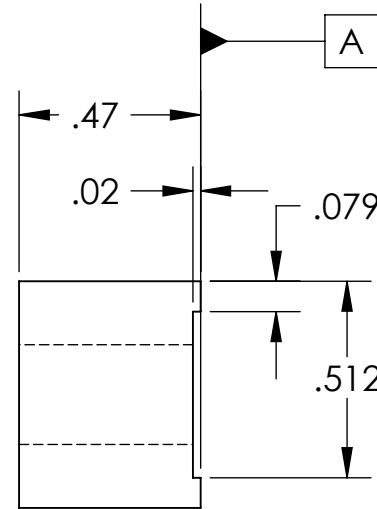
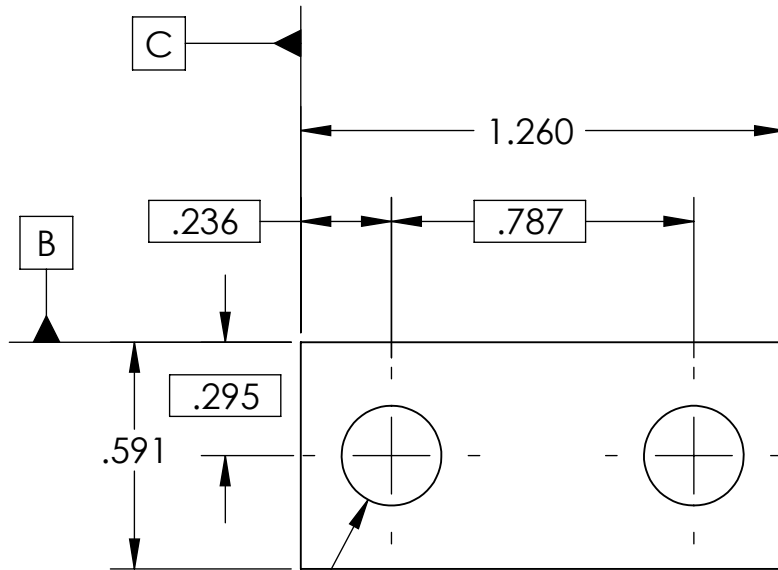


| REV. | DATE        | DCN #      | DRAWING TREE # |
|------|-------------|------------|----------------|
| A    | 01 AUG 2008 | E080418-00 | E080191-01-D   |
|      |             |            |                |



2X  $\phi$ .260 THRU

|          |        |      |   |   |   |
|----------|--------|------|---|---|---|
| $\oplus$ | $\phi$ | .010 | A | B | C |
|----------|--------|------|---|---|---|

NOTES: (UNLESS OTHERWISE SPECIFIED)

- DO NOT SCALE FROM DRAWING.
- REMOVE ALL SHARP EDGES, R.02 MAX.
- ALL MACHINING FLUIDS SHALL BE WATER SOLUBLE AND FREE OF SULFUR, CHLORINE AND SILICONE.
- BAG ALL ITEMS INDIVIDUALLY AND TAG EACH BAG WITH DRAWING NUMBER, REVISION AND QUANTITY.  
EXAMPLE: D020602-00 QTY: tbd
- L AND LN VARIANTS OF 304, 316 AND 302 TYPE STAINLESS STEEL ARE ALSO ACCEPTABLE.
- 303 TYPE STAINLESS STEEL IS NOT ACCEPTABLE.

DIMENSIONS ARE IN INCHES

TOLERANCES:

.XX  $\pm$  0.01

.XXX  $\pm$  0.005

ANGULAR  $\pm$  0.5°

MATERIAL

304, 316 OR 302 SSSL

FINISH

32  $\mu$  inch

|          | NAME       | DATE        |
|----------|------------|-------------|
| DRAWN    | B. KIRSNER | 2 MAY 2008  |
| CHECKED  | M. MEYER   | 08 MAY 2008 |
| APPROVED |            |             |



SYSTEM ADVANCED LIGO

SUB-SYSTEM SUS

NEXT ASSY UPPER MASS ASSEMBLY

PART NAME BLADE CLAMP, LOWER BLADE, INSIDE

SIZE DWG. NO. D020602

REV. A

SCALE: 1:1 PROJECTION: SHEET 1 OF 1