

NOTES: (UNLESS OTHERWISE SPECIFIED)

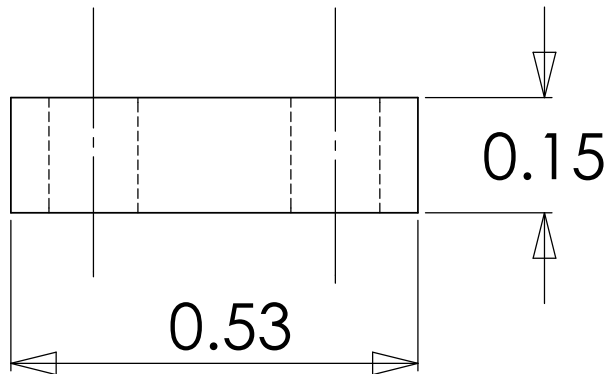
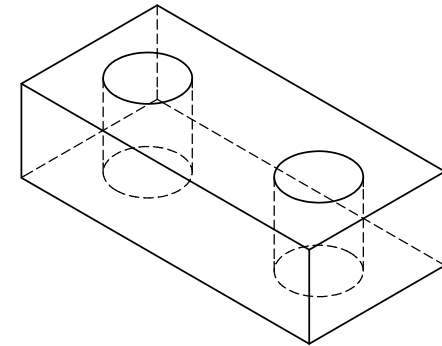
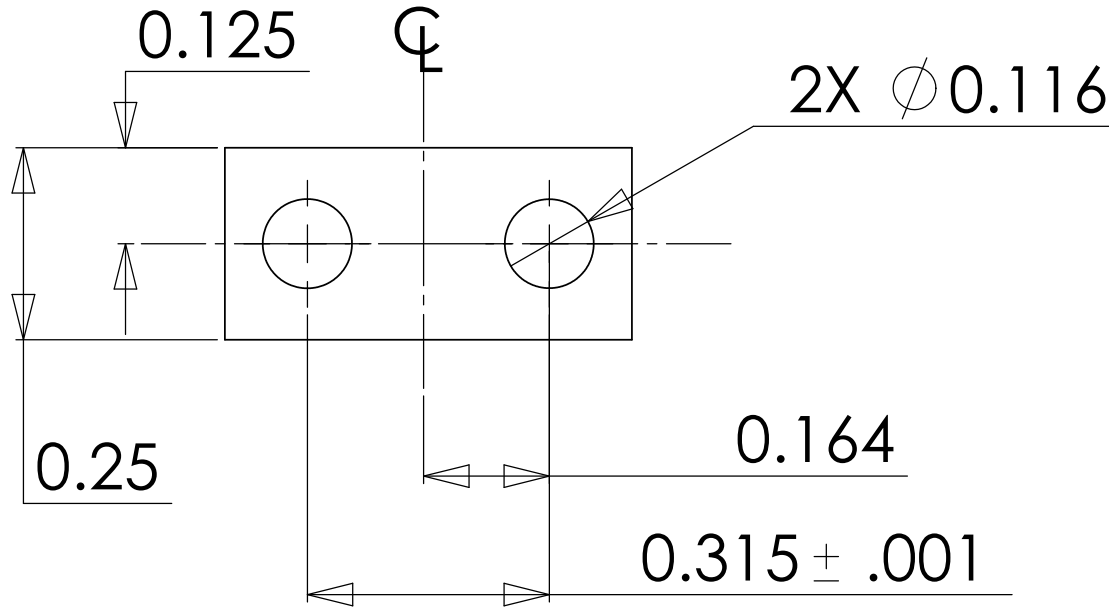
1. DIMENSIONS IN INCHES

2. ALL MACHINING FLUIDS SHALL BE WATER SOLUBLE AND FREE OF SULFUR, CHLORINE AND SILICONE, SUCH AS CINCINNATI MILACRON'S CIMTECH 410 (STAINLESS STEEL)

REV.	DATE	
A	24TH JUNE 2004	E040303-00



D020380\_WireStart\_clamp\_upper.step



DIMENSIONS ARE IN INCHES		NAME	DATE	CALIFORNIA INSTITUTE OF TECHNOLOGY MASSACHUSETTS INSTITUTE OF TECHNOLOGY
TOLERANCES: .XX ±0.01 .XXX ±0.005 ANGULAR ±1°		DRAWN DM	07/16	
MATERIAL 6061-T6-AL		CHECKED		SYSTEM ADVANCED LIGO
FINISH				SUB-SYSTEM SUS
		COMMENTS:		NEXT ASSY MC: WIRE JIGS
				PART NAME WIRE START CLAMP UPPER
		SIZE A	DWG. NO. D020380	REV. A
		SCALE: NTS		SHEET 1 OF 1