

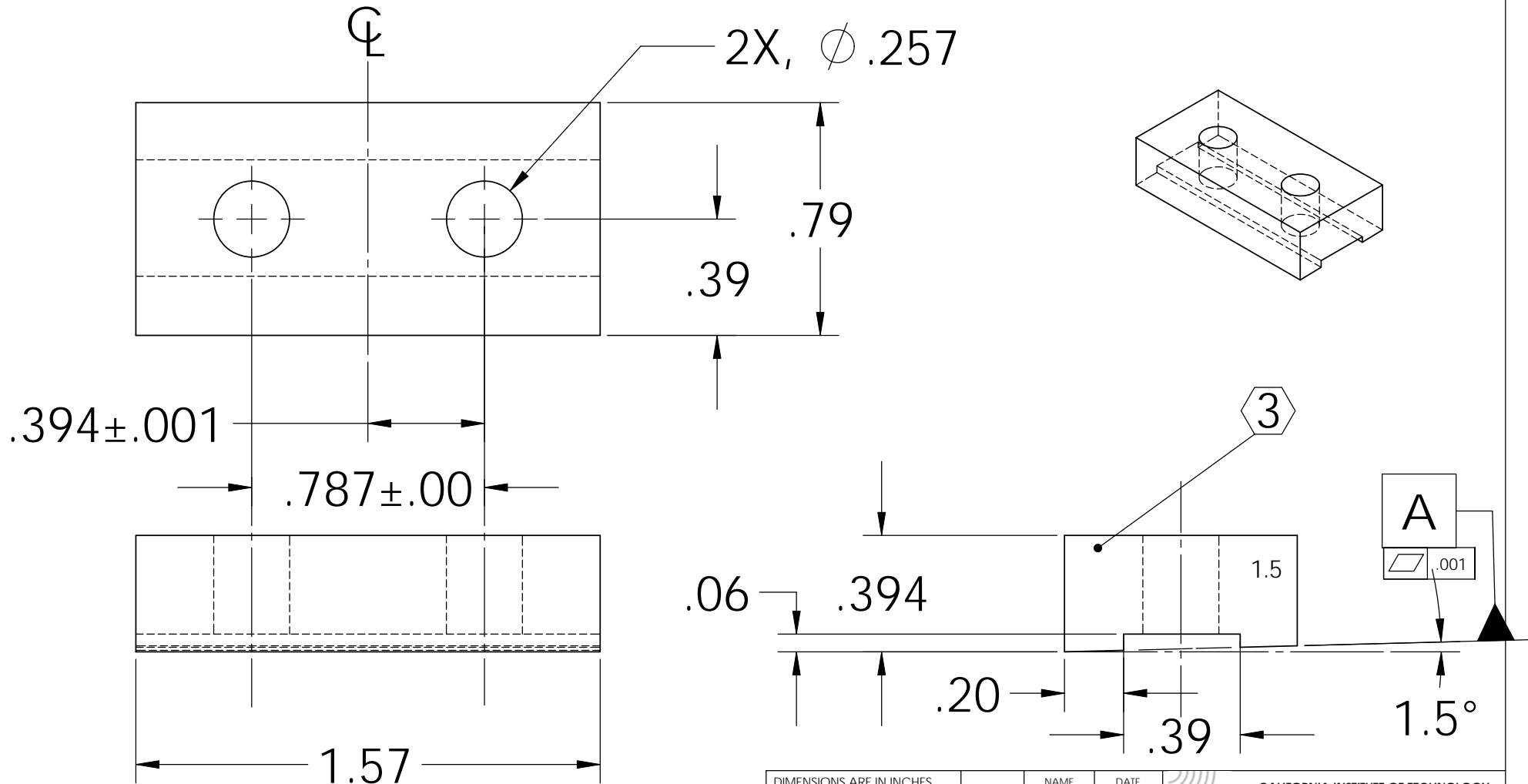
NOTES: (UNLESS OTHERWISE SPECIFIED)

1. DIMENSIONS IN INCHES

2. ALL MACHINING FLUIDS SHALL BE WATER SOLUBLE AND FREE OF SULFUR, CHLORINE AND SILICONE, SUCH AS CINCINNATI MILACRON'S CIMTECH 410 (STAINLESS STEEL)

3. USING A VIBRATORY TOOL MARK PART AS INDICATED

REV.	DATE	DCN #	DRAWING TREE #
A	24 JUNE 2004	E040303-00	
v1	21 APRIL 2009	E0900107-v1	



DIMENSIONS ARE IN INCHES		NAME	DATE	CALIFORNIA INSTITUTE OF TECHNOLOGY MASSACHUSETTS INSTITUTE OF TECHNOLOGY
TOLERANCES: .XX ±0.01 .XXX ±0.005 ANGULAR ±.25°		CIT/RJ	05/02	
MATERIAL		CHECKED		SYSTEM
302, 304 OR 316 SSTL				SUB-SYSTEM
FINISH		COMMENTS:		NEXT ASSY
				LIBRARY OF CLAMPS
				PART NAME
				UPPER BLADE CLAMP UPPERSIDE ANGLED (1.5°)
SIZE	DWG. NO.	REV.		
A	D020327	v1		
SCALE: NTS		SHEET 1 OF 1		