

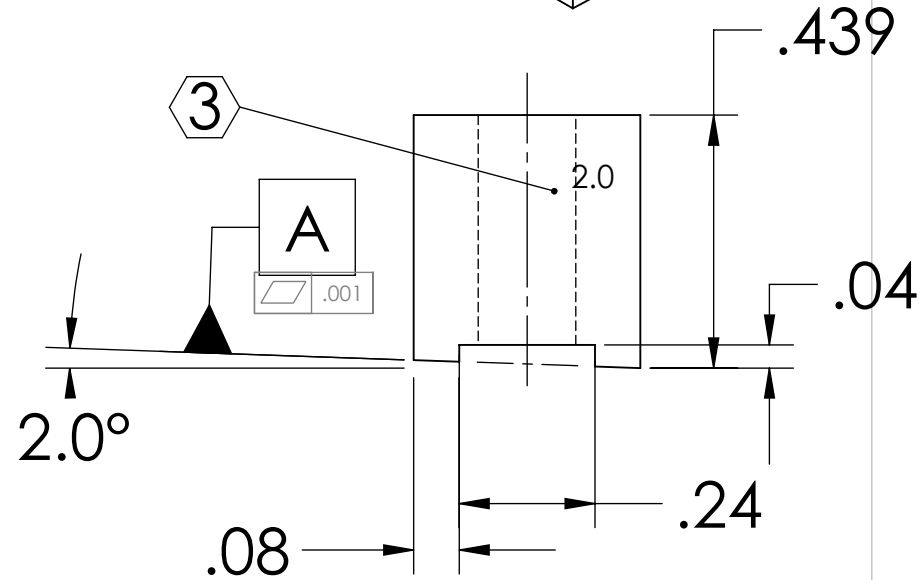
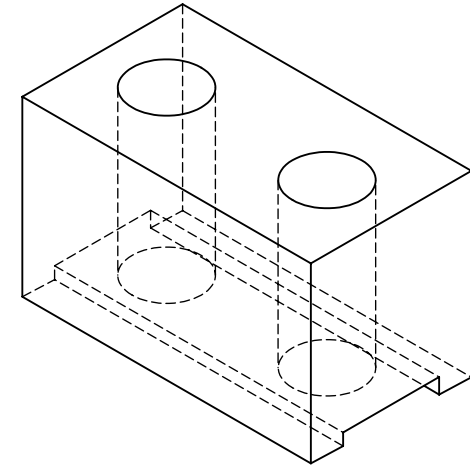
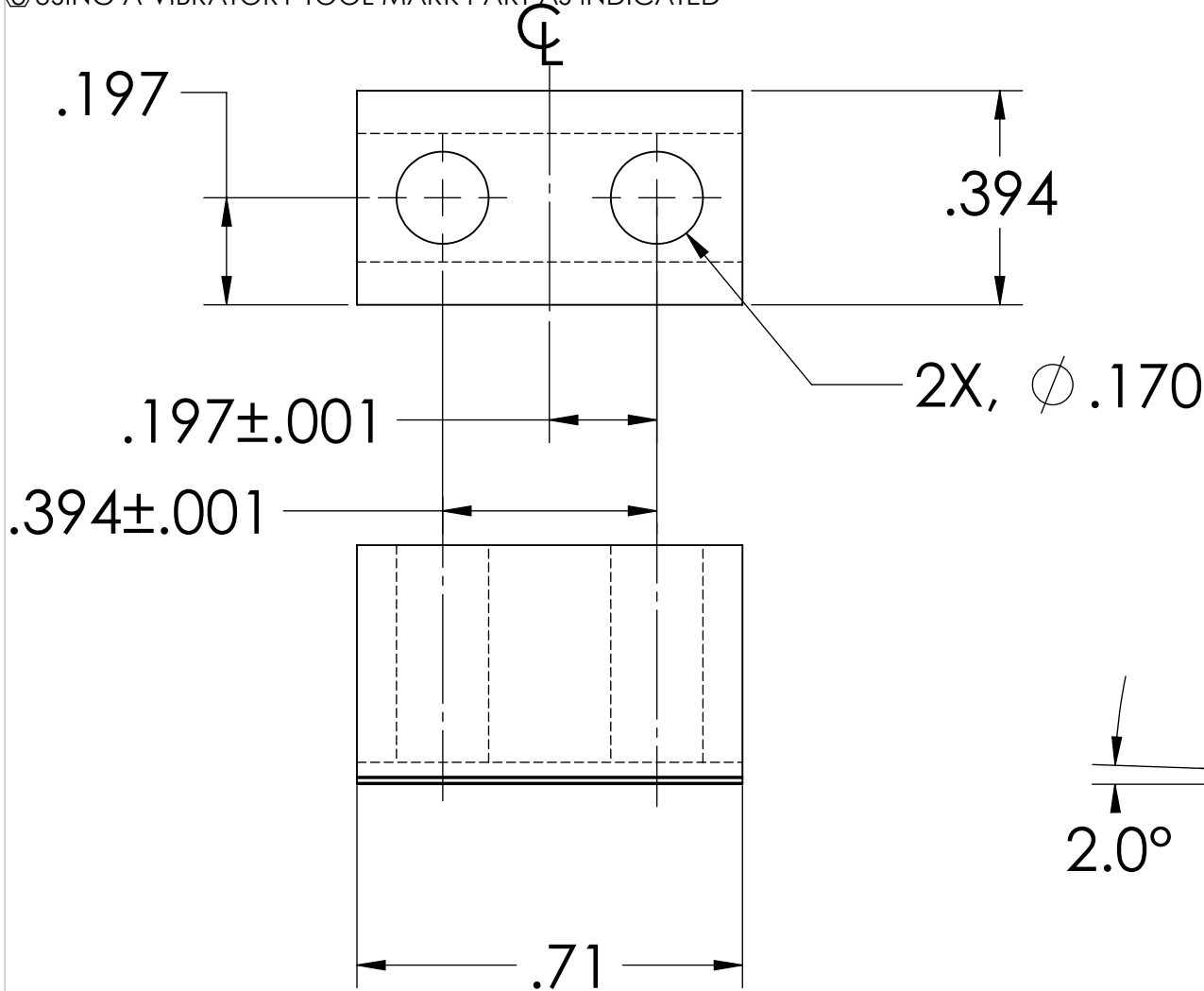
NOTES: (UNLESS OTHERWISE SPECIFIED)

1. DIMENSIONS IN INCHES

2. ALL MACHINING FLUIDS SHALL BE WATER SOLUBLE AND FREE OF SULFUR, CHLORINE AND SILICONE, SUCH AS CINCINNATI MILACRON'S CIMTECH 410 (STAINLESS STEEL)

③ USING A VIBRATORY TOOL MARK PART AS INDICATED

REV.	DATE	DCN #	DRAWING TREE #
A	24 JUNE 2004	E040303-00	
v1	21 APRIL 2009	E0900107-v1	



DIMENSIONS ARE IN INCHES		NAME	DATE	CALIFORNIA INSTITUTE OF TECHNOLOGY MASSACHUSETTS INSTITUTE OF TECHNOLOGY
TOLERANCES: .XX ±0.01 .XXX ±0.005 ANGULAR ±.25°		CIT/RJ	05/02	
MATERIAL	302, 304 OR 316 STAINLESS	CHECKED		SYSTEM
FINISH		COMMENTS:		SUB-SYSTEM
				SUS
				NEXT ASSY
				LIBRARY OF CLAMPS
				PART NAME
				LOWER BLADE CLAMP UPPER SIDE ANGLED
				SIZE
				A
				DWG. NO.
				D020314
				REV.
				v1
				SCALE: NTS
				SHEET 1 OF 1