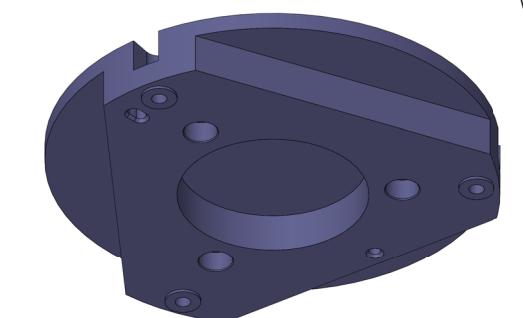
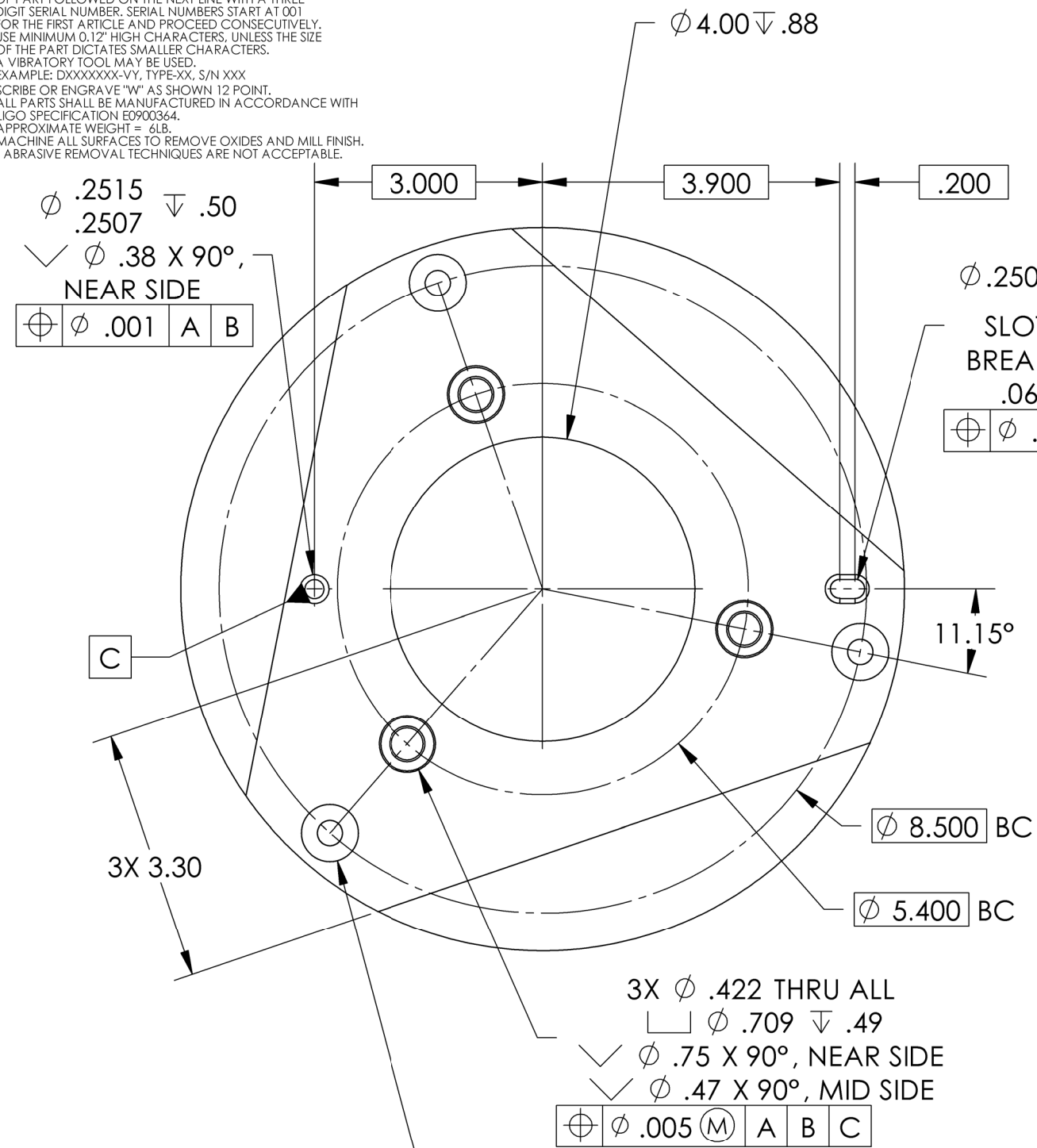


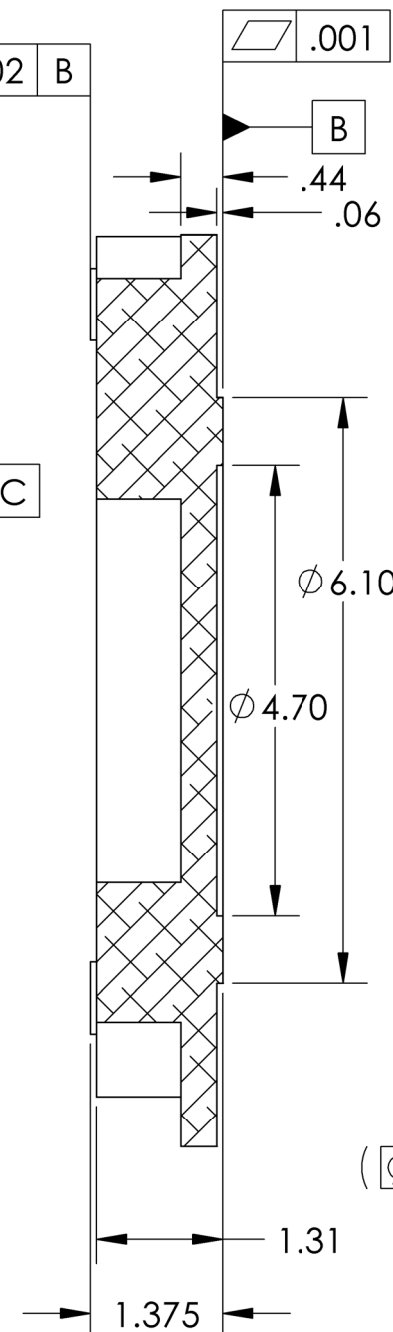
NOTES CONTINUED:
 5. SCRIBE, ENGRAVE, OR MECHANICALLY STAMP (NO INKS OR DYES) DRAWING PART NUMBER, REVISION (AND VARIANT OR "TYPE" IF APPLICABLE) ON NOTED SURFACE OF PART FOLLOWED ON THE NEXT LINE WITH A THREE DIGIT SERIAL NUMBER. SERIAL NUMBERS START AT 001 FOR THE FIRST ARTICLE AND PROCEED CONSECUTIVELY. USE MINIMUM 0.12" HIGH CHARACTERS, UNLESS THE SIZE OF THE PART DICTATES SMALLER CHARACTERS. A VIBRATORY TOOL MAY BE USED.
 EXAMPLE: DXXXXXX-VY, TYPE-XX, S/N XXX
 6. SCRIBE OR ENGRAVE "W" AS SHOWN 12 POINT.
 7. ALL PARTS SHALL BE MANUFACTURED IN ACCORDANCE WITH LIGO SPECIFICATION E0900364.
 8. APPROXIMATE WEIGHT = 6LB.
 9. MACHINE ALL SURFACES TO REMOVE OXIDES AND MILL FINISH. ABRASIVE REMOVAL TECHNIQUES ARE NOT ACCEPTABLE.

REV.	DATE	DCN #	DRAWING TREE #
v1	26 Jan. 2010	E0900443-X0	E1000025
v2	22 Mar 2010	E0900443-v1	E1000025

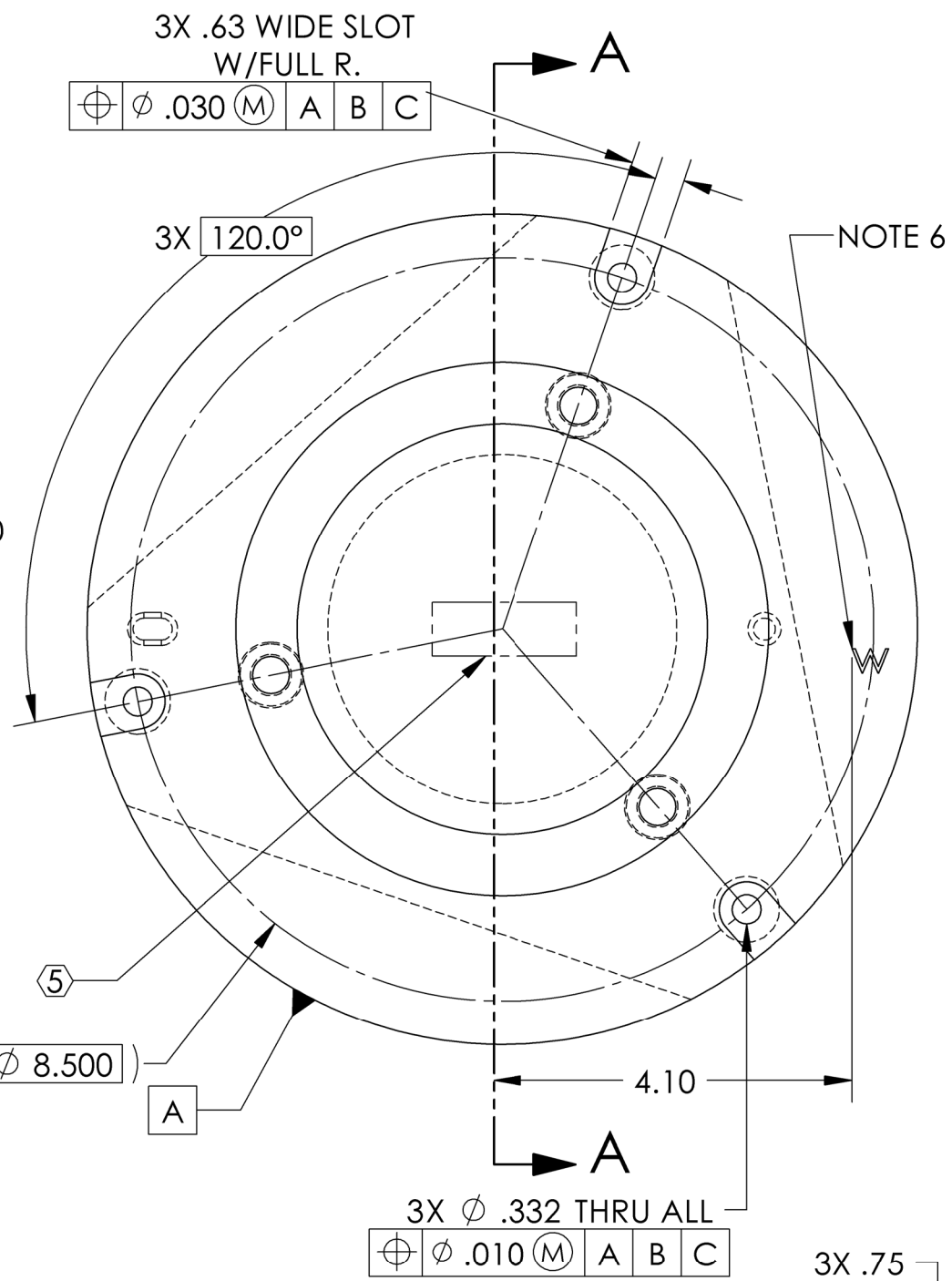


ϕ .75 RAISED PADS
 .75 X .75
 SQUARE PADS ACCEPTABLE

ϕ .2507 $^{+.0008}_{-.0000}$
 SLOT \downarrow .50
 BREAK EDGE
 .06X45°



SECTION A-A



NOTE 6

NOTES AND TOLERANCES: (UNLESS OTHERWISE SPECIFIED)				LIGO CALIFORNIA INSTITUTE OF TECHNOLOGY MASSACHUSETTS INSTITUTE OF TECHNOLOGY		PART NAME	
DIMENSIONS ARE IN INCHES				ADVANCED LIGO		Trillium Pod Interposer	
TOLERANCES: .XX \pm .015 .XXX \pm .005				SUB-SYSTEM SEI		DESIGNER S.BARNUM 2 Dec. 2009	SIZE DWG. NO. B D0900651
ANGULAR \pm 0.1°				NEXT ASSY D0900648		DRAFTER M.HILLARD 26 Jan. 2010	REV. v2
MATERIAL 6061-T6 Al				FINISH 63 μ inch		CHECKER F.MATICHARD 26 Jan. 2010	SCALE: 1:2
						APPROVAL K.MASON 26 Jan. 2010	PROJECTION: SHEET 1 OF 1

D0900651_Trillium-Pod Interposer, PART PDM REV: X-018, DRAWING PDM REV: X-009