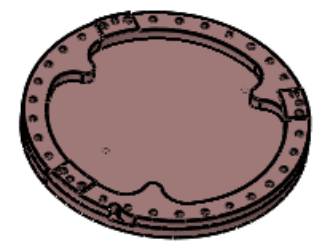
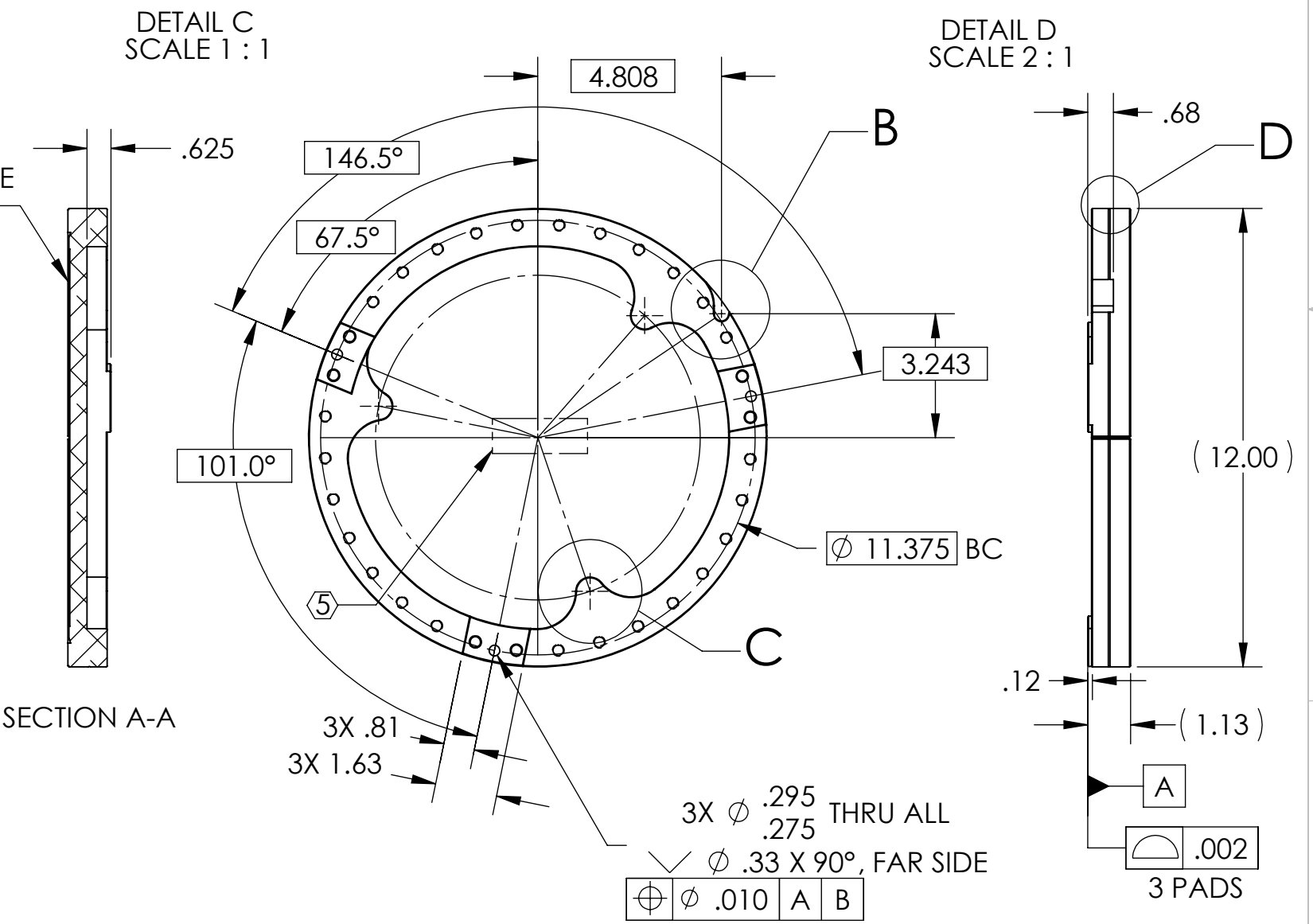
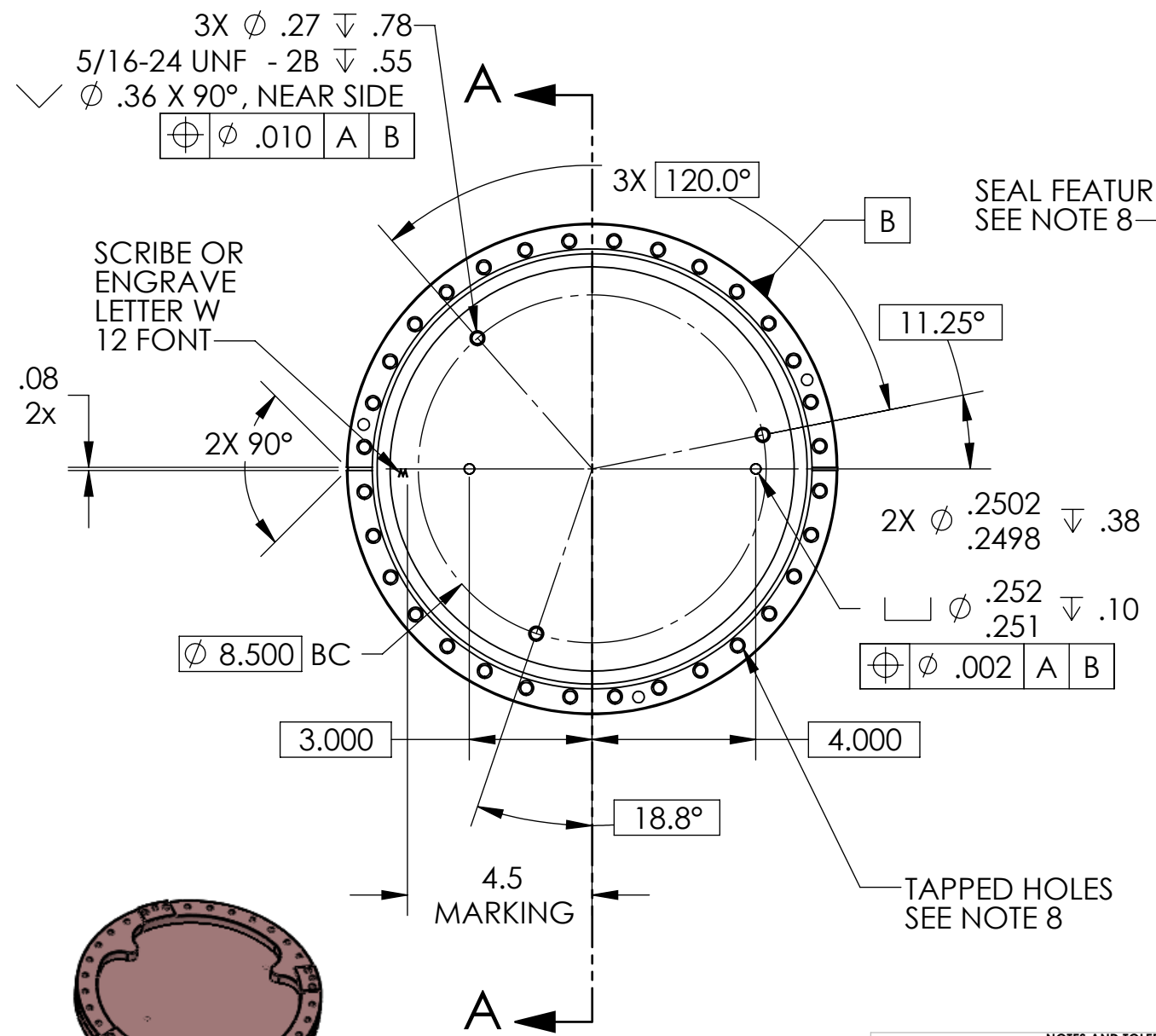
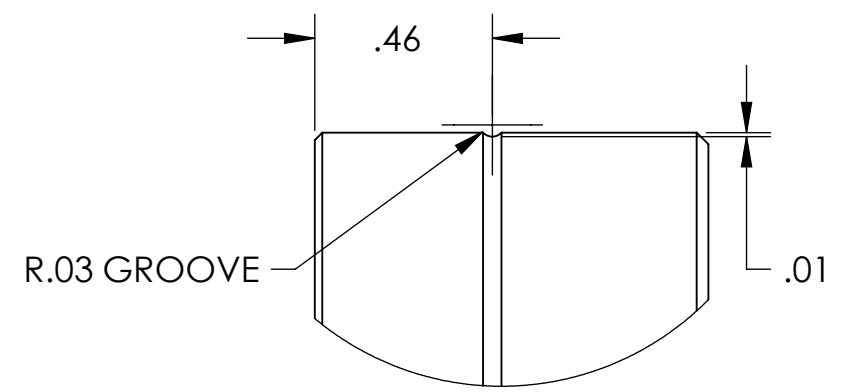
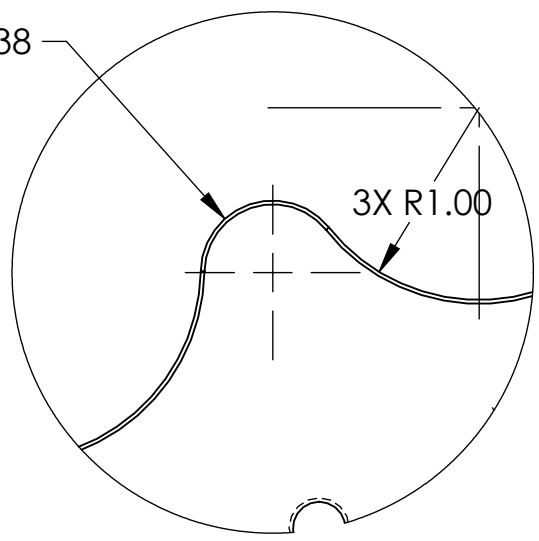
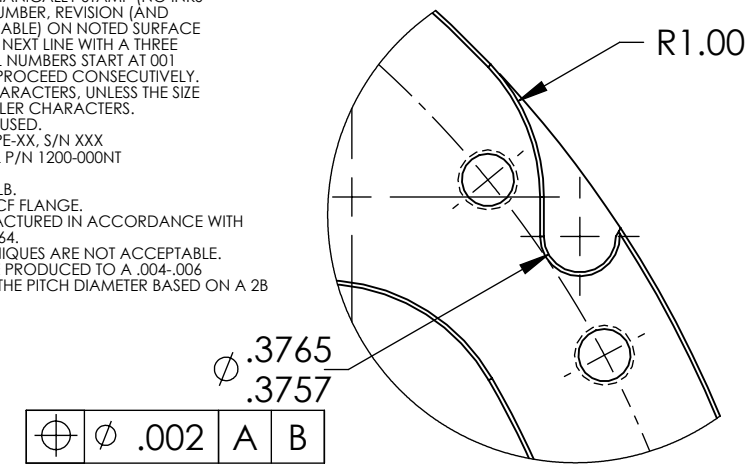


REV.	DATE	DCN #	DRAWING TREE #
v1	26 Jan. 2010	E0900443-X0	E1000025
v2	22 MAR 2010	E0900443-V1	E1000025
v3	20 MAY 2010	E0900171-V1	E1000025

**NOTES CONTINUED:**  
 3. SCRIBE, ENGRAVE, OR MECHANICALLY STAMP (NO INKS OR DYES) DRAWING PART NUMBER, REVISION (AND VARIANT OR "TYPE" IF APPLICABLE) ON NOTED SURFACE OF PART FOLLOWED ON THE NEXT LINE WITH A THREE DIGIT SERIAL NUMBER. SERIAL NUMBERS START AT 001 FOR THE FIRST ARTICLE AND PROCEED CONSECUTIVELY. USE MINIMUM 0.12" HIGH CHARACTERS, UNLESS THE SIZE OF THE PART DICTATES SMALLER CHARACTERS. A VIBRATORY TOOL MAY BE USED.  
 EXAMPLE: DXXXXXX-VY, TYPE-XX, S/N XXX  
 6. MODIFICATION TO NOR-CAL P/N 1200-000NT OR EQUIVALENT.  
 7. APPROXIMATE WEIGHT = 20 LB.  
 8. INCLUDED WITH STANDARD CF FLANGE.  
 9. ALL PARTS SHALL BE MANUFACTURED IN ACCORDANCE WITH LIGO SPECIFICATION E0900364.  
 10. ABRASIVE REMOVAL TECHNIQUES ARE NOT ACCEPTABLE.  
 11. THREADED HOLES SHALL BE PRODUCED TO A .004-.006 OVERSIZE CONDITION ON THE PITCH DIAMETER BASED ON A 2B CONDITION.



NOTES AND TOLERANCES: (UNLESS OTHERWISE SPECIFIED)				LIGO CALIFORNIA INSTITUTE OF TECHNOLOGY MASSACHUSETTS INSTITUTE OF TECHNOLOGY		PART NAME	
DIMENSIONS ARE IN INCHES				ADVANCED LIGO		Trillium Pod Base Flange	
TOLERANCES: .XX ± .015 .XXX ± .005				SEI		DESIGNER	S.Barnum
ANGULAR ± 0.1°				NEXT ASSY		DRAFTER	M.Hillard
MATERIAL 304 SSSL SEE NOTE 6				D0900648		CHECKER	F.Matichard
FINISH 63 μinch				D0900648		APPROVAL	K.Mason
						DATE	2 Dec. 2009
						SIZE	DWG. NO.
						B D0900650	
						REV.	v3
						SCALE	1:4
						PROJECTION	AS SHOWN
						SHEET 1 OF 1	

D0900650\_Trillium\_Pod\_BaseFlange, PART PDM REV: X-029, DRAWING PDM REV: X-013