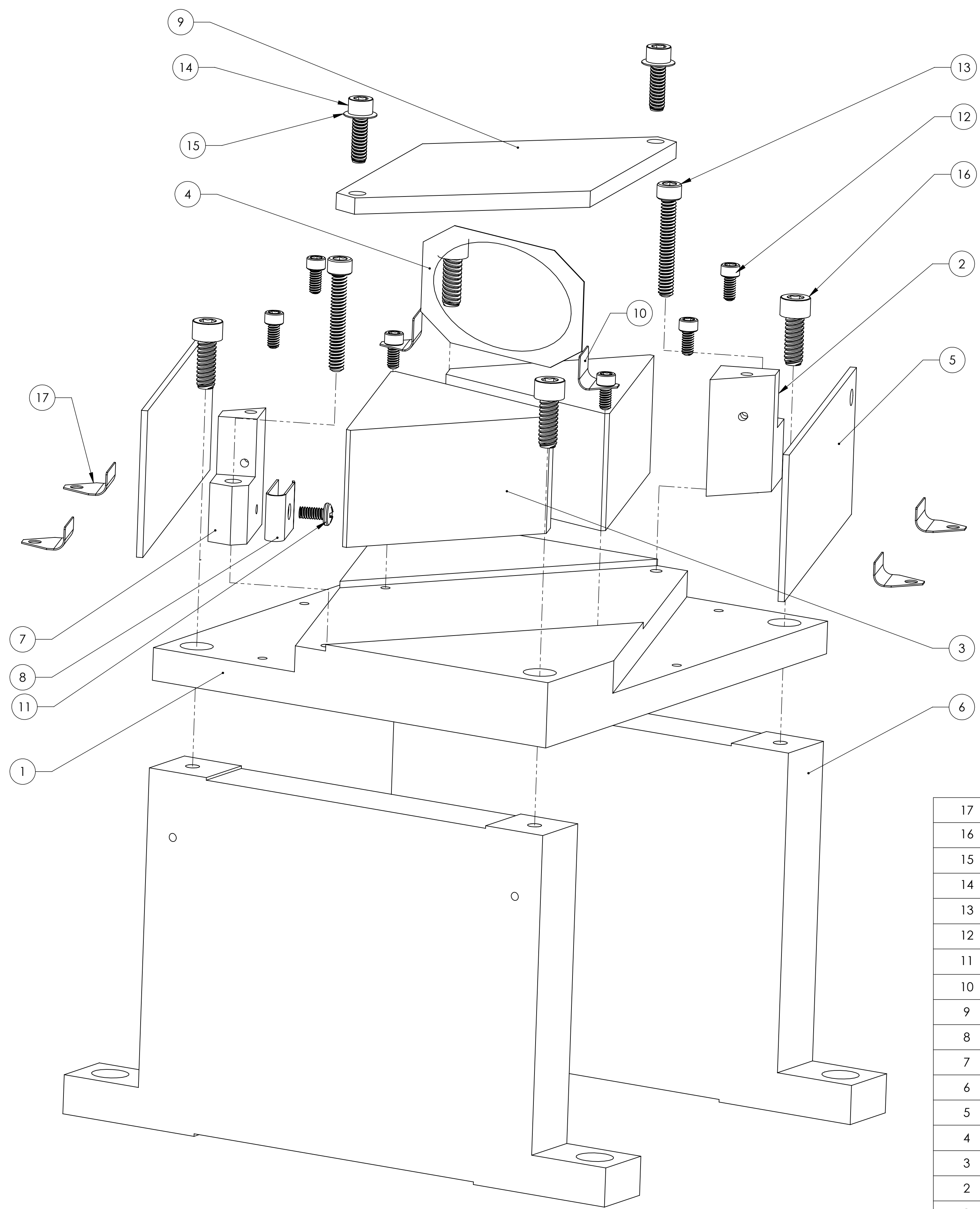
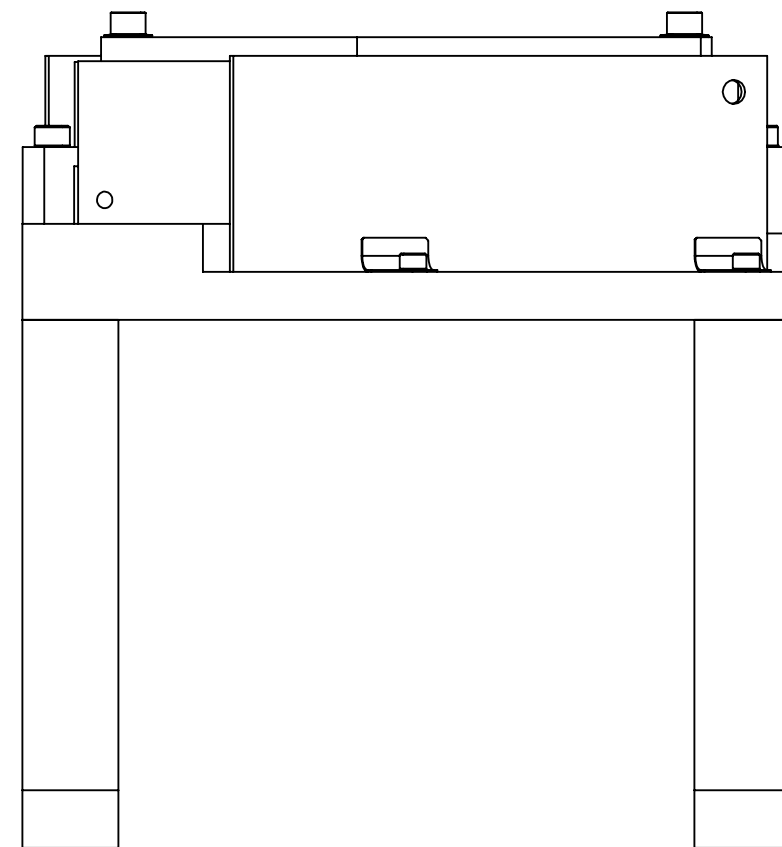
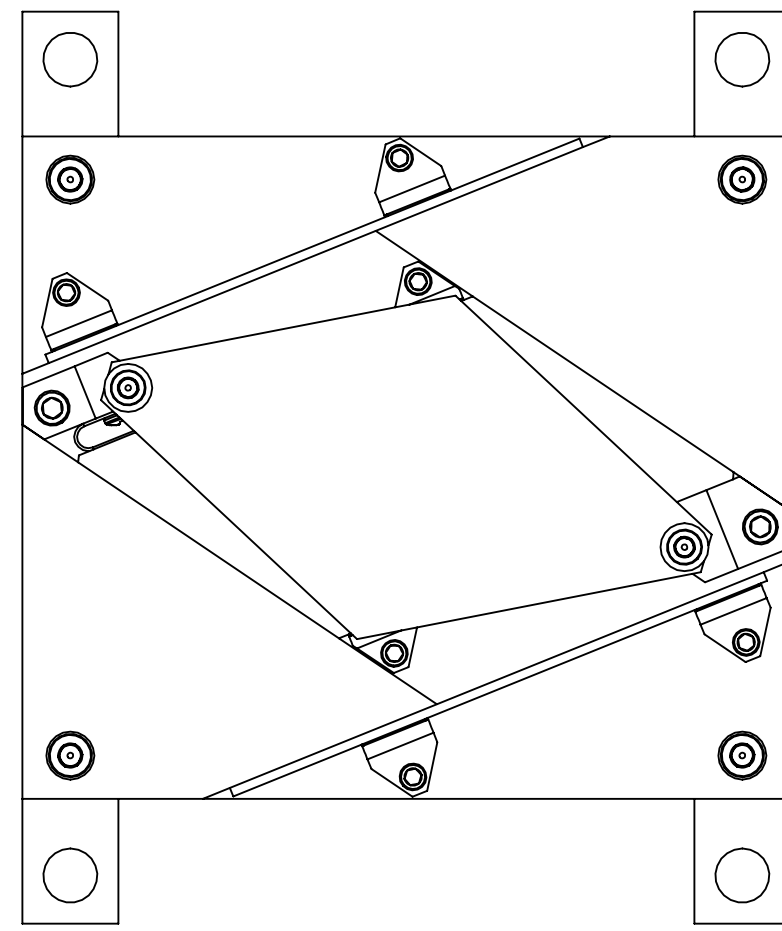


NOTES CONTINUED:
 5. APPROXIMATE WEIGHT = 1.866LBS.
 6. MACHINE ALL SURFACES TO REMOVE OXIDES AND MILL FINISH.
 USE OF ABRASIVE REMOVAL TECHNIQUES IS NOT ALLOWED.
 7. ALL PARTS SHALL BE MANUFACTURED IN ACCORDANCE WITH LIGO SPECIFICATION E0900364.

REV.	DATE	DCN #	DRAWING TREE #
v1	7 OCT 2010	E1000563	-
v2	17 DEC 2010	E1000563	



ITEM NO.	PART NUMBER	DESCRIPTION	MATERIAL	QTY	SPARE	TOTAL
17	D1100027	CLIP	304 SSTL	4		0
16	92200A146	Head Cap Screw 300 Series SS, 6-32 Thrd, 3/8" Length, MS 16995-17	300 SSTL	4		0
15	9713K53	Disc Spring_Stainless Steel Belleville, .125 ID, .250 OD, .009 Thick	304 SSTL	2		0
14	92200A108	Head Cap Screw 300 Series SS, 4-40 Thrd, 3/8" Length, MS 16995-10	18-8 SSTL	2		0
13	92185A112	Head Cap Screw 300 Series SS, 4-40 Thrd, 3/4" Length	300 SSTL	2		0
12	92200A076	Head Cap Screw 300 Series SS, 2-56 Thrd, 3/16" Length, MS 16995-1	300 SSTL	6		0
11	91772A076	18-8 SS Pan Head Phillips Machine Screw	300 SSTL	1		0
10	D0900619	CLIP	304 SSTL	2		0
9	D0900618	OPTICAL PRISM TOP PLATE	6061-T6 Al	1		0
8	D1001861	U-SPRING	304 SSTL	1		0
7	D1001860	SPRING BLOCK_RH	6061-T6 Al	1		0
6	D1001862	PRISM BASE SUPPORT	6061-T6 Al	2		0
5	D1001864	PRISM BEAM DUMP	A424 TYPE I, 18GA SSTL	2		0
4	D1001863	OPTICAL PRISM SPACER	304 SSTL	1		0
3	D0900617	OPTICAL PRISM	CALCITE	2		0
2	D1001859	FIXED STOP_RH	6061-T6 Al	1		0
1	D0900620	PRISM MOUNT BASE_RH	6061-T6 Al	1		0

NOTES AND TOLERANCES: (UNLESS OTHERWISE SPECIFIED)	
1. INTERPRET DRAWING PER ASME Y14.5-1994.	
2. REMOVE ALL SHARP EDGES, R.02 MIN.	
3. DO NOT SCALE FROM DRAWING.	
4. ALL MACHINING FLUIDS MUST BE FULLY SYNTHETIC, FULLY WATER SOLUBLE AND FREE OF SULFUR, SILICONE, AND CHLORINE.	
MATERIAL	N/A
FINISH	N/A μinch

CALIFORNIA INSTITUTE OF TECHNOLOGY MASSACHUSETTS INSTITUTE OF TECHNOLOGY		PART NAME PRISM MOUNT ASSY_RH	
SYSTEM ADVANCED LIGO	SUB-SYSTEM AOS	DESIGNER TQ. NGUYEN	DATE 19 JUL 2010
CHECKER M. SMITH	DATE 23 AUG 2010	SIZE D	DWG. NO. D0900615
APPROVAL D. COYNE	SCALE 1:2	PROJECTION 	REV. v2
NEXT ASSY D0900623		SHEET 1 OF 1	

D0900615.dwg_AOS_Prim_Mounting_ASSY_RH_PART_PDM_REV-X-016_DRAWING_PDM_REV-X-013