

Coaxial  
Amplifier

ZHL-1-2W

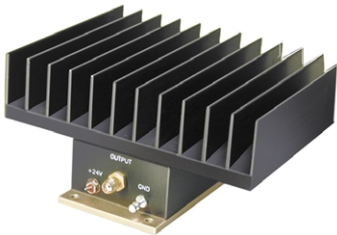
50Ω    High Power    2W    5 to 500 MHz

Features

- wideband, 5 to 500 MHz
- high power output, +33 dBm min.
- high gain, +29 dB min.
- high IP3, +44 dBm typ.

Applications

- VHF/UHF
- instrumentation
- laboratory



SMA version shown

CASE STYLE: T35

Connectors	Model	Price	Qty.
BNC	ZHL-1-2W	\$525.00	(1-9)
SMA	ZHL-1-2W-S	\$535.00	(1-9)
N-TYPE	ZHL-1-2W-N	\$535.00	(1-9)

Electrical Specifications

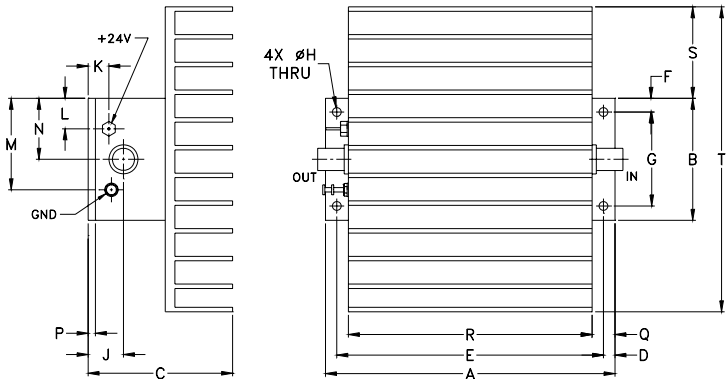
MODEL NO.	FREQ. (MHz)		GAIN (dB)		MAXIMUM POWER OUTPUT (dBm)		DYNAMIC RANGE		VSWR (:1) Typ.		DC POWER	
	f <sub>L</sub>	f <sub>U</sub>	Min.	Flatness Max.	(1 dB Compr.) Min.	Input (no damage)	NF (dB) Typ.	IP3 (dBm) Typ.	In	Out	Volt (V) Nom.	Current (A) Max.
ZHL-1-2W	5	500	29	±1.0	+33	+10	12	+44	2.0	2.0	24	0.9

Open load is not recommended, potentially can cause damage  
With no load derate max input power by 20 dB

Maximum Ratings

Operating Temperature	-20°C to 65°C
Storage Temperature	-55°C to 100°C
DC Voltage	+25V Max.

Outline Drawing



Outline Dimensions (inch mm)

A	B	C	D	E	F	G	H	J	K	L	M	N	P	Q	R	S	T	wt
4.75	2.00	2.37	.19	4.375	.23	1.540	.144	.58	.34	.50	1.50	1.00	.12	.38	4.00	1.50	5.0	grams
120.65	50.80	60.20	4.83	111.13	5.84	39.12	3.66	14.73	8.64	12.70	38.10	25.40	3.05	9.65	101.60	38.10	127.00	700.0



P.O. Box 350166, Brooklyn, New York 11235-0003 (718) 934-4500 Fax (718) 332-4661 For detailed performance specs & shopping online see Mini-Circuits web site  
The Design Engineers Search Engine Provides ACTUAL Data Instantly From MINI-CIRCUITS At: [www.minicircuits.com](http://www.minicircuits.com)



RF/IF MICROWAVE COMPONENTS

REV. OR  
M98142  
ZHL-1-2W  
071018  
Page 1 of 2

FREQUENCY (MHz)	GAIN (dB)			DIRECTIVITY (dB)			VSWR (:1)		NOISE FIGURE (dB)	POUT at 1 dB COMPR. (dBm)
	23V	24V	24.5V	23V	24V	24.5V	IN	OUT	24V	24V
5.00	32.84	32.87	32.92	25.30	26.00	26.10	1.25	1.33	—	34.98
11.30	32.45	32.47	32.50	25.90	26.70	26.00	1.07	1.32	6.11	35.08
33.40	32.41	32.42	32.45	25.80	23.80	24.30	1.16	1.32	6.06	35.42
98.80	33.72	33.78	33.83	24.90	25.40	22.60	1.58	1.33	5.63	35.07
195.40	34.00	34.10	34.19	21.90	21.60	22.50	1.77	1.22	5.82	34.36
246.20	33.64	33.73	33.84	20.00	19.90	19.50	1.86	1.24	5.95	34.34
309.60	33.47	33.57	33.67	17.10	17.70	18.00	1.82	1.76	6.09	35.54
373.10	33.77	33.89	34.02	15.90	16.10	17.60	1.46	1.95	6.45	34.85
436.50	33.15	33.35	33.54	17.60	17.20	17.60	1.15	1.54	6.98	34.71
500.00	32.49	32.80	33.14	22.50	20.60	20.80	1.83	1.81	7.28	33.90

