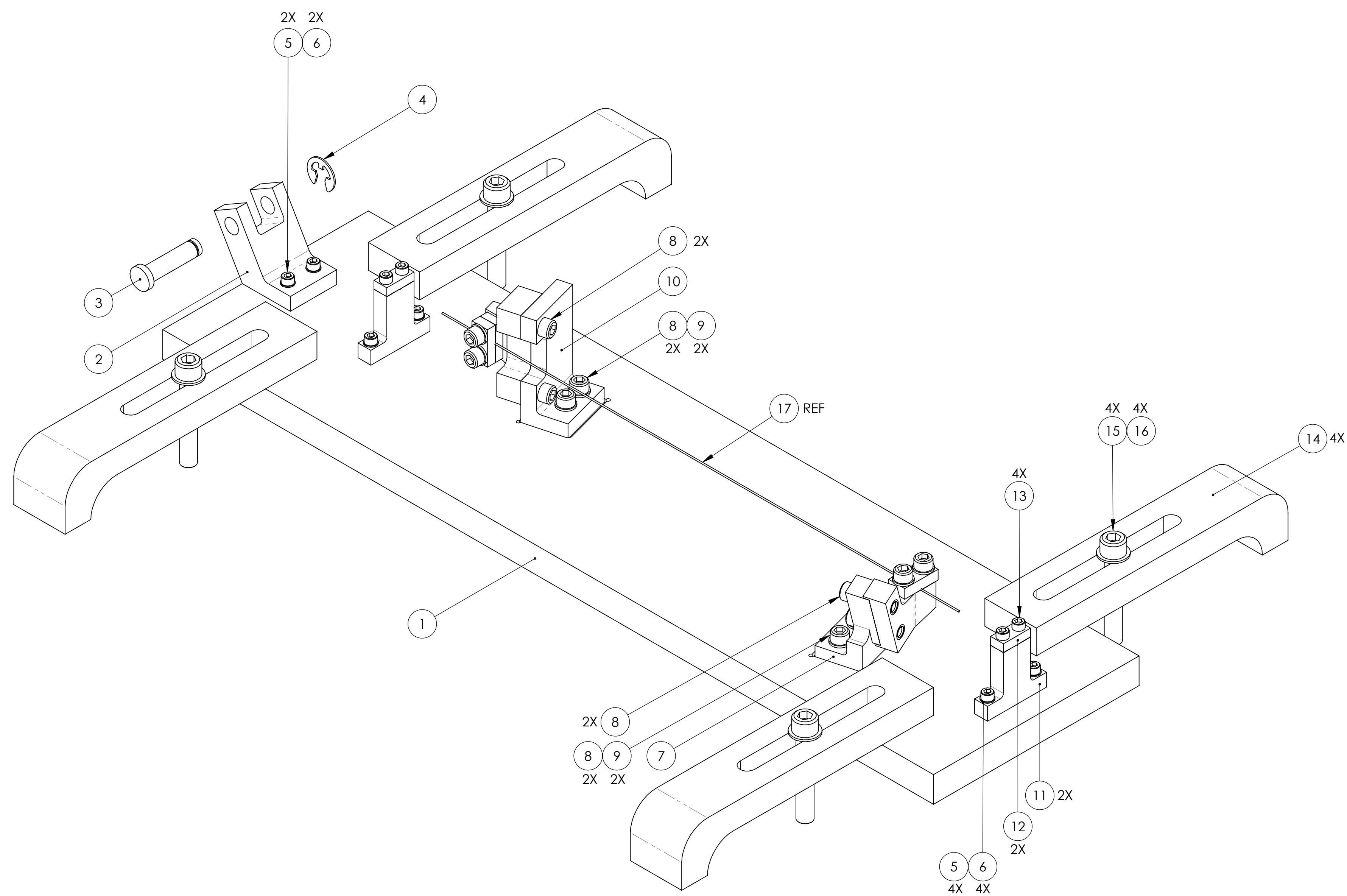


REV.	DATE	DCN #	DRAWING TREE #
v1	26 MAY 2009	E0900160	E080191
v2	21 JAN 2011	E1100057	E080191
-	-	-	-



ITEM NO.	PART NUMBER	DESCRIPTION	MATERIAL	REQ	SPARE	TOTAL
17	D070340	UPPER WIRE ASSEMBLY	N/A	REF	0	0
16	-	WASHER, FLAT, VENTED, 1/4 (U-C COMPONENTS P/N WFV-25 OR EQUIVALENT)	300 SSSL	4	1	5
15	-	SCREW, SOCKET HEAD CAP, 1/4-20 UNC-2A X 1.5 LONG	300 SSSL	4	1	5
14	D980184	LOS CLAMP, LONG	304, 316 OR 302 SSSL	4	0	4
13	-	SCREW, SOCKET HEAD CAP, #4-40 UNC-2A X 0.375 LONG	Ag-PLATED 300 SSSL	4	1	5
12	D020380	WIRE START CLAMP, OUTSIDE	304, 316 OR 302 SSSL	2	1	3
11	D0900603	WIRE START CLAMP, INSIDE	304, 316 OR 302 SSSL	2	1	3
10	D0900597	WIRE CLAMP MOUNT	6061-T6 Al	1	0	1
9	-	WASHER, FLAT, VENTED, #8 (U-C COMPONENTS P/N WFV-08 OR EQUIVALENT)	300 SSSL	4	1	5
8	-	SCREW, SOCKET HEAD CAP, #8-32 UNC-2A X 0.625 LONG	300 SSSL	8	2	10
7	D0900596	BLADE CLAMP MOUNT	6061-T6 Al	1	0	1
6	-	WASHER, FLAT, VENTED, #4 (U-C COMPONENTS P/N WFV-04 OR EQUIVALENT)	300 SSSL	6	2	8
5	-	SCREW, SOCKET HEAD CAP, #4-40 UNC-2A X 0.5 LONG	300 SSSL	6	2	8
4	98408A120	RETAINING RING (MCMaster-CARR P/N)	300 SSSL	1	1	2
3	92735A230	CLEVIS PIN (MCMaster-CARR P/N)	300 SSSL	1	1	2
2	D0900563	PIN SUPPORT, WIRE JIG	6061-T6 Al	1	0	1
1	D0900595	BASE PLATE	6061-T6 Al	1	0	1

NOTES AND TOLERANCES: (UNLESS OTHERWISE SPECIFIED)
 1. THIS JIG TO BE USED IN THE ASSEMBLY OF D070340 HLTS UPPER WIRE ASSEMBLY AS DESCRIBED IN E080208 HLTS ASSEMBLY SPECIFICATION.

MATERIAL N/A **FINISH** N/A μinch

LIGO CALIFORNIA INSTITUTE OF TECHNOLOGY
 MASSACHUSETTS INSTITUTE OF TECHNOLOGY

SYSTEM ADVANCED LIGO **SUB-SYSTEM** SUS

NEXT ASSY HLTS OVERALL ASSY AND FIXTURES

PART NAME UPPER WIRE JIG ASSY, HLTS

DESIGNER	D. BRIDGES	27 JAN 2011	SIZE	DWG. NO.	REV.
DRAFTER	D. BRIDGES	27 JAN 2011	D	D0900594	v2
CHECKER	B. MOORE	31 JAN 2011	SCALE: 1:1	PROJECTION:	SHEET 1 OF 1

D:\090594_Advanced_LIGO_SUS_HLTS_Upper_Wire_Jig_Assembly_Part_PDW_REV-V1-003_DRAWING_PDW_REV-V1-000