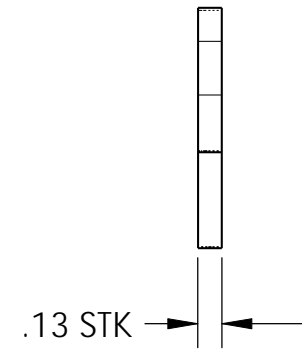
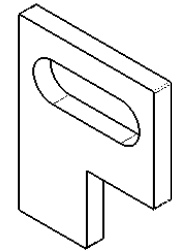
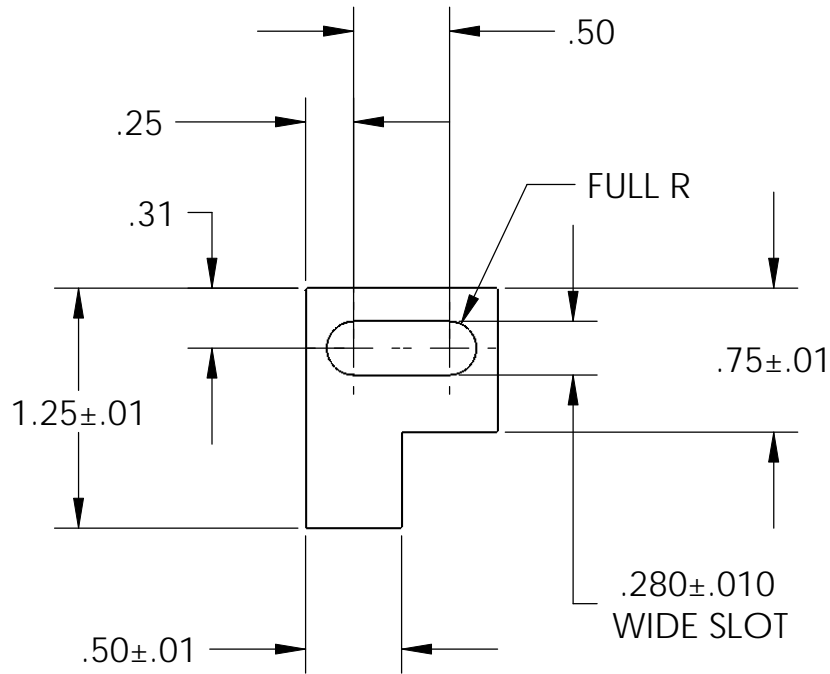


NOTES CONTINUED:

⑤ BAG ALL ITEMS INDIVIDUALLY AND TAG EACH BAG WITH THE PART NUMBER, REVISION, AND QUANTITY. EXAMPLE: DXXXXXX-VY, QTY: TBD.

REV.	DATE	DCN #	DRAWING TREE #
v1	16 APR 2009	E0900106	E0900052
-	-	-	-
-	-	-	-



NOTES AND TOLERANCES: (UNLESS OTHERWISE SPECIFIED)

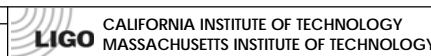
DIMENSIONS ARE IN INCHES

TOLERANCES:
XX $\pm .05$
XXX $\pm .005$

ANGULAR $\pm 0.5^\circ$

1. INTERPRET DRAWING PER ASME Y14.5-1994.
2. REMOVE ALL SHARP EDGES, R.02 MIN.
3. DO NOT SCALE FROM DRAWING.
4. ALL MACHINING FLUIDS SHALL BE WATER SOLUBLE AND FREE OF SULFUR, CHLORINE AND SILICONE, SUCH AS CINCINNATI MILACRON'S CIMTECH 410.

MATERIAL 6061-T6 Al FINISH 63 μ inch



SYSTEM ADVANCED LIGO SUB-SYSTEM SUS

NEXT ASSY D0900643

PART NAME SUPPORT TAB, OMC LIFTING JACK

DESIGNER K. MAILAND 01 JUN 2008 SIZE DWG. NO. D0900591 REV. v1

DRAFTER M. MEYER 16 APR 2009
CHECKER D. BRIDGES 16 APR 2009
APPROVAL

SCALE: 1:2 PROJECTION: SHEET 1 OF 1