

**NOTES CONTINUED:**

5. SCRIBE, ENGRAVE (A VIBRATORY TOOL MAY BE USED), LASER MARK OR MECHANICALLY STAMP (NO INKS OR DYES) DRAWING PART NUMBER, REVISION (AND VARIANT OR "TYPE" IF APPLICABLE) ON NOTED SURFACE OF PART FOLLOWED ON THE NEXT LINE WITH A THREE DIGIT SERIAL NUMBER. SERIAL NUMBERS START AT 001 FOR THE FIRST ARTICLE AND PROCEED CONSECUTIVELY. USE MINIMUM 0.12" HIGH CHARACTERS, UNLESS THE SIZE OF THE PART DICTATES SMALLER CHARACTERS. EXAMPLE: DXXXXXX-VY, TYPE-XX, S/N XXX

6. APPROXIMATE WEIGHT = 0.41 LB.

7. ALL PARTS SHALL BE MANUFACTURED IN ACCORDANCE WITH LIGO SPECIFICATION E0900364 AND E0900023. E0900023 TAKES PRECEDENCE

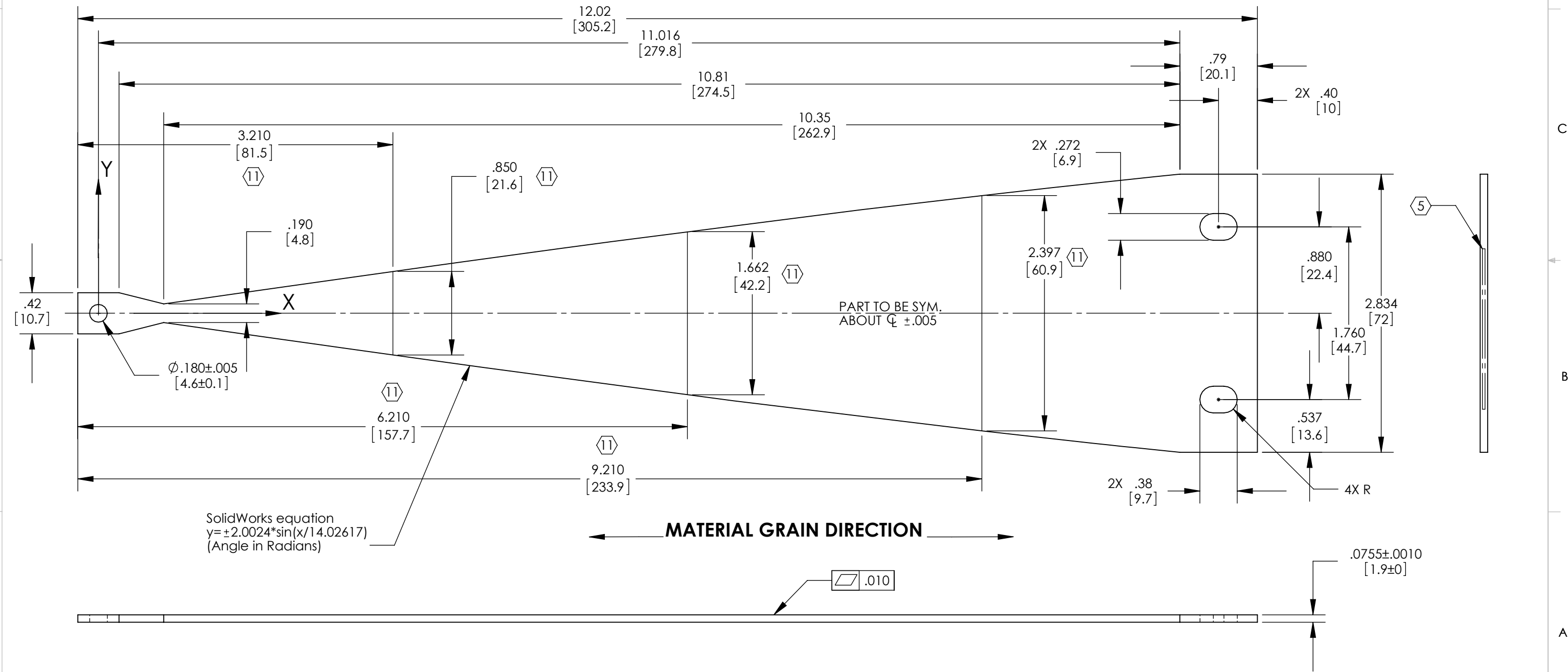
8. ALL MATERIAL IS TO BE VIRGIN MATERIAL (i.e. NO WELD REPAIRS, PLUGS OR RECYCLED MATERIAL). NO REPAIRS SHALL BE MADE UNLESS APPROVED IN ADVANCE, AND IN WRITING, BY LIGO LABORATORY. REFER TO LIGO-E0900364.

9. FABRICATE PER BLADE PROCESS SPECIFICATION LIGO-E0900023.

10. PART TO BE HEAT TREATED AND PLATED ON ACCORDANCE WITH LIGO SPECIFICATION E0900023.

11 INDICATED DIMENSIONS ARE INSPECTION DIMENSIONS TAKEN AT INDICATED LOCATIONS.

REV.	DATE	DCN #	DRAWING TREE #
v2	01 OCT 2010	-	
v3	04 JAN 2011	-	
v4	15 MAR 2013	E1300184	
v5	24 MAY 2013	E1300184	



**NOTES AND TOLERANCES: (UNLESS OTHERWISE SPECIFIED)**

DIMENSIONS ARE IN INCHES.

TOLERANCES:  
 .XX ± .01  
 .XXX ± .005  
 ANGULAR ± .5°

1. INTERPRET DRAWING PER ASME Y14.5-1994.  
 2. REMOVE ALL SHARP EDGES, .005" TO .015"  
 3. DO NOT SCALE FROM DRAWING.  
 4. ALL MACHINING FLUIDS SHALL BE WATER SOLUBLE AND FREE OF SULFUR, CHLORINE AND SILICONE, SUCH AS CINCINNATI MILACRON'S CIMTECH 410. REFER TO LIGO ACCEPTABLE COOLANT LIST E0900237.

**MATERIAL**  
MARAGING STEEL C250

**FINISH**  
63 μinch

**LIGO** CALIFORNIA INSTITUTE OF TECHNOLOGY  
 MASSACHUSETTS INSTITUTE OF TECHNOLOGY

**SYSTEM**  
ADVANCED LIGO

**SUB-SYSTEM**  
AOS

**NEXT ASSY**  
D0900570

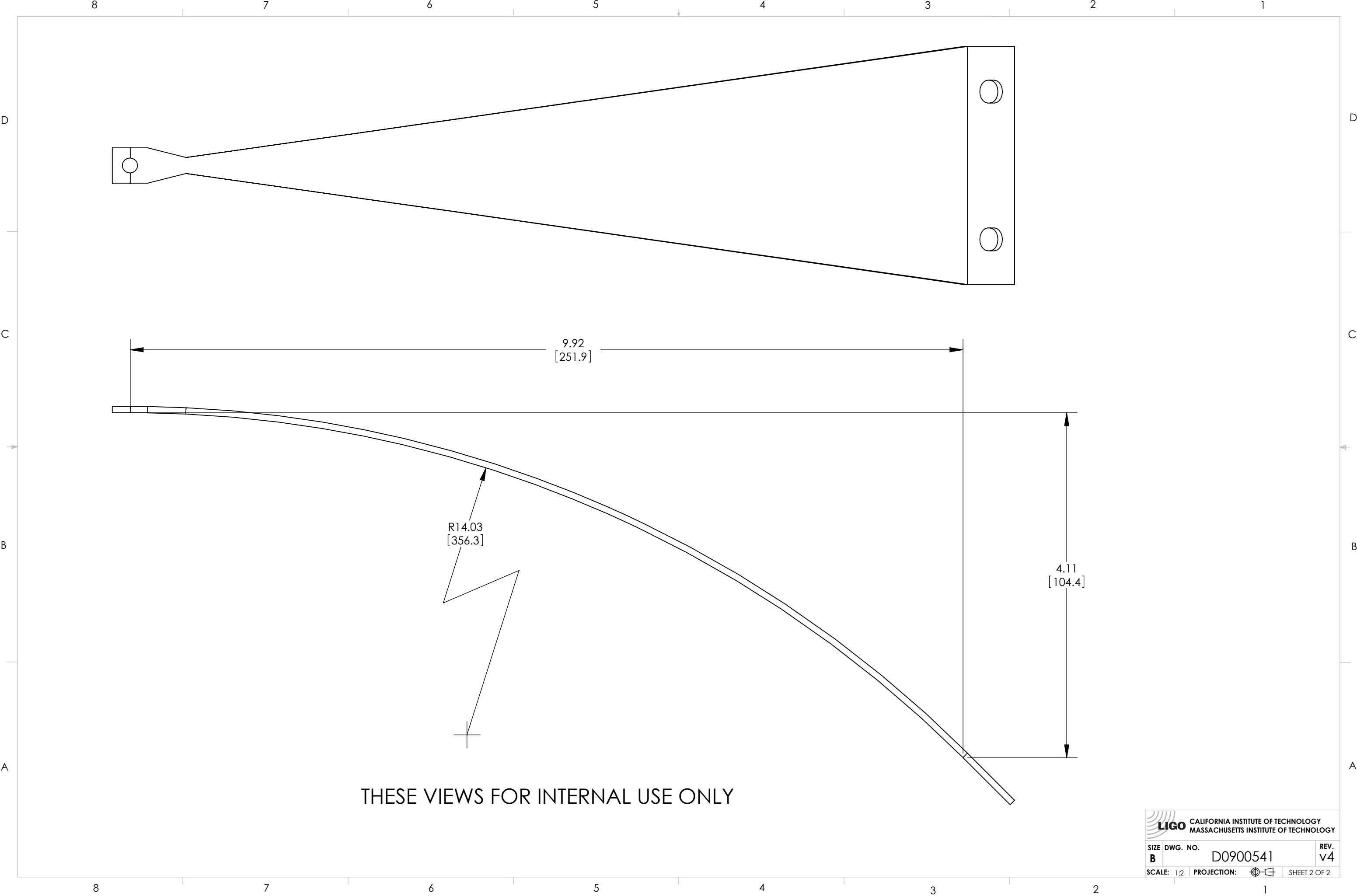
**PART NAME**  
FI UPPER BLADE

DESIGNER	DRAWN	CHECKER	APPROVAL	DATE	SIZE	DWG. NO.	REV.
N.Nguyen	N.Nguyen	K. Malland	C. Torrie	14 Jul 2009	B	D0900541	v5


SCALE: 1:1 PROJECTION: SHEET 1 OF 2

D0900541\_AdlLIGO\_AOS\_D0900570\_Faraday Isolator Upper Blade, PART PDM REV: X-005, DRAWING PDM REV: X-013

D0900541\_AcLIGO\_AOS\_D0900570\_Faraday Isolator Upper Blade, PART PDM REV: X-005, DRAWING PDM REV: X-013



THESE VIEWS FOR INTERNAL USE ONLY

 <b>CALIFORNIA INSTITUTE OF TECHNOLOGY</b> <b>MASSACHUSETTS INSTITUTE OF TECHNOLOGY</b>		
SIZE	DWG. NO.	REV.
<b>B</b>	D0900541	v4
SCALE: 1:2	PROJECTION:	SHEET 2 OF 2