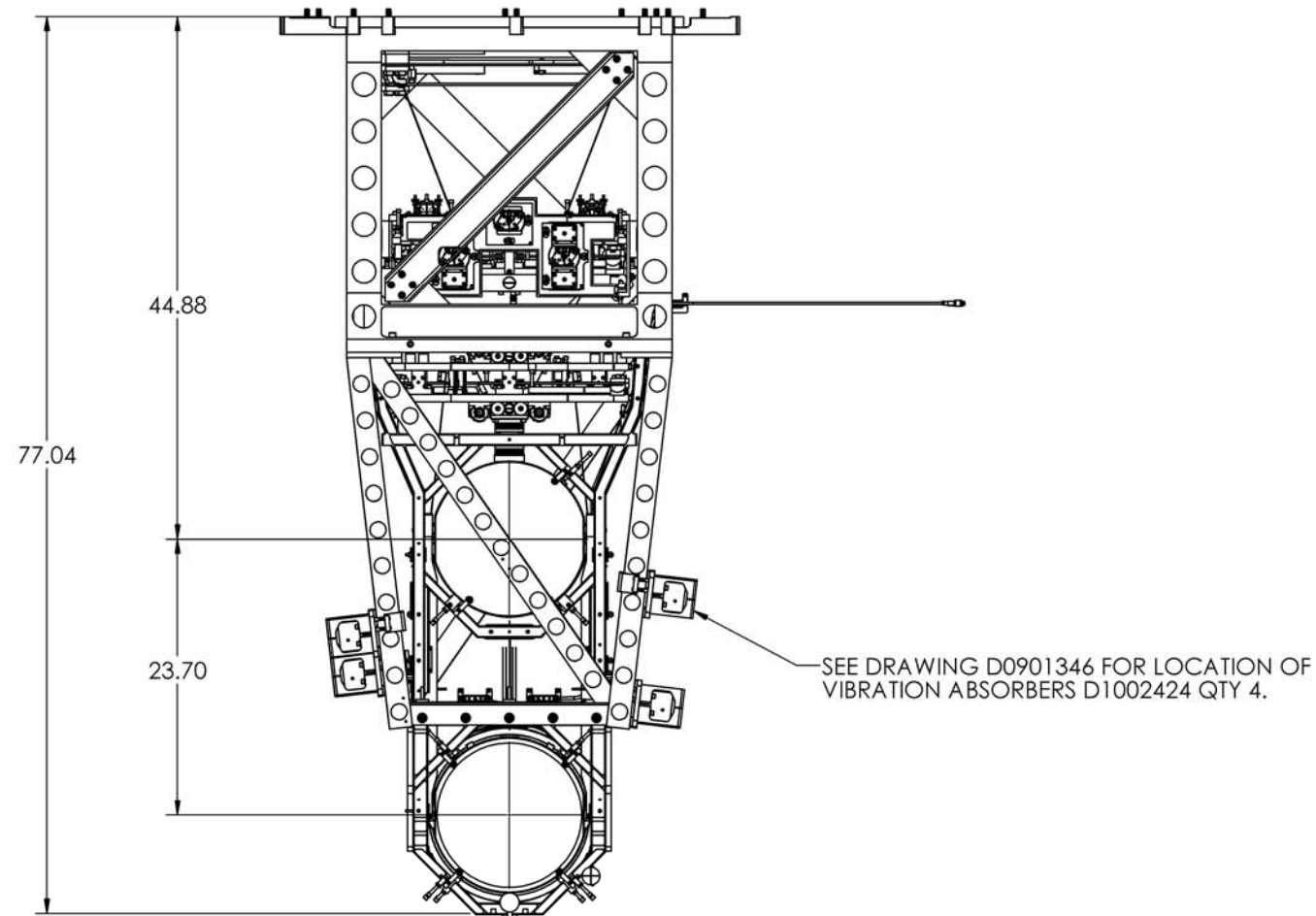
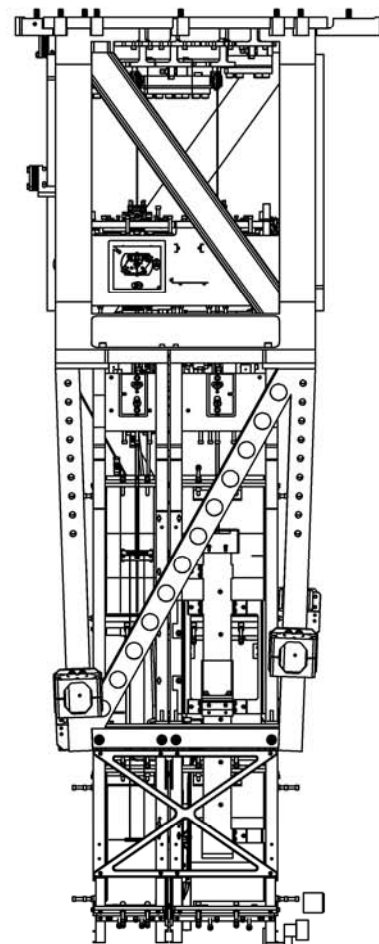
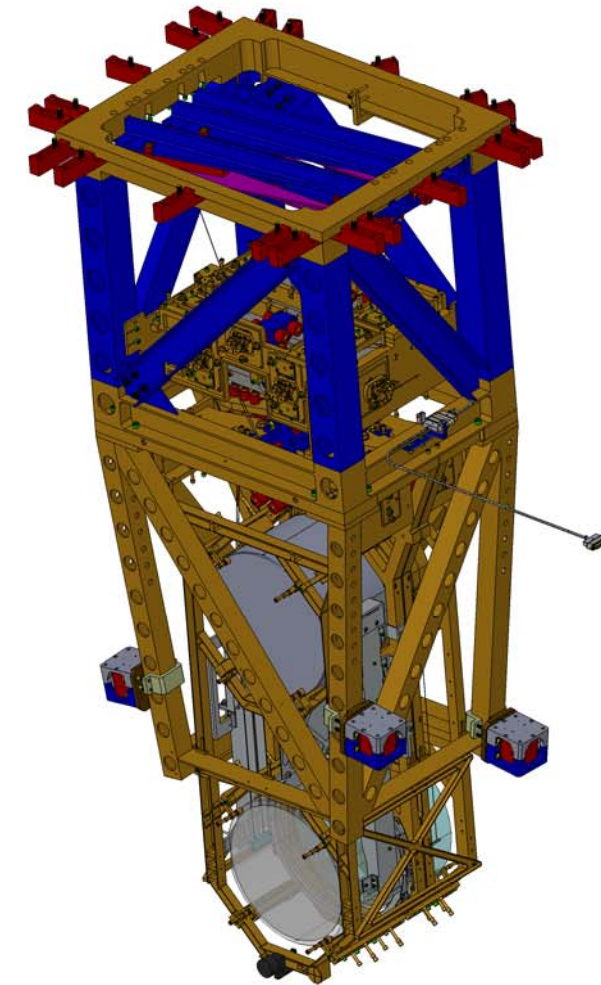
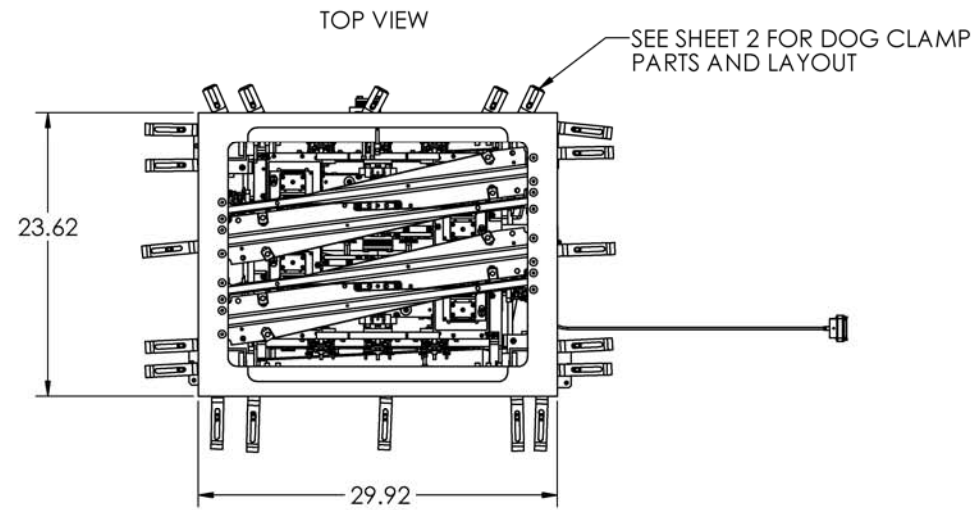


REV.	DATE	DCN #	DRAWING TREE #
-	-	-	-
-	-	-	-
-	-	-	-



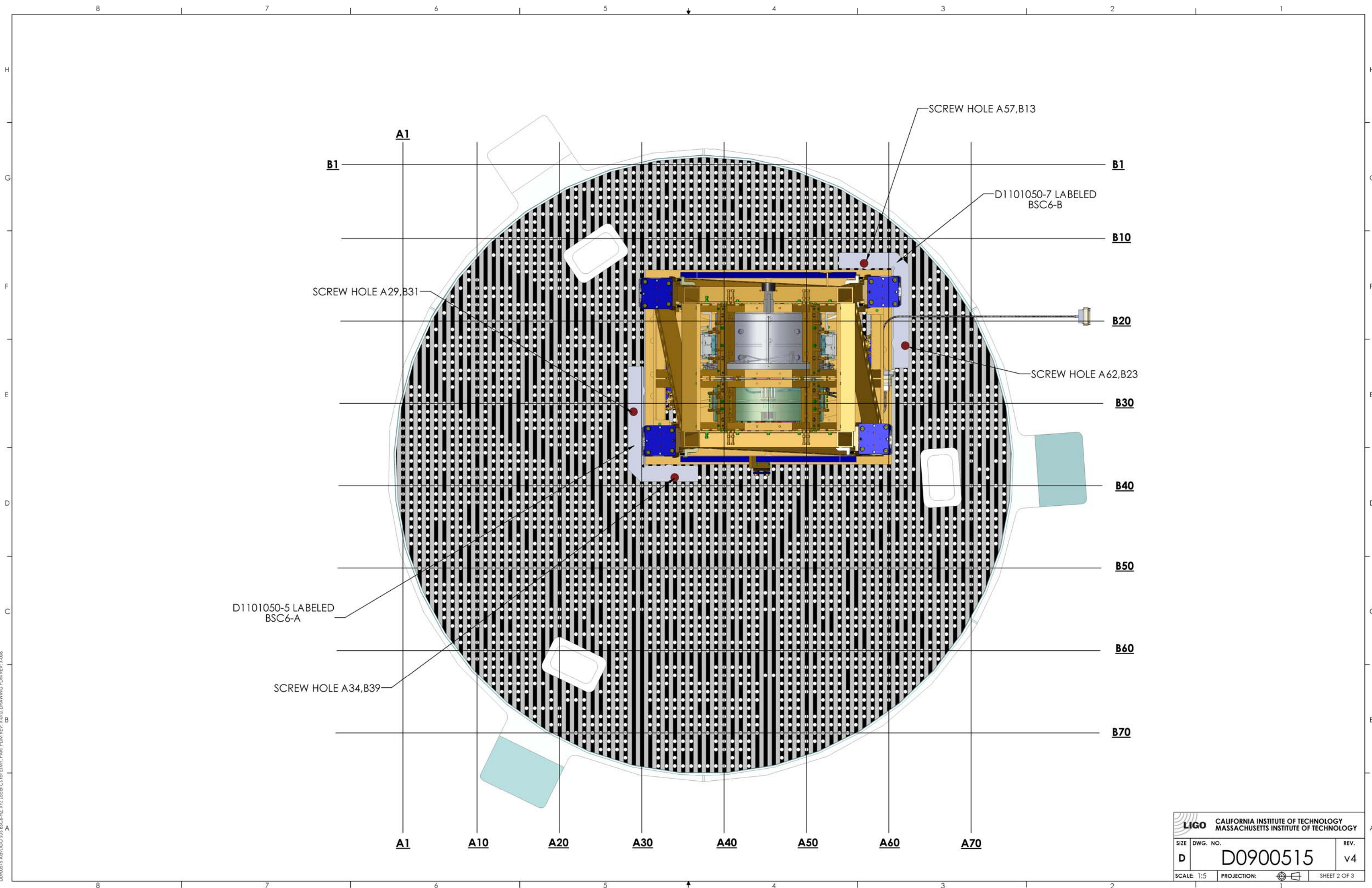
ITEM NO.	PART NUMBER	DESCRIPTION	MATERIAL	QTY.
5	3AJ1.500-12CL	3AJ1.500-12CL	450 SSSL	20
4	D1100785-620	ALIGO, SUS, QUAD, NITRONIC WASHER, FLAT	NITRONIC 60	20
3	D1003190	ALIGO QUAD SHORTER DOG CLAMP	304 SSSL	5
2	D070056	ALIGO, SUS, QUAD N-PTYPE, QUAD DOG CLAMP	304 SSSL	15
1	D0901346	ALIGO SUS QUAD ASSEMBLY TOP LEVEL TD-1084-090		1

NOTES AND TOLERANCES: (UNLESS OTHERWISE SPECIFIED)	
1. INTERPRET DRAWING PER ASME Y14.5-1994. 2. REMOVE ALL SHARP EDGES, .005-.015. FOR MACHINED PARTS. ROUND ALL EDGES APPROXIMATELY R.02 FOR SHEET METAL PARTS. 3. DO NOT SCALE FROM DRAWING. 4. ALL MACHINING FLUIDS MUST BE FULLY SYNTHETIC, FULLY WATER SOLUBLE AND FREE OF SULFUR, SILICONE, AND CHLORINE.	
DIMENSIONS ARE IN INCHES	
TOLERANCES: .XX ± .03 .XXX ± .010	
ANGULAR ± .5°	
MATERIAL	FINISH
SEE BOM	N/A μinch

CALIFORNIA INSTITUTE OF TECHNOLOGY MASSACHUSETTS INSTITUTE OF TECHNOLOGY	
SYSTEM	SUB-SYSTEM
ADVANCED LIGO	SUS
NEXT ASSY	
D0900512	

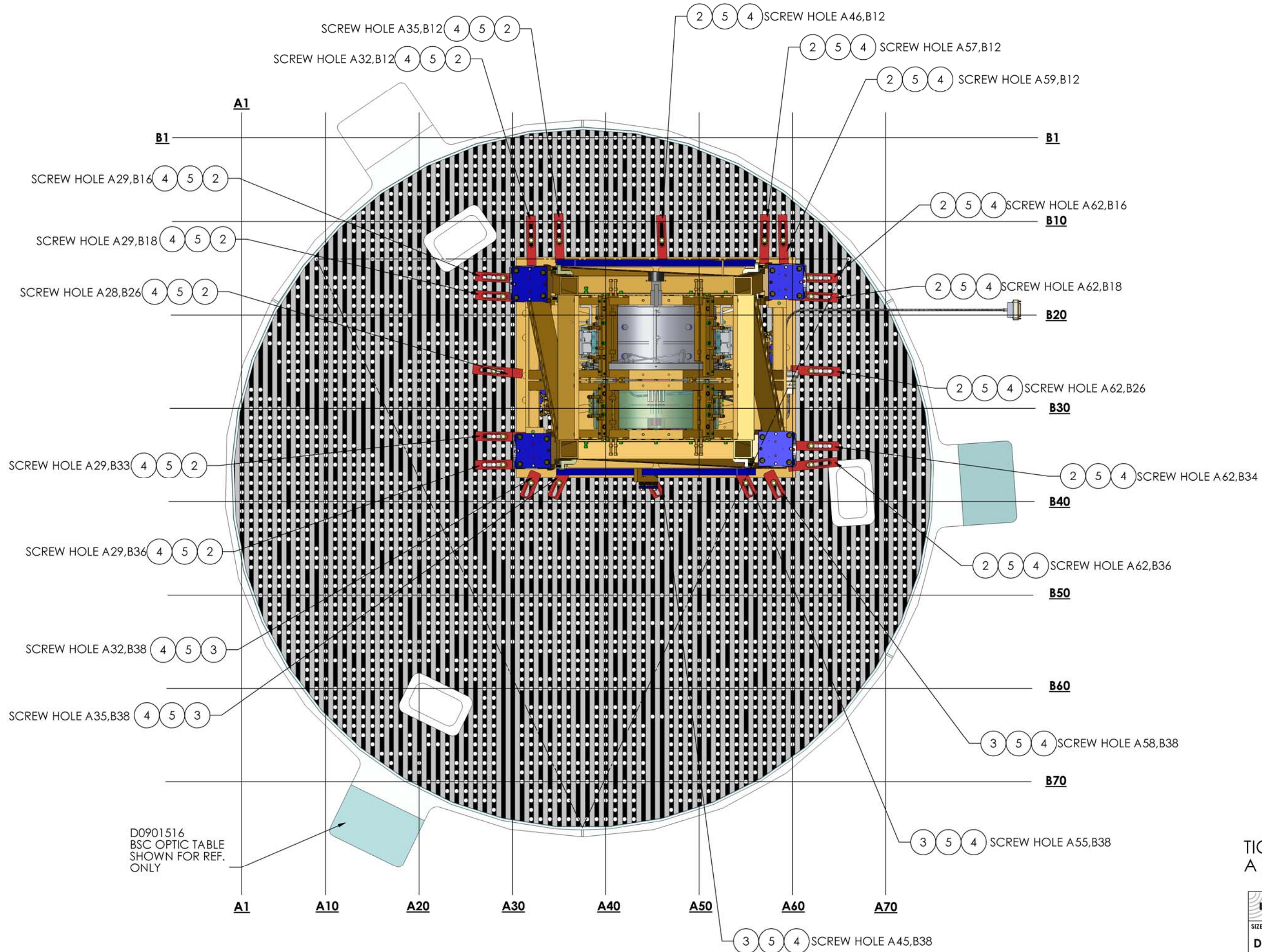
PART NAME			
AdvLIGO SUS BSC6-H2, XYZ Local CS for ETMY			
DESIGNER	J.ODELL	9 Aug. 2009	SIZE
DRAFTER	M.HILLARD	30 June 2011	DWG. NO.
CHECKER	E.CHAVEZ	30 June 2011	D0900515
APPROVAL	C.TORRIS	30 June 2011	SCALE: 1:8
PROJECTION:		SHEET 1 OF 3	

D0900515-AdvLIGO SUS BSC6-H2, XYZ Local CS for ETMY - PART PDM REV: X.070, DRAWING PDM REV: X.006



LIGO CALIFORNIA INSTITUTE OF TECHNOLOGY MASSACHUSETTS INSTITUTE OF TECHNOLOGY		REV.
SIZE	DWG. NO.	v4
D	D0900515	
SCALE: 1:5	PROJECTION:	SHEET 2 OF 3

D:\0900515\A4\LOGO_SUE_BSC6-H2_XTL\loc\CI for EIM\PART_PDM_REV\X.070_DRAWING_PDM_REV.X-006



D0901516
BSC OPTIC TABLE
SHOWN FOR REF.
ONLY

TIGHTEN ALL SCREWS TO
A TORQUE OF 300 IN/LB

LIGO CALIFORNIA INSTITUTE OF TECHNOLOGY MASSACHUSETTS INSTITUTE OF TECHNOLOGY		REV.
SIZE	DWG. NO.	REV.
D	D0900515	v4
SCALE: 1:5	PROJECTION:	SHEET 3 OF 3