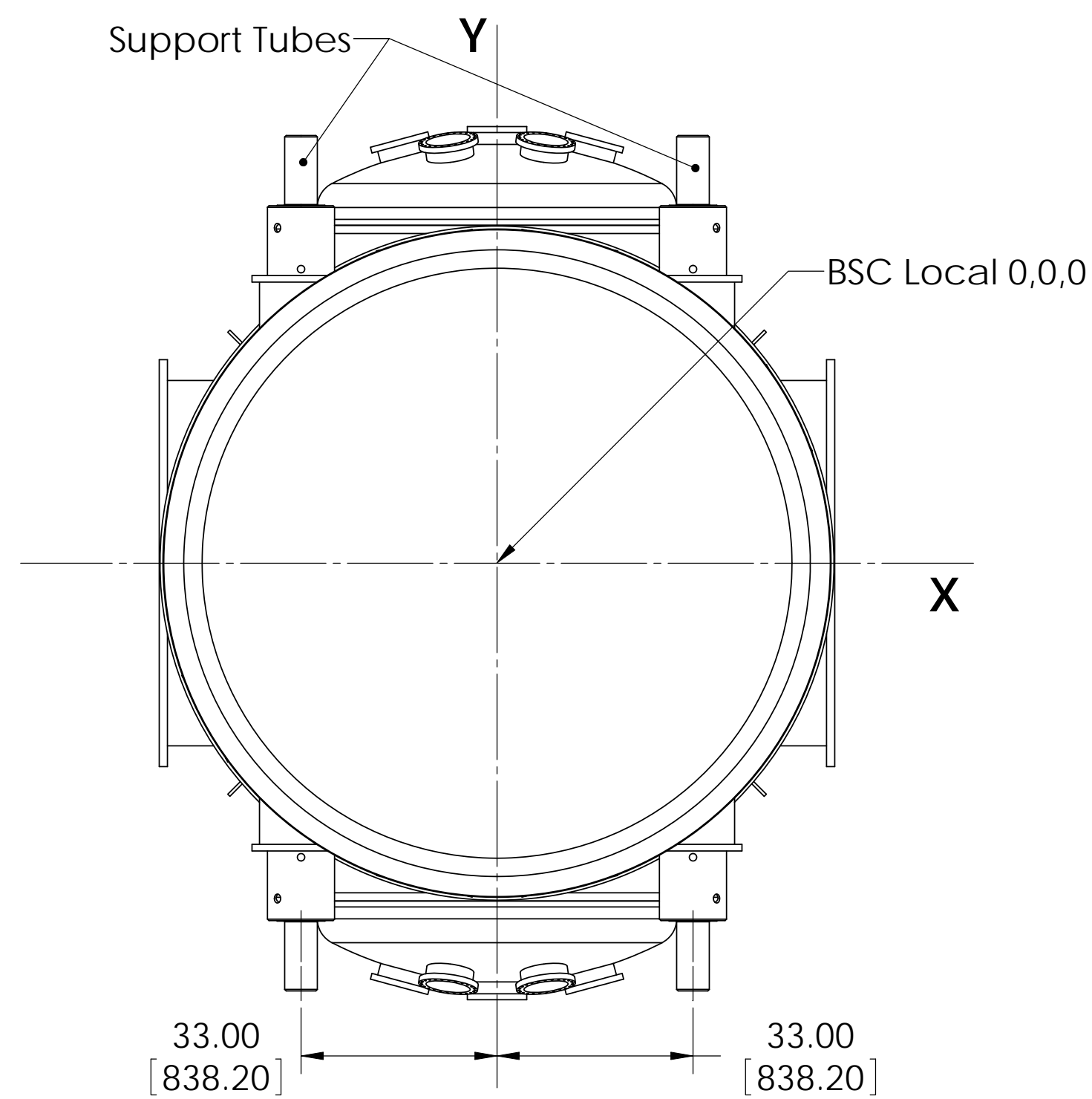
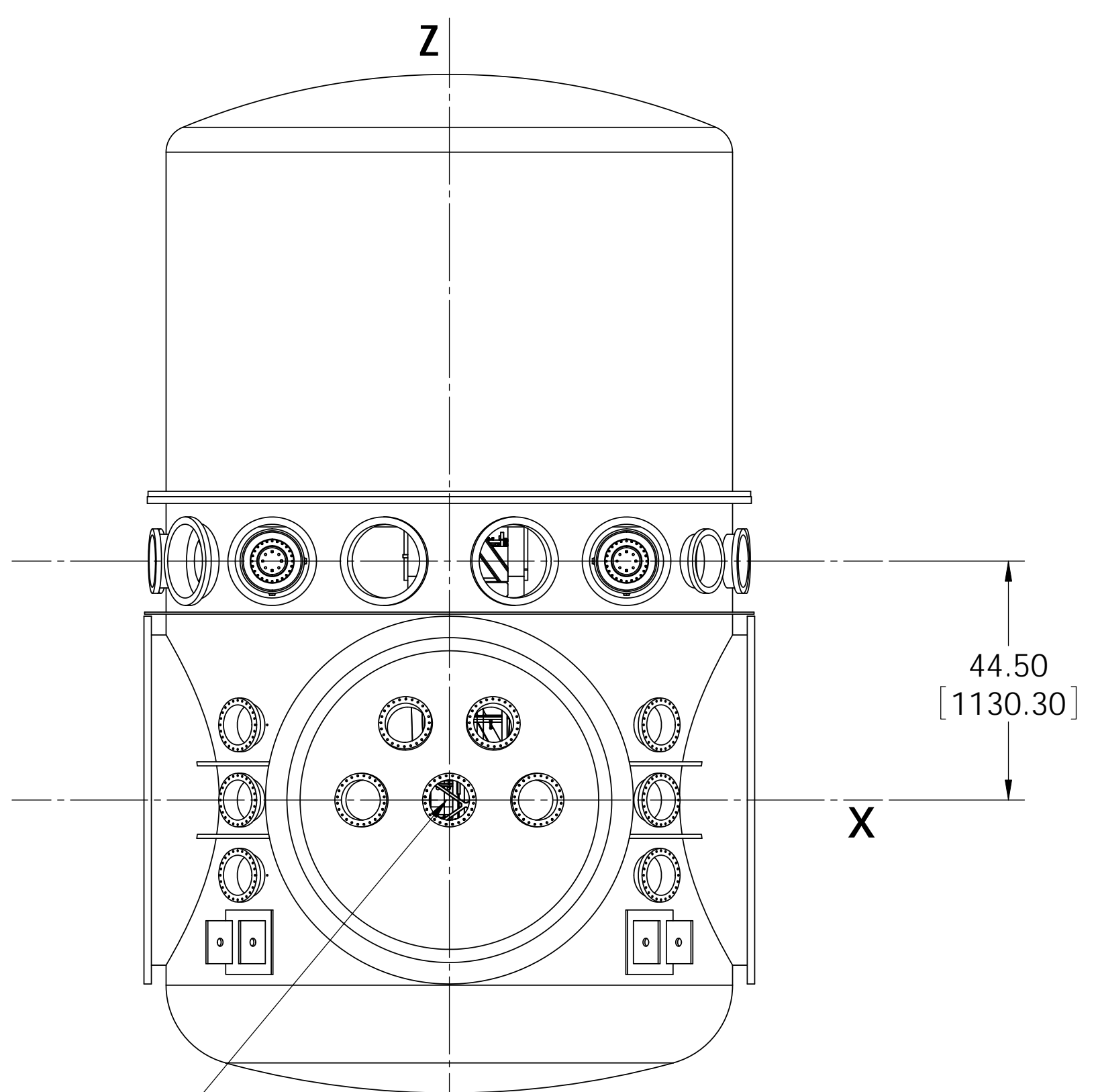


NOTES CONTINUED:  
 (5) Reference DCC # 1010076-02

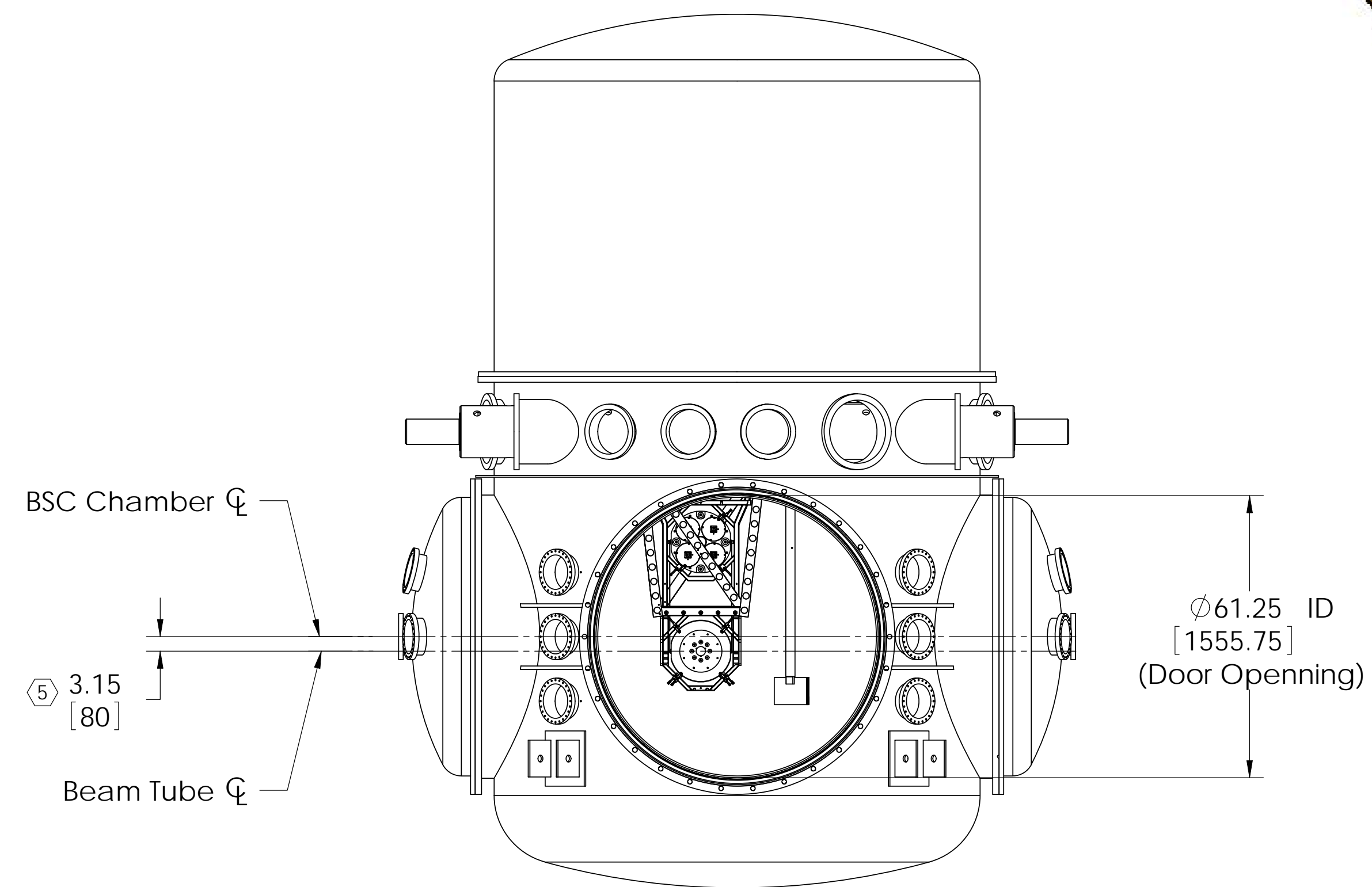
REV.	DATE	DCN #	DRAWING TREE #
-	-	-	-
-	-	-	-
-	-	-	-



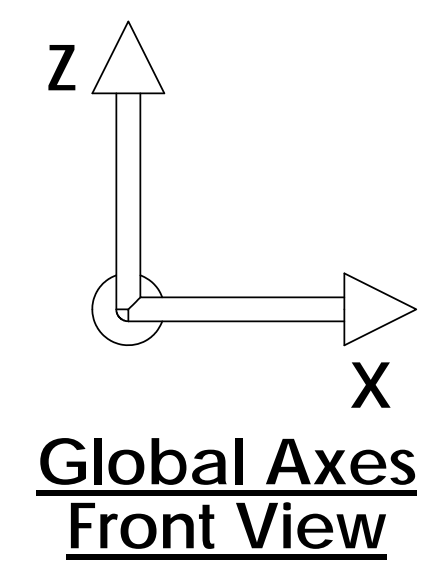
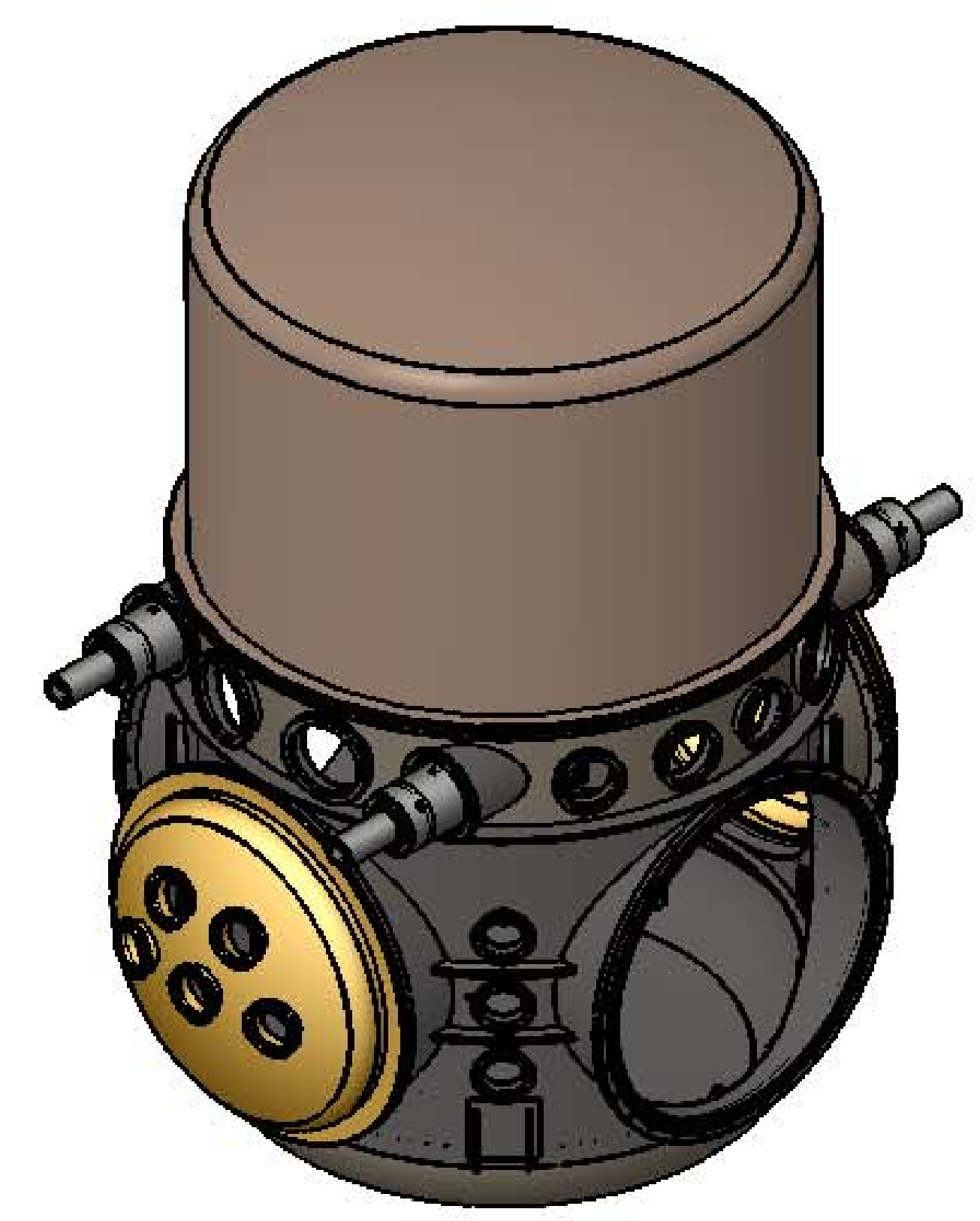
**TOP VIEW**



**FRONT VIEW**



**RIGHT SIDE VIEW**

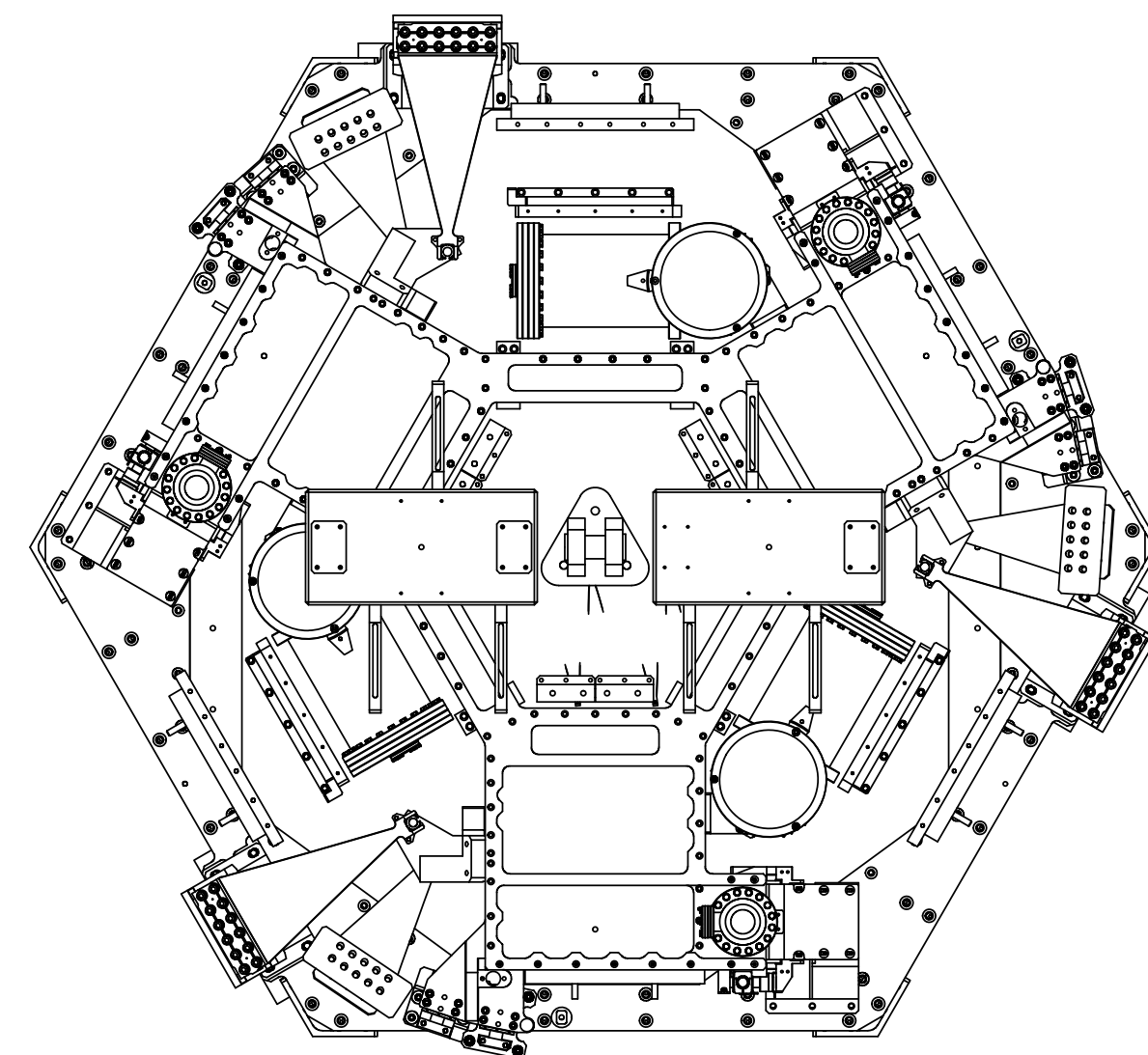


BSC3-L1 GLOBAL COORDINATES (mm)	
X	4580.0
Y	0.0
Z	0.0

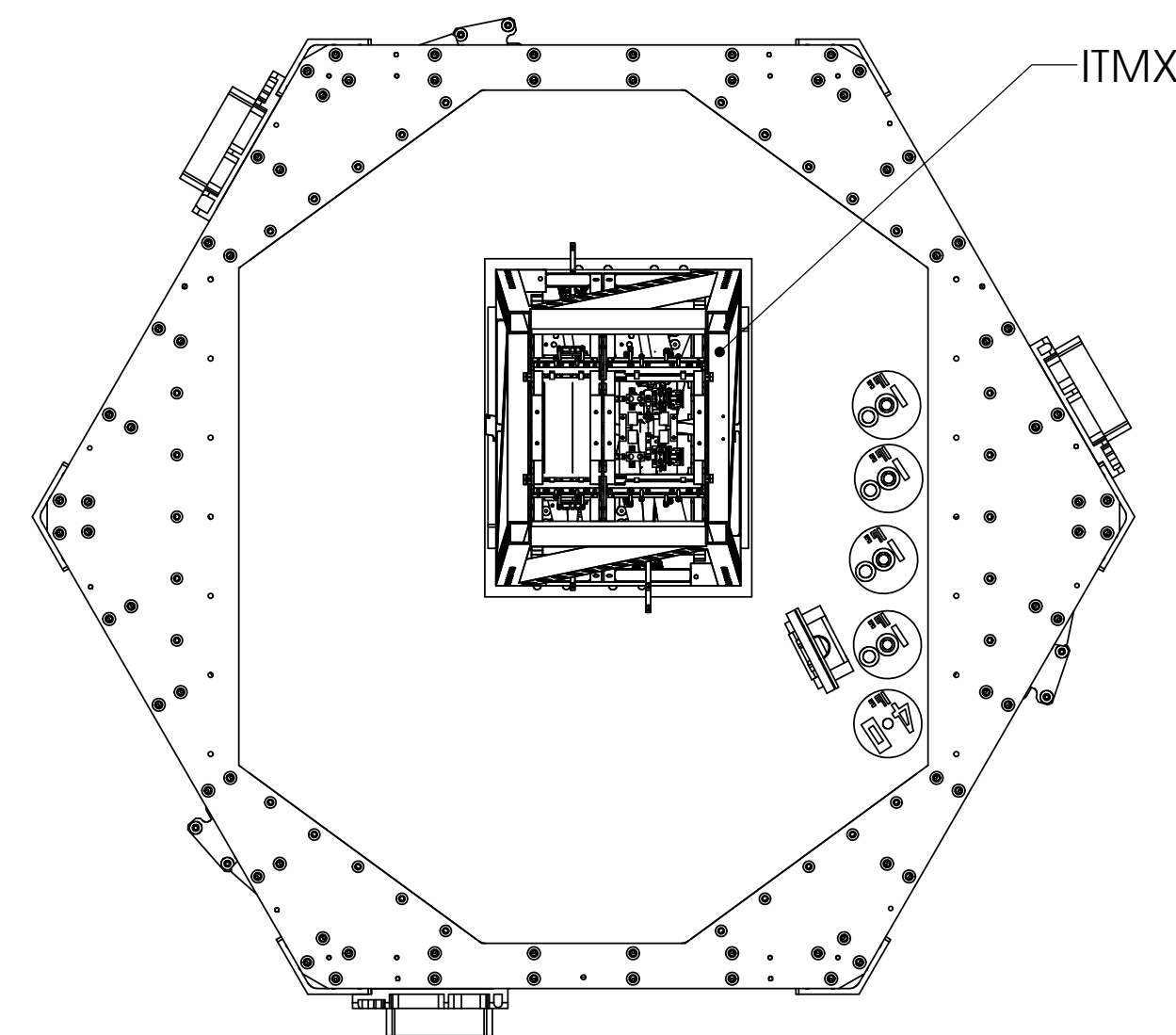
DIMENSIONS ARE IN INCHES TOLERANCES: .XX ± 0.01 .XXX ± 0.005 ANGULAR ± 0.5°		NOTES AND TOLERANCES: (UNLESS OTHERWISE SPECIFIED) 1. INTERPRET DRAWING PER ASME Y14.5-1994. 2. REMOVE ALL SHARP EDGES, R.02 MIN. 3. DO NOT SCALE FROM DRAWING. 4. ALL MACHINING FLUIDS SHALL BE WATER SOLUBLE AND FREE OF SULFUR, CHLORINE AND SILICONE, SUCH AS CINCINNATI MILACRON'S CIMTECH 410.		CALIFORNIA INSTITUTE OF TECHNOLOGY MASSACHUSETTS INSTITUTE OF TECHNOLOGY		PART NAME <b>BSC3-L1 Top Level Chamber Assembly, Fully Defined</b>	
MATERIAL --		FINISH -- $\mu$ inch		SYSTEM <b>ADVANCED LIGO</b>		SUB-SYSTEM <b>SUS</b>	
NEXT ASSY		DESIGNER DRAFTER CHECKER APPROVAL		SIZE DWG. NO. <b>D D0900492</b>		REV. v2	
SCALE: 1:32		PROJECTION:				SHEET 1 OF 4	

NOTES CONTINUED:  
 5 Reference DCC # 1010076-02

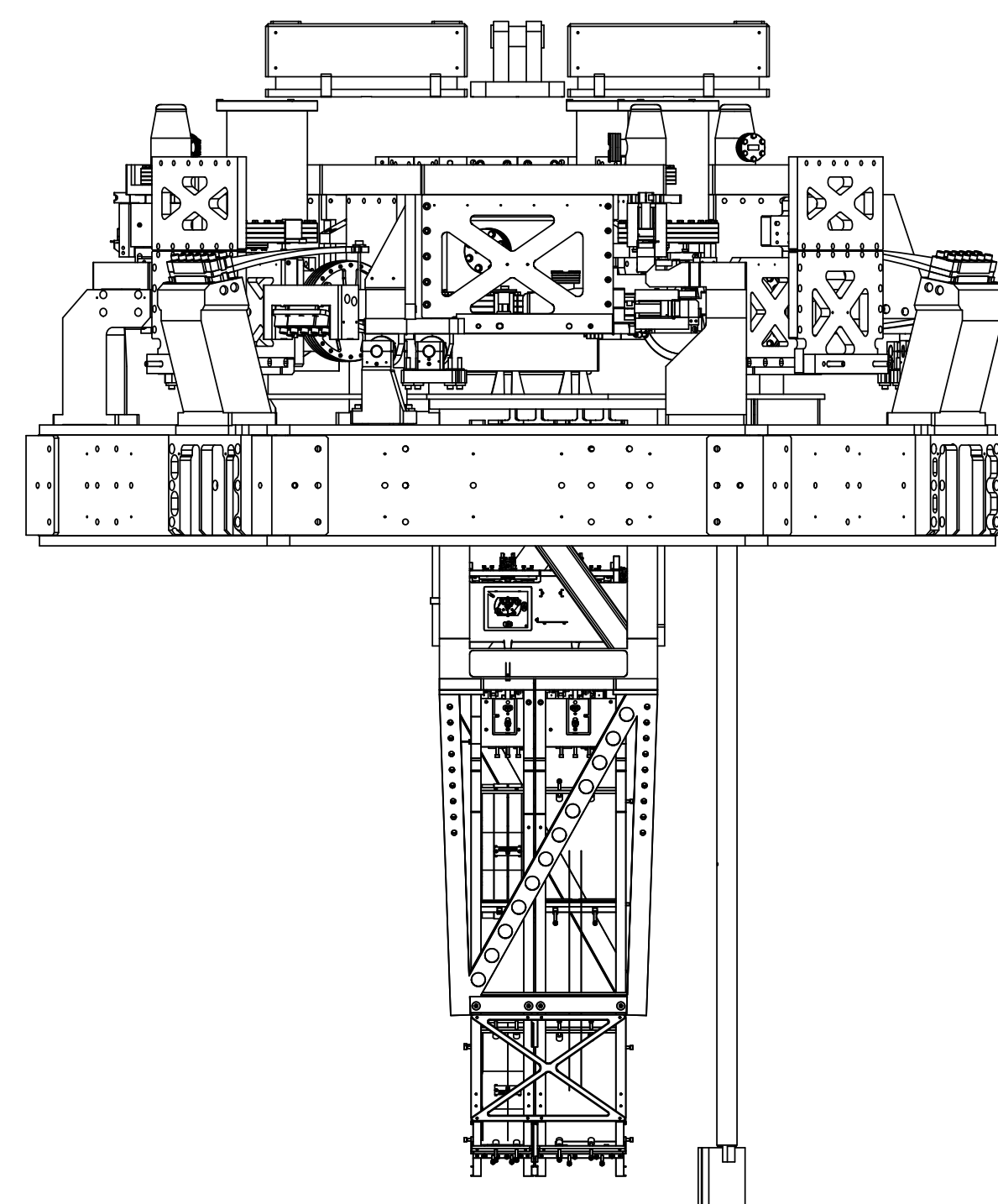
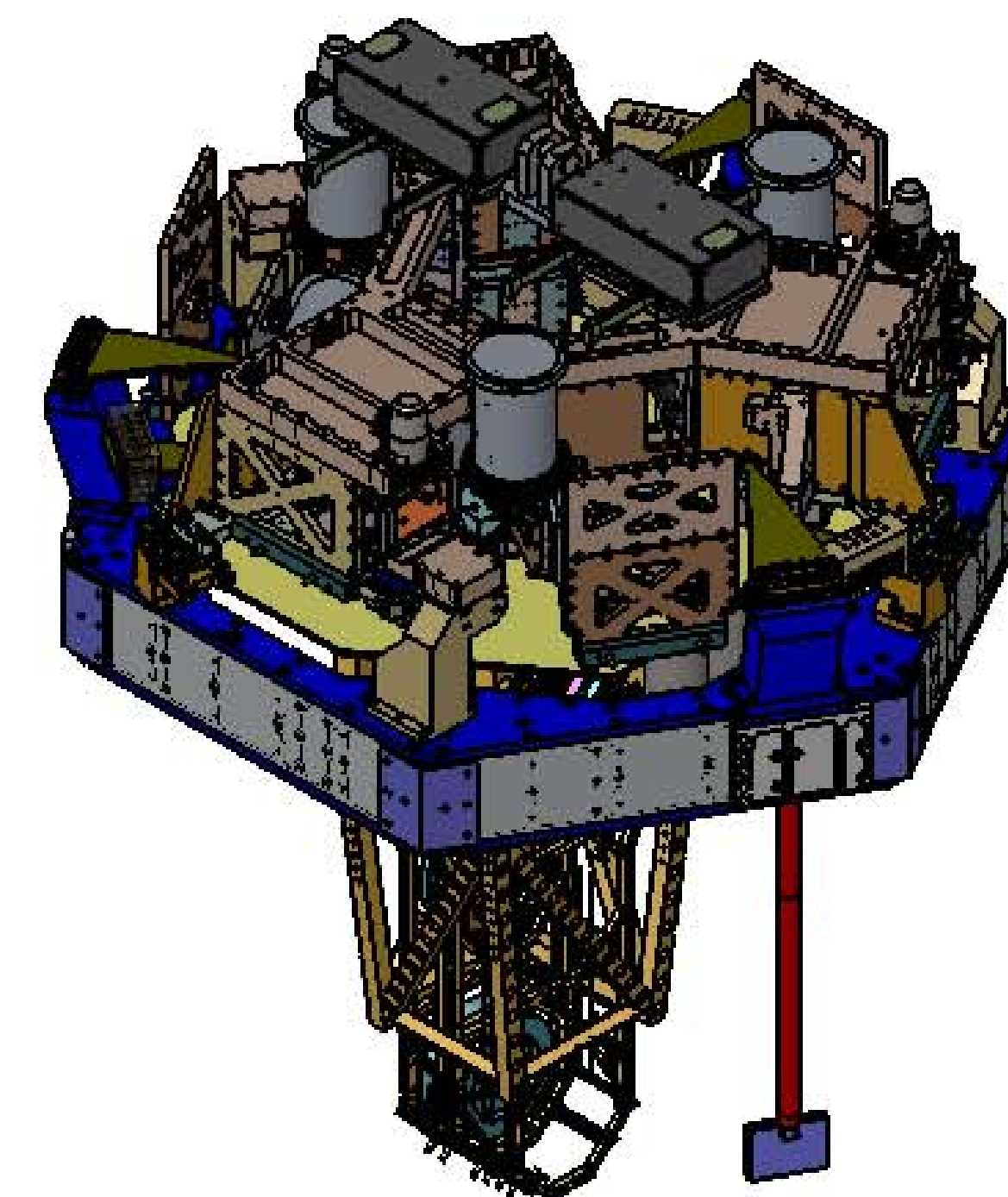
REV.	DATE	DCN #	DRAWING TREE #
-	-	-	-
-	-	-	-
-	-	-	-



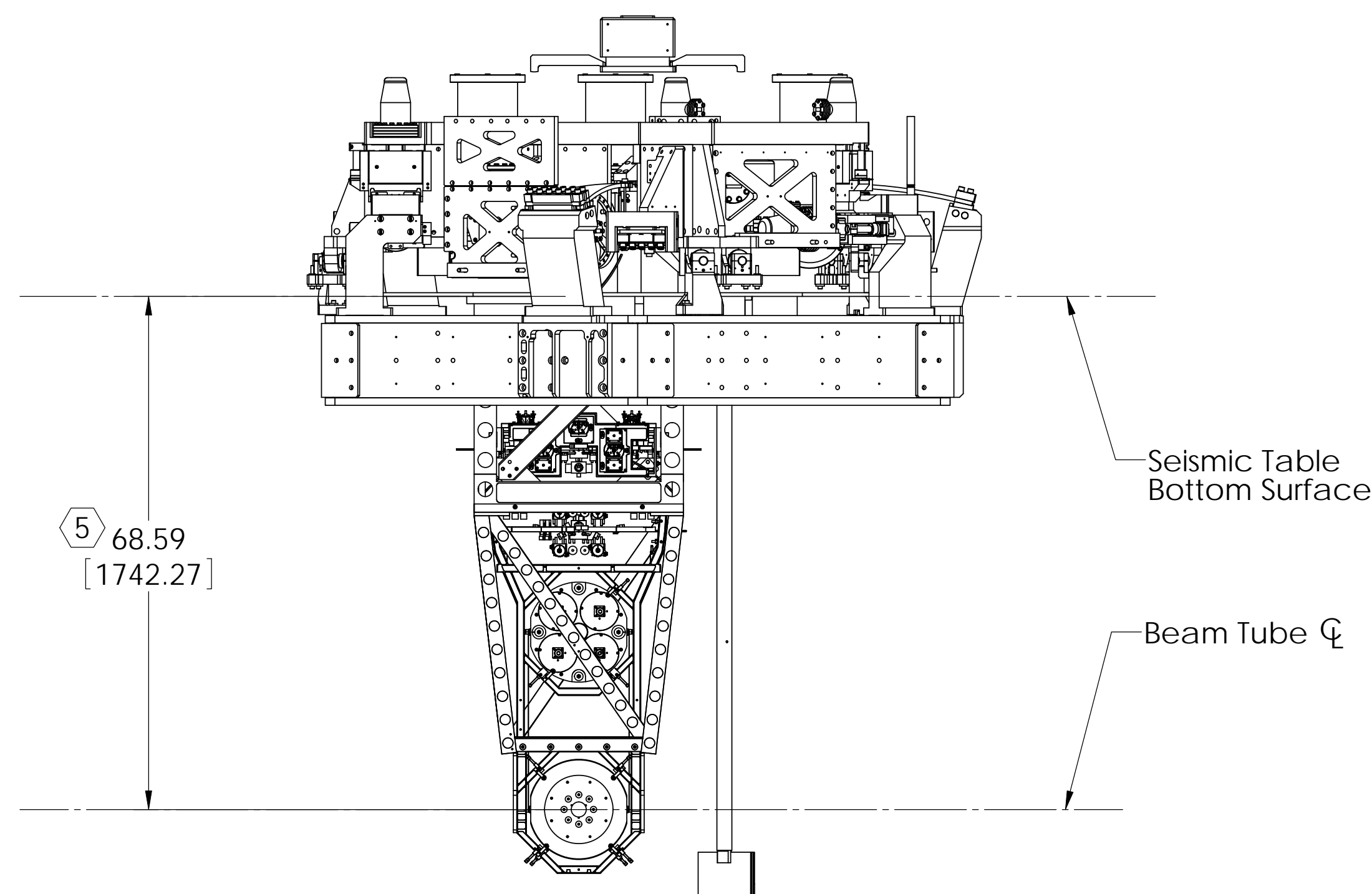
**TOP VIEW**



**BOTTOM VIEW**



**FRONT VIEW**



**RIGHT SIDE VIEW**

<b>BSC3-L1</b>	
GLOBAL COORDINATES (mm)	
X	4580.0
Y	0.0
Z	0.0

NOTES AND TOLERANCES: (UNLESS OTHERWISE SPECIFIED)	
1. INTERPRET DRAWING PER ASME Y14.5-1994. 2. REMOVE ALL SHARP EDGES, R.02 MIN. 3. DO NOT SCALE FROM DRAWING. 4. ALL MACHINING FLUIDS SHALL BE WATER SOLUBLE AND FREE OF SULFUR, CHLORINE AND SILICONE, SUCH AS CINCINNATI MILACRON'S CIMTECH 410.	
DIMENSIONS ARE IN INCHES	
TOLERANCES: .XX ± 0.01 .XXX ± 0.005	
ANGULAR ± 0.5°	
MATERIAL	FINISH
--	-- μinch

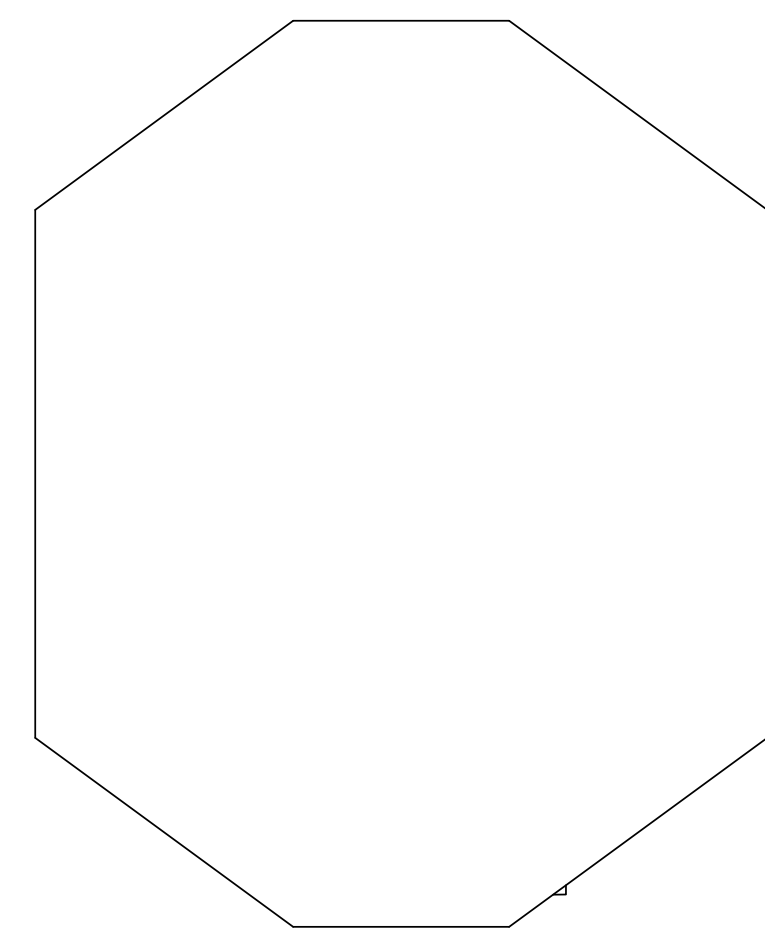
CALIFORNIA INSTITUTE OF TECHNOLOGY MASSACHUSETTS INSTITUTE OF TECHNOLOGY	
SYSTEM	SUB-SYSTEM
ADVANCED LIGO	SUS
NEXT ASSY	

PART NAME		BSC3-L1 Top Level Chamber Assembly, Fully Defined	
DESIGNER	ED CHAVEZ	DATE	27 JUL 2009
CHECKER		SCALE	1:32
APPROVAL		PROJECTION	
SIZE	DWG. NO.	REV.	
D	D0900492	v2	
SCALE: 1:32		PROJECTION:	
		SHEET 2 OF 4	

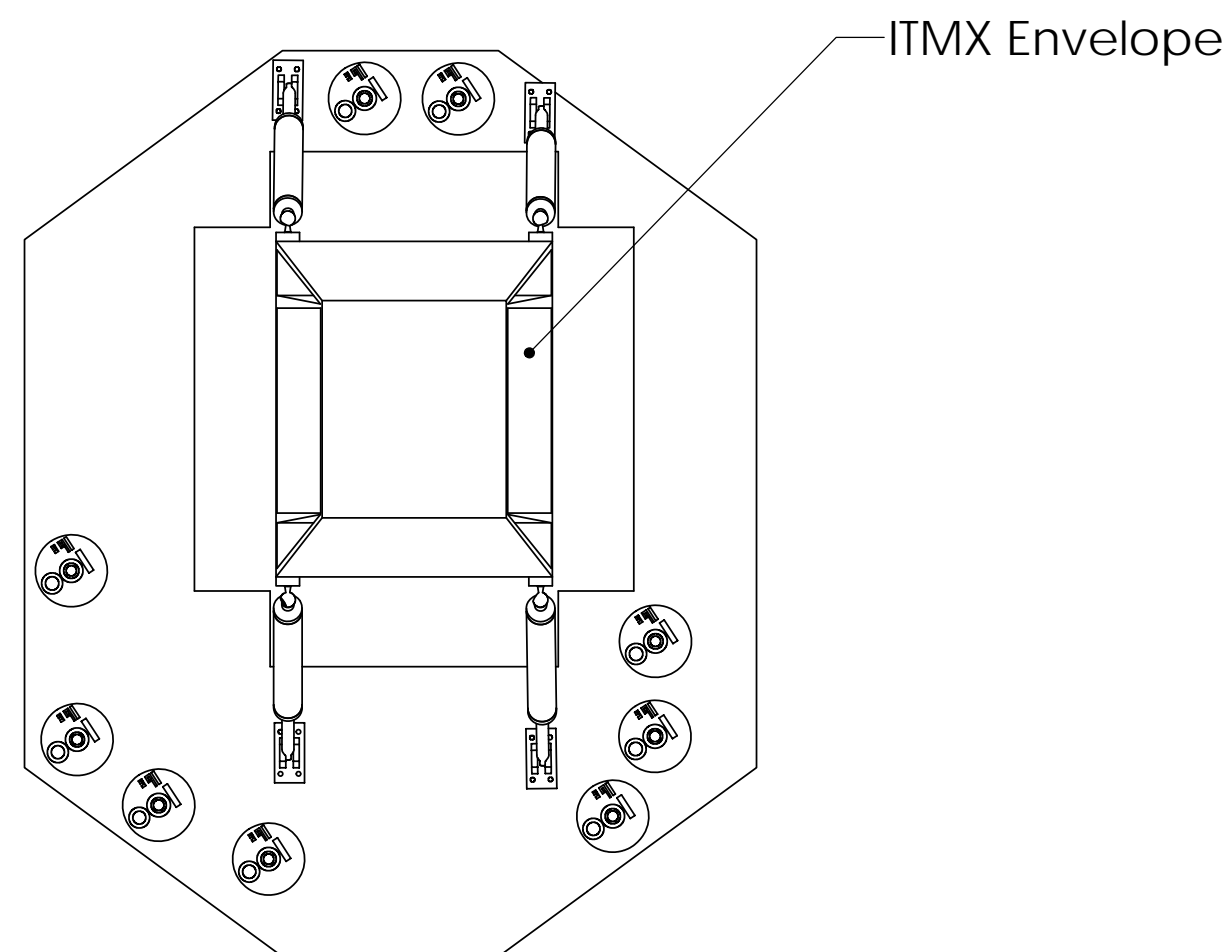
D0900492 BSC3-L1 Top Level Chamber Assembly, Complicated II, PART PDM REV: X-005, DRAWING PDM REV:

NOTES CONTINUED:  
 ⑤ Reference DCC # 1010076-02

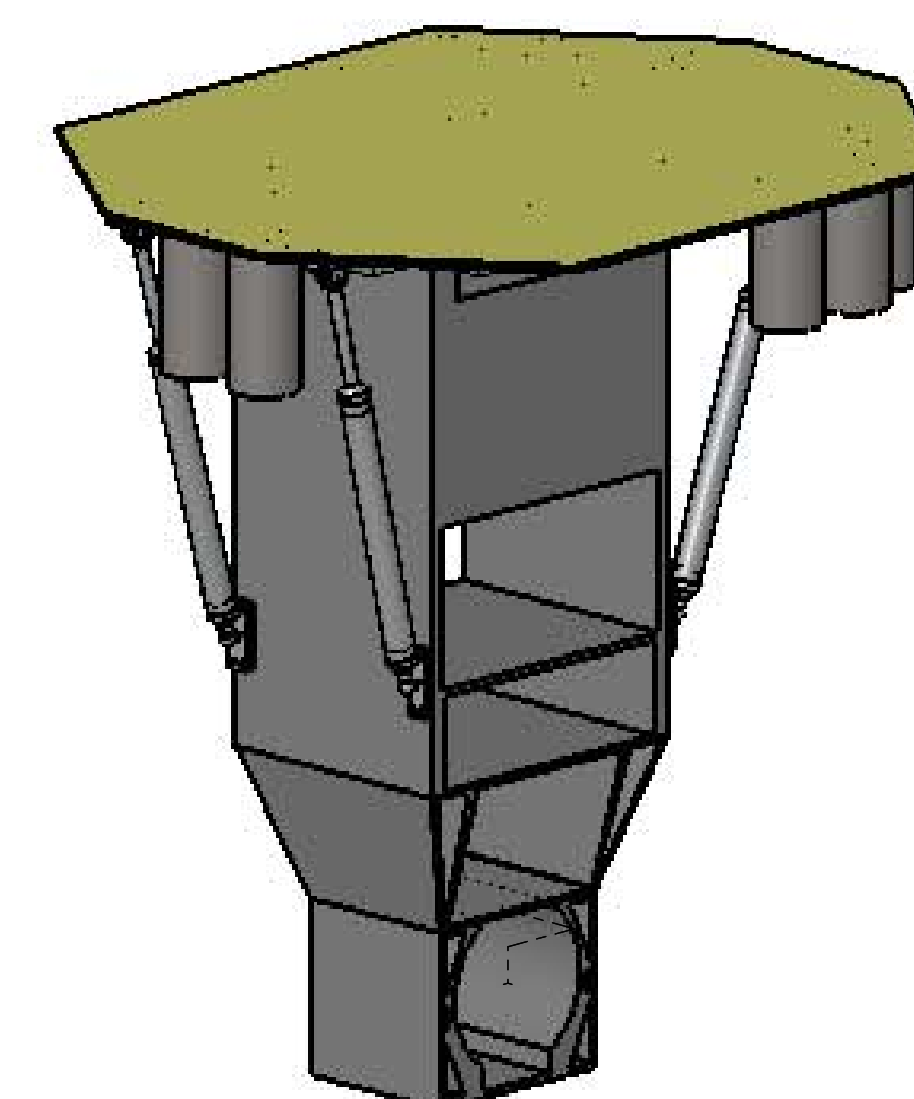
REV.	DATE	DCN #	DRAWING TREE #
-	-	-	-
-	-	-	-
-	-	-	-



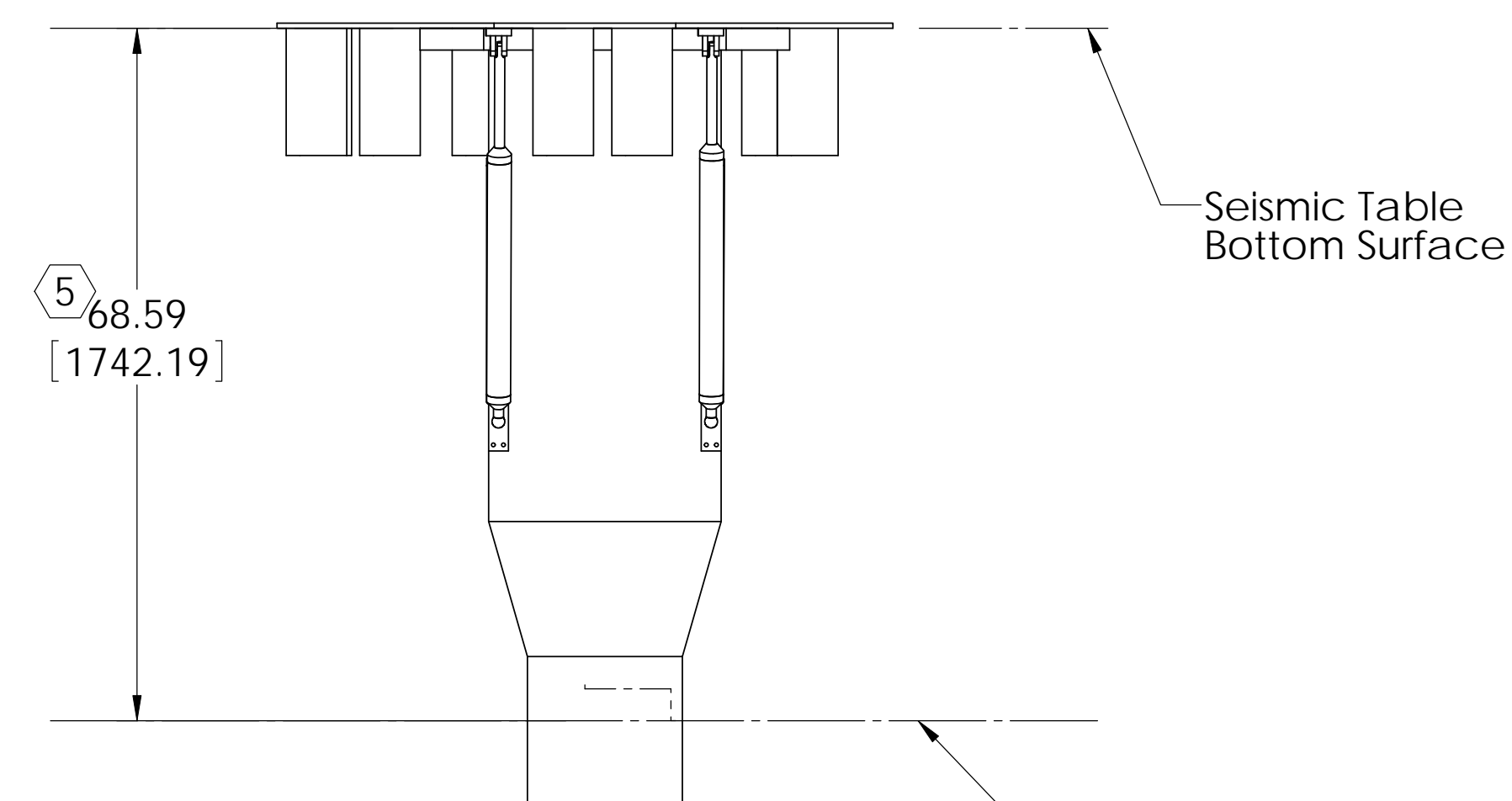
**TOP VIEW**



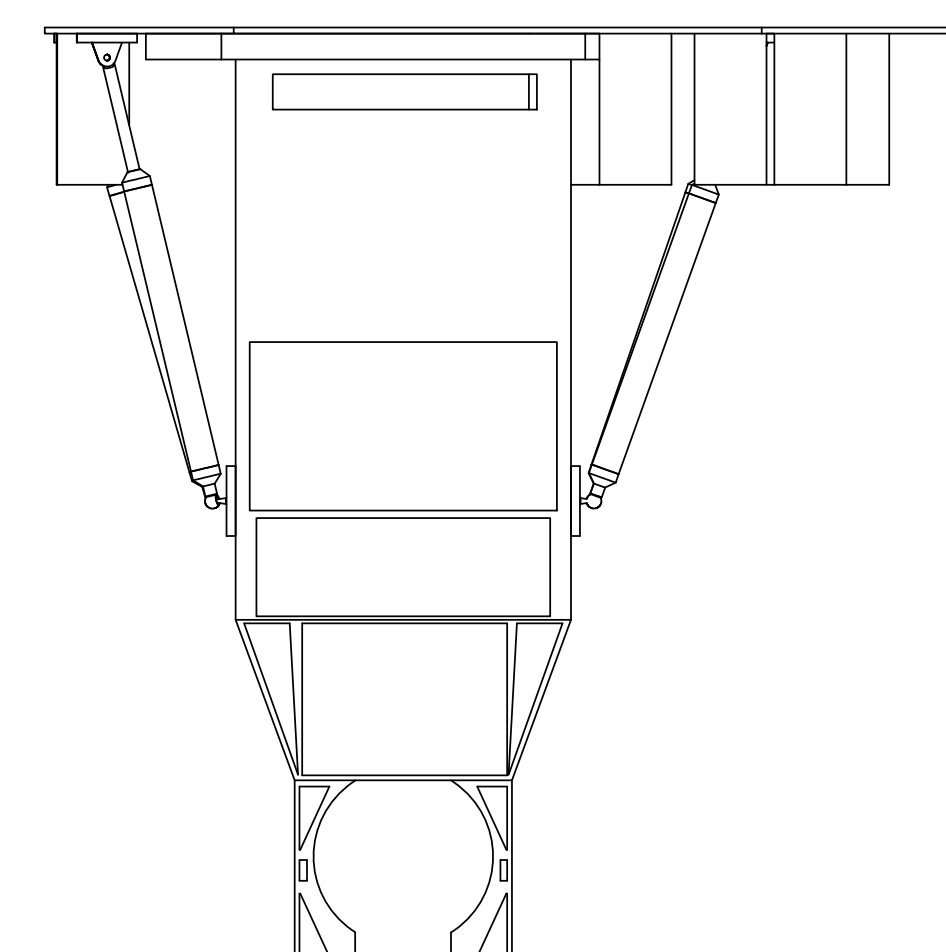
**BOTTOM VIEW**



**NO SUSPENDED MASS &  
 NO CHAMBER SHOWN**



**FRONT VIEW**



**RIGHT SIDE VIEW**

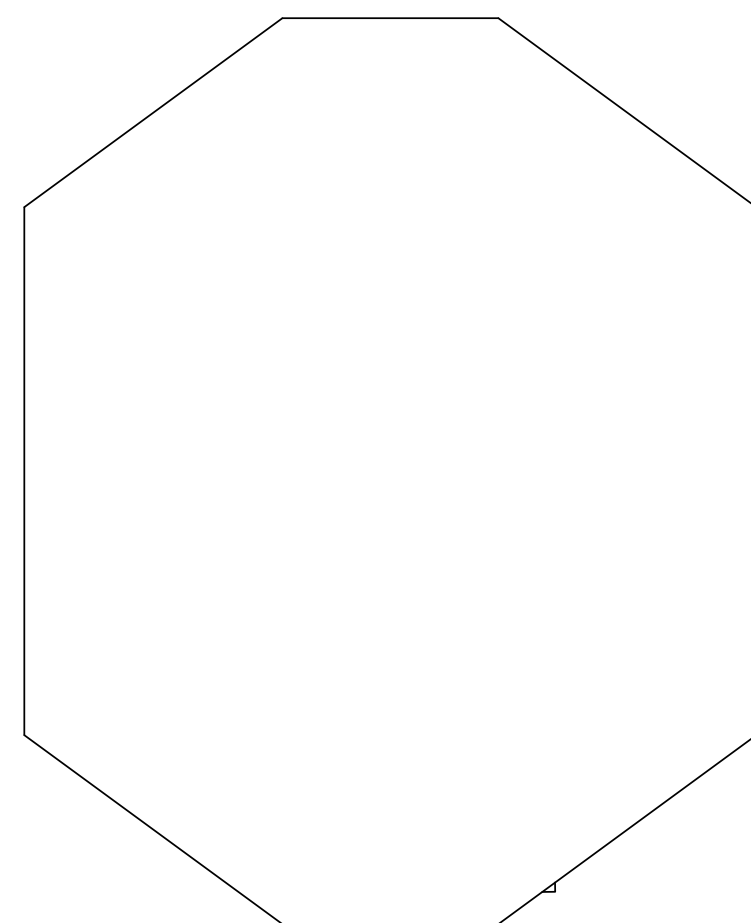
<b>BSC3-L1</b>	
CofG COORDINATES (mm)	
X	-20.8
Y	95.7
Z	1411.0
TABLE MASS W/NO SUS-MASS TOTAL	551.76

DIMENSIONS ARE IN INCHES TOLERANCES: .XX ± 0.01 .XXX ± 0.005 ANGULAR ± 0.5°		NOTES AND TOLERANCES: (UNLESS OTHERWISE SPECIFIED) 1. INTERPRET DRAWING PER ASME Y14.5-1994. 2. REMOVE ALL SHARP EDGES, R.02 MIN. 3. DO NOT SCALE FROM DRAWING. 4. ALL MACHINING FLUIDS SHALL BE WATER SOLUBLE AND FREE OF SULFUR, CHLORINE AND SILICONE, SUCH AS CINCINNATI MILACRON'S CIMTECH 410.		CALIFORNIA INSTITUTE OF TECHNOLOGY MASSACHUSETTS INSTITUTE OF TECHNOLOGY		PART NAME <b>BSC3-L1 Top Level Chamber Assembly, Simplified</b>	
MATERIAL --		FINISH -- μinch		SYSTEM <b>ADVANCED LIGO</b>		SUB-SYSTEM <b>SUS</b>	
NEXT ASSY		DESIGNER ED CHAVEZ		SIZE <b>D</b>		DWG. NO. <b>D0900492</b>	
CHECKER		APPROVAL		SCALE: 1:24		PROJECTION:	
				SHEET 3 OF 4		REV. v2	

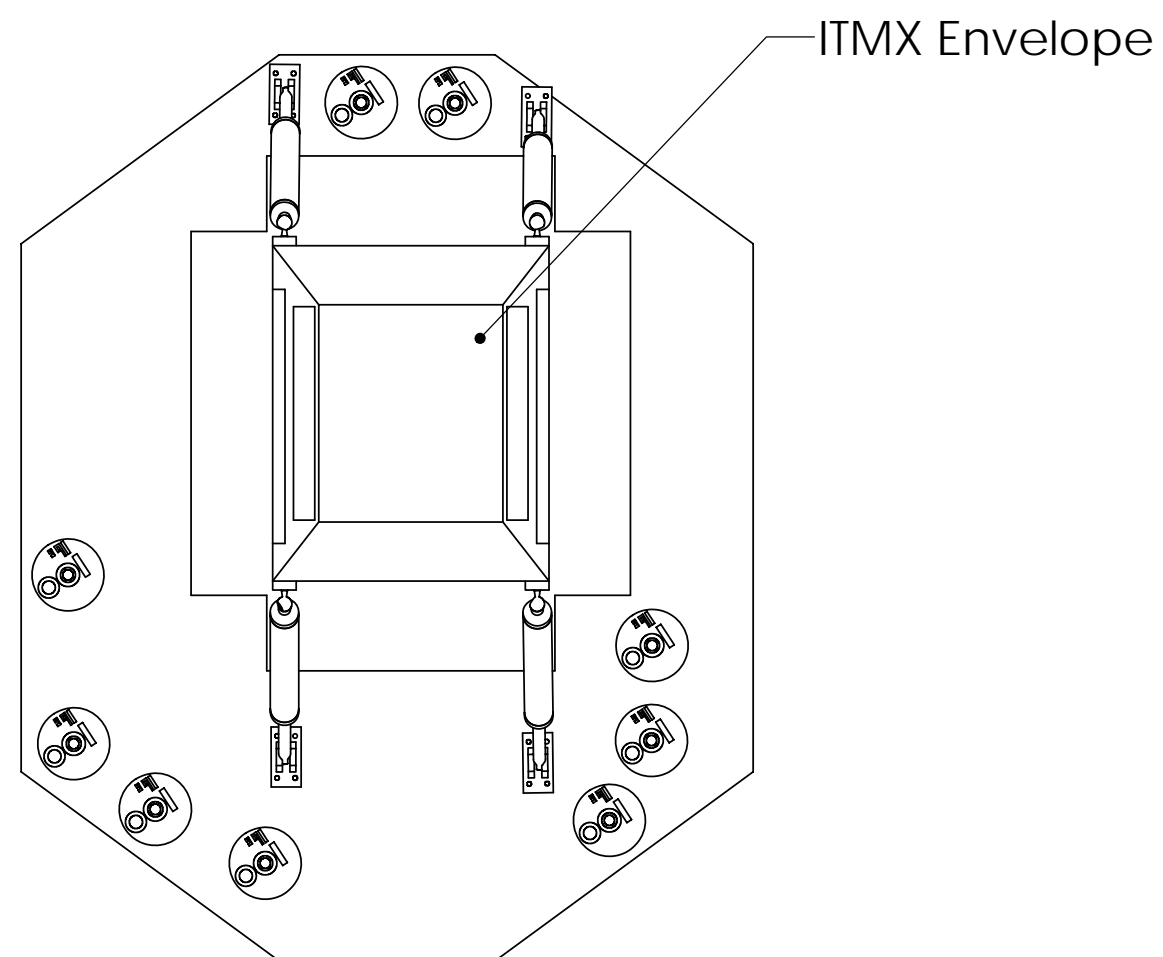
D0900492 BSC3-L1 Top Level Chamber Assembly, Simplified.dwg, Simplified.dwg, PDM REV. 2.005, DRAWING, PDM REV.

NOTES CONTINUED:  
 (5) Reference DCC # 1010076-02

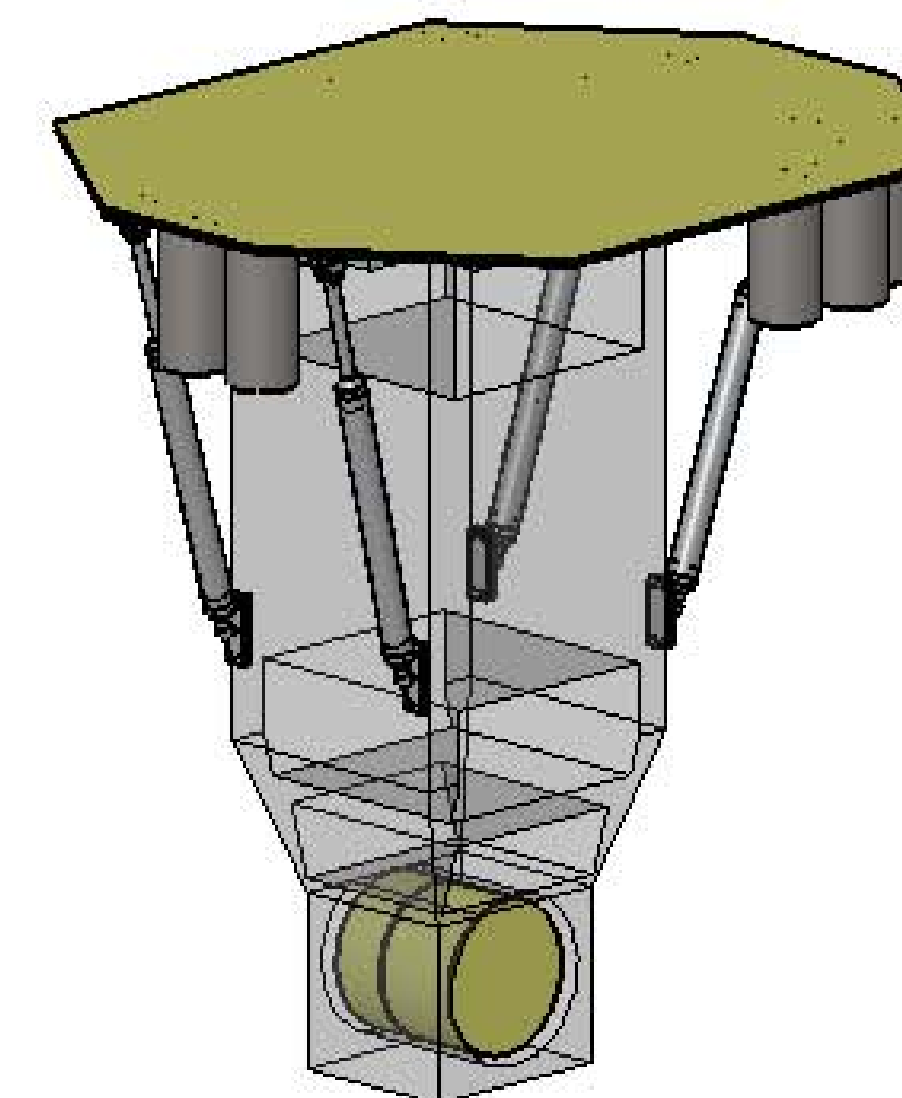
REV.	DATE	DCN #	DRAWING TREE #
-	-	-	-
-	-	-	-
-	-	-	-



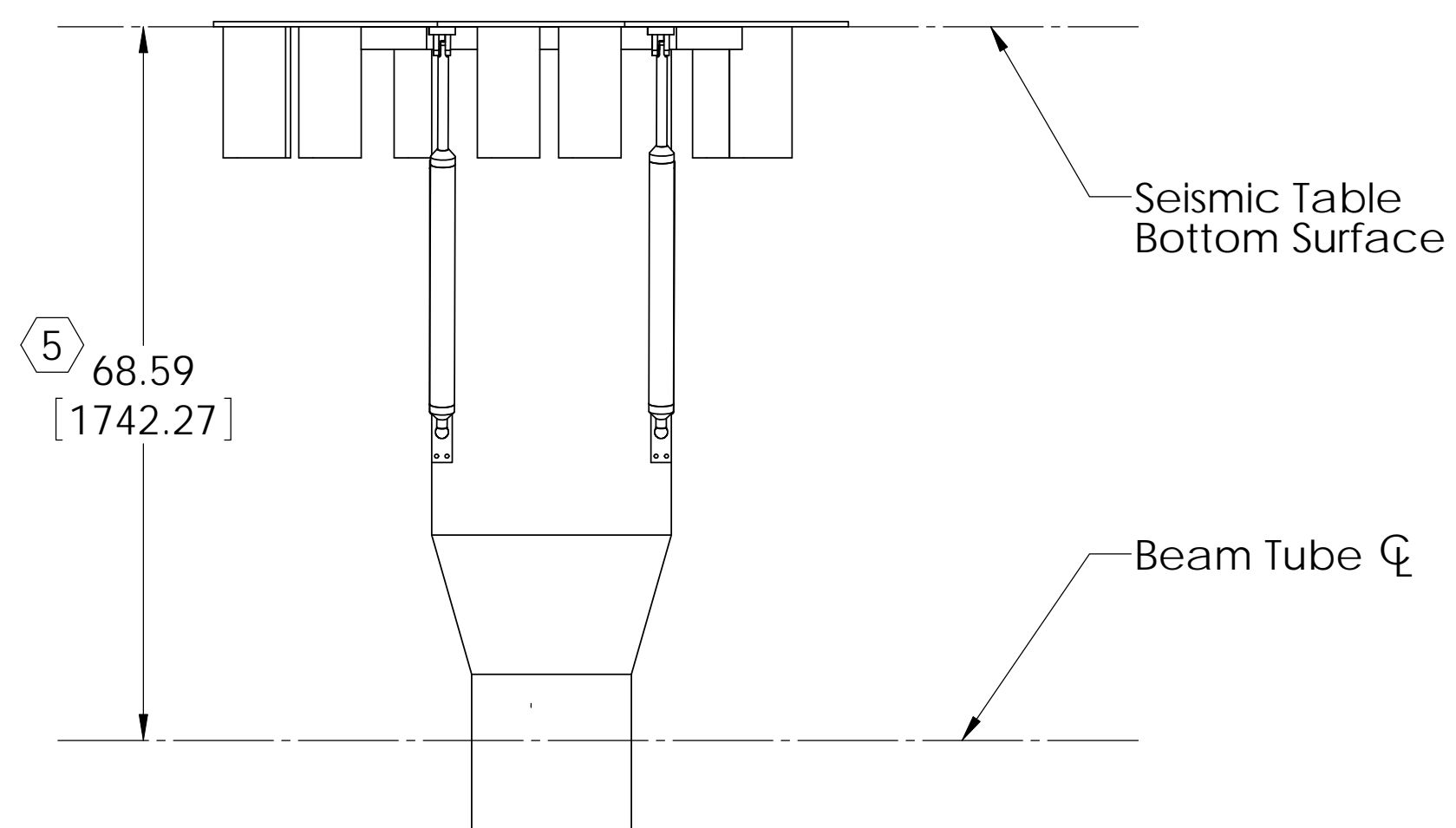
**TOP VIEW**



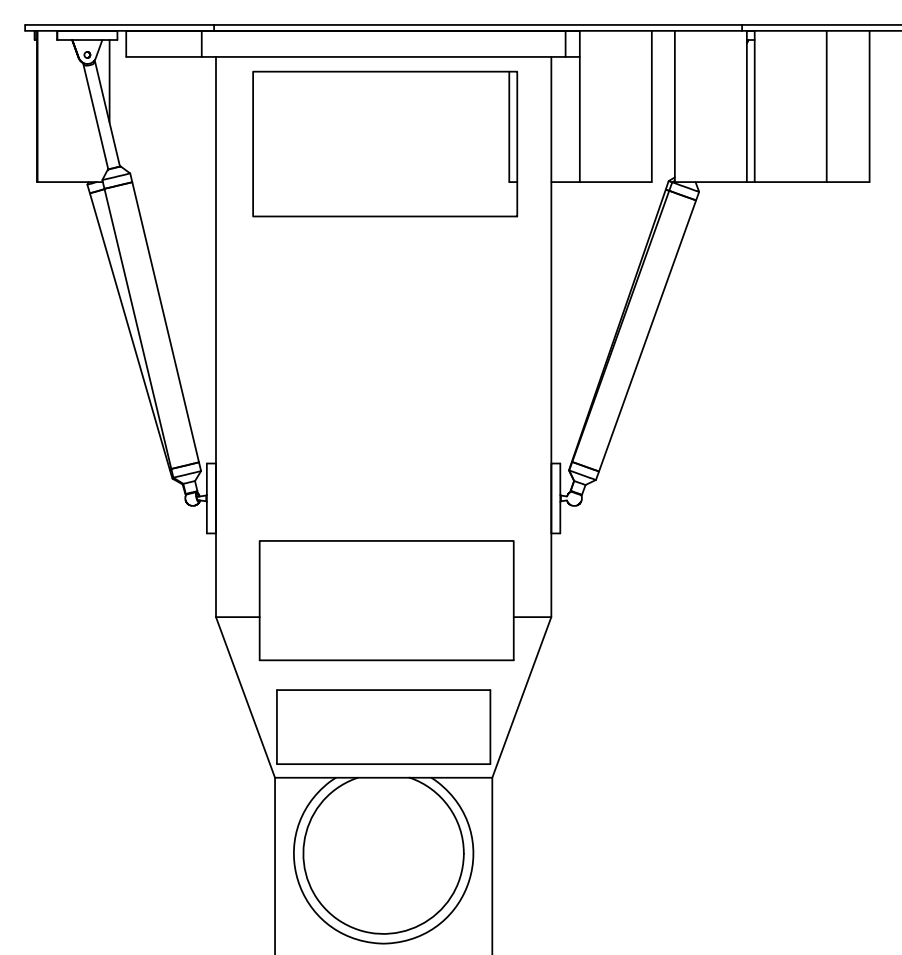
**BOTTOM VIEW**



**TABLE MASS TOTAL & NO CHAMBER SHOWN**



**FRONT VIEW**



**RIGHT SIDE VIEW**

<b>BSC3-L1</b>	
CofG COORDINATES (mm)	
X	1.55
Y	1.77
Z	1129.98
TABLE MASS TOTAL	806.13

NOTES AND TOLERANCES: (UNLESS OTHERWISE SPECIFIED)				CALIFORNIA INSTITUTE OF TECHNOLOGY MASSACHUSETTS INSTITUTE OF TECHNOLOGY		PART NAME	
DIMENSIONS ARE IN INCHES TOLERANCES: .XX ± 0.01 .XXX ± 0.005 ANGULAR ± 0.5°				<b>LIGO</b>		<b>BSC3-L1 Top Level Chamber Assembly, Simplified</b>	
1. INTERPRET DRAWING PER ASME Y14.5-1994. 2. REMOVE ALL SHARP EDGES, R.02 MIN. 3. DO NOT SCALE FROM DRAWING. 4. ALL MACHINING FLUIDS SHALL BE WATER SOLUBLE AND FREE OF SULFUR, CHLORINE AND SILICONE, SUCH AS CINCINNATI MILACRON'S CIMTECH 410.				SYSTEM <b>ADVANCED LIGO</b>	SUB-SYSTEM <b>SUS</b>	DESIGNER ED CHAVEZ	SIZE DWG. NO. <b>D0900492</b>
MATERIAL: -- FINISH: -- μinch				NEXT ASSY	CHECKER	DATE 27 JUL 2009	REV. v2
				SCALE: 1:24 PROJECTION:		SHEET 4 OF 4	

D0900492 BSC3-L1 Top Level Chamber Assembly, Simplified.dwg PART PDM REV: X.005 DRAWING PDM REV: 0