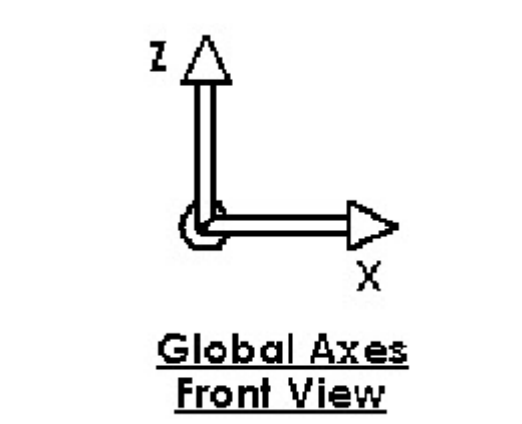
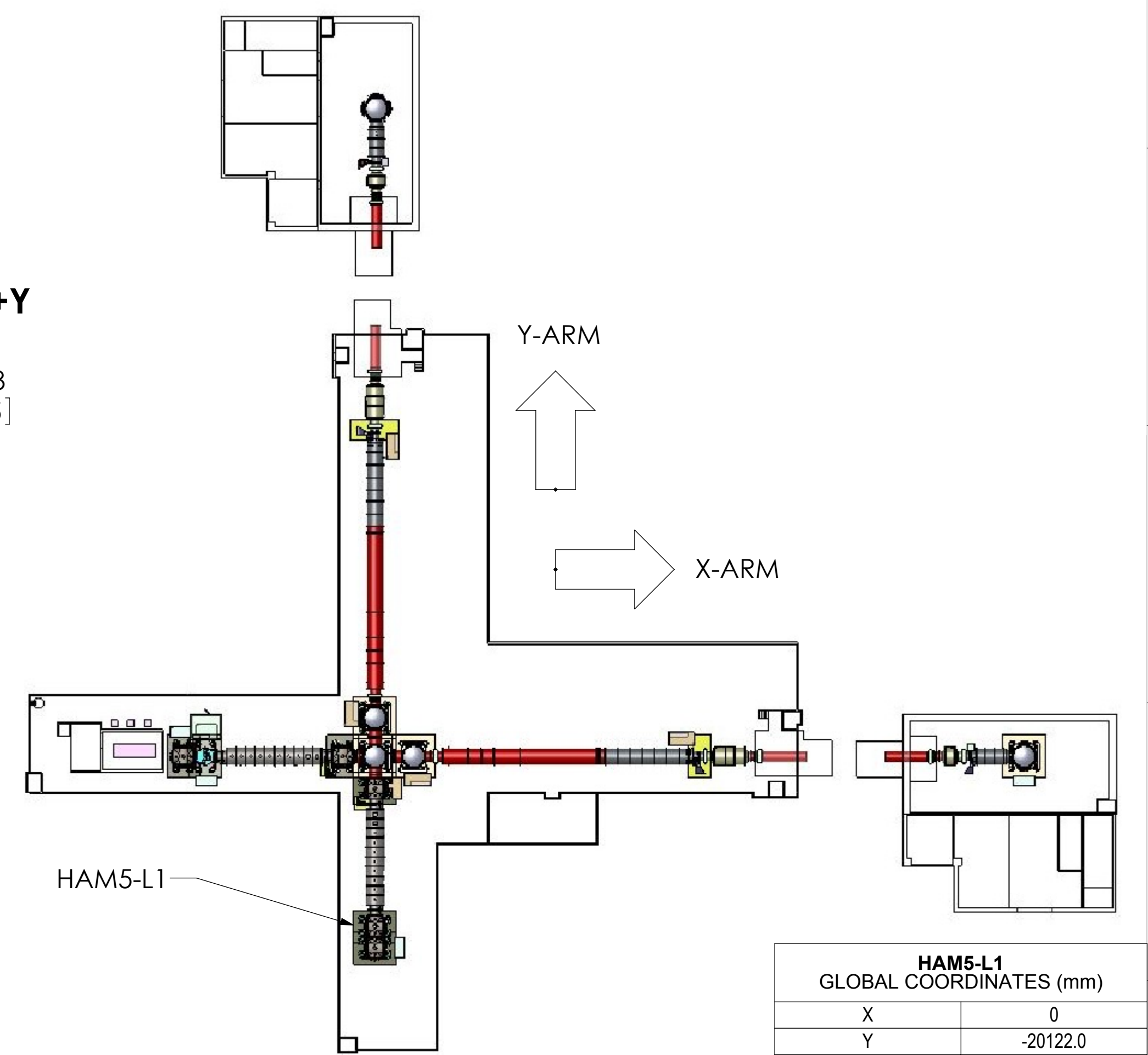
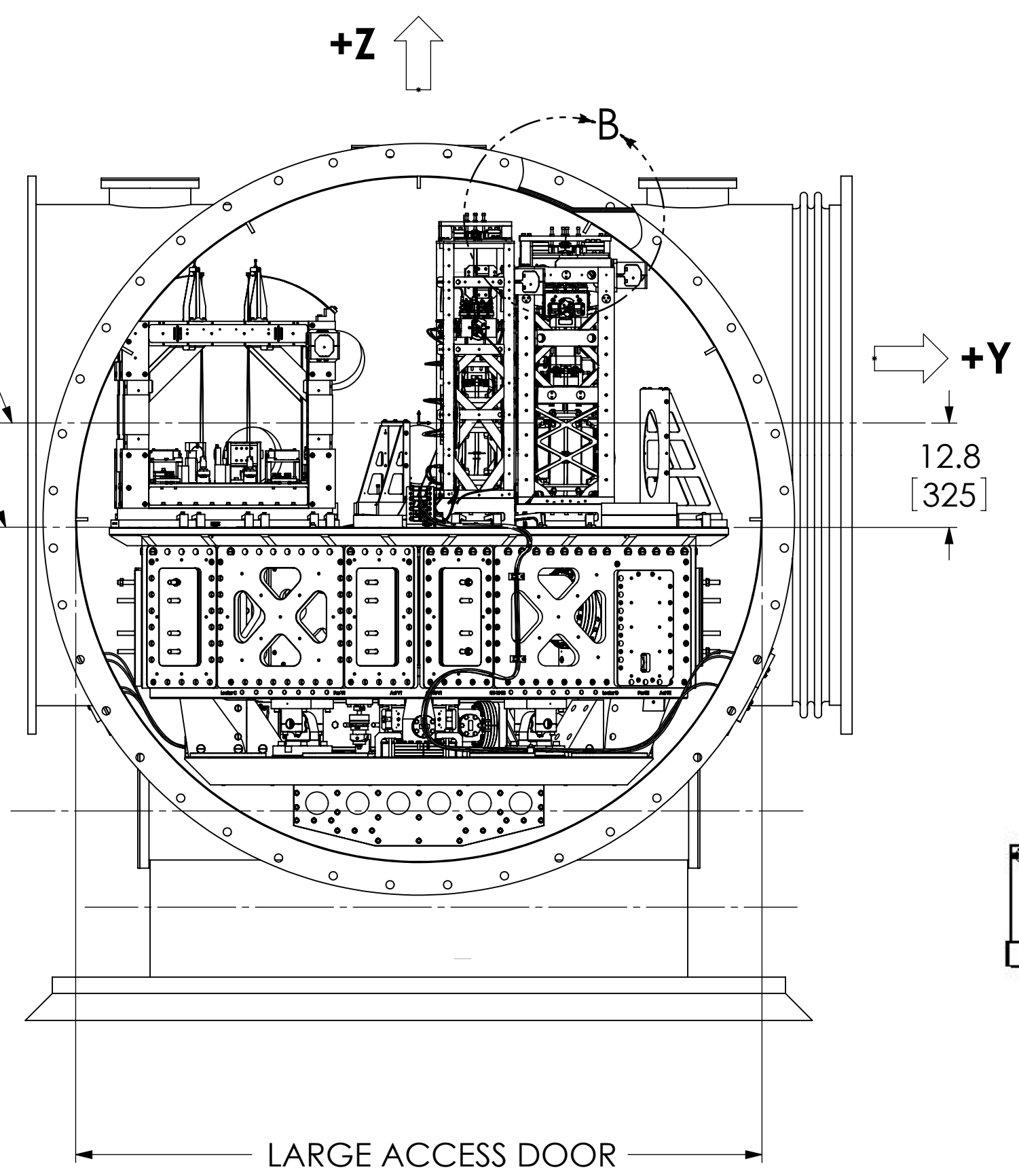
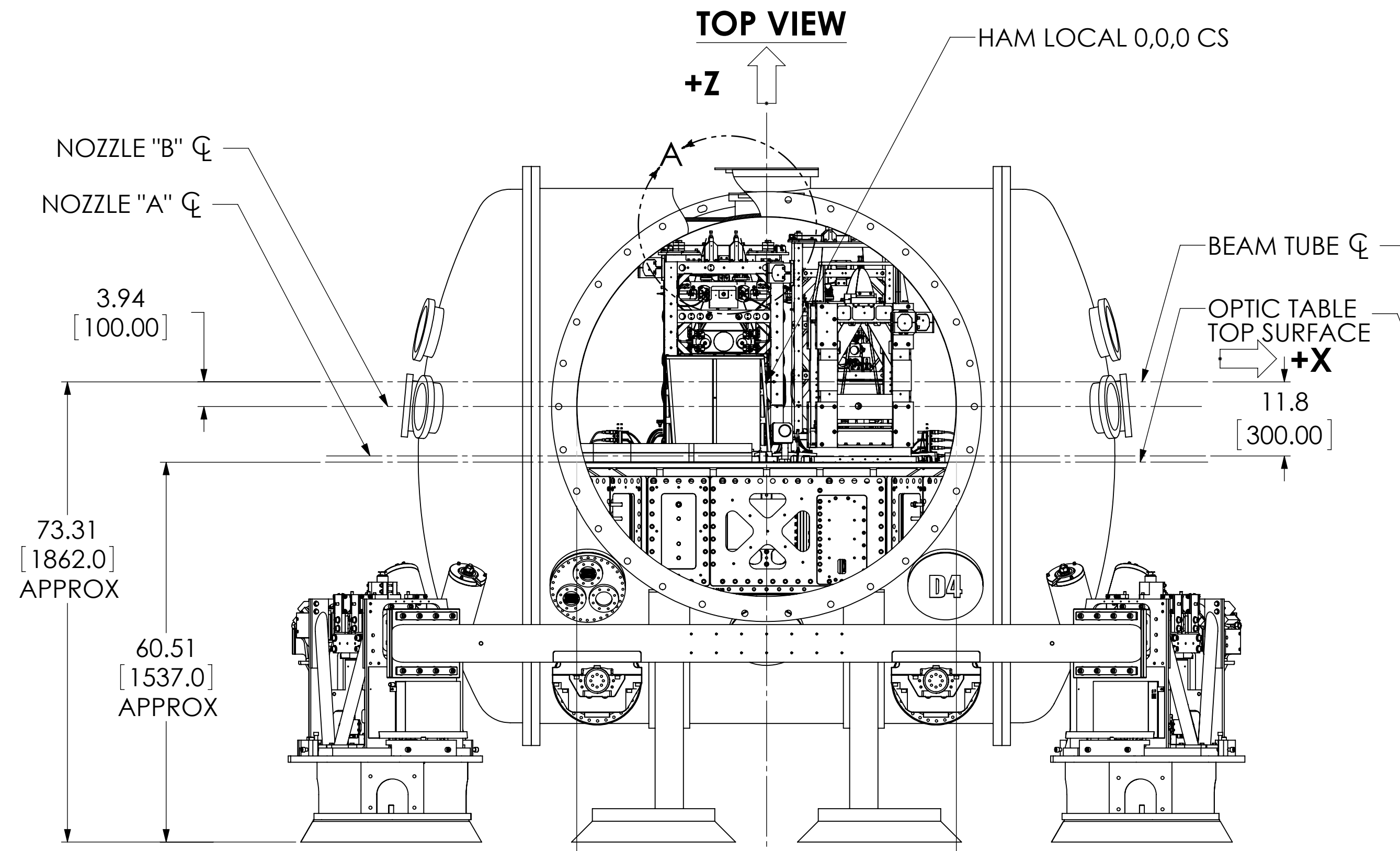
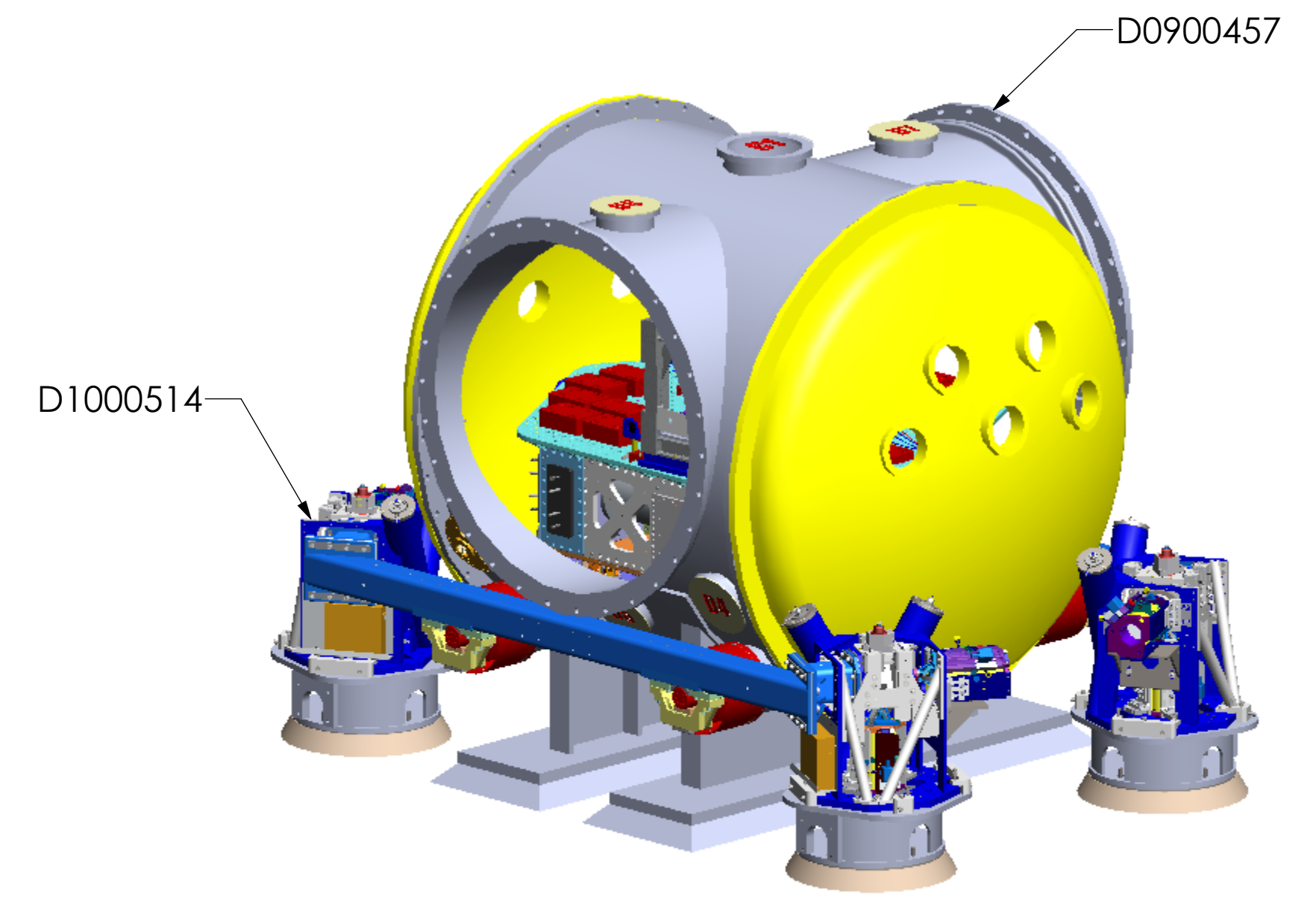
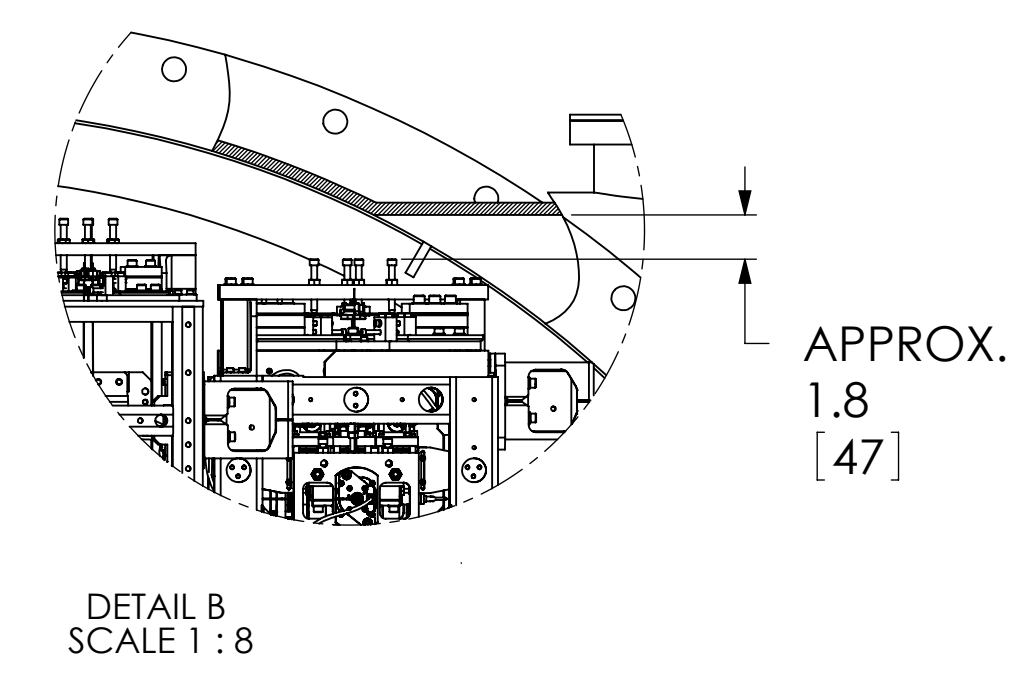
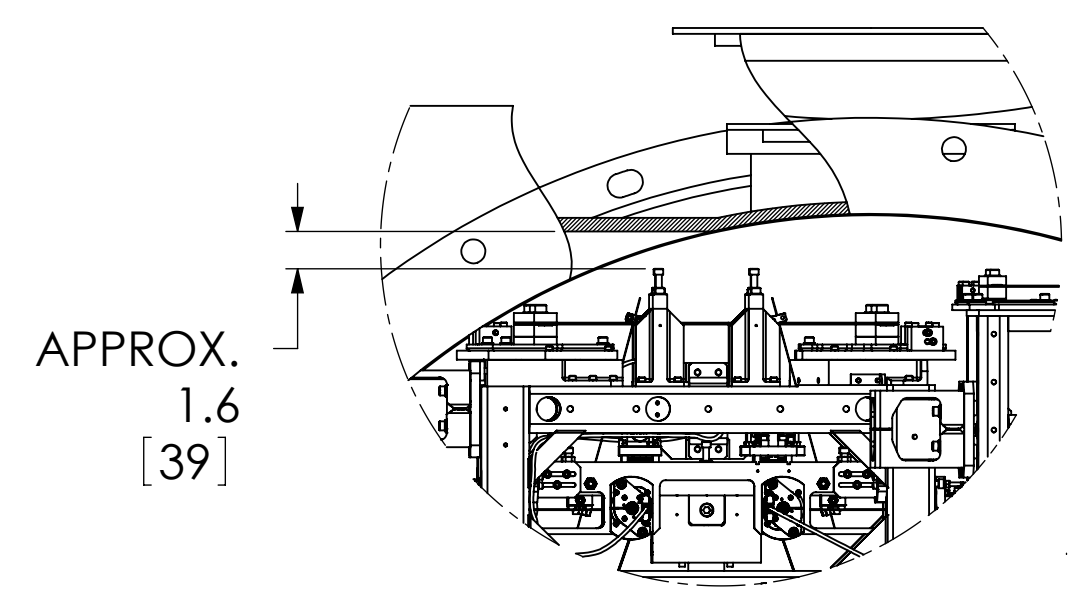
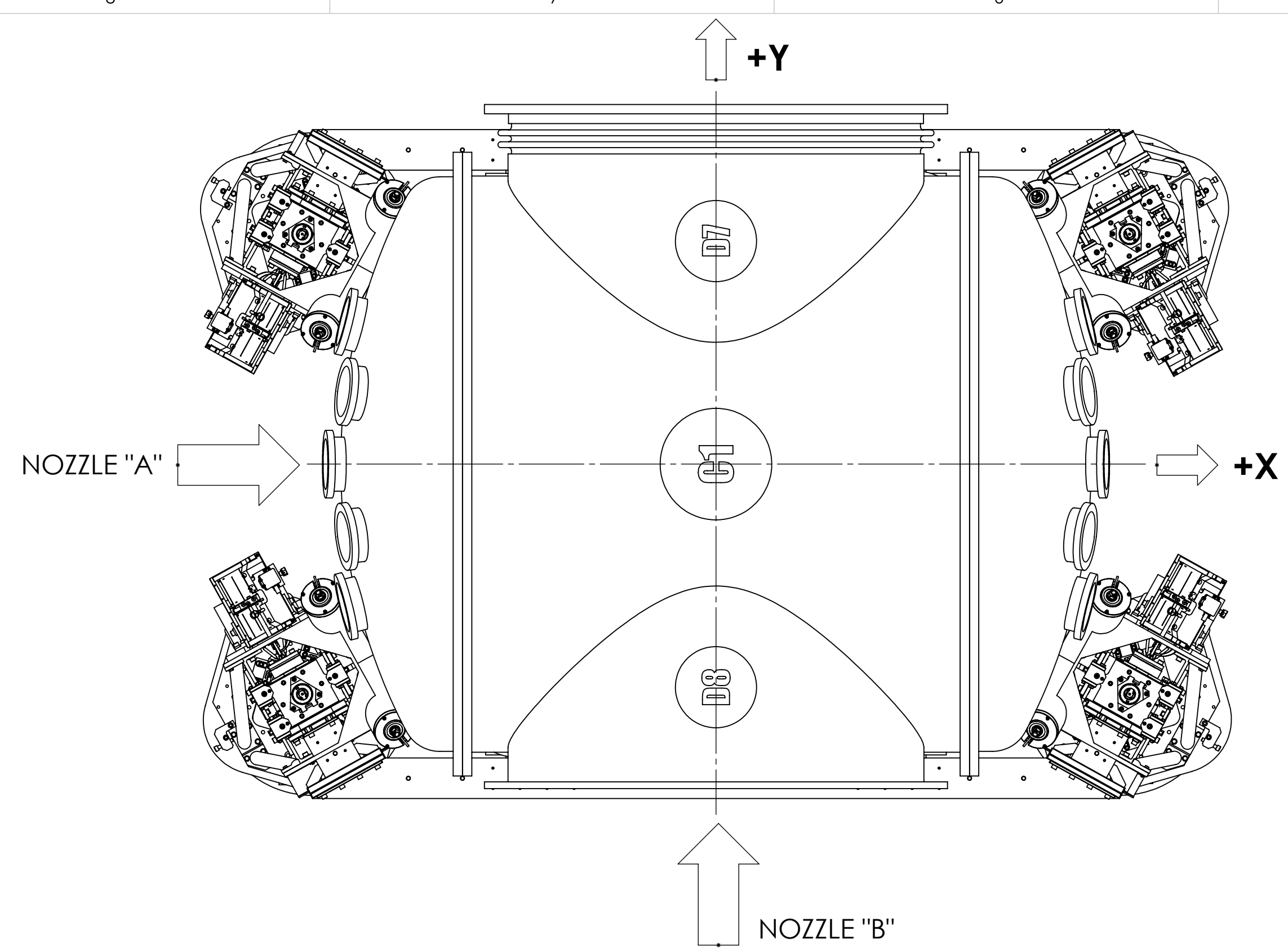


| REV. | DATE | DCH # | DRAWING TREE # |
|------|-------------|-------|----------------|
| v9 | 09 AUG 2012 | | |
| v10 | 18 DEC 2012 | | |
| v11 | 02 APR 2013 | | |



SMALL ACCESS DOOR
 ϕ 60.50
 [1536.70]

LARGE ACCESS DOOR
 ϕ 84.25
 [2139.95]

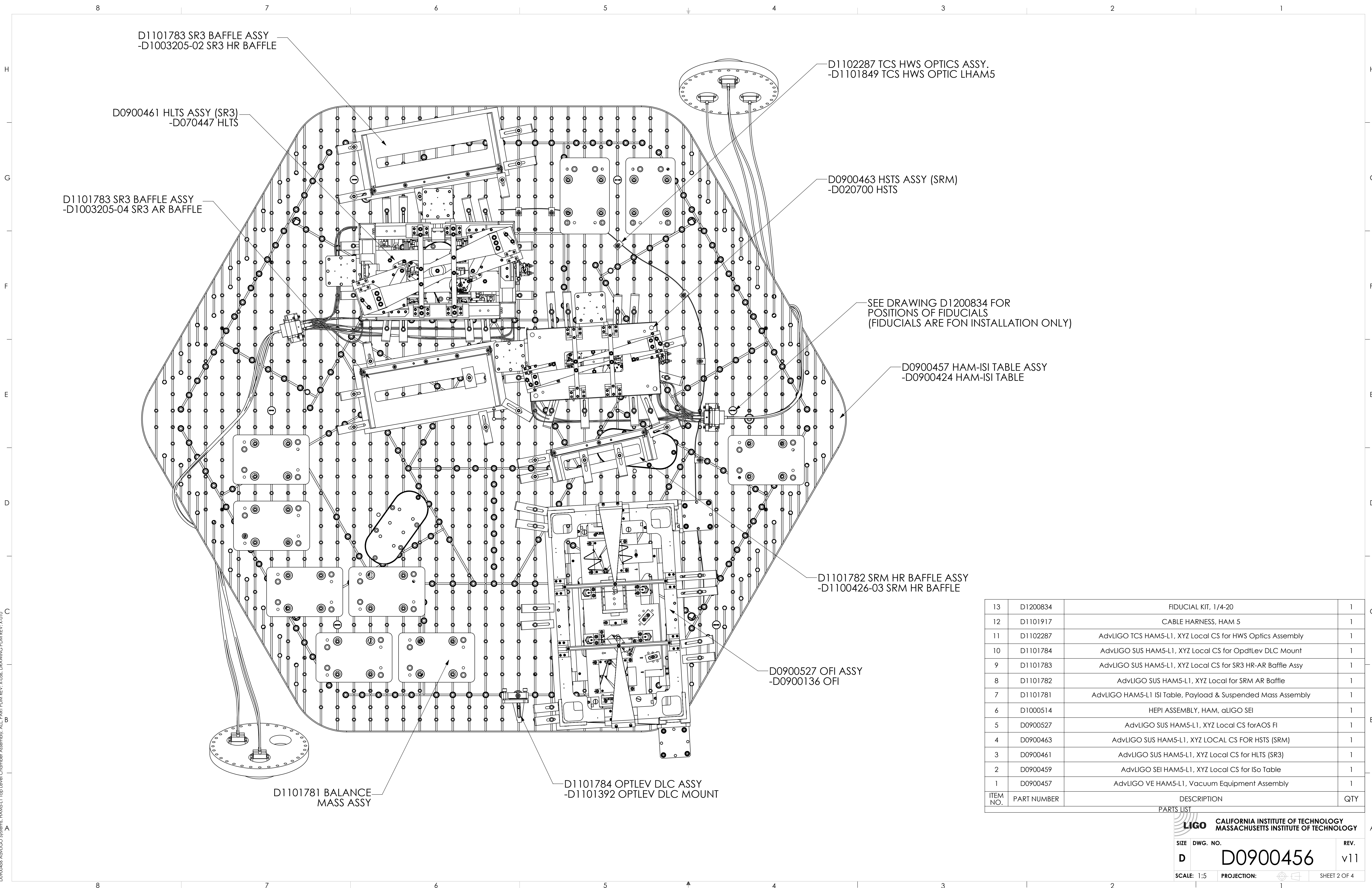
| HAM5-L1 GLOBAL COORDINATES (mm) | |
|---------------------------------|----------|
| X | 0 |
| Y | -20122.0 |
| Z | 0 |

NOTES AND TOLERANCES: (UNLESS OTHERWISE SPECIFIED)

| | | | |
|----------|----|--------|---------------|
| MATERIAL | -- | FINISH | -- μ inch |
|----------|----|--------|---------------|

| | | | |
|---|--|-----------------------------------|--------------------|
| CALIFORNIA INSTITUTE OF TECHNOLOGY MASSACHUSETTS INSTITUTE OF TECHNOLOGY | | PART NAME | |
| SYSTEM ADVANCED LIGO | | SUB-SYSTEM SUS | |
| NEXT ASSY | | DESIGNER ED CHAVEZ 27 JUL 2009 | |
| | | DRAFTER C. TORRIE 15 NOV 2011 | |
| | | CHECKER SEE DCC | |
| | | APPROVAL SEE DCC | |
| | | SIZE DWG. NO. D | REV. v11 |
| | | SCALE: 1:16 PROJECTION: | |
| | | SHEET 1 OF 4 | |

D:\D0900456\AdvLIGO Systems\HAM5-L1 Top Level Chamber Assembly\ALL PART PDM REV: X-056.DWG PDM REV: X-010



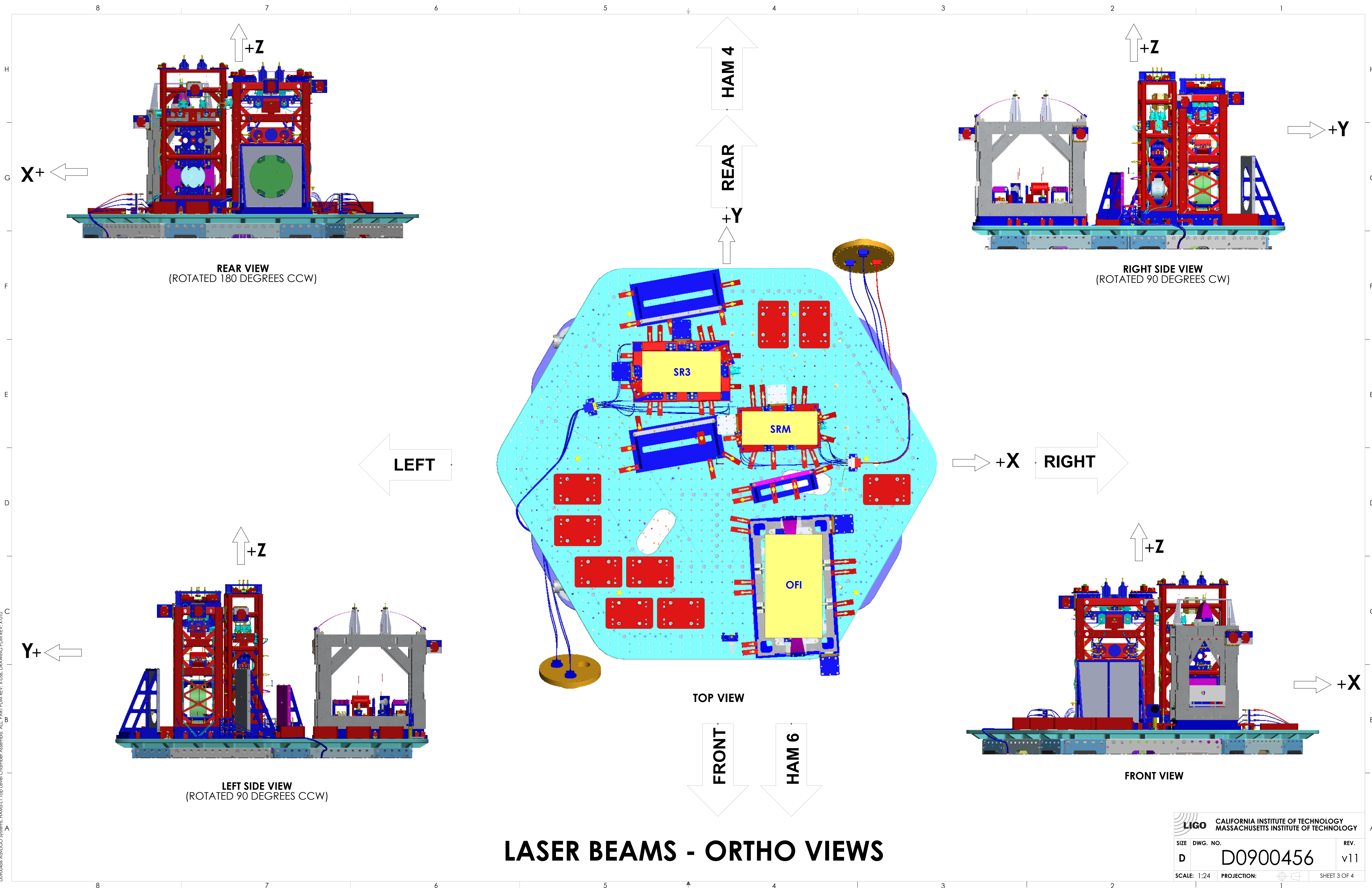
| ITEM NO. | PART NUMBER | DESCRIPTION | QTY |
|----------|-------------|--|-----|
| 13 | D1200834 | FIDUCIAL KIT, 1/4-20 | 1 |
| 12 | D1101917 | CABLE HARNESS, HAM 5 | 1 |
| 11 | D1102287 | AdvLIGO TCS HAM5-L1, XYZ Local CS for HWS Optics Assembly | 1 |
| 10 | D1101784 | AdvLIGO SUS HAM5-L1, XYZ Local CS for OptLev DLC Mount | 1 |
| 9 | D1101783 | AdvLIGO SUS HAM5-L1, XYZ Local CS for SR3 HR-AR Baffle Assy | 1 |
| 8 | D1101782 | AdvLIGO SUS HAM5-L1, XYZ Local for SRM AR Baffle | 1 |
| 7 | D1101781 | AdvLIGO HAM5-L1 ISI Table, Payload & Suspended Mass Assembly | 1 |
| 6 | D1000514 | HEPI ASSEMBLY, HAM, aLIGO SEI | 1 |
| 5 | D0900527 | AdvLIGO SUS HAM5-L1, XYZ Local CS for AOS FI | 1 |
| 4 | D0900463 | AdvLIGO SUS HAM5-L1, XYZ LOCAL CS FOR HSTS (SRM) | 1 |
| 3 | D0900461 | AdvLIGO SUS HAM5-L1, XYZ Local CS for HLTS (SR3) | 1 |
| 2 | D0900459 | AdvLIGO SEI HAM5-L1, XYZ Local CS for ISo Table | 1 |
| 1 | D0900457 | AdvLIGO VE HAM5-L1, Vacuum Equipment Assembly | 1 |

LIGO CALIFORNIA INSTITUTE OF TECHNOLOGY
 MASSACHUSETTS INSTITUTE OF TECHNOLOGY

SIZE DWG. NO. REV.
 D D0900456 v11

SCALE: 1:5 PROJECTION: SHEET 2 OF 4

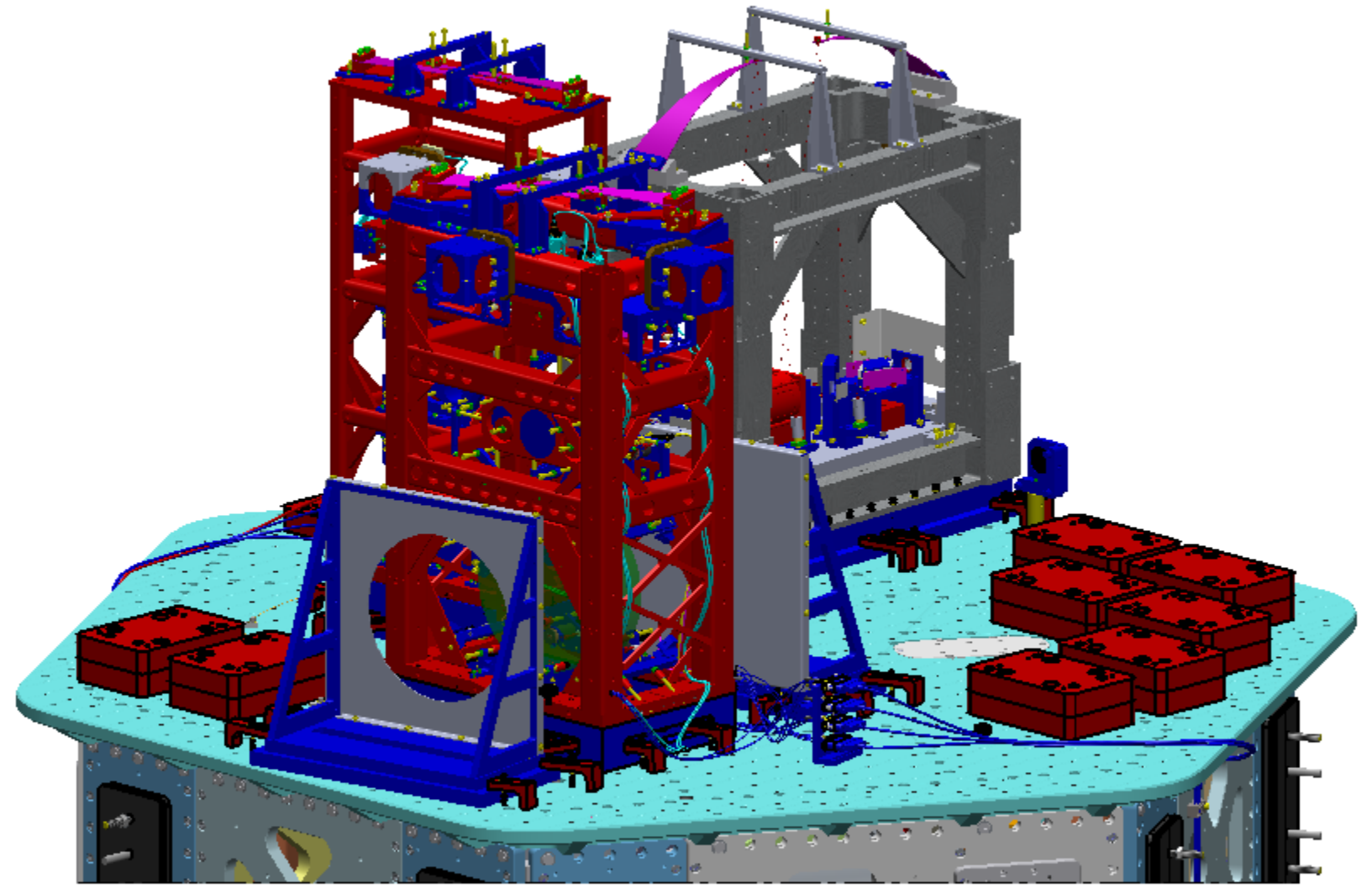
D0900457 AdvLIGO Systems: HAMS-L1 Top Level Chamber Assembly: ALL PART PDM REV: X-056, DRAWING PDM REV: X-010



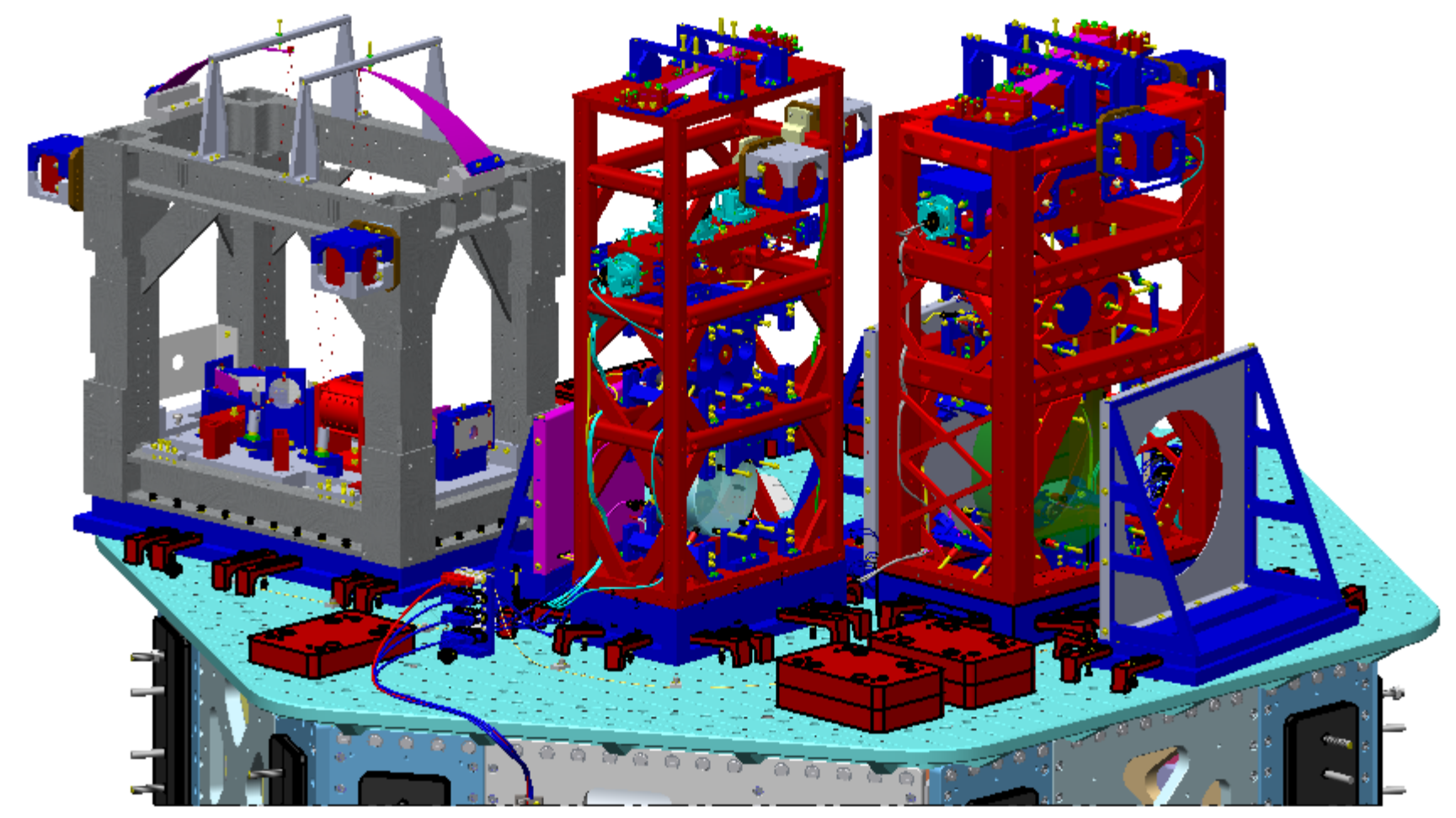
LASER BEAMS - ORTHO VIEWS

| | |
|---|-------------|
| CALIFORNIA INSTITUTE OF TECHNOLOGY MASSACHUSETTS INSTITUTE OF TECHNOLOGY | |
| SIZE DWG. NO. | REV. |
| D D0900456 | v11 |
| SCALE: 1:24 | PROJECTION: |
| SHEET 3 OF 4 | |

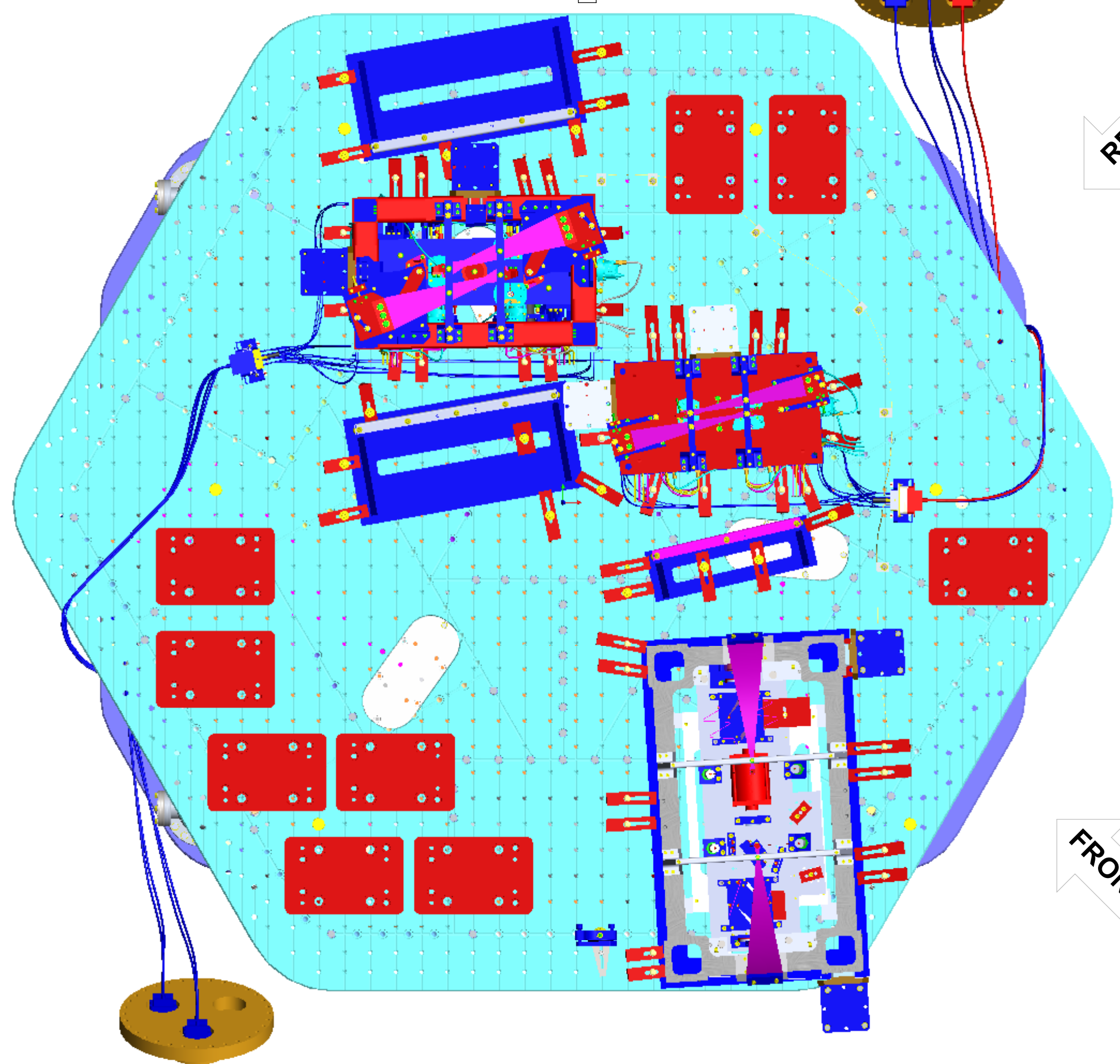
D:\D0900456_Ash\LIGO Systems\HAMS\1 Top Level Chamber Assembly\ALL PART PDM REV. X-056 DRAWING PDM REV. X-010



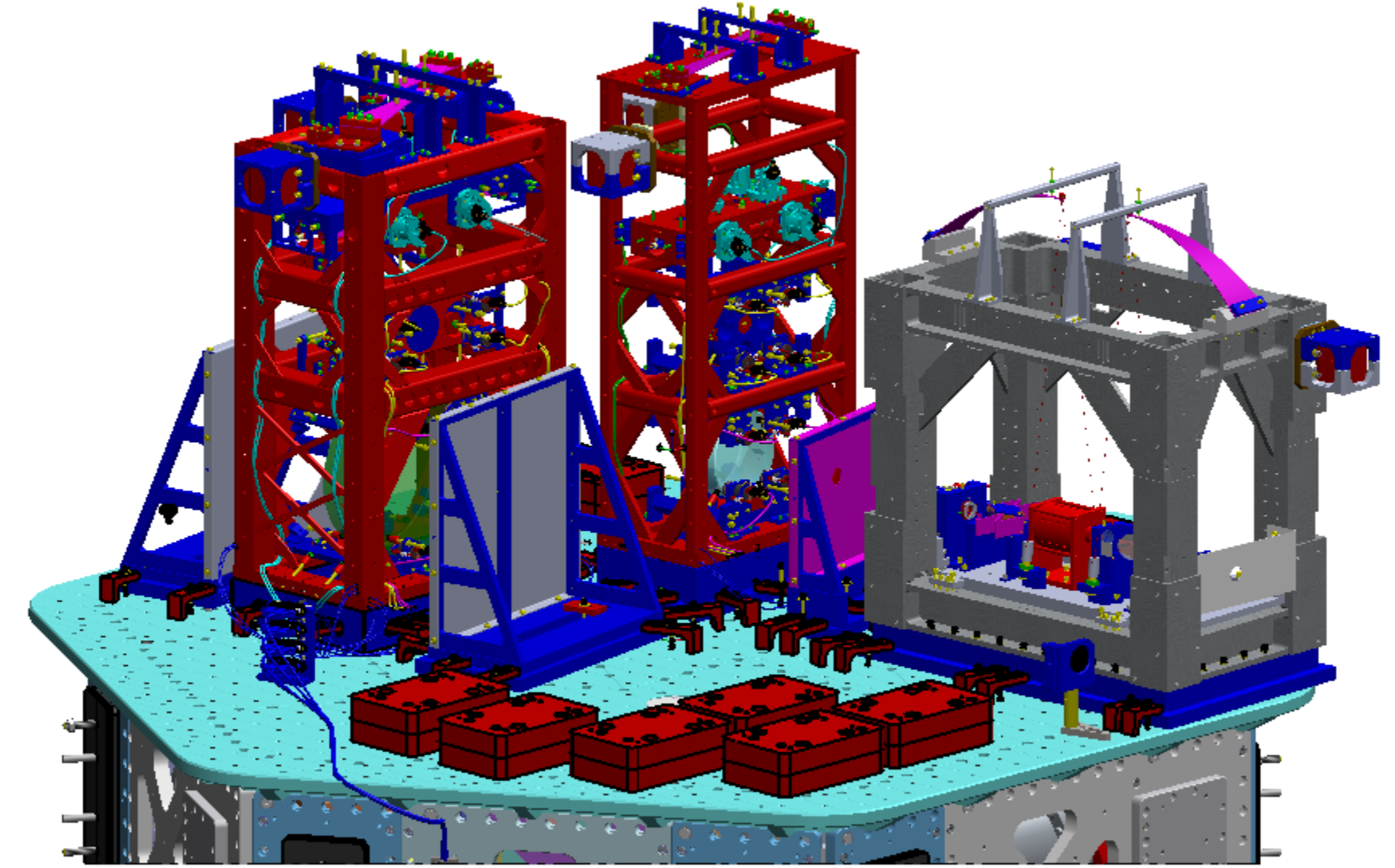
ISO REAR - LEFT



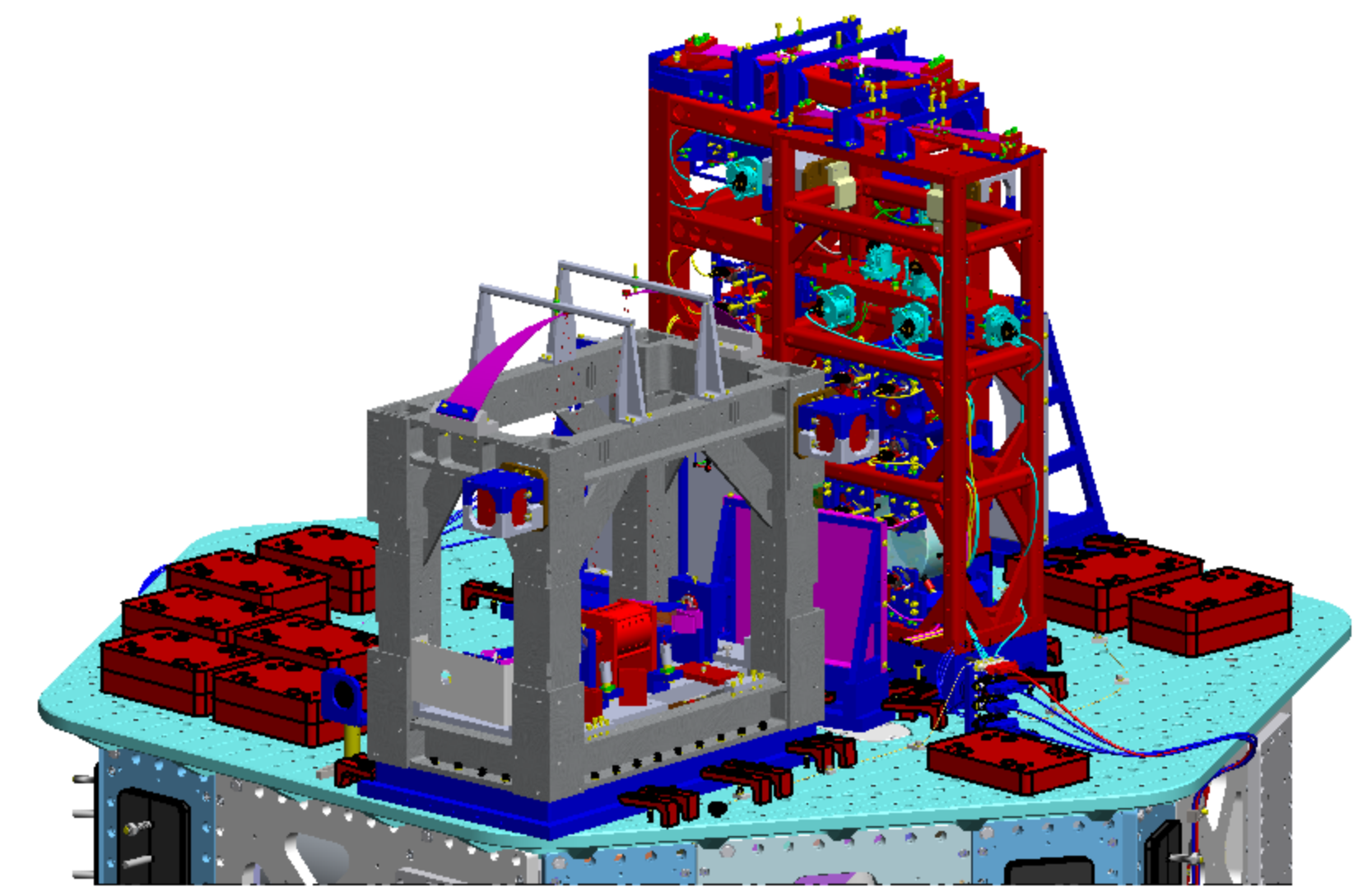
ISO REAR - RIGHT



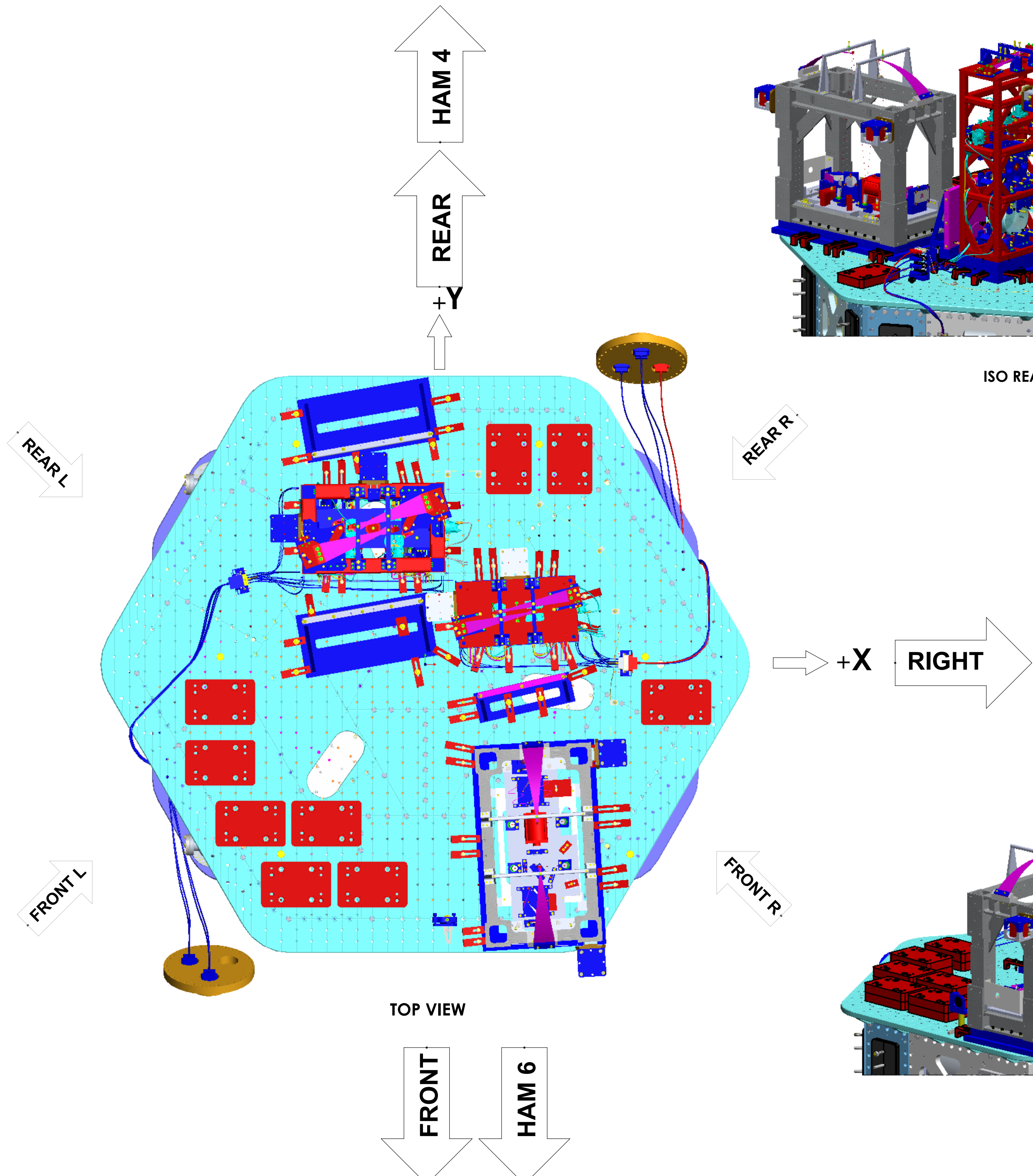
TOP VIEW



ISO FRONT - LEFT



ISO FRONT - RIGHT



LASER BEAMS - ISO VIEWS

| | | |
|---|-------------|--------------|
| CALIFORNIA INSTITUTE OF TECHNOLOGY MASSACHUSETTS INSTITUTE OF TECHNOLOGY | | REV. |
| SIZE | DWG. NO. | REV. |
| D | D0900456 | v11 |
| SCALE: 1:24 | PROJECTION: | SHEET 4 OF 4 |

D:\PROJ\65_Adu\LIGO Systems_HAMS_L1_Top Level Chamber Assembly_All Part PDM_REV_X-056_DRAWING PDM_REV_X-010