

HAM5-L1 GLOBAL COORDINATES (mm)	
X	0
Y	-20122.0
Z	0

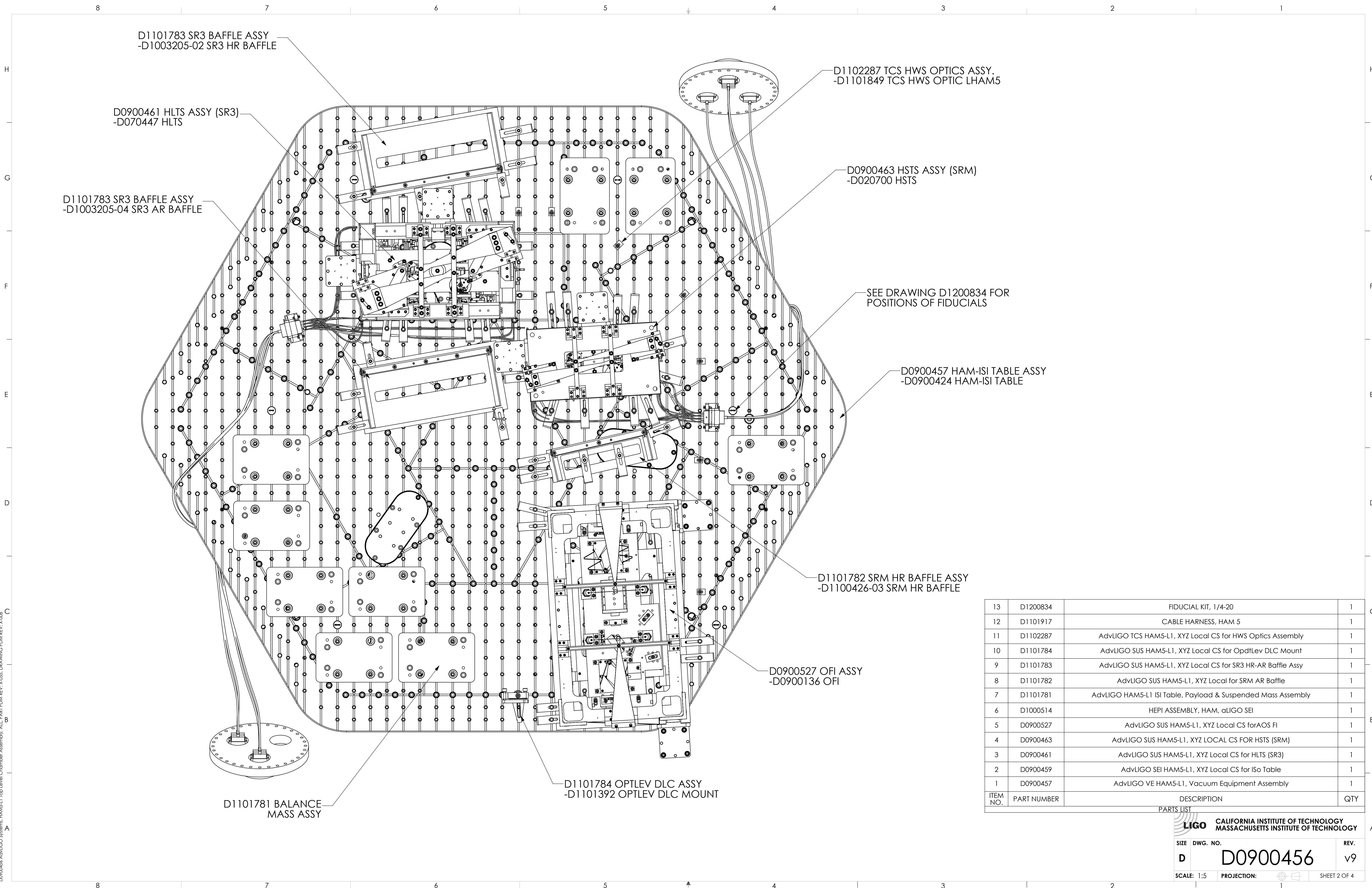
NOTES AND TOLERANCES: (UNLESS OTHERWISE SPECIFIED)

MATERIAL	--	FINISH	-- $\mu$ inch
----------	----	--------	---------------

CALIFORNIA INSTITUTE OF TECHNOLOGY MASSACHUSETTS INSTITUTE OF TECHNOLOGY		PART NAME <b>HAM5-L1 TOP LEVEL CHAMBER ASSEMBLY, FULLY FINISHED</b>	
SYSTEM	ADVANCED LIGO	SUB-SYSTEM	SUS
DESIGNER	ED CHAVEZ	27 JUL 2009	SIZE DWG. NO.
DRAFTER	C. TORRIE	15 NOV 2011	<b>D</b>
CHECKER	SEE DCC	SEE DCC	<b>D0900456</b>
APPROVAL	SEE DCC	SEE DCC	SCALE: 1:16 PROJECTION:

REV.	v9	SHEET 1 OF 4
------	----	--------------

D:\D0900456\_A04\LIGO Systems\HAM5-L1 Top Level Chamber Assembly\ALL PART PDM REV. X-055 DRAWING PDM REV. X-008



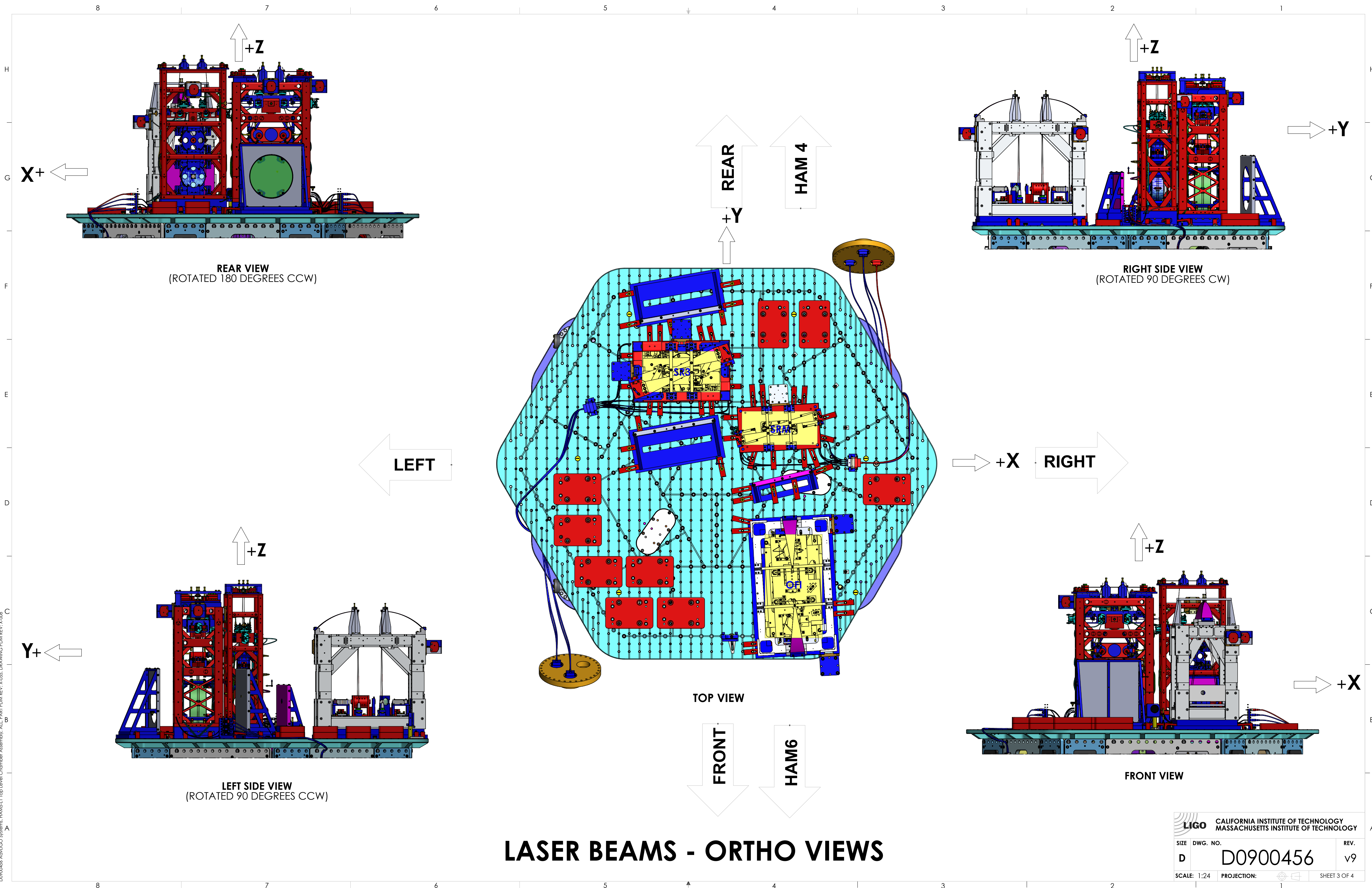
ITEM NO.	PART NUMBER	DESCRIPTION	QTY
13	D1200834	FIDUCIAL KIT, 1/4-20	1
12	D1101917	CABLE HARNESS, HAM 5	1
11	D1102287	AdvLIGO TCS HAM5-L1, XYZ Local CS for HWS Optics Assembly	1
10	D1101784	AdvLIGO SUS HAM5-L1, XYZ Local CS for OptLev DLC Mount	1
9	D1101783	AdvLIGO SUS HAM5-L1, XYZ Local CS for SR3 HR-AR Baffle Assy	1
8	D1101782	AdvLIGO SUS HAM5-L1, XYZ Local for SRM AR Baffle	1
7	D1101781	AdvLIGO HAM5-L1 ISI Table, Payload & Suspended Mass Assembly	1
6	D1000514	HEPI ASSEMBLY, HAM, aLIGO SEI	1
5	D0900527	AdvLIGO SUS HAM5-L1, XYZ Local CS for AOS FI	1
4	D0900463	AdvLIGO SUS HAM5-L1, XYZ LOCAL CS FOR HSTS (SRM)	1
3	D0900461	AdvLIGO SUS HAM5-L1, XYZ Local CS for HLTS (SR3)	1
2	D0900459	AdvLIGO SEI HAM5-L1, XYZ Local CS for ISo Table	1
1	D0900457	AdvLIGO VE HAM5-L1, Vacuum Equipment Assembly	1

**LIGO** CALIFORNIA INSTITUTE OF TECHNOLOGY  
 MASSACHUSETTS INSTITUTE OF TECHNOLOGY

SIZE DWG. NO. REV.  
**D** **D0900456** v9

SCALE: 1:5 PROJECTION: SHEET 2 OF 4

D0900457 AdvLIGO Systems: HAM5-L1 Top Level Chamber Assembly: ALL PART PDM REV: X-055: DRAWING PDM REV: X-008

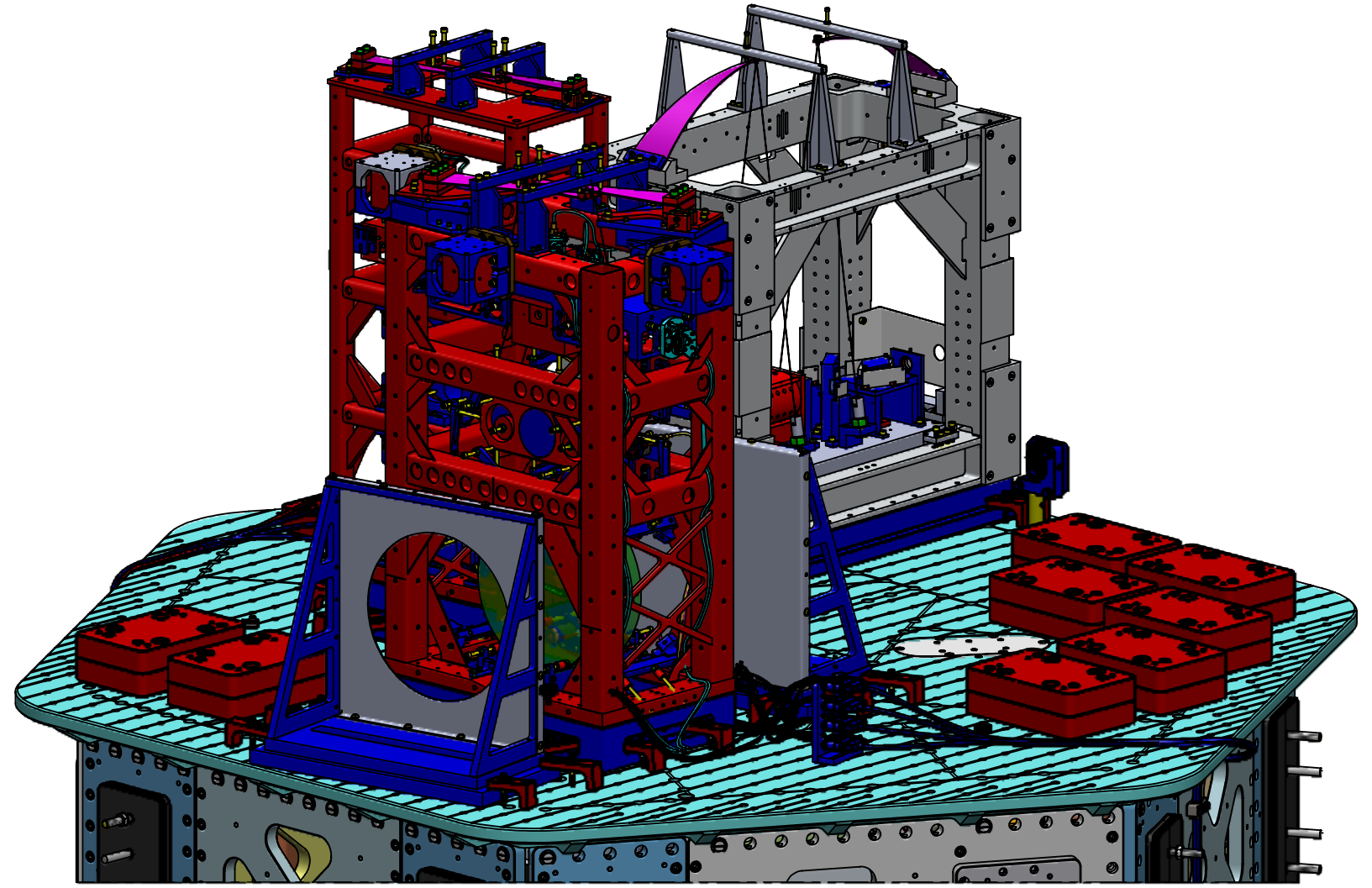


# LASER BEAMS - ORTHO VIEWS

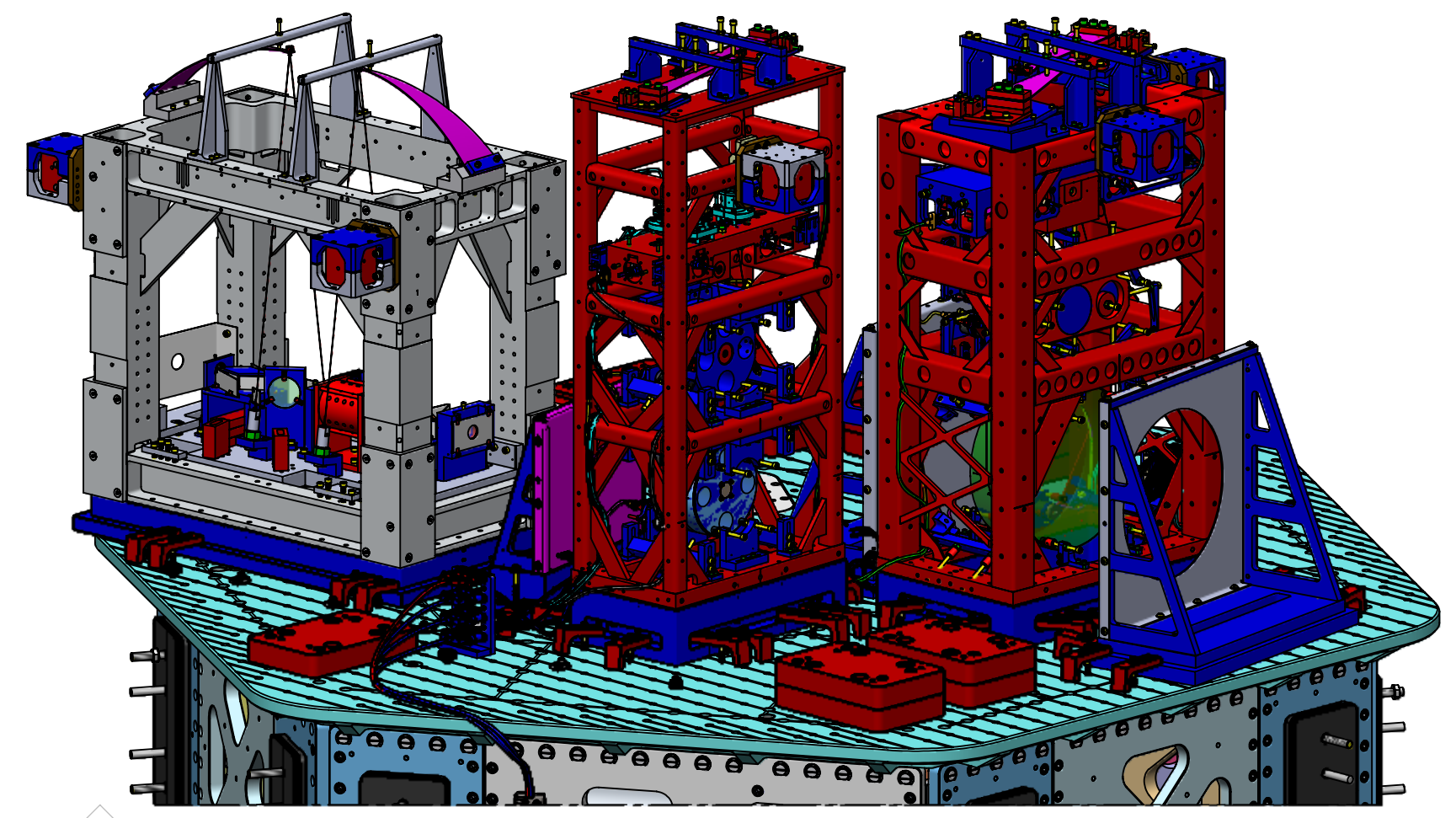
**LIGO** CALIFORNIA INSTITUTE OF TECHNOLOGY  
 MASSACHUSETTS INSTITUTE OF TECHNOLOGY

SIZE	DWG. NO.	REV.
D	D0900456	v9
SCALE: 1:24	PROJECTION:	SHEET 3 OF 4

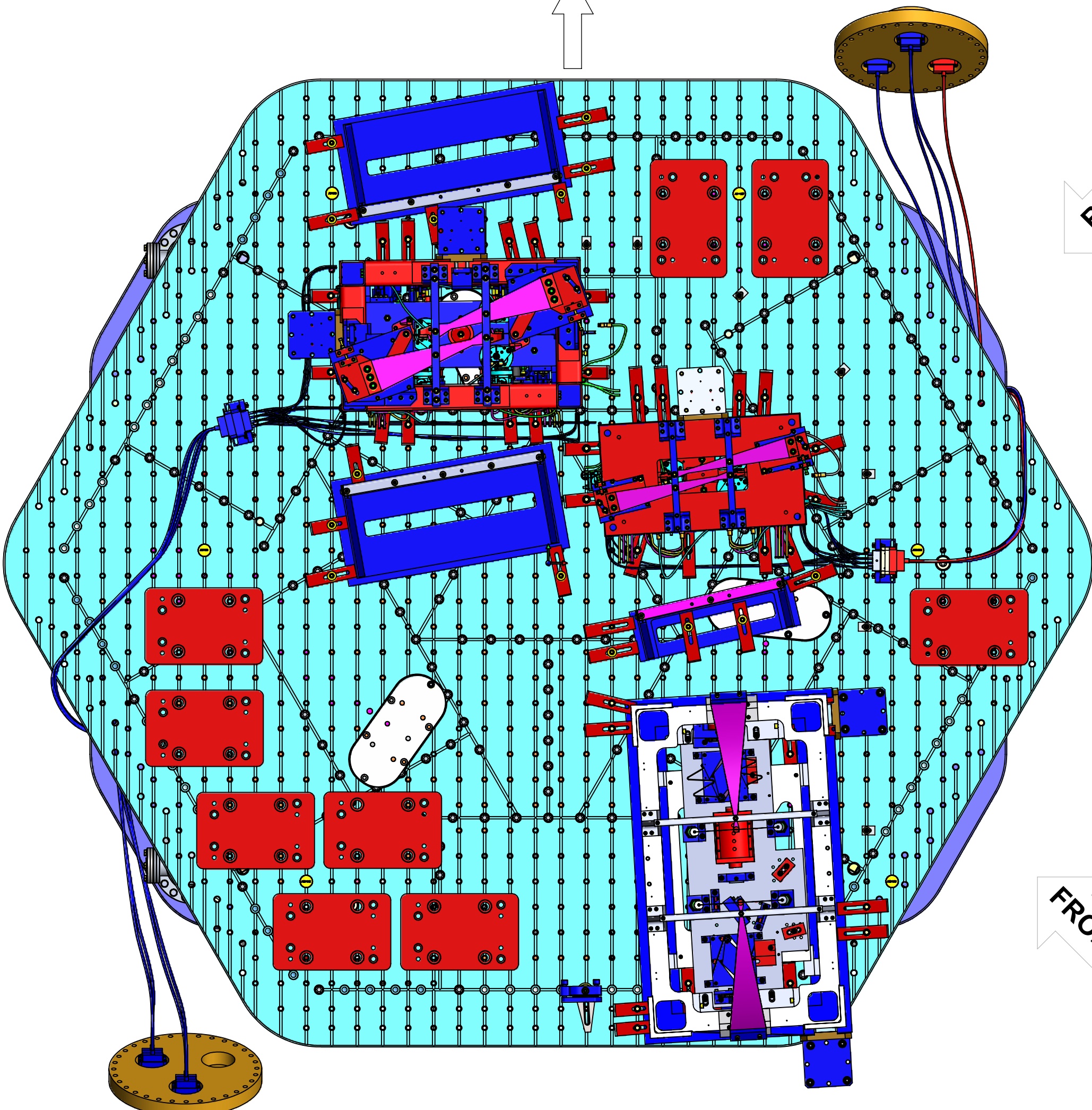
DDP00456-Asst LIGO Systems: HAM5-L1 Top Level Chamber Assembly: ALL PART PDM REV: X-055, DRAWING PDM REV: X-008



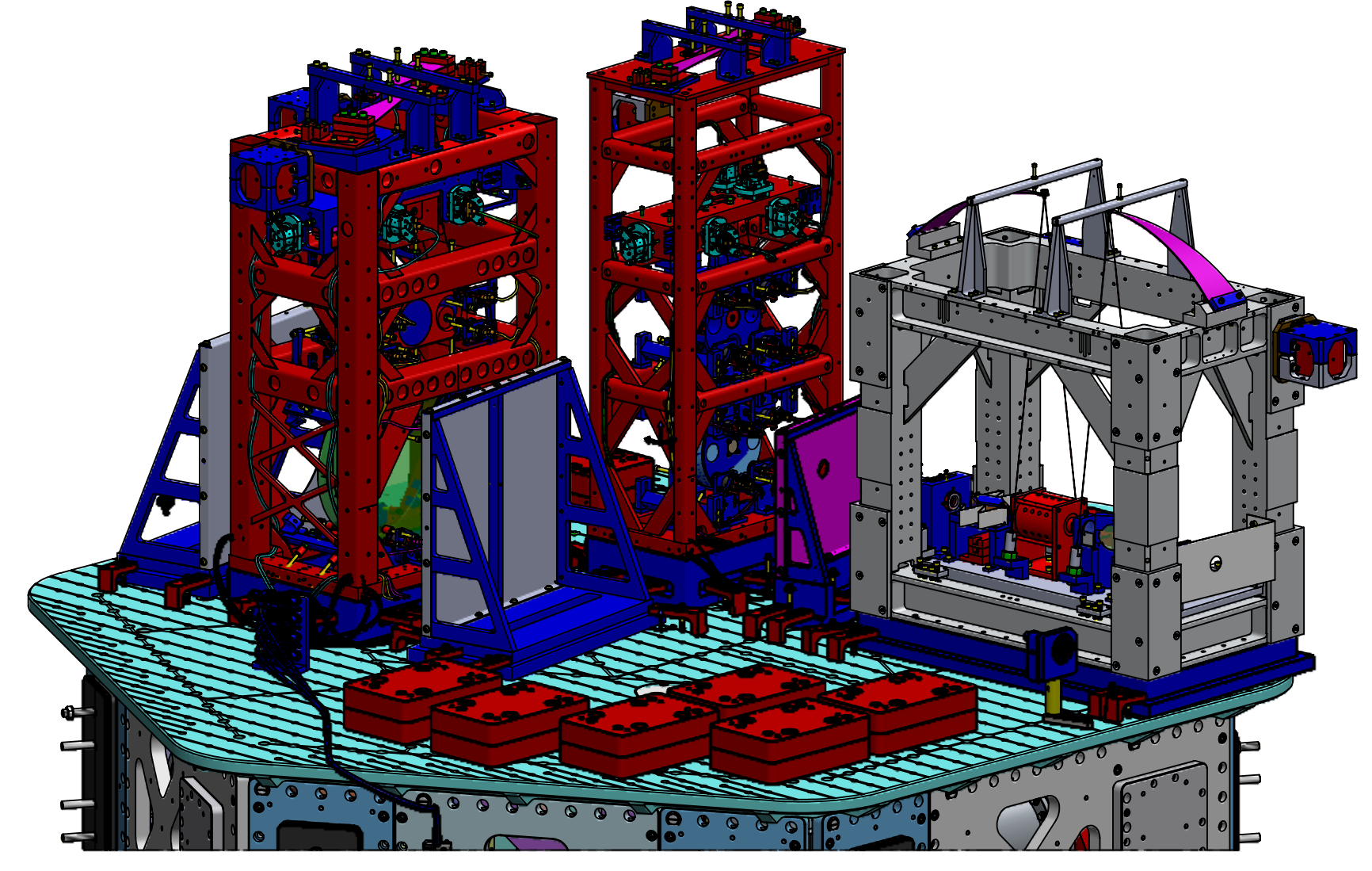
ISO REAR - LEFT



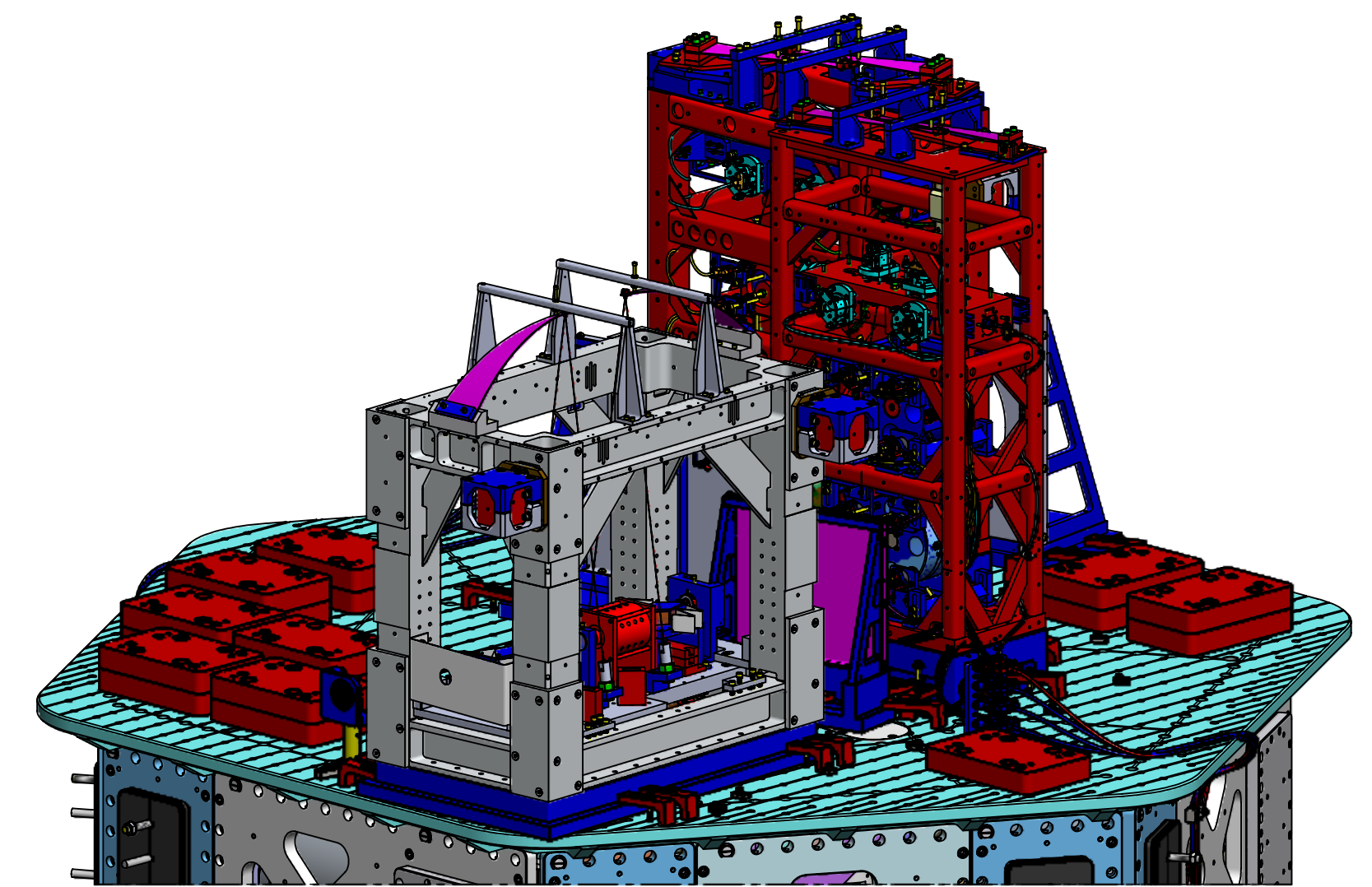
ISO REAR - RIGHT



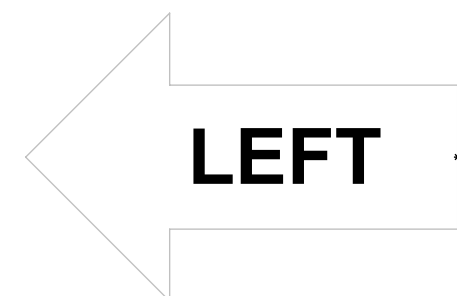
TOP VIEW



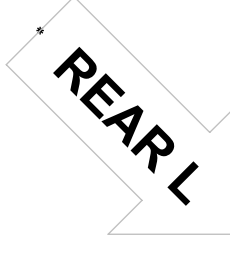
ISO FRONT - LEFT



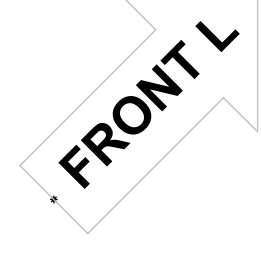
ISO FRONT - RIGHT



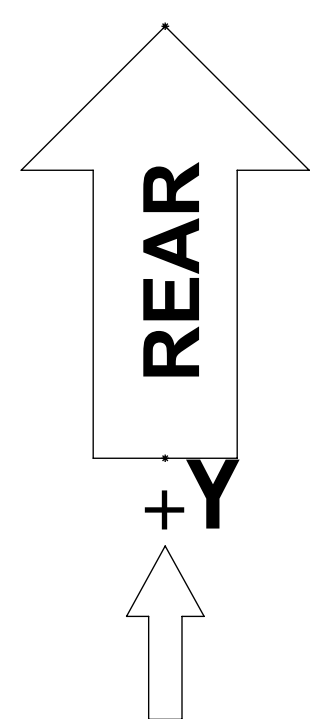
LEFT



REAR L

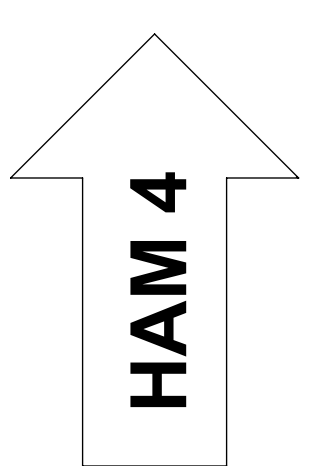


FRONT L



REAR

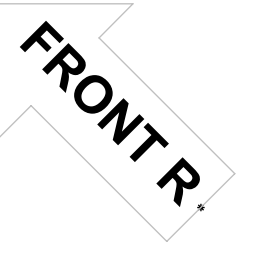
+Y



HAM 4



REAR R

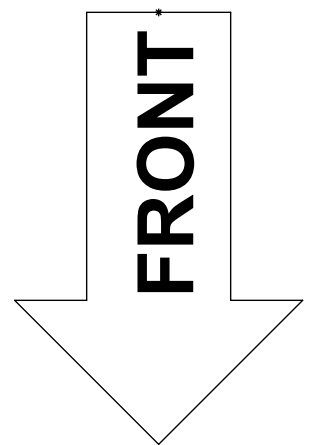


FRONT R

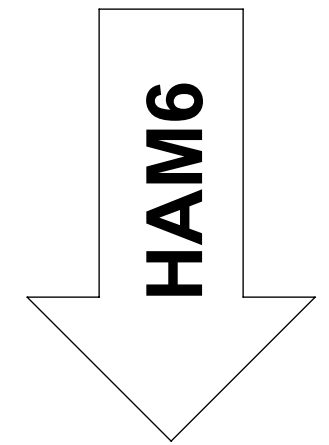


RIGHT

+X



FRONT



HAM 6

# LASER BEAMS - ISO VIEWS

		CALIFORNIA INSTITUTE OF TECHNOLOGY MASSACHUSETTS INSTITUTE OF TECHNOLOGY	
SIZE	DWG. NO.	REV.	
D	D0900456	v9	
SCALE: 1:24	PROJECTION:	SHEET 4 OF 4	