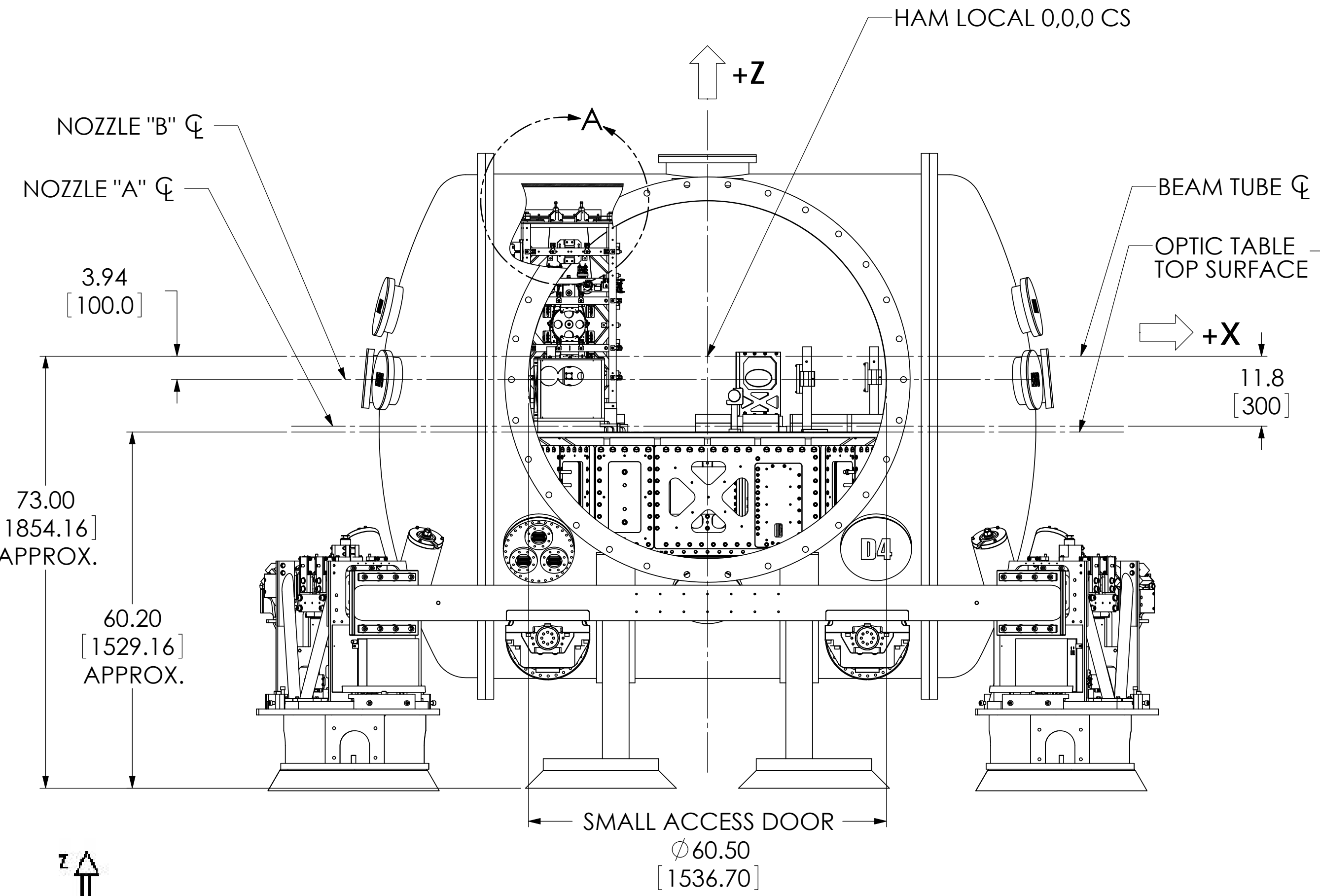
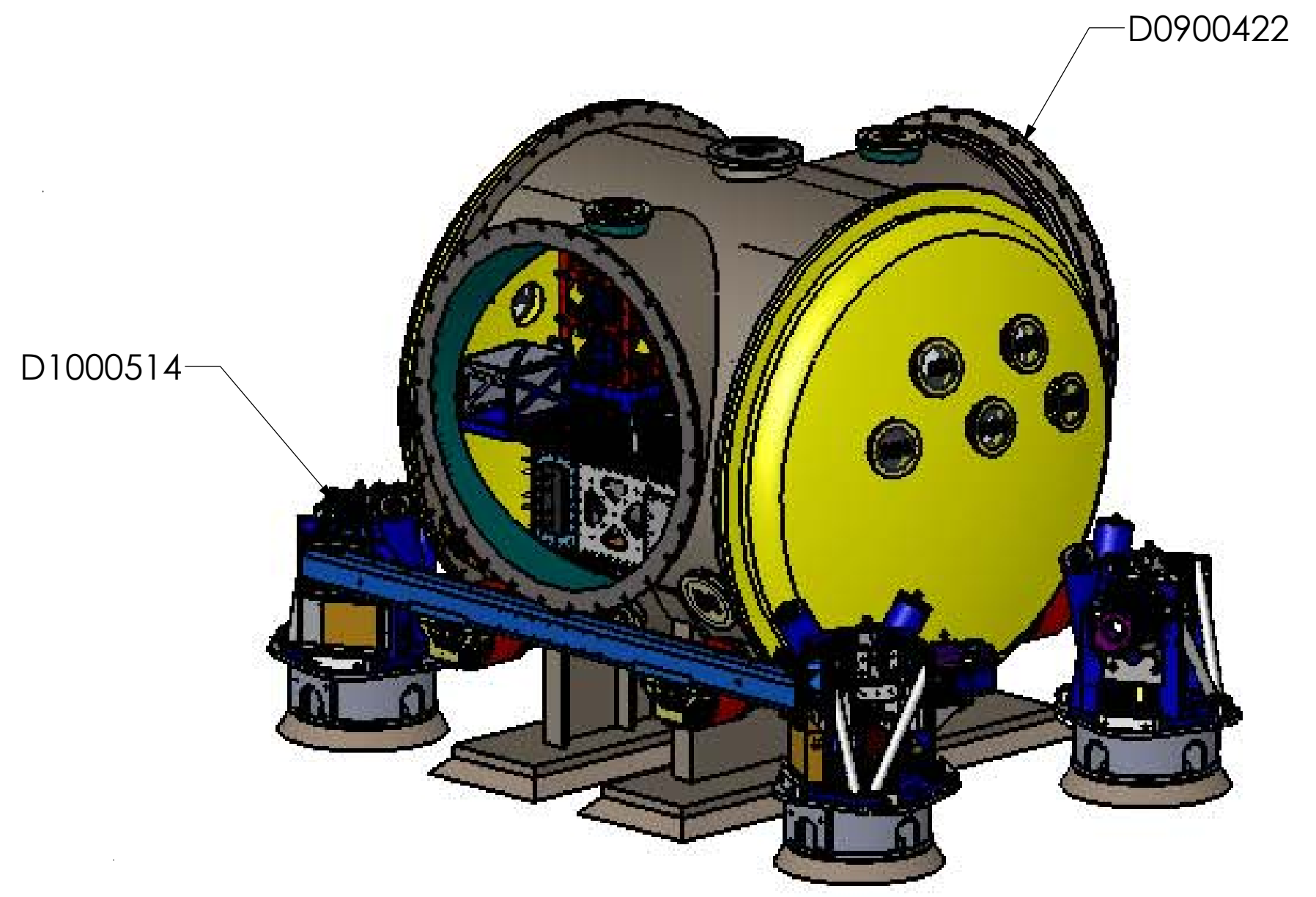
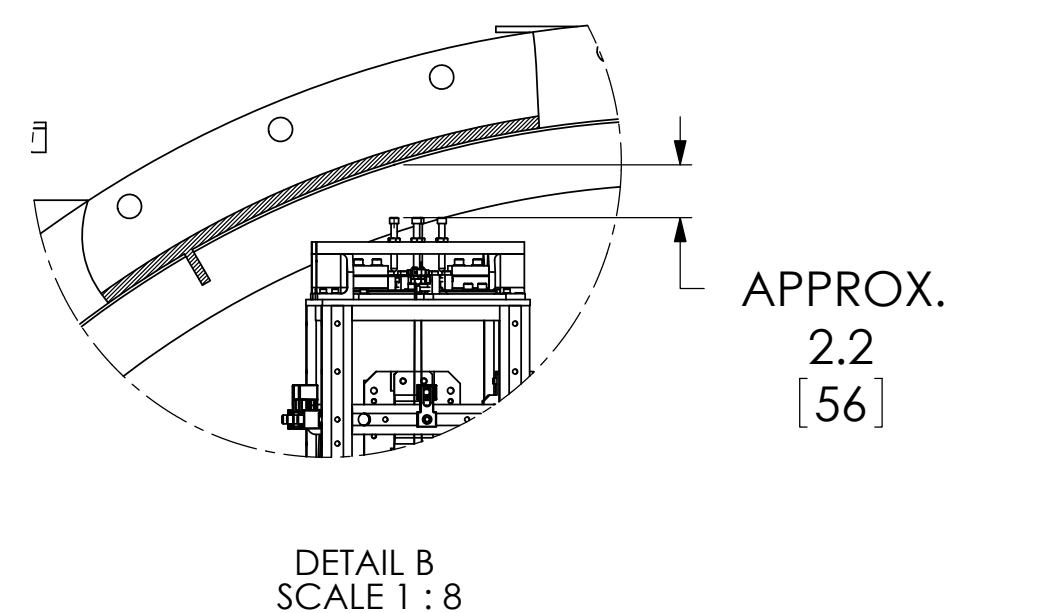
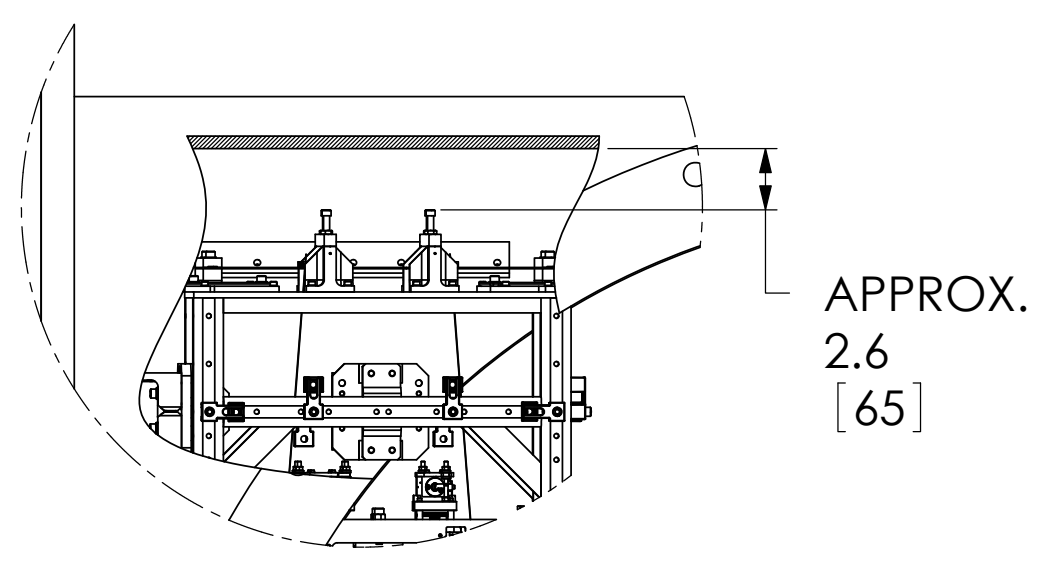
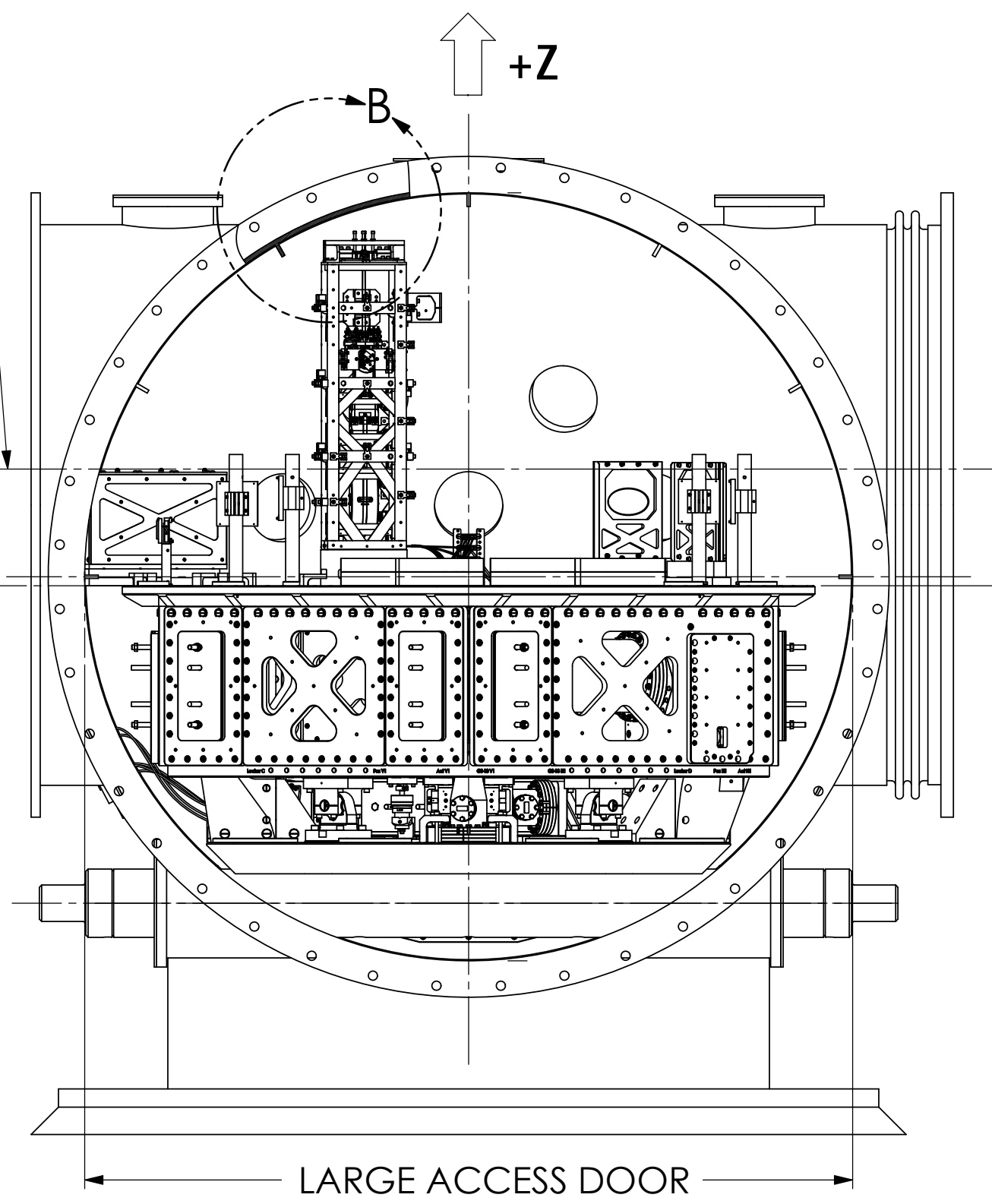


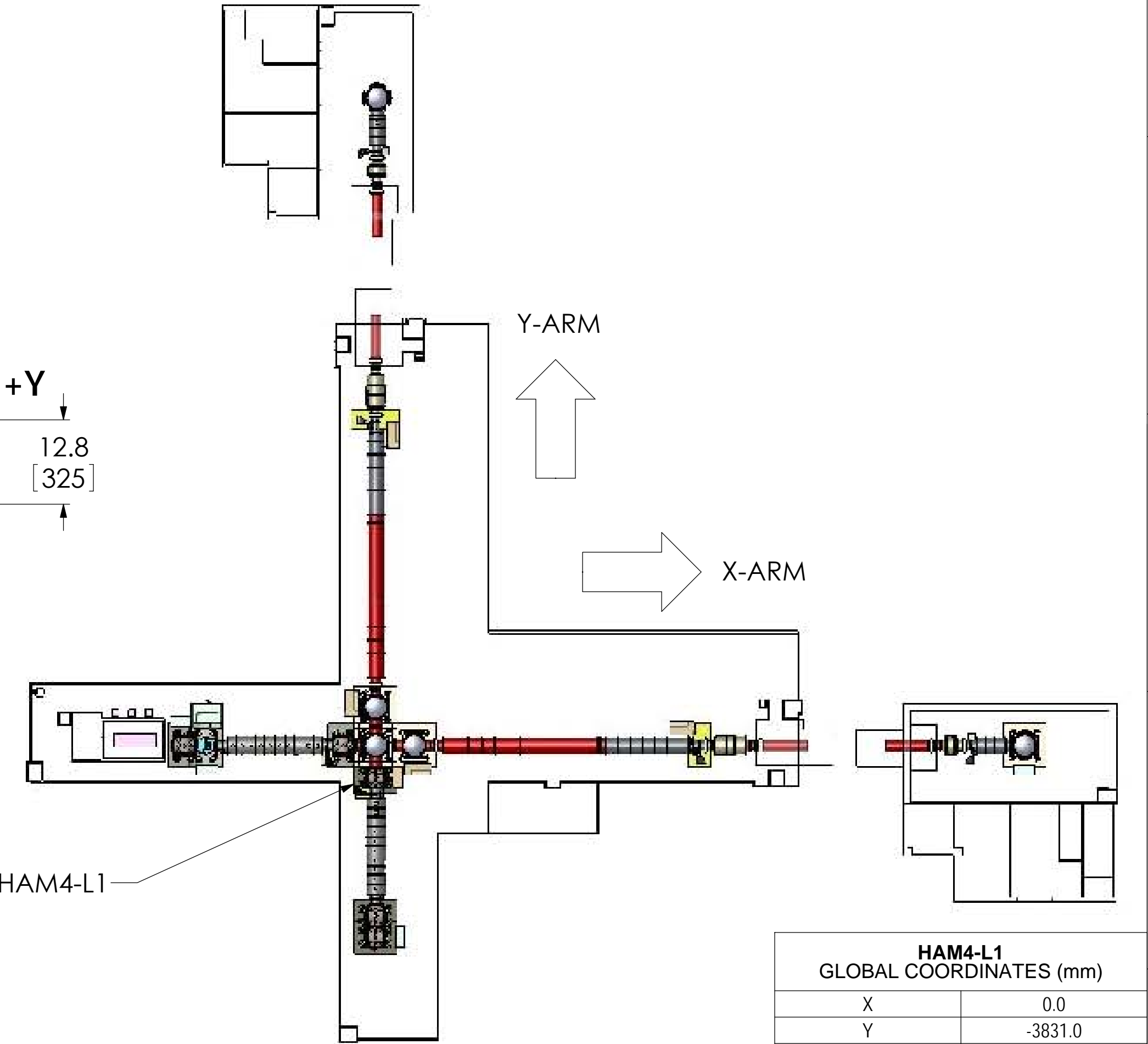
TOP VIEW



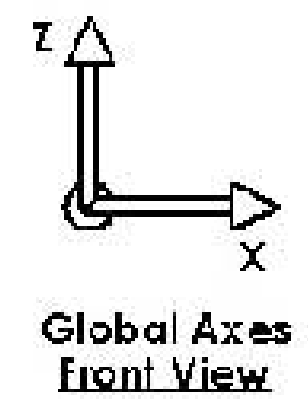
FRONT VIEW



RIGHT VIEW



HAM4-L1 GLOBAL COORDINATES (mm)	
X	0.0
Y	-3831.0
Z	0.0



NOTES AND TOLERANCES: (UNLESS OTHERWISE SPECIFIED)	
1. INTERPRET DRAWING PER ASME Y14.5-1994.	
2. REMOVE ALL SHARP EDGES, .005-.015, FOR MACHINED PARTS. ROUND ALL EDGES APPROXIMATELY R.02 FOR SHEET METAL PARTS.	
3. DO NOT SCALE FROM DRAWING.	
4. ALL MACHINING FLUIDS MUST BE FULLY SYNTHETIC, FULLY WATER SOLUBLE AND FREE OF SULFUR, SILICONE, AND CHLORINE.	
MATERIAL	FINISH
--	-- μinch

LIGO CALIFORNIA INSTITUTE OF TECHNOLOGY MASSACHUSETTS INSTITUTE OF TECHNOLOGY	
SYSTEM	SUB-SYSTEM
ADVANCED LIGO	SUS
NEXT ASSY	

PART NAME		HAM4-L1 TOP LEVEL CHAMBER ASSEMBLY, FULLY DEFINED	
DESIGNER	27 JUL 2009	SIZE	DWG. NO.
DRAFTER	ED CHAVEZ	27 JUL 2009	D
CHECKER	C. TORRIE	15 NOV 2011	
APPROVAL	SEE DCC	SCALE: 1:16	PROJECTION:
		SHEET 1 OF 5	

D0900421.ASI:G0 SYSTEMS:HAM4-L1 TOP LEVEL CHAMBER ASSEMBLY: ALL PART PDM REV.X-BS2: DRAWING PDM REV.X-009

8

7

6

5

4

3

2

1

H

G

F

E

D

C

B

A

H

G

F

E

D

C

B

A

D1101475 BAFFLE ASSEMBLY
-D1101599 SR2 AR BAFFLE

D1101475 BAFFLE ASSEMBLY
-D1101599 HARTMANN SCRAPER BAFFLE

D1101974 HARTMANN BD BAFFLE ASSY
- D1102016 HARTMANN BD BAFFLE.

D1101476
BALANCE MASS ASSY

D1101814 CABLE
HARNESS ASSY


D0900423 HAM-ISI TABLE ASSY
-D0900124 HAM-ISI TABLE

D0900424 HSTS ASSY (SR2)
-D020700 HSTS

D1101863 HWS OPTICS ASSY
- D1101846 HWS OPTICS ASSY IN-VAC L-HAM4

D1101474 SR2 SB ASSY
-D1003349 SR2 SCRAPER BAFFLE

D1101473 OPTLEV DLC ASSY
-D1002074 OPT LEV DLC MOUNT

LIGO CALIFORNIA INSTITUTE OF TECHNOLOGY MASSACHUSETTS INSTITUTE OF TECHNOLOGY	
SIZE DWG. NO.	REV.
D D0900421	v5
SCALE: 1:5	PROJECTION:  SHEET 2 OF 5

8

7

6

5

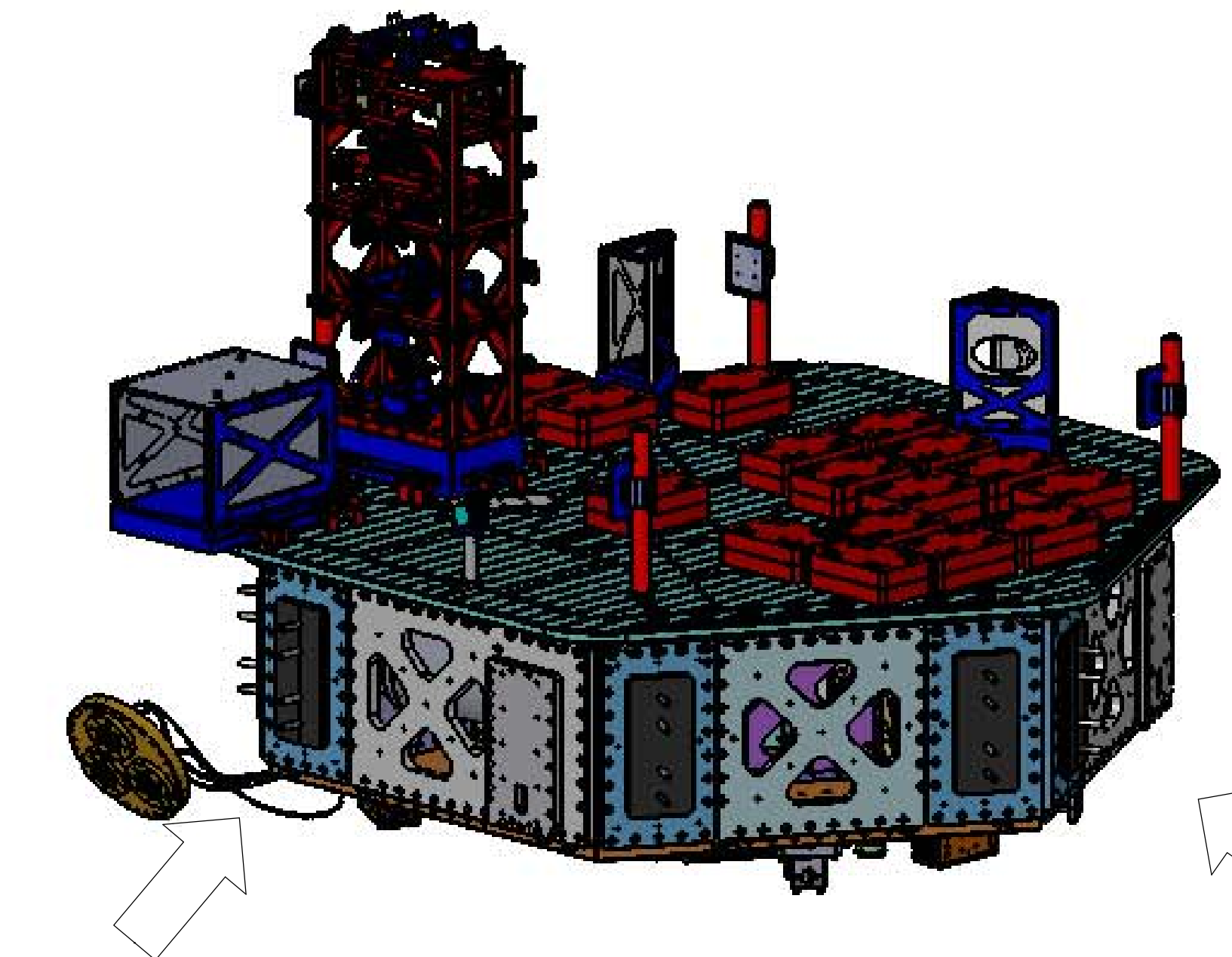
4

3

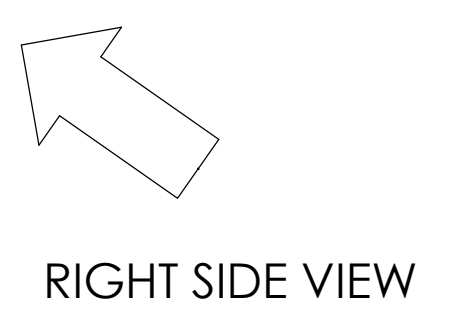
2

1

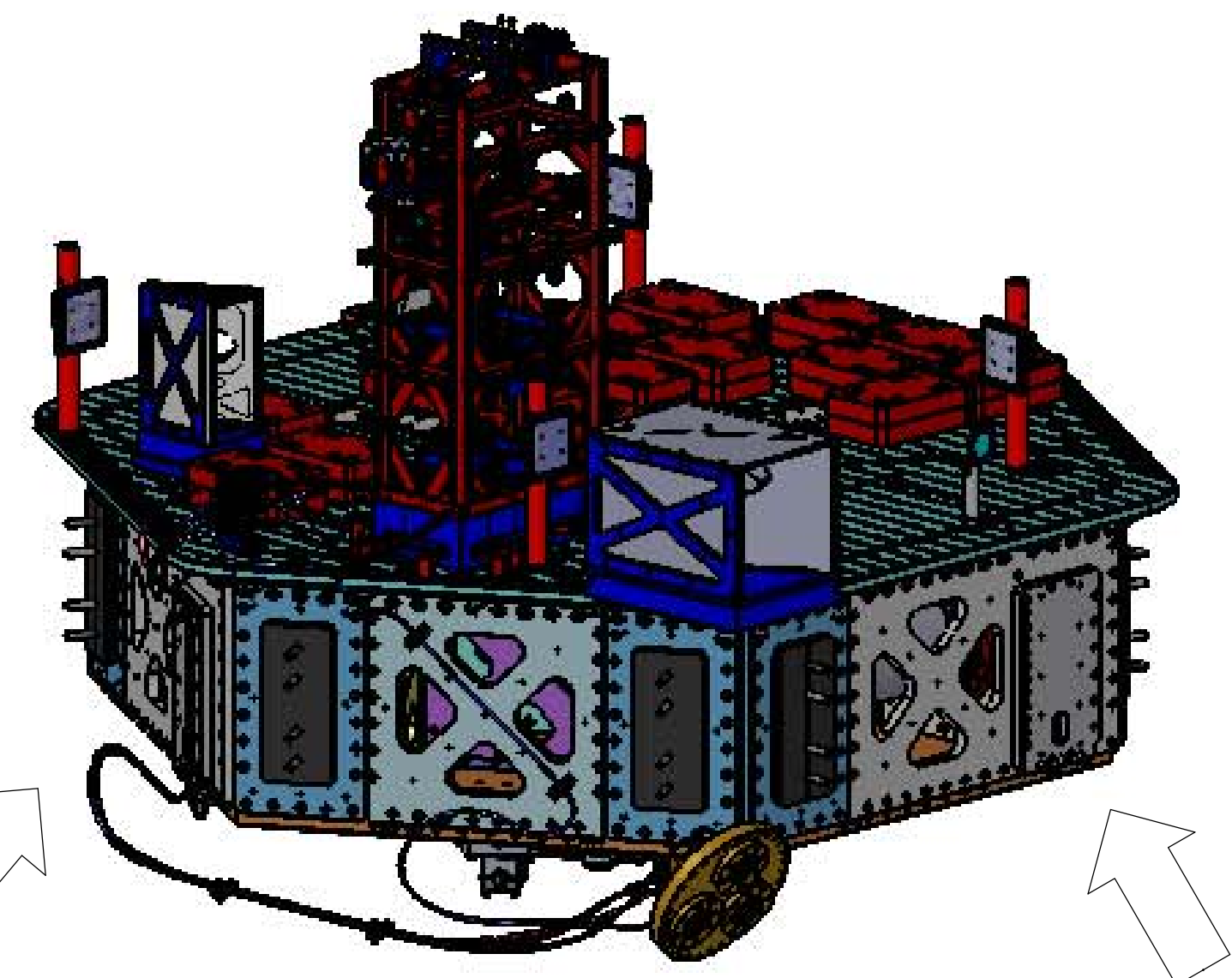
D0900421 ADU/LIGO SYSTEMS - HAM4 L1 TOP LEVEL CHAMBER ASSEMBLY - ALL PART PDM REV.X-052 DRAWING PDM REV.X-009



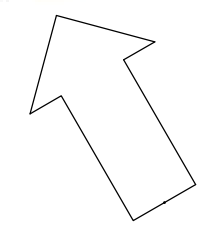
FRONT VIEW



RIGHT SIDE VIEW



LEFT SIDE VIEW



FRONT VIEW

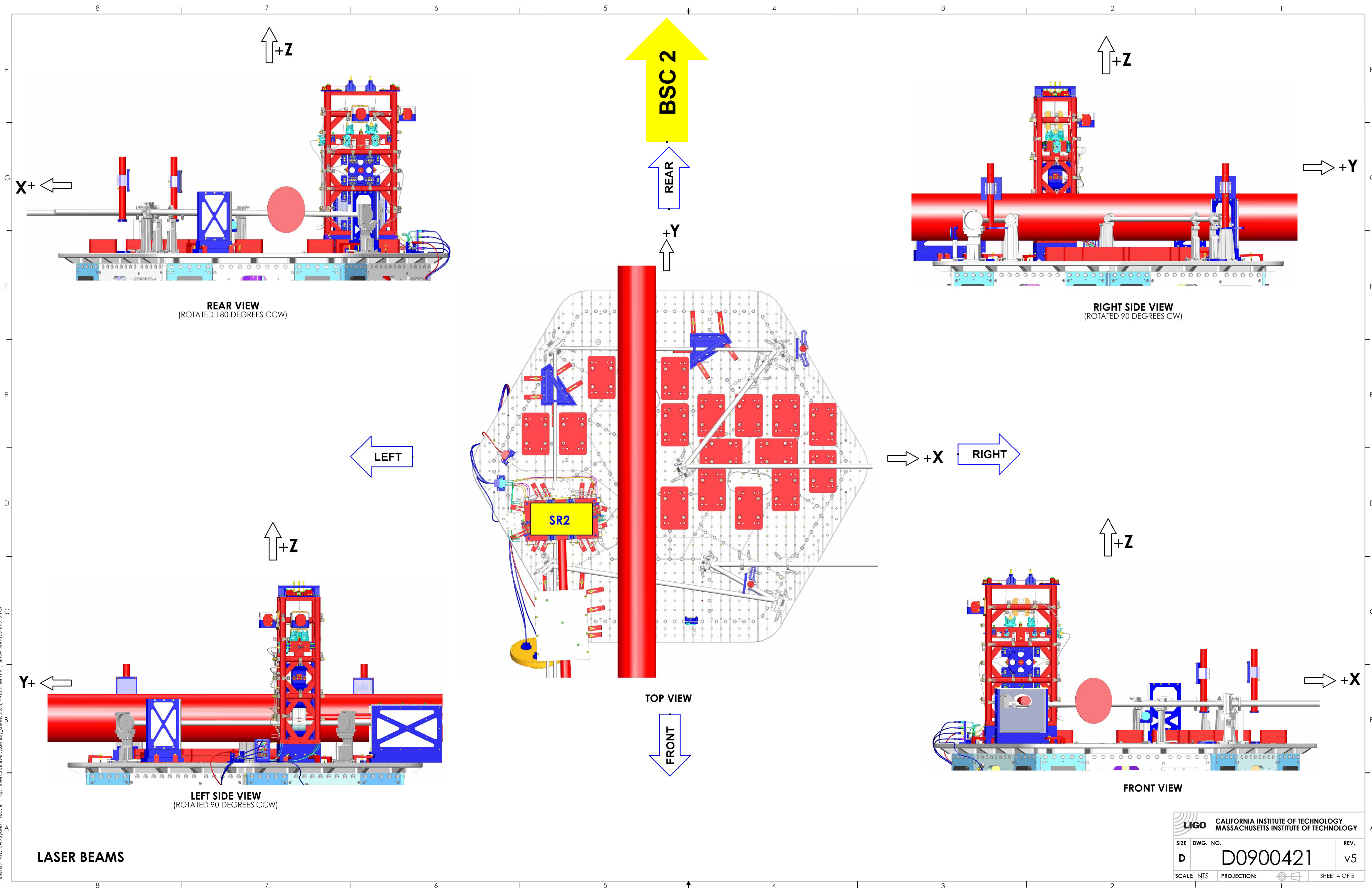


ITEM NO.	PART NUMBER	DESCRIPTION	MATERIAL	QTY.
11	D1101974	AdvLIGO AOS HAM4-L1, XYZ Local CS for Hartmann Cavity BD Baffle Assy	N/A	1
10	D1101814	CABLE HARNESS ROUTING	N/A	1
9	D1101863	AdvLIGO TCS HAM4-L1, XYZ Local CS for HWS Optics	N/A	1
8	D1101476	AdvLIGO HAM4-L1 ISI Table, Payload & Suspended Mass Assembly	N/A	1
7	D1101475	aLIGO SUS HAM4-L1, XYZ Local CS for SR2 AR Baffle	N/A	1
6	D1101474	aLIGO SUS HAM4-L1, XYZ Local CS for SR2 Scraper Baffle	N/A	1
5	D1101473	aLIGO SUS HAM4-L1, XYZ Local CS for OptLev DLC	N/A	1
4	D1000514	HEPI ASSEMBLY, HAM, aLIGO SEI	SEE BOMS	1
3	D0900424	AdvLIGO SUS HAM4-L1, XYZ Local CS for HSTS (SR2)	--	1
2	D0900423	AdvLIGO SEI HAM4-L1, XYZ Local CS for ISO Table	--	1
1	D0900422	AdvLIGO VE HAM4-L1, VACUUM EQUIPMENT ASSEMBLY	--	1

PARTS LIST

CALIFORNIA INSTITUTE OF TECHNOLOGY MASSACHUSETTS INSTITUTE OF TECHNOLOGY		
SIZE	DWG. NO.	REV.
D	D0900421	v5
SCALE: 1:12	PROJECTION:	SHEET 3 OF 5

D0900421 ADVLIGO SYSTEMS, HAM4-L1 TOP LEVEL CHAMBER ASSEMBLY, ALL PART PDM REV. X-352, DRAWING PDM REV. X-009



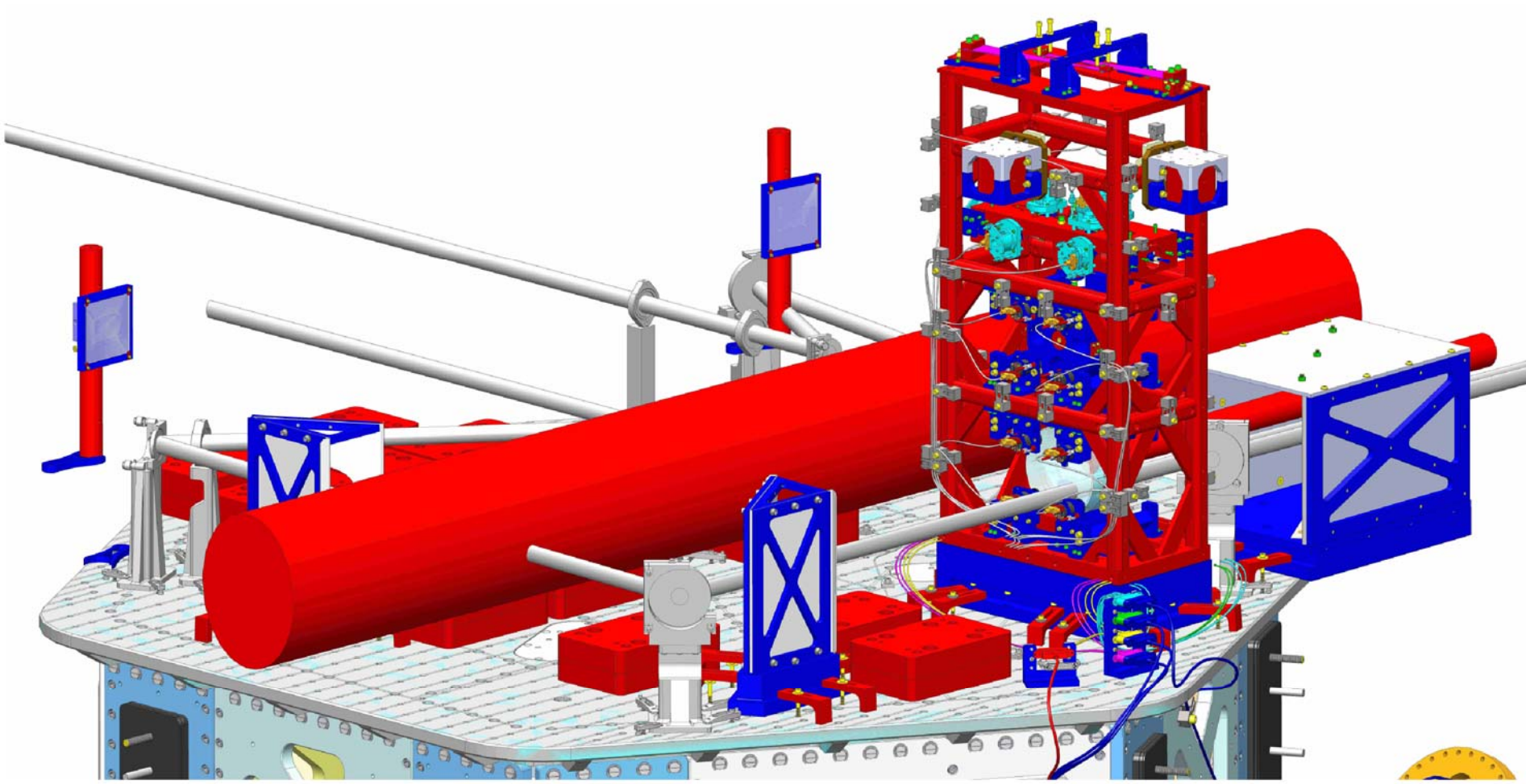
D0900421_AduLIGO Systems_HAMM-L1 Top Level Chamber Assembly Sheets 4 & 5_PART FDM REV: 1 DRAWING FDM REV: 1.09

LASER BEAMS

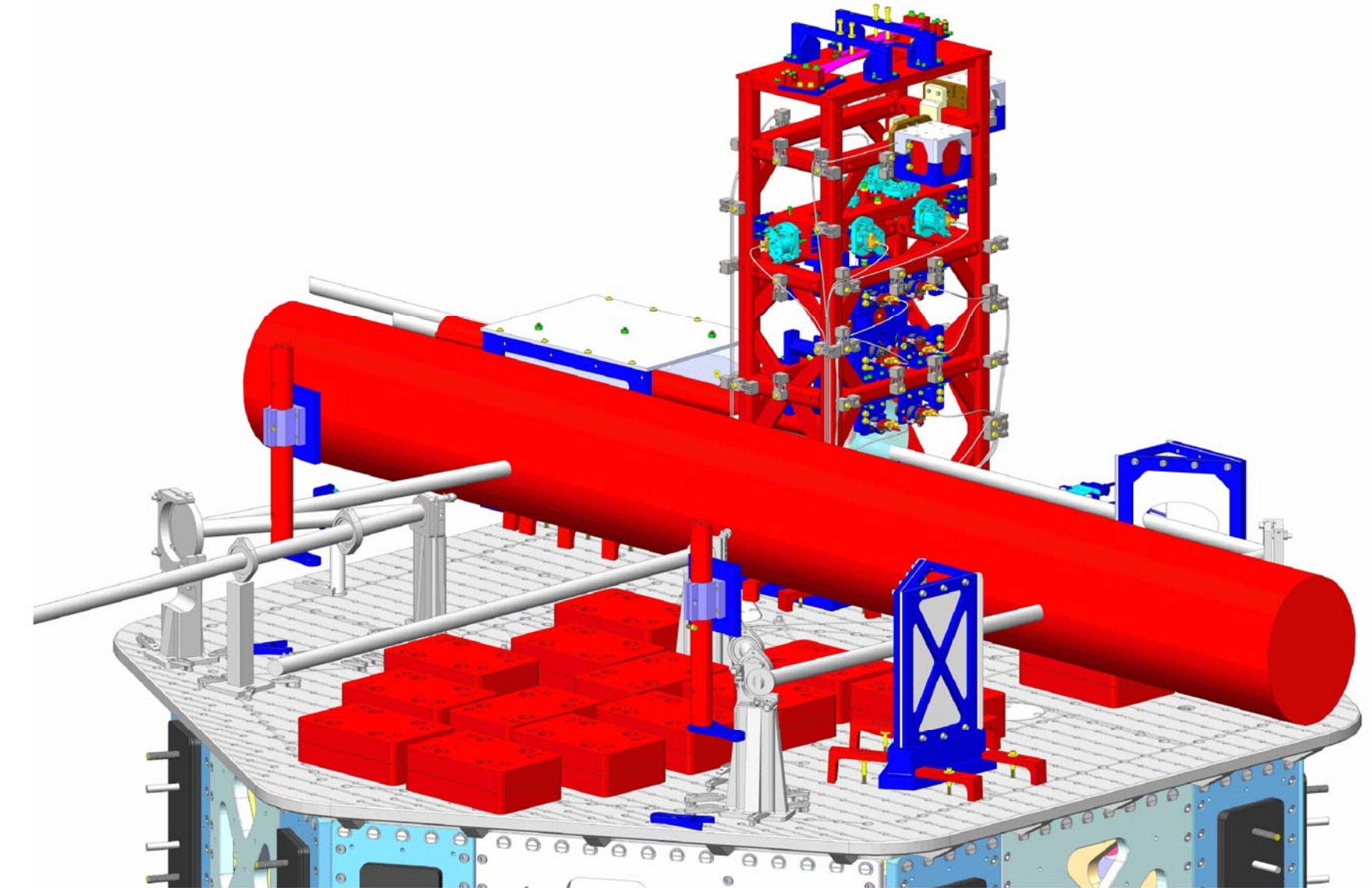
LIGO CALIFORNIA INSTITUTE OF TECHNOLOGY MASSACHUSETTS INSTITUTE OF TECHNOLOGY	
SIZE DWG. NO.	REV.
D D0900421	v5
SCALE: NTS	PROJECTION:
SHEET 4 OF 5	

8 7 6 5 4 3 2 1

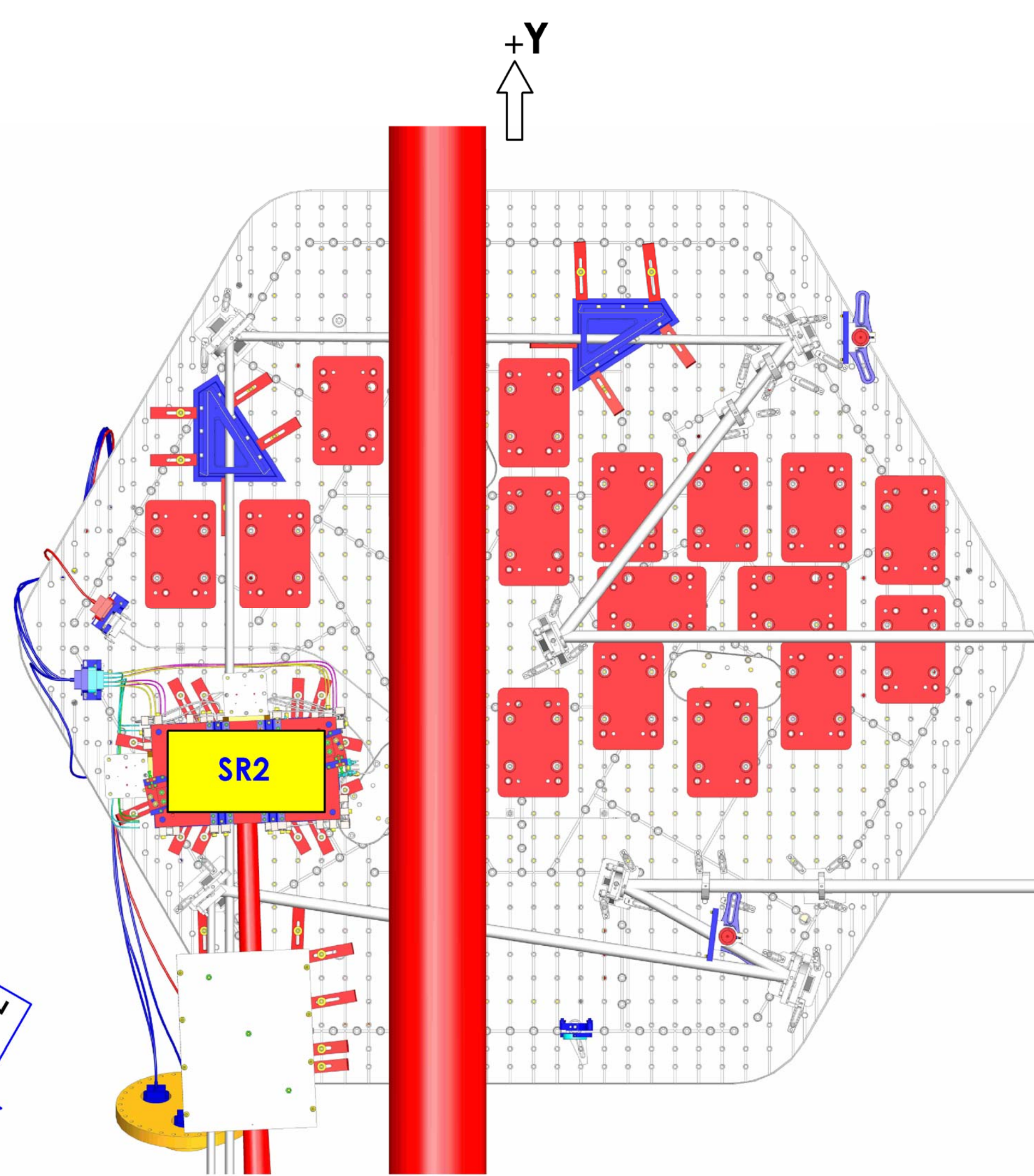
H G F E D C B A



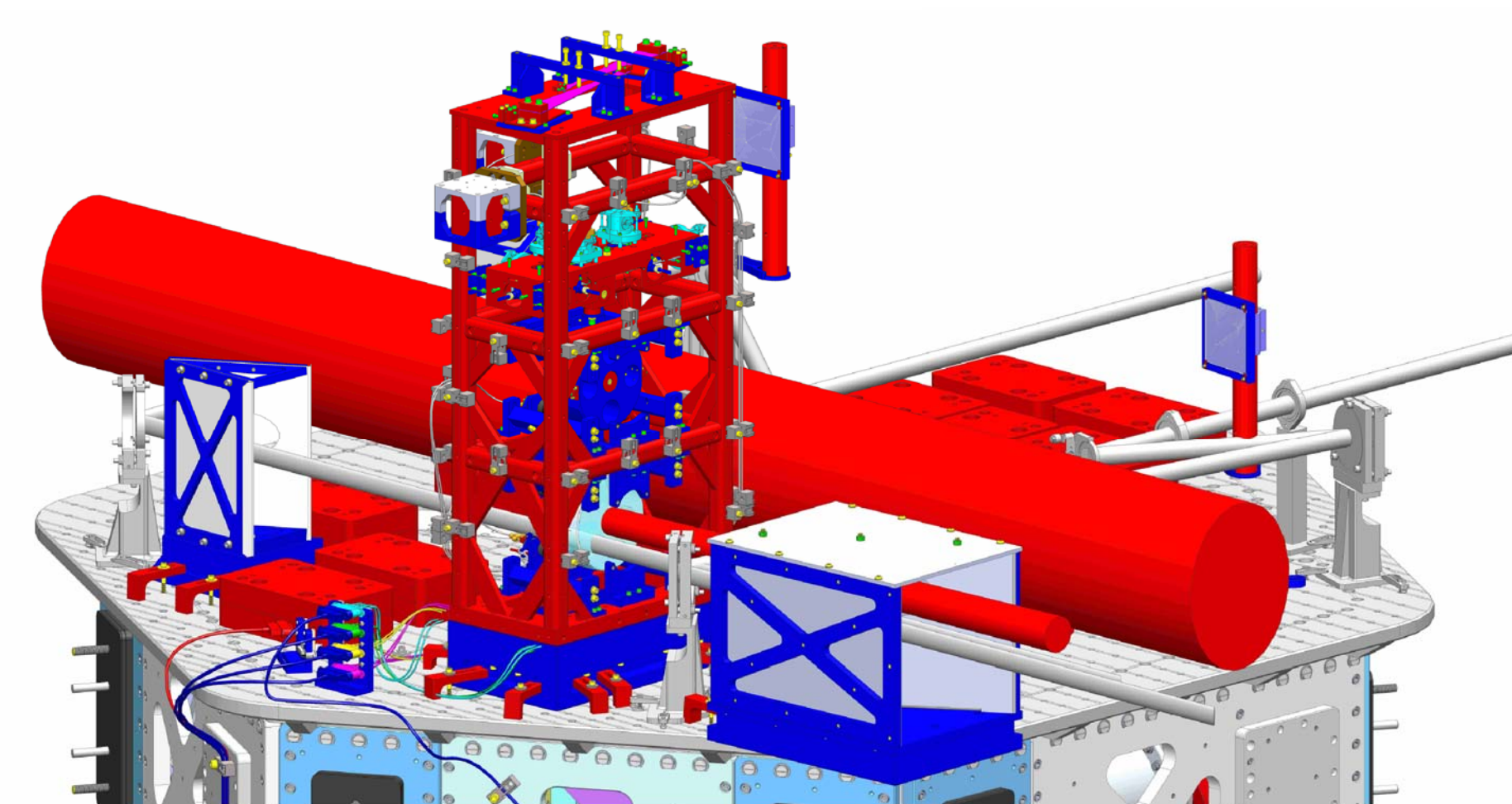
ISO REAR - LEFT



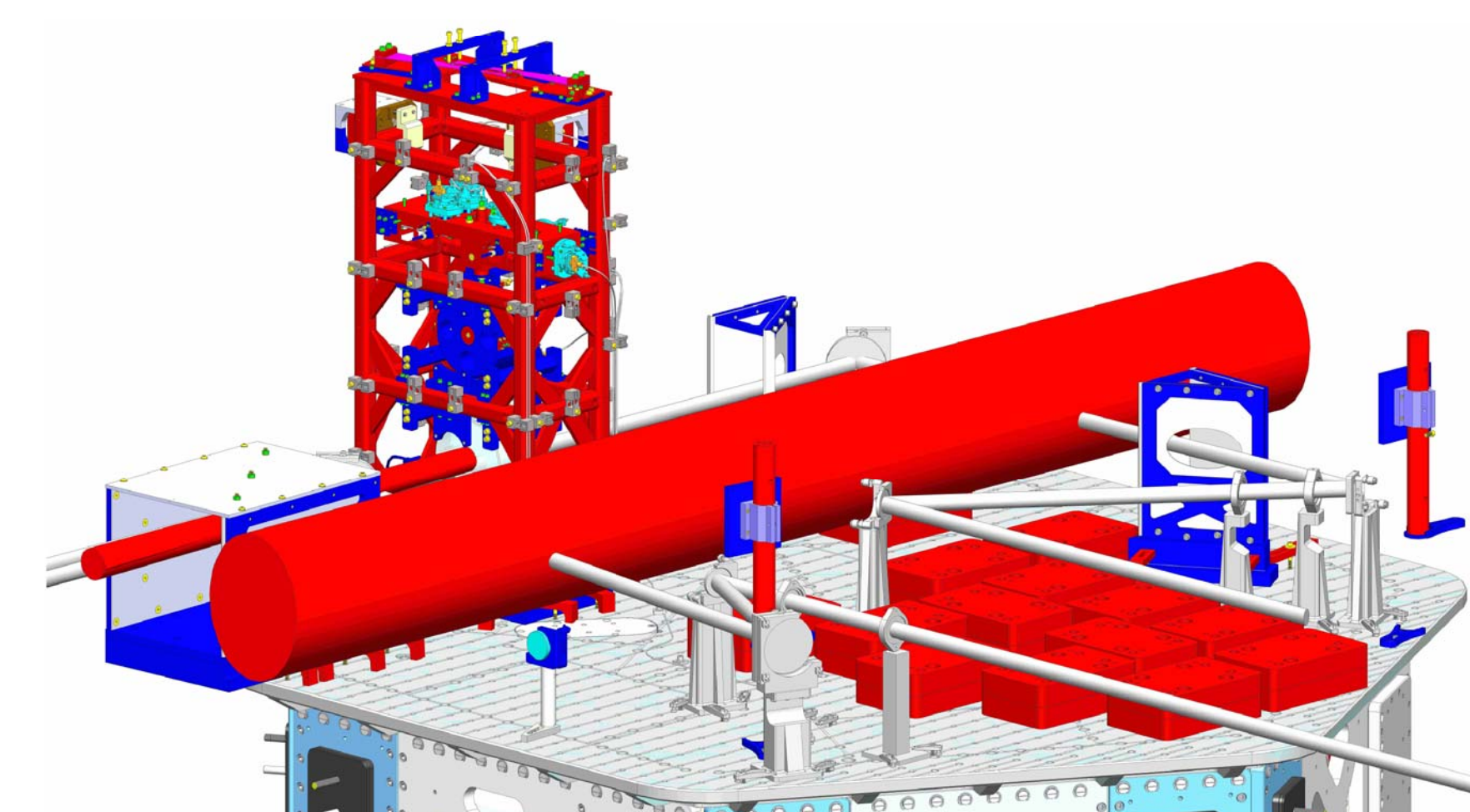
ISO REAR - RIGHT



+X



ISO FRONT - LEFT



ISO FRONT - RIGHT



LASER BEAMS

8 7 6 5 4 3 2 1

LIGO CALIFORNIA INSTITUTE OF TECHNOLOGY MASSACHUSETTS INSTITUTE OF TECHNOLOGY		
SIZE	DWG. NO.	REV.
D	D0900421	v5
SCALE: NTS	PROJECTION:	SHEET 5 OF 5

D0900421_AduLIGO Systems_HAMM-L1 Top Level Chamber Assembly Sheets 4 & 5 PART FDM REV: 1 DRAWING FDM REV: 1.009